

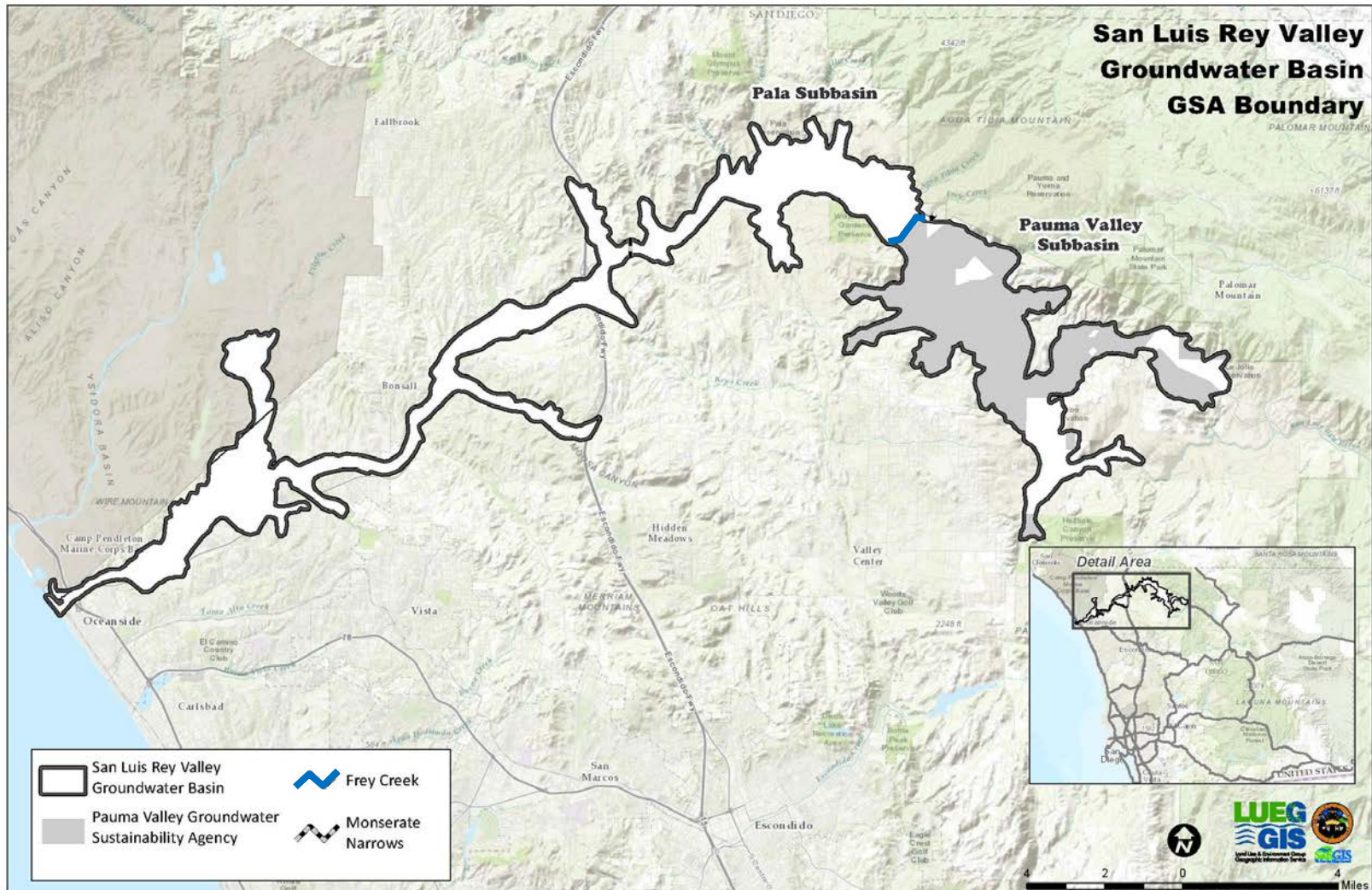


ITEM 2: MOU TO PREPARE A
GROUNDWATER SUSTAINABILITY PLAN,
SAN LUIS REY VALLEY BASIN:
DEPARTMENT OF PLANNING &
DEVELOPMENT SERVICES

San Luis Rey Valley Groundwater Basin



2



Memorandum of Understanding



3

AGENCIES:

- ☐ County of San Diego
- ☐ Pauma Valley Community Services District
- ☐ Upper San Luis Rey Resource Conservation District
- ☐ Yuima Municipal Water District

Memorandum of Understanding



4

PURPOSE

- Memorializes roles and responsibilities of County and each of the agencies
- Eliminates overlap as required by the Sustainable Groundwater Management Act (SGMA)
- Establishes the Pauma Valley GSA

Memorandum of Understanding



5

FRAMEWORK

- Stakeholder Engagement Plan
- County is contracting agency for consulting services
- County will take the lead to develop the Plan
- Partner agencies to provide input on Plan
- County to adopt Plan
- Consideration for future alternative governance

Groundwater Sustainability Plan Components



6

- Physical Description of Basin
- Measurable Objectives and Interim Milestones
- Water Budget/Model
- Planning and Implementation Horizon
- Monitoring and Ongoing Management



Board Action

7

- ❑ Adopt MOU for develop of a Groundwater Sustainability Plan
- ❑ Designate PDS to administer MOU
- ❑ Find the proposed action is exempt from CEQA pursuant to Section 15061(b)(1) and Water Code Section 10728.6



ITEM 2: MOU TO PREPARE A
GROUNDWATER SUSTAINABILITY PLAN,
SAN LUIS REY VALLEY BASIN:
DEPARTMENT OF PLANNING &
DEVELOPMENT SERVICES