

**Attachment A – A RESOLUTION OF THE SAN  
DIEGO COUNTY BOARD OF SUPERVISORS  
ADOPTING THE 2019 GENERAL PLAN CLEAN-UP  
GENERAL PLAN AMENDMENT; GPA 18-006**

A RESOLUTION OF THE SAN DIEGO COUNTY BOARD OF SUPERVISORS ADOPTING THE 2019 GENERAL PLAN CLEAN-UP GENERAL PLAN AMENDMENT; GPA 18-006

WHEREAS, pursuant to Government Code Sections 65350 et seq., GPA 18-006 has been prepared, being the third amendment to the Land Use Element, the second amendment to the Mobility Element, and the first amendment to the Safety Element of the County General Plan, in the Calendar Year 2019; and

WHEREAS, GPA 18-006 has been filed by the County of San Diego consisting of an amendment to the Land Use Element, the Mobility Element, and the Safety Element of the County General Plan; and

WHEREAS, pursuant to Government Code Sections 65860 et seq., associated zoning reclassifications have been prepared together with GPA 18-006; and

WHEREAS, on October 11, 2019, the Planning Commission, pursuant to Government Code Sections 65351 and 65353 held a duly advertised public hearing on GPA 18-006; and

WHEREAS, the Planning Commission has made its detailed recommendations concerning the above item; and

WHEREAS, on December 11, 2019, the Board of Supervisors, pursuant to Government Code Section 65355 held a duly advertised public hearing on GPA 18-006; and

WHEREAS, on December 11, 2019, the Board of Supervisors has made findings pursuant to Attachment D, Environmental Findings, of the Board of Supervisors Planning Report for the project.

NOW THEREFORE BE IT RESOLVED that the Board of Supervisors takes the following actions:

1. Approve GPA 18-006, which consists of an amendment to the Land Use Element, including the Land Use Map and Regional Category Map, as shown in Exhibit A of the Resolution, an amendment to the Mobility Element as shown in Attachment C of the staff report, and an amendment to the Safety Element as shown in Attachment C of the staff report.

BE IT FURTHER RESOLVED that the amended documents shall be endorsed in the manner provided by the Board of Supervisors.

BE IT FURTHER RESOLVED that this Resolution shall take effect and be in force from and after 30 days after its adoption.

Approved as to Form and Legality  
County Counsel

By: \_\_\_\_\_  
Senior Deputy

## **Exhibit A – Land Use Map and Regional Category Map Amendments**

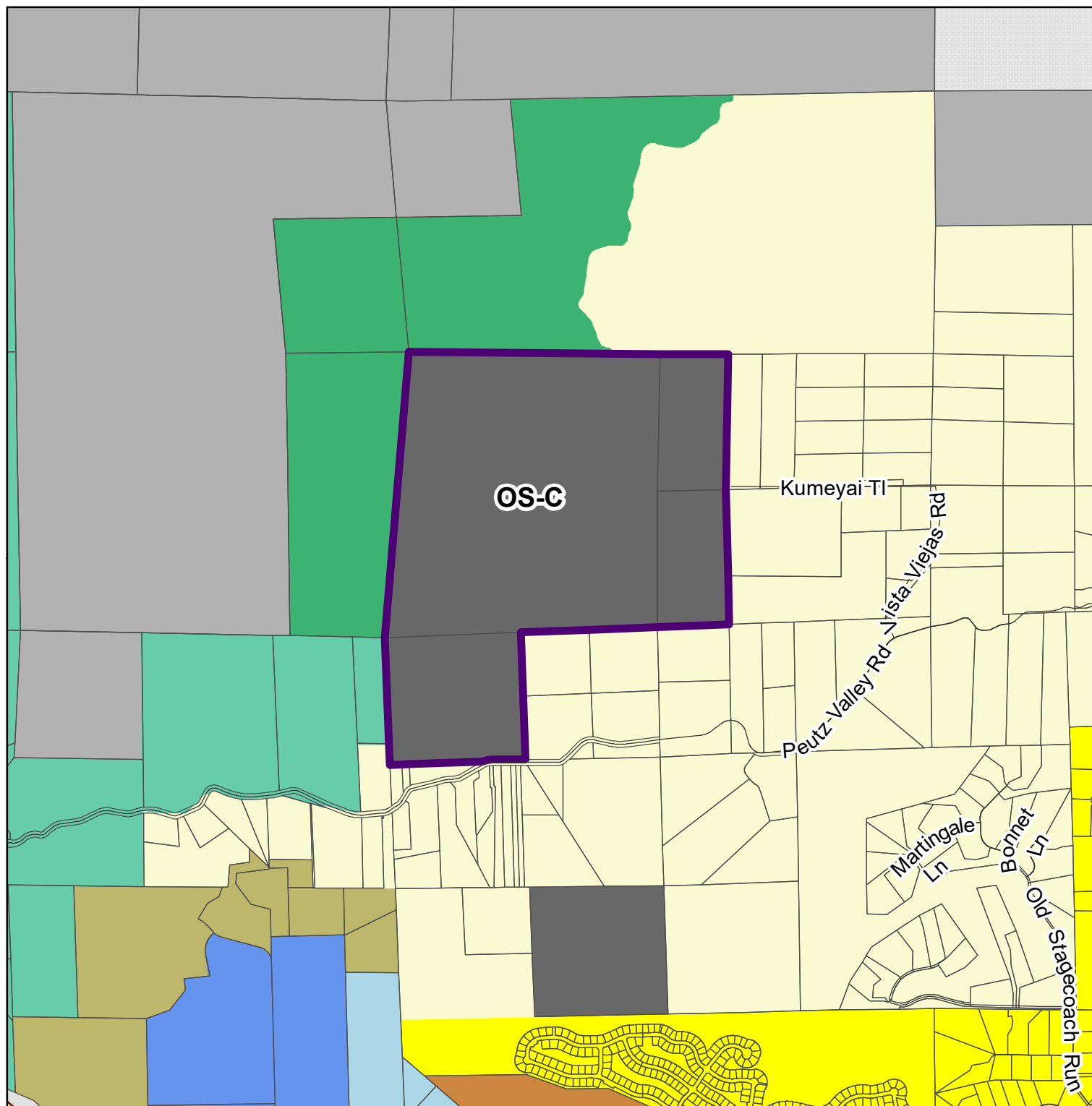
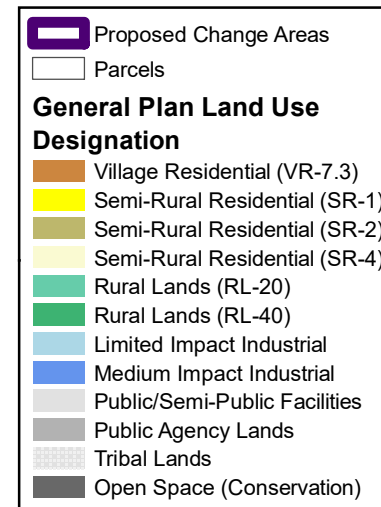
This page intentionally left blank

# 2019 General Plan Clean-Up GPA AL401

Proposed General Plan Change

Parcel Number(s): Total Parcels: 4

4021602000  
4021601800  
4021601900  
4022610100



THIS MAP/DATA IS PROVIDED WITHOUT WARRANTY OF ANY KIND, EITHER EXPRESS OR IMPLIED, INCLUDING BUT NOT LIMITED TO, THE IMPLIED WARRANTIES OF MERCHANTABILITY AND FITNESS FOR A PARTICULAR PURPOSE. Note: This product may contain information from the SANDAG Regional Information System which cannot be reproduced without the written permission of SANDAG. This product may contain information reproduced with permission granted by Rand McNally & Company® to SanGIS. This map is copyrighted by Rand McNally & Company®. It is unlawful to copy or reproduce all or any part thereof, whether for personal use or resale, without the prior, written permission of Rand McNally & Company®.

Copyright SanGIS 2015 - All Rights Reserved. Full text of this legal notice can be found at: [http://www.sangis.org/legal\\_notice.htm](http://www.sangis.org/legal_notice.htm)

**LUeGIS**  
Land Use & Environment Group  
Geographic Information Services

# 2019 General Plan Clean-Up GPA AL402

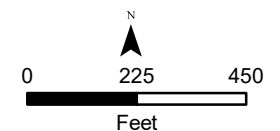
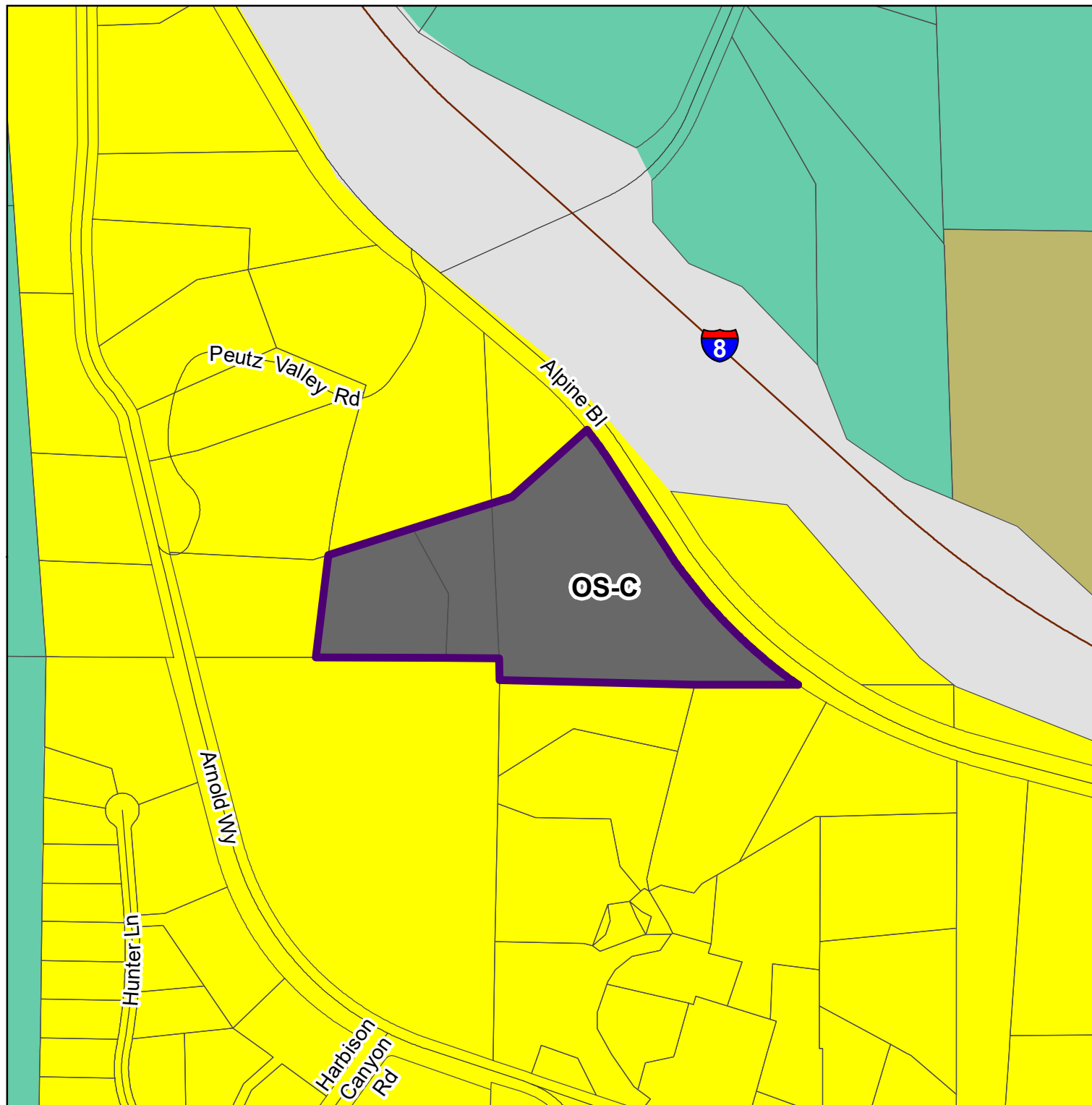
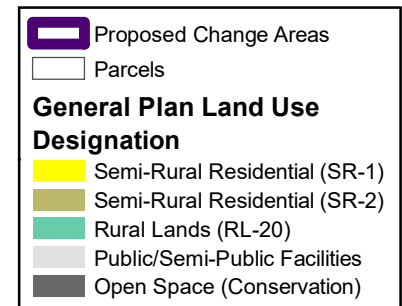
Proposed General Plan Change

Parcel Number(s): Total Parcels: 3

4022111100

4022111000

4022203800



THIS MAP/DATA IS PROVIDED WITHOUT WARRANTY OF ANY KIND, EITHER EXPRESS OR IMPLIED, INCLUDING BUT NOT LIMITED TO, THE IMPLIED WARRANTIES OF MERCHANTABILITY AND FITNESS FOR A PARTICULAR PURPOSE. Note: This product may contain information reproduced with permission of SANDAG. This product may contain information reproduced with permission granted by Rand McNally & Company® to SanGIS. This map is copyrighted by Rand McNally & Company®. It is unlawful to copy or reproduce all or any part thereof, whether for personal use or resale, without the prior, written permission of Rand McNally & Company®.

Copyright SanGIS 2015 - All Rights Reserved. Full text of this legal notice can be found at: [http://www.sangis.org/legal\\_notice.htm](http://www.sangis.org/legal_notice.htm)

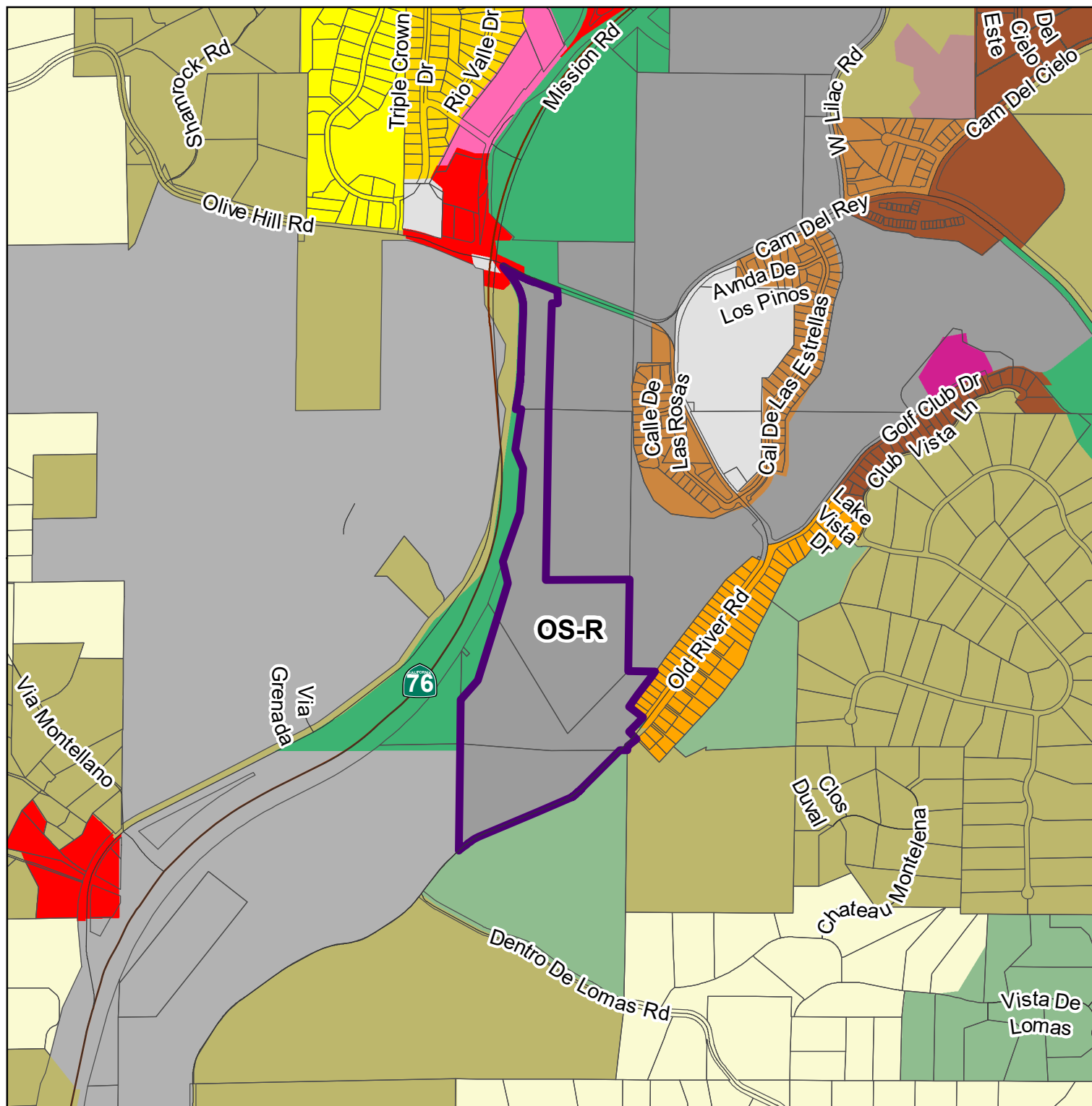
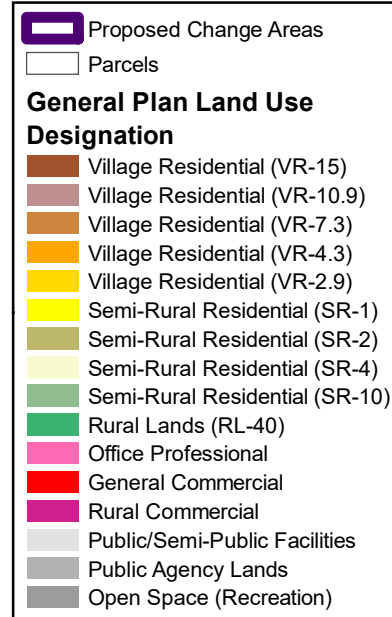
**LUeGIS**  
Land Use & Environment Group  
Geographic Information Services

# 2019 General Plan Clean-Up GPA BO401

Proposed General Plan Change

Parcel Number(s): Total Parcels: 4

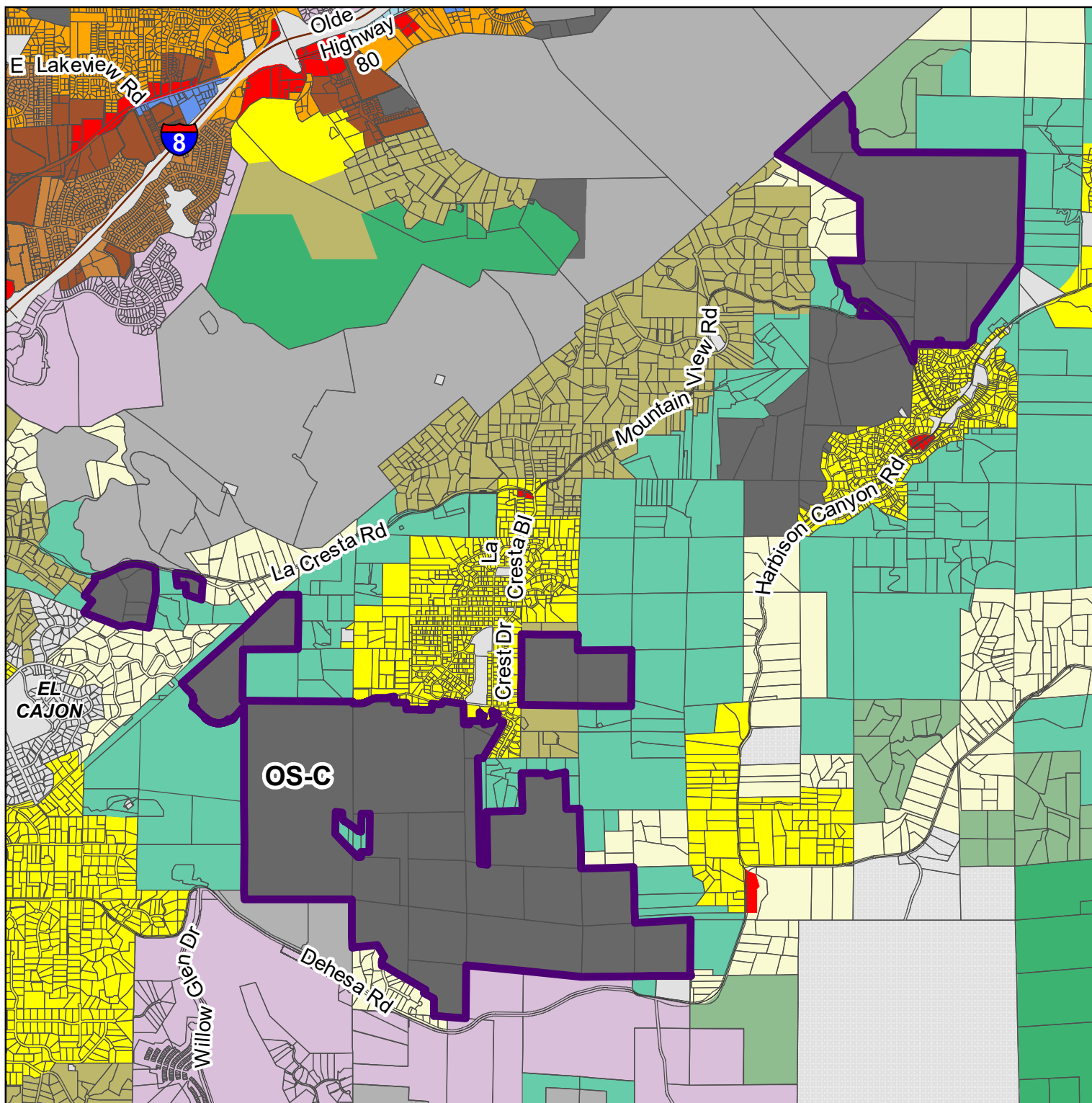
1261002000  
1261002300  
1262304800  
1261203000



THIS MAP/DATA IS PROVIDED WITHOUT WARRANTY OF ANY KIND, EITHER EXPRESS OR IMPLIED, INCLUDING BUT NOT LIMITED TO, THE IMPLIED WARRANTIES OF MERCHANTABILITY AND FITNESS FOR A PARTICULAR PURPOSE. Note: This product may contain information reproduced with permission of SANDAG. This product may contain information reproduced with permission granted by Rand McNally & Company® to SanGIS. This map is copyrighted by Rand McNally & Company®. It is unlawful to copy or reproduce all or any part thereof, whether for personal use or resale, without the prior, written permission of Rand McNally & Company®.

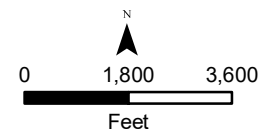
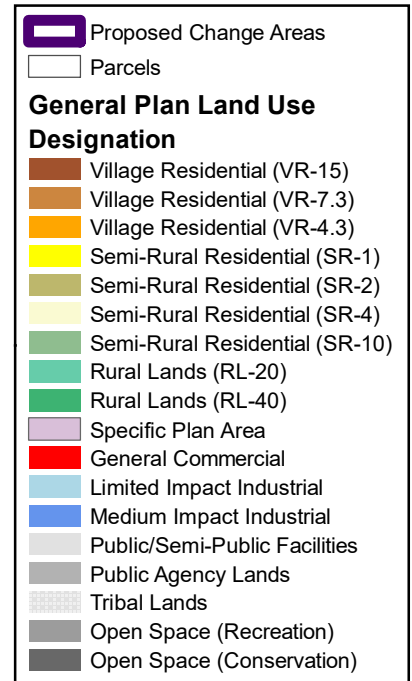
Copyright SanGIS 2015 - All Rights Reserved. Full text of this legal notice can be found at: [http://www.sangis.org/legal\\_notice.htm](http://www.sangis.org/legal_notice.htm)

**LUeGIS**  
Land Use & Environment Group  
Geographic Information Services



# 2019 General Plan Clean-Up GPA CD401

Proposed General Plan Change  
Parcel Number(s): Total Parcels: 42  
399020500



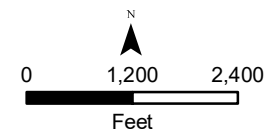
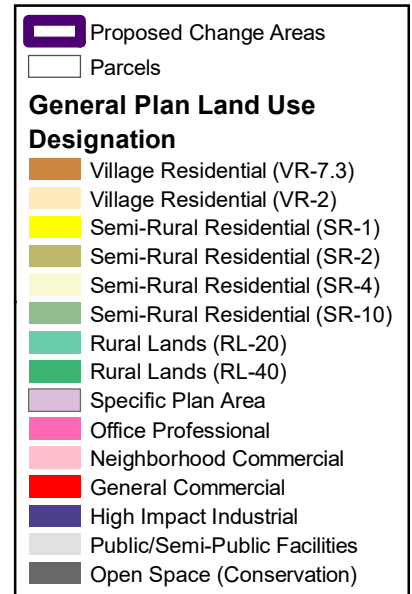
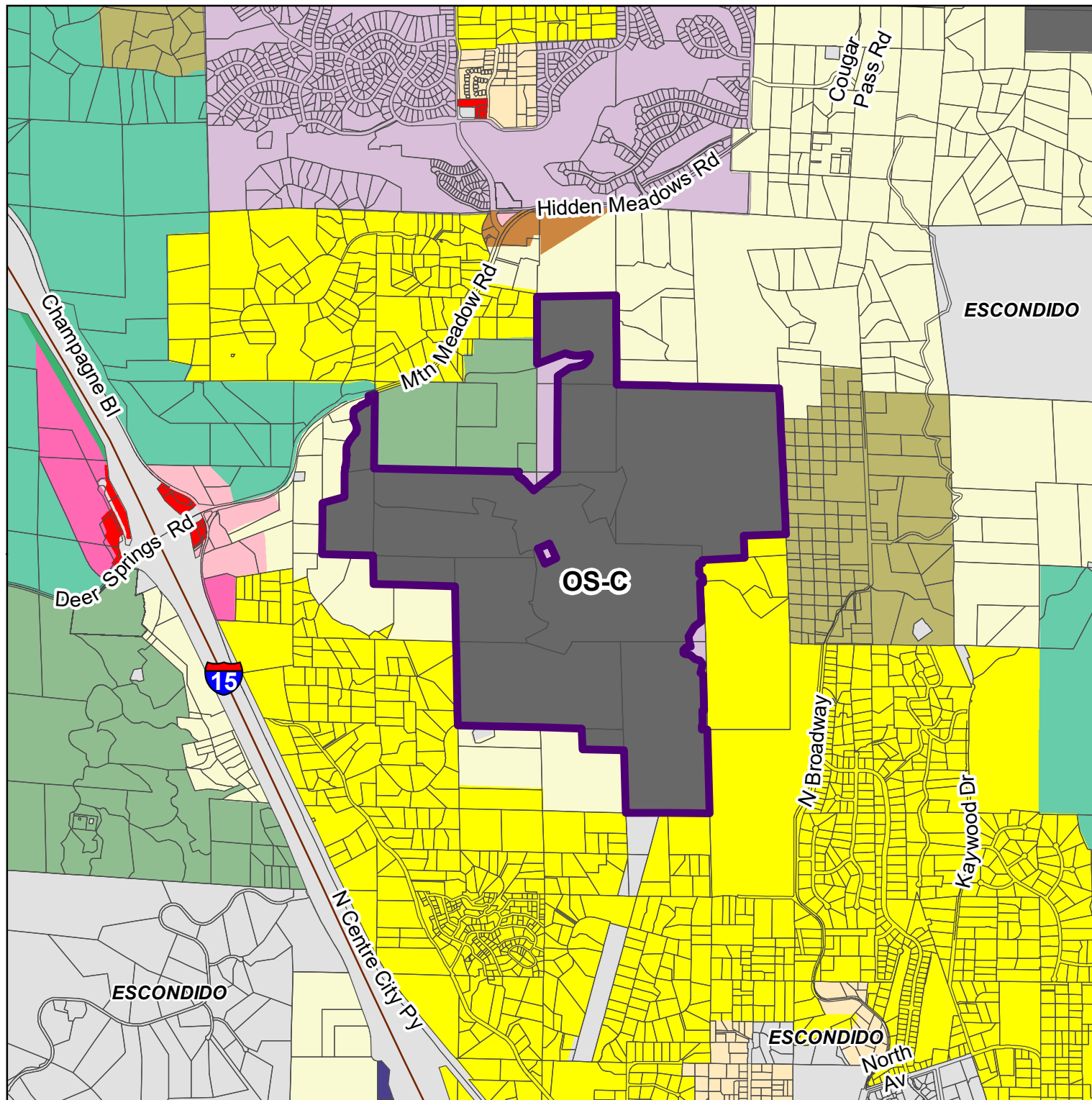
THIS MAP/DATA IS PROVIDED WITHOUT WARRANTY OF ANY KIND, EITHER EXPRESS OR IMPLIED, INCLUDING BUT NOT LIMITED TO, THE IMPLIED WARRANTIES OF MERCHANTABILITY AND FITNESS FOR A PARTICULAR PURPOSE. Note: This product may contain information reproduced with permission of SANDAG. This product may contain information reproduced with permission granted by Rand McNally & Company® to SanGIS. This map is copyrighted by Rand McNally & Company®. It is unlawful to copy or reproduce all or any part thereof, whether for personal use or resale, without the prior, written permission of Rand McNally & Company®. Copyright SanGIS 2015. All Rights Reserved. Full text of this legal notice can be found at: [http://www.sangis.org/legal\\_notice.htm](http://www.sangis.org/legal_notice.htm)

**LUEGGIS**  
Land Use & Environment Group  
Geographic Information Services



# 2019 General Plan Clean-Up GPA HM401

Proposed General Plan Change  
Parcel Number(s): 187041580  
Total Parcels: 14



THIS MAP/DATA IS PROVIDED WITHOUT WARRANTY OF ANY KIND, EITHER EXPRESS OR IMPLIED, INCLUDING BUT NOT LIMITED TO, THE IMPLIED WARRANTIES OF MERCHANTABILITY AND FITNESS FOR A PARTICULAR PURPOSE. Note: This product may contain information reproduced with permission from the SANDAG Regional Information System which cannot be reproduced without the written permission of SANDAG. This product may contain information reproduced with permission granted by Rand McNally & Company® to SanGIS. This map is copyrighted by Rand McNally & Company®. It is unlawful to copy or reproduce all or any part thereof, whether for personal use or resale, without the prior, written permission of Rand McNally & Company®.  
Copyright SanGIS 2015 - All Rights Reserved. Full text of this legal notice can be found at: [http://www.sangis.org/legal\\_notice.htm](http://www.sangis.org/legal_notice.htm)

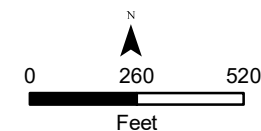
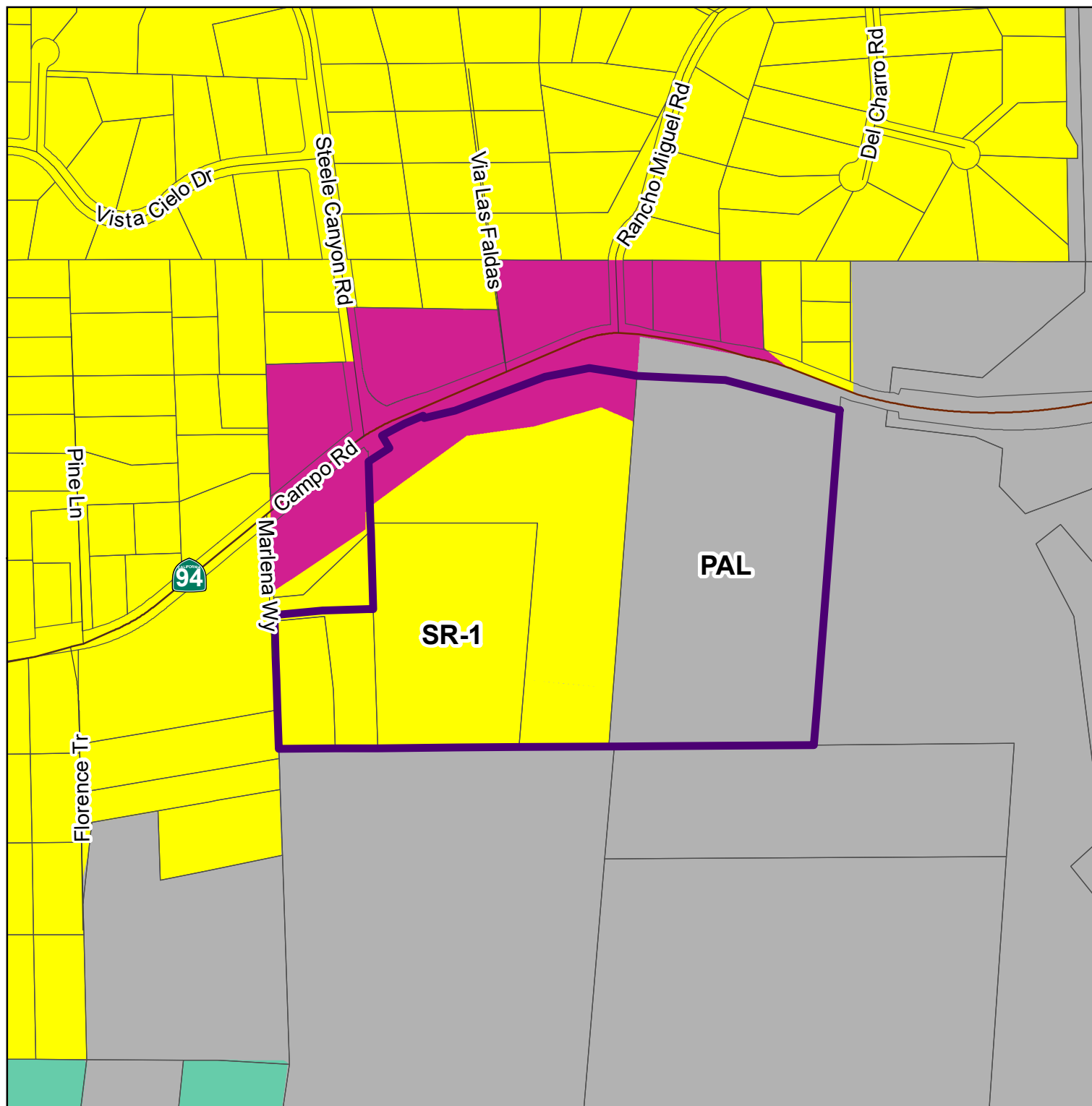
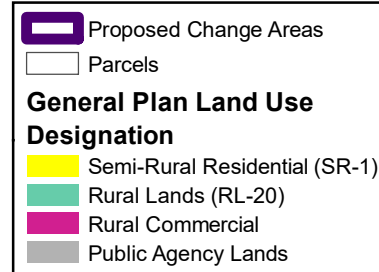
**LUEGGIS**  
Land Use & Environment Group  
Geographic Information Services

# 2019 General Plan Clean-Up GPA JD401

Proposed General Plan Change

Parcel Number(s): Total Parcels: 5

5960405800  
5960406200  
5960406600  
5960406800  
5960400700



THIS MAP/DATA IS PROVIDED WITHOUT WARRANTY OF ANY KIND, EITHER EXPRESS OR IMPLIED, INCLUDING BUT NOT LIMITED TO, THE IMPLIED WARRANTIES OF MERCHANTABILITY AND FITNESS FOR A PARTICULAR PURPOSE. Note: This product may contain information from the SANDAG Regional Information System which cannot be reproduced without the written permission of SANDAG. This product may contain information reproduced with permission granted by Rand McNally & Company® to SanGIS. This map is copyrighted by Rand McNally & Company®. It is unlawful to copy or reproduce all or any part thereof, whether for personal use or resale, without the prior, written permission of Rand McNally & Company®.  
Copyright SanGIS 2015 - All Rights Reserved. Full text of this legal notice can be found at: [http://www.sangis.org/legal\\_notice.htm](http://www.sangis.org/legal_notice.htm)

**LUeGIS**  
Land Use & Environment Group  
Geographic Information Services

# 2019 General Plan Clean-Up GPA JD402

Proposed General Plan Change

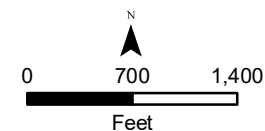
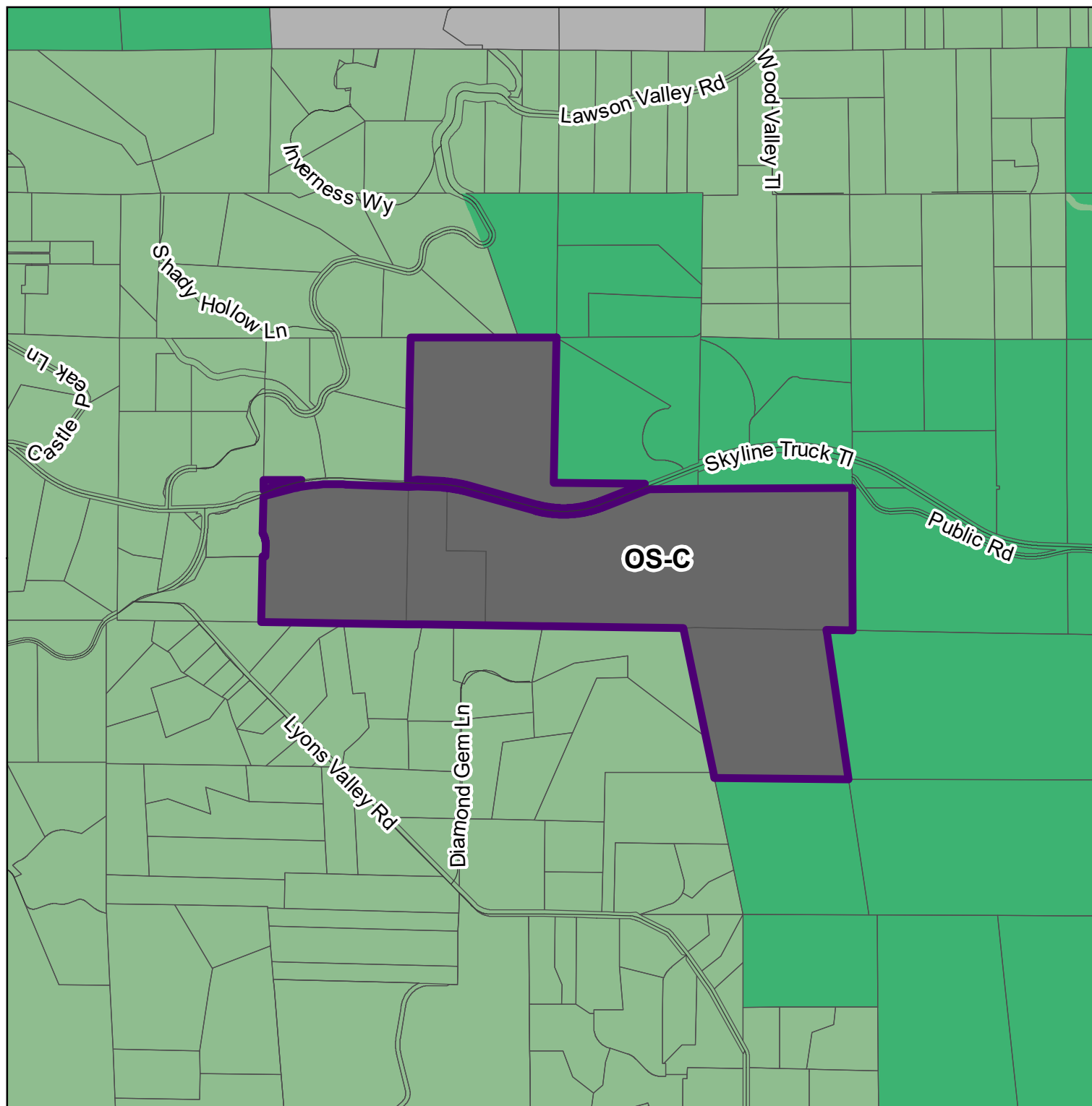
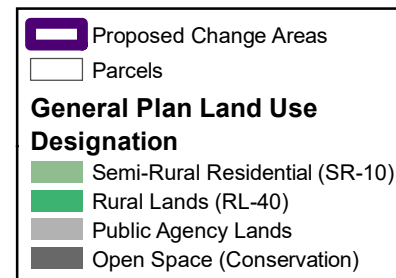
Parcel Number(s): Total Parcels: 4

5220810700

5220810800

5222511300

5990410100





THIS MAP/DATA IS PROVIDED WITHOUT WARRANTY OF ANY KIND, EITHER EXPRESS OR IMPLIED, INCLUDING BUT NOT LIMITED TO, THE IMPLIED WARRANTIES OF MERCHANTABILITY AND FITNESS FOR A PARTICULAR PURPOSE. Note: This product may contain information reproduced with permission of SANDAG. This product may contain information reproduced with permission granted by Rand McNally & Company® to SanGIS. This map is copyrighted by Rand McNally & Company®. It is unlawful to copy or reproduce all or any part thereof, whether for personal use or resale, without the prior, written permission of Rand McNally & Company®.  
Copyright SanGIS 2015 - All Rights Reserved. Full text of this legal notice can be found at: [http://www.sangis.org/legal\\_notice.htm](http://www.sangis.org/legal_notice.htm)

**LUeGIS**  
Land Use & Environment Group  
Geographic Information Services





# 2019 General Plan Clean-Up GPA LS401

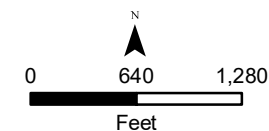
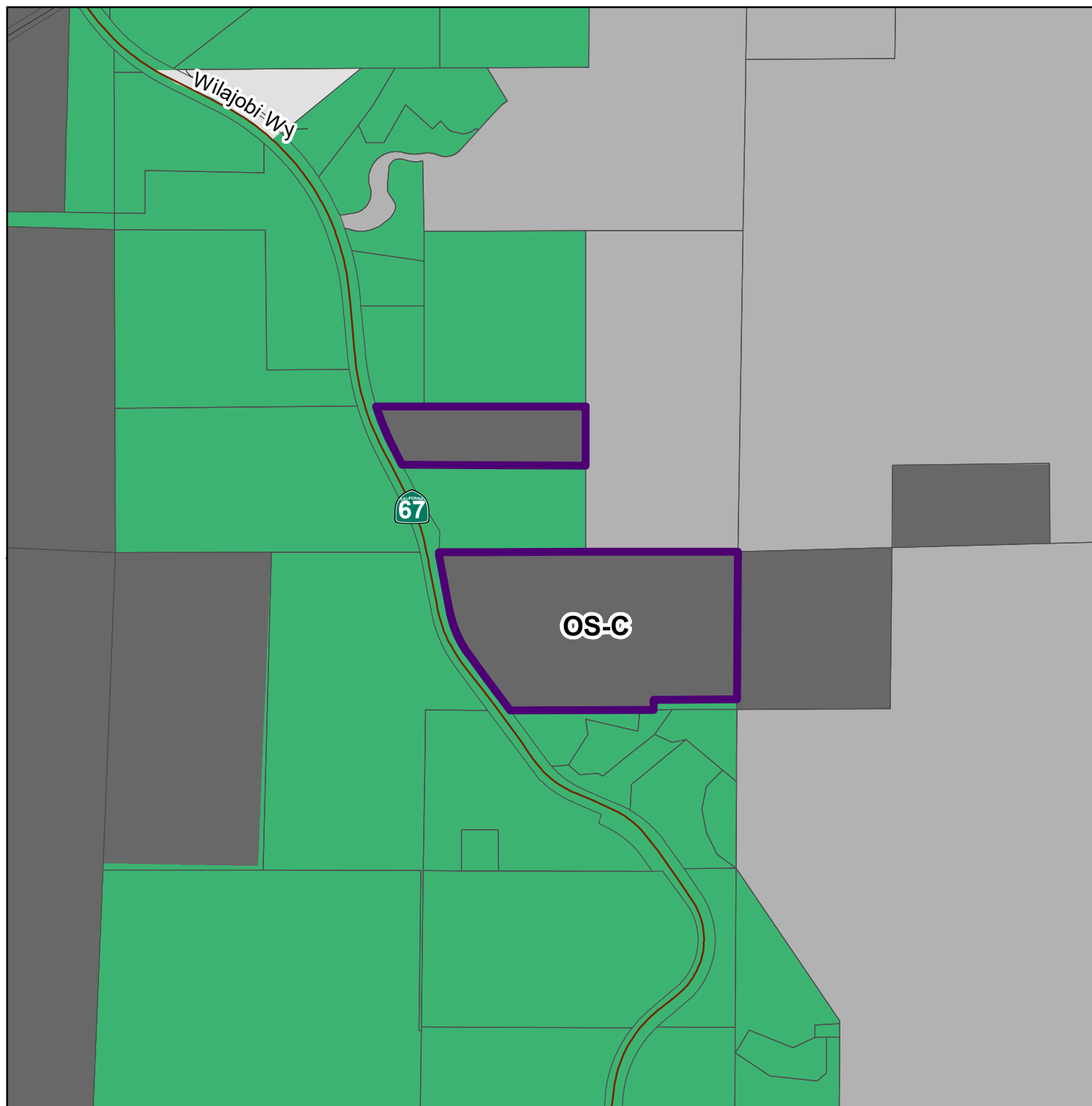
Proposed General Plan Change

Parcel Number(s): Total Parcels: 2  
3260202300

 Proposed Change Areas  
 Parcels

**General Plan Land Use  
Designation**

 Rural Lands (RL-40)  
 Public/Semi-Public Facilities  
 Public Agency Lands  
 Open Space (Conservation)



THIS MAP/DATA IS PROVIDED WITHOUT WARRANTY OF ANY KIND, EITHER EXPRESS OR IMPLIED, INCLUDING BUT NOT LIMITED TO, THE IMPLIED WARRANTIES OF MERCHANTABILITY AND FITNESS FOR A PARTICULAR PURPOSE. Note: This product may contain information reproduced with permission of SANDAG. This product may contain information reproduced with permission granted by Rand McNally & Company® to SanGIS. This map is copyrighted by Rand McNally & Company®. It is unlawful to copy or reproduce all or any part thereof, whether for personal use or resale, without the prior, written permission of Rand McNally & Company®.  
Copyright SanGIS 2015 - All Rights Reserved. Full text of this legal notice can be found at: [http://www.sangis.org/legal\\_notice.htm](http://www.sangis.org/legal_notice.htm)

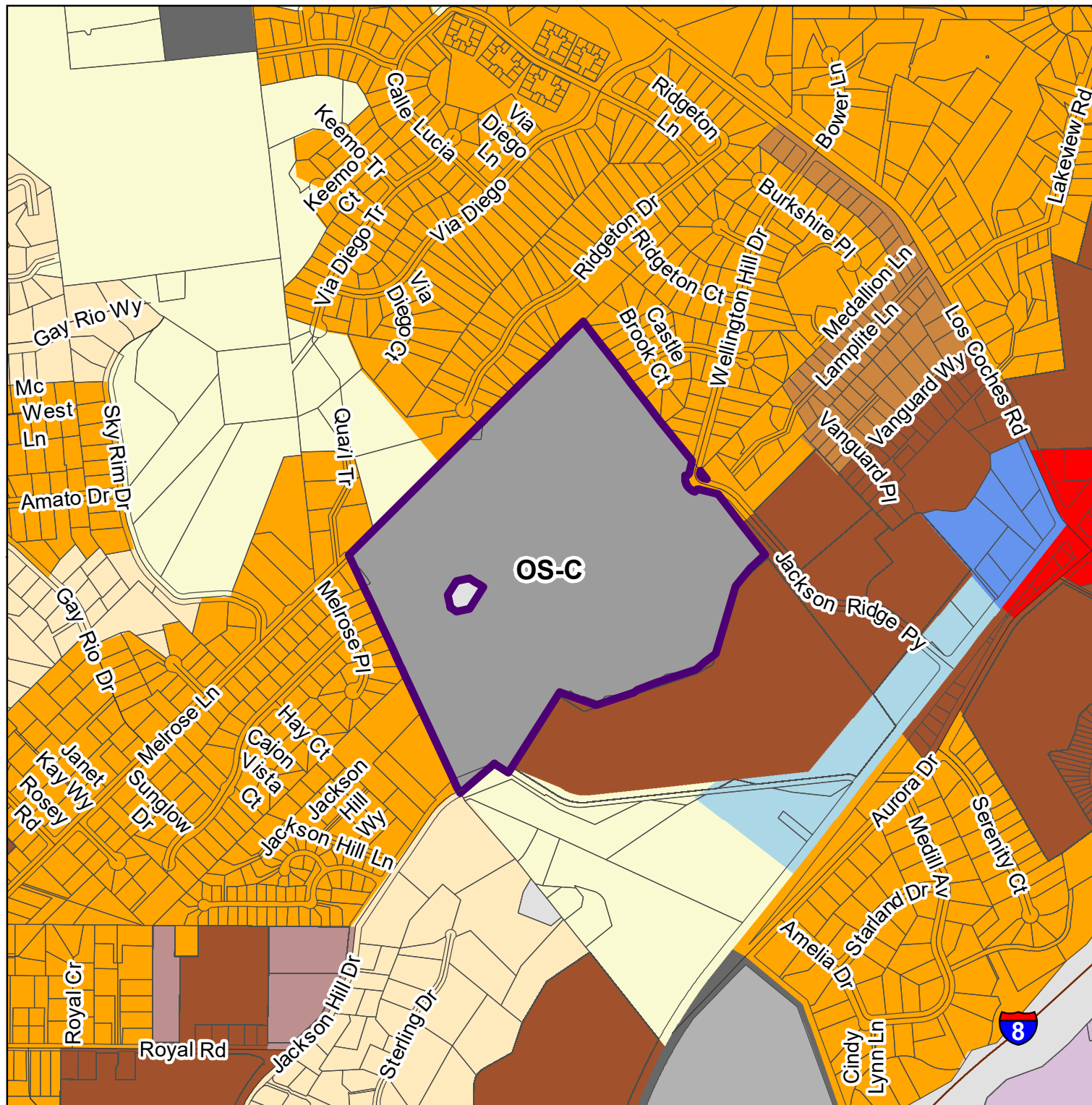
**LUeGIS**  
Land Use & Environment Group  
Geographic Information Services



# 2019 General Plan Clean-Up GPA LS403

Proposed General Plan Change

Parcel Number(s):          Total Parcels: 1  
3971802500

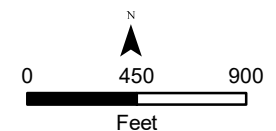


**Proposed Change Areas**

**Parcels**

**General Plan Land Use Designation**

- Village Residential (VR-15)
- Village Residential (VR-10.9)
- Village Residential (VR-7.3)
- Village Residential (VR-4.3)
- Village Residential (VR-2)
- Semi-Rural Residential (SR-4)
- Specific Plan Area
- General Commercial
- Limited Impact Industrial
- Medium Impact Industrial
- Public/Semi-Public Facilities
- Public Agency Lands
- Open Space (Recreation)
- Open Space (Conservation)



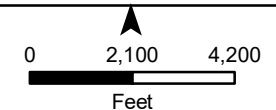
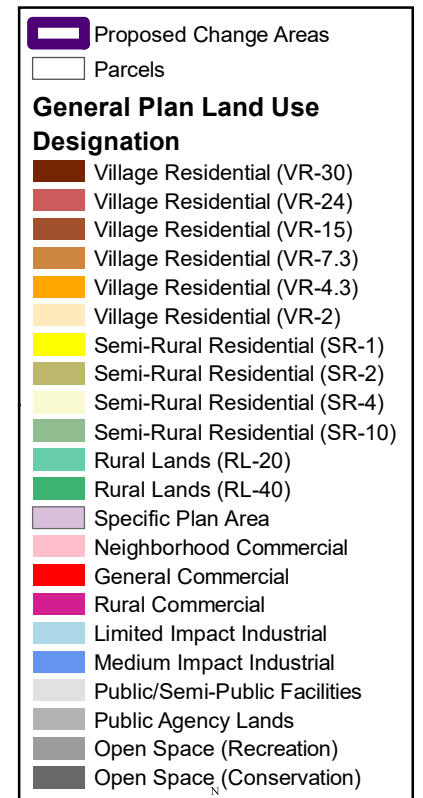
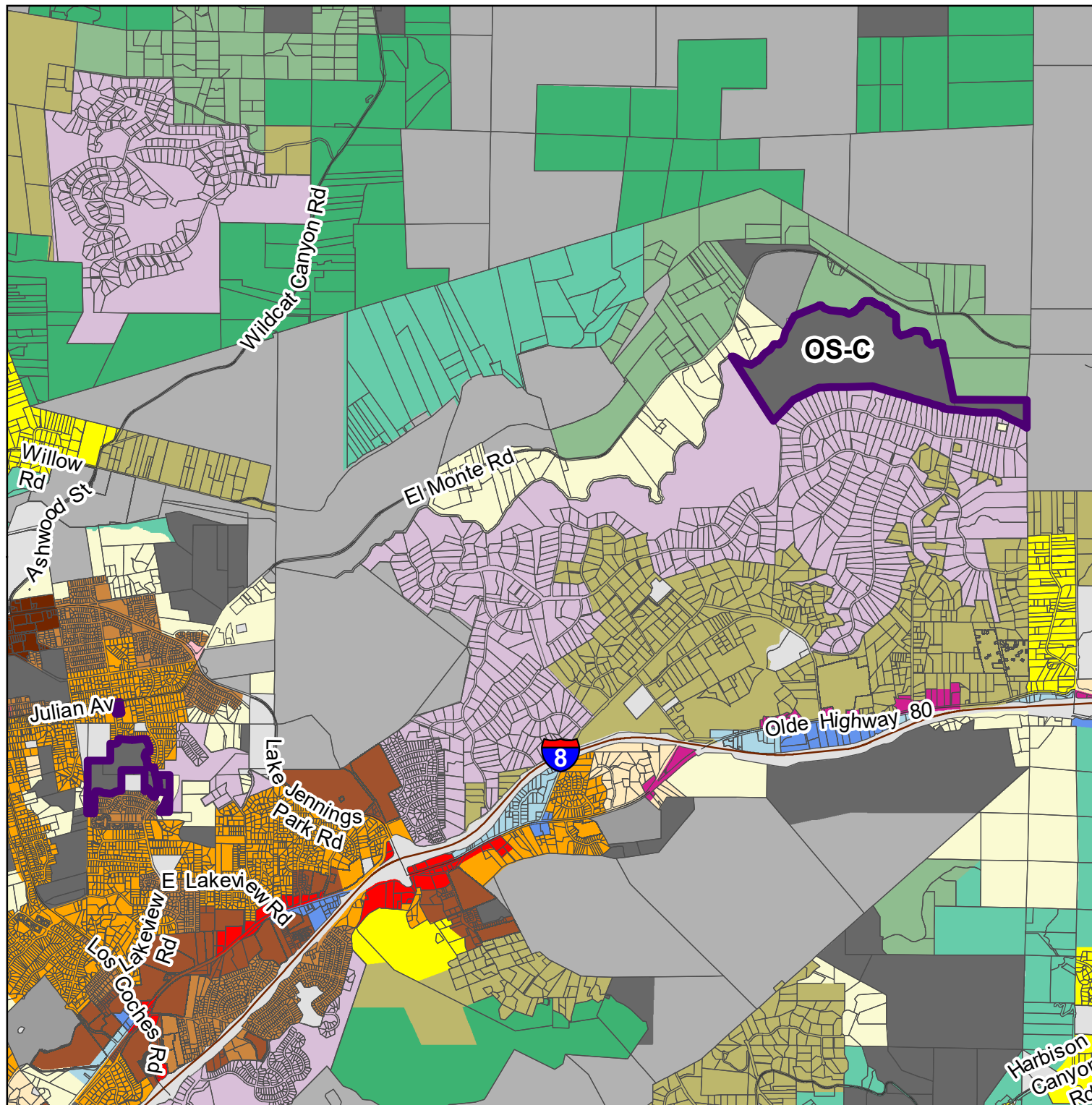
THIS MAP/DATA IS PROVIDED WITHOUT WARRANTY OF ANY KIND, EITHER EXPRESS OR IMPLIED, INCLUDING BUT NOT LIMITED TO, THE IMPLIED WARRANTIES OF MERCHANTABILITY AND FITNESS FOR A PARTICULAR PURPOSE. Note: This product may contain information reproduced with permission of SANDAG. This product may contain information reproduced with permission granted by Rand McNally & Company® to SanGIS. This map is copyrighted by Rand McNally & Company®. It is unlawful to copy or reproduce all or any part thereof, whether for personal use or resale, without the prior, written permission of Rand McNally & Company®. Copyright SanGIS 2015. All Rights Reserved. Full text of this legal notice can be found at: [http://www.sangis.org/legal\\_notice.htm](http://www.sangis.org/legal_notice.htm)



# 2019 General Plan Clean-Up GPA LS406

Proposed General Plan Change

Parcel Number(s):      Total Parcels: 8  
390061030



THIS MAP/DATA IS PROVIDED WITHOUT WARRANTY OF ANY KIND, EITHER EXPRESS OR IMPLIED, INCLUDING BUT NOT LIMITED TO, THE IMPLIED WARRANTIES OF MERCHANTABILITY AND FITNESS FOR A PARTICULAR PURPOSE. Note: This product may contain information from the SANDAG Regional Information System which cannot be reproduced without the written permission of SANDAG. This product may contain information reproduced with permission granted by Rand McNally & Company® to SanGIS. This map is copyrighted by Rand McNally & Company®. It is unlawful to copy or reproduce all or any part thereof, whether for personal use or resale, without the prior, written permission of Rand McNally & Company®.  
Copyright SanGIS 2015 - All Rights Reserved. Full text of this legal notice can be found at: [http://www.sandag.org/legal\\_notice.htm](http://www.sandag.org/legal_notice.htm)

**LUeGIS**  
Land Use & Environment Group  
Geographic Information Services

# 2019 General Plan Clean-Up GPA NM401

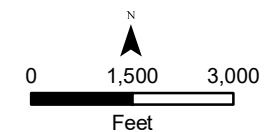
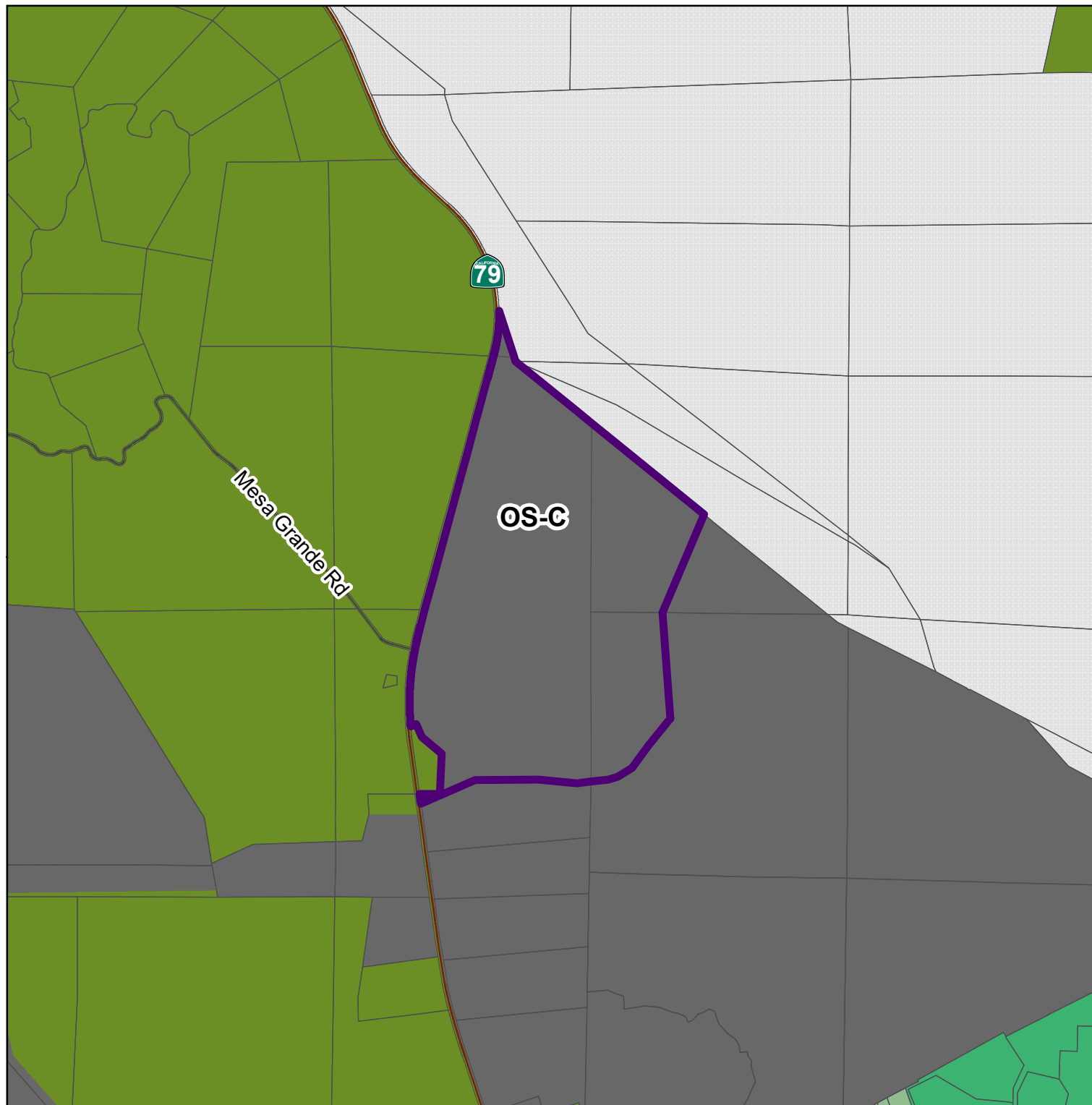
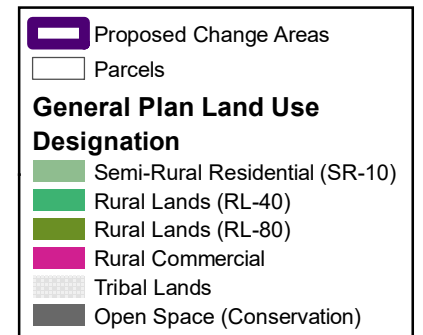
Proposed General Plan Change

Parcel Number(s): Total Parcels: 6

2470610200

2471000700

2470310300



THIS MAP/DATA IS PROVIDED WITHOUT WARRANTY OF ANY KIND, EITHER EXPRESS OR IMPLIED, INCLUDING BUT NOT LIMITED TO, THE IMPLIED WARRANTIES OF MERCHANTABILITY AND FITNESS FOR A PARTICULAR PURPOSE. Note: This product may contain information reproduced with permission of SANDAG. This product may contain information reproduced with permission granted by Rand McNally & Company® to SanGIS. This map is copyrighted by Rand McNally & Company®. It is unlawful to copy or reproduce all or any part thereof, whether for personal use or resale, without the prior, written permission of Rand McNally & Company®.

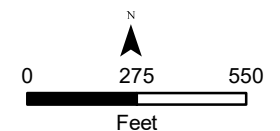
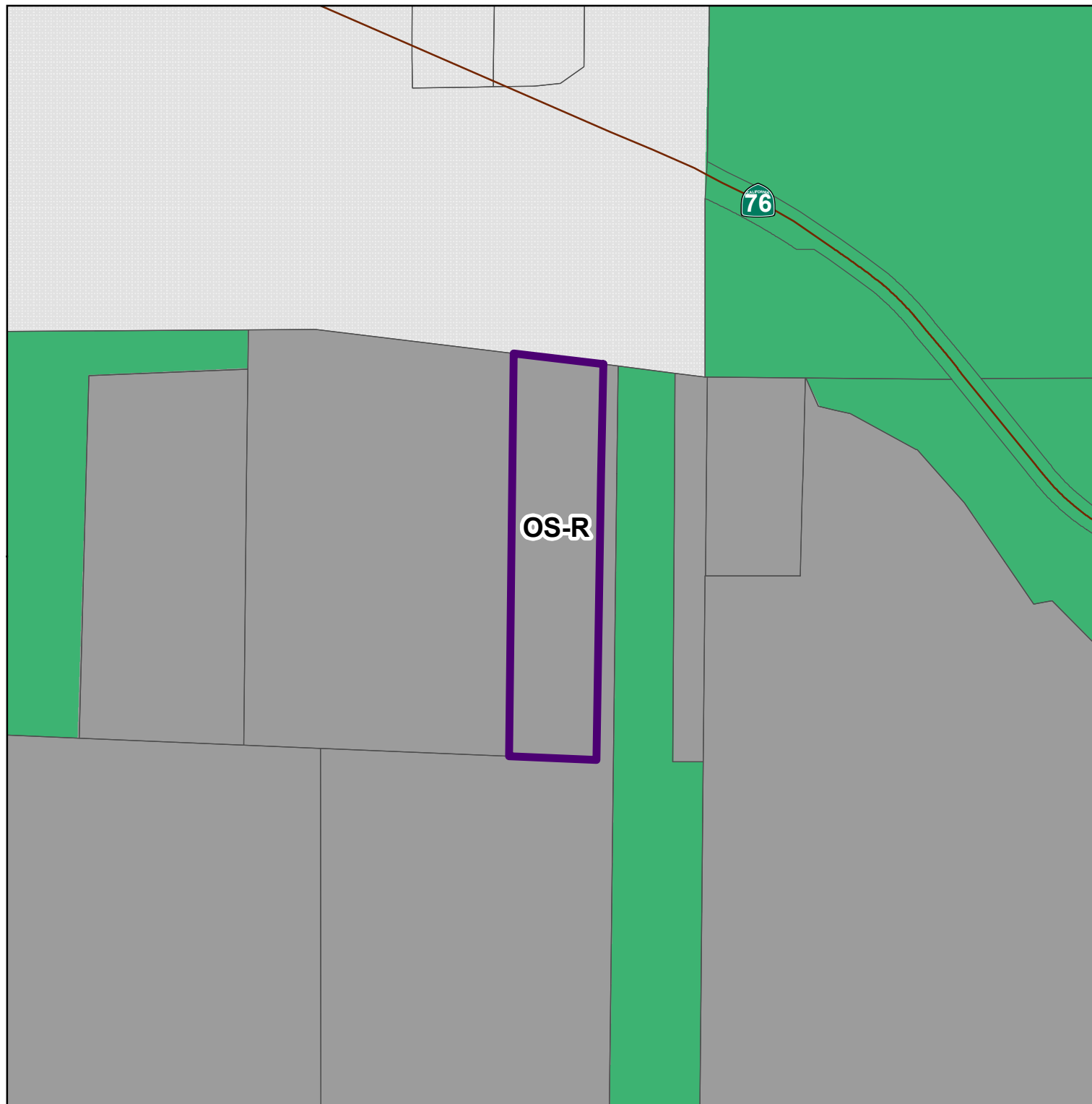
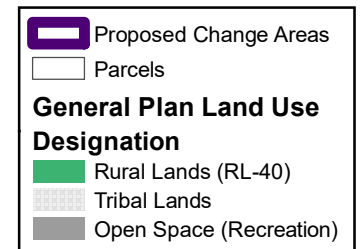
Copyright SanGIS 2015 - All Rights Reserved. Full text of this legal notice can be found at: [http://www.sangis.org/legal\\_notice.htm](http://www.sangis.org/legal_notice.htm)

**LUeGIS**  
Land Use & Environment Group  
Geographic Information Services



# 2019 General Plan Clean-Up GPA PP401

Proposed General Plan Change  
Parcel Number(s): Total Parcels: 1  
1101900600



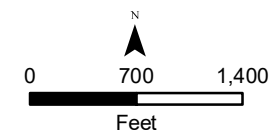
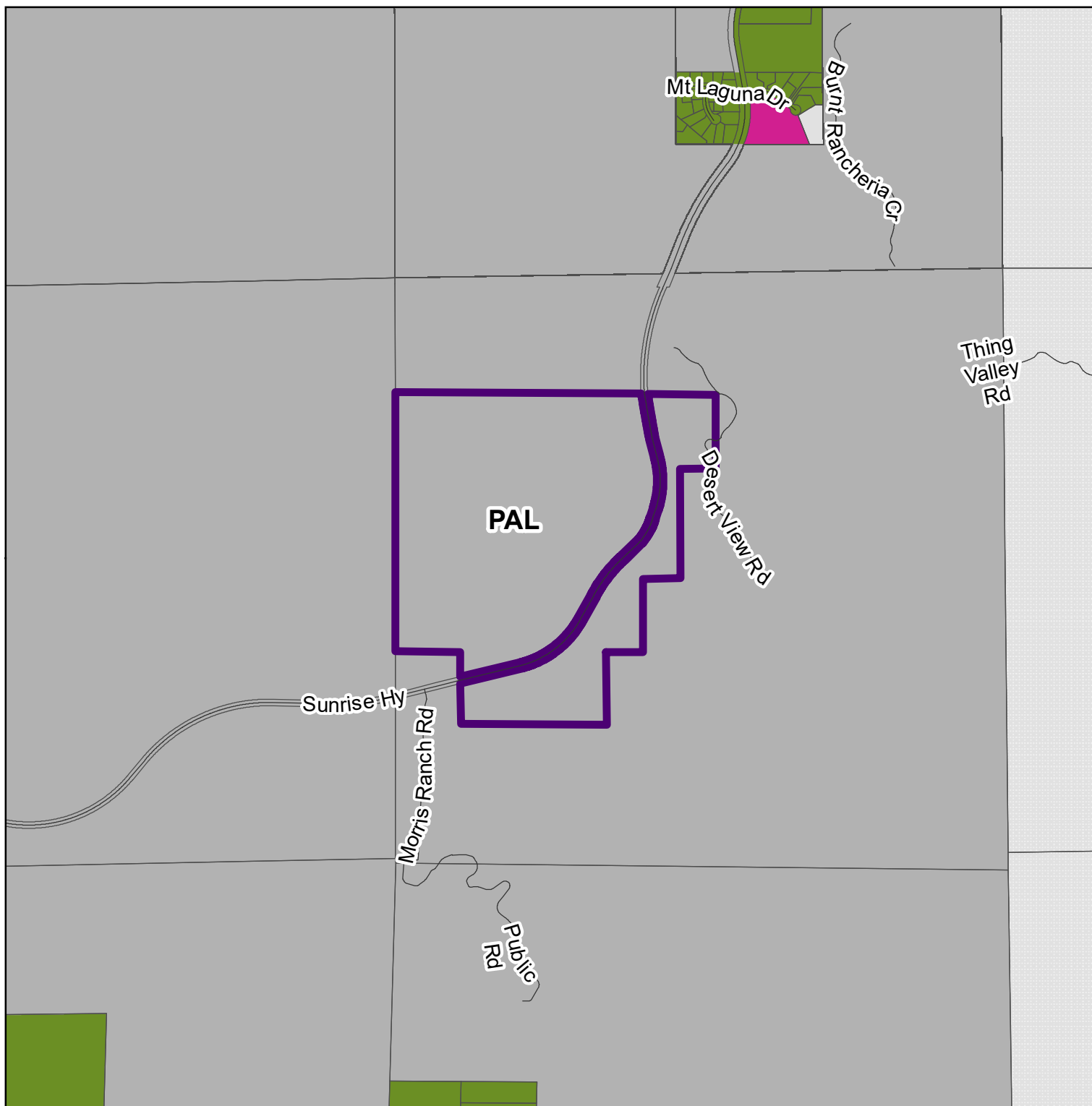
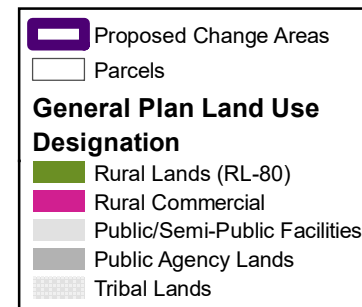
THIS MAP/DATA IS PROVIDED WITHOUT WARRANTY OF ANY KIND, EITHER EXPRESS OR IMPLIED, INCLUDING BUT NOT LIMITED TO, THE IMPLIED WARRANTIES OF MERCHANTABILITY AND FITNESS FOR A PARTICULAR PURPOSE. Note: This product may contain information reproduced with permission of SANDAG. This product may contain information reproduced with permission granted by Rand McNally & Company® to SanGIS. This map is copyrighted by Rand McNally & Company®. It is unlawful to copy or reproduce all or any part thereof, whether for personal use or resale, without the prior, written permission of Rand McNally & Company®.  
 Copyright SanGIS 2015 - All Rights Reserved. Full text of this legal notice can be found at: [http://www.sangis.org/legal\\_notice.htm](http://www.sangis.org/legal_notice.htm)

**LUeGIS**  
 Land Use & Environment Group  
 Geographic Information Services



# 2019 General Plan Clean-Up GPA PV401

Proposed General Plan Change  
Parcel Number(s): Total Parcels: 1  
4120400200

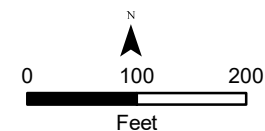
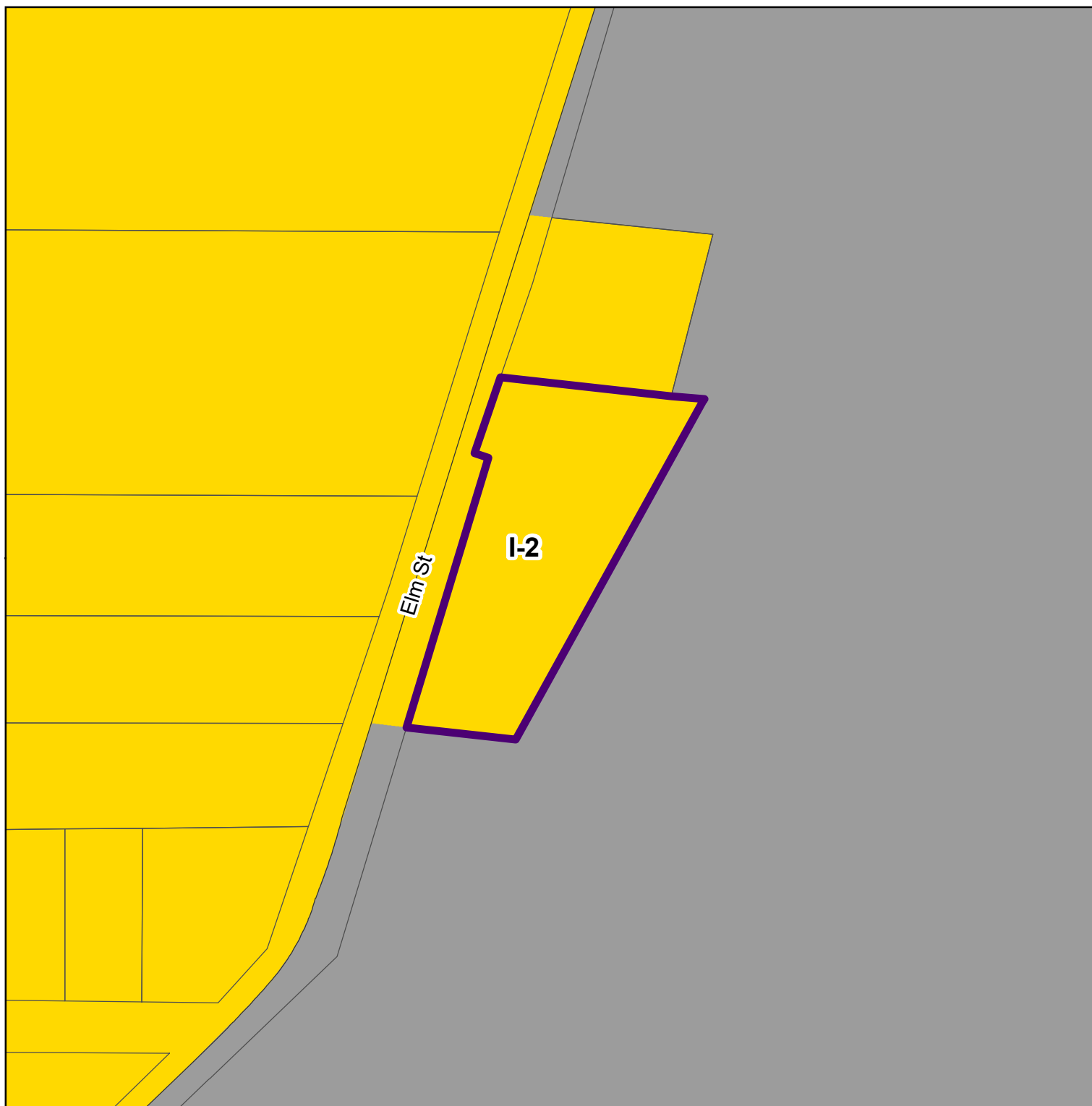
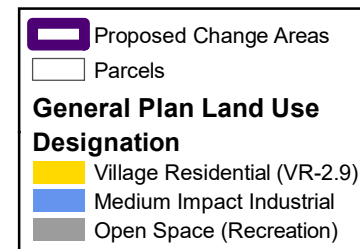


THIS MAP/DATA IS PROVIDED WITHOUT WARRANTY OF ANY KIND, EITHER EXPRESS OR IMPLIED, INCLUDING BUT NOT LIMITED TO, THE IMPLIED WARRANTIES OF MERCHANTABILITY AND FITNESS FOR A PARTICULAR PURPOSE. Note: This product may contain information reproduced with permission granted by Rand McNally & Company® to SanGIS. This map is copyrighted by Rand McNally & Company®. It is unlawful to copy or reproduce all or any part thereof, whether for personal use or resale, without the prior, written permission of Rand McNally & Company®.  
Copyright SanGIS 2015. All Rights Reserved. Full text of this legal notice can be found at: [http://www.sangis.org/legal\\_notice.htm](http://www.sangis.org/legal_notice.htm)

**LUeGIS**  
Land Use & Environment Group  
Geographic Information Services

# 2019 General Plan Clean-Up GPA RM402

Proposed General Plan Change  
Parcel Number(s): Total Parcels: 1  
2801250600



THIS MAP/DATA IS PROVIDED WITHOUT WARRANTY OF ANY KIND, EITHER EXPRESS OR IMPLIED, INCLUDING BUT NOT LIMITED TO, THE IMPLIED WARRANTIES OF MERCHANTABILITY AND FITNESS FOR A PARTICULAR PURPOSE. Note: This product may contain information from the SANDAG Regional Information System which cannot be reproduced without the written permission of SANDAG. This product may contain information reproduced with permission granted by Rand McNally & Company® to SanGIS. This map is copyrighted by Rand McNally & Company®. It is unlawful to copy or reproduce all or any part thereof, whether for personal use or resale, without the prior, written permission of Rand McNally & Company®.  
Copyright SanGIS 2015. All Rights Reserved. Full text of this legal notice can be found at: [http://www.sangis.org/legal\\_notice.htm](http://www.sangis.org/legal_notice.htm)


**LUeGIS**  
Land Use & Environment Group  
Geographic Information Services

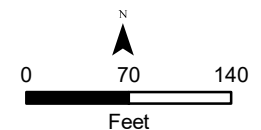
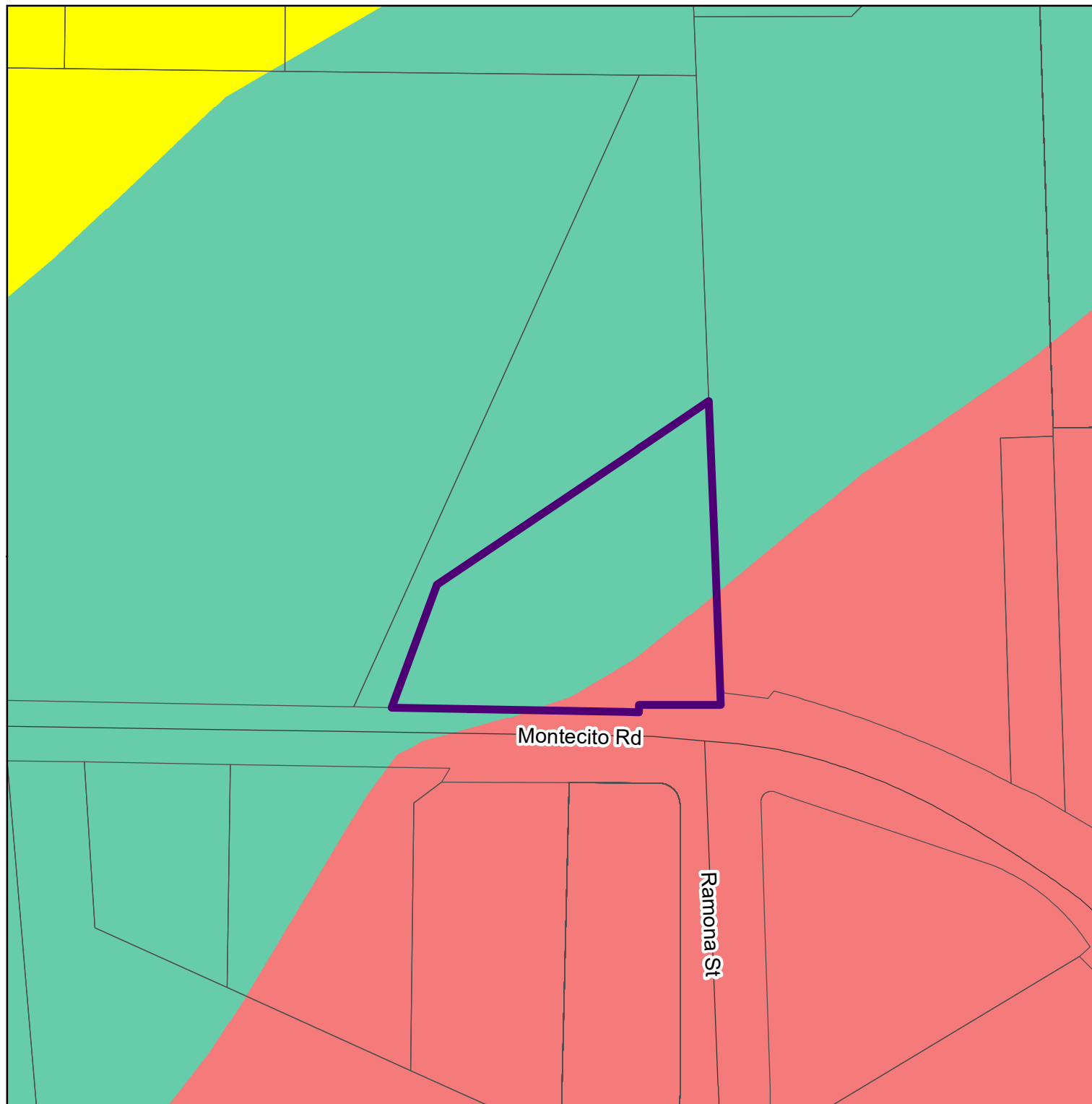
# 2019 General Plan Clean-Up GPA RM403

Proposed General Plan Change  
Parcel Number(s): Total Parcels: 1  
2810931700

 Proposed Change Areas  
 Parcels

**General Plan Land Use Designation**

 Village Residential (VR-20)  
 Semi-Rural Residential (SR-1)  
 Rural Lands (RL-20)



THIS MAP/DATA IS PROVIDED WITHOUT WARRANTY OF ANY KIND, EITHER EXPRESS OR IMPLIED, INCLUDING BUT NOT LIMITED TO, THE IMPLIED WARRANTIES OF MERCHANTABILITY AND FITNESS FOR A PARTICULAR PURPOSE. Note: This product may contain information reproduced with permission of SANDAG. This product may contain information reproduced with permission granted by Rand McNally & Company® to SanGIS. This map is copyrighted by Rand McNally & Company®. It is unlawful to copy or reproduce all or any part thereof, whether for personal use or resale, without the prior, written permission of Rand McNally & Company®.

Copyright SanGIS 2015 - All Rights Reserved. Full text of this legal notice can be found at: [http://www.sangis.org/legal\\_notice.htm](http://www.sangis.org/legal_notice.htm)

**LUeGIS**  
Land Use & Environment Group  
Geographic Information Services


# 2019 General Plan Clean-Up GPA SD401

Proposed General Plan Change  
Parcel Number(s): Total Parcels: 1  
2230810600

**SAN MARCOS**

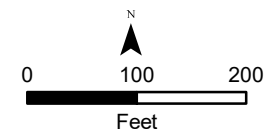
**P/SP**

**ENCINITAS**

 Proposed Change Areas  
 Parcels

**General Plan Land Use  
Designation**

 Semi-Rural Residential (SR-10)  
 Public/Semi-Public Facilities

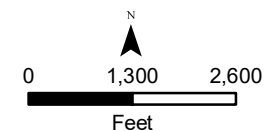
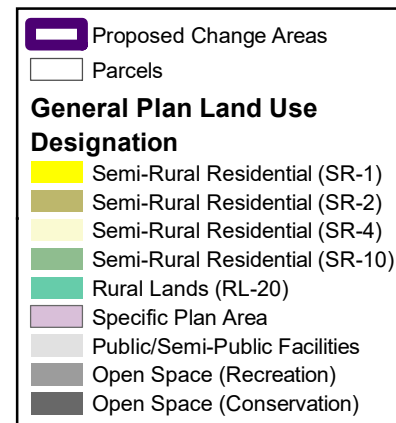
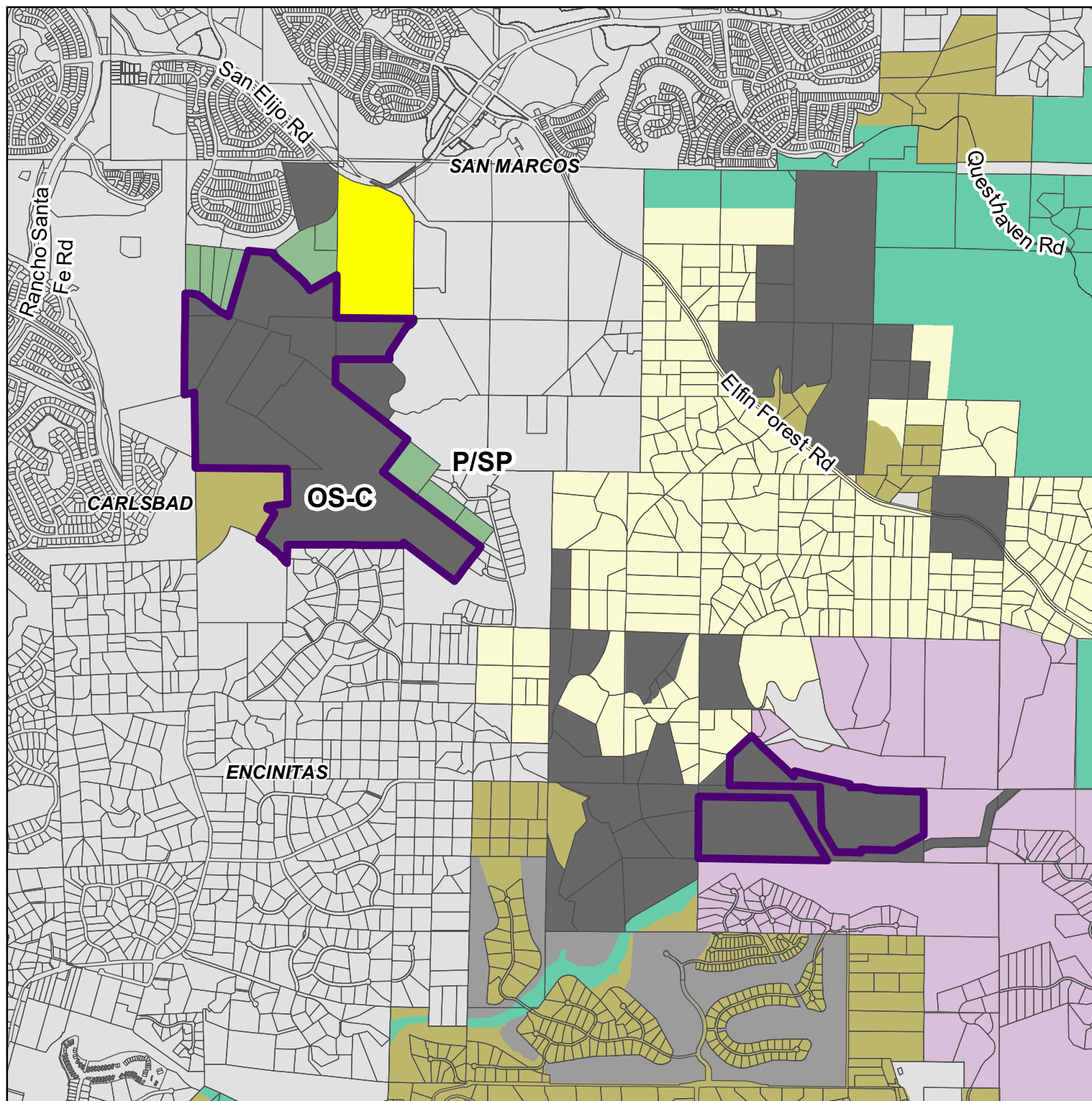


THIS MAP/DATA IS PROVIDED WITHOUT WARRANTY OF ANY KIND, EITHER EXPRESS OR IMPLIED, INCLUDING BUT NOT LIMITED TO, THE IMPLIED WARRANTIES OF MERCHANTABILITY AND FITNESS FOR A PARTICULAR PURPOSE. Note: This product may contain information from the SANDAG Regional Information System which cannot be reproduced without the written permission of SANDAG. This product may contain information reproduced with permission granted by Rand McNally & Company® to SanGIS. This map is copyrighted by Rand McNally & Company®. It is unlawful to copy or reproduce all or any part thereof, whether for personal use or resale, without the prior, written permission of Rand McNally & Company®.  
Copyright SanGIS 2015. All Rights Reserved. Full text of this legal notice can be found at: [http://www.sangis.org/legal\\_notice.htm](http://www.sangis.org/legal_notice.htm)

**LUeGIS**  
Land Use & Environment Group  
Geographic Information Services

# 2019 General Plan Clean-Up GPA SD402

Proposed General Plan Change  
Parcel Number(s):          Total Parcels: 8

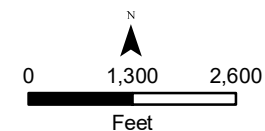
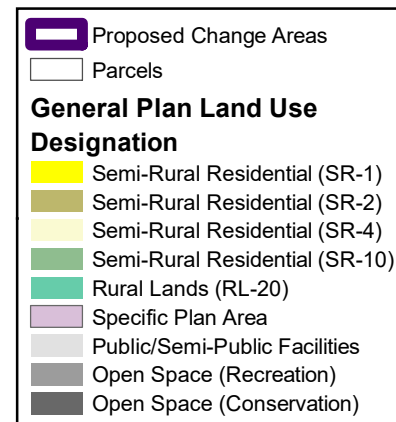
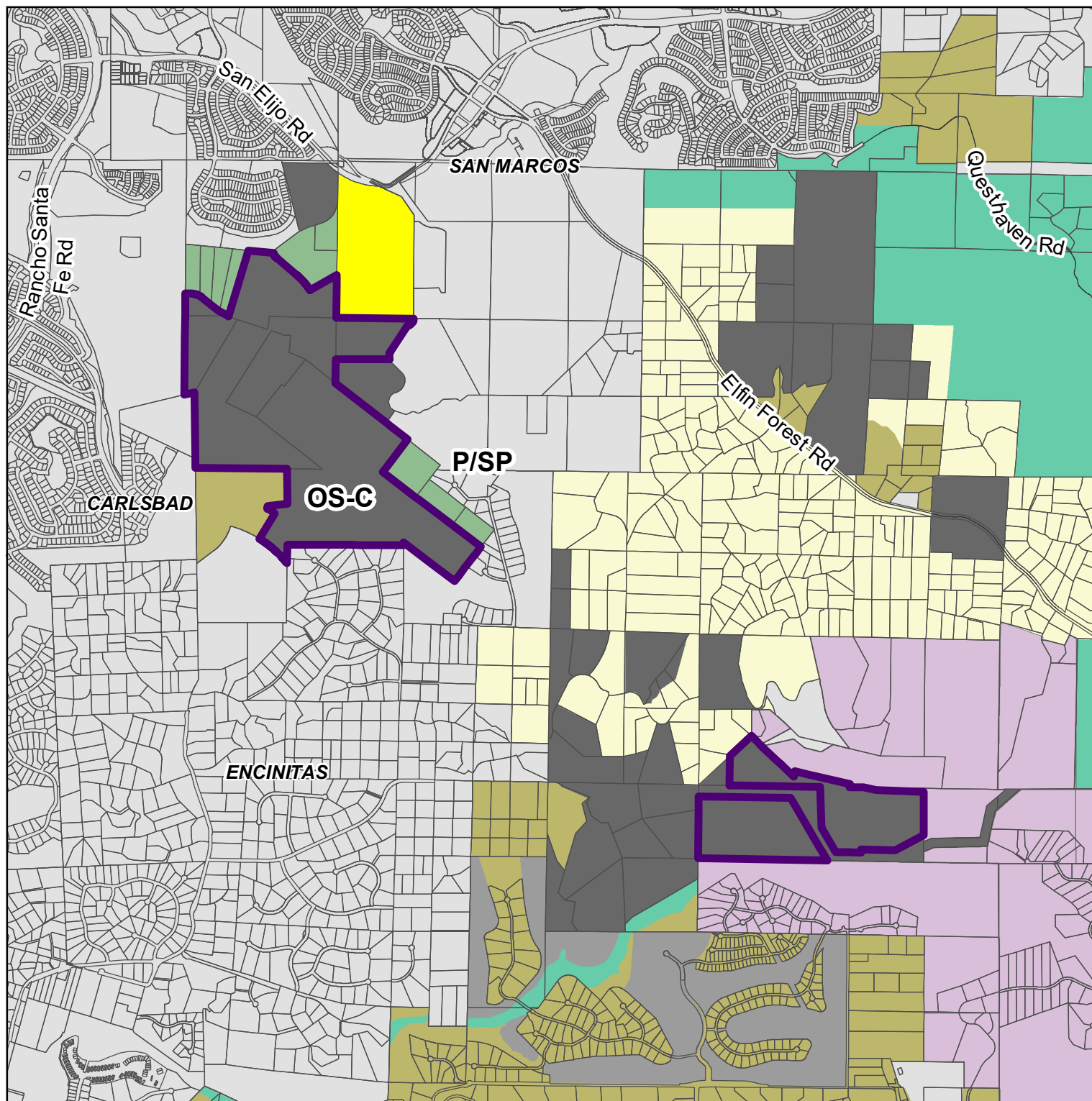


THIS MAP/DATA IS PROVIDED WITHOUT WARRANTY OF ANY KIND, EITHER EXPRESS OR IMPLIED, INCLUDING BUT NOT LIMITED TO, THE IMPLIED WARRANTIES OF MERCHANTABILITY AND FITNESS FOR A PARTICULAR PURPOSE. Note: This product may contain information from the SANDAG Regional Information System which cannot be reproduced without the written permission of SANDAG. This product may contain information reproduced with permission granted by Rand McNally & Company® to SanGIS. This map is copyrighted by Rand McNally & Company®. It is unlawful to copy or reproduce all or any part thereof, whether for personal use or resale, without the prior, written permission of Rand McNally & Company®.  
Copyright SanGIS 2015. All Rights Reserved. Full text of this legal notice can be found at: [http://www.sangis.org/legal\\_notice.htm](http://www.sangis.org/legal_notice.htm)

**LUeGIS**  
Land Use & Environment Group  
Geographic Information Services

# 2019 General Plan Clean-Up GPA SD402

Proposed General Plan Change  
Parcel Number(s): Total Parcels: 8  
2230701900



THIS MAP/DATA IS PROVIDED WITHOUT WARRANTY OF ANY KIND, EITHER EXPRESS OR IMPLIED, INCLUDING BUT NOT LIMITED TO, THE IMPLIED WARRANTIES OF MERCHANTABILITY AND FITNESS FOR A PARTICULAR PURPOSE. Note: This product may contain information reproduced with permission from SANDAG. This product may contain information reproduced with permission granted by Rand McNally & Company® to SanGIS. This map is copyrighted by Rand McNally & Company®. It is unlawful to copy or reproduce all or any part thereof, whether for personal use or resale, without the prior, written permission of Rand McNally & Company®.

Copyright SanGIS 2015. All Rights Reserved. Full text of this legal notice can be found at: [http://www.sangis.org/legal\\_notice.htm](http://www.sangis.org/legal_notice.htm)

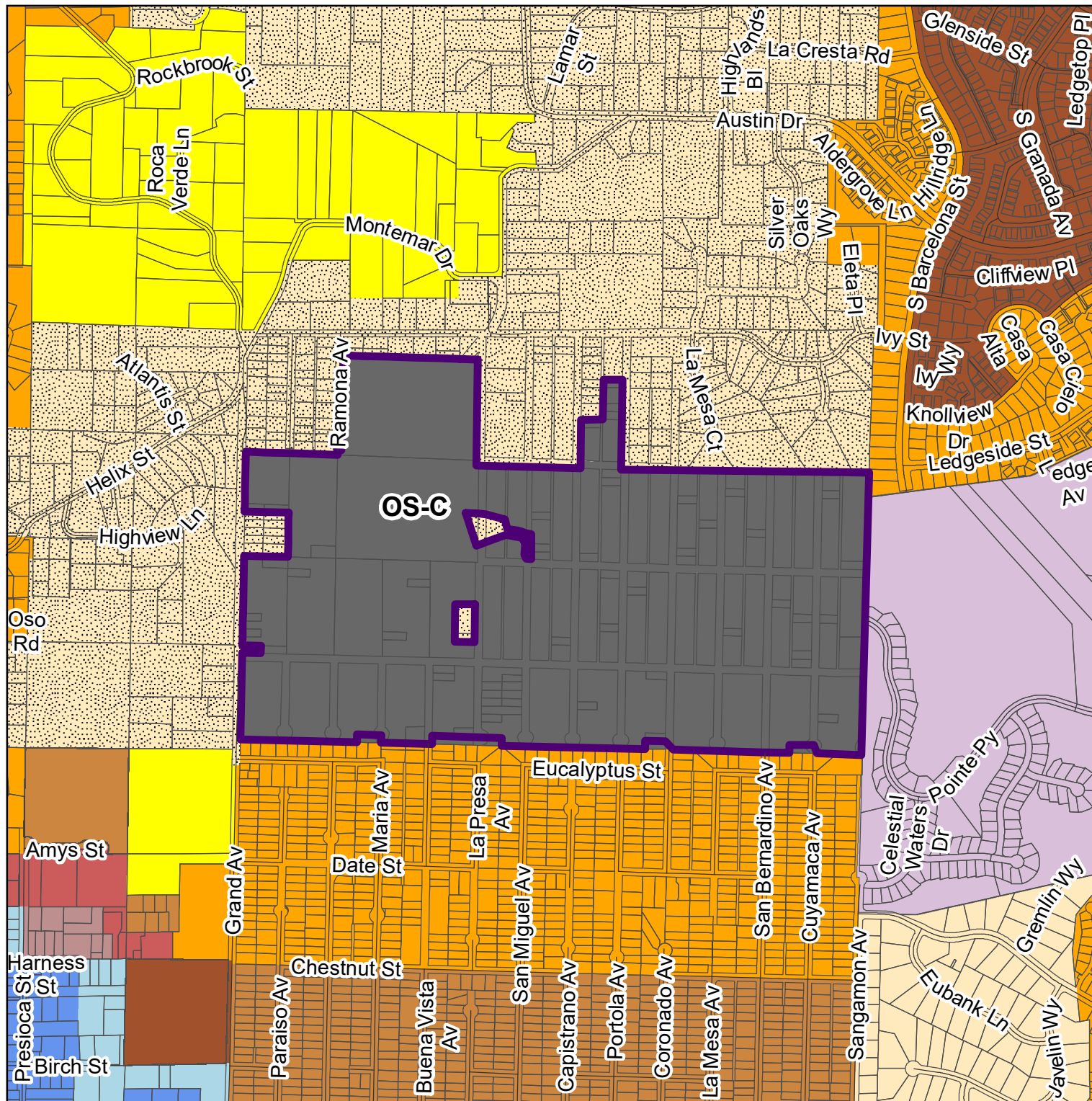
**LUeGIS**  
Land Use & Environment Group  
Geographic Information Services



# 2019 General Plan Clean-Up GPA SV402

Proposed General Plan Change

Parcel Number(s): 579013110 Total Parcels: 93



**Proposed Change Areas**

**Parcels**

**General Plan Land Use Designation**

- Village Residential (VR-24)
- Village Residential (VR-15)
- Village Residential (VR-10.9)
- Village Residential (VR-7.3)
- Village Residential (VR-4.3)
- Village Residential (VR-2)
- Semi-Rural Residential (SR-5)
- Semi-Rural Residential (SR-1)
- Specific Plan Area
- Limited Impact Industrial
- Medium Impact Industrial
- Open Space (Recreation)
- Open Space (Conservation)

THIS MAP/DATA IS PROVIDED WITHOUT WARRANTY OF ANY KIND, EITHER EXPRESS OR IMPLIED, INCLUDING BUT NOT LIMITED TO, THE IMPLIED WARRANTIES OF MERCHANTABILITY AND FITNESS FOR A PARTICULAR PURPOSE. Note: This product may contain information reproduced with permission of SANDAG. This product may contain information reproduced with permission granted by Rand McNally & Company® to SanGIS. This map is copyrighted by Rand McNally & Company®. It is unlawful to copy or reproduce all or any part thereof, whether for personal use or resale, without the prior, written permission of Rand McNally & Company®. Copyright SanGIS 2015. All Rights Reserved. Full text of this legal notice can be found at: [http://www.sangis.org/legal\\_notice.htm](http://www.sangis.org/legal_notice.htm)




# 2019 General Plan Clean-Up GPA VC401


Proposed General Plan Change

Parcel Number(s): Total Parcels: 2


1890801100


1890801000


 Proposed Change Areas


 Parcels


**General Plan Land Use Designation**


 Semi-Rural Residential (SR-2)

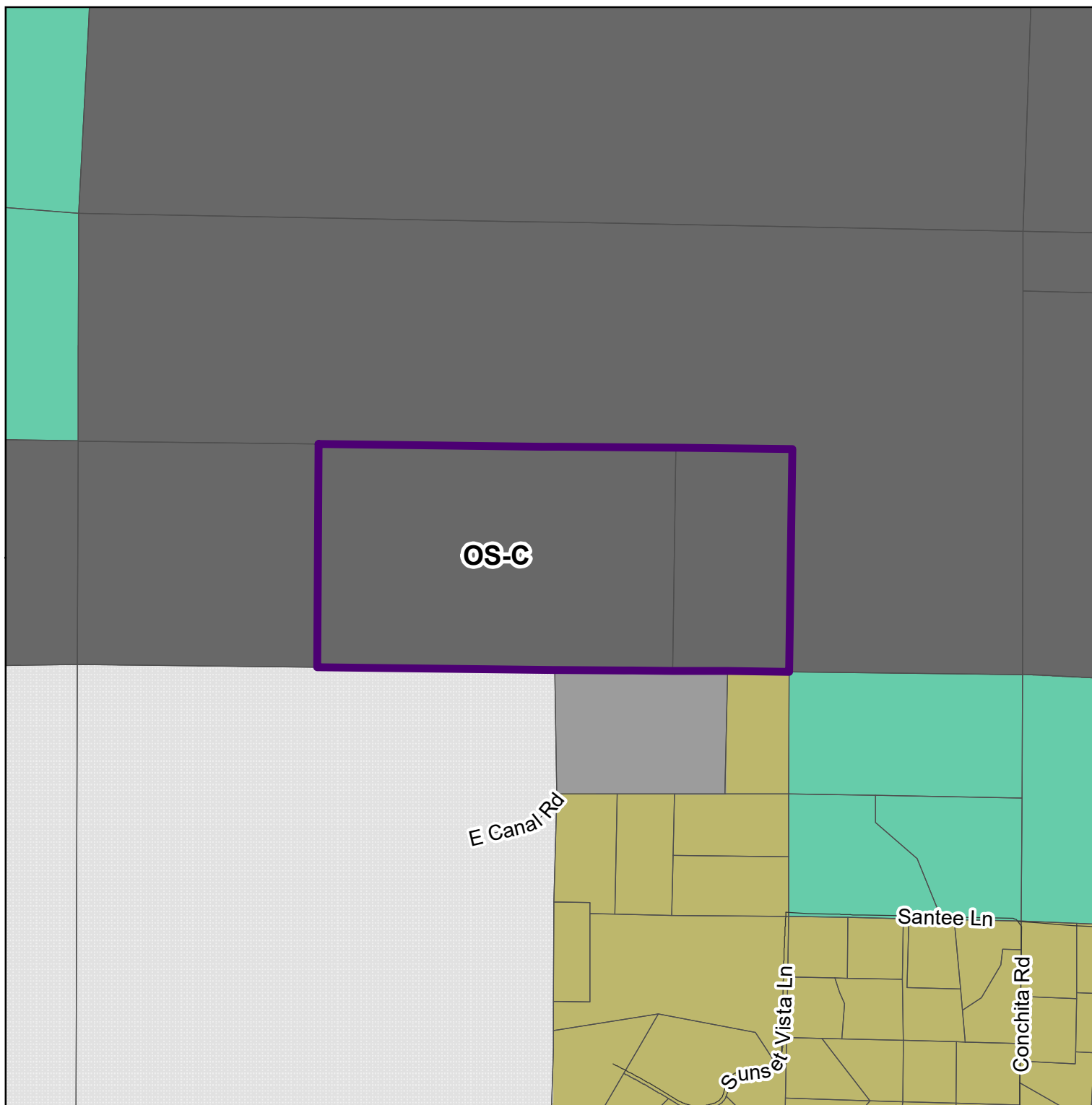
 Rural Lands (RL-20)

 Rural Lands (RL-40)

 Tribal Lands

 Open Space (Recreation)

 Open Space (Conservation)



THIS MAP/DATA IS PROVIDED WITHOUT WARRANTY OF ANY KIND, EITHER EXPRESS OR IMPLIED, INCLUDING BUT NOT LIMITED TO, THE IMPLIED WARRANTIES OF MERCHANTABILITY AND FITNESS FOR A PARTICULAR PURPOSE. Note: This product may contain information from the SANDAG Regional Information System which cannot be reproduced without the written permission of SANDAG. This product may contain information reproduced with permission granted by Rand McNally & Company® to SanGIS. This map is copyrighted by Rand McNally & Company®. It is unlawful to copy or reproduce all or any part thereof, whether for personal use or resale, without the prior, written permission of Rand McNally & Company®.

Copyright SanGIS 2015 - All Rights Reserved. Full text of this legal notice can be found at: [http://www.sangis.org/legal\\_notice.htm](http://www.sangis.org/legal_notice.htm)

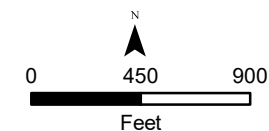
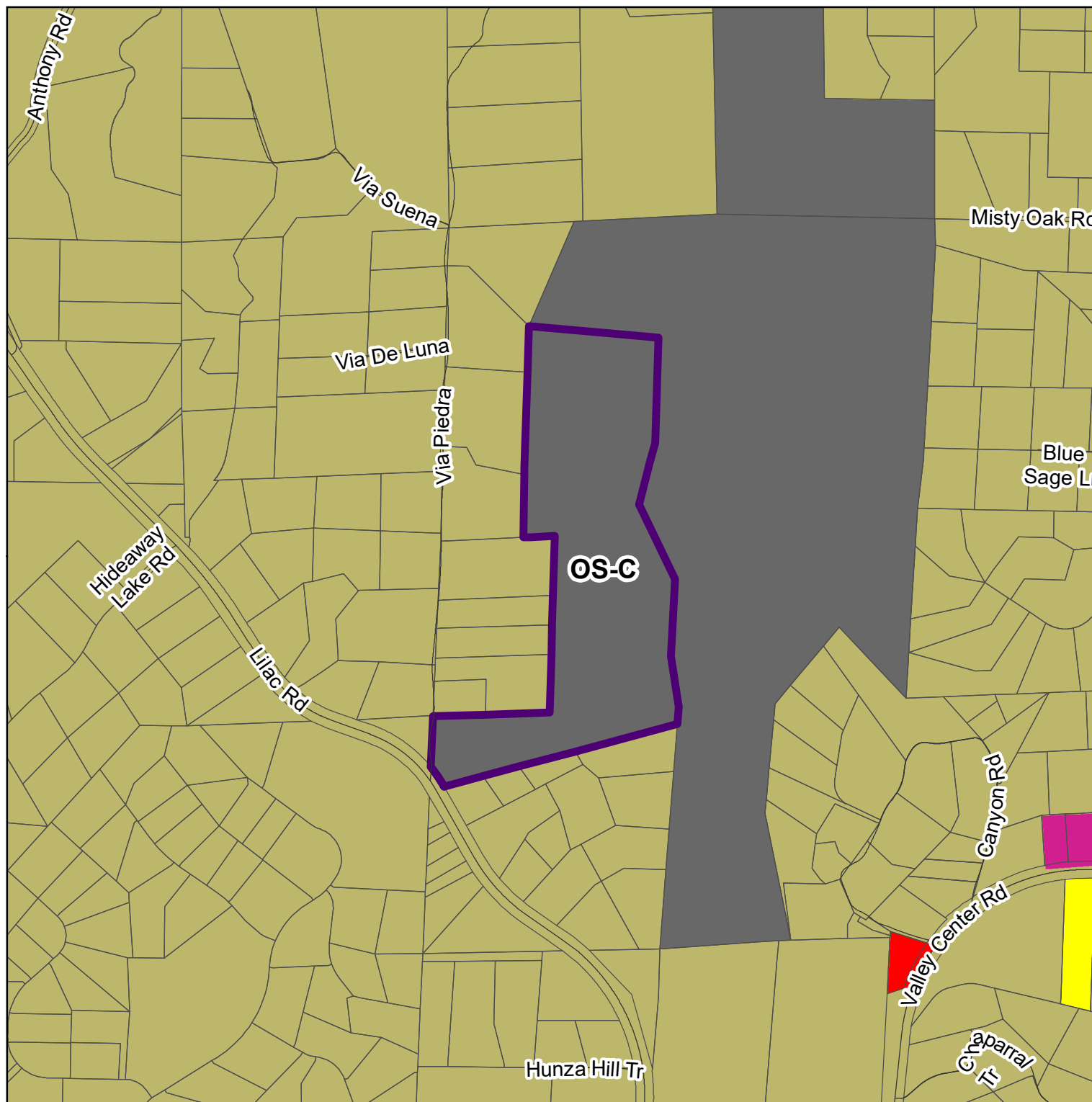
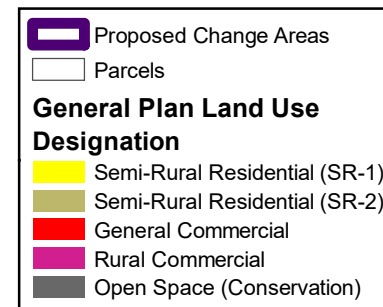
**LUeGIS**  
Land Use & Environment Group  
Geographic Information Services



# 2019 General Plan Clean-Up GPA VC402

Proposed General Plan Change

Parcel Number(s): Total Parcels: 1  
1852013300



THIS MAP/DATA IS PROVIDED WITHOUT WARRANTY OF ANY KIND, EITHER EXPRESS OR IMPLIED, INCLUDING BUT NOT LIMITED TO, THE IMPLIED WARRANTIES OF MERCHANTABILITY AND FITNESS FOR A PARTICULAR PURPOSE. Note: This product may contain information reproduced with permission granted by Rand McNally & Company® to SanGIS. This map is copyrighted by Rand McNally & Company®. It is unlawful to copy or reproduce all or any part thereof, whether for personal use or resale, without the prior, written permission of Rand McNally & Company®. Copyright SanGIS 2015. All Rights Reserved. Full text of this legal notice can be found at: [http://www.sangis.org/legal\\_notice.htm](http://www.sangis.org/legal_notice.htm)

**LUeGIS**  
 Land Use & Environment Group  
 Geographic Information Services

# 2019 General Plan Clean-Up GPA VC404

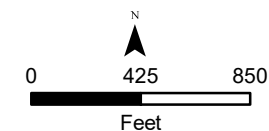
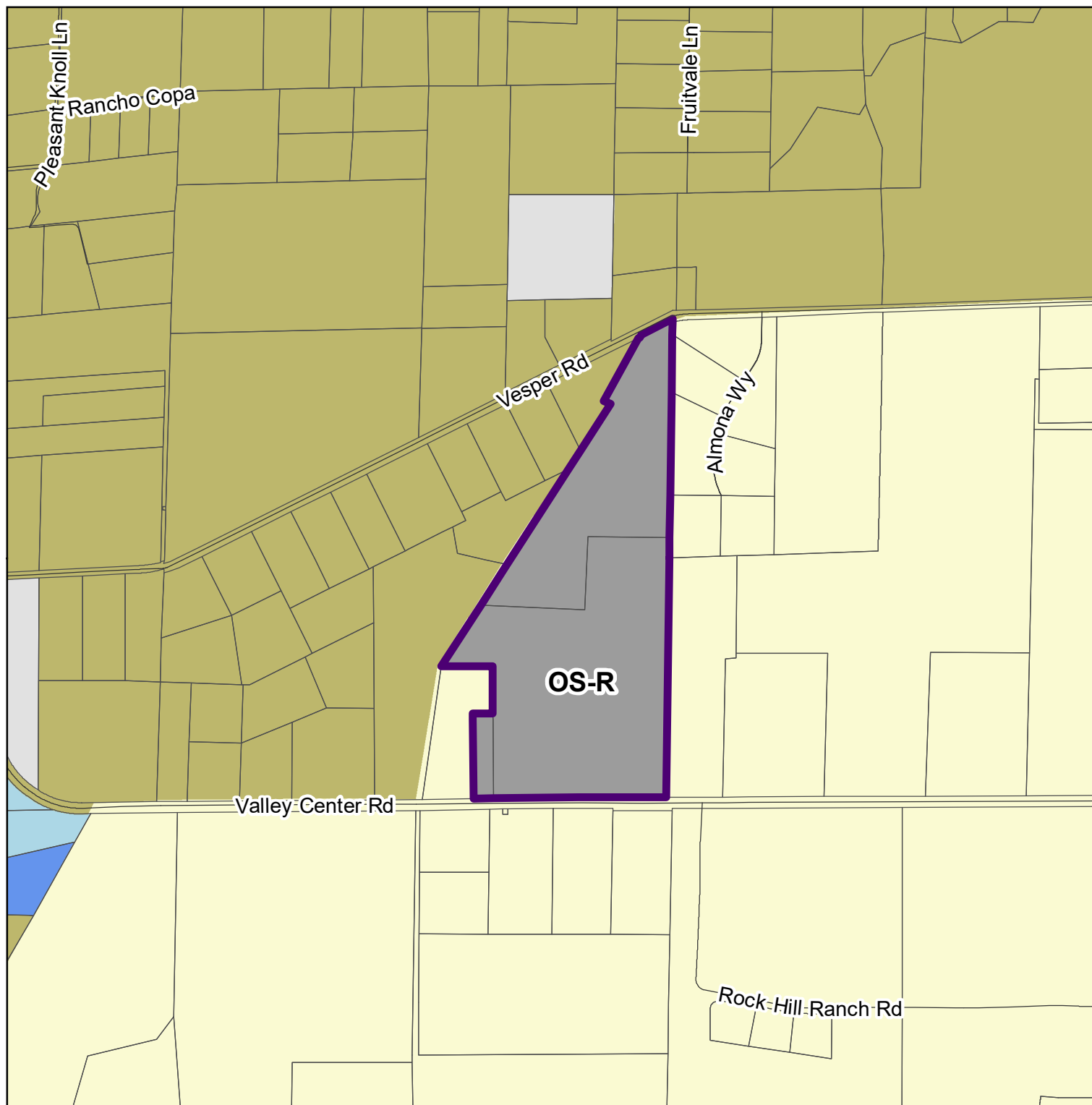
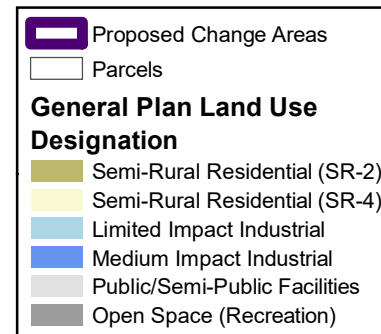
Proposed General Plan Change

Parcel Number(s): Total Parcels: 3

1882907000

1882901400

1882907100



THIS MAP/DATA IS PROVIDED WITHOUT WARRANTY OF ANY KIND, EITHER EXPRESS OR IMPLIED, INCLUDING BUT NOT LIMITED TO, THE IMPLIED WARRANTIES OF MERCHANTABILITY AND FITNESS FOR A PARTICULAR PURPOSE. Note: This product may contain information reproduced with permission of SANDAG. This product may contain information reproduced with permission granted by Rand McNally & Company® to SanGIS. This map is copyrighted by Rand McNally & Company®. It is unlawful to copy or reproduce all or any part thereof, whether for personal use or resale, without the prior, written permission of Rand McNally & Company®.

Copyright SanGIS 2015 - All Rights Reserved. Full text of this legal notice can be found at: [http://www.sangis.org/legal\\_notice.htm](http://www.sangis.org/legal_notice.htm)


**LUeGIS**  
Land Use & Environment Group  
Geographic Information Services


# 2019 General Plan Clean-Up GPA JD401

Proposed Regional Category Change


Parcel Number(s): Total Parcels: 5


5960405800  
5960406200  
5960406600  
5960406800  
5960400700


 Proposed Change Areas


 Parcels

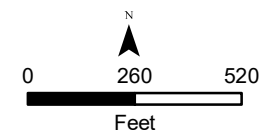
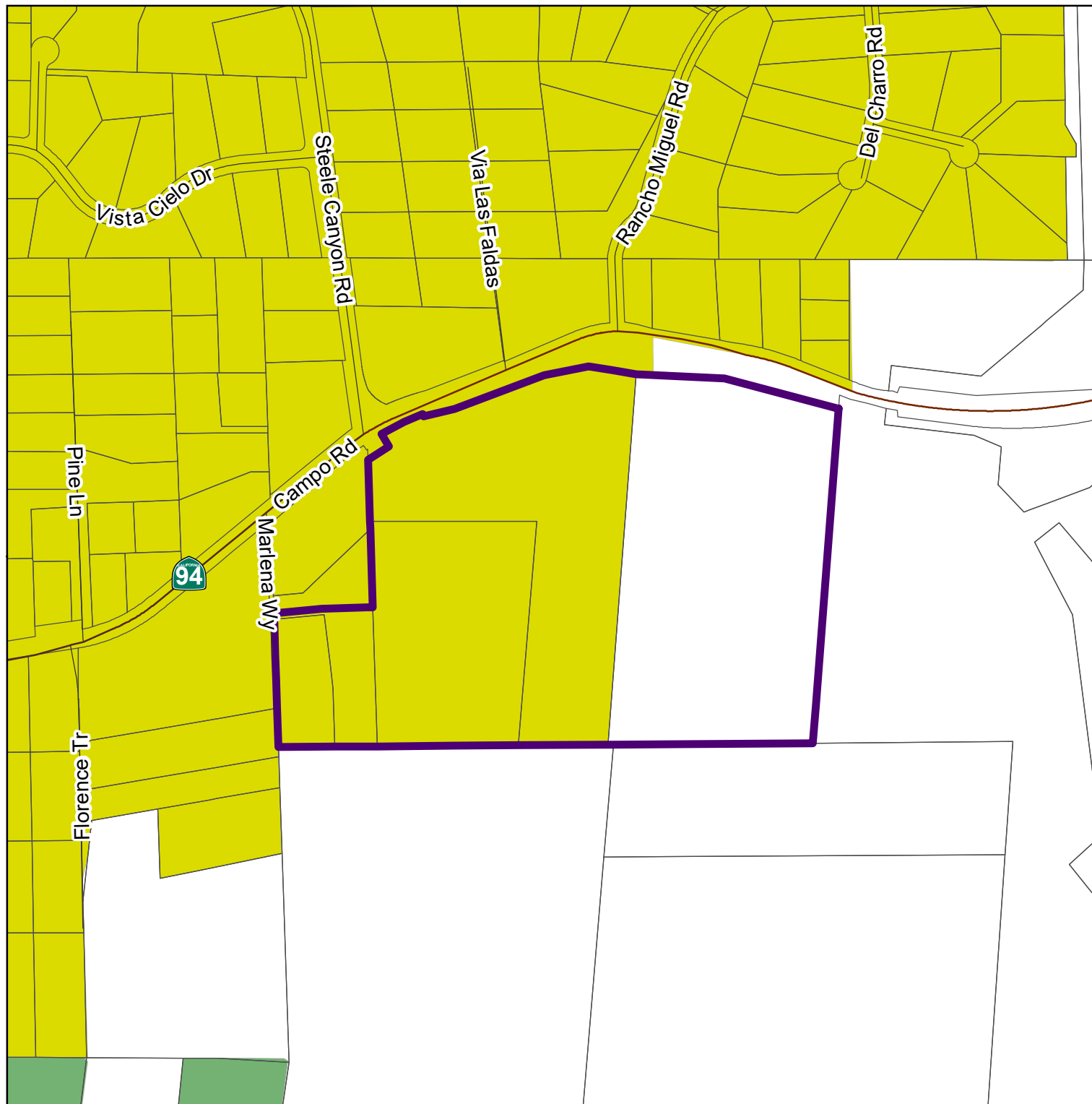
### Regional Categories

 Village

 Semi-Rural

 Rural

 No Jurisdiction

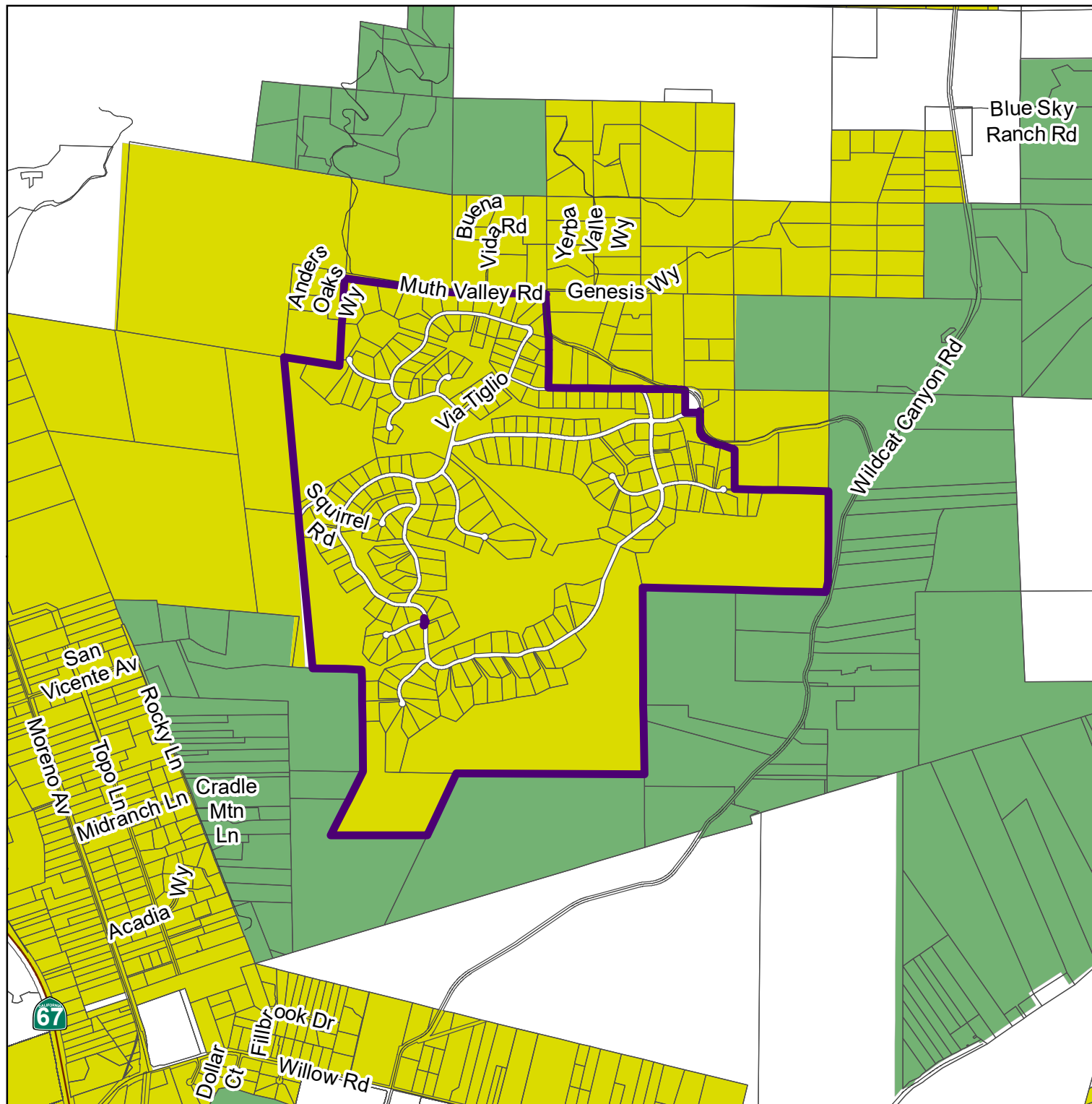


THIS MAP/DATA IS PROVIDED WITHOUT WARRANTY OF ANY KIND, EITHER EXPRESS OR IMPLIED, INCLUDING BUT NOT LIMITED TO, THE IMPLIED WARRANTIES OF MERCHANTABILITY AND FITNESS FOR A PARTICULAR PURPOSE. Note: This product may contain information reproduced with permission of SANDAG. This product may contain information reproduced with permission granted by Rand McNally & Company® to SanGIS. This map is copyrighted by Rand McNally & Company®. It is unlawful to copy or reproduce all or any part thereof, whether for personal use or resale, without the prior, written permission of Rand McNally & Company®.  
Copyright SanGIS 2015. All Rights Reserved. Full text of this legal notice can be found at: [http://www.sangis.org/legal\\_notice.htm](http://www.sangis.org/legal_notice.htm)

**LUEGGIS**  
Land Use & Environment Group  
Geographic Information Services

# 2019 General Plan Clean-Up GPA LS407

Proposed Regional Category Change  
Parcel Number(s): Total Parcels: 531  
389061450



Proposed Change Areas

Parcels

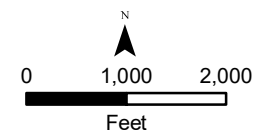
**Regional Categories**

Village

Semi-Rural

Rural

No Jurisdiction

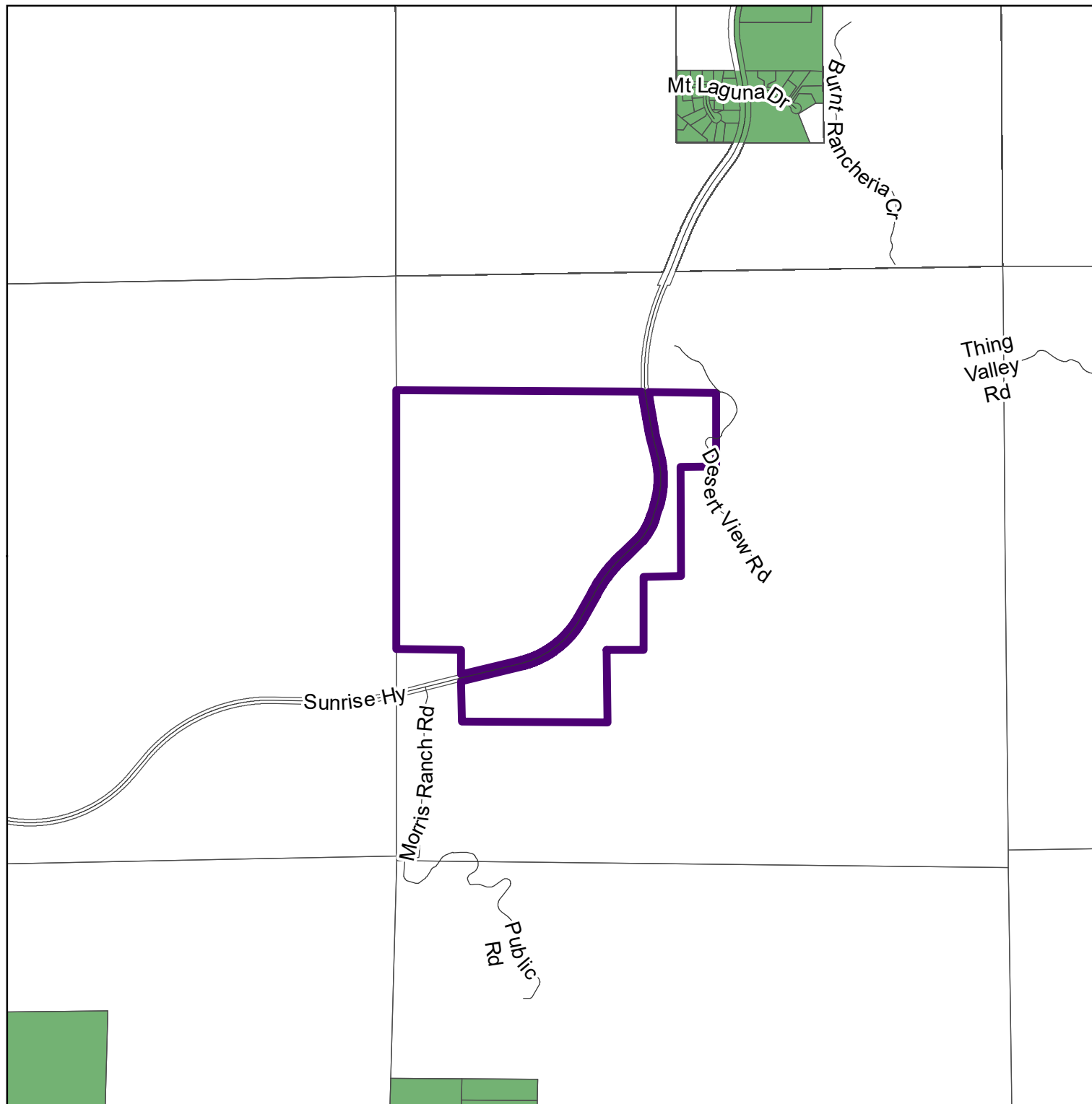


THIS MAP/DATA IS PROVIDED WITHOUT WARRANTY OF ANY KIND, EITHER EXPRESS OR IMPLIED, INCLUDING BUT NOT LIMITED TO, THE IMPLIED WARRANTIES OF MERCHANTABILITY AND FITNESS FOR A PARTICULAR PURPOSE. Note: This product may contain information reproduced with permission of SANDAG. This product may contain information reproduced with permission granted by Rand McNally & Company® to SanGIS. This map is copyrighted by Rand McNally & Company®. It is unlawful to copy or reproduce all or any part thereof, whether for personal use or resale, without the prior, written permission of Rand McNally & Company®. Copyright SanGIS 2015. All Rights Reserved. Full text of this legal notice can be found at: [http://www.sangis.org/legal\\_notice.htm](http://www.sangis.org/legal_notice.htm)

**LUeGIS**  
Land Use & Environment Group  
Geographic Information Services

# 2019 General Plan Clean-Up GPA PV401

Proposed Regional Category Change  
Parcel Number(s): Total Parcels: 1  
4120400200



**Proposed Change Areas**

Proposed Change Areas

Parcels

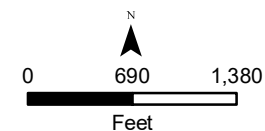
**Regional Categories**

Village

Semi-Rural

Rural

No Jurisdiction



THIS MAP/DATA IS PROVIDED WITHOUT WARRANTY OF ANY KIND, EITHER EXPRESS OR IMPLIED, INCLUDING BUT NOT LIMITED TO, THE IMPLIED WARRANTIES OF MERCHANTABILITY AND FITNESS FOR A PARTICULAR PURPOSE. Note: This product may contain information reproduced with permission of SANDAG. This product may contain information reproduced with permission granted by Rand McNally & Company® to SanGIS. This map is copyrighted by Rand McNally & Company®. It is unlawful to copy or reproduce all or any part thereof, whether for personal use or resale, without the prior, written permission of Rand McNally & Company®.

Copyright SanGIS 2015. All Rights Reserved. Full text of this legal notice can be found at: [http://www.sangis.org/legal\\_notice.htm](http://www.sangis.org/legal_notice.htm)

**LUeGIS**  
Land Use & Environment Group  
Geographic Information Services

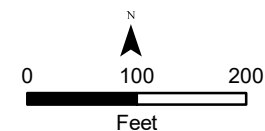
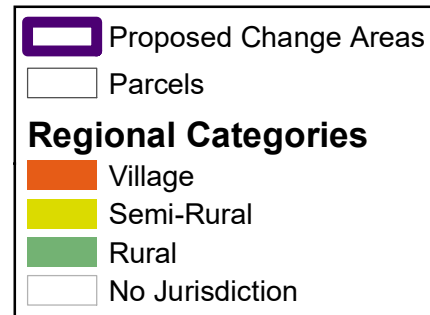
2019 General Plan  
Clean-Up GPA  
SD401

Proposed Regional Category Change

Parcel Number(s): Total Parcels: 1  
2230810600

**SAN MARCOS**

**ENCINITAS**



THIS MAP/DATA IS PROVIDED WITHOUT WARRANTY OF ANY KIND, EITHER EXPRESS OR IMPLIED, INCLUDING BUT NOT LIMITED TO, THE IMPLIED WARRANTIES OF MERCHANTABILITY AND FITNESS FOR A PARTICULAR PURPOSE. Note: This product may contain information reproduced with permission of SANDAG. This product may contain information reproduced with permission granted by Rand McNally & Company® to SanGIS. This map is copyrighted by Rand McNally & Company®. It is unlawful to copy or reproduce all or any part thereof, whether for personal use or resale, without the prior, written permission of Rand McNally & Company®.

Copyright SanGIS 2015 - All Rights Reserved. Full text of this legal notice can be found at: [http://www.sangis.org/legal\\_notice.htm](http://www.sangis.org/legal_notice.htm)

**LUeGIS**  
Land Use & Environment Group  
Geographic Information Services





# 2019 General Plan Clean-Up GPA SD402

Proposed Regional Category Change


Parcel Number(s): Total Parcels: 8


2230701900  
2230702900  
2230720300  
2230815100  
2230720200  
2230810900  
2230720100  
2641111200


 Proposed Change Areas


 Parcels

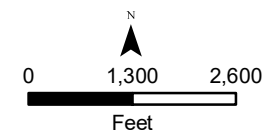
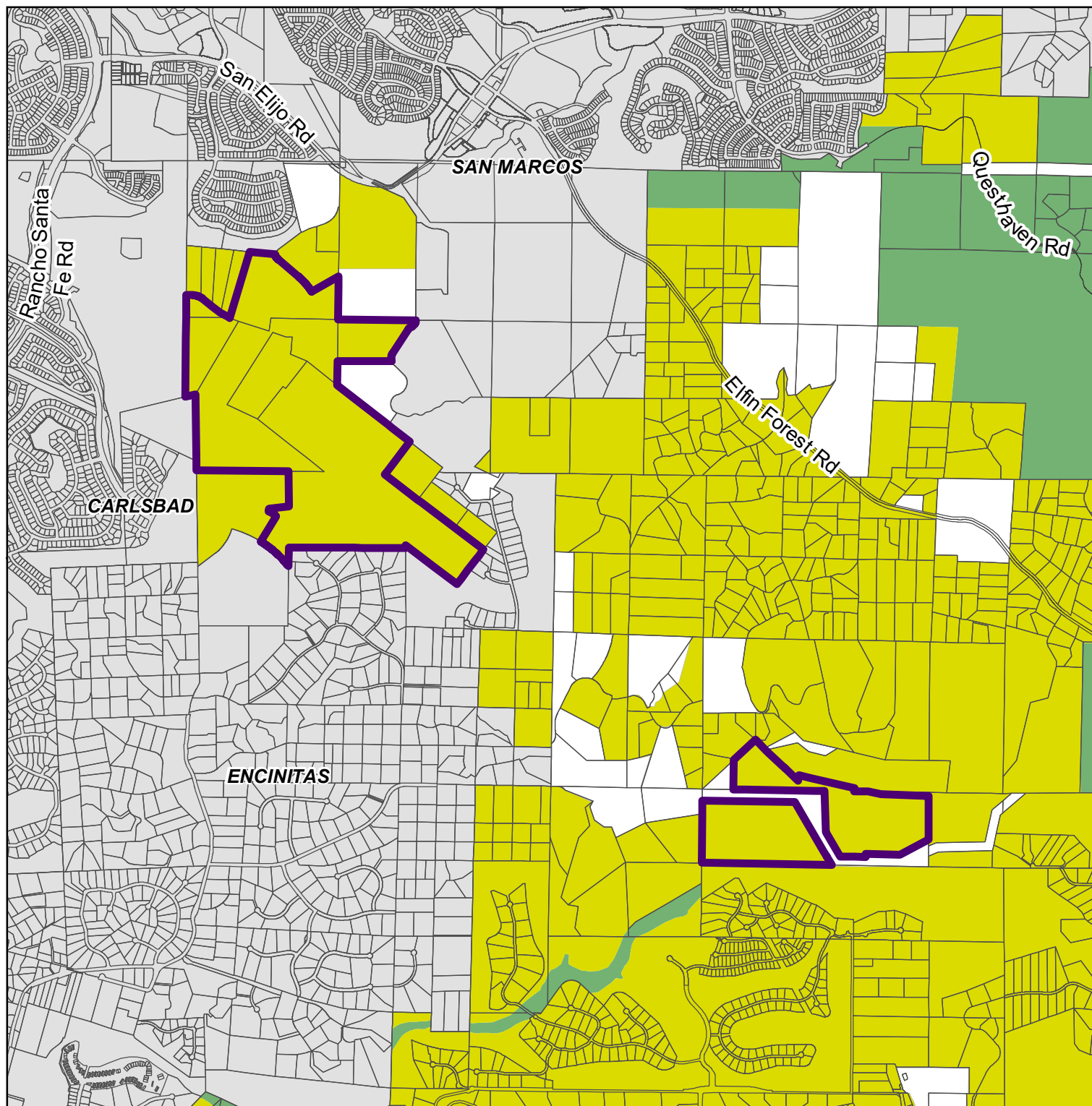
### Regional Categories

 Village

 Semi-Rural

 Rural

 No Jurisdiction



THIS MAP/DATA IS PROVIDED WITHOUT WARRANTY OF ANY KIND, EITHER EXPRESS OR IMPLIED, INCLUDING BUT NOT LIMITED TO, THE IMPLIED WARRANTIES OF MERCHANTABILITY AND FITNESS FOR A PARTICULAR PURPOSE. Note: This product may contain information reproduced with permission granted by Rand McNally & Company® to SanGIS. This map is copyrighted by Rand McNally & Company®. It is unlawful to copy or reproduce all or any part thereof, whether for personal use or resale, without the prior, written permission of Rand McNally & Company®.  
Copyright SanGIS 2015 - All Rights Reserved. Full text of this legal notice can be found at: [http://www.sangis.org/legal\\_notice.htm](http://www.sangis.org/legal_notice.htm)

**LUeGIS**  
Land Use & Environment Group  
Geographic Information Services