

**Attachment B – AN ORDINANCE CHANGING THE
ZONING CLASSIFICATION OF CERTAIN
PROPERTY WITHIN THE COUNTY OF SAN DIEGO
RELATED TO THE 2019 GENERAL PLAN CLEAN-
UP GENERAL PLAN AMENDMENT AND REZONE
[GPA 18-006; REZ 19-003]**

Form of Ordinance Zoning Classification

AN ORDINANCE CHANGING THE ZONING CLASSIFICATION
OF CERTAIN PROPERTY WITHIN THE COUNTY OF SAN
DIEGO RELATED TO THE 2019 GENERAL PLAN CLEAN-UP
GENERAL PLAN AMENDMENT AND REZONE
[GPA 18-006; REZ 19-003]

*Maps showing proposed changes to the
Zoning Ordinance are located at the link below:*

<https://www.sandiegocounty.gov/content/sdc/pds/advance/2019gpclean-up.html>

ORDINANCE NO. _____ (NEW SERIES)

**AN ORDINANCE CHANGING THE ZONING CLASSIFICATION OF CERTAIN PROPERTY
WITHIN THE COUNTY OF SAN DIEGO RELATED TO THE 2019 GENERAL PLAN CLEAN-
UP GENERAL PLAN AMENDMENT AND REZONE [GPA 19-003; REZ 16-001]**

The Board of Supervisors of the County of San Diego ordains as follows:

Alpine

Section 1. The zoning classification of certain real property is hereby changed as set forth herein, and more precisely delineated on the Alpine Zoning Use Regulation Changes Map identified as Map AL-UR-401 from the December 11, 2019, Board of Supervisors Meeting, all documents on file with the Clerk of the Board of Supervisors of the County of San Diego.

Use Regulation Changes

Sub-Area No.	Old	New
AL-UR-401	A70	S80

Section 2. The zoning classification of certain real property is hereby changed as set forth herein, and more precisely delineated on the Alpine Zoning Use Regulation Changes Map identified as Map AL-UR-402 from the December 11, 2019, Board of Supervisors Meeting, all documents on file with the Clerk of the Board of Supervisors of the County of San Diego.

Use Regulation Changes

Sub-Area No.	Old	New
AL-UR-402	A70	S80

Bonsall

Section 3. The zoning classification of certain real property is hereby changed as set forth herein, and more precisely delineated on the Bonsall Zoning Use Regulation Changes Map identified as Map BS-UR-401 from the December 11, 2019, Board of Supervisors Meeting, all documents on file with the Clerk of the Board of Supervisors of the County of San Diego.

Use Regulation Changes

Sub-Area No.	Old	New
BO-UR-401	A70, RR, C36	S80

Crest-Dehesa

Section 4. The zoning classification of certain real property is hereby changed as set forth herein, and more precisely delineated on the Crest-Dehesa Zoning Use Regulation Changes Map identified as Map CD-UR-401 from the December 11, 2019, Board of Supervisors Meeting, all

documents on file with the Clerk of the Board of Supervisors of the County of San Diego.

Use Regulation Changes

Sub-Area No.	Old	New
CD-UR-401	A70, A72, RR, S92	S80

Hidden Meadows

Section 5. The zoning classification of certain real property is hereby changed as set forth herein, and more precisely delineated on the Hidden Meadows Zoning Use Regulation Changes Map identified as Map HM-UR-401 from the December 11, 2019, Board of Supervisors Meeting, all documents on file with the Clerk of the Board of Supervisors of the County of San Diego.

Use Regulation Changes

Sub-Area No.	Old	New
HM-UR-401	A70, S88	S80

Jamul-Dulzura

Section 6. The zoning classification of certain real property is hereby changed as set forth herein, and more precisely delineated on the Jamul-Dulzura Zoning Use Regulation Changes Map identified as Map JD-UR-401 from the December 11, 2019, Board of Supervisors Meeting, all documents on file with the Clerk of the Board of Supervisors of the County of San Diego.

Use Regulation Changes

Sub-Area No.	Old	New
JD-UR-401	RR, A72	RR

Section 7. The zoning classification of certain real property is hereby changed as set forth herein, and more precisely delineated on the Jamul-Dulzura Lot Size Map identified as Map JD-UR-401 from the December 11, 2019, Board of Supervisors Meeting, all documents on file with the Clerk of the Board of Supervisors of the County of San Diego.

Lot Size Changes

Sub-Area No.	Old	New
JD-LS-401	4AC	1AC

Section 8. The zoning classification of certain real property is hereby changed as set forth herein, and more precisely delineated on the Jamul-Dulzura Setback Map identified as Map JD-SB-401 from the December 11, 2019, Board of Supervisors Meeting, all documents on file with the Clerk of the Board of Supervisors of the County of San Diego.

Setback Changes

Sub-Area No.	Old	New
JD-SB-401	C	B

Section 9. The zoning classification of certain real property is hereby changed as set forth herein, and more precisely delineated on the Jamul-Dulzura Zoning Use Regulation Changes Map identified as Map JD-UR-402 from the December 11, 2019, Board of Supervisors Meeting, all documents on file with the Clerk of the Board of Supervisors of the County of San Diego.

Use Regulation Changes

Sub-Area No.	Old	New
JD-UR-402	A72	S80

Lakeside

Section 10. The zoning classification of certain real property is hereby changed as set forth herein, and more precisely delineated on the Lakeside Zoning Use Regulation Changes Map identified as Map LS-UR-401 from the December 11, 2019, Board of Supervisors Meeting, all documents on file with the Clerk of the Board of Supervisors of the County of San Diego.

Use Regulations Changes

Sub-Area No.	Old	New
LS-UR-401	A70	S80

Section 11. The zoning classification of certain real property is hereby changed as set forth herein, and more precisely delineated on the Lakeside Zoning Use Regulation Changes Map identified as Map LS-UR-403 from the December 11, 2019, Board of Supervisors Meeting, all documents on file with the Clerk of the Board of Supervisors of the County of San Diego.

Use Regulation Changes

Sub-Area No.	Old	New
LS-UR-403	RR, RS	S80

Section 12. The zoning classification of certain real property is hereby changed as set forth herein, and more precisely delineated on the Lakeside Zoning Use Regulation Changes Map identified as Map LS-UR-404 from the December 11, 2019, Board of Supervisors Meeting, all documents on file with the Clerk of the Board of Supervisors of the County of San Diego.

Use Regulation Changes

Sub-Area No.	Old	New
LS-UR-404	RS	C34

Section 13. The zoning classification of certain real property is hereby changed as set forth herein, and more precisely delineated on the Lakeside Density Changes Map identified as Map LS-DN-404 from the December 11, 2019, Board of Supervisors Meeting, all documents on file with the Clerk of the Board of Supervisors of the County of San Diego.

Density Changes

Sub-Area No.	Old	New
LS-DN-404	None	29

Section 14. The zoning classification of certain real property is hereby changed as set forth herein, and more precisely delineated on the Lakeside Building Type Changes Map identified as Map LS-BT-404 from the December 11, 2019, Board of Supervisors Meeting, all documents on file with the Clerk of the Board of Supervisors of the County of San Diego.

Building Type Changes

Sub-Area No.	Old	New
LS-BT-404	C	T

Section 15. The zoning classification of certain real property is hereby changed as set forth herein, and more precisely delineated on the Lakeside Height Changes Map identified as Map LS-HC-404 from the December 11, 2019, Board of Supervisors Meeting, all documents on file with the Clerk of the Board of Supervisors of the County of San Diego.

Height Changes

Sub-Area No.	Old	New
LS-HC-404	G	H

Section 16. The zoning classification of certain real property is hereby changed as set forth herein, and more precisely delineated on the Lakeside Setback Changes Map identified as Map LS-SB-404 from the December 11, 2019, Board of Supervisors Meeting, all documents on file with the Clerk of the Board of Supervisors of the County of San Diego.

Setback Changes

Sub-Area No.	Old	New
LS-SB-404	J	O

Section 17. The zoning classification of certain real property is hereby changed as set forth herein, and more precisely delineated on the Lakeside Open Space Changes Map identified as Map LS-OS-404 from the December 11, 2019, Board of Supervisors Meeting, all documents on file with the Clerk of the Board of Supervisors of the County of San Diego.

Open Space Changes

Sub-Area No.	Old	New
LS-OS-404	None	B

Section 18. The zoning classification of certain real property is hereby changed as set forth herein, and more precisely delineated on the Lakeside Special Area Designator Changes Map identified as Map LS-SA-404 from the December 11, 2019, Board of Supervisors Meeting, all documents on file with the Clerk of the Board of Supervisors of the County of San Diego.

Special Area Designator Changes

Sub-Area No.	Old	New
LS-SA-404	None	B, C, P

Section 19. The zoning classification of certain real property is hereby changed as set forth herein, and more precisely delineated on the Lakeside Building Type Changes Map identified as Map LS-BT-405 from the December 11, 2019, Board of Supervisors Meeting, all documents on file with the Clerk of the Board of Supervisors of the County of San Diego.

Building Type Changes

Sub-Area No.	Old	New
LS-BT-405	C	K

Section 20. The zoning classification of certain real property is hereby changed as set forth herein, and more precisely delineated on the Lakeside Special Area Designator Changes Map identified as Map LS-SA-405 from the December 11, 2019, Board of Supervisors Meeting, all documents on file with the Clerk of the Board of Supervisors of the County of San Diego.

Special Area Designator Changes

Sub-Area No.	Old	New
LS-SA-405	None	C

Section 21. The zoning classification of certain real property is hereby changed as set forth herein, and more precisely delineated on the Lakeside Zoning Use Regulation Changes Map identified as Map LS-UR-406 from the December 11, 2019, Board of Supervisors Meeting, all documents on file with the Clerk of the Board of Supervisors of the County of San Diego.

Use Regulation Changes

Sub-Area No.	Old	New
LS-UR-406	RR, RS	S80

Section 22. The zoning classification of certain real property is hereby changed as set forth herein, and more precisely delineated on the Lakeside Density Changes Map identified as Map LS-DN-406 from the December 11, 2019, Board of Supervisors Meeting, all documents on file with the Clerk of the Board of Supervisors of the County of San Diego.

Density Changes

Sub-Area No.	Old	New
---------------------	------------	------------

LS-DN-406 0.125 Remove

North County Metro

Section 23. The zoning classification of certain real property is hereby changed as set forth herein, and more precisely delineated on the North County Metro Lot Size Changes Map identified as Map NCM-LS-401 from the December 11, 2019, Board of Supervisors Meeting, all documents on file with the Clerk of the Board of Supervisors of the County of San Diego.

Lot Size Changes

Sub-Area No.	Old	New
NCM-LS-401	15,000 sf	10,000 sf

Section 24. The zoning classification of certain real property is hereby changed as set forth herein, and more precisely delineated on the North County Metro Zoning Use Regulation Changes Map identified as Map NCM-UR-402 from the December 11, 2019, Board of Supervisors Meeting, all documents on file with the Clerk of the Board of Supervisors of the County of San Diego.

Use Regulation Changes

Sub-Area No.	Old	New
NCM-UR-402	RR	RV

Section 25. The zoning classification of certain real property is hereby changed as set forth herein, and more precisely delineated on the North County Metro Lot Size Changes Map identified as Map NCM-LS-402 from the December 11, 2019, Board of Supervisors Meeting, all documents on file with the Clerk of the Board of Supervisors of the County of San Diego.

Lot Size Changes

Sub-Area No.	Old	New
NCM-LS-402	1AC	6,000 sf

Section 26. The zoning classification of certain real property is hereby changed as set forth herein, and more precisely delineated on the North County Metro Building Type Changes Map identified as Map NCM-BT-402 from the December 11, 2019, Board of Supervisors Meeting, all documents on file with the Clerk of the Board of Supervisors of the County of San Diego.

Building Type Changes

Sub-Area No.	Old	New
NCM-BT-402	C	K

Section 27. The zoning classification of certain real property is hereby changed as set forth herein, and more precisely delineated on the North County Metro Setback Changes Map identified as Map NCM-SB-402 from the December 11, 2019, Board of Supervisors Meeting, all documents on file with the Clerk of the Board of Supervisors of the County of San Diego.

Setback Changes

Sub-Area No.	Old	New
NCM-SB-402	B	K

North Mountain

Section 28. The zoning classification of certain real property is hereby changed as set forth herein, and more precisely delineated on the San Dieguito Zoning Use Regulation Changes Map identified as Map NM-UR-401 from the December 11, 2019, Board of Supervisors Meeting, all documents on file with the Clerk of the Board of Supervisors of the County of San Diego.

Use Regulation Changes

Sub-Area No.	Old	New
NM-UR-401	A72	S80

Pala Pauma

Section 29. The zoning classification of certain real property is hereby changed as set forth herein, and more precisely delineated on the Pala Pauma Zoning Use Regulation Changes Map identified as Maps PP-UR-401 from the December 11, 2019, Board of Supervisors Meeting, all documents on file with the Clerk of the Board of Supervisors of the County of San Diego.

Use Regulation Changes

Sub-Area No.	Old	New
PP-UR-401	A70	S80

Section 30. The zoning classification of certain real property is hereby changed as set forth herein, and more precisely delineated on the Pala Pauma Zoning Use Regulation Changes Map identified as Map PP-UR-402 from the December 11, 2019, Board of Supervisors Meeting, all documents on file with the Clerk of the Board of Supervisors of the County of San Diego.

Use Regulations Changes

Sub-Area No.	Old	New
PP-UR-402	S80	RS

Section 31. The zoning classification of certain real property is hereby changed as set forth herein, and more precisely delineated on the Pala Pauma Lot Size Change Map identified as Map PP-LS-402 from the December 11, 2019, Board of Supervisors Meeting, all documents on file with the Clerk of the Board of Supervisors of the County of San Diego.

Lot Size Changes

Sub-Area No.	Old	New
PP-LS-402	None	10,000

Section 32. The zoning classification of certain real property is hereby changed as set forth herein, and more precisely delineated on the Pala Pauma Building Type Changes Map identified as Maps PP-BT-402 from the December 11, 2019, Board of Supervisors Meeting, all documents on file with the Clerk of the Board of Supervisors of the County of San Diego.

Building Type Changes

Sub-Area No.	Old	New
PP-BT-402	None	C

Section 33. The zoning classification of certain real property is hereby changed as set forth herein, and more precisely delineated on the Pala Pauma Height Changes Map identified as Maps PP-HC-402 from the December 11, 2019, Board of Supervisors Meeting, all documents on file with the Clerk of the Board of Supervisors of the County of San Diego.

Height Changes

Sub-Area No.	Old	New
PP-HC-402	V	G

Section 34. The zoning classification of certain real property is hereby changed as set forth herein, and more precisely delineated on the Pala Pauma Setback Changes Map identified as Maps PP-SB-402 from the December 11, 2019, Board of Supervisors Meeting, all documents on file with the Clerk of the Board of Supervisors of the County of San Diego.

Setback Changes

Sub-Area No.	Old	New
PP-SB-402	None	H

Pine Valley

Section 35. The zoning classification of certain real property is hereby changed as set forth herein, and more precisely delineated on the Pine Valley Density Changes Map identified as Map PV-DN-401 from the December 11, 2019, Board of Supervisors Meeting, all documents on file with the Clerk of the Board of Supervisors of the County of San Diego.

Density Changes

Sub-Area No.	Old	New
PV-DN-401	0.05	Remove

Ramona

Section 36. The zoning classification of certain real property is hereby changed as set forth herein, and more precisely delineated on the San Dieguito Zoning Use Regulation Changes

Map identified as Map RM-UR-403 from the December 11, 2019, Board of Supervisors Meeting, all documents on file with the Clerk of the Board of Supervisors of the County of San Diego.

Use Regulation Changes

Sub-Area No.	Old	New
RM-UR-403	RMV1	RMV1, RMV4 (por)

San Dieguito

Section 37. The zoning classification of certain real property is hereby changed as set forth herein, and more precisely delineated on the San Dieguito Zoning Use Regulation Changes Map identified as Map SD-UR-401 from the December 11, 2019, Board of Supervisors Meeting, all documents on file with the Clerk of the Board of Supervisors of the County of San Diego.

Use Regulation Changes

Sub-Area No.	Old	New
SD-UR-401	S80	RR

Section 38. The zoning classification of certain real property is hereby changed as set forth herein, and more precisely delineated on the San Dieguito Density Changes Map identified as Maps SD-DN-401 from the December 11, 2019, Board of Supervisors Meeting, all documents on file with the Clerk of the Board of Supervisors of the County of San Diego.

Density Changes

Sub-Area No.	Old	New
SD-DN-401	0.25	Remove

Section 39. The zoning classification of certain real property is hereby changed as set forth herein, and more precisely delineated on the San Dieguito Zoning Use Regulation Changes Map identified as Map SD-UR-402 from the December 11, 2019, Board of Supervisors Meeting, all documents on file with the Clerk of the Board of Supervisors of the County of San Diego.

Use Regulation Changes

Sub-Area No.	Old	New
SD-UR-402	RR	S80

Section 40. The zoning classification of certain real property is hereby changed as set forth herein, and more precisely delineated on the San Dieguito Density Changes Map identified as Map SD-DN-303 from the December 11, 2019, Board of Supervisors Meeting, all documents on file with the Clerk of the Board of Supervisors of the County of San Diego.

Density Changes

Sub-Area No.	Old	New
SD-DN-402	0.5	Remove

Spring Valley

Section 41. The zoning classification of certain real property is hereby changed as set forth herein, and more precisely delineated on the San Dieguito Zoning Use Regulation Changes Map identified as Map SV-UR-401 from the December 11, 2019, Board of Supervisors Meeting, all documents on file with the Clerk of the Board of Supervisors of the County of San Diego.

Use Regulation Changes

Sub-Area No.	Old	New
SV-UR-401	C36, RS	C36, RS

Section 42. The zoning classification of certain real property is hereby changed as set forth herein, and more precisely delineated on the San Dieguito Lot Size Changes Map identified as Map SV-LS-401 from the December 11, 2019, Board of Supervisors Meeting, all documents on file with the Clerk of the Board of Supervisors of the County of San Diego.

Lot Size Changes

Sub-Area No.	Old	New
SV-LS-401	6,000	None

Section 43. The zoning classification of certain real property is hereby changed as set forth herein, and more precisely delineated on the San Dieguito Building Type Changes Map identified as Map SV-BT-401 from the December 11, 2019, Board of Supervisors Meeting, all documents on file with the Clerk of the Board of Supervisors of the County of San Diego.

Building Type Changes

Sub-Area No.	Old	New
SV-BT-401	C	W

Section 44. The zoning classification of certain real property is hereby changed as set forth herein, and more precisely delineated on the San Dieguito Setback Changes Map identified as Map SV-SB-401 from the December 11, 2019, Board of Supervisors Meeting, all documents on file with the Clerk of the Board of Supervisors of the County of San Diego.

Setback Changes

Sub-Area No.	Old	New
SV-SB-401	J	O

Section 45. The zoning classification of certain real property is hereby changed as set forth herein, and more precisely delineated on the San Dieguito Zoning Use Regulation Changes Map identified as Map SV-UR-402 from the December 11, 2019, Board of Supervisors Meeting, all documents on file with the Clerk of the Board of Supervisors of the County of San Diego.

Use Regulation Changes

Sub-Area No.	Old	New
SV-UR-402	RS	S80

Valley Center

Section 46. The zoning classification of certain real property is hereby changed as set forth herein, and more precisely delineated on the Valley Center Zoning Use Regulation Changes Map identified as Map VC-UR-401 from the December 11, 2019, Board of Supervisors Meeting, all documents on file with the Clerk of the Board of Supervisors of the County of San Diego.

Use Regulation Changes

Sub-Area No.	Old	New
VC-UR-401	A70	S80

Section 47. The zoning classification of certain real property is hereby changed as set forth herein, and more precisely delineated on the Valley Center Zoning Use Regulation Changes Map identified as Maps VC-UR-402 from the December 11, 2019, Board of Supervisors Meeting, all documents on file with the Clerk of the Board of Supervisors of the County of San Diego.

Use Regulation Changes

Sub-Area No.	Old	New
VC-UR-402	A70, RR	S80

Section 48. The zoning classification of certain real property is hereby changed as set forth herein, and more precisely delineated on the Valley Center Zoning Use Regulation Changes Map identified as Maps VC-UR-404 from the December 11, 2019, Board of Supervisors Meeting, all documents on file with the Clerk of the Board of Supervisors of the County of San Diego.

Use Regulation Changes

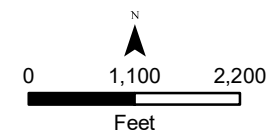
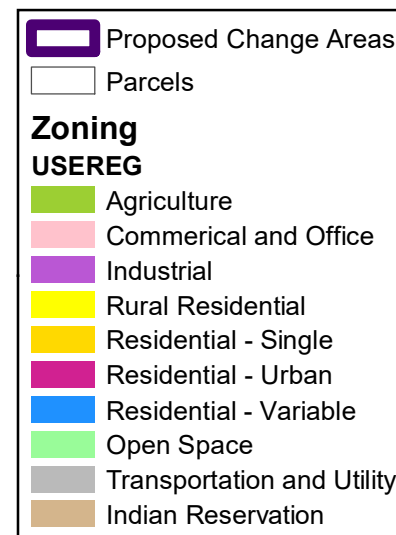
Sub-Area No.	Old	New
VC-UR-404	A70	S80

2019 General Plan Clean-Up AL401

Proposed Change

Sub Area No.

AL-UR-401



THIS MAP/DATA IS PROVIDED WITHOUT WARRANTY OF ANY KIND, EITHER EXPRESS OR IMPLIED, INCLUDING BUT NOT LIMITED TO, THE IMPLIED WARRANTIES OF MERCHANTABILITY AND FITNESS FOR A PARTICULAR PURPOSE. Note: This product may contain information from the SANDAG Regional Information System which cannot be reproduced without the written permission of SANDAG. This product may contain information reproduced with permission granted by Rand McNally & Company® to SanGIS. This map is copyrighted by Rand McNally & Company®. It is unlawful to copy or reproduce all or any part thereof, whether for personal use or resale, without the prior, written permission of Rand McNally & Company®.

Copyright SanGIS 2015 - All Rights Reserved. Full text of this legal notice can be found at: http://www.sangis.org/legal_notice.htm

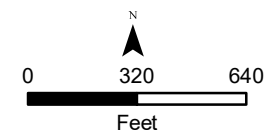
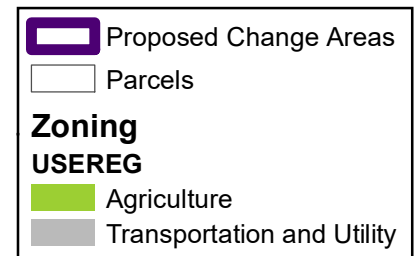
LUeGIS
Land Use & Environment Group
Geographic Information Services

2019 General Plan Clean-Up AL402

Proposed Change

Sub Area No.

AL-UR-402



THIS MAP/DATA IS PROVIDED WITHOUT WARRANTY OF ANY KIND, EITHER EXPRESS OR IMPLIED, INCLUDING BUT NOT LIMITED TO, THE IMPLIED WARRANTIES OF MERCHANTABILITY AND FITNESS FOR A PARTICULAR PURPOSE. Note: This product may contain information reproduced with permission from SANDAG. This product may contain information reproduced with permission granted by Rand McNally & Company® to SanGIS. This map is copyrighted by Rand McNally & Company®. It is unlawful to copy or reproduce all or any part thereof, whether for personal use or resale, without the prior, written permission of Rand McNally & Company®.

Copyright SanGIS 2015 - All Rights Reserved. Full text of this legal notice can be found at: http://www.sangis.org/legal_notice.htm

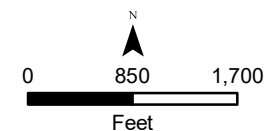
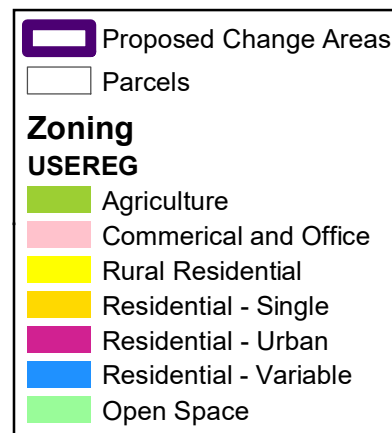
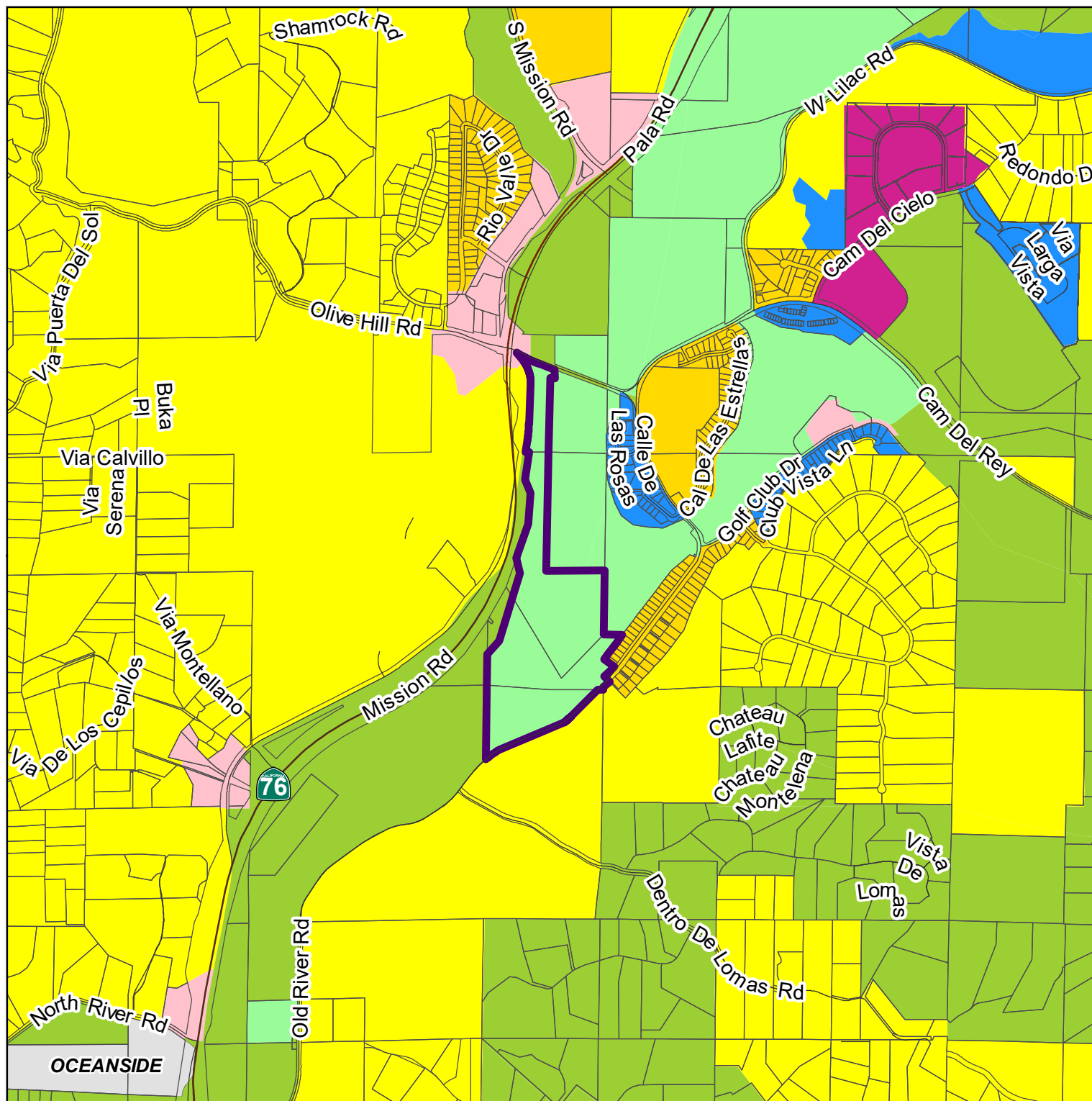
LUeGIS
Land Use & Environment Group
Geographic Information Services

2019 General Plan Clean-Up BO401

Proposed Change

Sub Area No.

BO-UR-401



THIS MAP/DATA IS PROVIDED WITHOUT WARRANTY OF ANY KIND, EITHER EXPRESS OR IMPLIED, INCLUDING BUT NOT LIMITED TO, THE IMPLIED WARRANTIES OF MERCHANTABILITY AND FITNESS FOR A PARTICULAR PURPOSE. Note: This product may contain information reproduced with permission from SANDAG. This product may contain information reproduced with permission granted by Rand McNally & Company® to SanGIS. This map is copyrighted by Rand McNally & Company®. It is unlawful to copy or reproduce all or any part thereof, whether for personal use or resale, without the prior, written permission of Rand McNally & Company®.

Copyright SanGIS 2015 - All Rights Reserved. Full text of this legal notice can be found at: http://www.sangis.org/legal_notice.htm

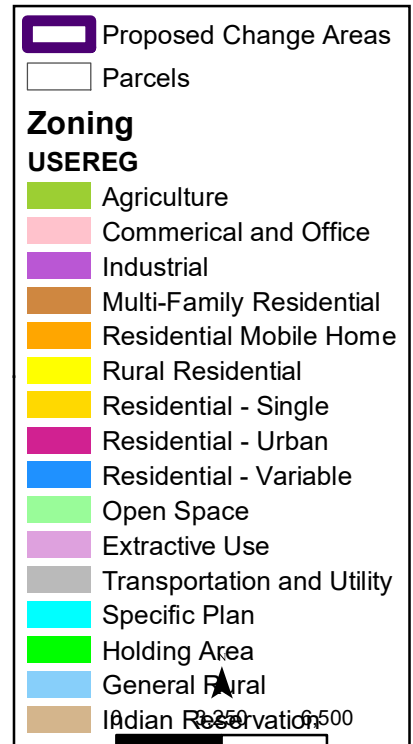
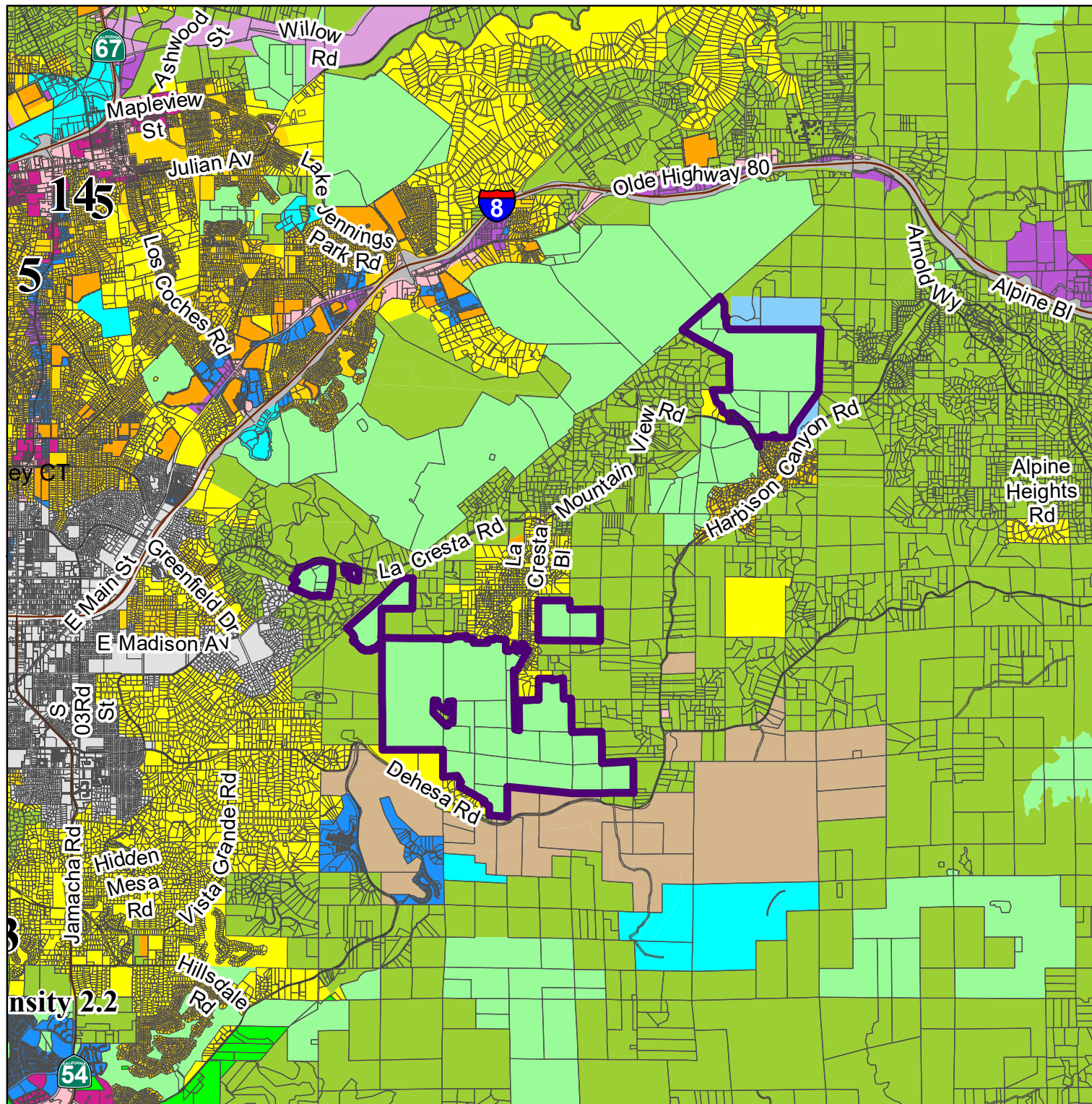
LUeGIS
Land Use & Environment Group
Geographic Information Services

2019 General Plan Clean-Up CD401

Proposed Change

Sub Area No.

CD-UR-401



THIS MAP/DATA IS PROVIDED WITHOUT WARRANTY OF ANY KIND, EITHER EXPRESS OR IMPLIED, INCLUDING BUT NOT LIMITED TO, THE IMPLIED WARRANTIES OF MERCHANTABILITY AND FITNESS FOR A PARTICULAR PURPOSE. Note: This product may contain information from the SANDAG Regional Information System which cannot be reproduced without the written permission of SANDAG. This product may contain information reproduced with permission granted by Rand McNally & Company® to SanGIS. This map is copyrighted by Rand McNally & Company®. It is unlawful to copy or reproduce all or any part thereof, whether for personal use or resale, without the prior, written permission of Rand McNally & Company®. Copyright SanGIS 2015. All Rights Reserved. Full text of this legal notice can be found at: http://www.sangis.org/legal_notice.htm

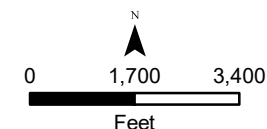
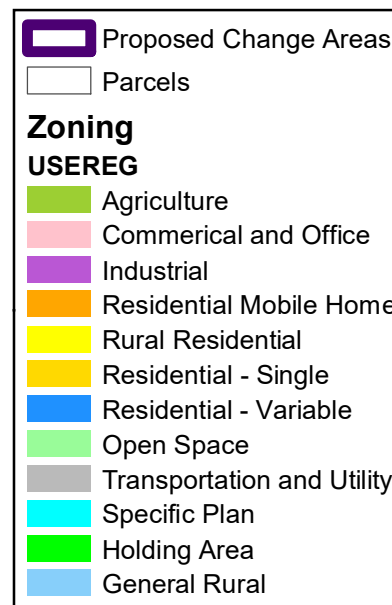
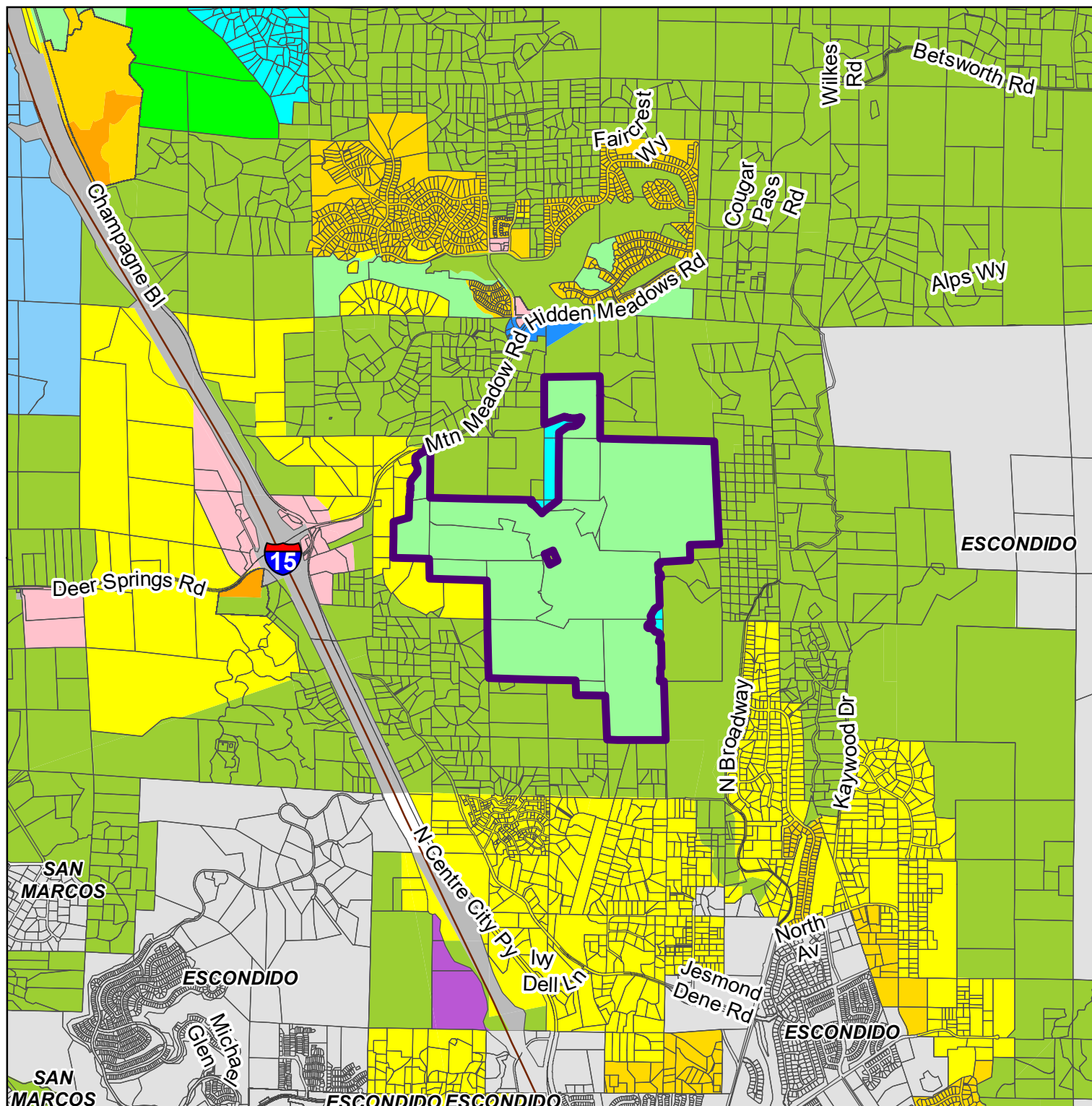
LUERGIS
Land Use & Environment Group
Geographic Information Services

2019 General Plan Clean-Up HM401

Proposed Change

Sub Area No.

HM-UR-401



THIS MAP/DATA IS PROVIDED WITHOUT WARRANTY OF ANY KIND, EITHER EXPRESS OR IMPLIED, INCLUDING BUT NOT LIMITED TO, THE IMPLIED WARRANTIES OF MERCHANTABILITY AND FITNESS FOR A PARTICULAR PURPOSE. Note: This product may contain information reproduced with permission granted by Rand McNally & Company® to SanGIS. This map is copyrighted by Rand McNally & Company®. It is unlawful to copy or reproduce all or any part thereof, whether for personal use or resale, without the prior, written permission of Rand McNally & Company®. Copyright SanGIS 2015 - All Rights Reserved. Full text of this legal notice can be found at: http://www.sangis.org/legal_notice.htm

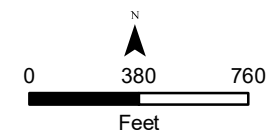
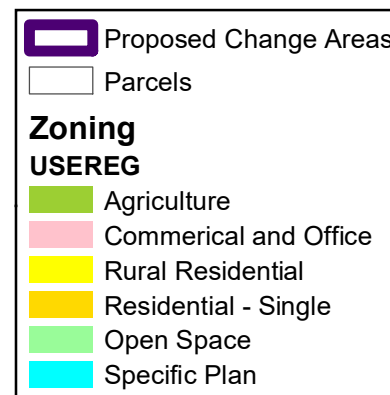
LUEGGIS
Land Use & Environment Group
Geographic Information Services

2019 General Plan Clean-Up JD401

Proposed Change

Sub Area No.

JD-UR-401,
JD-LA-401,
JD-SB-401



THIS MAP/DATA IS PROVIDED WITHOUT WARRANTY OF ANY KIND, EITHER EXPRESS OR IMPLIED, INCLUDING BUT NOT LIMITED TO, THE IMPLIED WARRANTIES OF MERCHANTABILITY AND FITNESS FOR A PARTICULAR PURPOSE. Note: This product may contain information reproduced with permission of SANDAG. This product may contain information reproduced with permission granted by Rand McNally & Company® to SanGIS. This map is copyrighted by Rand McNally & Company®. It is unlawful to copy or reproduce all or any part thereof, whether for personal use or resale, without the prior, written permission of Rand McNally & Company®.
Copyright SanGIS 2015 - All Rights Reserved. Full text of this legal notice can be found at: http://www.sangis.org/legal_notice.htm


LUEGGIS
Land Use & Environment Group
Geographic Information Services


2019 General Plan Clean-Up JD402

Proposed Change


Sub Area No.


JD-UR-402

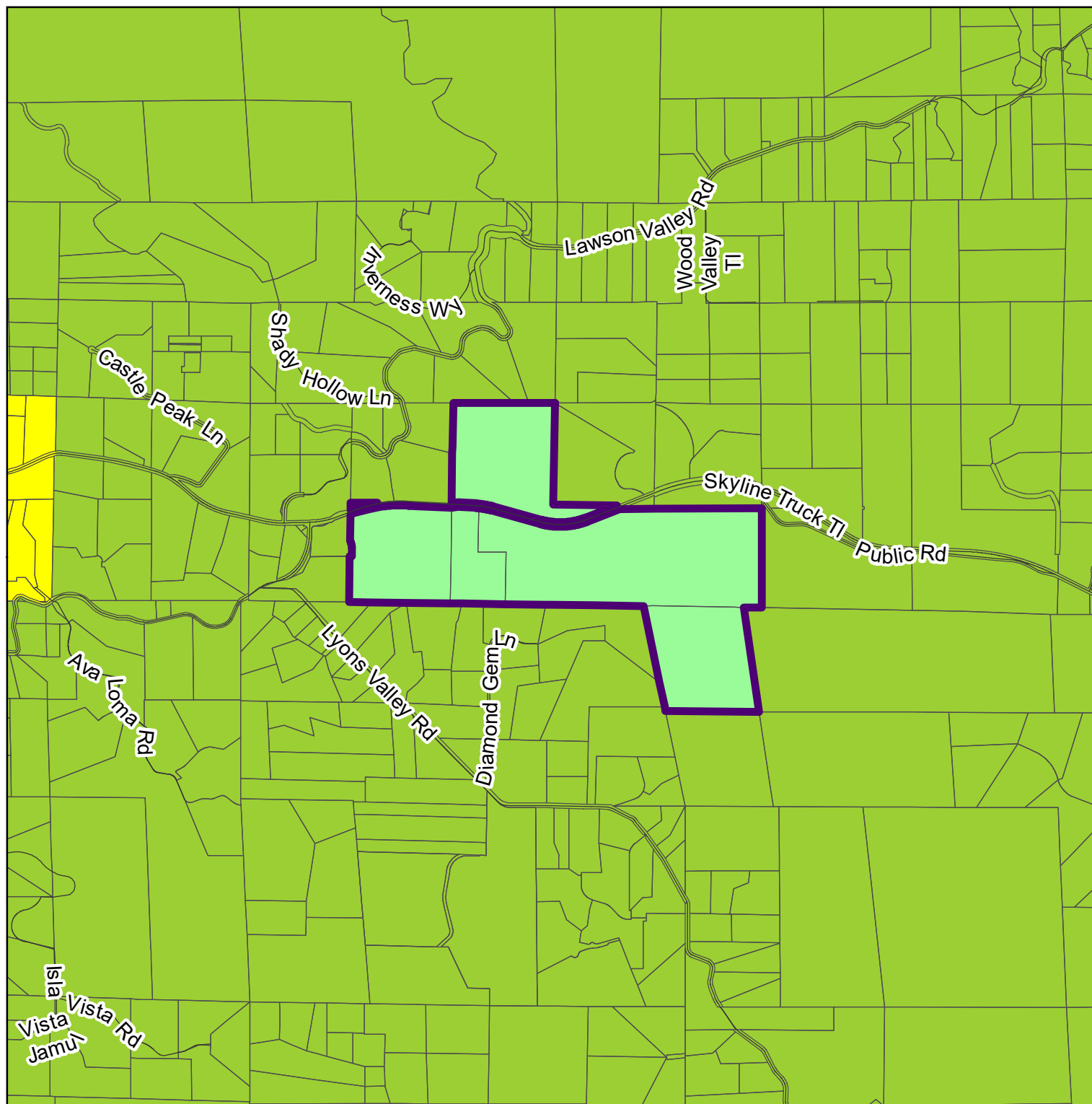
 Proposed Change Areas

 Parcels

Zoning
USEREG

 Agriculture

 Rural Residential



THIS MAP/DATA IS PROVIDED WITHOUT WARRANTY OF ANY KIND, EITHER EXPRESS OR IMPLIED, INCLUDING BUT NOT LIMITED TO, THE IMPLIED WARRANTIES OF MERCHANTABILITY AND FITNESS FOR A PARTICULAR PURPOSE. Note: This product may contain information reproduced with permission granted by Rand McNally & Company® to SanGIS. This map is copyrighted by Rand McNally & Company®. It is unlawful to copy or reproduce all or any part thereof, whether for personal use or resale, without the prior, written permission of Rand McNally & Company®.

Copyright SanGIS 2015. All Rights Reserved. Full text of this legal notice can be found at: http://www.sangis.org/legal_notice.htm

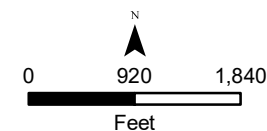
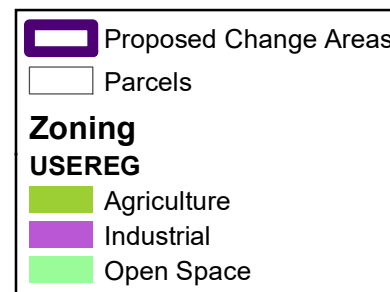
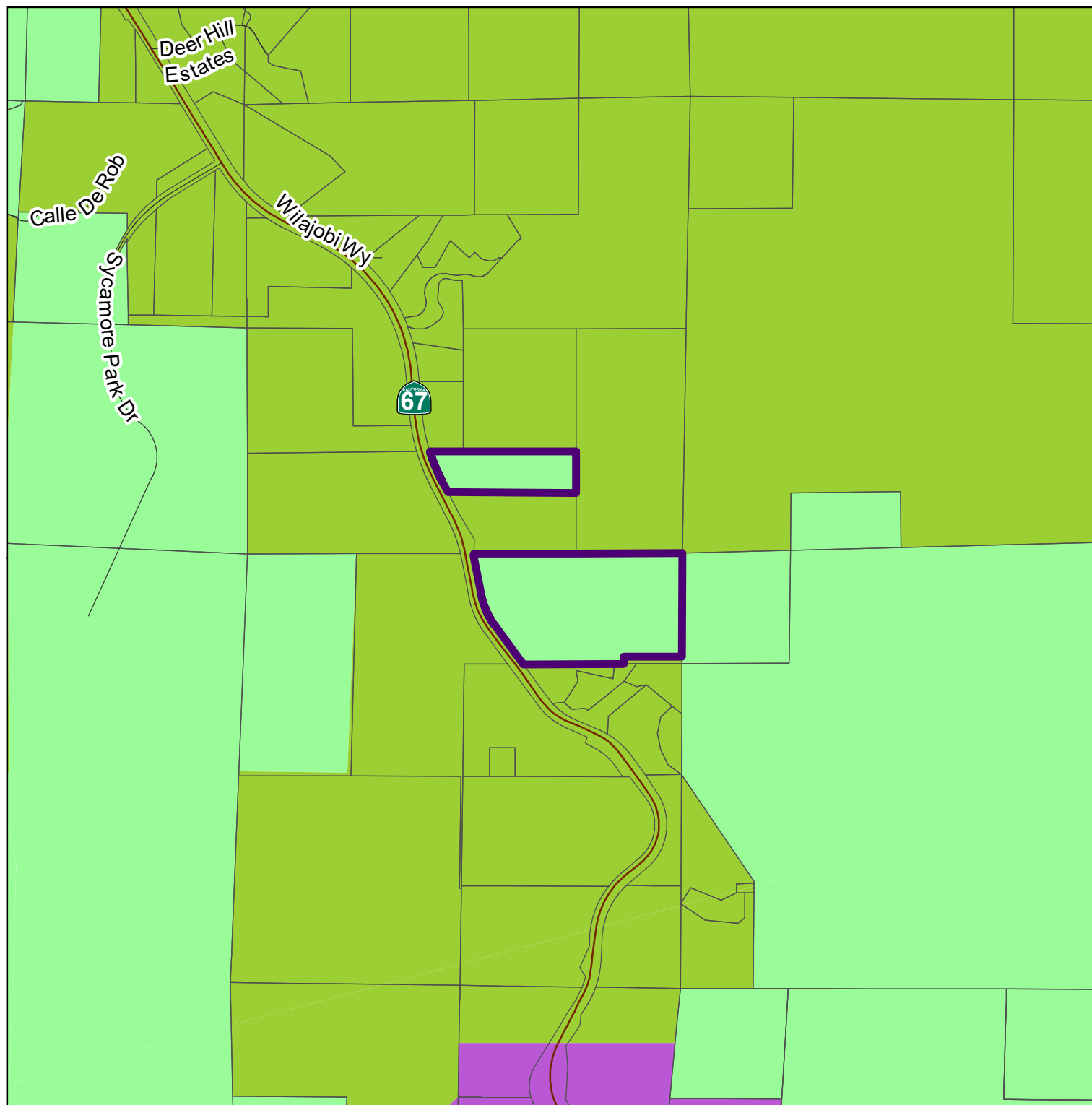
LUeGIS
Land Use & Environment Group
Geographic Information Services

2019 General Plan Clean-Up LS401

Proposed Change

Sub Area No.

LS-UR-401



THIS MAP/DATA IS PROVIDED WITHOUT WARRANTY OF ANY KIND, EITHER EXPRESS OR IMPLIED, INCLUDING BUT NOT LIMITED TO, THE IMPLIED WARRANTIES OF MERCHANTABILITY AND FITNESS FOR A PARTICULAR PURPOSE. Note: This product may contain information reproduced with permission granted by Rand McNally & Company® to SanGIS. This map is copyrighted by Rand McNally & Company®. It is unlawful to copy or reproduce all or any part thereof, whether for personal use or resale, without the prior, written permission of Rand McNally & Company®.

LUeGIS
Land Use & Environment Group
Geographic Information Services

LS-UR-403,
LS-UR-404,
LS-DN-404,
LS-BT-404,
LS-HC-404,
LS-SB-404,
LS-OS-404,
LS-SA-404,
LS-BT-405

THIS MAP/DATA IS PROVIDED WITHOUT WARRANTY OF ANY KIND, EITHER EXPRESS OR IMPLIED, INCLUDING BUT NOT LIMITED TO, THE IMPLIED WARRANTIES OF MERCHANTABILITY AND FITNESS FOR A PARTICULAR PURPOSE. Note: This product may contain information from the SANDAG Regional Information System which cannot be reproduced without the written permission of SANDAG. This product may contain information from SANDAG with permission granted by Rand McNally & Company® to SanGIS. This map is copyrighted by Rand McNally & Company®. It is unlawful to copy or reproduce all or any part thereof, whether for personal use or resale, without the prior, written permission of Rand McNally & Company®.

Copyright SanGIS 2015. All Rights Reserved. Full text of legal notice can be found at: http://www.sangis.org/legal_notice.htm

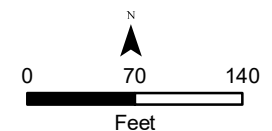
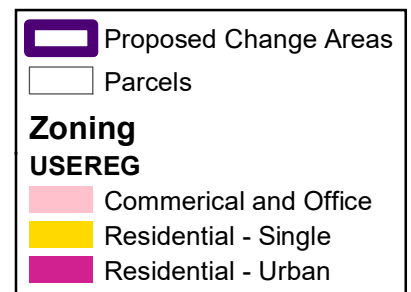


2019 General Plan Clean-Up LS404

Proposed Change

Sub Area No.

LS-UR-404



THIS MAP/DATA IS PROVIDED WITHOUT WARRANTY OF ANY KIND, EITHER EXPRESS OR IMPLIED, INCLUDING BUT NOT LIMITED TO, THE IMPLIED WARRANTIES OF MERCHANTABILITY AND FITNESS FOR A PARTICULAR PURPOSE. Note: This product may contain information reproduced with permission granted by Rand McNally & Company® to SanGIS. This map is copyrighted by Rand McNally & Company®. It is unlawful to copy or reproduce all or any part thereof, whether for personal use or resale, without the prior, written permission of Rand McNally & Company®.

Copyright SanGIS 2015 - All Rights Reserved. Full text of this legal notice can be found at: http://www.sangis.org/legal_notice.htm

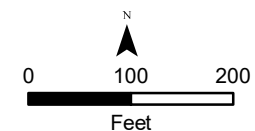
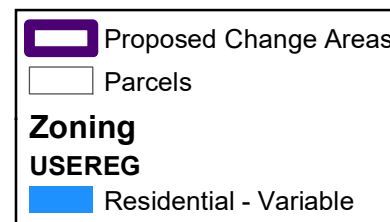
LUeGIS
Land Use & Environment Group
Geographic Information Services

2019 General Plan
Clean-Up
LS405

Proposed Change

Sub Area No.

LS-BT-405



THIS MAP/DATA IS PROVIDED WITHOUT WARRANTY OF ANY KIND, EITHER EXPRESS OR IMPLIED, INCLUDING BUT NOT LIMITED TO, THE IMPLIED WARRANTIES OF MERCHANTABILITY AND FITNESS FOR A PARTICULAR PURPOSE. Note: This product may contain information from the SANDAG Regional Information System which cannot be reproduced without the written permission of SANDAG. This product may contain information reproduced with permission granted by Rand McNally & Company® to SanGIS. This map is copyrighted by Rand McNally & Company®. It is unlawful to copy or reproduce all or any part thereof, whether for personal use or resale, without the prior, written permission of Rand McNally & Company®.
Copyright SanGIS 2015 - All Rights Reserved. Full text of this legal notice can be found at: http://www.sangis.org/legal_notice.htm

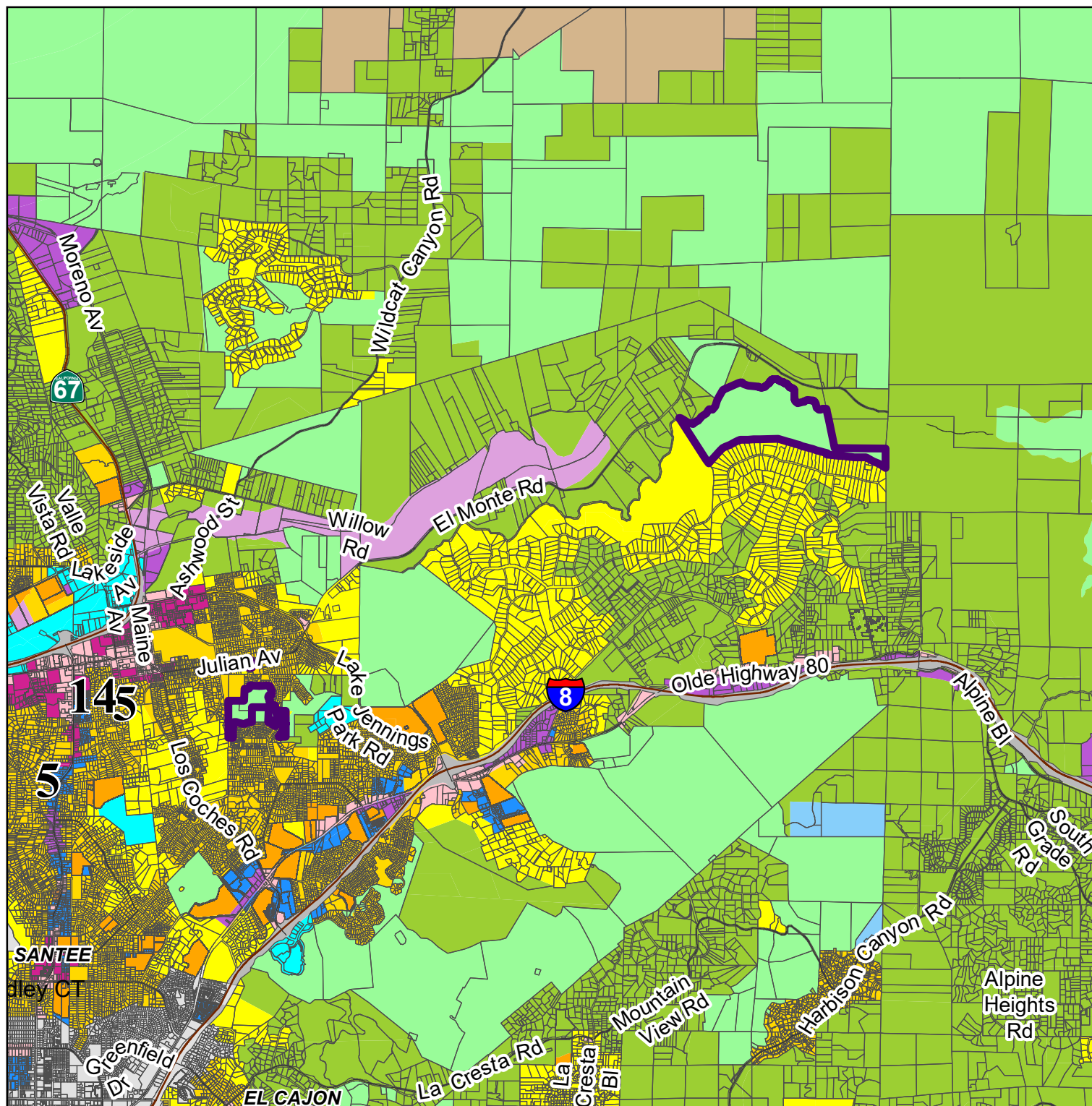
LUEGGIS
Land Use & Environment Group
Geographic Information Services

2019 General Plan Clean-Up LS406

Proposed Change

Sub Area No.

LS-UR-406,
LS-DN-406



THIS MAP/DATA IS PROVIDED WITHOUT WARRANTY OF ANY KIND, EITHER EXPRESS OR IMPLIED, INCLUDING BUT NOT LIMITED TO, THE IMPLIED WARRANTIES OF MERCHANTABILITY AND FITNESS FOR A PARTICULAR PURPOSE. Note: This product may contain information from the SANDAG Regional Information System which cannot be reproduced without the written permission of SANDAG. This product may contain information reproduced with permission granted by Rand McNally & Company® to SanGIS. This map is copyrighted by Rand McNally & Company®. It is unlawful to copy or reproduce all or any part thereof, whether for personal use or resale, without the prior, written permission of Rand McNally & Company®.

Copyright SanGIS 2015 - All Rights Reserved. Full text of this legal notice can be found at: http://www.sangis.org/legal_notice.htm

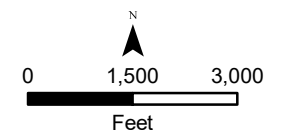
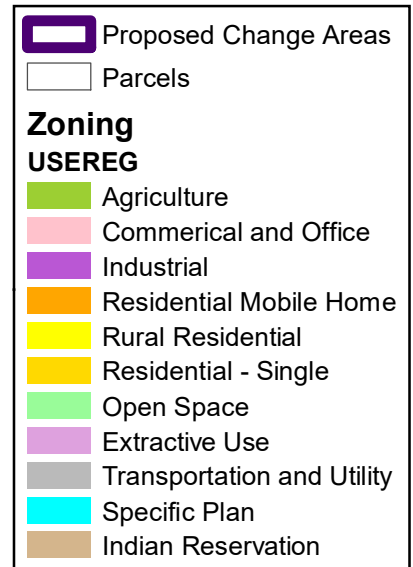
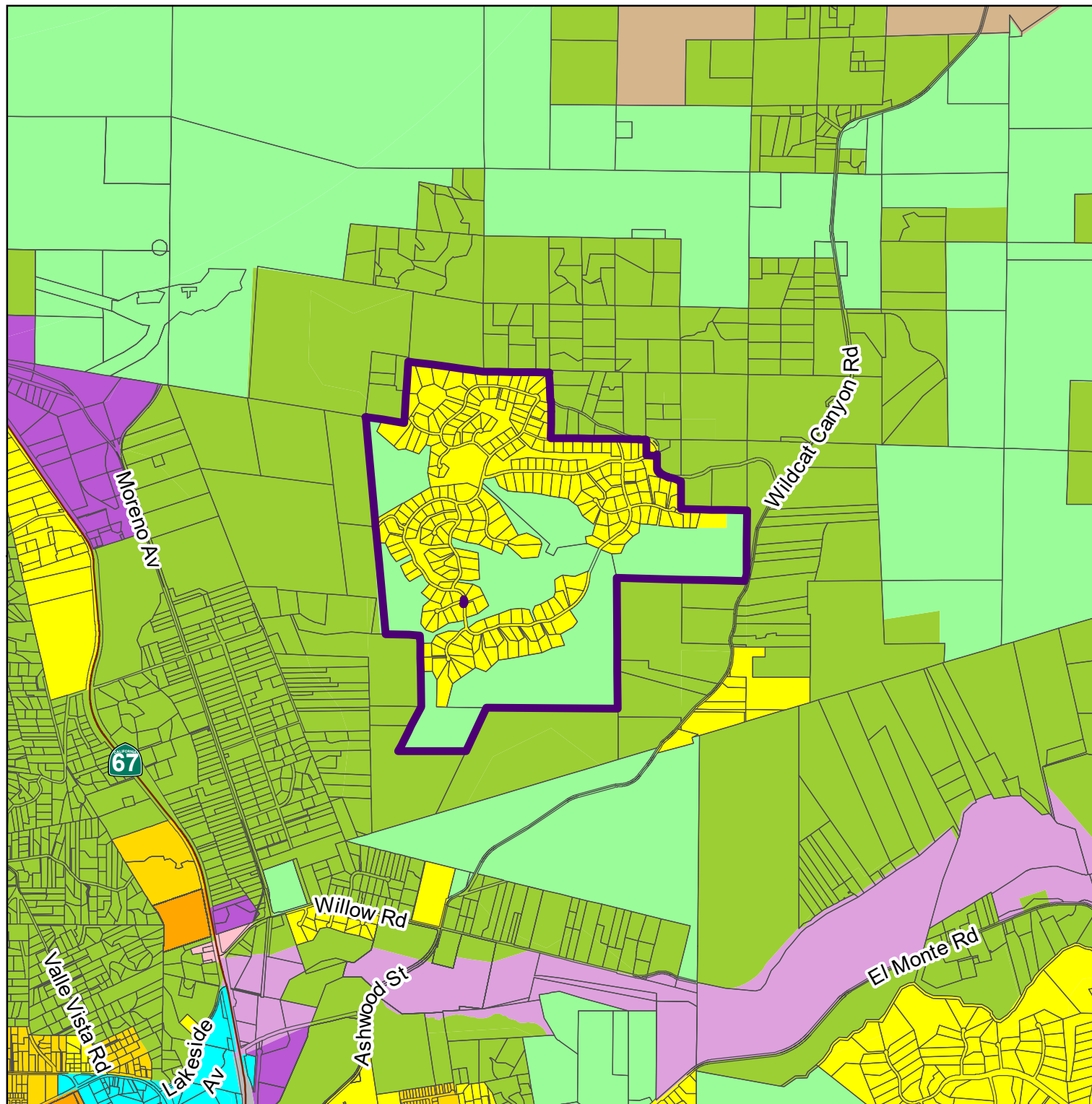
LU EGGIS
Land Use & Environment Group
Geographic Information Services

2019 General Plan Clean-Up LS407

Proposed Change

Sub Area No.

<Null>



THIS MAP/DATA IS PROVIDED WITHOUT WARRANTY OF ANY KIND, EITHER EXPRESS OR IMPLIED, INCLUDING BUT NOT LIMITED TO, THE IMPLIED WARRANTIES OF MERCHANTABILITY AND FITNESS FOR A PARTICULAR PURPOSE. Note: This product may contain information from the SANDAG Regional Information System which cannot be reproduced without the written permission of SANDAG. This product may contain information reproduced with permission granted by Rand McNally & Company® to SanGIS. This map is copyrighted by Rand McNally & Company®. It is unlawful to copy or reproduce all or any part thereof, whether for personal use or resale, without the prior, written permission of Rand McNally & Company®.

Copyright SanGIS 2015 - All Rights Reserved. Full text of this legal notice can be found at: http://www.sangis.org/legal_notice.htm


LUEGGIS
Land Use & Environment Group
Geographic Information Services


2019 General Plan Clean-Up NCM401

Proposed Change


Sub Area No.


NCM-LS-401



Proposed Change Areas



Parcels

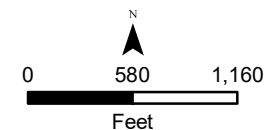
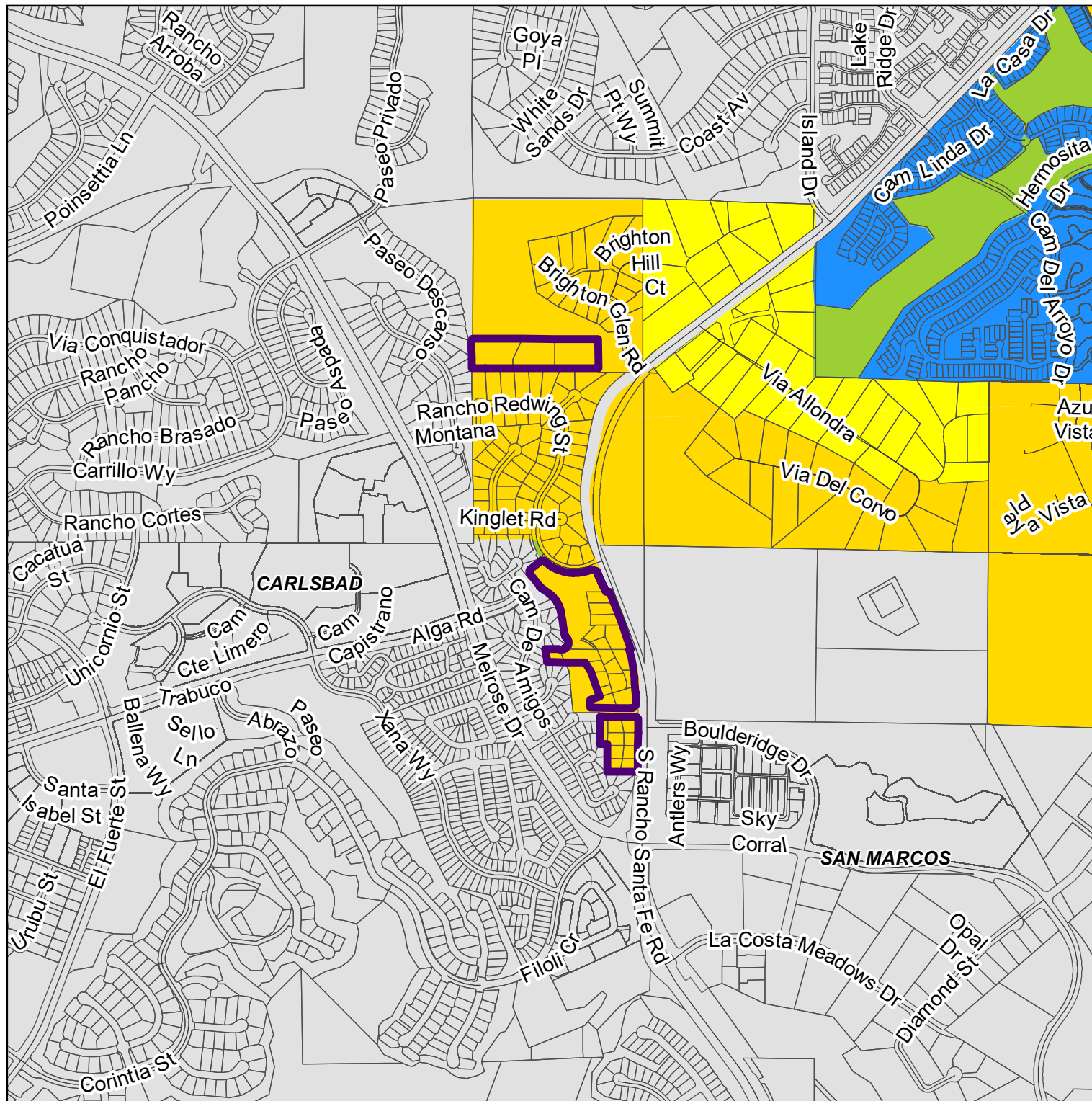
Zoning
USEREG


Agriculture


Rural Residential


Residential - Single


Residential - Variable



THIS MAP/DATA IS PROVIDED WITHOUT WARRANTY OF ANY KIND, EITHER EXPRESS OR IMPLIED, INCLUDING BUT NOT LIMITED TO, THE IMPLIED WARRANTIES OF MERCHANTABILITY AND FITNESS FOR A PARTICULAR PURPOSE. Note: This product may contain information reproduced with permission from SANDAG. This product may contain information reproduced with permission granted by Rand McNally & Company® to SanGIS. This map is copyrighted by Rand McNally & Company®. It is unlawful to copy or reproduce all or any part thereof, whether for personal use or resale, without the prior, written permission of Rand McNally & Company®.
Copyright SanGIS 2015. All Rights Reserved. Full text of this legal notice can be found at: http://www.sangis.org/legal_notice.htm

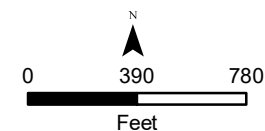
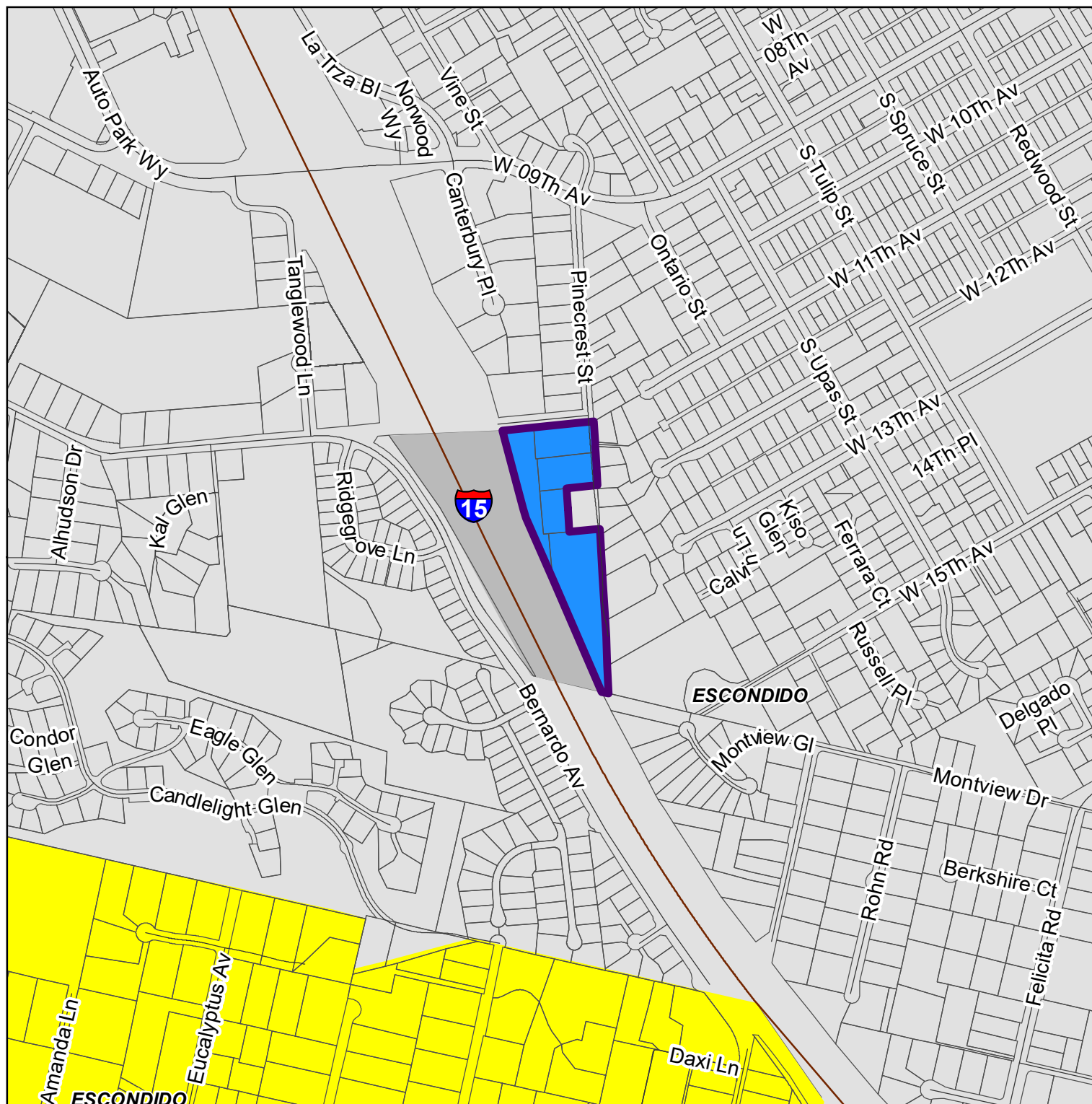
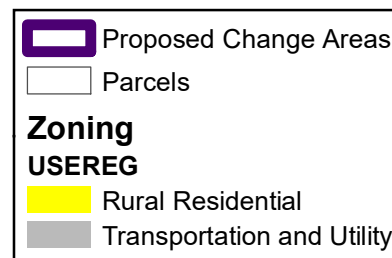
LUeGIS
Land Use & Environment Group
Geographic Information Services

2019 General Plan Clean-Up NCM402

Proposed Change

Sub Area No.

NCM-UR-402,
NCM-LS-402,
NCM-BT-402,
NCM-SB-402



THIS MAP/DATA IS PROVIDED WITHOUT WARRANTY OF ANY KIND, EITHER EXPRESS OR IMPLIED, INCLUDING BUT NOT LIMITED TO, THE IMPLIED WARRANTIES OF MERCHANTABILITY AND FITNESS FOR A PARTICULAR PURPOSE. Note: This product may contain information reproduced with permission granted by Rand McNally & Company® to SanGIS. This map is copyrighted by Rand McNally & Company®. It is unlawful to copy or reproduce all or any part thereof, whether for personal use or resale, without the prior, written permission of Rand McNally & Company®.
Copyright SanGIS 2015. All Rights Reserved. Full text of this legal notice can be found at: http://www.sangis.org/legal_notice.htm

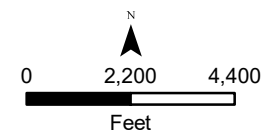
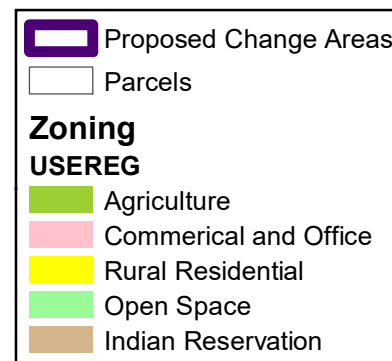
LU EGGIS
Land Use & Environment Group
Geographic Information Services

2019 General Plan Clean-Up NM401

Proposed Change

Sub Area No.

NM-UR-401



THIS MAP/DATA IS PROVIDED WITHOUT WARRANTY OF ANY KIND, EITHER EXPRESS OR IMPLIED, INCLUDING BUT NOT LIMITED TO, THE IMPLIED WARRANTIES OF MERCHANTABILITY AND FITNESS FOR A PARTICULAR PURPOSE. Note: This product may contain information reproduced with permission of SANDAG. This product may contain information reproduced with permission granted by Rand McNally & Company® to SanGIS. This map is copyrighted by Rand McNally & Company®. It is unlawful to copy or reproduce all or any part thereof, whether for personal use or resale, without the prior, written permission of Rand McNally & Company®.
Copyright SanGIS 2015. All Rights Reserved. Full text of this legal notice can be found at: http://www.sangis.org/legal_notice.htm

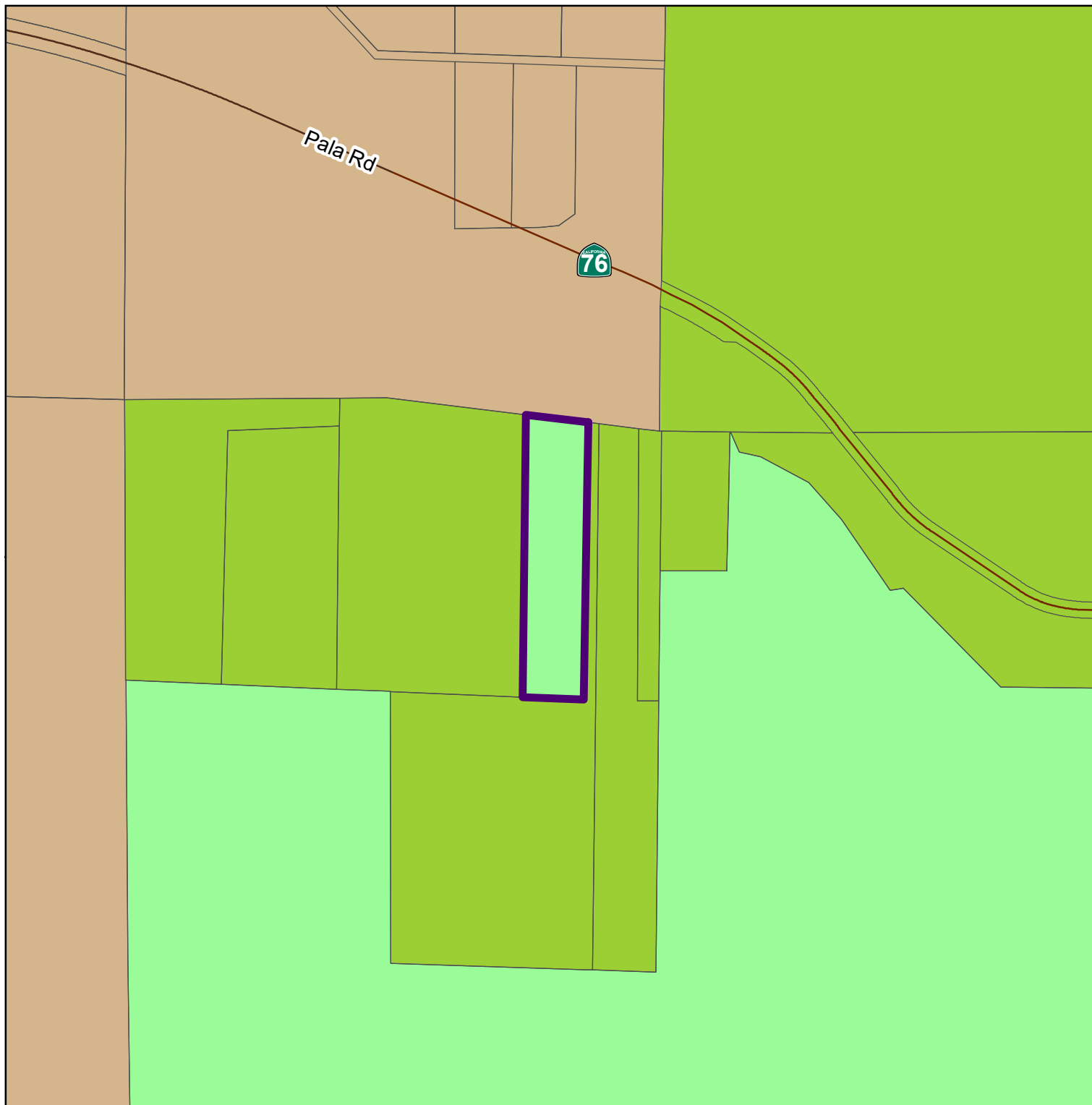
LUeGIS
Land Use & Environment Group
Geographic Information Services

2019 General Plan Clean-Up PP401

Proposed Change

Sub Area No.

PP-UR-401



Proposed Change Areas

Parcels

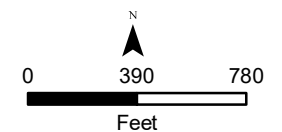
Zoning

USEREG

Agriculture

Open Space

Indian Reservation



THIS MAP/DATA IS PROVIDED WITHOUT WARRANTY OF ANY KIND, EITHER EXPRESS OR IMPLIED, INCLUDING BUT NOT LIMITED TO, THE IMPLIED WARRANTIES OF MERCHANTABILITY AND FITNESS FOR A PARTICULAR PURPOSE. Note: This product may contain information reproduced with permission of SANDAG. This product may contain information reproduced with permission granted by Rand McNally & Company® to SanGIS. This map is copyrighted by Rand McNally & Company®. It is unlawful to copy or reproduce all or any part thereof, whether for personal use or resale, without the prior, written permission of Rand McNally & Company®.

Copyright SanGIS 2015 - All Rights Reserved. Full text of this legal notice can be found at: http://www.sangis.org/legal_notice.htm

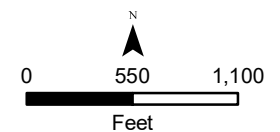
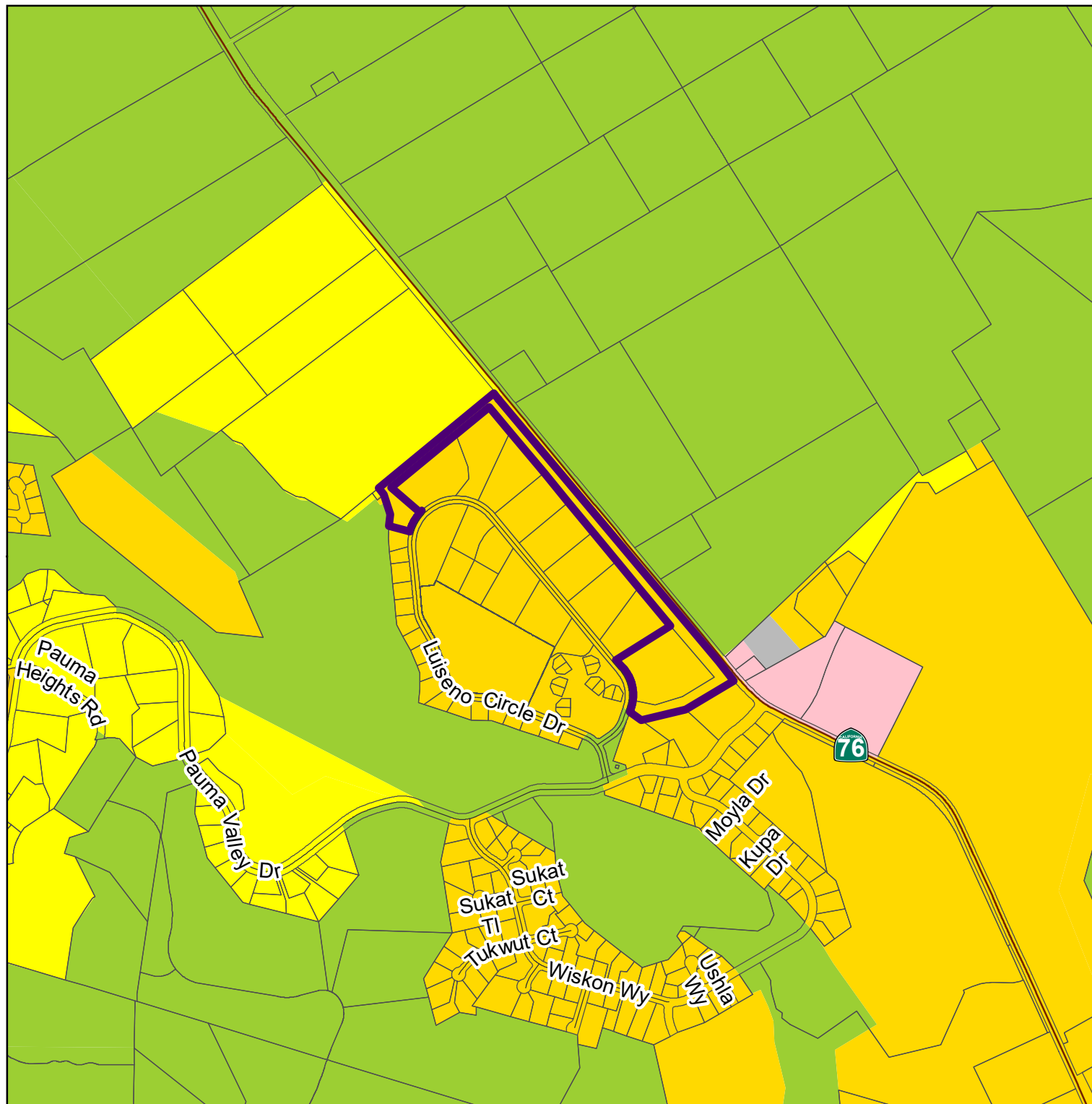
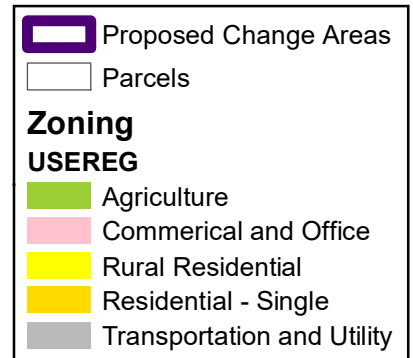
LUeGIS
Land Use & Environment Group
Geographic Information Services

2019 General Plan Clean-Up PP402

Proposed Change

Sub Area No.

PP-UR-402,
PP-LS-402,
PP-BT-402,
PP-HC-402,
PP-SB-402



THIS MAP/DATA IS PROVIDED WITHOUT WARRANTY OF ANY KIND, EITHER EXPRESS OR IMPLIED, INCLUDING BUT NOT LIMITED TO, THE IMPLIED WARRANTIES OF MERCHANTABILITY AND FITNESS FOR A PARTICULAR PURPOSE. Note: This product may contain information reproduced with permission of SANDAG. This product may contain information reproduced with permission granted by Rand McNally & Company® to SanGIS. This map is copyrighted by Rand McNally & Company®. It is unlawful to copy or reproduce all or any part thereof, whether for personal use or resale, without the prior, written permission of Rand McNally & Company®.

Copyright SanGIS 2015 - All Rights Reserved. Full text of this legal notice can be found at: http://www.sangis.org/legal_notice.htm

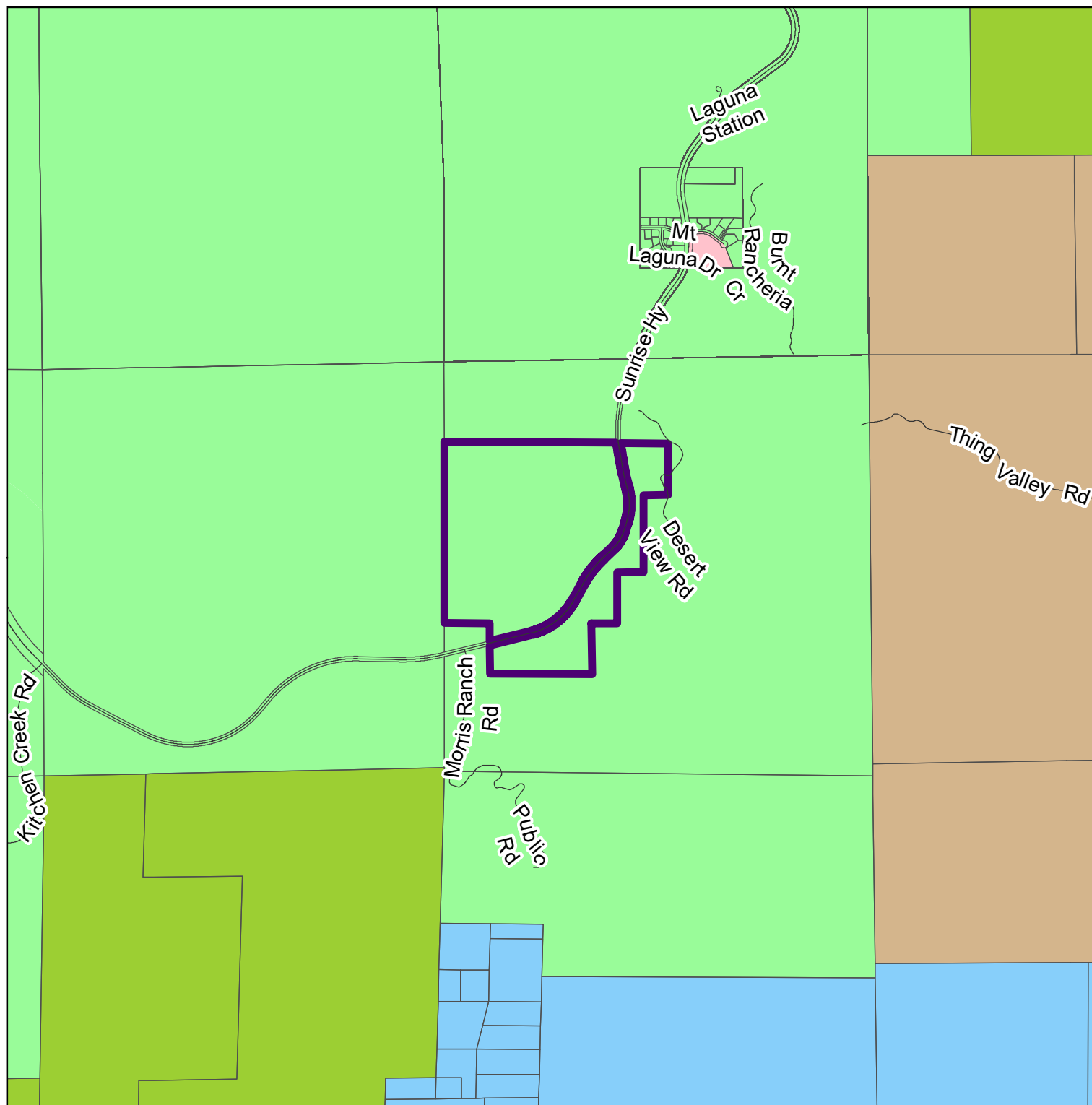
LUeGIS
Land Use & Environment Group
Geographic Information Services

2019 General Plan Clean-Up PV401

Proposed Change

Sub Area No.

PV-DN-401



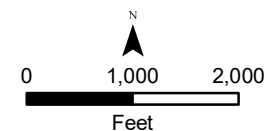
Proposed Change Areas

Parcels

Zoning

USEREG

- Agriculture
- Commerical and Office
- Open Space
- General Rural
- Indian Reservation



THIS MAP/DATA IS PROVIDED WITHOUT WARRANTY OF ANY KIND, EITHER EXPRESS OR IMPLIED, INCLUDING BUT NOT LIMITED TO, THE IMPLIED WARRANTIES OF MERCHANTABILITY AND FITNESS FOR A PARTICULAR PURPOSE. Note: This product may contain information from the SANDAG Regional Information System which cannot be reproduced without the written permission of SANDAG. This product may contain information reproduced with permission granted by Rand McNally & Company® to SanGIS. This map is copyrighted by Rand McNally & Company®. It is unlawful to copy or reproduce all or any part thereof, whether for personal use or resale, without the prior, written permission of Rand McNally & Company®.

Copyright SanGIS 2015. All Rights Reserved. Full text of this legal notice can be found at: http://www.sangis.org/legal_notice.htm

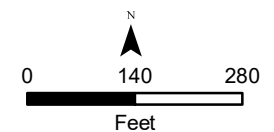
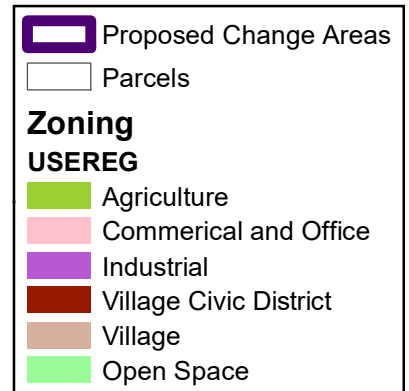
LUeGIS
Land Use & Environment Group
Geographic Information Services

2019 General Plan Clean-Up RM402

Proposed Change

Sub Area No.

<Null>



THIS MAP/DATA IS PROVIDED WITHOUT WARRANTY OF ANY KIND, EITHER EXPRESS OR IMPLIED, INCLUDING BUT NOT LIMITED TO, THE IMPLIED WARRANTIES OF MERCHANTABILITY AND FITNESS FOR A PARTICULAR PURPOSE. Note: This product may contain information from the SANDAG Regional Information System which cannot be reproduced without the written permission of SANDAG. This product may contain information reproduced with permission granted by Rand McNally & Company® to SanGIS. This map is copyrighted by Rand McNally & Company®. It is unlawful to copy or reproduce all or any part thereof, whether for personal use or resale, without the prior, written permission of Rand McNally & Company®.

Copyright SanGIS 2015 - All Rights Reserved. Full text of this legal notice can be found at: http://www.sangis.org/legal_notice.htm

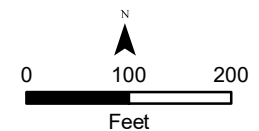
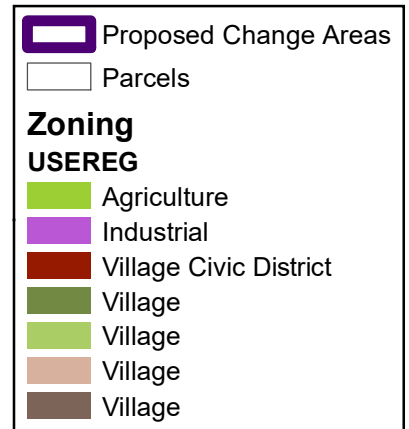
LUeGIS
Land Use & Environment Group
Geographic Information Services

2019 General Plan Clean-Up RM403

Proposed Change

Sub Area No.

RM-UR-403



THIS MAP/DATA IS PROVIDED WITHOUT WARRANTY OF ANY KIND, EITHER EXPRESS OR IMPLIED, INCLUDING BUT NOT LIMITED TO, THE IMPLIED WARRANTIES OF MERCHANTABILITY AND FITNESS FOR A PARTICULAR PURPOSE. Note: This product may contain information reproduced with permission of SANDAG. This product may contain information reproduced with permission granted by Rand McNally & Company® to SanGIS. This map is copyrighted by Rand McNally & Company®. It is unlawful to copy or reproduce all or any part thereof, whether for personal use or resale, without the prior, written permission of Rand McNally & Company®.

Copyright SanGIS 2015 - All Rights Reserved. Full text of this legal notice can be found at: http://www.sangis.org/legal_notice.htm


LUEGGIS
Land Use & Environment Group
Geographic Information Services


2019 General Plan Clean-Up SD401

Proposed Change

Sub Area No.


<Null>


 Proposed Change Areas

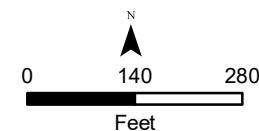
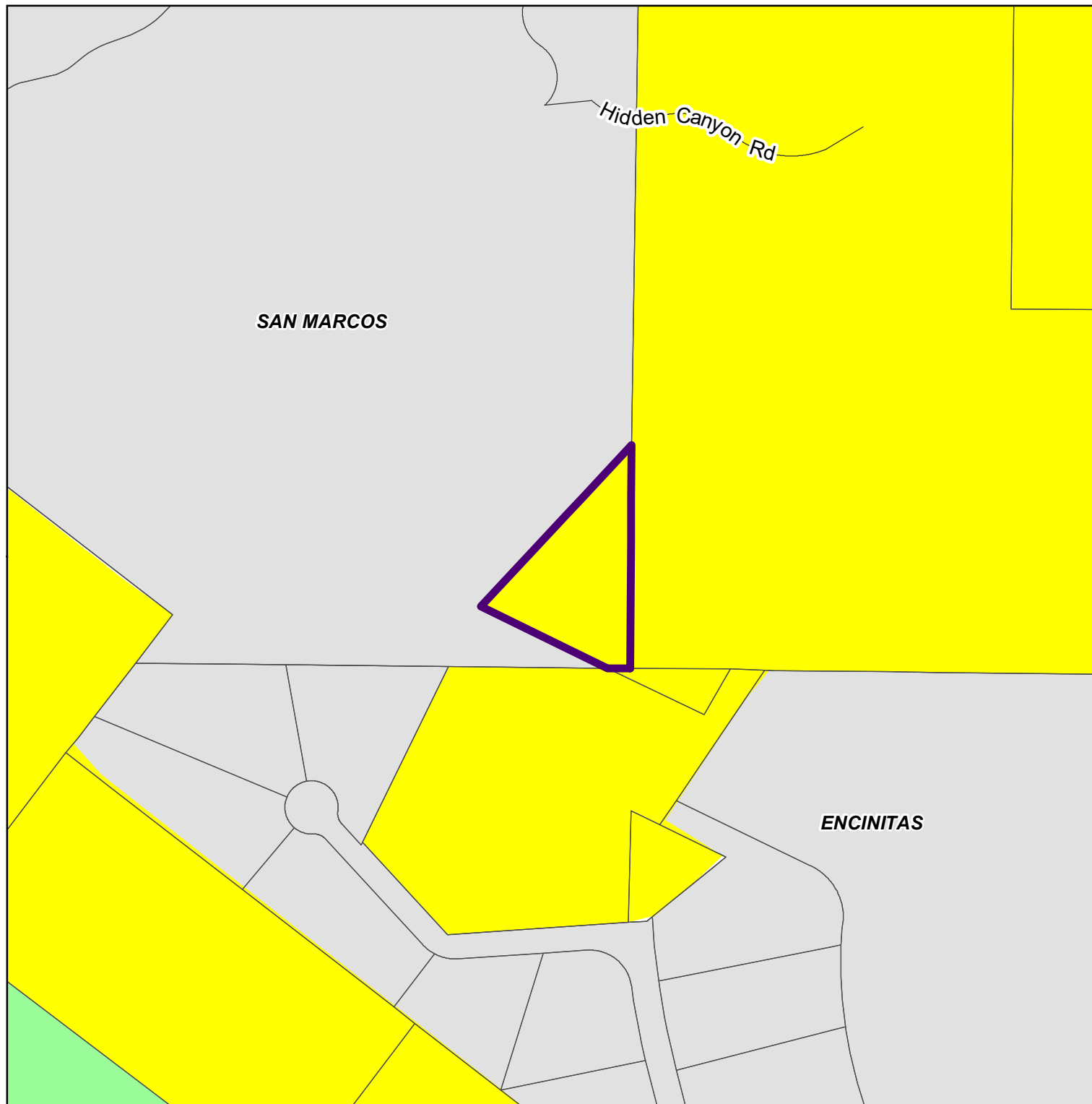
 Parcels

Zoning

USEREG

 Rural Residential

 Open Space



THIS MAP/DATA IS PROVIDED WITHOUT WARRANTY OF ANY KIND, EITHER EXPRESS OR IMPLIED, INCLUDING BUT NOT LIMITED TO, THE IMPLIED WARRANTIES OF MERCHANTABILITY AND FITNESS FOR A PARTICULAR PURPOSE. Note: This product may contain information reproduced with permission of SANDAG. This product may contain information reproduced with permission granted by Rand McNally & Company® to SanGIS. This map is copyrighted by Rand McNally & Company®. It is unlawful to copy or reproduce all or any part thereof, whether for personal use or resale, without the prior, written permission of Rand McNally & Company®.
Copyright SanGIS 2015. All Rights Reserved. Full text of this legal notice can be found at: http://www.sangis.org/legal_notice.htm

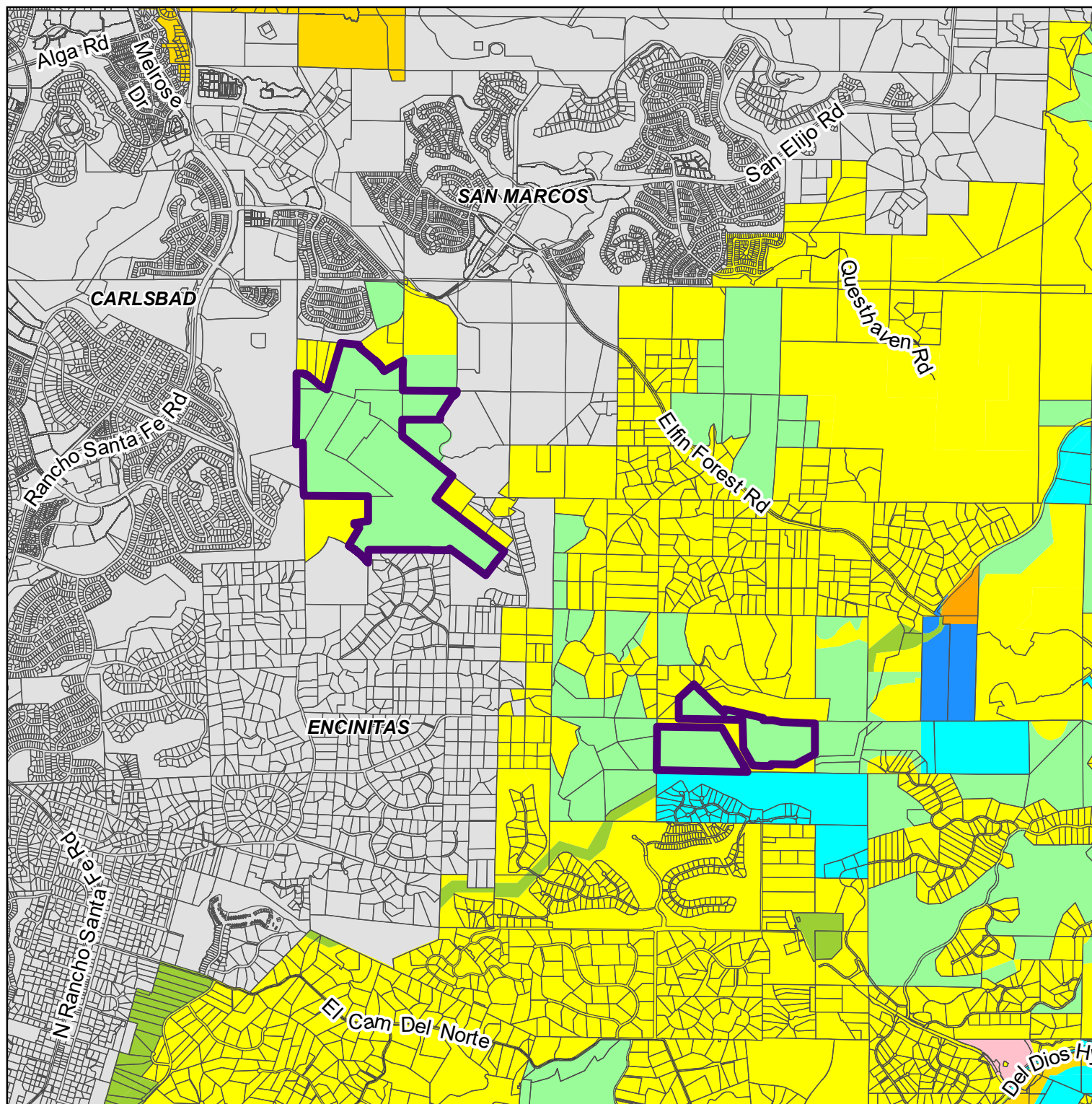
LUEGGIS
Land Use & Environment Group
Geographic Information Services

2019 General Plan Clean-Up SD402

Proposed Change

Sub Area No.

SD-UR-402,
SD-DN-402



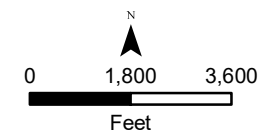
Proposed Change Areas

Parcels

Zoning

USEREG

- Agriculture
- Commerical and Office
- Residential Mobile Home
- Rural Residential
- Residential - Single
- Residential - Variable
- Open Space
- Specific Plan



THIS MAP/DATA IS PROVIDED WITHOUT WARRANTY OF ANY KIND, EITHER EXPRESS OR IMPLIED, INCLUDING BUT NOT LIMITED TO, THE IMPLIED WARRANTIES OF MERCHANTABILITY AND FITNESS FOR A PARTICULAR PURPOSE. Note: This product may contain information reproduced with permission from SANDAG. This product may contain information reproduced with permission granted by Rand McNally & Company® to SanGIS. This map is copyrighted by Rand McNally & Company®. It is unlawful to copy or reproduce all or any part thereof, whether for personal use or resale, without the prior, written permission of Rand McNally & Company®. Copyright SanGIS 2015. All Rights Reserved. Full text of this legal notice can be found at: http://www.sangis.org/legal_notice.htm

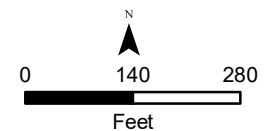
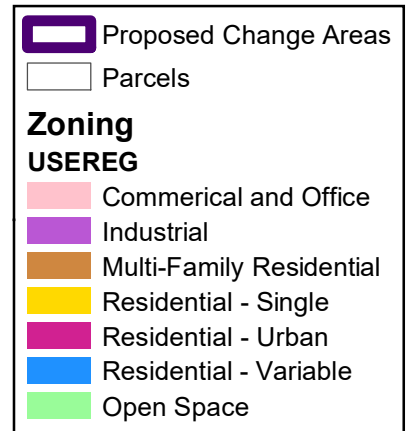
LU EGGIS
Land Use & Environment Group
Geographic Information Services

2019 General Plan Clean-Up SV401

Proposed Change

Sub Area No.

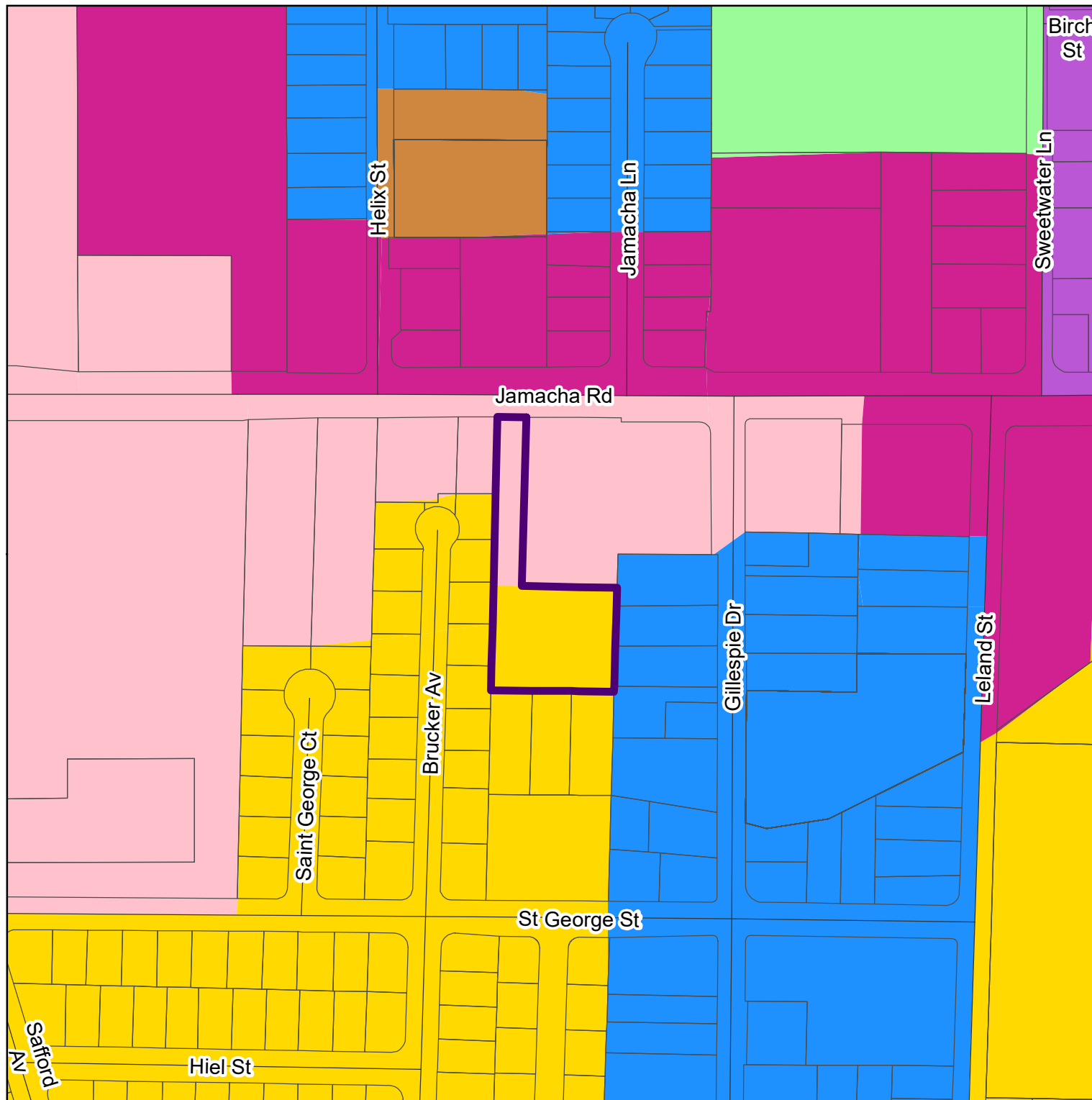
SV-UR-401,
SV-LS-401,
SV-BT-401,
SV-SB-401



THIS MAP/DATA IS PROVIDED WITHOUT WARRANTY OF ANY KIND, EITHER EXPRESS OR IMPLIED, INCLUDING BUT NOT LIMITED TO, THE IMPLIED WARRANTIES OF MERCHANTABILITY AND FITNESS FOR A PARTICULAR PURPOSE. Note: This product may contain information reproduced with permission of SANDAG. This product may contain information reproduced with permission granted by Rand McNally & Company® to SanGIS. This map is copyrighted by Rand McNally & Company®. It is unlawful to copy or reproduce all or any part thereof, whether for personal use or resale, without the prior, written permission of Rand McNally & Company®.

Copyright SanGIS 2015 - All Rights Reserved. Full text of this legal notice can be found at: http://www.sangis.org/legal_notice.htm

LUeGIS
Land Use & Environment Group
Geographic Information Services

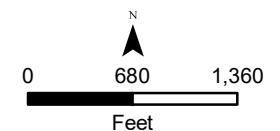
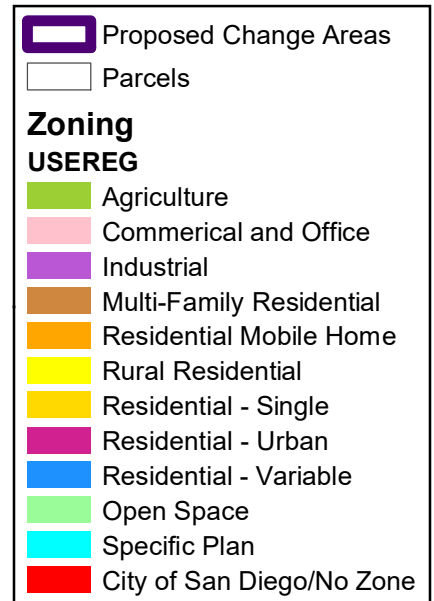
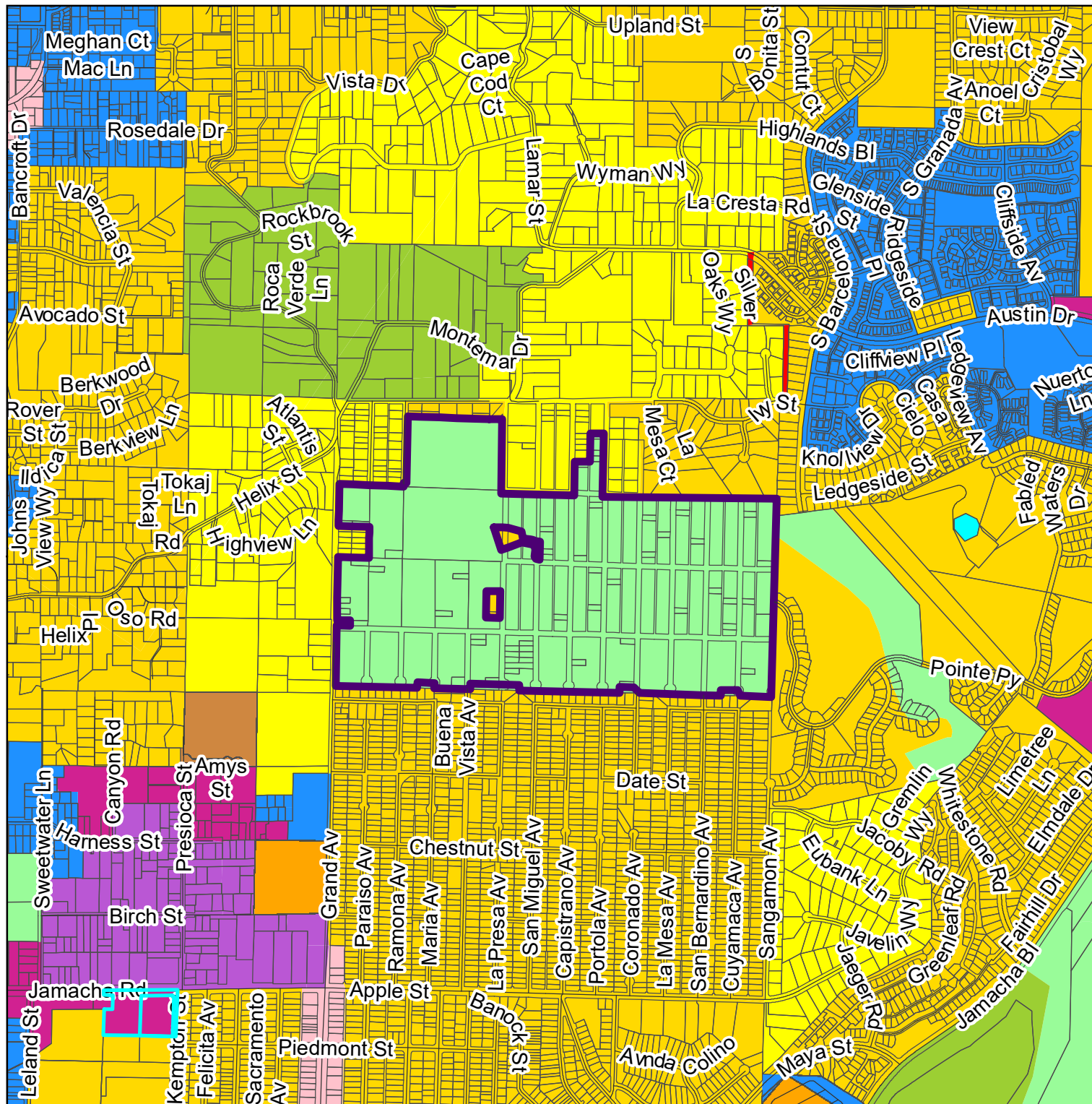


2019 General Plan Clean-Up SV402

Proposed Change

Sub Area No.

SV-UR-402



THIS MAP/DATA IS PROVIDED WITHOUT WARRANTY OF ANY KIND, EITHER EXPRESS OR IMPLIED, INCLUDING BUT NOT LIMITED TO, THE IMPLIED WARRANTIES OF MERCHANTABILITY AND FITNESS FOR A PARTICULAR PURPOSE. Note: This product may contain information from the SANDAG Regional Information System which cannot be reproduced without the written permission of SANDAG. This product may contain information reproduced with permission granted by Rand McNally & Company® to SanGIS. This map is copyrighted by Rand McNally & Company®. It is unlawful to copy or reproduce all or any part thereof, whether for personal use or resale, without the prior, written permission of Rand McNally & Company®.
 Copyright SanGIS 2015. All Rights Reserved. Full text of this legal notice can be found at: http://www.sangis.org/legal_notice.htm


LUENGIS
 Land Use & Environment Group
 Geographic Information Services


2019 General Plan Clean-Up VC401

Proposed Change


Sub Area No.


<Null>


 Proposed Change Areas

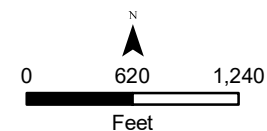
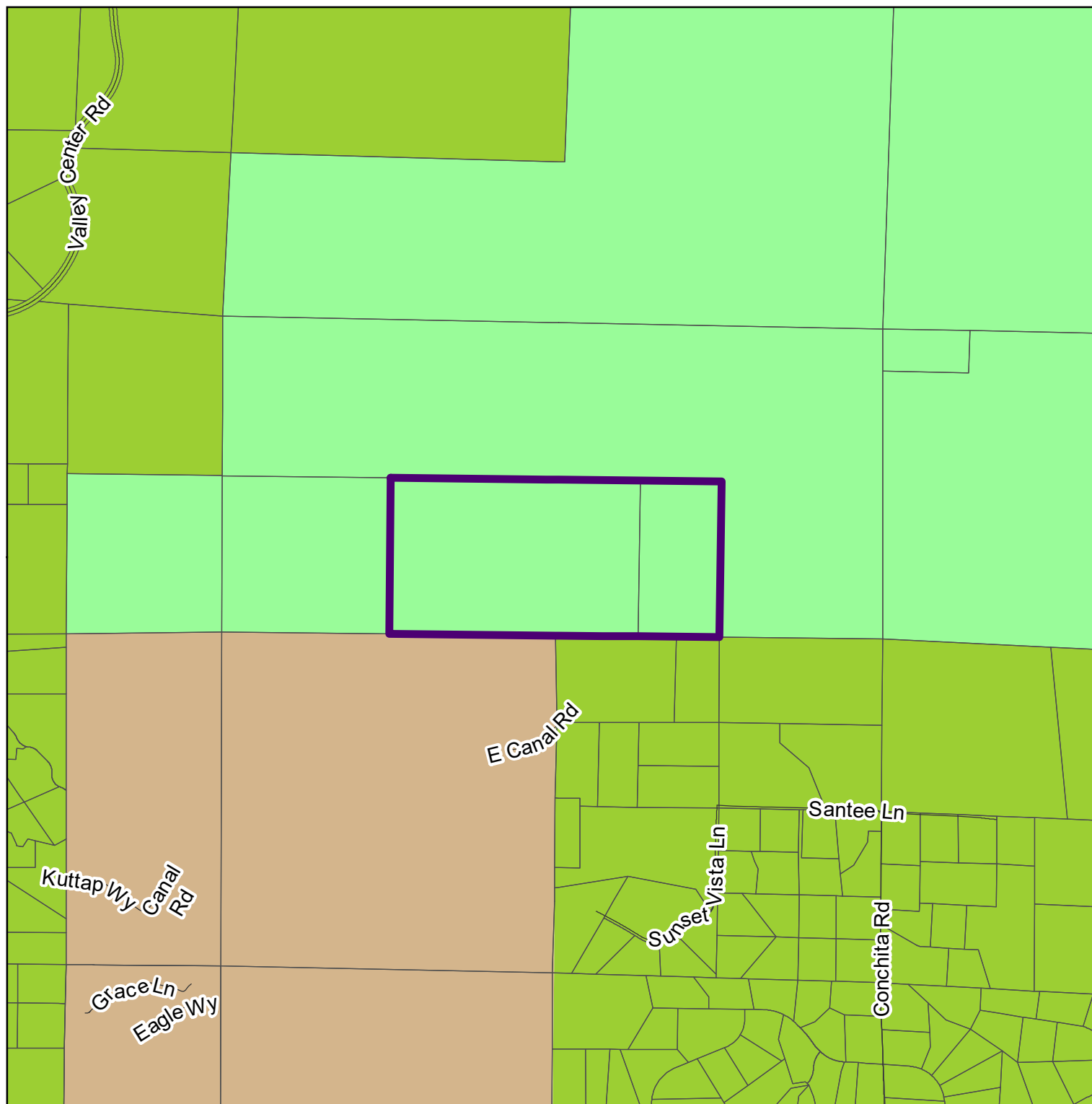
 Parcels

Zoning
USEREG

 Agriculture

 Open Space

 Indian Reservation



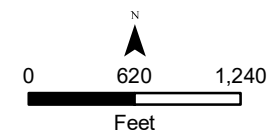
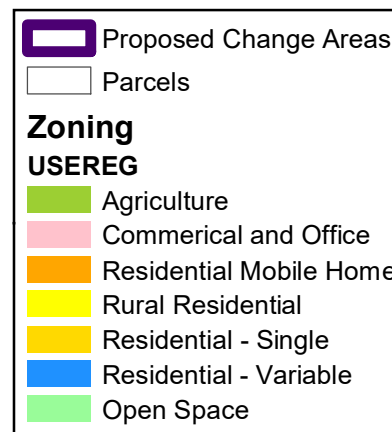
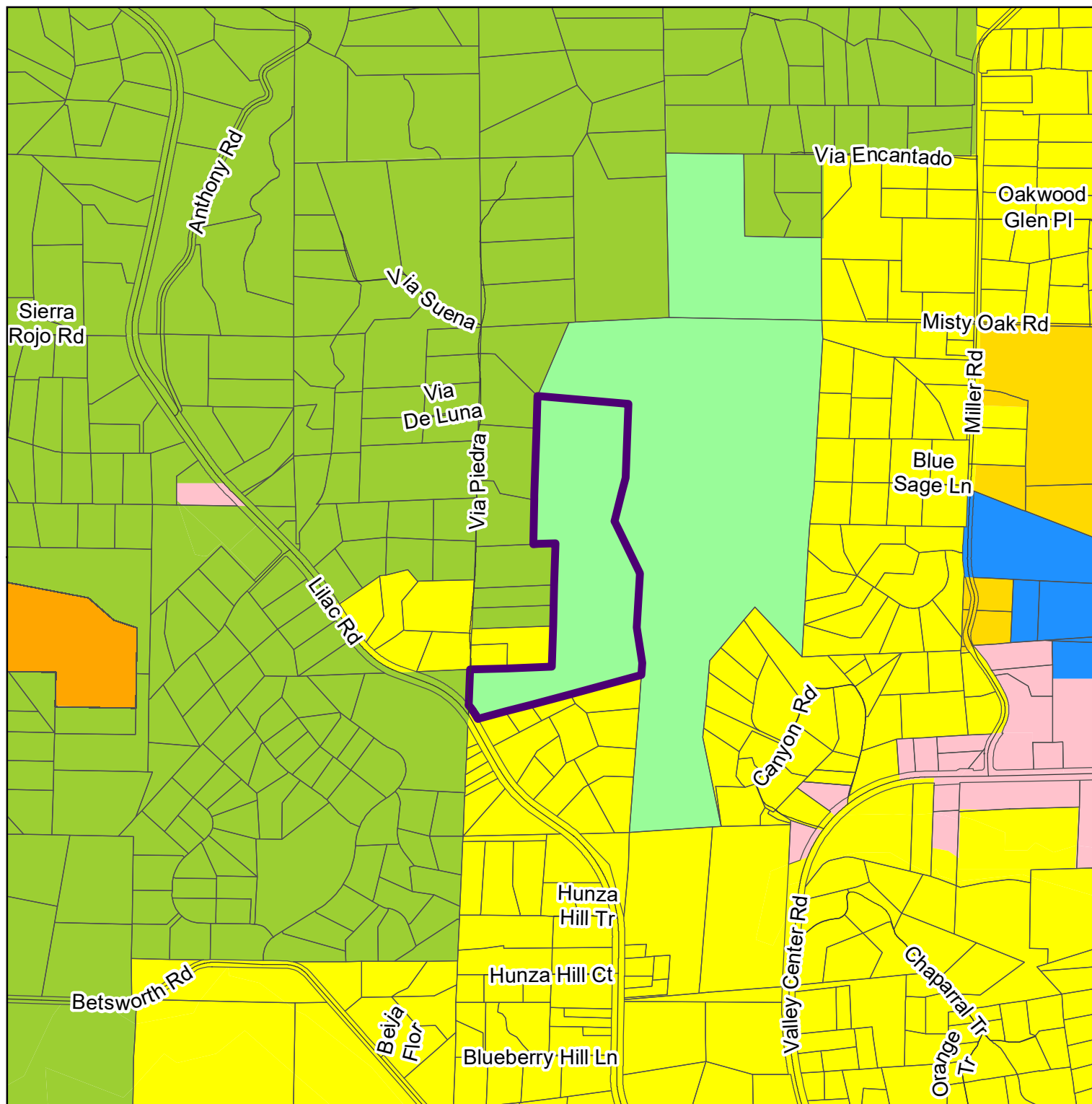
THIS MAP/DATA IS PROVIDED WITHOUT WARRANTY OF ANY KIND, EITHER EXPRESS OR IMPLIED, INCLUDING BUT NOT LIMITED TO, THE IMPLIED WARRANTIES OF MERCHANTABILITY AND FITNESS FOR A PARTICULAR PURPOSE. Note: This product may contain information from the SANDAG Regional Information System which cannot be reproduced without the written permission of SANDAG. This product may contain information reproduced with permission granted by Rand McNally & Company® to SanGIS. This map is copyrighted by Rand McNally & Company®. It is unlawful to copy or reproduce all or any part thereof, whether for personal use or resale, without the prior, written permission of Rand McNally & Company®.

2019 General Plan Clean-Up VC402

Proposed Change

Sub Area No.

<Null>



THIS MAP/DATA IS PROVIDED WITHOUT WARRANTY OF ANY KIND, EITHER EXPRESS OR IMPLIED, INCLUDING BUT NOT LIMITED TO, THE IMPLIED WARRANTIES OF MERCHANTABILITY AND FITNESS FOR A PARTICULAR PURPOSE. Note: This product may contain information reproduced with permission from SANDAG. This product may contain information reproduced with permission granted by Rand McNally & Company® to SanGIS. This map is copyrighted by Rand McNally & Company®. It is unlawful to copy or reproduce all or any part thereof, whether for personal use or resale, without the prior, written permission of Rand McNally & Company®.

Copyright SanGIS 2015 - All Rights Reserved. Full text of this legal notice can be found at: http://www.sangis.org/legal_notice.htm

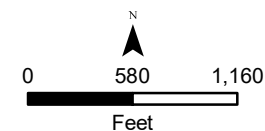
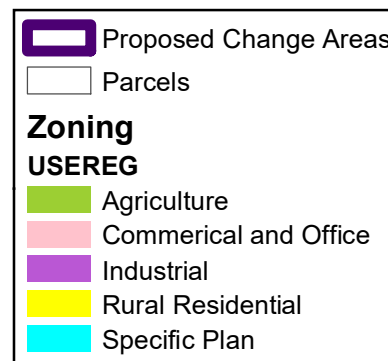
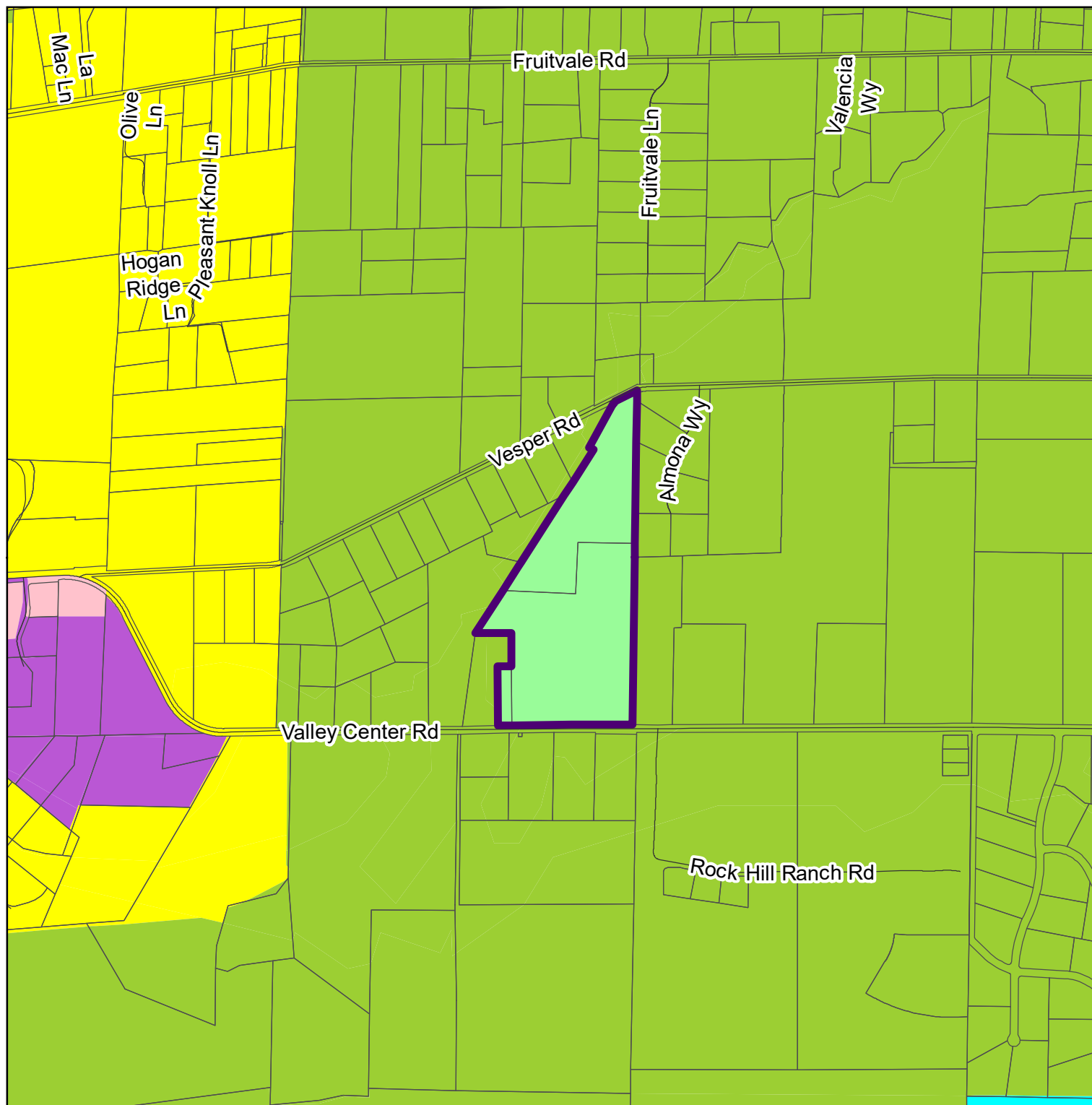
LUeGIS
Land Use & Environment Group
Geographic Information Services

2019 General Plan Clean-Up VC404

Proposed Change

Sub Area No.

<Null>



THIS MAP/DATA IS PROVIDED WITHOUT WARRANTY OF ANY KIND, EITHER EXPRESS OR IMPLIED, INCLUDING BUT NOT LIMITED TO, THE IMPLIED WARRANTIES OF MERCHANTABILITY AND FITNESS FOR A PARTICULAR PURPOSE. Note: This product may contain information reproduced with permission of SANDAG. This product may contain information reproduced with permission granted by Rand McNally & Company® to SanGIS. This map is copyrighted by Rand McNally & Company®. It is unlawful to copy or reproduce all or any part thereof, whether for personal use or resale, without the prior, written permission of Rand McNally & Company®.
Copyright SanGIS 2015. All Rights Reserved. Full text of this legal notice can be found at: http://www.sangis.org/legal_notice.htm

LUEGGIS
Land Use & Environment Group
Geographic Information Services