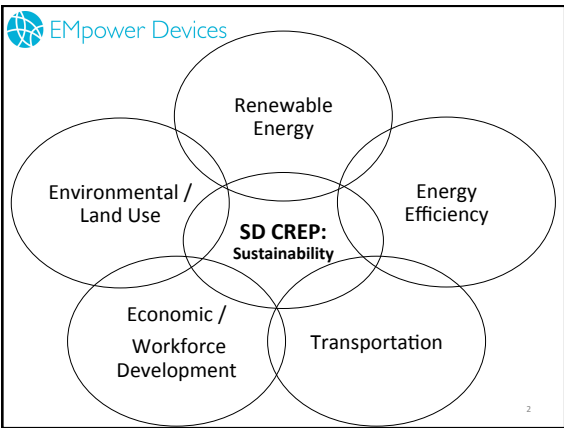

 **County of San Diego**
Comprehensive Renewable Energy Plan (CREP)
Technical Advisory Committee (TAC)

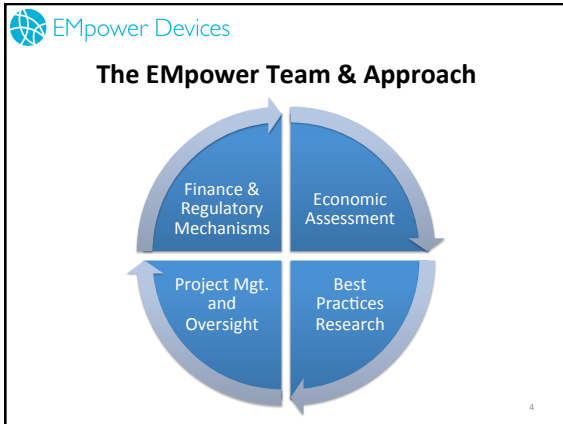
October 2, 2014



 **SD CREP Phase One Framework**

- Identify the best programs, policies, and financial and regulatory mechanisms, and
- Match best practices with potential economic scenarios for the County, to:
 - Boost the County's energy capacity and economic productivity

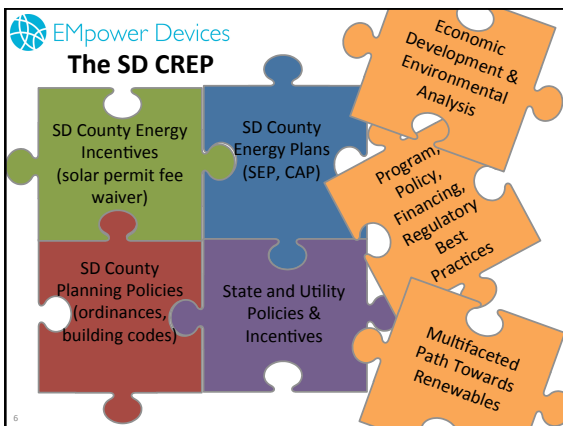
3




Related Work

- Mid-Ohio Regional Renewable Energy Action Plan (REAP)
- Third Industrial Revolution Master Plan Nord-Pas de Calais, France

5




 **Research Approach**

Methodology

- Primary and secondary materials
- Stakeholder interviews
- Economic development and analysis

7

 **Best Practices Sources**

- National Asscs.**
 - National Association of Counties
 - U.S. Conference of Mayors
 - National Association of Regional Councils
- CA Local Gov. Asscs.**
 - California State Association of Counties
 - California County Planning Directors Association
 - Local Government Commission
- CA Local Govs.**
 - Counties of Sonoma, Yolo, Alameda, Napa, San Joaquin, Imperial, Riverside and Los Angeles
 - Cities of Los Angeles, Chula Vista, San Francisco, Irvine, San Diego
- NGOs/Local Experts**
 - (California) Center for Sustainable Energy
 - Center for Biological Diversity (San Francisco)
 - Interstate Renewable Energy Council

8

 **Research Approach**

Methodology

- Primary and secondary materials
- Stakeholder interviews
- Economic development and analysis

Multidisciplinary Framework

- Environmental and Economic Context
- Local, State, National, and International Best Practices
- Financial and Regulatory Mechanisms
- “Open Architecture” Approach

9



An Open Architecture Approach

- Modular and agile for short and long-term
- Flexibility for available and future opportunities
- Map out range of cost-effective solutions



10



An Iterative Process

Simultaneously, we are:

- Reviewing the County's past energy actions
- Identifying related local issues
- Mapping economic scenarios
- Researching best practices from across the country
- Analyzing economic potential

11



County Board Actions



12


EMpower Devices
County Board Actions

- 2011**
 - General Plan Update
 - Amended building and energy codes
- 2012**
 - Climate Action Plan
- 2013**
 - Wind Energy Ordinance
 - SD CREP
 - Strategic Energy Plan 2013-2014
- 2014**
 - San Diego County Building Code
 - An Update to Strategic Energy Plan 2013-2014

13

EMpower Devices
Identifying Local Issues and Priorities


- Environmental protection
- Land use
- Job creation and economic development
- Regional equity
- Healthy communities
- Others?



14

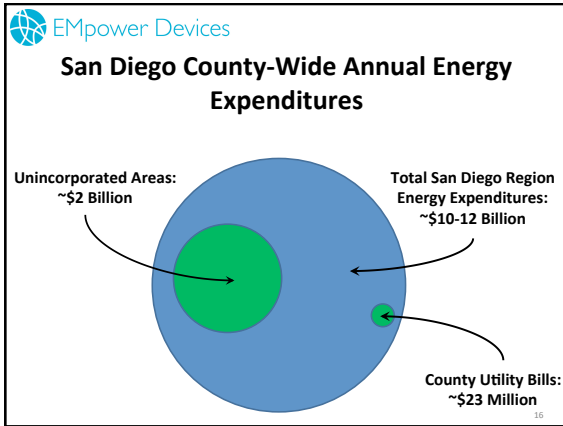
EMpower Devices
SD CREP Economic Scenarios

- Determine an Optimal Array of:**
 - Energy Resources
 - Conventional Energy
 - Renewable Energy
 - Energy Efficiency
 - Investment
 - Workforce
- Develop a Smart Mix of:**
 - Policies
 - Programs
 - Best Practices
- Achieve County Goals**
 - Energy Efficiency/ Sustainability
 - Employment/Workforce Development
 - Future Economic Development



4. Ongoing Assessment, Evaluation, and Adjustments

15



The Vital Link Between Energy and the County's Well-Being

Current Situation:

- Energy expenditure ~\$10-12 billion per year
- Expected to grow over time

Likely Results of Status Quo:

- Constrained and less resilient economic activity:
 - Sluggish rate of investments in renewable energy technologies
 - Lagging rate of efficiency improvements

17

The Vital Link Between Energy and the County's Well-Being


Solution:

- Redirect investments and spending flows into more productive uses

Likely Results:

- Increased energy efficiency and sustainability
- More robust, sustainable economic activity
- Greater local job creation


18

 **EMpower Devices**

Best Practices Evaluation Criteria

- **County Target Sector**
 - Residential
 - Commercial
 - Industrial
 - Utility
 - Transportation
- **Cost Data**
- **Start-up Time**
 - Formulation
 - Implementation
- **Lead Implementer**
 - Department
 - Contractor
- **Schedule Impact(s)/When?**
- **Specific Impacts/Benefits**
 - Energy, cost, and time savings
 - Fuel diversity
 - Economic development
- **Other Jurisdictional Examples**
- **Key Partners and Players**
- **Pros and Cons**


19

 **EMpower Devices**

Best Practice Categories

Workforce Development Employer-Driven Programs	Financial Mechanisms PACE Tax Alternatives	County Operations Dedicated Staff to RE & Sustainability
Public-Private Partnerships Community Solar	Regulatory Mechanisms Solar/Wind Ordinances CCA/DA	Education/Outreach County Website NGO Resources

20

 **EMpower Devices**

Ultimately, we are:

- Identifying the best programs, policies, and financial and regulatory mechanisms, and
- Matching these best practices with potential economic scenarios for the County, to:
 - Boost the County's energy capacity and economic productivity

21

