

Total Capacity of
the General Plan

- MAP "A" -

County of San Diego

North Mountain

This map is an estimate of the number of existing and future dwelling units allowed for the unincorporated area. Total capacity may not be built and requires permits. Site constraints such as animal habitats, steep slopes, and flood areas may reduce the total capacity.

2011 General Plan
Allowed
DWELLING UNITS

2,398

Dwelling Units

(+)

- 1 - 25
- 26 - 50
- 51 - 75
- 76 - 100
- > 100

County Water Authority Boundary

Community Plan Areas

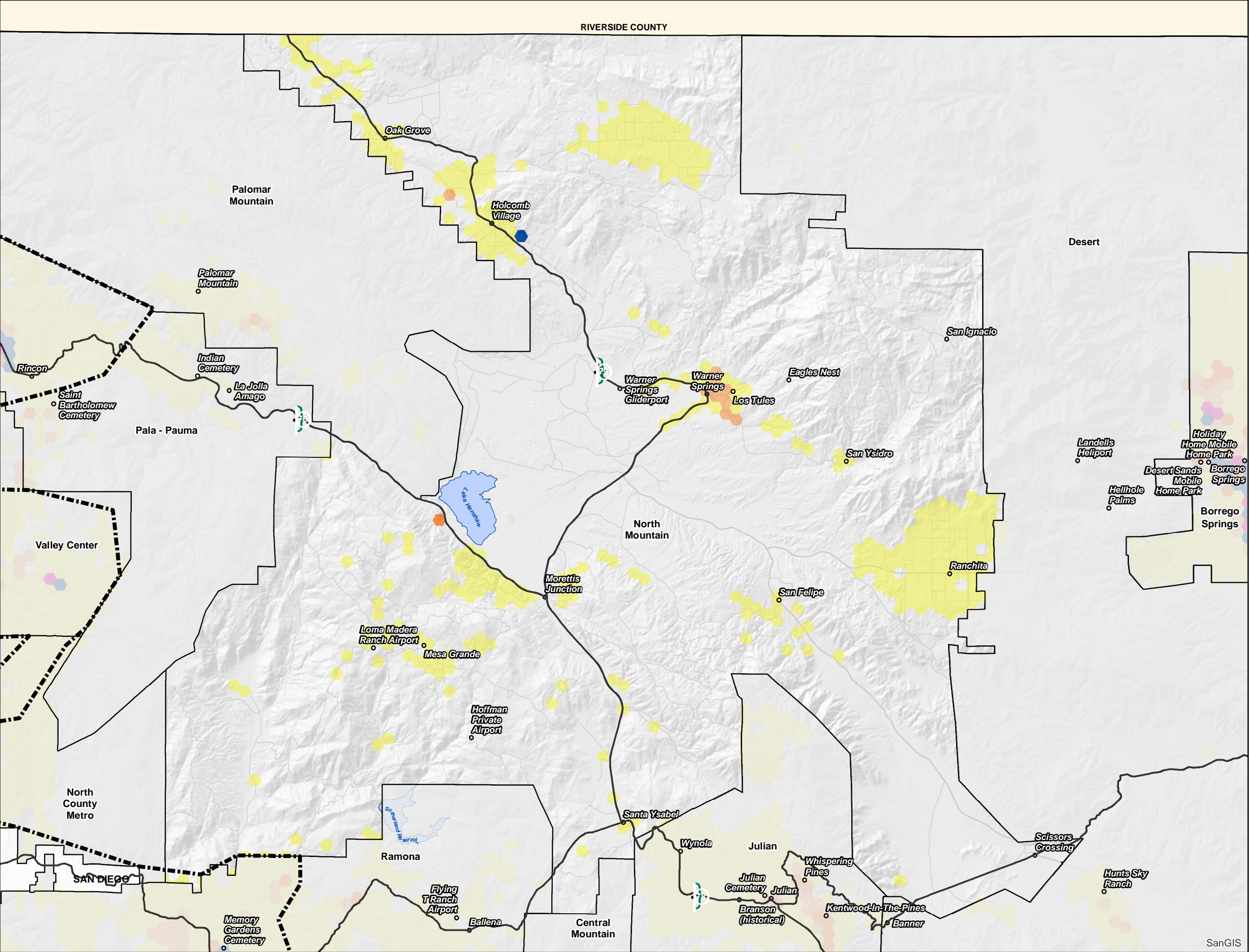
Incorporated Areas

0 1.75 3.5 Miles

Minimum Mapping Unit (hexbin) = 60 acres



THIS MAP/DATA IS PROVIDED WITHOUT WARRANTY OF ANY KIND, EITHER EXPRESS OR IMPLIED, INCLUDING BUT NOT LIMITED TO, THE IMPLIED WARRANTIES OF MERCHANTABILITY AND FITNESS FOR A PARTICULAR PURPOSE. Note: This product may contain information from the SANDAG Regional Information System which cannot be reproduced without the written permission of SANDAG. Copyright SanGIS 2018 - All Rights Reserved.



Annexations,
Acquisitions &
Conservation
Programs
- MAP "B" -
County of San Diego
North Mountain

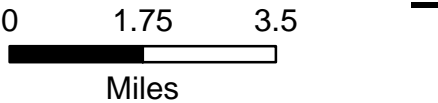
This map shows the estimated reduction in the General Planning dwelling unit capacity since 2011. These reductions are due to annexations of land by surrounding cities, land acquisitions by State, Federal, or Tribal entities, and conservation programs.

Capacity
Loss
DWELLING UNITS
-220

Dwelling Units

- (-)
- 1 - 25
 - 26 - 50
 - 51 - 75
 - 76 - 100
 - > 100

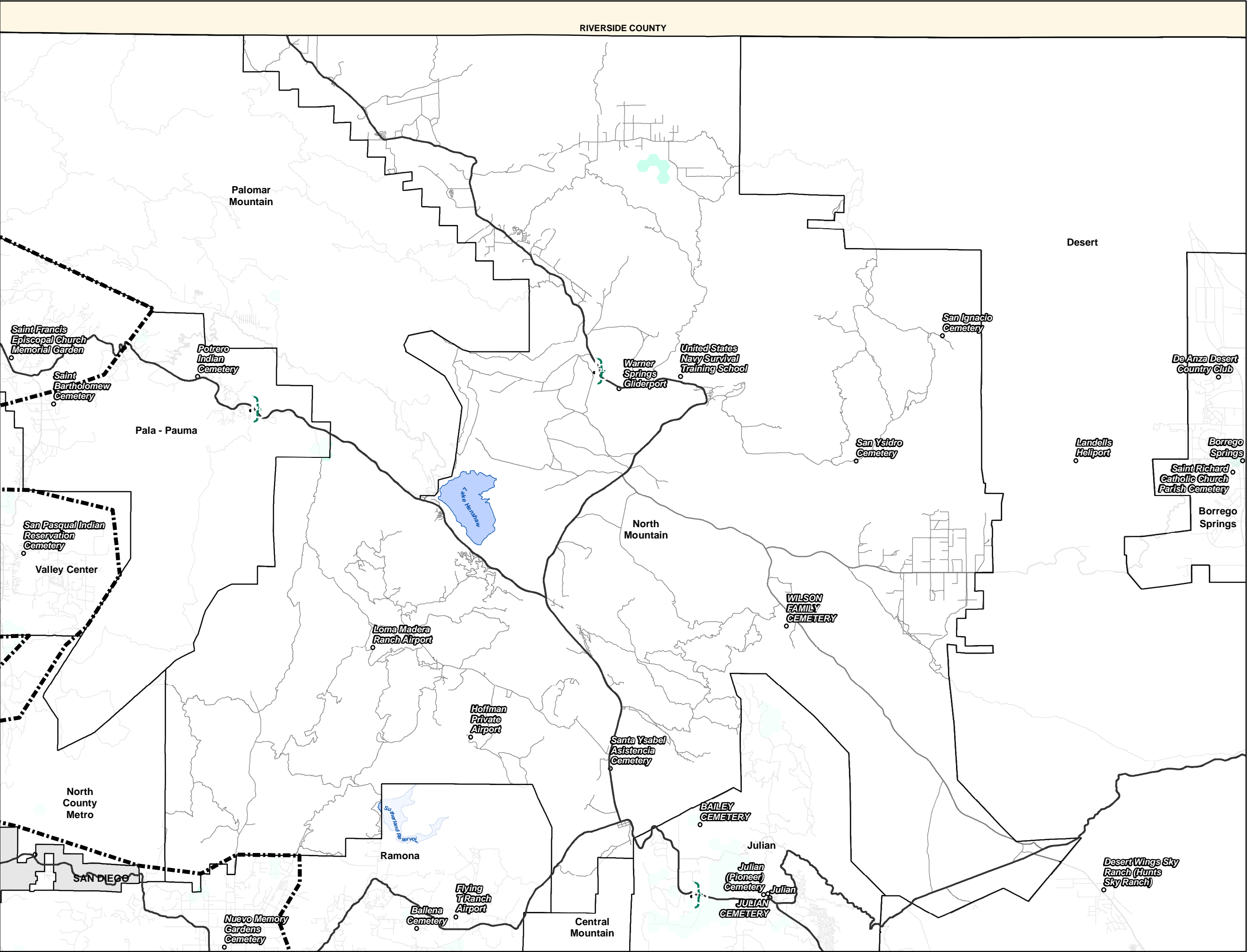
- County Water Authority Boundary
- Community Plan Areas
- Incorporated Areas



Minimum Mapping Unit (hexbin) = 60 acres



THIS MAP/DATA IS PROVIDED WITHOUT WARRANTY OF ANY KIND, EITHER EXPRESS OR IMPLIED, INCLUDING BUT NOT LIMITED TO, THE IMPLIED WARRANTIES OF MERCHANTABILITY AND FITNESS FOR A PARTICULAR PURPOSE. Note: This product may contain information from the SANDAG Regional Information System which cannot be reproduced without the written permission of SANDAG. Copyright SanGIS 2018 - All Rights Reserved.



Changes to the General Plan Capacity - MAP "C" - County of San Diego North Mountain

This map is an estimate of the net increase or decrease to the total residential capacity since 2011. Total capacity may not be built and requires permits. Site constraints such as animal habitats, steep slopes, and flood areas may reduce the total capacity.

Approved by General Plan Amendments
DWELLING UNITS
25

Dwelling Units

(+)

(-)

1-25

26-50

51-75

76-100

> 100

County Water Authority Boundary

Community Plan Areas

Incorporated Areas

0

1.75

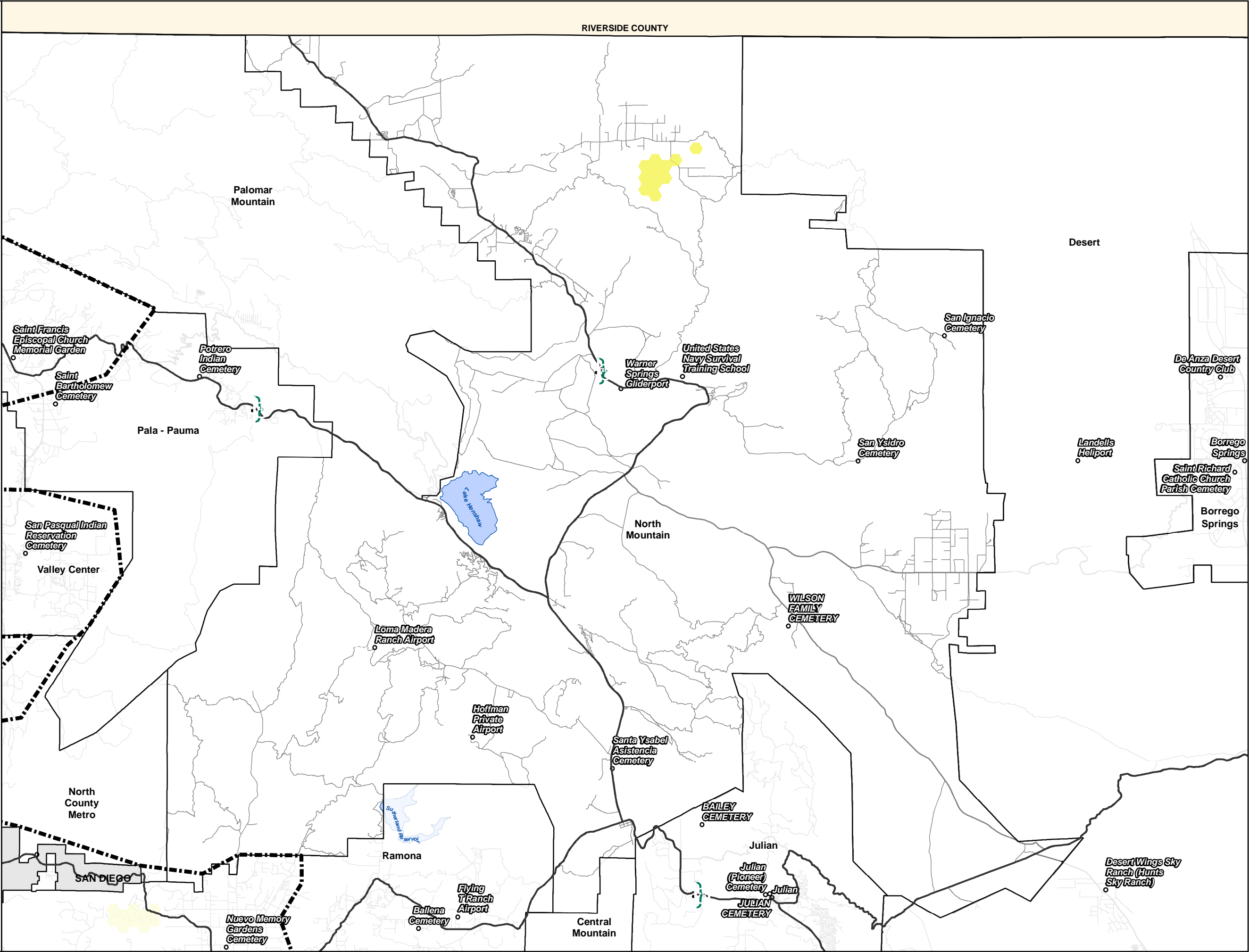
3.5

Miles

Minimum Mapping Unit (hexbin) = 60 acres



THIS MAP/DATA IS PROVIDED WITHOUT WARRANTY OF ANY KIND, EITHER EXPRESS OR IMPLIED, INCLUDING BUT NOT LIMITED TO, THE IMPLIED WARRANTIES OF MERCHANTABILITY AND FITNESS FOR A PARTICULAR PURPOSE. Note: This product may contain information from the SANDAG Regional Information System which cannot be reproduced without the written permission of SANDAG. Copyright SanGIS 2018 - All Rights Reserved.



Existing Dwelling Units

- MAP "D" -

County of San Diego
North Mountain

This map shows the estimated number of existing dwelling units in the unincorporated county of San Diego.

Existing
Total
DWELLING UNITS

1,281

Dwelling Units

(+)

- 1 -25
- 26 -50
- 51 -75
- 76 -100
- > 100

County Water
Authority Boundary

Community Plan Areas

Incorporated Areas

0 1.75 3.5

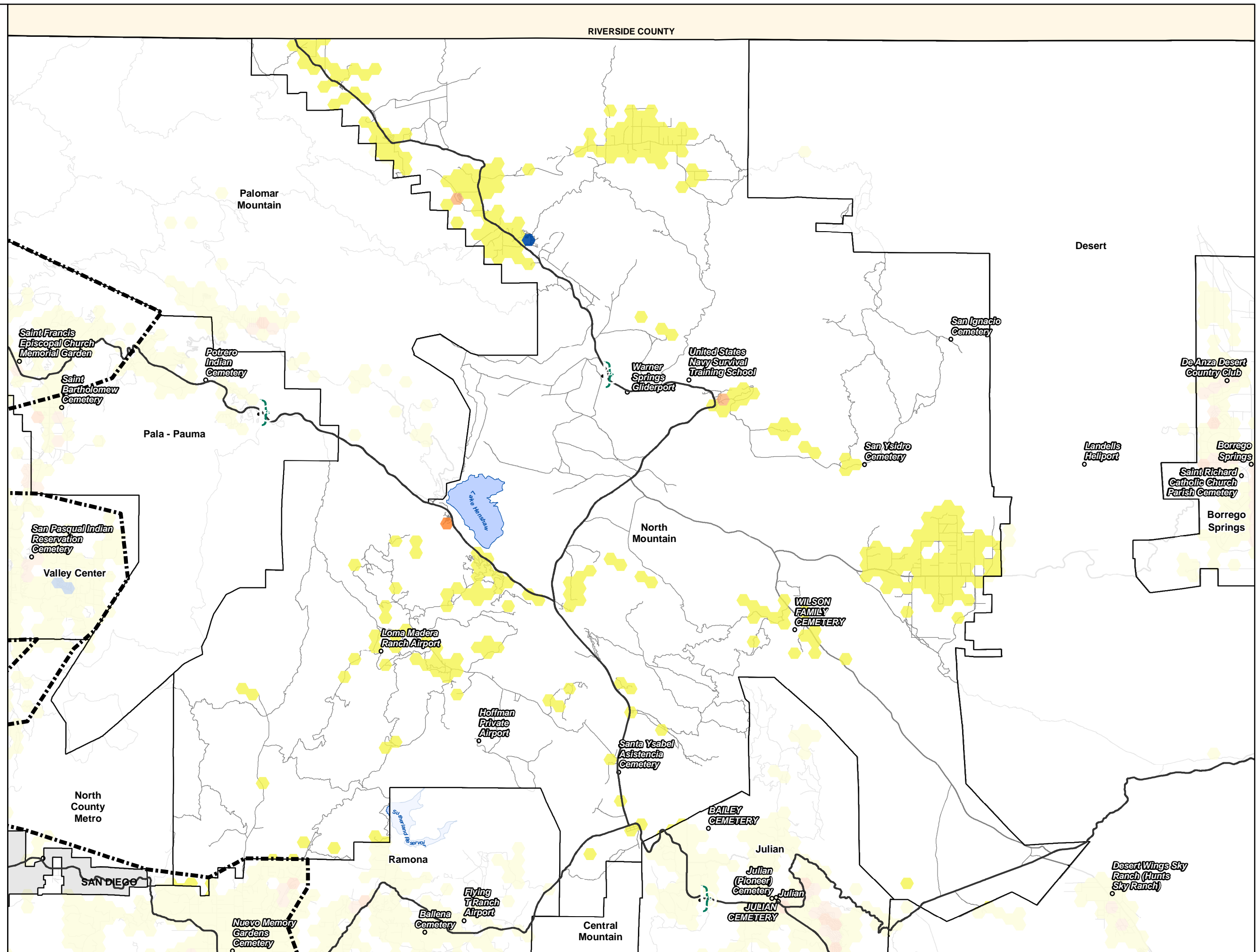
Miles

Minimum Mapping Unit (hexbin) = 60 acres

LUEG GIS

THIS MAP/DATA IS PROVIDED WITHOUT WARRANTY OF ANY KIND, EITHER EXPRESS OR IMPLIED, INCLUDING BUT NOT LIMITED TO, THE IMPLIED WARRANTIES OF MERCHANTABILITY AND FITNESS FOR A PARTICULAR PURPOSE. Note: This product may contain information from the SANDAG Regional Information System which cannot be reproduced without the written permission of SANDAG. Copyright SanGIS 2018 - All Rights Reserved.

P:\20180510_development_tracker\PRODIMXDs_to_Generate_PDFs\MAP_03_DT.mxd



This map is an estimate intended for discussion purposes only. This map is a representation of permitting data extracted from the County of San Diego Planning and Development Services Accela database on

09/25/2021.

Published: 11/24/2021

Dwelling units with Completed Building Permits

- MAP "E" -

County of San Diego

North Mountain

This map shows the total number of dwelling units built in the unincorporated areas of San Diego County since 2011.

Completed Building Permit

DWELLING UNITS

34

Dwelling Units

(+)

1 - 25
26 - 50
51 - 75
76 - 100
> 100

County Water Authority Boundary

Community Plan Areas

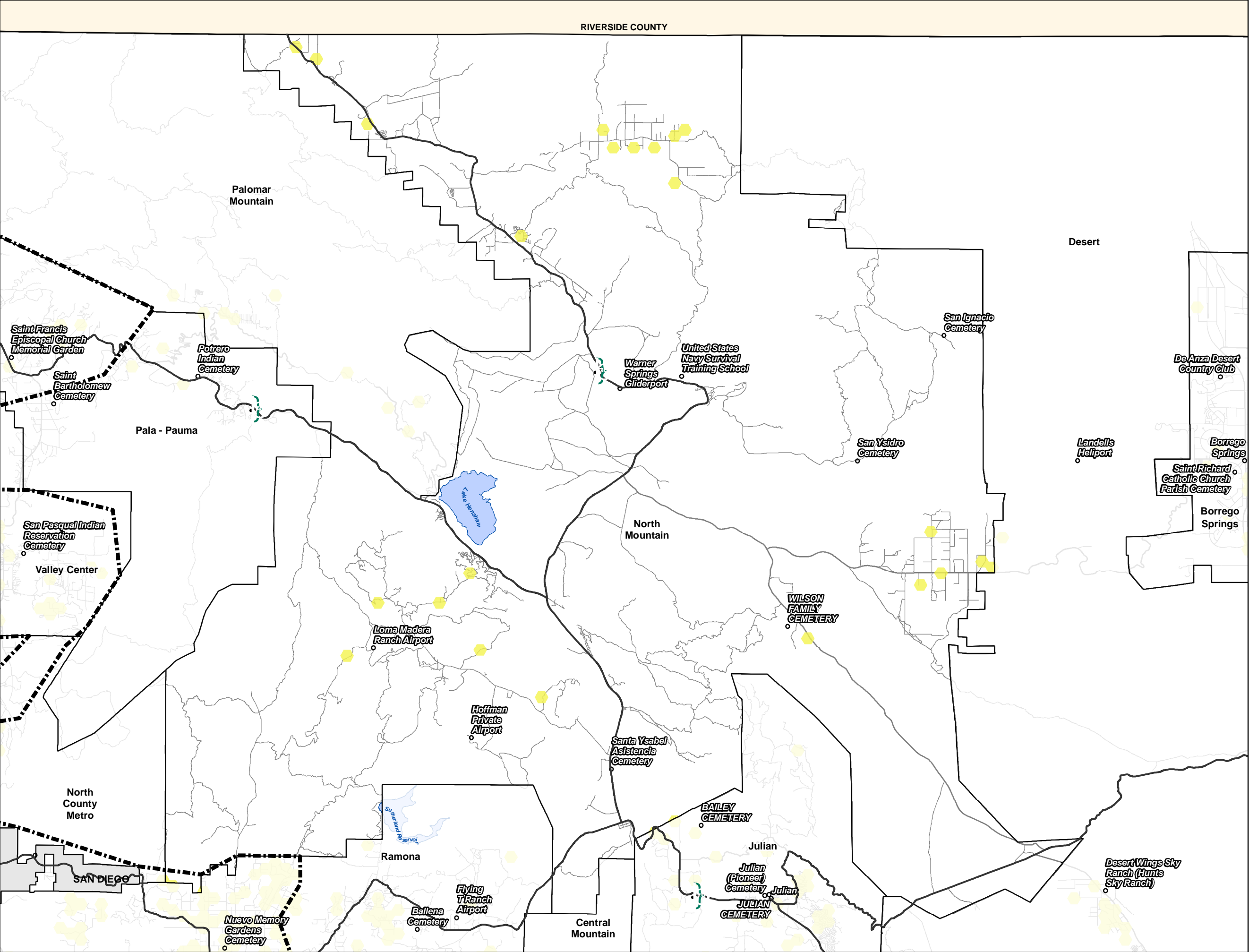
Incorporated Areas

0 1.75 3.5 Miles

Minimum Mapping Unit (hexbin) = 60 acres



THIS MAP/DATA IS PROVIDED WITHOUT WARRANTY OF ANY KIND, EITHER EXPRESS OR IMPLIED, INCLUDING BUT NOT LIMITED TO, THE IMPLIED WARRANTIES OF MERCHANTABILITY AND FITNESS FOR A PARTICULAR PURPOSE. Note: This product may contain information from the SANDAG Regional Information System which cannot be reproduced without the written permission of SANDAG. Copyright SanGIS 2018 - All Rights Reserved.



County of San Diego
North Mountain

**Approved
Discretionary Projects
DWELLING UNITS**

0

(+)

1 -25

26 -50

51 -75

76 -100

> 100

**County Water
Authority Boundary**

Community Plan Areas

Incorporated Areas

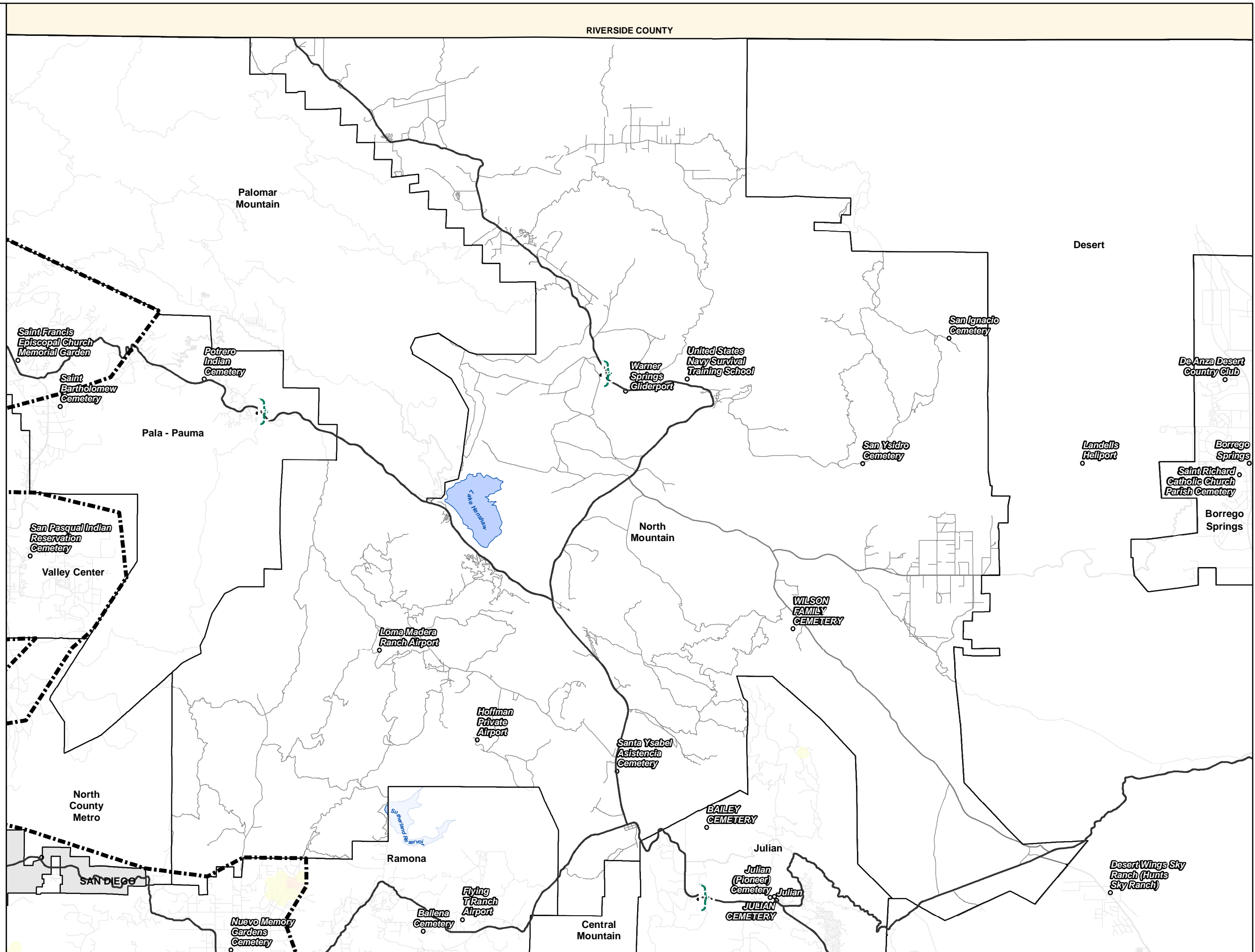
0 1.75 3.5

Miles

Minimum Mapping Unit (hexbin) = 60 acres



THIS MAP/DATA IS PROVIDED WITHOUT WARRANTY OF ANY KIND, EITHER EXPRESS OR IMPLIED, INCLUDING BUT NOT LIMITED TO, THE IMPLIED WARRANTIES OF MERCHANTABILITY AND FITNESS FOR A PARTICULAR PURPOSE. Note: This product may contain information from the SANDAG Regional Information System which cannot be reproduced without the written permission of SANDAG. Copyright SanGIS 2018 - All Rights Reserved.



Available Capacity
of the General Plan

- MAP "G" -

County of San Diego

North Mountain

This map shows the estimated number of dwelling units that could be built based on the total residential capacity of the General Plan. Construction of these units requires site-specific analysis, permits, and possibly infrastructure improvements.

Current Remaining
Development Potential
DWELLING UNITS

956

Dwelling Units

(+)	
1 -25	
26 -50	
51 -75	
76 -100	
> 100	

County Water Authority Boundary

Community Plan Areas

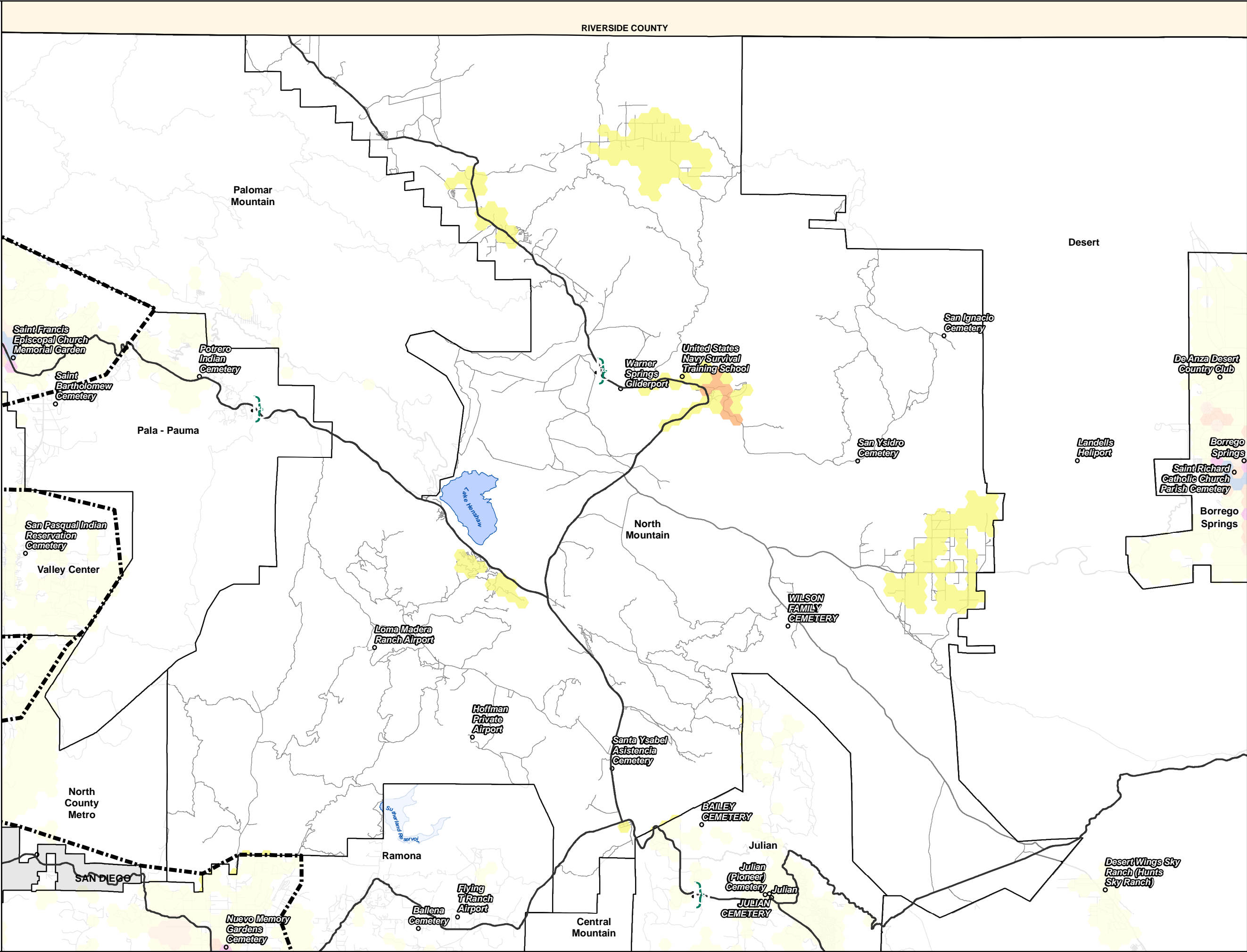
Incorporated Areas

0 1.75 3.5 Miles

Minimum Mapping Unit (hexbin) = 60 acres



THIS MAP/DATA IS PROVIDED WITHOUT WARRANTY OF ANY KIND, EITHER EXPRESS OR IMPLIED, INCLUDING BUT NOT LIMITED TO, THE IMPLIED WARRANTIES OF MERCHANTABILITY AND FITNESS FOR A PARTICULAR PURPOSE. Note: This product may contain information from the SANDAG Regional Information System which cannot be reproduced without the written permission of SANDAG. Copyright SanGIS 2018 - All Rights Reserved.



Changes to General
Plan Capacity
In-Process
- MAP "H" -
County of San Diego
North Mountain

This map is an estimate of the net increase or decrease in the total residential capacity of the General Plan currently under review by the County. Total capacity may not be built and requires site-specific analysis, permits, and possibly infrastructure improvements.

In-Process General Plan
Amendments
DWELLING UNITS
613

Dwelling Units

(+)		(-)
Yellow hexagon	1 -25	Light green hexagon
Orange hexagon	26 -50	Medium green hexagon
Dark orange hexagon	51 -75	Dark green hexagon
Pink hexagon	76 -100	Dark teal hexagon
Blue hexagon	> 100	Dark green hexagon

County Water Authority Boundary

Community Plan Areas

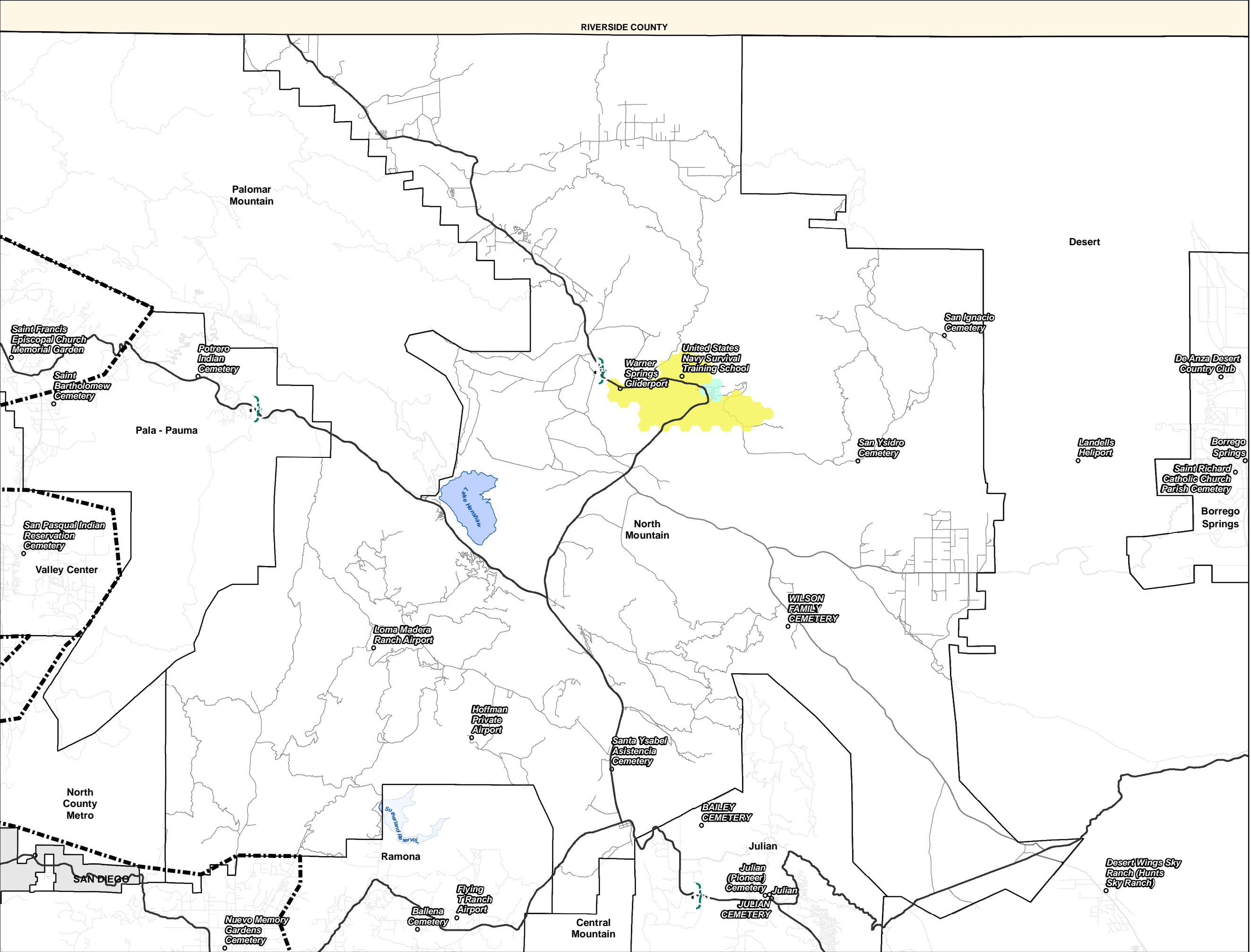
Incorporated Areas

0 1.75 3.5
Miles

Minimum Mapping Unit (hexbin) = 60 acres



THIS MAP/DATA IS PROVIDED WITHOUT WARRANTY OF ANY KIND, EITHER EXPRESS OR IMPLIED, INCLUDING BUT NOT LIMITED TO, THE IMPLIED WARRANTIES OF MERCHANTABILITY AND FITNESS FOR A PARTICULAR PURPOSE. Note: This product may contain information from the SANDAG Regional Information System which cannot be reproduced without the written permission of SANDAG. Copyright SanGIS 2018 - All Rights Reserved.



Dwelling Units In-Process

- MAP "I" -

County of San Diego

North Mountain

This map shows the total number of dwelling units that are in the process of obtaining discretionary permits. If approved, these developments may require additional permits and infrastructure improvements before construction can begin.

In-Process
Discretionary Projects
DWELLING UNITS

28

Dwelling Units

(+)

1 - 25
26 - 50
51 - 75
76 - 100
> 100

County Water Authority Boundary

Community Plan Areas

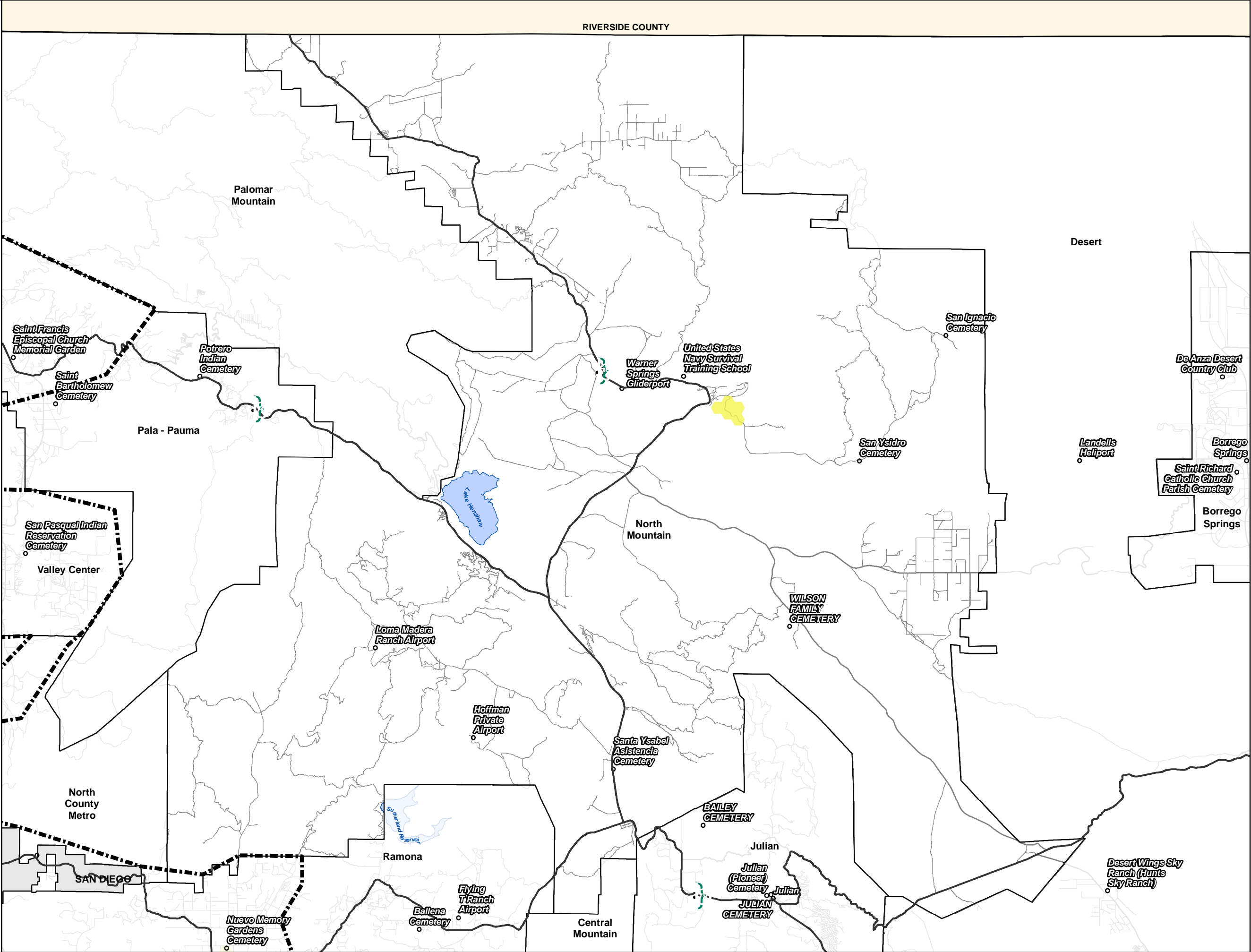
Incorporated Areas

0 1.75 3.5 Miles

Minimum Mapping Unit (hexbin) = 60 acres



THIS MAP/DATA IS PROVIDED WITHOUT WARRANTY OF ANY KIND, EITHER EXPRESS OR IMPLIED, INCLUDING BUT NOT LIMITED TO, THE IMPLIED WARRANTIES OF MERCHANTABILITY AND FITNESS FOR A PARTICULAR PURPOSE. Note: This product may contain information from the SANDAG Regional Information System which cannot be reproduced without the written permission of SANDAG. Copyright SanGIS 2018 - All Rights Reserved.



Adjusted Available Capacity of the General Plan - MAP "J" - County of San Diego North Mountain

This map shows the estimated number of dwelling units that could be built based on the total residential capacity of the General Plan. The estimate is adjusted to exclude applications for land use changes (Map H) and discretionary permits (Map I)

Future Development Potential
DWELLING UNITS
1,541

Dwelling Units

(+)	
1 -25	
26 -50	
51 -75	
76 -100	
> 100	

County Water Authority Boundary

Community Plan Areas

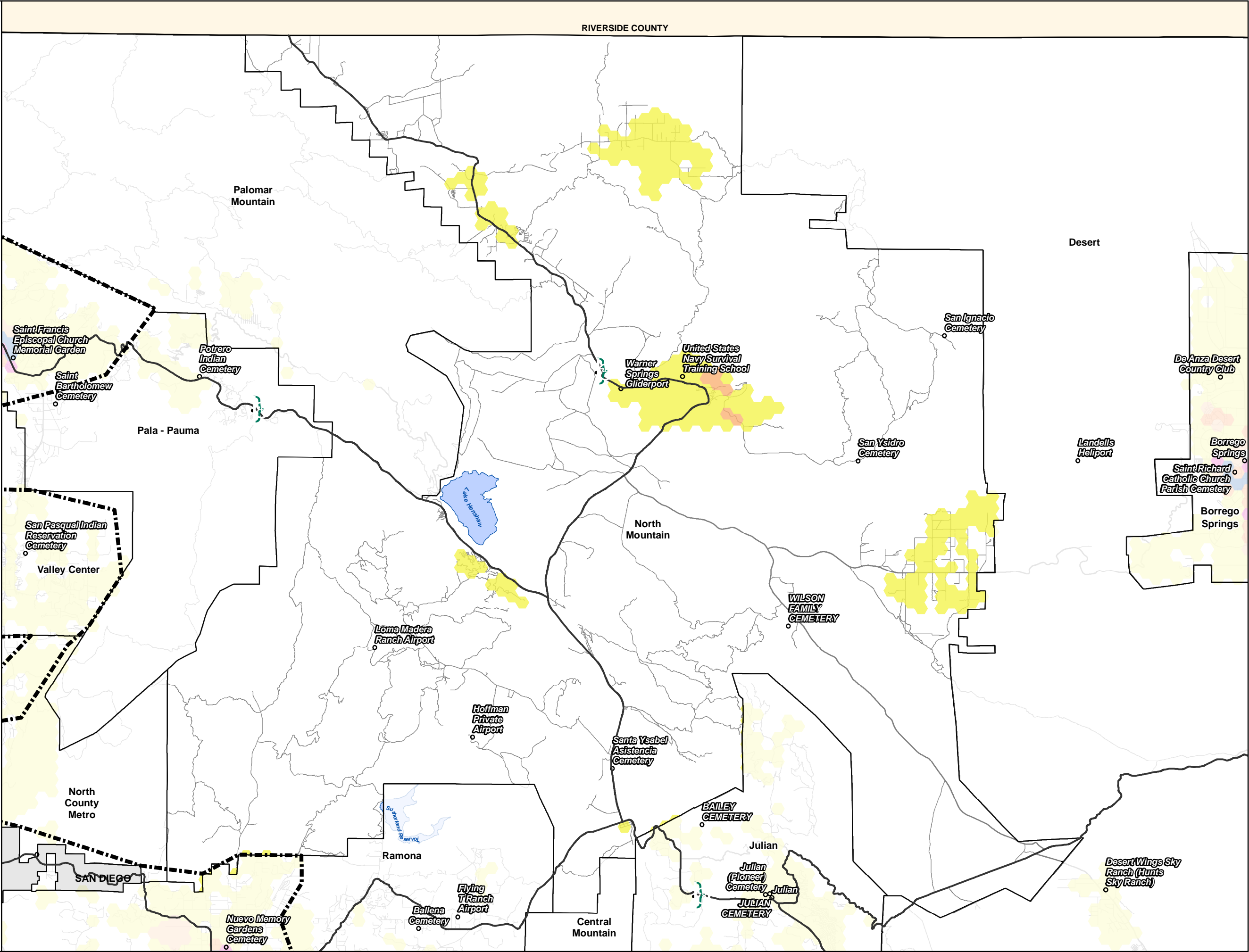
Incorporated Areas

0 1.75 3.5 Miles

Minimum Mapping Unit (hexbin) = 60 acres



THIS MAP/DATA IS PROVIDED WITHOUT WARRANTY OF ANY KIND, EITHER EXPRESS OR IMPLIED, INCLUDING BUT NOT LIMITED TO, THE IMPLIED WARRANTIES OF MERCHANTABILITY AND FITNESS FOR A PARTICULAR PURPOSE. Note: This product may contain information from the SANDAG Regional Information System which cannot be reproduced without the written permission of SANDAG. Copyright SanGIS 2018 - All Rights Reserved.



2011 General Plan
Differential
- MAP "K" -
County of San Diego
North Mountain

This map shows the estimated number of dwelling units from developments that exceed or are below the maximum number of dwelling allowed by the General Plan since 2011. The map shows results for both approved and in-process development projects.

2011 General Plan
Differential
DWELLING UNITS
-76

In-Process
DWELLING UNITS
0
ABOVE CAPACITY

Approved
DWELLING UNITS
0
ABOVE CAPACITY

76
BELOW CAPACITY

0
BELOW CAPACITY

Dwelling Units

(+)

(-)

1 -25

26 -50

51 -75

76 -100

> 100

County Water
Authority Boundary

Community Plan Areas

Incorporated Areas

0

1.75

3.5

Miles

Minimum Mapping Unit (hexbin) = 60 acres



THIS MAP/DATA IS PROVIDED WITHOUT WARRANTY OF ANY KIND, EITHER EXPRESS OR IMPLIED, INCLUDING BUT NOT LIMITED TO, THE IMPLIED WARRANTIES OF MERCHANTABILITY AND FITNESS FOR A PARTICULAR PURPOSE. Note: This product may contain information from the SANDAG Regional Information System which cannot be reproduced without the written permission of SANDAG. Copyright SanGIS 2018 - All Rights Reserved.

