

# Total Capacity of the General Plan

- MAP "A" -




County of San Diego  
San Dieguito

This map is an estimate of the number of existing and future dwelling units allowed for the unincorporated area. Total capacity may not be built and requires permits. Site constraints such as animal habitats, steep slopes, and flood areas may reduce the total capacity.

2011 General Plan  
Allowed  
DWELLING UNITS

**14,840**

## Dwelling Units

- (+)
-  1 -25
-  26 -50
-  51 -75
-  76 -100
-  > 100

 County Water Authority Boundary

 Community Plan Areas

 Incorporated Areas

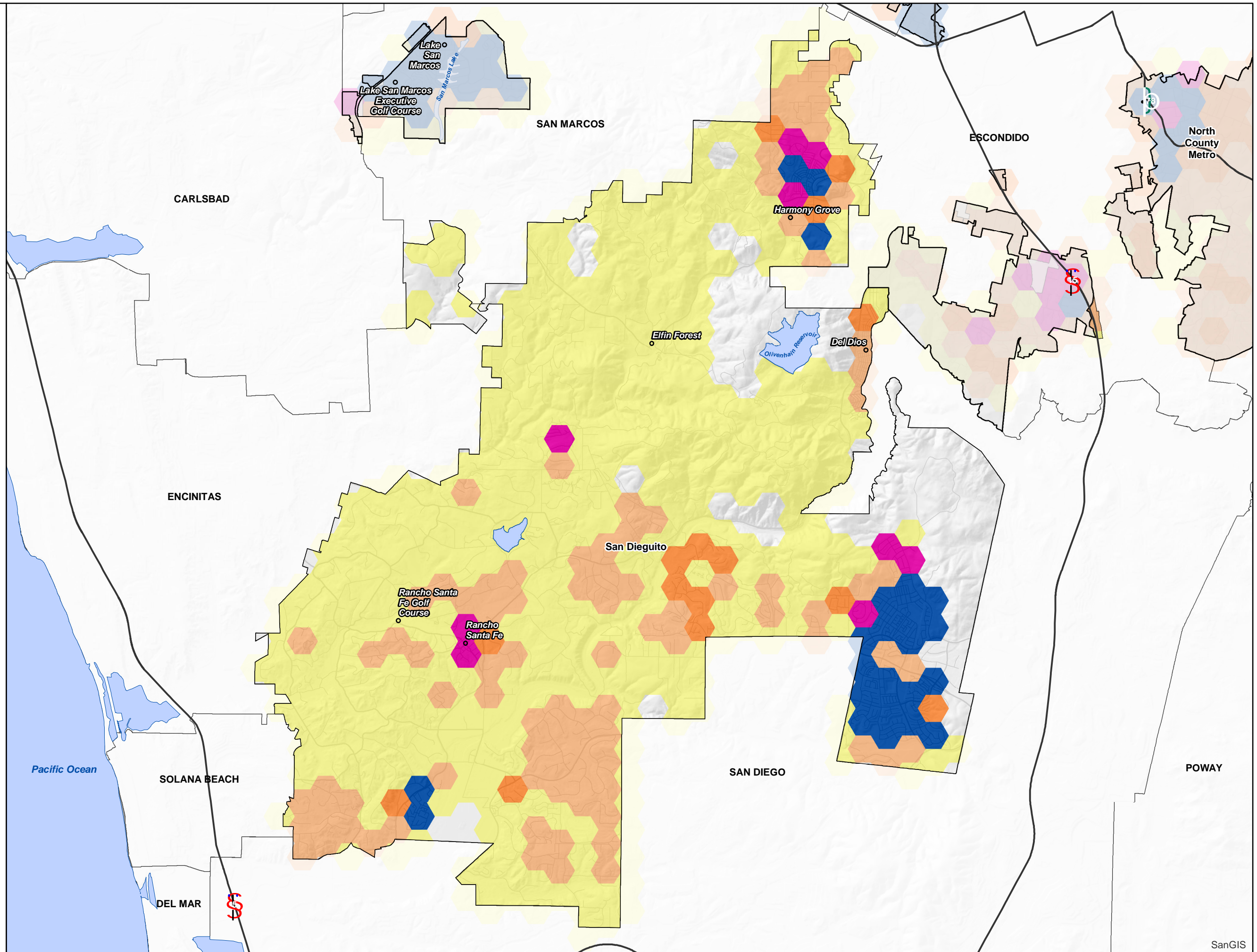
0 0.75 1.5

Miles

Minimum Mapping Unit (hexbin) = 60 acres

**LUEG GIS**

THIS MAP/DATA IS PROVIDED WITHOUT WARRANTY OF ANY KIND, EITHER EXPRESS OR IMPLIED, INCLUDING BUT NOT LIMITED TO, THE IMPLIED WARRANTIES OF MERCHANTABILITY AND FITNESS FOR A PARTICULAR PURPOSE. Note: This product may contain information from the SANDAG Regional Information System which cannot be reproduced without the written permission of SANDAG. Copyright SanGIS 2019 - All Rights Reserved.



SanGIS

Annexations,  
Acquisitions &  
Conservation  
Programs  
- MAP "B" -  
County of San Diego  
San Dieguito

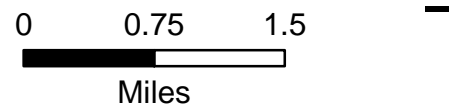
This map shows the estimated reduction in the General Planning dwelling unit capacity since 2011. These reductions are due to annexations of land by surrounding cities, land acquisitions by State, Federal, or Tribal entities, and conservation programs.

Capacity  
Loss  
DWELLING UNITS  
**-463**

Dwelling Units

- (-)
- 1 - 25
- 26 - 50
- 51 - 75
- 76 - 100
- > 100

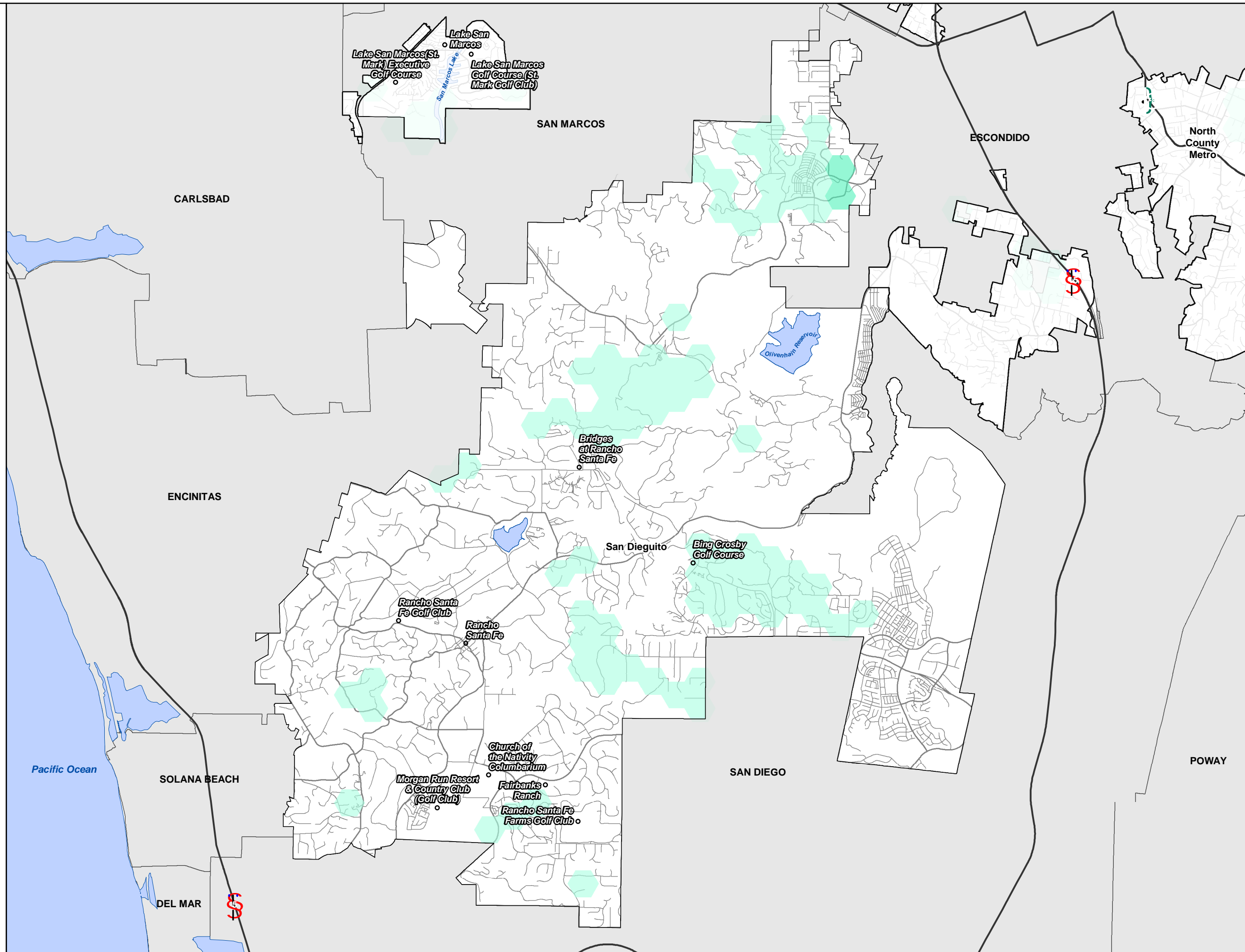
- County Water Authority Boundary
- Community Plan Areas
- Incorporated Areas



Minimum Mapping Unit (hexbin) = 60 acres



THIS MAP/DATA IS PROVIDED WITHOUT WARRANTY OF ANY KIND, EITHER EXPRESS OR IMPLIED, INCLUDING BUT NOT LIMITED TO, THE IMPLIED WARRANTIES OF MERCHANTABILITY AND FITNESS FOR A PARTICULAR PURPOSE. Note: This product may contain information from the SANDAG Regional Information System which cannot be reproduced without the written permission of SANDAG. Copyright SanGIS 2018 - All Rights Reserved.



# Changes to the General Plan Capacity

## - MAP "C" -

### County of San Diego



#### San Dieguito

This map is an estimate of the net increase or decrease to the total residential capacity since 2011. Total capacity may not be built and requires permits. Site constraints such as animal habitats, steep slopes, and flood areas may reduce the total capacity.

Approved by General Plan Amendments  
DWELLING UNITS

# 459

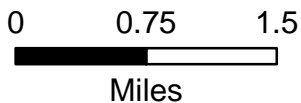
### Dwelling Units

(+)	(-)
 1-25	
 26-50	
 51-75	
 76-100	
 > 100	

 County Water Authority Boundary

 Community Plan Areas

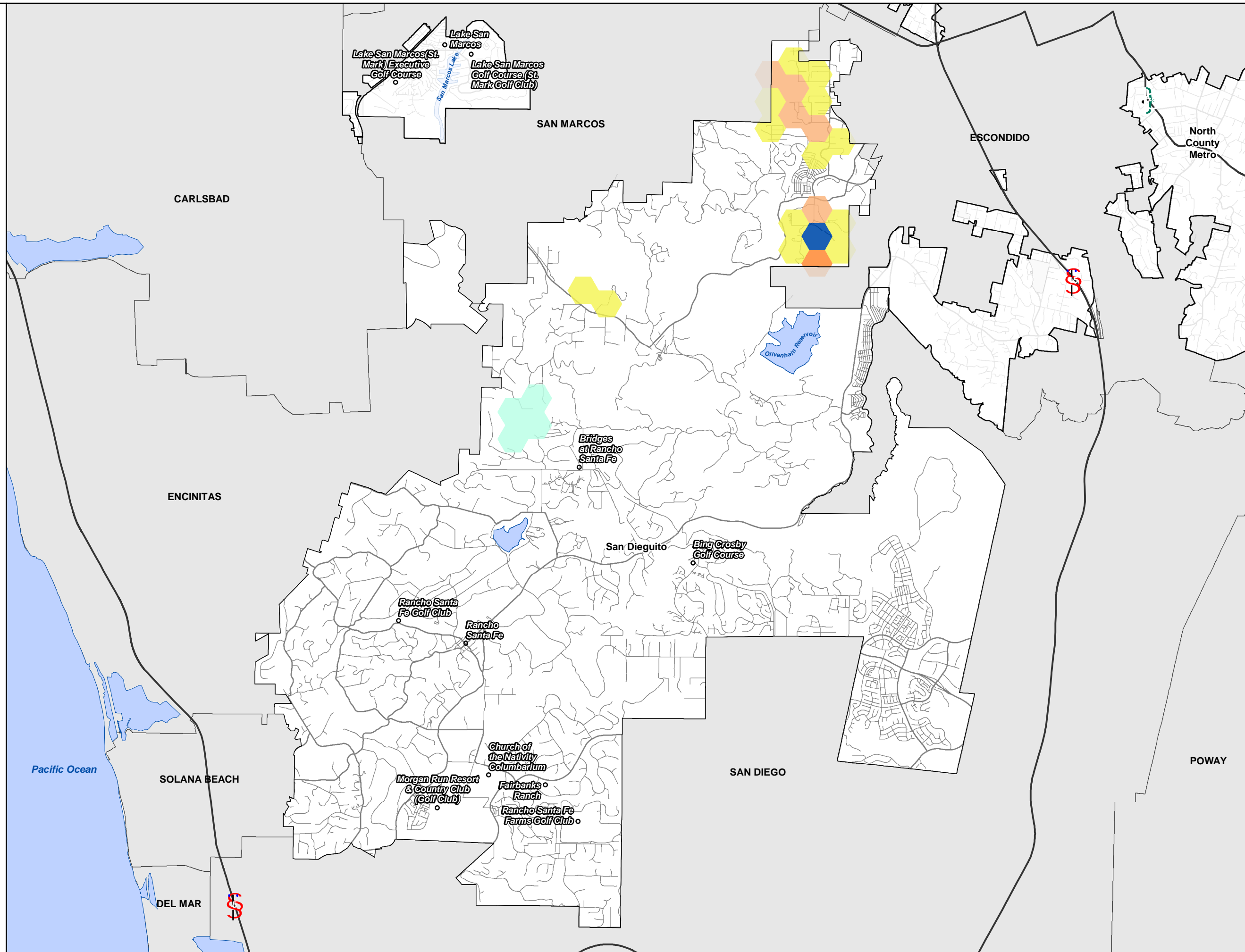
 Incorporated Areas



Minimum Mapping Unit (hexbin) = 60 acres



THIS MAP/DATA IS PROVIDED WITHOUT WARRANTY OF ANY KIND, EITHER EXPRESS OR IMPLIED, INCLUDING BUT NOT LIMITED TO, THE IMPLIED WARRANTIES OF MERCHANTABILITY AND FITNESS FOR A PARTICULAR PURPOSE. Note: This product may contain information from the SANDAG Regional Information System which cannot be reproduced without the written permission of SANDAG. Copyright SanGIS 2019 - All Rights Reserved.



# Existing Dwelling Units

- MAP "D" -

County of San Diego  
San Dieguito

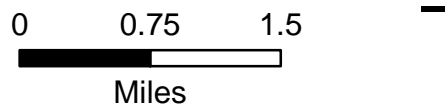
This map shows the estimated number of existing dwelling units in the unincorporated county of San Diego.

Existing Total  
DWELLING UNITS  
**13,682**

## Dwelling Units

- (+)
- 1 -25
- 26 -50
- 51 -75
- 76 -100
- > 100

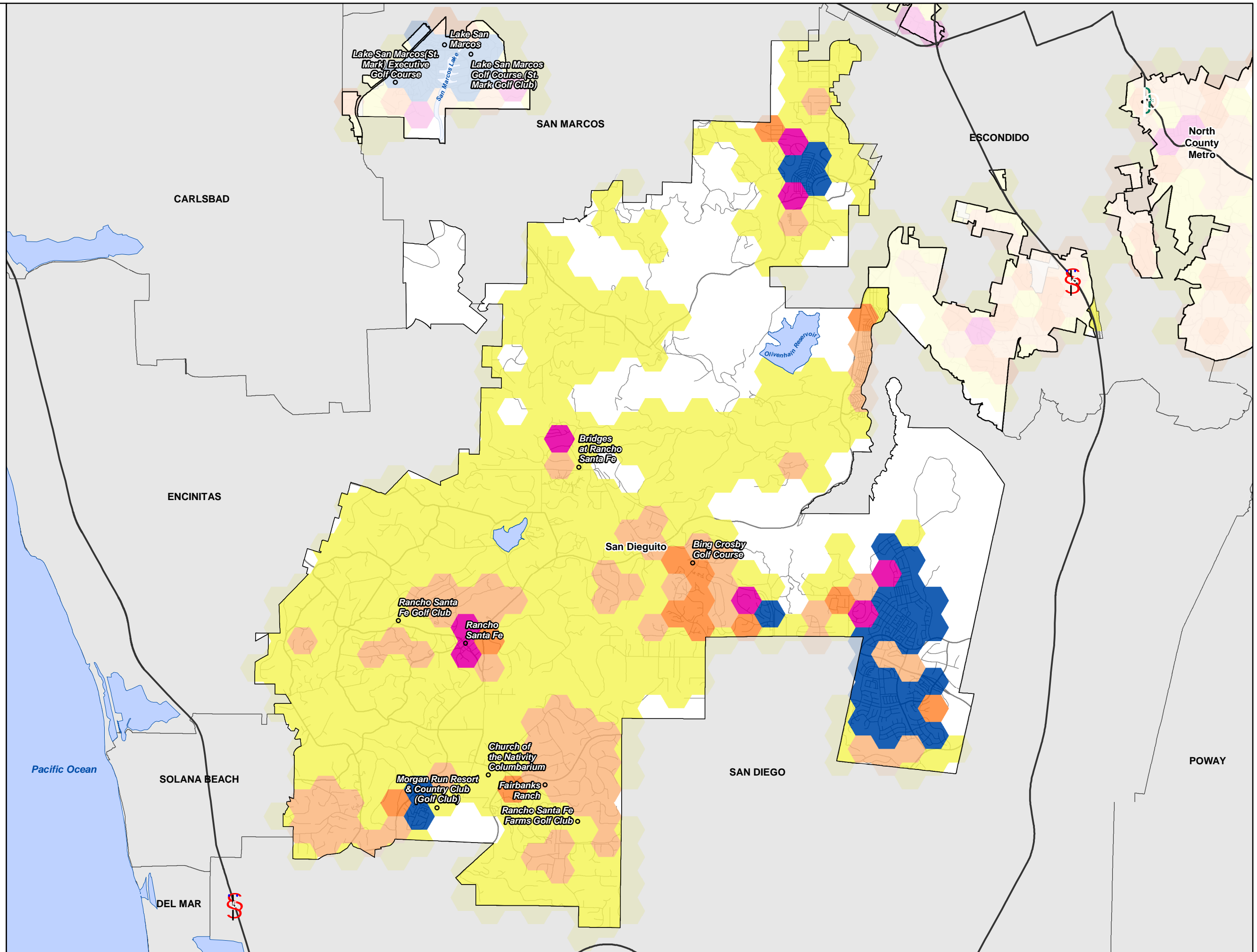
- County Water Authority Boundary
- Community Plan Areas
- Incorporated Areas



Minimum Mapping Unit (hexbin) = 60 acres



THIS MAP/DATA IS PROVIDED WITHOUT WARRANTY OF ANY KIND, EITHER EXPRESS OR IMPLIED, INCLUDING BUT NOT LIMITED TO, THE IMPLIED WARRANTIES OF MERCHANTABILITY AND FITNESS FOR A PARTICULAR PURPOSE. Note: This product may contain information from the SANDAG Regional Information System which cannot be reproduced without the written permission of SANDAG. Copyright SanGIS 2019 - All Rights Reserved.








Dwelling units with Completed Building Permits  
 - MAP "E" -  
 County of San Diego  
 San Dieguito




This map shows the total number of dwelling units built in the unincorporated areas of San Diego County since 2011.

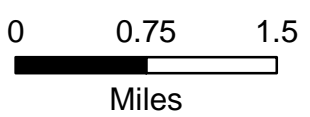
Completed Building Permit  
 DWELLING UNITS

**1,812**

Dwelling Units

- (+)
-  1 -25
-  26 -50
-  51 -75
-  76 -100
-  > 100

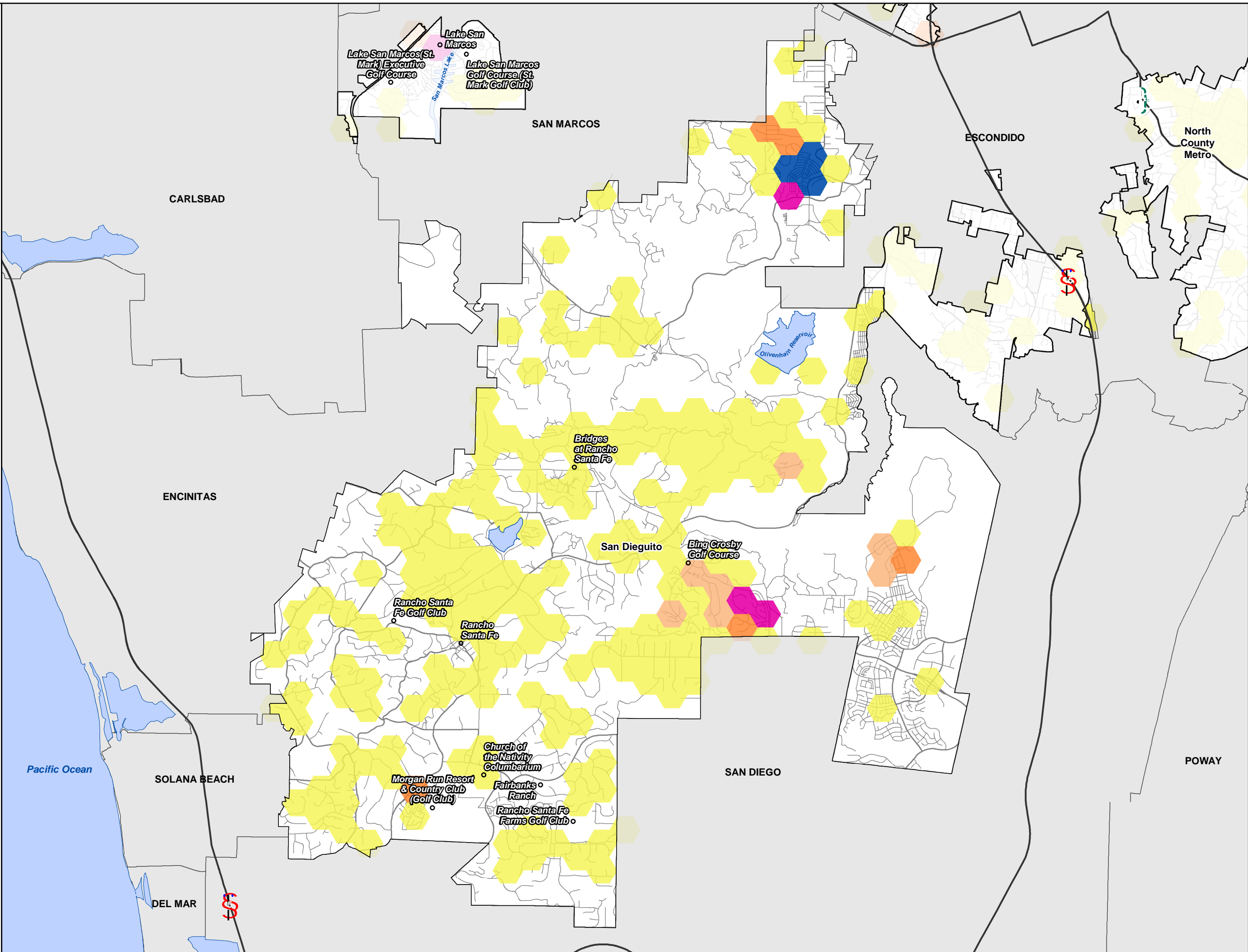
-  County Water Authority Boundary
-  Community Plan Areas
-  Incorporated Areas



Minimum Mapping Unit (hexbin) = 60 acres



THIS MAP/DATA IS PROVIDED WITHOUT WARRANTY OF ANY KIND, EITHER EXPRESS OR IMPLIED, INCLUDING BUT NOT LIMITED TO, THE IMPLIED WARRANTIES OF MERCHANTABILITY AND FITNESS FOR A PARTICULAR PURPOSE. Note: This product may contain information from the SANDAG Regional Information System which cannot be reproduced without the written permission of SANDAG. Copyright SanGIS 2019 - All Rights Reserved.



Dwelling Units with  
Approved  
Discretionary  
Permits  
- MAP "F" -  
County of San Diego  
San Dieguito






This map shows the total number of dwelling units approved by the County as part of a residential development requiring a discretionary permit. These developments may require additional permits and infrastructure improvements before construction can begin.

Approved  
Discretionary Projects  
DWELLING UNITS

**947**

Dwelling Units

(+)

-  1 -25
-  26 -50
-  51 -75
-  76 -100
-  > 100

 County Water Authority Boundary

 Community Plan Areas

 Incorporated Areas

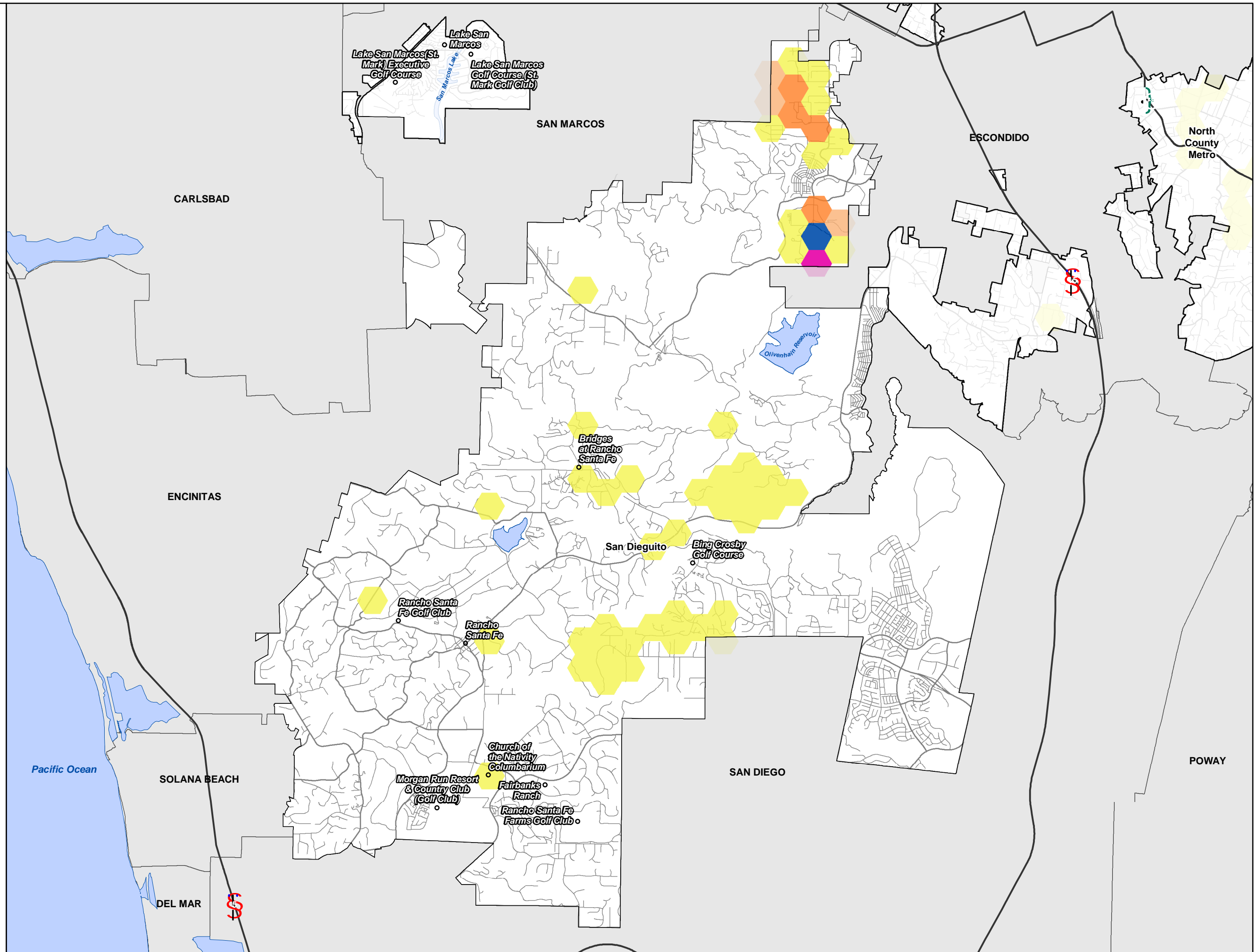
0 0.75 1.5

Miles

Minimum Mapping Unit (hexbin) = 60 acres

**LUEG GIS**

THIS MAP/DATA IS PROVIDED WITHOUT WARRANTY OF ANY KIND, EITHER EXPRESS OR IMPLIED, INCLUDING BUT NOT LIMITED TO, THE IMPLIED WARRANTIES OF MERCHANTABILITY AND FITNESS FOR A PARTICULAR PURPOSE. Note: This product may contain information from the SANDAG Regional Information System which cannot be reproduced without the written permission of SANDAG. Copyright SanGIS 2019 - All Rights Reserved.








Available Capacity  
of the General Plan  
- MAP "G" -  
County of San Diego  
San Dieguito




This map shows the estimated number of dwelling units that could be built based on the total residential capacity of the General Plan. Construction of these units requires site-specific analysis, permits, and possibly infrastructure improvements.

Current Remaining  
Development Potential  
DWELLING UNITS

**2,019**

Dwelling Units

- (+)
-  1 -25
-  26 -50
-  51 -75
-  76 -100
-  > 100

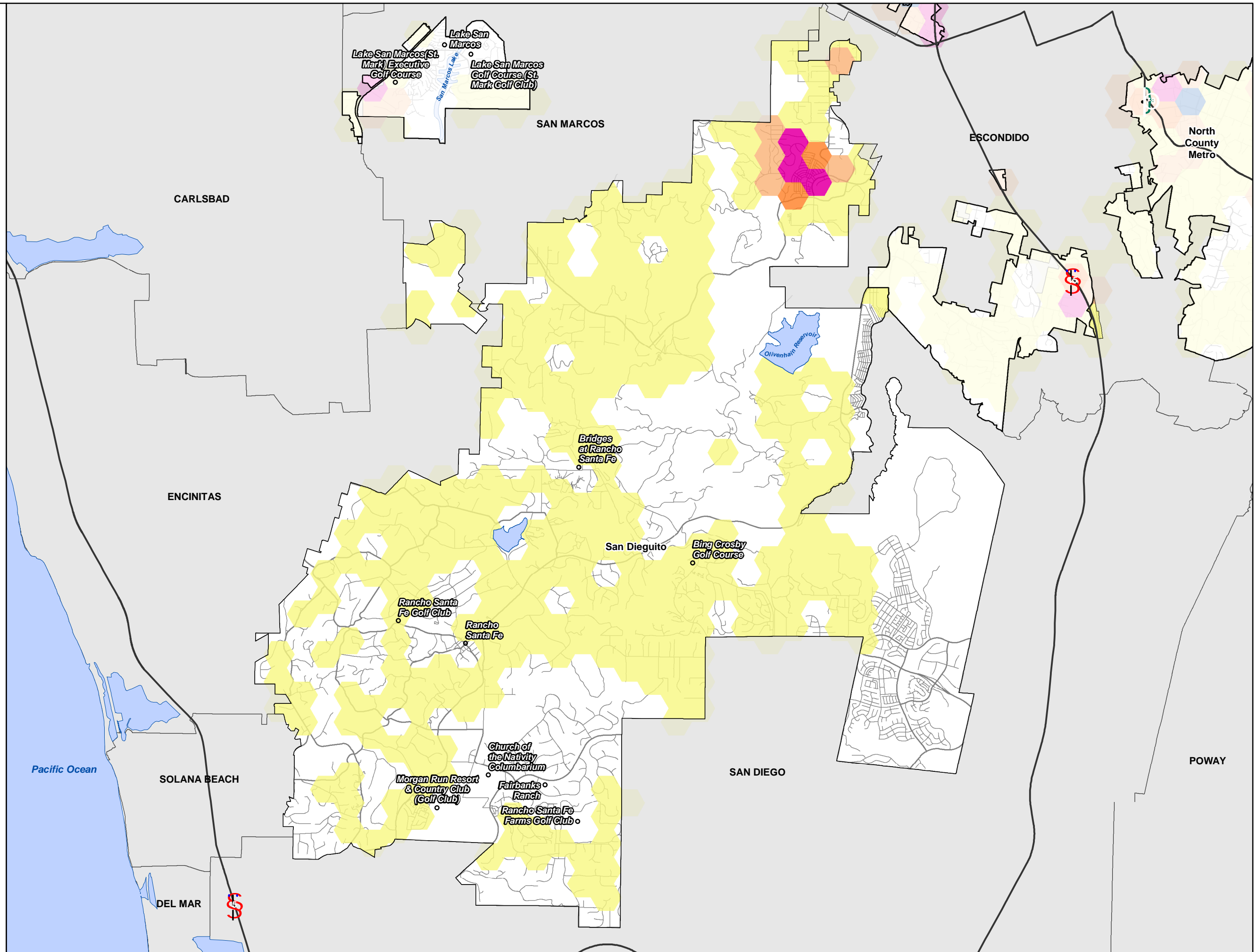
-  County Water Authority Boundary
-  Community Plan Areas
-  Incorporated Areas

0 0.75 1.5  
Miles

Minimum Mapping Unit (hexbin) = 60 acres



THIS MAP/DATA IS PROVIDED WITHOUT WARRANTY OF ANY KIND, EITHER EXPRESS OR IMPLIED, INCLUDING BUT NOT LIMITED TO, THE IMPLIED WARRANTIES OF MERCHANTABILITY AND FITNESS FOR A PARTICULAR PURPOSE. Note: This product may contain information from the SANDAG Regional Information System which cannot be reproduced without the written permission of SANDAG. Copyright SanGIS 2019 - All Rights Reserved.



# Changes to General Plan Capacity In-Process

- MAP "H" -  
County of San Diego  
San Dieguito

This map is an estimate of the net increase or decrease in the total residential capacity of the General Plan currently under review by the County. Total capacity may not be built and requires site-specific analysis, permits, and possibly infrastructure improvements.

**In-Process General Plan Amendments**  
**DWELLING UNITS**

**56**

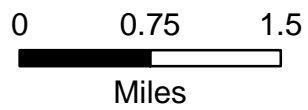
**Dwelling Units**

(+)	(-)
1 -25	
26 -50	
51 -75	
76 -100	
> 100	

County Water Authority Boundary

Community Plan Areas

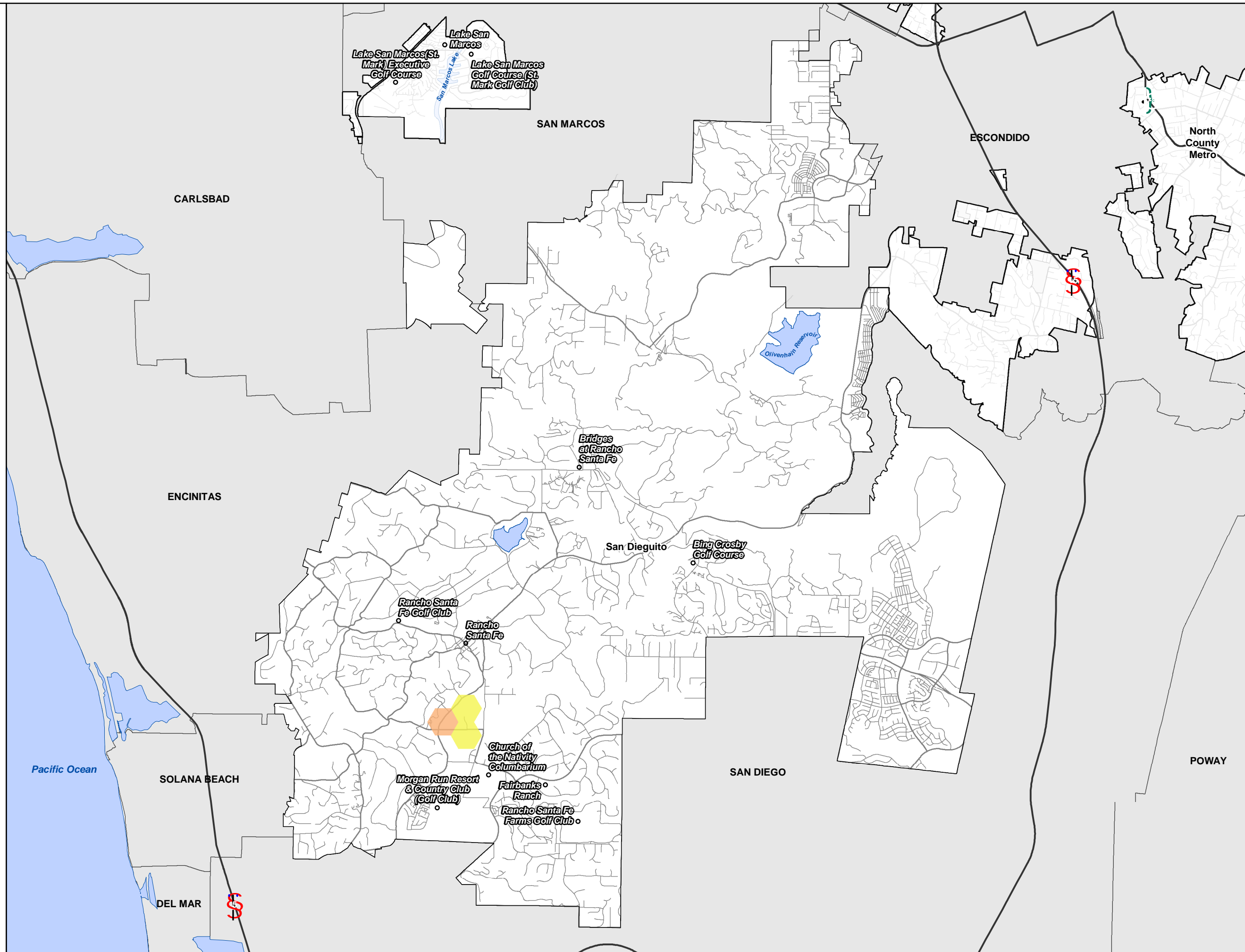
Incorporated Areas



Minimum Mapping Unit (hexbin) = 60 acres



THIS MAP/DATA IS PROVIDED WITHOUT WARRANTY OF ANY KIND, EITHER EXPRESS OR IMPLIED, INCLUDING BUT NOT LIMITED TO, THE IMPLIED WARRANTIES OF MERCHANTABILITY AND FITNESS FOR A PARTICULAR PURPOSE. Note: This product may contain information from the SANDAG Regional Information System which cannot be reproduced without the written permission of SANDAG. Copyright SanGIS 2019 - All Rights Reserved.





# Dwelling Units In-Process

- MAP "I" -

County of San Diego

## San Dieguito






This map shows the total number of dwelling units that are in the process of obtaining discretionary permits. If approved, these developments may require additional permits and infrastructure improvements before construction can begin.

**In-Process Discretionary Projects**  
**DWELLING UNITS**

**137**

### Dwelling Units

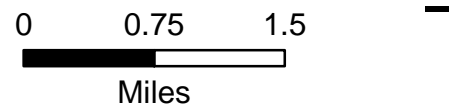
(+)

-  1 -25
-  26 -50
-  51 -75
-  76 -100
-  > 100

 County Water Authority Boundary

 Community Plan Areas

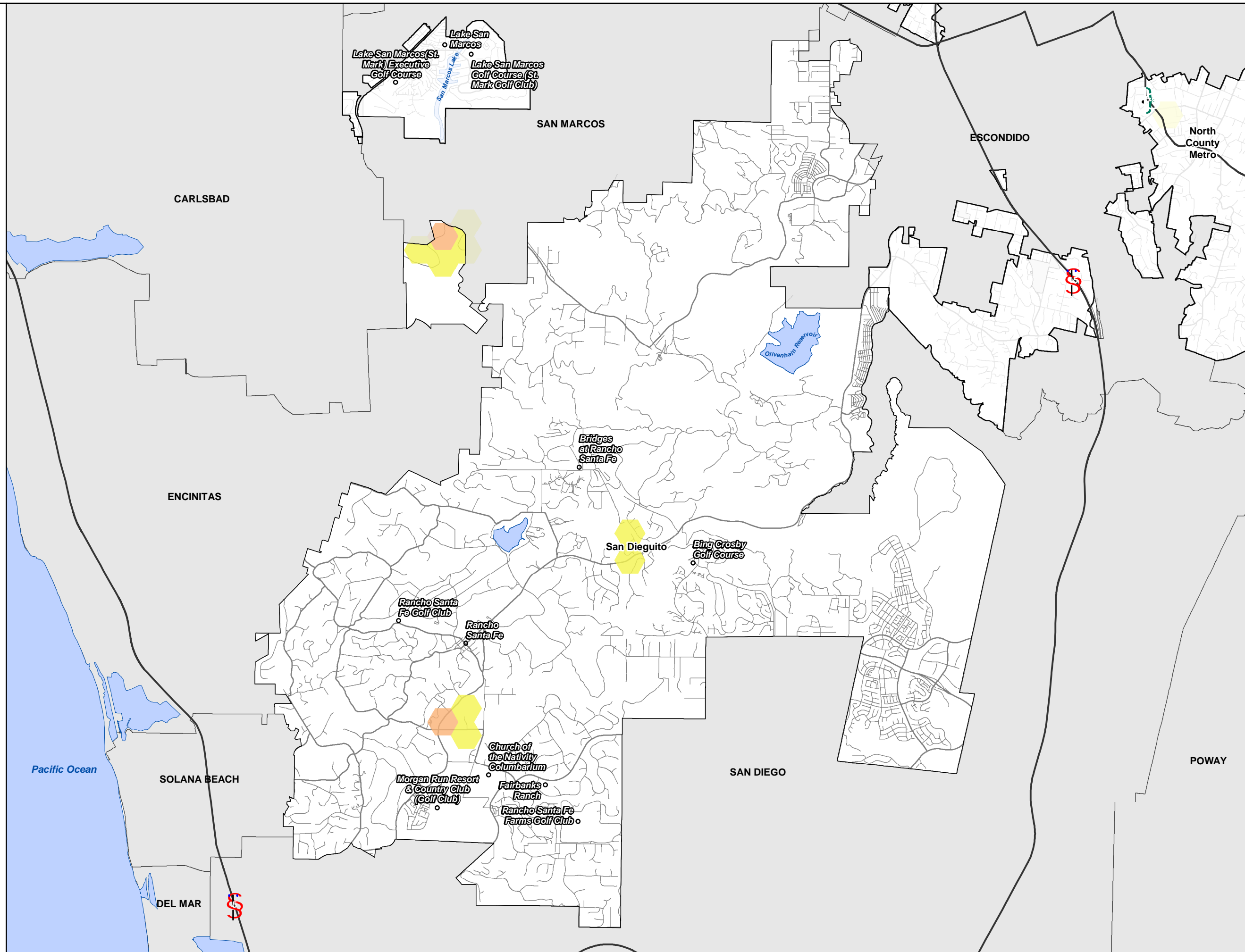
 Incorporated Areas



Minimum Mapping Unit (hexbin) = 60 acres



THIS MAP/DATA IS PROVIDED WITHOUT WARRANTY OF ANY KIND, EITHER EXPRESS OR IMPLIED, INCLUDING BUT NOT LIMITED TO, THE IMPLIED WARRANTIES OF MERCHANTABILITY AND FITNESS FOR A PARTICULAR PURPOSE. Note: This product may contain information from the SANDAG Regional Information System which cannot be reproduced without the written permission of SANDAG. Copyright SanGIS 2019 - All Rights Reserved.



Adjusted Available Capacity of the General Plan  
 - MAP "J" -  
 County of San Diego  
 San Dieguito

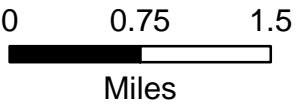
This map shows the estimated number of dwelling units that could be built based on the total residential capacity of the General Plan. The estimate is adjusted to exclude applications for land use changes (Map H) and discretionary permits (Map I)

Future Development Potential  
**DWELLING UNITS**  
**1,938**

Dwelling Units

- (+)
- 1 -25
- 26 -50
- 51 -75
- 76 -100
- > 100

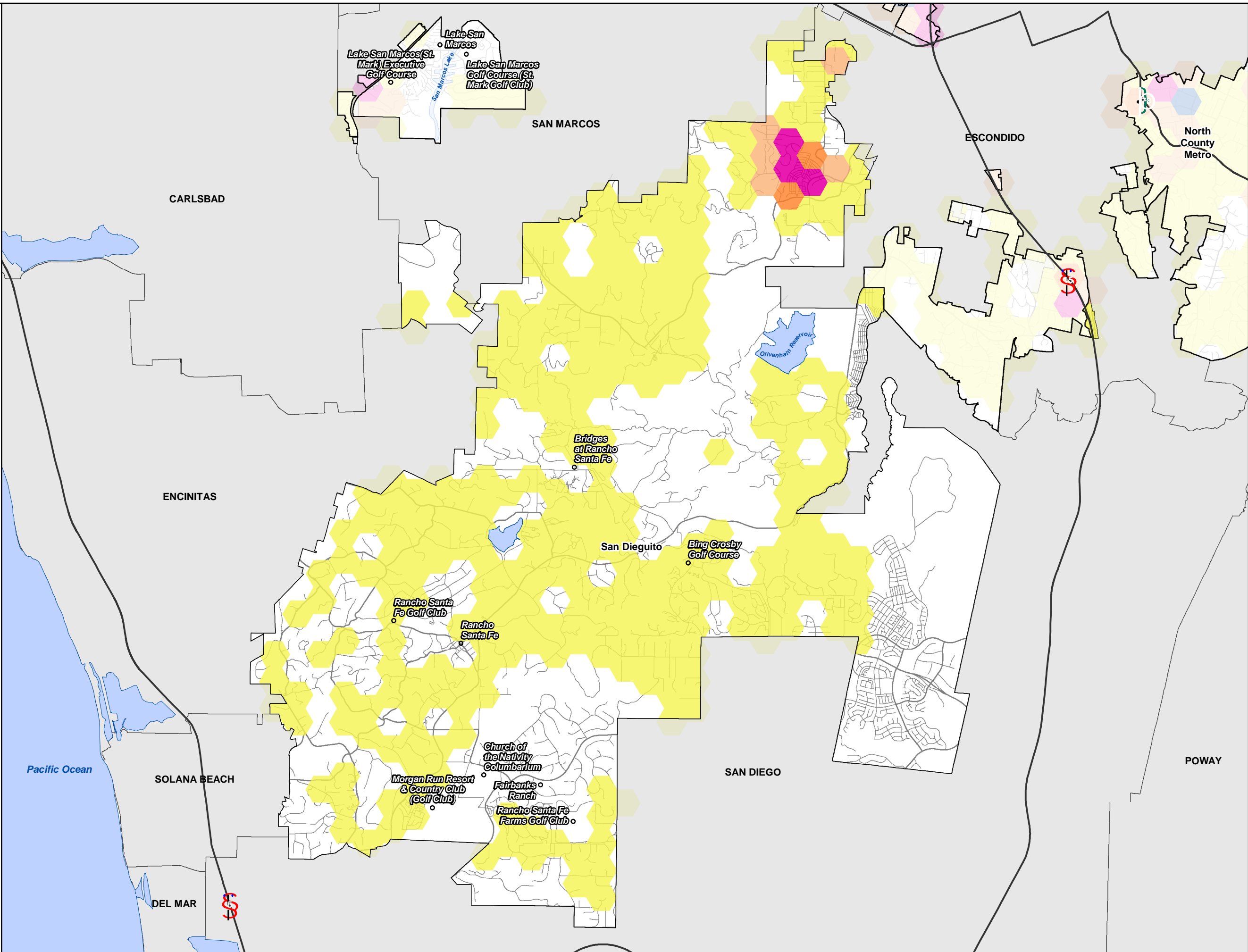
- County Water Authority Boundary
- Community Plan Areas
- Incorporated Areas



Minimum Mapping Unit (hexbin) = 60 acres



THIS MAP/DATA IS PROVIDED WITHOUT WARRANTY OF ANY KIND, EITHER EXPRESS OR IMPLIED, INCLUDING BUT NOT LIMITED TO, THE IMPLIED WARRANTIES OF MERCHANTABILITY AND FITNESS FOR A PARTICULAR PURPOSE. Note: This product may contain information from the SANDAG Regional Information System which cannot be reproduced without the written permission of SANDAG. Copyright SanGIS 2019 - All Rights Reserved.



2011 General Plan  
Differential  
- MAP "K" -  
County of San Diego  
San Dieguito

This map shows the estimated number of dwelling units from developments that exceed or are below the maximum number of dwelling allowed by the General Plan since 2011. The map shows results for both approved and in-process development projects.

2011 General Plan  
Differential  
**DWELLING UNITS**  
**629**

In-Process <b>DWELLING UNITS</b> <b>81</b> ABOVE CAPACITY	Approved <b>DWELLING UNITS</b> <b>606</b> ABOVE CAPACITY
<b>9</b> BELOW CAPACITY	<b>49</b> BELOW CAPACITY

**Dwelling Units**

(+)	(-)
1 -25	1 -25
26 -50	26 -50
51 -75	51 -75
76 -100	76 -100
> 100	> 100

County Water Authority Boundary

Community Plan Areas

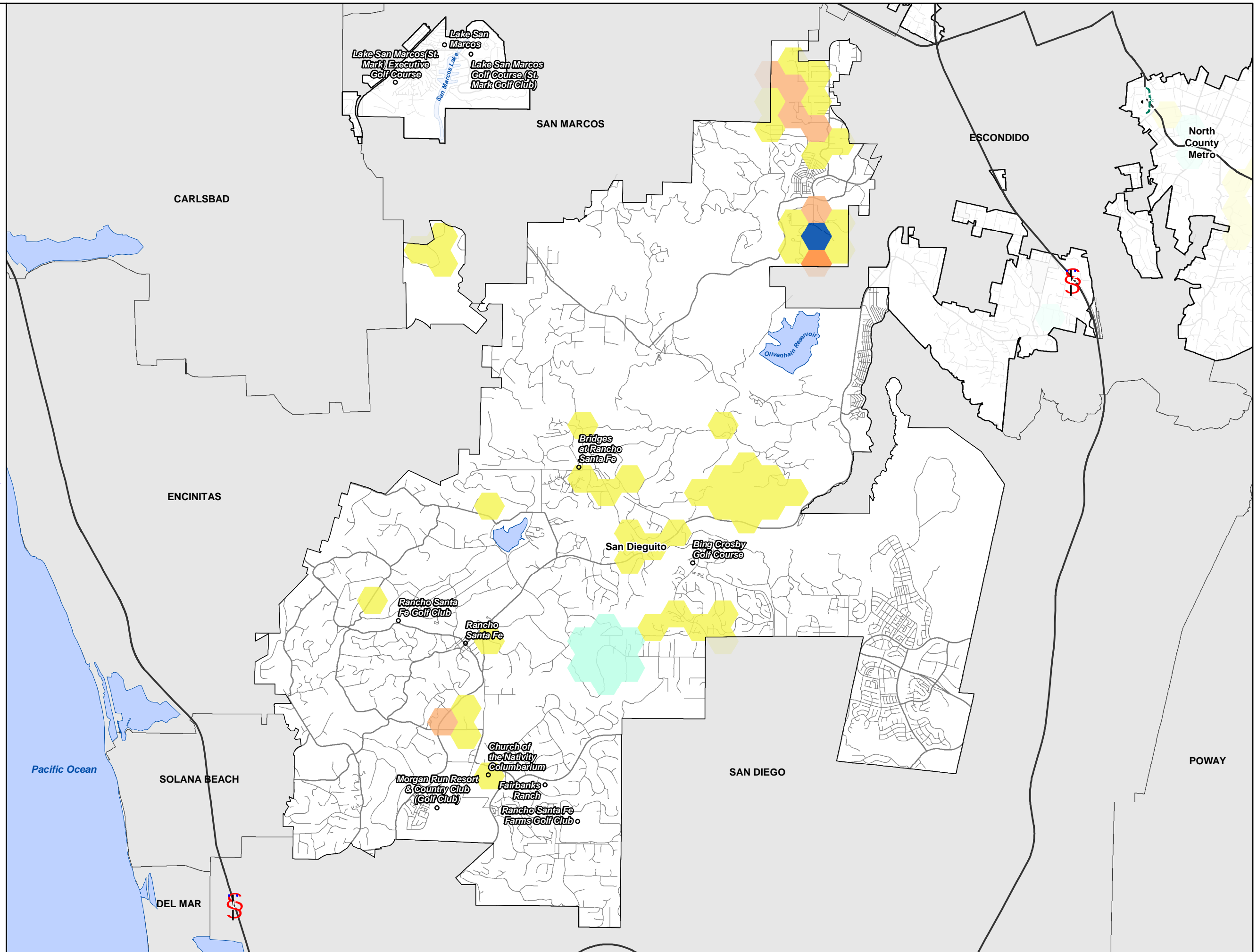
Incorporated Areas

0 0.75 1.5  
Miles

Minimum Mapping Unit (hexbin) = 60 acres



THIS MAP/DATA IS PROVIDED WITHOUT WARRANTY OF ANY KIND, EITHER EXPRESS OR IMPLIED, INCLUDING BUT NOT LIMITED TO, THE IMPLIED WARRANTIES OF MERCHANTABILITY AND FITNESS FOR A PARTICULAR PURPOSE. Note: This product may contain information from the SANDAG Regional Information System which cannot be reproduced without the written permission of SANDAG. Copyright SanGIS 2019 - All Rights Reserved.



Dwelling Units in the Grading Stages of the Land Development Process

- MAP "L" -

County of San Diego  
San Dieguito






This map shows the estimated number of dwelling units from development projects that are currently in the grading stage of construction.

In-Process Grading Permits  
DWELLING UNITS

**19**

Dwelling Units

(+)

-  1 -25
-  26 -50
-  51 -75
-  76 -100
-  > 100

 County Water Authority Boundary

 Community Plan Areas

 Incorporated Areas

0 0.75 1.5

Miles

Minimum Mapping Unit (hexbin) = 60 acres



THIS MAP/DATA IS PROVIDED WITHOUT WARRANTY OF ANY KIND, EITHER EXPRESS OR IMPLIED, INCLUDING BUT NOT LIMITED TO, THE IMPLIED WARRANTIES OF MERCHANTABILITY AND FITNESS FOR A PARTICULAR PURPOSE. Note: This product may contain information from the SANDAG Regional Information System which cannot be reproduced without the written permission of SANDAG. Copyright SanGIS 2019 - All Rights Reserved.

