

2.12 Recreation

This section analyzes the existing recreational resources relative to the Project areas addressed in this SEIR, including local and regional parks; fishing lakes, community recreation centers, special use facilities, and/or open space preserves, and the potential effects that implementation of the proposed Project may have on such resources. In addition, the County of San Diego (County) maintains an interconnected system of regional and community trails that further enhance opportunities for public recreation. Although the former FCI lands are largely located within the Cleveland National Forest, which is regulated by the federal government and is therefore not a County resource, the Cleveland National Forest contributes to recreational opportunities available to County residents on a regional level.

2.12.1 Existing Conditions

The General Plan Update PEIR included a discussion of existing conditions related to recreation in Section 2.14.1 of the Recreation section, including the Project areas covered by this proposed Project. The existing conditions described in the General Plan Update PEIR are the same as the current conditions on the ground. No changes to the existing conditions have been identified that would alter the conclusions in the General Plan Update PEIR. Figure 2.12-1, Existing Parks, provides the location of the existing local parks throughout the County in relation to the Project area. All references used in the General Plan Update PEIR (Chapter 6) were reviewed to ensure they are still valid today. In addition, the existing conditions within the Project area analyzed in this SEIR are the same as those provided in the General Plan Update PEIR, and are hereby incorporated by reference.

2.12.2 Regulatory Framework

Section 2.14.2 of the General Plan Update PEIR describes the Regulatory Framework related to recreation and is hereby incorporated by reference. Applicable federal regulations discussed include the National Trails Systems Act of 1968 (Public Law 90-543). Applicable state regulations discussed include the California State Government Code 66477 (the Quimby Act), California State Government Code 831.4, California State Government Code 846, Government Code Section 65910, The Landscaping and Lighting Act of 1972, Government Code Section 50575 et seq. (the Little-Used Open Space Maintenance Act), Senate Bill 1685, the Open Space Easement Act of 1974, the Conservation Easement Act of 1979, and the Chappie-Z'berg Off-Highway Motor Vehicle Law of 1971. Applicable local regulations include the County Department of Parks and Recreation Strategic Plan, the County Trails Program, the County Trails Master Plan, the Regional Trails Plan, the County Bicycle Transportation Plan, the County Multiple Species Conservation Program, Zoning Ordinance Section 4900 (Usable Open Space Regulation), the County Code of Regulatory Ordinances Sections 86.601–86.608 (Resource Protection Ordinance), the County Code of Regulatory Ordinances Sections 810.101–810.114 (Park Lands Dedication Ordinance), the County Code of Regulatory Ordinances Sections 812.101–812.104 (Trail Defense and Indemnification Ordinance), the County Code of

Regulatory Ordinances Sections 812.201–812.214 (Trails Ordinance), County Ordinance No. 9701, County Ordinance No. 9702, County Ordinance No. 9703, San Diego County Board of Supervisors (Board of Supervisors) Policy F-26 (Utilization of Park Fees and Interest Derived from Park Fees), Board of Supervisors Policy G-6 (User Fees County Parks and Recreation Facilities), Board of Supervisors Policy G-15 (Design Standard for County Facilities), Board of Supervisors Policy I-4 (Acquisition of Land with Federal Assistance under the Open Space Program), Board of Supervisors Policy I-44 (Procedure for Designing New County Owned Community/Local Parks), Board of Supervisors Policy J-37 (Landscaping Maintenance Districts), and Department of Planning and Land Use Policy CP-15.

The regulatory framework discussion in the General Plan Update PEIR as pertains to recreation has not changed since adoption of the General Plan in August 2011 and applies equally to the Project areas addressed in this SEIR. Therefore, it is not repeated here.

2.12.3 Analysis of Project Effects and Cumulative Impacts

The cumulative impact analysis study area for recreation in the General Plan Update PEIR was identified as the entire County, including incorporated cities, and the adjacent Counties of Orange, Riverside, and Imperial (County of San Diego 2011, Section 2.14.4). As the proposed Project is applying 2011 General Plan principles to assign land use designations for the FCI lands throughout the unincorporated area, the cumulative study area for recreation is the same as the General Plan Update PEIR and is hereby incorporated by reference. In addition, Section 1.9 of this SEIR (Cumulative Project Assessment Overview) provides an update of new projects since the adoption of the 2011 General Plan that are considered in the cumulative analysis in order to make the analysis complete.

2.12.3.1 Deterioration of Parks and Recreational Facilities

This section describes potential direct and cumulative impacts on parks and recreational facilities as pertains to the Project areas addressed in this SEIR.

Guidelines for the Determination of Significance

Based on Appendix G of the California Environmental Quality Act (CEQA) Guidelines (14 CCR 15000 et seq.), the proposed Project would have a significant impact if it would increase the use of existing neighborhood and regional parks or other recreational facilities such that substantial physical deterioration of the facilities would occur or be accelerated.

Analysis

The General Plan Update PEIR evaluated impacts from the adoption of the goals and policies of the 2011 General Plan County-wide, including FCI lands. In addition, the General Plan Update PEIR evaluated buildout of the land use designations applied throughout the unincorporated area with the exception of former FCI lands. The General Plan Update PEIR determined that buildout under the 2011 General Plan would result in potentially significant direct and cumulative impacts

related to the deterioration of parks and recreational facilities (County of San Diego 2011). The discussion of impacts can be found in Section 2.14, Recreation, of the General Plan Update PEIR and is hereby incorporated by reference. These impacts would be reduced through the implementation of a combination of federal, state, and local regulations; existing County regulatory processes; the adopted 2011 General Plan goals and policies; and specific mitigation measures/implementation programs identified in the General Plan Update PEIR.

Similar direct and cumulative effects identified in the General Plan Update PEIR would occur with future development of the proposed Project areas addressed in this SEIR, which could result in increased demand for parks and recreational facilities. With future buildout of the proposed Project areas, the anticipated increase in population would result in a greater demand on the County's recreational resources. Such an increase in demand would have the potential to cause the deterioration of existing facilities due to an increase in use by County residents, unless the County's projected goals of 6,782 acres of new local park land are met by 2011 General Plan buildout. In addition, the proposed Project would cause substantial future growth in Ramona, Alpine, and Jamul/Dulzura, which currently have a deficiency in recreational facilities and therefore would be more likely to experience accelerated deterioration of local recreational facilities. Therefore, the proposed Project could result in potentially significant direct impacts from the deterioration of parks and recreational facilities.

The cumulative projects in the San Diego region would have the potential to result in a significant cumulative impact if they would, in combination, result in the deterioration of parks and recreational facilities due to increased usage. Although the proposed Project may also increase demand for parks and recreational facilities outside the County's jurisdiction, including federally or state-owned facilities in the eastern County, the proposed Project is not anticipated to result in significant population growth in these areas. Some cumulative projects, such as buildout of general plans for adjacent jurisdictions, would have the potential to increase the demand for recreational facilities, which could result in deterioration of existing facilities. As a result, the proposed Project could contribute to a potentially significant cumulative impact from the deterioration of parks and recreational facilities.

The potentially significant direct and cumulative effects on parks and recreational facilities resulting from implementation of the proposed Project would be reduced to below a level of significance by the existing regulations, implementation programs (2011 General Plan goals/policies), and mitigation measures from the General Plan Update PEIR, which are repeated in Section 2.12.4.1 (Deterioration of Parks and Recreational Facilities) of this SEIR. No additional measures would be required to reduce proposed Project impacts on parks and recreational facilities.

2.12.3.2 Construction of New Recreational Facilities

This section describes potential direct and cumulative impacts on parks and recreational facilities as pertains to the Project areas addressed in this SEIR.

Guidelines for the Determination of Significance

Based on Appendix G of the CEQA Guidelines, the proposed Project would have a significant impact if it would include recreational facilities or require the construction or expansion of recreational facilities, which would have an adverse effect on the environment.

Analysis

The General Plan Update PEIR evaluated impacts from the adoption of the goals and policies of the 2011 General Plan County-wide, including FCI lands. In addition, the General Plan Update PEIR evaluated buildout of the land use designations applied throughout the unincorporated area, with the exception of former FCI lands. The General Plan Update PEIR determined that buildout under the 2011 General Plan would result in potentially significant direct and cumulative environmental impacts related to the construction of new recreational facilities or the expansion of existing facilities. The discussion of impacts can be found in Section 2.14, Recreation, of the General Plan Update PEIR and is hereby incorporated by reference. The General Plan Update PEIR found that these impacts would be reduced through the implementation of a combination of federal, state, and local regulations; existing County regulatory processes, such as the Zoning Ordinance, the Noise Ordinance, the Multiple Species Conservation Plan (MSCP), the Habitat Loss Permit Ordinance, and relevant Board of Supervisors policies; the adopted 2011 General Plan goals and policies; and specific mitigation measures/implementation programs identified in the General Plan Update PEIR.

Similar direct and cumulative effects would occur with future development of the proposed Project areas addressed in this SEIR that may involve construction of new, or expansion of existing, recreational facilities (e.g., parks, trails, athletic fields, golf courses). Construction or expansion of such facilities could result in physical impacts to the affected lands, such as impacts to biological and/or cultural resources. The construction or expansion of recreational facilities could also increase traffic on affected roadways, result in higher temporary and permanent ambient noise levels, and have negative visual effects in areas where new facilities are constructed. Although no specific recreational facilities are identified for future development within the proposed Project areas at this time, such facilities could be constructed either on these lands or as the result of development of these lands to meet additional demand for recreational resources. Therefore, the proposed Project could result in potentially significant direct impacts from the construction of new recreational facilities.

Furthermore, implementation of cumulative projects in the San Diego County region could either directly result in the construction of new recreational facilities or be required to fund the construction or expansion of recreational facilities due to population increases as a result of the cumulative projects. These cumulative projects, combined with implementation of the proposed Project, could incrementally increase the need for new or expanded facilities, which would have the potential to result in adverse environmental effects. Such impacts would also be cumulative in nature, as they would contribute to impacts from recreational facilities on a regional level

when combined with other development allowed under the 2011 General Plan. Therefore, the proposed Project would contribute to a cumulatively considerable contribution to a potentially significant cumulative impact associated with the construction of recreational facilities.

The potentially significant direct and cumulative environmental effects related to the construction of new recreational facilities or the expansion of existing facilities due to implementation of the proposed Project would be reduced to below a level of significance by the existing regulations, implementation programs (2011 General Plan goals/policies) and mitigation measures from the General Plan Update PEIR, which are repeated in Section 2.12.4.2 (Construction of New Parks and Recreational Facilities) of this SEIR. No additional measures would be required to reduce such proposed Project impacts.

2.12.4 Mitigation

2.12.4.1 *Deterioration of Parks and Recreational Facilities*

2011 General Plan Policies

Direct and cumulative impacts associated with the deterioration of parks and recreational facilities resulting from the proposed Project would be reduced to below a level of significance with implementation of the following applicable 2011 General Plan policies and mitigation measures identified in the General Plan Update PEIR:

Policy LU-12.1: Concurrency of Infrastructure and Services with Development. Require the provision of infrastructure, facilities, and services needed by new development prior to that development, either directly or through fees. Where appropriate, the construction of infrastructure and facilities may be phased to coincide with project phasing. In addition to utilities, roads, bicycle and pedestrian facilities, and education, police, and fire services, transit-oriented infrastructure, such as bus stops, bus benches, turnouts, etc., should be provided, where appropriate.

Policy LU-12.2: Maintenance of Adequate Services. Require development to mitigate significant impacts to existing service levels of public facilities or services for existing residents and businesses. Provide improvements for Mobility Element roads in accordance with the Mobility Element Network Appendix matrices, which may result in ultimate build-out conditions that achieve an improved LOS but do not achieve a LOS of D or better.

Policy M-12.1: County Trails System. Implement a County Trails Program by developing the designated trail and pathway alignments and implementing goals and policies identified in the Community Trails Master Plan.

Policy M-12.2: Trail Variety. Provide and expand the variety of trail experiences that provide recreational opportunities to all residents of the unincorporated County, including urban/suburban, rural, wilderness, multi-use, staging areas, and support facilities.

Policy M-12.3: Trail Planning. Encourage trail planning, acquisition, development, and management with other public agencies that have ownership or jurisdiction within or adjacent to the County.

Policy M-12.4: Land Dedication for Trails. Require development projects to dedicate and improve trails or pathways where the development will occur on land planned for trail or pathway segments shown on the Regional Trails Plan or Community Trails Master Plan.

Policy M-12.5: Future Trails. Explore opportunities to designate or construct future trails on County-owned lands, lands within the Multiple Species Conservation Program (MSCP), or other lands already under public ownership or proposed for public acquisition.

Policy M-12.6: Trail Easements, Dedications, and Joint-Use Agreements. Promote trail opportunities by obtaining easements, dedications, license agreements, or joint-use agreements from other government agencies and public and semi-public agencies.

Policy M-12.7: Funding for Trails. Seek funding opportunities for trail acquisition, implementation, maintenance and operation.

Policy M-12.8: Trails on Private Lands. Maximize opportunities that are fair and reasonable to secure trail routes across private property, agricultural and grazing lands, from willing property owners.

Policy M-12.10: Recreational and Educational Resources. Design trail routes that meet a public need and highlight the County's biological, recreational and educational resources, including natural, scenic, cultural, and historic resources.

Policy H-2.2: Projects with Open Space Amenities in Villages. Require new multi-family projects in Villages to be well-designed and include amenities and common open space areas that enhance overall quality of life.

Policy COS-21.1: Diversity of Users and Services. Provide parks and recreation facilities that create opportunities for a broad range of recreational experiences to serve user interests.

Policy COS-21.2: Location of Parks. Locate new local parks and recreation facilities near other community-oriented public facilities such as schools, libraries, and recreation centers where feasible, so that they may function as the "heart" of a community.

Policy COS-22.1: Variety of Recreational Programs. Provide and promote a variety of high quality active and passive recreation programs that meet the needs of and benefit County residents.

Policy COS-23.1: Public Access. Provide public access to natural and cultural (where allowed) resources through effective planning that conserves the County's native wildlife, enhances and restores a continuous network of connected natural habitat and protects water resources.

Policy COS-23.2: Regional Coordination. Coordinate the planning, acquisition, protection, development, and management of open space among governmental agencies and private organizations to maximize opportunities to link regional open space lands.

Policy COS-24.1: Park and Recreation Contributions. Require development to provide fair-share contributions toward parks and recreation facilities and trails consistent with local, State, and federal law.

Policy COS-24.2: Funding Opportunities. Maximize funding opportunities for the following:

- The acquisition, expansion, and development of parks, recreation facilities, open space preserves, and trails.
- The operation, maintenance, and management of parks, recreation facilities, open space preserves, and trails.

These policies require concurrency of infrastructure and services with development, prohibit new development that degrades existing facilities, reduce recreational facility deterioration by requiring fees or the construction of new recreational facilities, encourage the acquisition of new recreational lands and the construction of additional trails, identify trail improvement strategies, encourage funding opportunities for recreational facilities, provide guidance for improving recreational facilities within the County, require certain projects to include on-site common open space, promote the diversity of recreational facilities, encourage the location of new parks into community center areas, promote acquisition of valuable open space resources, provide for additional public access and regional coordination so that additional recreational opportunities can be made to County residents, set recreation contributions for new development, and establishing maximum funding opportunities. Adherence to these policies would minimize physical deterioration of parks or other recreational facilities.

Mitigation Measures

Rec-1.1 Implement Board Policy I-44 to identify park and recreation needs and priorities for communities, and utilize the Community Plans when identifying park and recreation facility requirements.

Rec-1.2 Coordinate with communities, agencies and organizations to identify, prioritize and develop park and recreation needs. This shall include pursuing partnership opportunities with school districts and other agencies to develop new park and recreation facilities; on-going support of the Park Advisory Committee and use of community center surveys to solicit input on park and recreation program and facility needs and issues; and continuing partnerships with other jurisdictions to share operation and maintenance costs for facilities via joint powers agreements.

Rec-1.3 Prepare a design manual to provide concepts for park and recreation facility components.

Rec-1.4 Participate in discretionary review of residential projects with 50 or more units to identify park facility needs. Also, implement the Subdivision Ordinance to require the provision of trail and pathways shown on the Regional Trails Plan or Community Trails Master Plan. In addition, modify development standards and design guidelines

SIGNIFICANT ENVIRONMENTAL EFFECTS OF THE PROPOSED PROJECT

to include common open space amenities, such as tot lots, and the use of universal design features that accommodate both abled and disabled individuals.

- Rec-1.5** Attain funding for land acquisition and construction of recreational facilities by taking the following actions: implement the PLDO; solicit grants and bonds to fund the operation and maintenance of park and recreation facilities; and form Landscape Improvement Districts and County Service Areas.
- Rec-1.6** Acquire trail routes across private lands through direct purchase, easements, and dedication, or by other means from a willing property owner/seller. Encourage the voluntary dedication of easements and/or gifts of land for trails through privately-owned lands, including agricultural and grazing lands.
- Rec-1.7** Prioritize the acquisition and development of trail segments in a manner to provide maximum environmental and public benefit given available public and private resources and the population served. As part of this effort, also maintain a database of information on the locations, status of easements, classifications, forms of access, management activities and land ownership relative to trail facilities.
- Rec-1.8** Implement and revise as necessary the Regional Trails Plan as well as the Community Trails Master Plan. This will ensure that community goals, policies, and implementation criteria are defined for community trails. Facilitate interjurisdictional coordination for the implementation of these plans.
- Rec-1.9** Consult with the appropriate governing tribal council to facilitate the provision of trail connections through tribal land and/or Native American cultural resources.
- Rec-1.10** Develop procedures to coordinate the operation and maintenance of pathways with similar activities for adjacent roads and road rights-of-way.
- Rec-1.11** Prioritize open space acquisition needs through coordination with government agencies and private organizations. Once prioritized, acquire open space lands through negotiation with private land owners and through MSCP regulatory requirements. The operation and management of such acquisitions will continue to be achieved by preparing, implementing, and updating Resource Management Plans and MSCP Area Specific Management Directives (ASMDs) for each open space area.

Rec-1.1 will help ensure that additional facilities are directed to areas with greatest need, thereby reducing overuse of existing parks and facilities. Rec-1.2 encourages coordination with communities, agencies and organizations to identify, prioritize and develop park and recreation needs. Rec-1.3 will ensure that parks and recreation facilities are designed to be compatible with their surroundings and to meet community needs, thereby minimizing overuse of other facilities. Rec-1.4 will help ensure that recreational facility development is correlated with residential development. The acquisition of land and construction of recreational facilities as identified in Rec-1.5 will further prevent potential deterioration of existing facilities. Such acquisitions as

identified in Rec-1.6 will allow provision of recreational facilities in unserved communities and reduce deterioration of existing facilities. Rec-1.7 will allow for expanded trail facilities concurrent with increased demand. Rec-1.8 will ensure that community goals, policies, and implementation criteria are defined for community trails. This measure also requires interjurisdictional coordination for the implementation of these plans. Rec-1.9 requires that the County consult with the appropriate governing tribal council to facilitate the provision of trail connections through tribal land and/or Native American cultural resources. This expansion of trail facilities would minimize deterioration of existing facilities. Rec-1.10 this would prevent deterioration of pathways by requiring the County to develop procedures that would coordinate the operation and maintenance of pathways with similar activities for adjacent roads and road rights-of-way. Rec-1.11 will result in the coordinated acquisition and maintenance of new land which will offset potential physical deterioration of existing facilities.

2.12.4.2 Construction of New Recreational Facilities

Direct and cumulative impacts associated with the construction of new recreational facilities would be reduced to below a level of significance with implementation of the following applicable 2011 General Plan policies and mitigation measures as identified in the General Plan Update PEIR.

2011 General Plan Policies

In addition to Policies M-12.5, M-12.10, H-2.2, COS-21.2, and COS-23.1 listed in Section 2.12.4.1, the following policies would further reduce impacts associated with the construction of new recreational facilities to below a level of significance:

Policy LU-6.4: Sustainable Subdivision Design. Require that residential subdivisions be planned to conserve open space and natural resources, protect agricultural operations including grazing, increase fire safety and defensibility, reduce impervious footprints, use sustainable development practices, and, when appropriate, provide public. [See applicable community plan for possible relevant policies].

Policy LU-9.7: Town Center Planning and Design. Plan and guide the development of Town Centers and transportation nodes as the major focal point and activity node for Village areas. Utilize design guidelines to be compatible with the unique character of a community. Roadways, streetscapes, building facades, landscaping, and signage within the town center should be pedestrian oriented. Wherever possible, locate public facilities, such as schools, libraries, community centers, and parks in Town Centers and Villages.

Policy LU-18.2: Co-Location of Civic Uses. Encourage the co-location of civic uses such as County library facilities, community centers, parks, and schools. To encourage access by all segments of the population, civic uses should be accessible by transit whenever possible.

Policy M-12.9: Environmental and Agricultural Resources. Site and design specific trail segments to minimize impacts to sensitive environmental resources, ecological systems, and

agricultural lands. Within the MSCP preserves, conform siting and use of trails to County MSCP Subarea Plans and wildlife agency approved MSCP management plans.

Policy COS-21.3: Park Design. Design parks that reflect community character and identity, incorporate local natural and cultural landscapes and features, and consider the surrounding land uses and urban form and cultural and historic resources.

Policy COS-21.4: Regional Parks. Require new regional parks to allow for a broad range of recreational activities and preserve special or unique natural or cultural features when present.

Policy COS-23.3: Public Safety Involvement. Coordinate with public safety agencies to address safety concerns when planning the acquisition and management of open space.

These policies require residential subdivisions to reduce construction impacts to the environment, apply guidelines to maintain the unique character of a community, encourage the co-location of civic uses, guide the future development of trails in the unincorporated County to minimize environmental impacts and highlight existing natural resources, and require some projects to create common open space as a project amenity. Adherence to these policies would reduce the potential for construction and operation of new or expanded recreational facilities to have an adverse effect on the environment.

Mitigation Measures

Mitigation measures Rec-1.1 through Rec-1.4, Rec-1.8, and Rec-1.9 as described in Section 2.12.4.1 are applicable to this issue and are incorporated here by reference. In addition, the following measures would further reduce impacts associated with the construction of new recreational facilities.

Rec-2.1 Update Community Plans to reflect the character and vision for each individual community; to address civic needs in a community and encourage the co-location of uses; to establish and maintain greenbelts between communities; to prioritize infrastructure improvements and the provision of public facilities for villages and community cores; and to identify pedestrian routes. With these issues addressed in community plans, potential impacts to visual resources, community character, natural resources, cultural resources, and traffic will be substantially lessened should new or expanded recreational facilities be needed in a given community.

Rec-2.2 Use community design guidelines as a resource when designing park and recreation facilities. This will help ensure that such facilities are consistent with community character.

Rec-2.3 Amend the Subdivision Ordinance to require new residential development to be integrated with existing neighborhoods by providing connected and continuous road, environmentally-sensitive pathway/trail and recreation/open space networks. Also add new conservation-oriented design guidelines for rural lands projects as part of this amendment. These measures will assist in the planning for recreational

facilities as new development is proposed while minimizing impacts to sensitive resources and community character.

Rec-2.4 Develop procedures to consider designating trails that correspond to existing (non-designated) trails, paths, or unpaved roadbeds that already have a disturbed tread. This will minimize new impacts to the natural environment and will potentially benefit existing trail users.

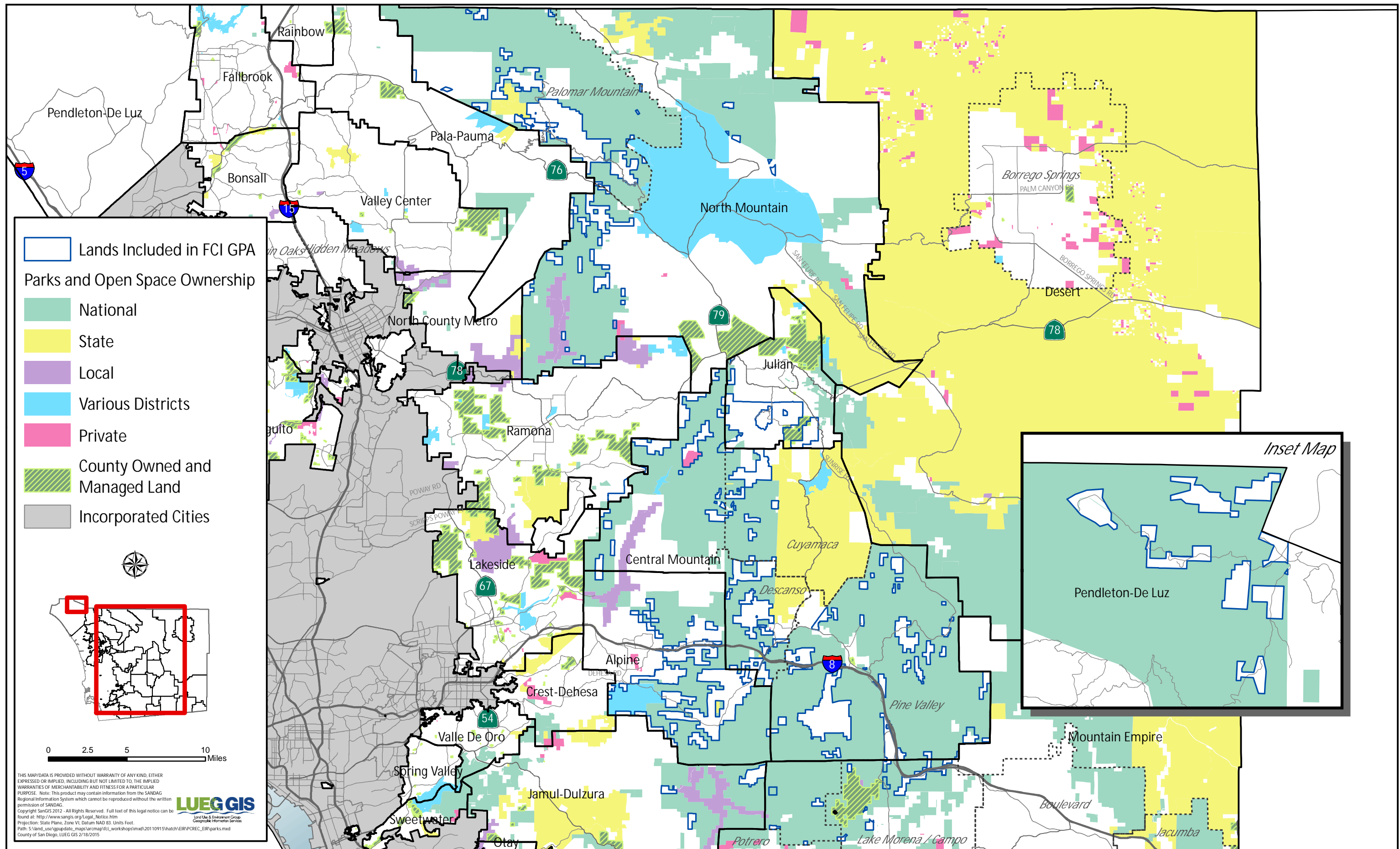
Rec-2.5 Through implementation of Resource Management Plans, monitor and manage preserves and trails such that environmental resources do not become impacted as a result of soil erosion, flooding, fire hazard, or other environmental or man-made effects. Any impacts identified to environmental resources will be restored in accordance with the management directives within the Resource Management Plans.

Rec-2.6 Develop procedures to encourage the involvement and input of the agricultural community in matters relating to trails on or adjacent to agricultural lands and place a priority on the protection of agriculture.

Rec-1.1 will help ensure that additional facilities meet community needs. Rec-1.2 requires coordination with communities, agencies and organizations to identify, prioritize and develop park and recreation needs. Rec-1.3 will ensure that parks and recreation facilities are designed to be compatible with their surroundings and to meet community needs, thereby minimizing environmental impacts. Rec-1.4 will help ensure that impacts associated with recreational facilities are addressed early in project development. Rec-1.8 will ensure that community goals, policies, and implementation criteria are defined for community trails. This measure also requires inter-jurisdictional coordination for the implementation of these plans. Rec-1.9 will help identify and avoid potential environmental impacts.

Rec-2.1 requires the County to update Community Plans to reflect the character and vision for each individual community; to address civic needs in a community and encourage the co-location of uses; to establish and maintain greenbelts between communities; to prioritize infrastructure improvements and the provision of public facilities for villages and community cores; and to identify pedestrian routes. With these issues addressed in community plans, potential impacts to visual resources, community character, natural resources, cultural resources, and traffic will be substantially lessened should new or expanded recreational facilities be needed in a given community. Rec-2.2 will help ensure that such facilities are consistent with community character. Rec-2.3 will assist in the planning for recreational facilities as new development is proposed while minimizing impacts to sensitive resources and community character. Rec-2.4 will minimize new impacts to the natural environment and will potentially benefit existing trail users. Rec-2.6 will help minimize potential impacts to agricultural resources from expanded recreational facilities.

THIS PAGE INTENTIONALLY LEFT BLANK.



Source: SanGIS, County of San Diego, 2015

THIS PAGE INTENTIONALLY LEFT BLANK.