
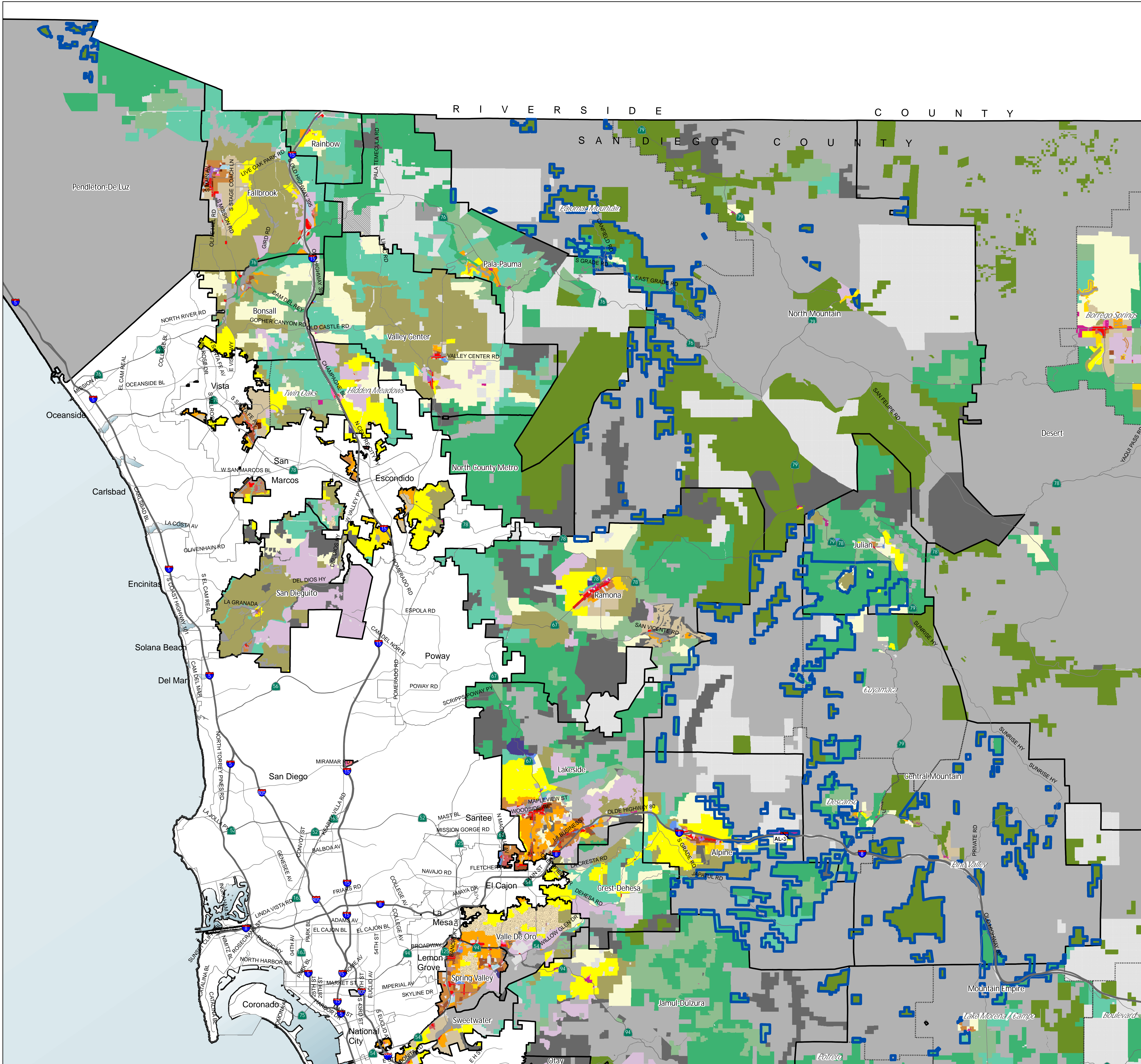


COUNTY OF SAN DIEGO
 FOREST CONSERVATION INITIATIVE LANDS
 GENERAL PLAN AMENDMENT

Alpine Special Study Land Use Map
 Mid Density Land Use Map Alternative
 June 2015

Land Use Designations

-  Lands Included in the FCI GPA
-  Village Residential (VR-30)
-  Village Residential (VR-24)
-  Village Residential (VR-20)
-  Village Residential (VR-15)
-  Village Residential (VR-10.9)
-  Village Residential (VR-7.3)
-  Village Residential (VR-4.3)
-  Village Residential (VR-2.9)
-  Village Residential (VR-2)
-  Semi-Rural Residential (SR-5)
-  Semi-Rural Residential (SR-1)
-  Semi-Rural Residential (SR-2)
-  Semi-Rural Residential (SR-4)
-  Semi-Rural Residential (SR-10)
-  Rural Lands (RL-20)
-  Rural Lands (RL-40)
-  Rural Lands (RL-80)
-  Specific Plan Area (residential densities in italics)
-  Office Professional
-  Neighborhood Commercial
-  General Commercial
-  Rural Commercial
-  Limited Impact Industrial
-  Medium Impact Industrial
-  High Impact Industrial
-  Village Core Mixed Use
-  Public/Semi-Public Facilities
-  Public/Semi-Public Lands (Solid Waste Facility)
-  Public Agency Lands
-  Tribal Lands
-  Open Space (Recreation)
-  Open Space (Conservation)
-  Community/Subregional Planning Area Boundary
-  Subregional Group Boundary
-  Incorporated Cities



Map Prepared By:
LUFGGIS
 Land Use & Planning Group

Coordinates: NAD83 Feet

THIS MAP/DATA IS PROVIDED WITHOUT WARRANTY OF ANY KIND, EITHER EXPRESS OR IMPLIED, INCLUDING BUT NOT LIMITED TO, THE IMPLIED WARRANTIES OF MERCHANTABILITY AND FITNESS FOR A PARTICULAR PURPOSE. Note: This product may contain information from the SANDAG Regional Information System which cannot be reproduced without the written permission of SANDAG. This product may contain information reproduced with permission granted by SANDAG to LUFGGIS as a consultant to SANDAG. This map is copyrighted by SANDAG. SANDAG is a community of cities and is not responsible for any part thereof, whether for personal use or resale, without the prior, written permission of SANDAG. SANDAG is a community.

Copyright SANDAG 2009. All Rights Reserved. Full text of this legal notice can be found at: http://www.sandag.org/Legal_Notice.htm

This is a draft map and should be destroyed upon adoption of subsequent versions.

Source: County of San Diego, SANDAG, SANDAG.
 File reference: S:\land_use\lgp\alpine_map\alpine\alpine\community_mid.mxd

