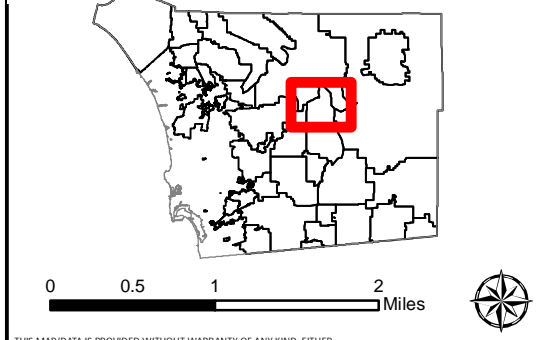


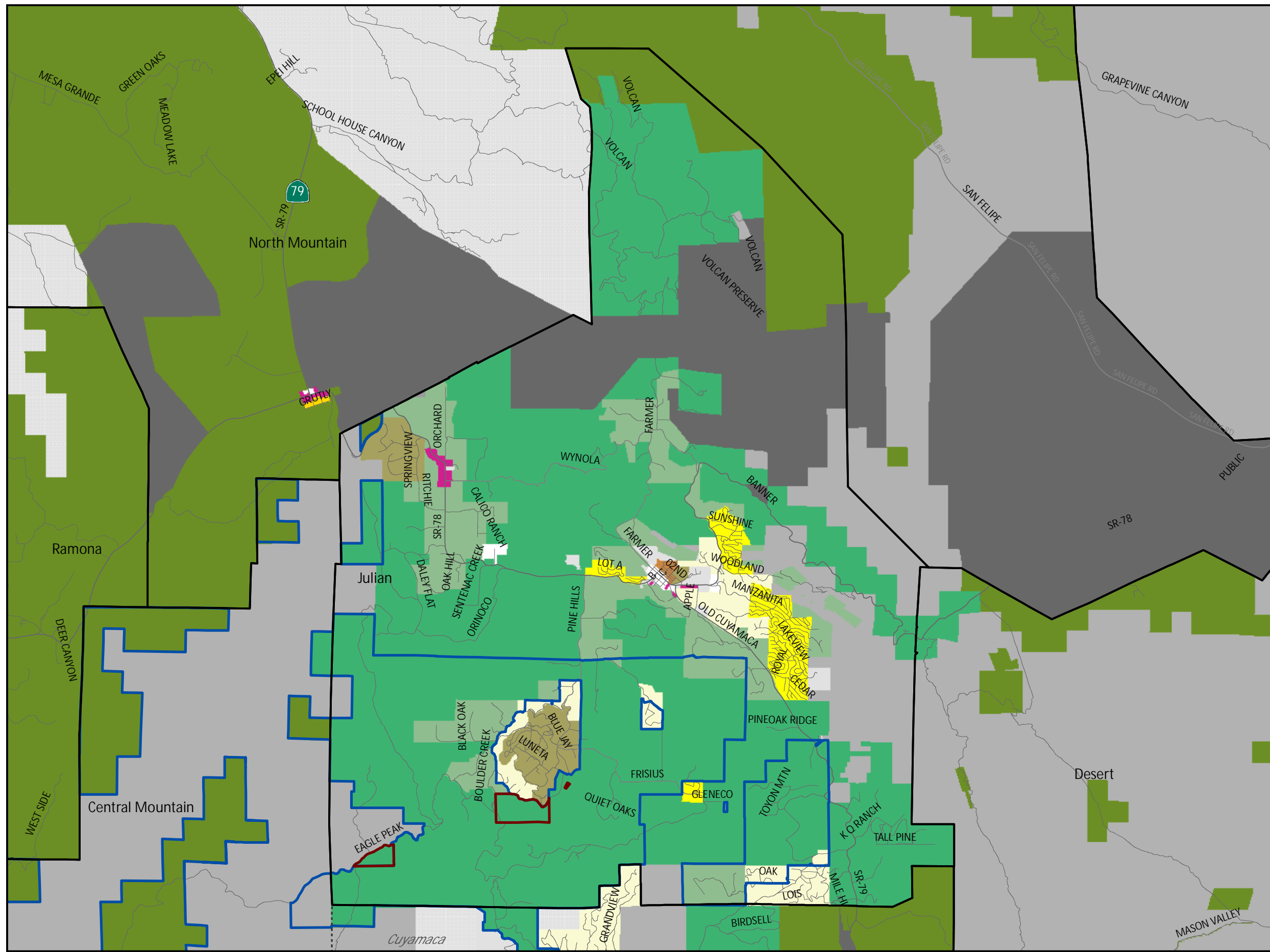
COUNTY OF SAN DIEGO
 FOREST CONSERVATION INITIATIVE LANDS
 GENERAL PLAN AMENDMENT
Julian
 Community Planning Area

Proposed Project
 Land Use Map
 June 25, 2014

- Lands Included in FCI GPA
- Areas Changed Outside FCI
- Village Residential (VR-7.3)
- Village Residential (VR-2.9)
- Semi-Rural Residential (SR-1)
- Semi-Rural Residential (SR-2)
- Semi-Rural Residential (SR-4)
- Semi-Rural Residential (SR-10)
- Rural Lands (RL-40)
- Rural Lands (RL-80)
- Rural Commercial
- Public/Semi-Public Facilities
- Public Agency Lands
- Tribal Lands
- Open Space (Recreation)
- Open Space (Conservation)



THIS MAP/DATA IS PROVIDED WITHOUT WARRANTY OF ANY KIND, EITHER EXPRESSED OR IMPLIED, INCLUDING BUT NOT LIMITED TO, THE IMPLIED WARRANTIES OF MERCHANTABILITY AND FITNESS FOR A PARTICULAR PURPOSE. Note: This product may contain information from the SANDAG Regional Information System which cannot be reproduced without the written permission of SANDAG.
 Copyright SanGIS 2012 - All Rights Reserved. Full text of this legal notice can be found at: http://www.sangis.org/Legal_Notice.htm
 Projection: State Plane, Zone VI, Datum NAD 83, Units Feet.
 Path: S:\land_use\gpadate_maps\sanmag\fc_l_workshops\mxd\20110915\hatch\EIR\PROJ_ER\Julian.mxd
 County of San Diego, LUEG GIS 2/18/2015



Source: SanGIS, County of San Diego, 2014

Julian Land Use Map

Figure 1-8