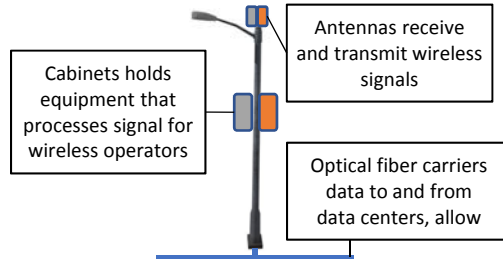
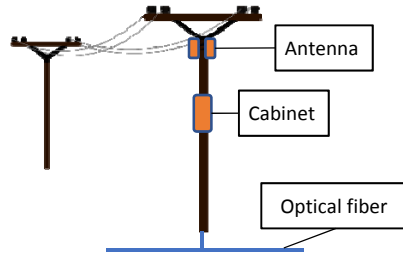


## CONFIGURATION PREFERENCES

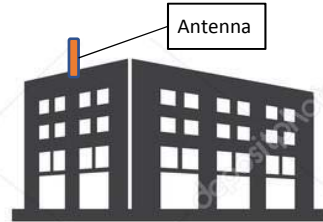
### 1. Co-location with an existing facility



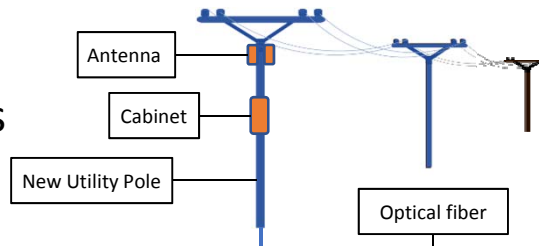
### 2. Existing or replacement utility poles



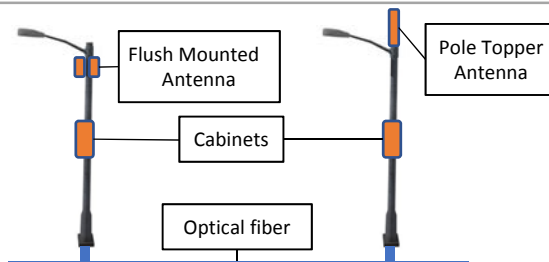
### 3. Existing or replacement structure, or roof-mounted in Industrial & Commercial Zones only



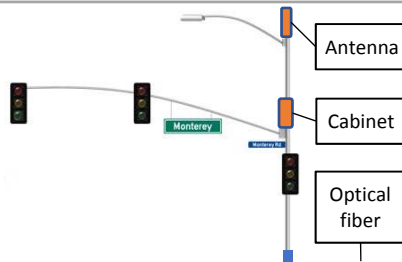
### 4. New utility poles



### 5. County-owned street light poles



### 6. County-Owned traffic signals



**DRAWINGS ARE NOT TO SCALE – FOR ILLUSTRATIVE PURPOSES ONLY**

Small Cell Wireless Antennas are no more than three (3) cubic feet, and all other related equipment on the structure is no more than 28 cubic feet. Utility poles, street lights, and traffic signals range in height from 25 to 50 feet. The combined height of the structure and SCW shall not exceed 50 feet (including antennas).