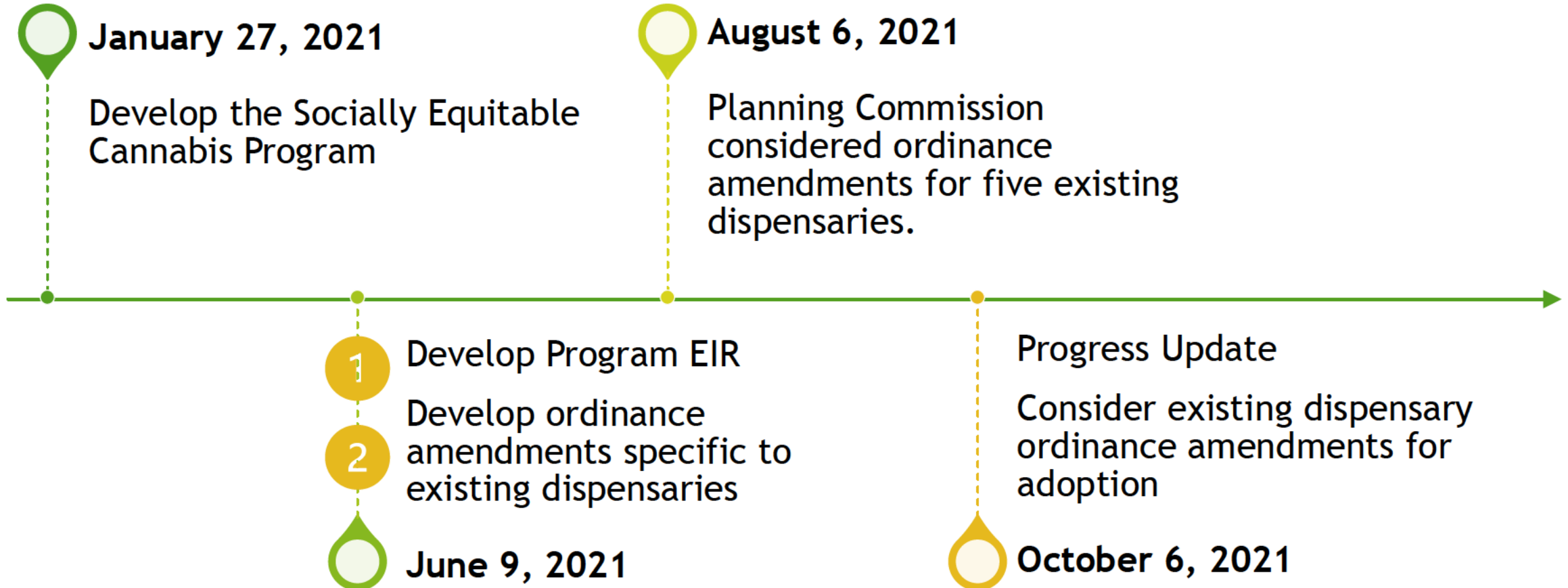




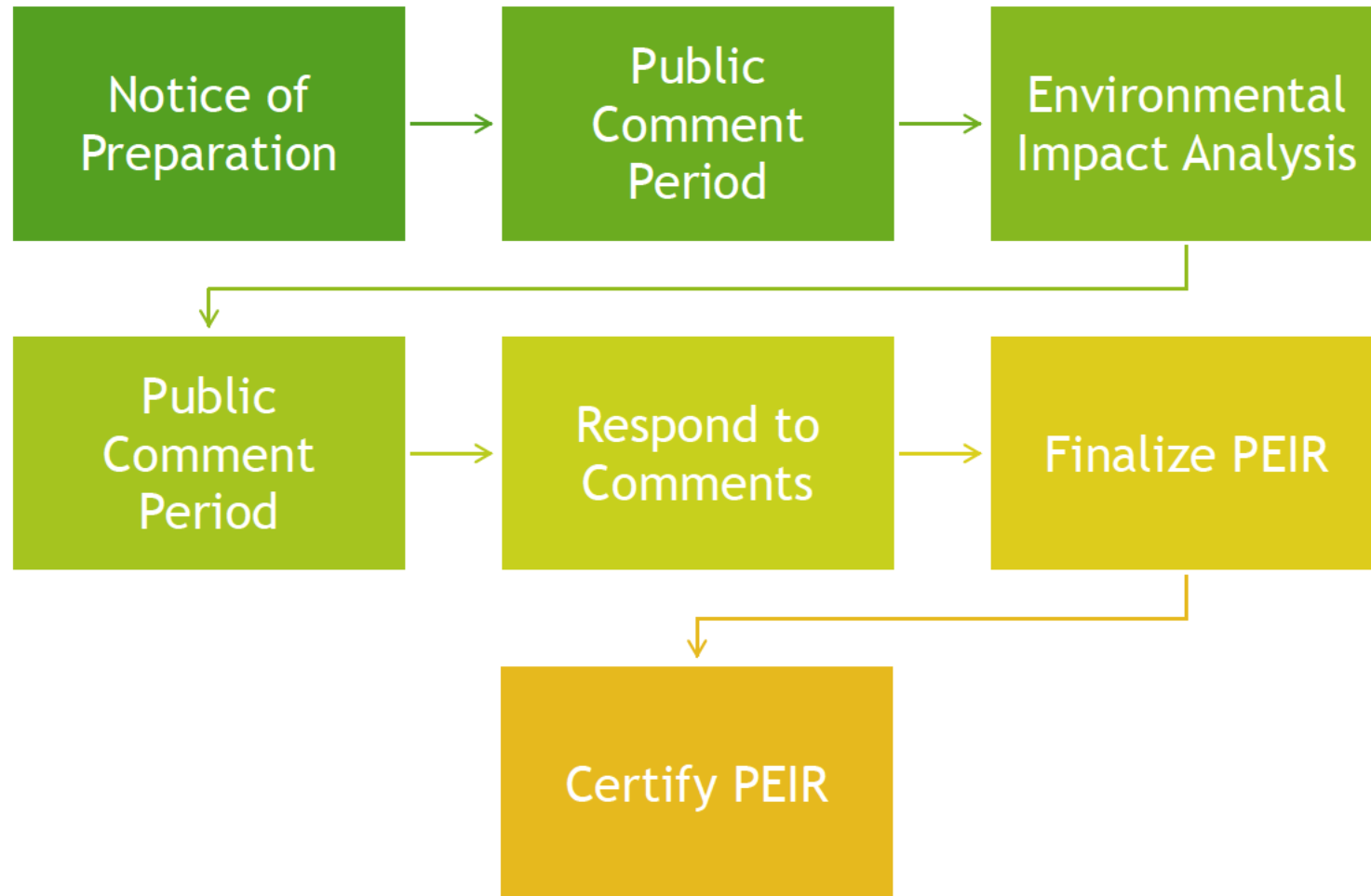
# **Socially Equitable Cannabis Program**



# Program Milestones



# PEIR Process For Comprehensive Program



Retail



Manufacturing



Testing



Cultivation

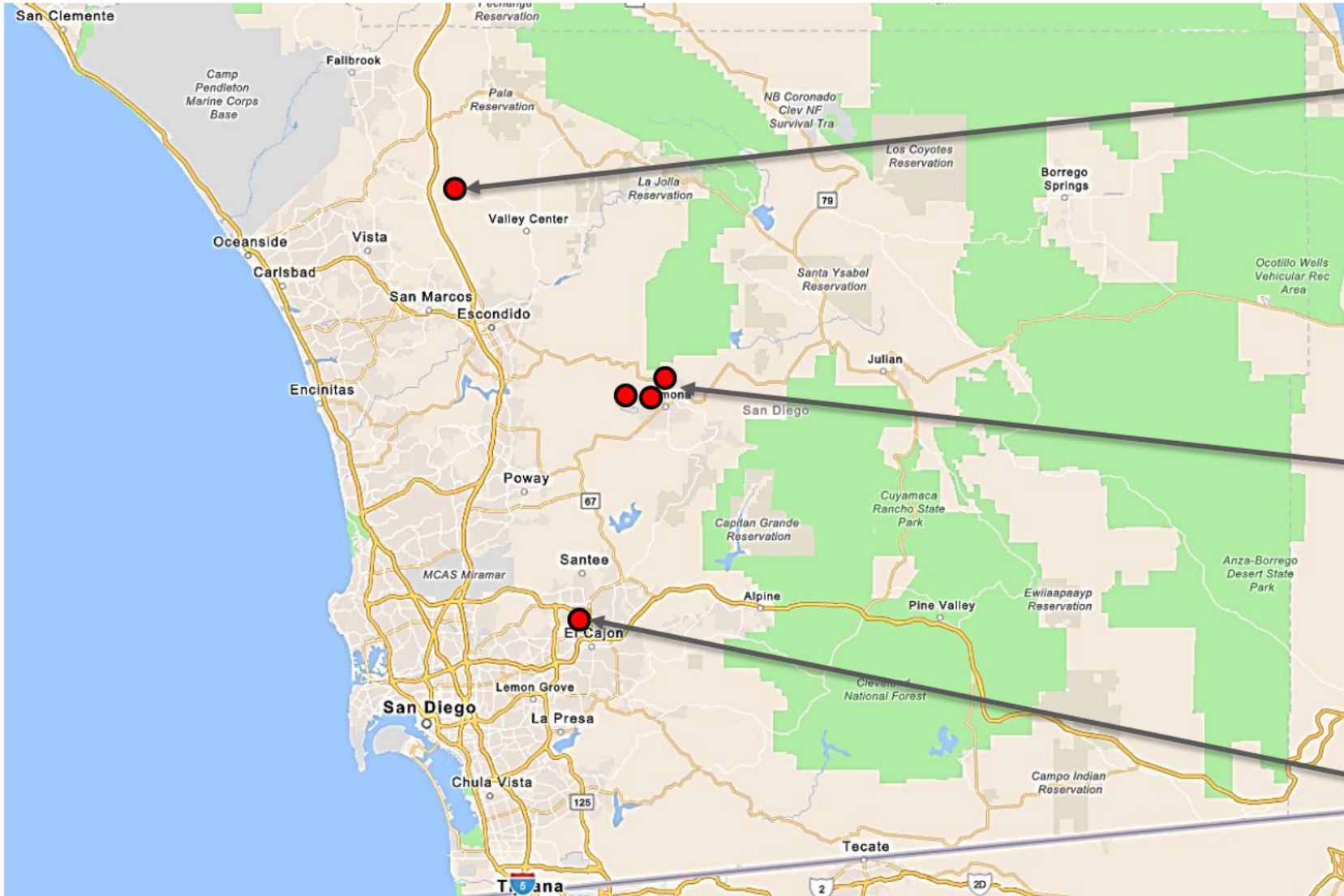


Microbusiness



Distribution

# Locations of Existing Dispensaries



San Diego  
Natural/Outco

Releaf Meds

Olive Tree  
Wellness/ JAXX  
Cannabis

Ramona Cannabis  
Company

Outliers Collective



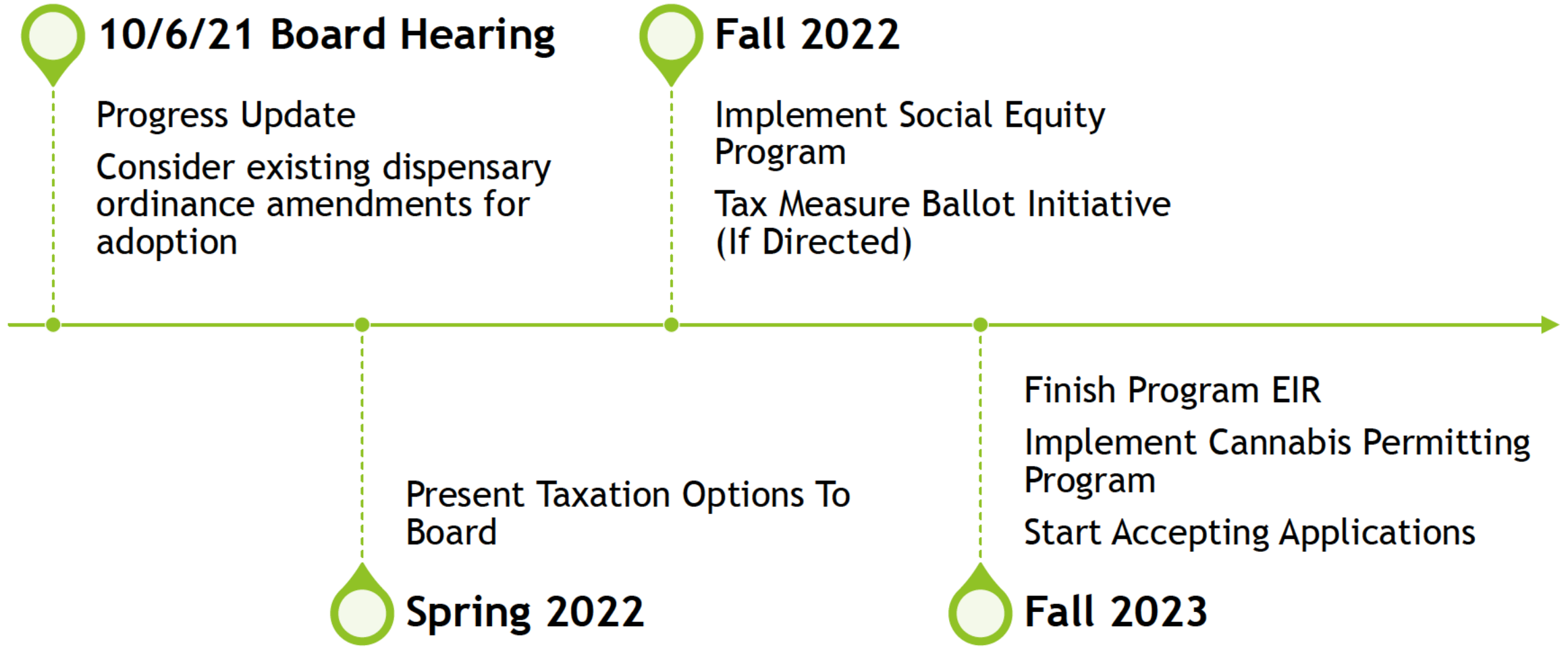
# Ordinance Changes Being Considered for Adoption on October 6, 2021

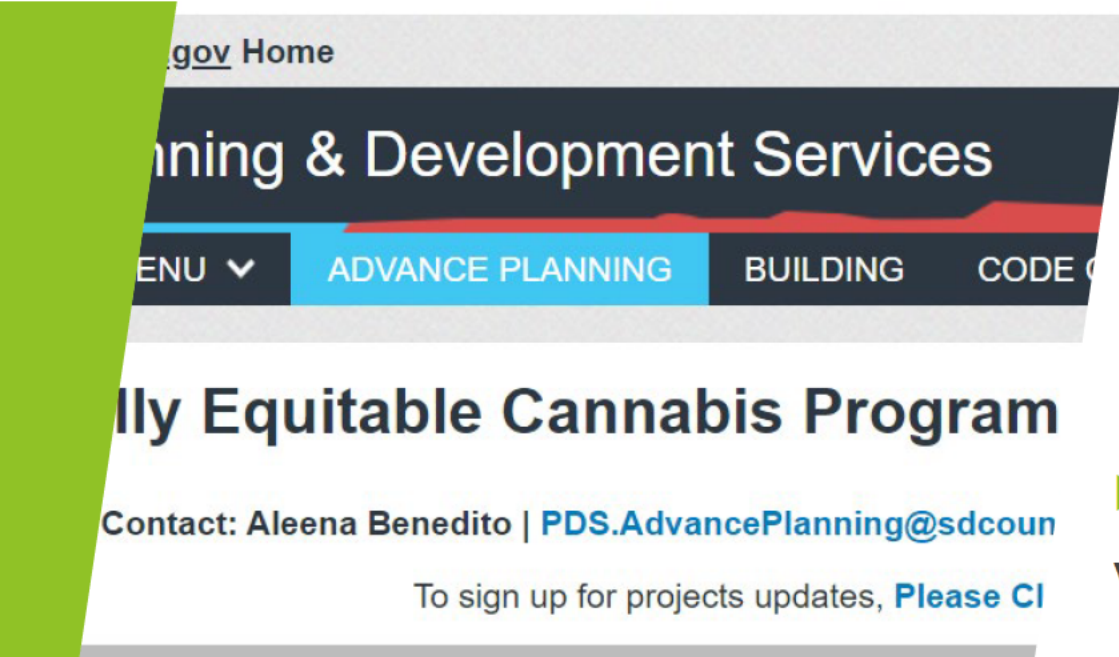
	Zoning Ord.	Reg. Code	Plan. Comm. Recommendation
Transition to Adult-Use	X	X	X
Remove Sunset Date	X		X
Sell Edible and Drinkable Products		X	X
Sell Branded Merchandise		X	X
10,000 Sq. Ft. Expansions via Bldg. Permit	X		
Exemption from B & S Special Designators	X		
Municipal Water for Cultivation	X	X	
Transfer of Operating Certificates	X	X	X
Update Operating Certificate Fee Structure		X	

# Progress Report to the Board on October 6, 2021

- Social Equity Program
- Taxation
- Enforcement

# Next Steps





# County Resources

## ► Website:

[www.sandiegocounty.gov/content/sdc/pds/Cannabis.html](http://www.sandiegocounty.gov/content/sdc/pds/Cannabis.html)

- Updates - Key Dates & Information
- GovDelivery (Mass Email) sign-up link

## ► Outreach Contact

Aleena Benedito

PDS, Cannabis Outreach Lead

Phone: 619-806-7282

[Aleena.Benedito@sdcounty.ca.gov](mailto:Aleena.Benedito@sdcounty.ca.gov)



# Open Discussion