

ARCHITECTURE

23562 Arnold Drive
Sonoma, California 95476
T 707.935.7944
F 707.935.6618
www.STRATAap.com

LOCATION
16138 HIGHLAND VALLEY ROAD
ESCONDIDO, CALIFORNIA

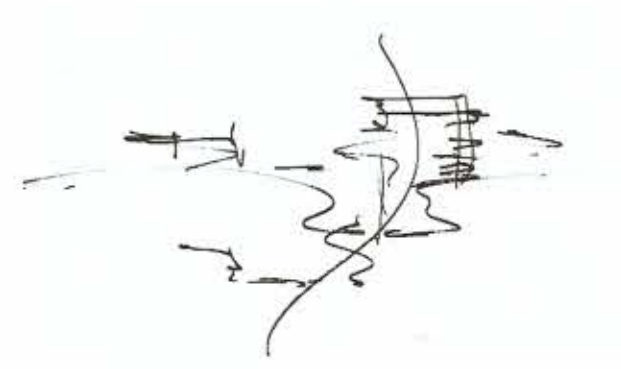
PARCEL:
PAR 3, 56.45 AC TMK 276-101-05-00

REVISIONS

1	USE PERMIT SUBMITTAL #2	05.28.2018
2	USE PERMIT SUBMITTAL #3	04.30.2019
3	--	--

SHEET TITLE

VISUAL RESOURCES
& AESTHETICS



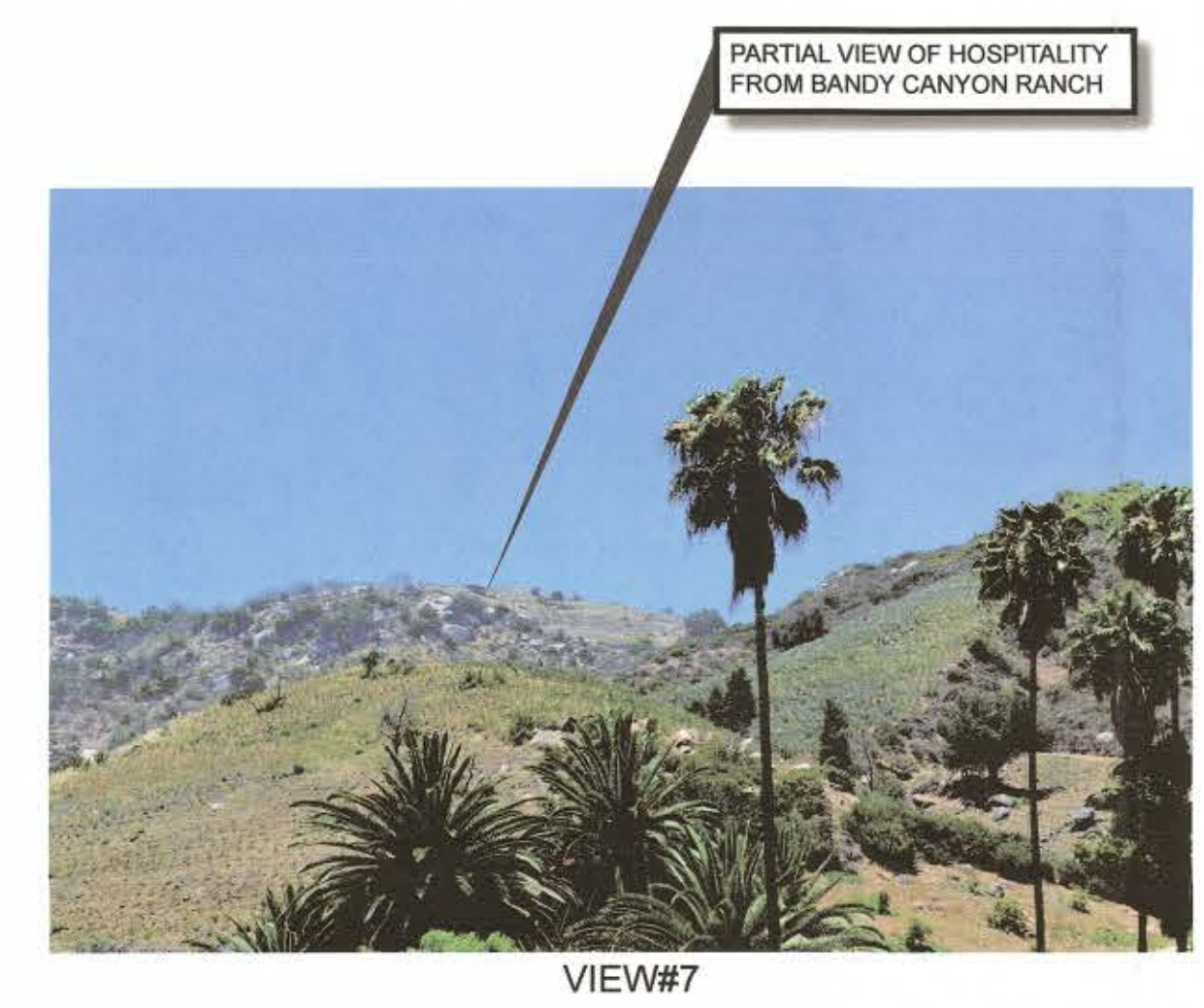
PROPOSED
NEW SMALL WINERY

CHECKED BY: 001
DRAWN BY: 002
SCALE:
DATE: MAY 28, 2018
PROJECT NO. 199-15

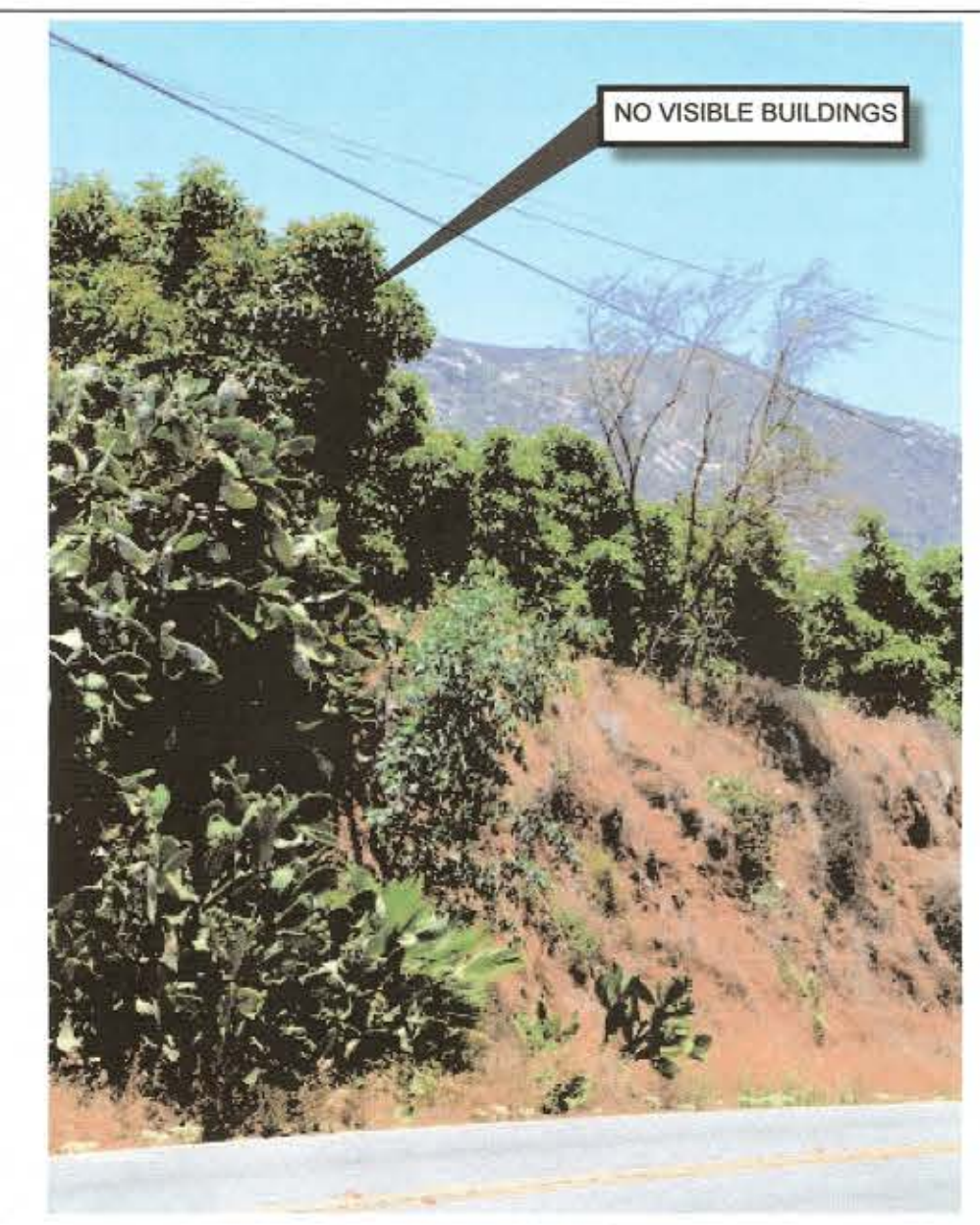
G0.02

DRAWING NO.

PHOTOS TAKEN WITH 50MM LENS

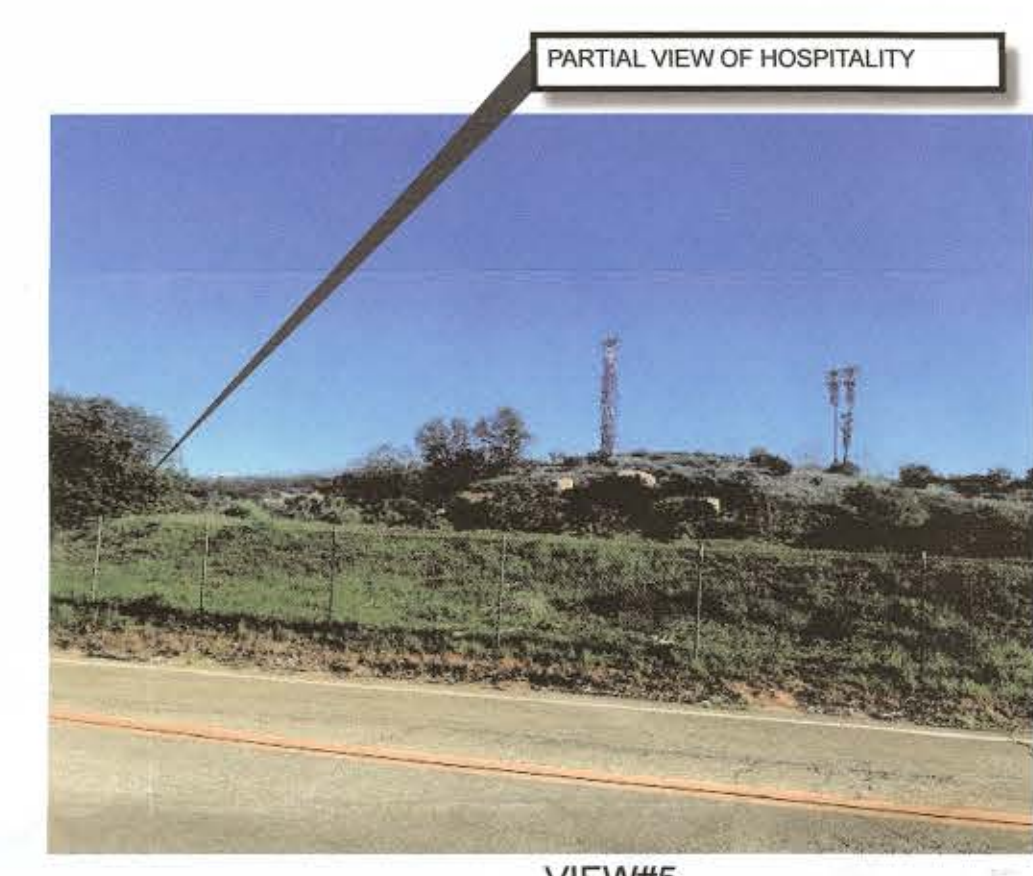


VIEW#7



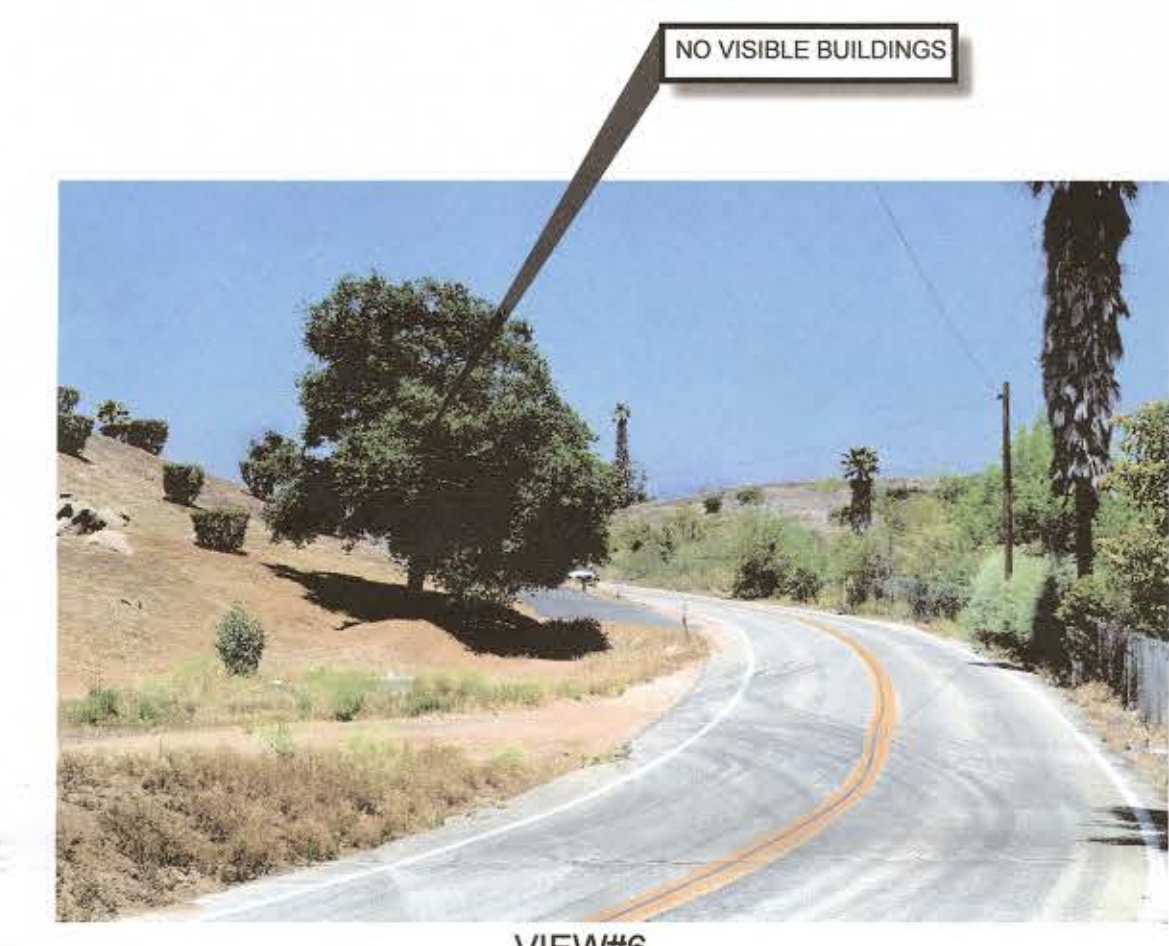
NO VISIBLE BUILDINGS

VIEW#8



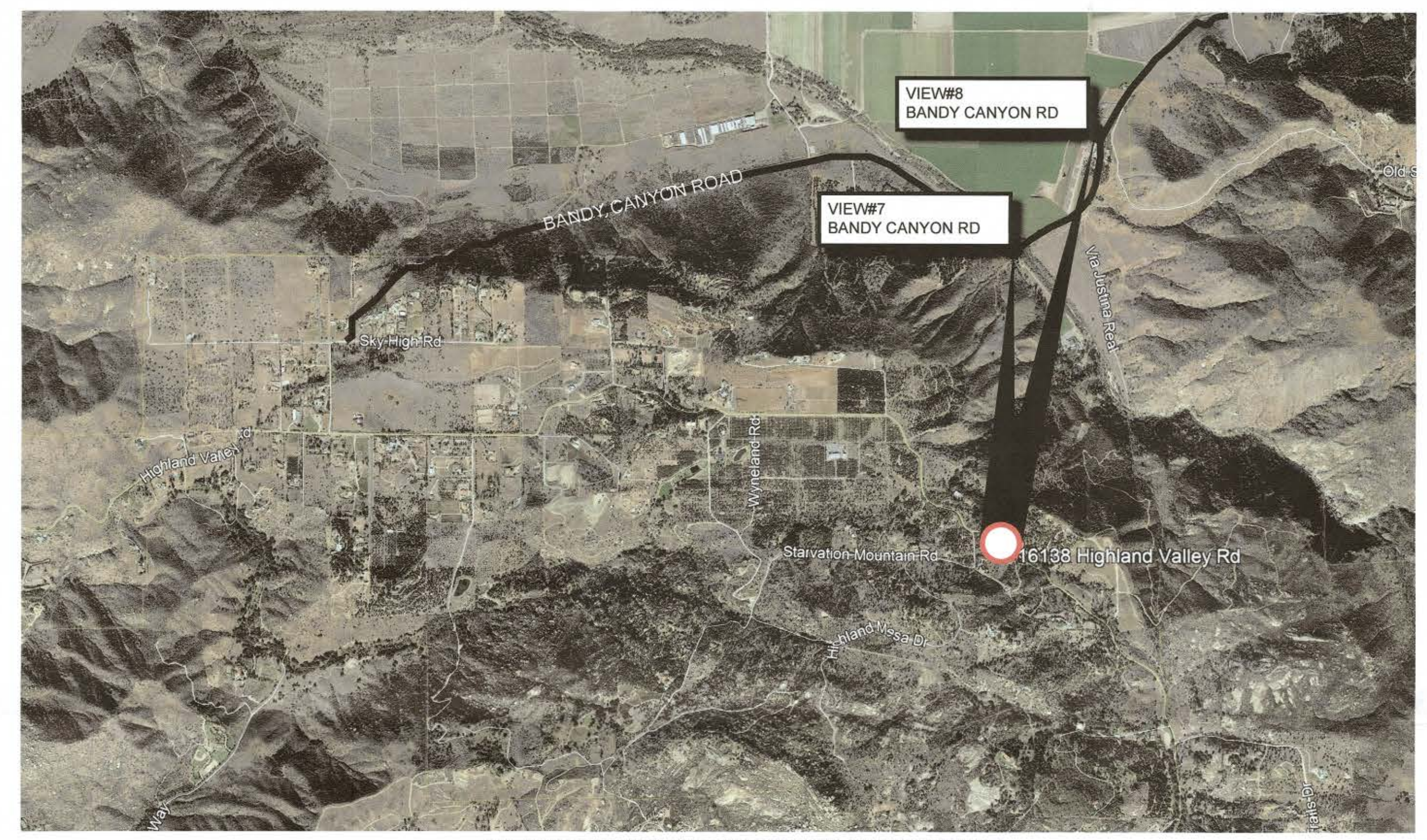
PARTIAL VIEW OF HOSPITALITY

VIEW#5

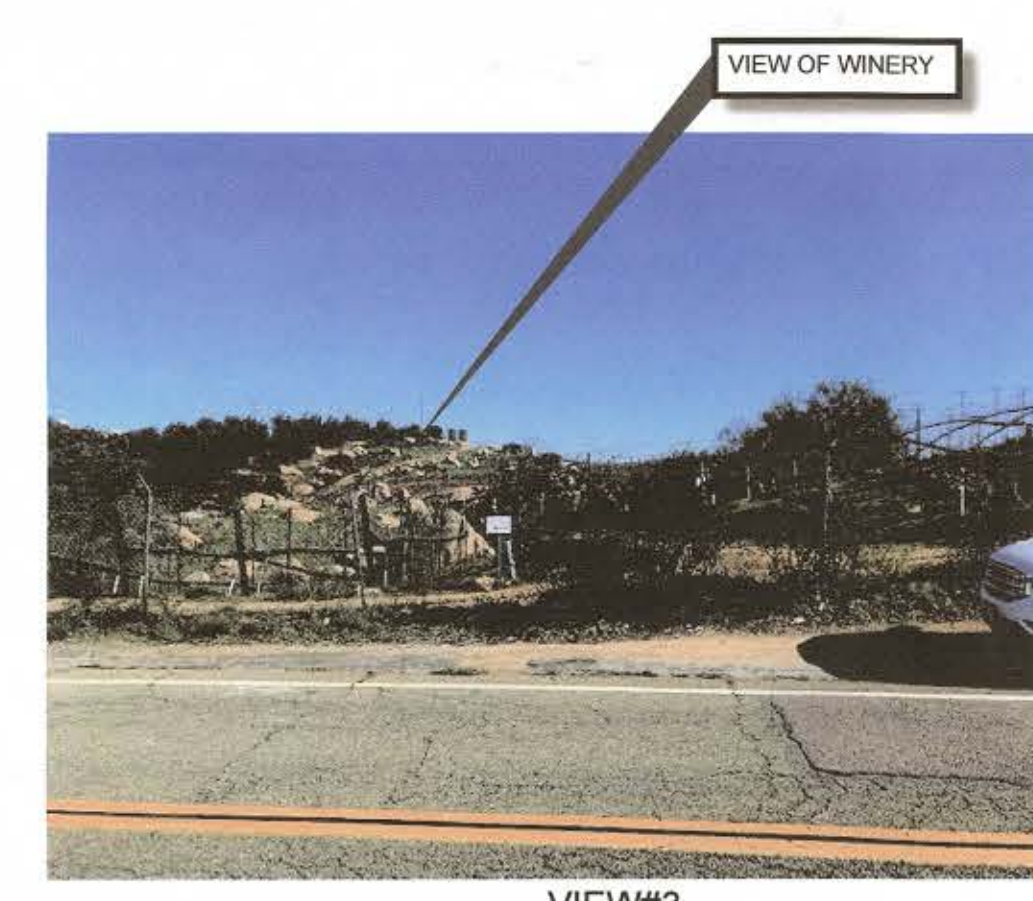


NO VISIBLE BUILDINGS

VIEW#6

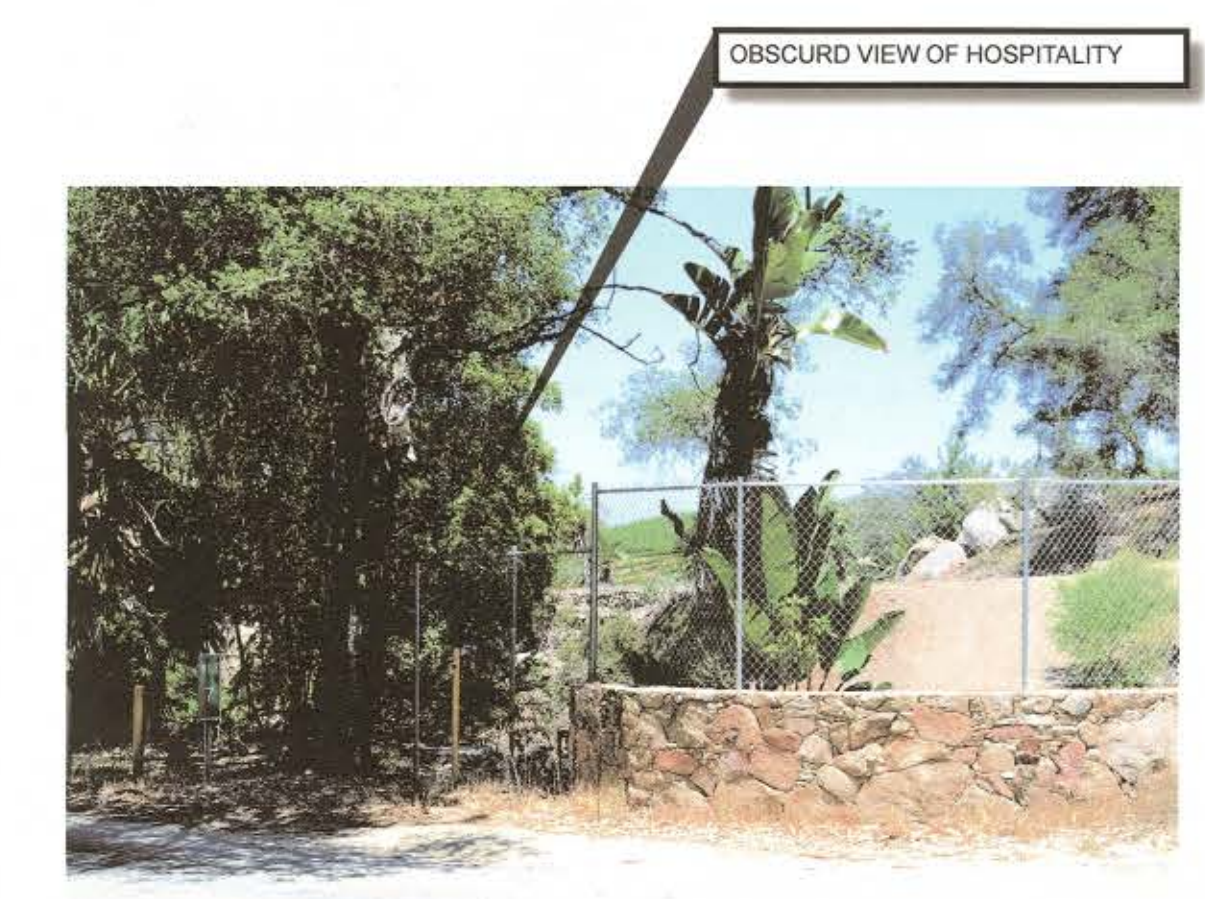


VIEW LOCATIONS OF HOSPITALITY BUILDING
(LOCATIONS ON BANDY CANYON ROAD)



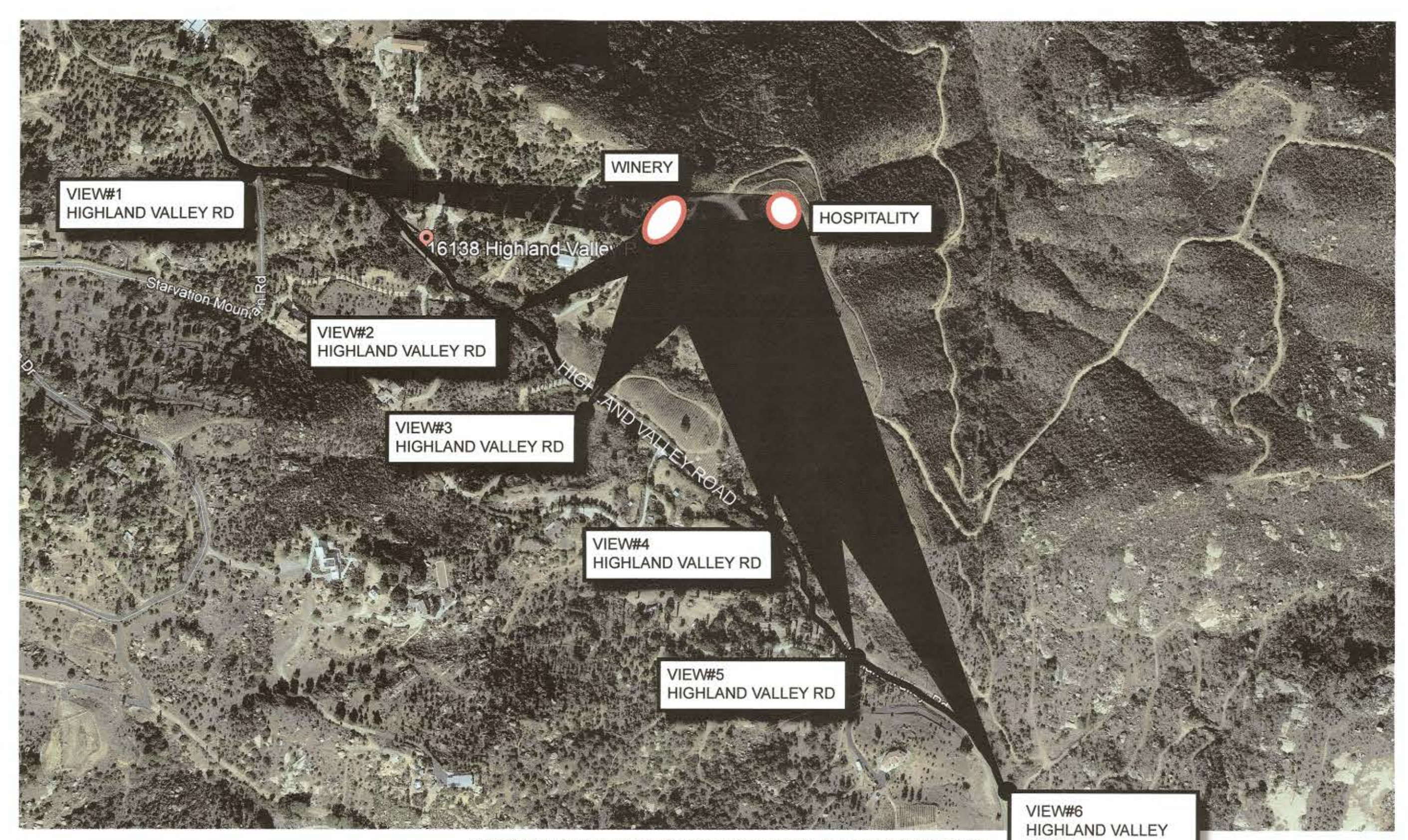
VIEW OF WINERY

VIEW#3

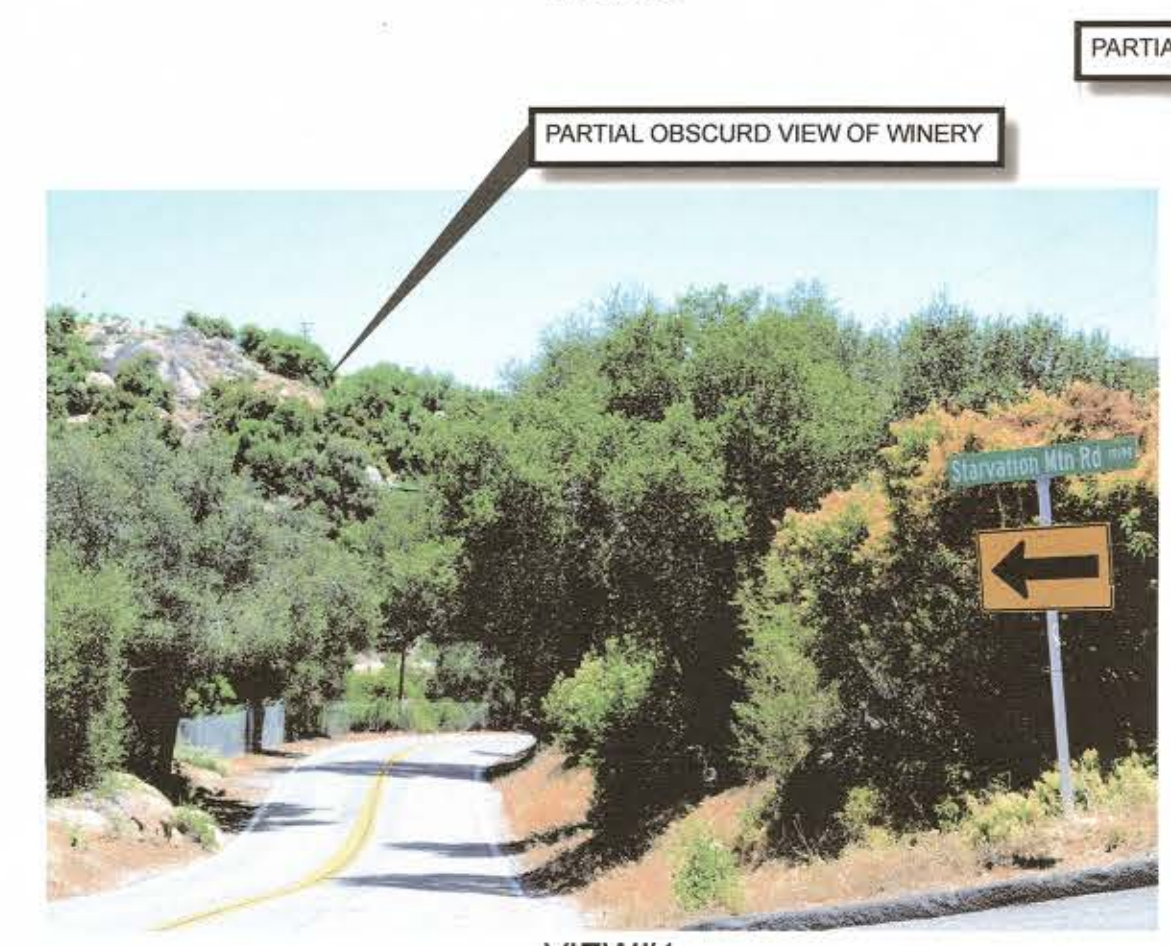


OBSCURED VIEW OF HOSPITALITY

VIEW#4

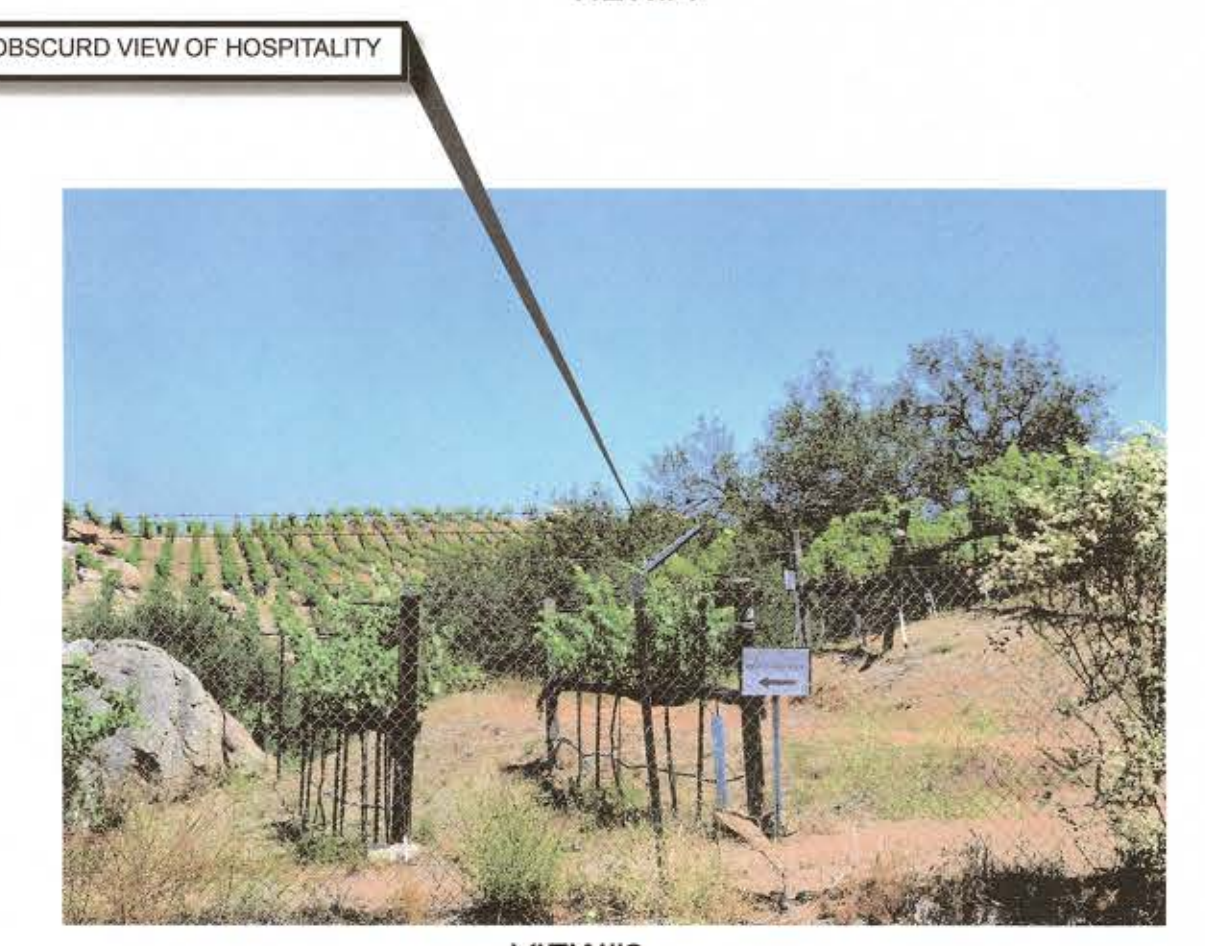


VIEW LOCATIONS OF WINERY & HOSPITALITY
(LOCATIONS ON HIGHLAND VALLEY ROAD)



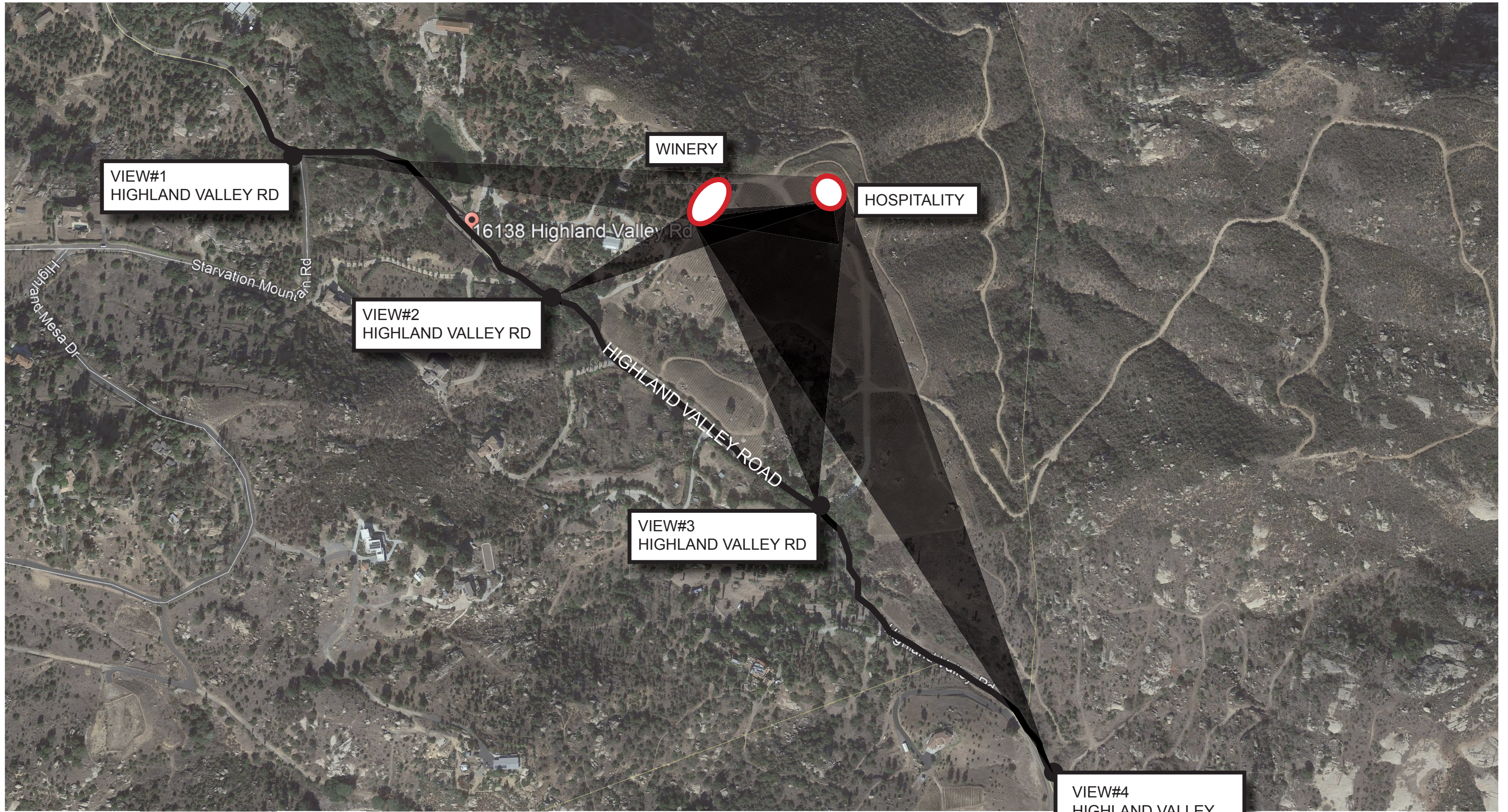
PARTIAL OBSCURED VIEW OF WINERY

VIEW#1



PARTIAL OBSCURED VIEW OF HOSPITALITY

VIEW#2



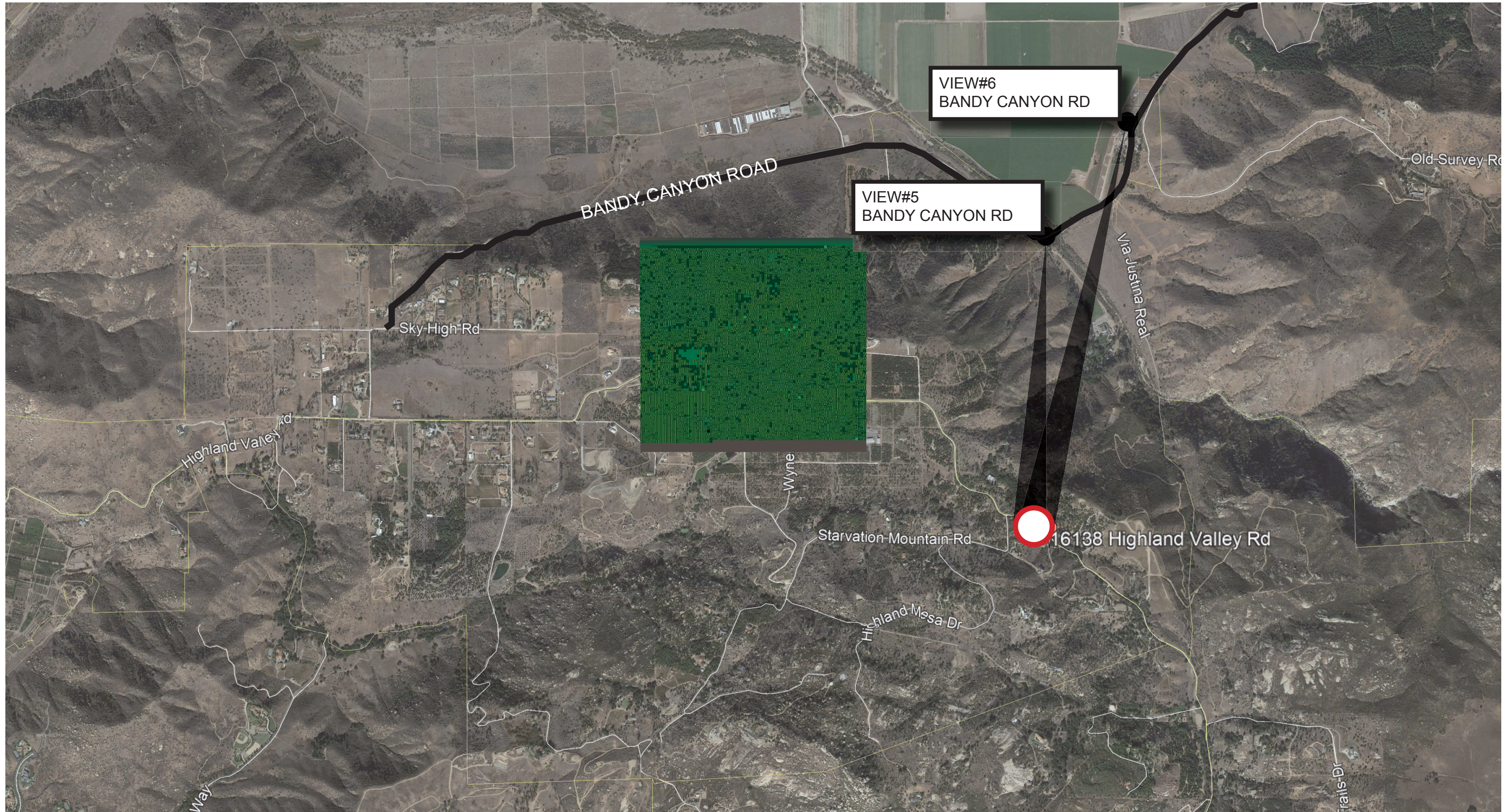
VIEW LOCATIONS OF WINERY & HOSPITALITY
(LOCATIONS ON HIGHLAND VALLEY ROAD)

VISUAL RESOURCES & AESTHETICS

DATE: 07.02.18

STRATA  ARCHITECTURE PLANNING MANAGEMENT

SDC PDS RCVD 08-28-18
AD16-023



VIEW LOCATIONS OF HOSPITALITY BUILDING
(LOCATIONS ON BANDY CANYON ROAD)

VISUAL RESOURCES & AESTHETICS

DATE: 07.02.18

PARTIAL OBSCURD VIEW OF HOSPITALITY

PARTIAL OBSCURD VIEW OF WINERY



VIEW#1



VIEW#2

VIEW LOCATIONS OF WINERY & HOSPITALITY
(LOCATIONS ON HIGHLAND VALLEY ROAD)
50MM

VISUAL RESOURCES & AESTHETICS

DATE: 07.02.18

OBSCURD VIEW OF HOSPITALITY



VIEW#3

NO VISIBLE BUILDINGS



VIEW#4

VIEW LOCATIONS OF WINERY & HOSPITALITY
(LOCATIONS ON HIGHLAND VALLEY ROAD)
50MM

VISUAL RESOURCES & AESTHETICS

DATE: 07.02.18

PARTIAL VIEW OF HOSPITALITY
FROM BANDY CANYON RANCH



VIEW#5

NO VISIBLE BUILDINGS



VIEW#6

VIEW LOCATIONS OF WINERY & HOSPITALITY
(LOCATIONS ON BANDY CANYON ROAD)
50MM