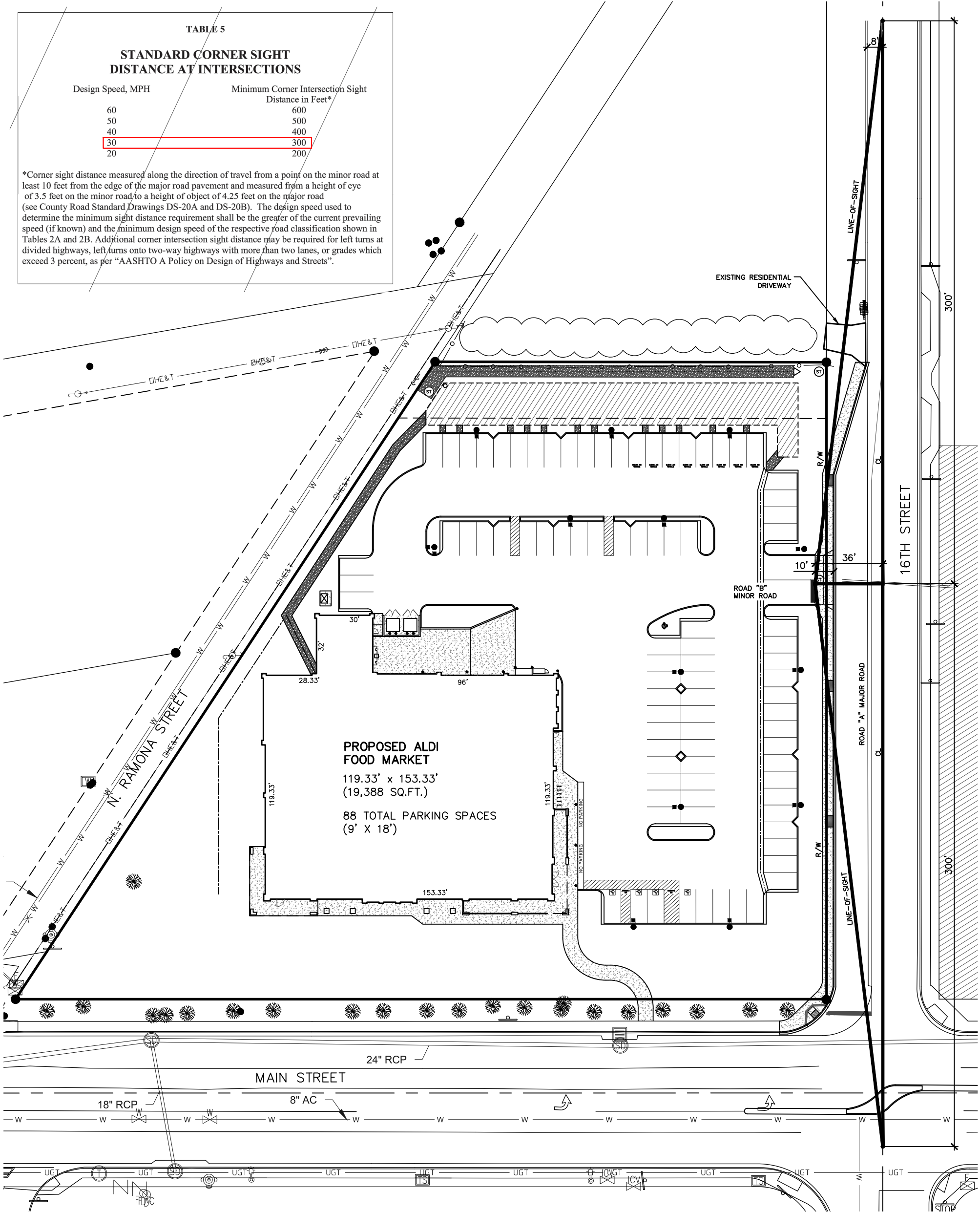


TABLE 5

STANDARD CORNER SIGHT
DISTANCE AT INTERSECTIONS

Design Speed, MPH	Minimum Corner Intersection Sight Distance in Feet*
60	600
50	500
40	400
30	300
20	200

*Corner sight distance measured along the direction of travel from a point on the minor road at least 10 feet from the edge of the major road pavement and measured from a height of eye of 3.5 feet on the minor road to a height of object of 4.25 feet on the major road (see County Road Standard Drawings DS-20A and DS-20B). The design speed used to determine the minimum sight distance requirement shall be the greater of the current prevailing speed (if known) and the minimum design speed of the respective road classification shown in Tables 2A and 2B. Additional corner intersection sight distance may be required for left turns at divided highways, left turns onto two-way highways with more than two lanes, or grades which exceed 3 percent, as per "AASHTO A Policy on Design of Highways and Streets".



THERE IS 300 FEET OF UNOBSTRUCTED INTERSECTIONAL SIGHT DISTANCE IN THE BOTH DIRECTIONS ALONG 16TH STREET FROM THE PROPOSED DRIVEWAY SERVING THE PROJECT, IN ACCORDANCE WITH THE METHODOLOGY DESCRIBED IN TABLE 5 OF THE MARCH 2012 COUNTY OF SAN DIEGO PUBLIC ROAD STANDARDS. THESE SIGHT DISTANCES MEET OR EXCEED THE REQUIRED INTERSECTIONAL SIGHT DISTANCE REQUIREMENTS OF 300 FT AS DESCRIBED IN TABLE 5 BASED ON A SPEED OF 30 MPH, WHICH I HAVE VERIFIED TO BE THE HIGHER OF THE PREVAILING SPEED OR THE MINIMUM DESIGN SPEED OF THE ROAD CLASSIFICATION. I HAVE EXERCISED RESPONSIBLE CHARGE FOR THE CERTIFICATION AS DEFINED IN SECTION 6703 OF THE PROFESSIONAL ENGINEERS ACT OF THE CALIFORNIA BUSINESS AND PROFESSIONS CODE.

Ryan Vlieg

