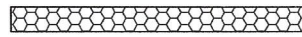
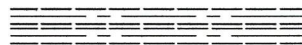


# LEGEND



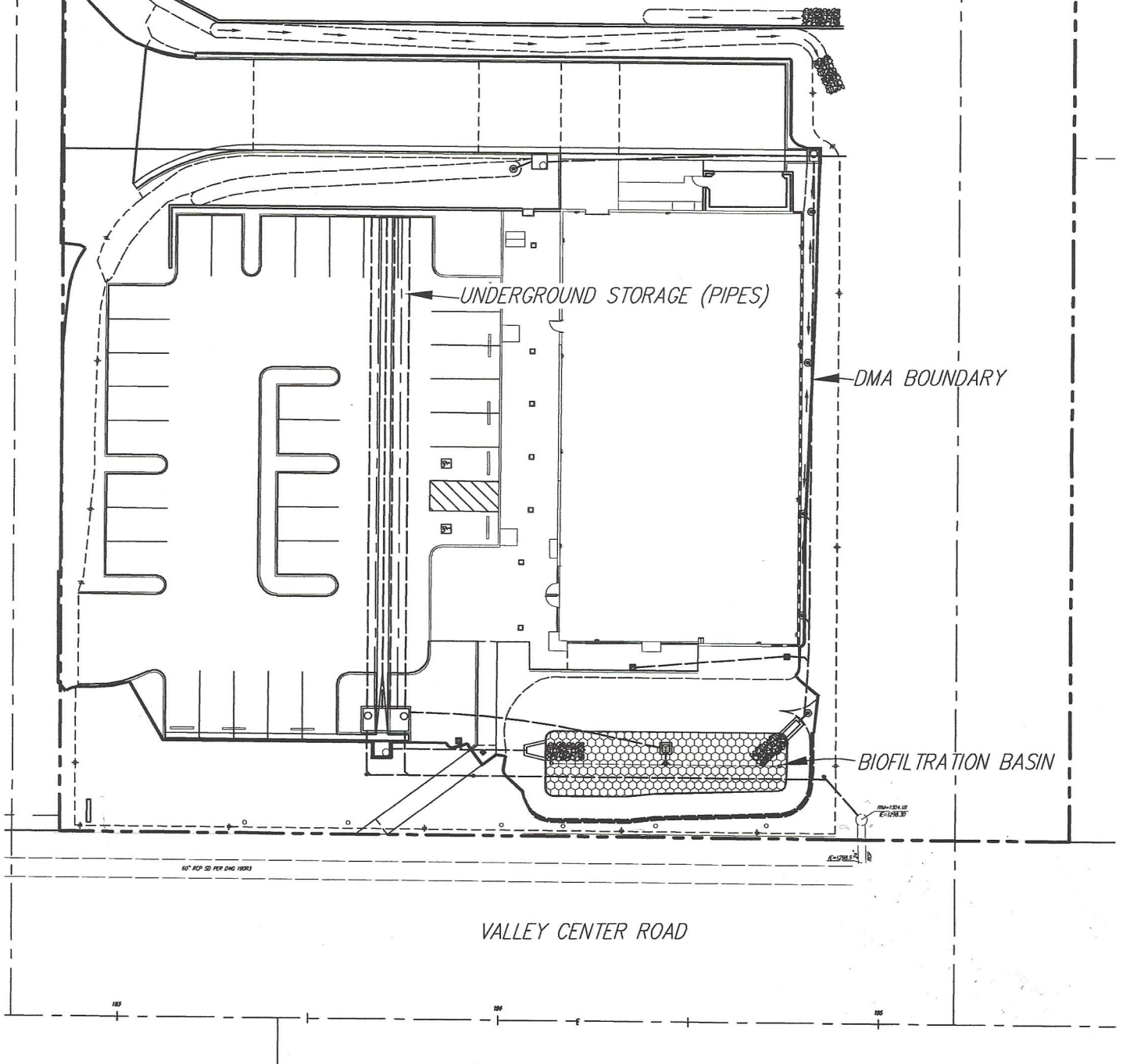
BIOFILTRATION BASIN



UNDERGROUND STORAGE (PIPES)



DMA BOUNDARY



SCALE: 1"=40'

SITE MAP - EXHIBIT 'C'  
AUTOZONE STORE 6173  
STORM WATER MAINTENANCE EXHIBIT

**ATTACHMENT 4**

**County of San Diego PDP Structural BMP Verification for  
Permitted Land Development Projects**



This page was left intentionally blank.

**County of San Diego PDP-IVF:****Installation Verification Form for Priority Development Projects (PDPs)**

This form must be accepted by the County prior to the release of construction permits or granting of occupancy for applicable portions of a Priority Development Project (PDP). Applicants are responsible for providing all requested information. Do not leave any fields blank; indicate N/A for any requested item that is not applicable.

**PART 1 General Project and Applicant Information****Table 1: Project and Applicant Information**

<b>A. Project Summary Information</b>		<b>ID No. IVF-20__-__</b> <b>To be assigned by DPW-WPP</b>
<b>Project Name</b>	<b>AutoZone</b>	
<b>Record ID</b> (e.g., grading/improvement plan number, building permit)	PDS2017-LDGRMJ-30144	
<b>Project Address</b>	<b>Valley Center Road and Old Mirar de Valle</b>	
<b>Assessor's Parcel Number(s) APN(s)</b>	186-270-35	
<b>Project Watershed</b> (complete Hydrologic Unit, Area, and Subarea Name with Numeric Identifier)	San Luis Rey Hydrologic Unit, Lower San Luis Hydrologic Area (903.11)	
<b>B. Owner Information</b>		
<b>Name</b>	<b>Bell Holdings, LLC</b>	
<b>Address</b>	<b>P.O. Box 642, Rancho Santa Fe, CA 92067</b>	
<b>Email Address</b>	<b>steveflynn@aol.com</b>	
<b>Phone Number</b>	<b>(858) 756-3589</b>	





## County of San Diego PDP-IVF:

### Installation Verification Form for Priority Development Projects (PDPs)

#### PART 2 DMA and BMP Inventory Information

Use this table to document Structural BMPs (S-BMPs) and Significant Site Design BMPs (SSD-BMPs) for the PDP. All DMAs are required to have at least one Structural BMP or Significant Site Design BMP.

- In **Part A**, list all Structural BMPs (including both Pollutant Control and/or Hydromodification as applicable) by DMA.
- Complete **Part B** for all DMAs that contain only Significant Site Design BMPs. SSD-BMPs are Site Design BMPs credited in **Worksheet B-1.1** of the BMP Design Manual for Design Capture Volume (DCV) reductions. Only Tree Wells and Dispersion Areas should be included in this inventory.
- For any DMA that contains both S-BMPs and SD-BMPs, document only the S-BMPs; you do not need to include the SD-BMPs.
- The information provided for each BMP in the table must match that provided in the Stormwater Quality Management Plan (SWQMP), construction plans, maintenance agreements, and other relevant project documentation.

Table 3: Required Information for Structural BMPs and Significant Site Design BMPs

DMA #	BMP Information		Maintenance Category	Maintenance Agreement or Maintenance Notification Recorded Doc. #	Construction Plan Sheet #	Landscape Plan # PDS2018-LP17-096W1 & Sheet # (For Vegetated BMPs Only)	FOR DPW-WPP USE ONLY <i>Reviewer concurs that the BMP(s) may be accepted into inventory (date and initial)</i>
	Quantity	Description/Type of Structural BMP BMP ID #(s)					
<b>Part A Structural BMPs</b>							
DMA1	1	Biofiltration Basin	BR1	1		4,5,7,11&13	
DMA1	1	Underground Storage / Flow Control	UG1	1		6,7,8,11-13	
Add rows as needed							
<b>Part B Significant Site Design BMPs</b>							
		Choose an item.					
		Choose an item.					
		Choose an item.					
Add rows as needed							





## County of San Diego PDP-IVF:

### Installation Verification Form for Priority Development Projects (PDPs)

#### PART 3 Required Attachments for All BMPs Listed in Table 3

For ALL projects, submit the following to the County inspector (check all that are attached):

- ☐ Photographs: A photograph of each fully constructed S-BMP or SSD-BMP (or group of BMPs).
- ☐ Maintenance Agreements: Copies of all approved and recorded Storm Water Maintenance Agreements (SWMAs) or Maintenance Notifications (MNs) for all S-BMPs.

Note: All BMPs proposed for County ownership will remain the responsibility of the owner listed on **Page 1** until a signed Letter of Acceptance of Completion is received by the DPW Watershed Protection Program.

For Grading and Improvement projects only, ALSO submit:

- ☐ Landscape Plans: An 11" X 17" copy of the most current applicable Landscape Plan sheets where the BMPs are required to be vegetated, including:
  - ☐ The Certification of Completion (Form 407), AND
  - ☐ The Certificate of Approval from PDS Landscape Architect

Note: For each Landscape Plan, the sheets submitted must show the location of each verified as-built BMP.

- ☐ Construction Plans: An 11" X 17" copy of the most current applicable approved Construction Plan sheets:
  - ☐ Grading Plans, AND/OR
  - ☐ Improvement Plans, AND/OR
  - ☐ Precise Grading Plan(s) (only for residential subdivisions with tract homes), AND/OR
  - ☐ Other (Please specify) [Click here to enter text.](#)

Note: For each Construction Plan, the sheets submitted must incorporate all of the following:

- ☐ A BMP Table, AND
- ☐ A plan/cross-section of each verified as-built BMP, AND
- ☐ The location of each verified as-built BMP

#### Required only for Verifications for Partial Record Plans

- ☐ If this is a partial record plan verification, please include the following:
  - ☐ A list of previously submitted Verification Forms (**Table 2, part A**)
  - ☐ A map of DMAs and BMPs (**Table 2, part B**)

#### PART 4 Engineer of Work Certification

Last updated: April 17, 2018

LUEG:SW PDP SWQMP – Attachments

Page 4 of 6



**County of San Diego PDP-IVF:**

**Installation Verification Form for Priority Development Projects (PDPs)**

---

By signing below, I certify that the BMP(s) listed in Table 3 of this Verification Form have been constructed and all are in substantial conformance with the approved plans and applicable regulations. I understand the County reserves the right to inspect the above BMPs to verify compliance with the approved plans and Watershed Protection Ordinance (WPO). Should it be determined that the BMPs were not constructed to plan or code, corrective actions may be necessary before permits can be closed.

Please sign and provide your seal below.

Professional Engineer's Printed Name:

Click here to enter text.

Email: Click here to enter text.

Phone Number: Click here to enter text.

Professional Engineer's Signed Name:

\_\_\_\_\_

Date: Click here to enter text.

[SEAL]



**County of San Diego PDP-IVF:**

**Installation Verification Form for Priority Development Projects (PDPs)**

---

**COUNTY - OFFICIAL USE ONLY:**

For County Inspectors

County Department: \_\_\_\_\_

Date verification received from EOW: \_\_\_\_\_

By signing below, County Inspector concurs that every noted BMP has been installed per plan.

Inspector Name: \_\_\_\_\_

Inspector's Signature: \_\_\_\_\_ Date: \_\_\_\_\_

For Building Division Only

Inspection Supervisor Name: \_\_\_\_\_

Inspector Supervisor's Signature: \_\_\_\_\_ Date: \_\_\_\_\_

PDCI & Building, along with the rest of this package, please provide to DPW WPP:

- ☐ A copy of the final accepted SWQMP and any accepted addendum

For Watershed Protection Program Only

Date Received: \_\_\_\_\_

WPP Submittal Reviewer: \_\_\_\_\_

WPP Reviewer concurs that the BMPs accepted in **Part 2** above may be entered into inventory.

WPP Reviewer's Signature: \_\_\_\_\_ Date: \_\_\_\_\_



**ATTACHMENT 5****Copy of Plan Sheets Showing Permanent Storm Water BMPs,  
Source Control, and Site Design**

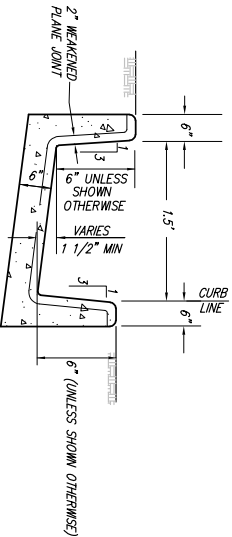
This is the cover sheet for Attachment 5.

**Use this checklist to ensure the required information has been included on the plans:**

**The plans must identify:**

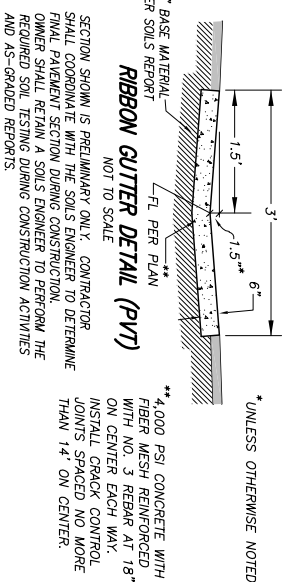
- ☒ Structural BMP(s) with ID numbers matching Step 6 Summary of PDP Structural BMPs
- ☒ The grading and drainage design shown on the plans must be consistent with the delineation of DMAs shown on the DMA exhibit
- ☒ Details and specifications for construction of structural BMP(s)
- ☐ Signage indicating the location and boundary of structural BMP(s) as required by County staff
- ☒ How to access the structural BMP(s) to inspect and perform maintenance
- ☒ Features that are provided to facilitate inspection (e.g., observation ports, cleanouts, silt posts, or other features that allow the inspector to view necessary components of the structural BMP and compare to maintenance thresholds)
- ☒ Manufacturer and part number for proprietary parts of structural BMP(s) when applicable
- ☒ Maintenance thresholds specific to the structural BMP(s), with a location-specific frame of reference (e.g., level of accumulated materials that triggers removal of the materials, to be identified based on viewing marks on silt posts or measured with a survey rod with respect to a fixed benchmark within the BMP)
- ☒ Recommended equipment to perform maintenance
- ☒ When applicable, necessary special training or certification requirements for inspection and maintenance personnel such as confined space entry or hazardous waste management
- ☒ Include landscaping plan sheets showing vegetation requirements for vegetated structural BMP(s)
- ☒ All BMPs must be fully dimensioned on the plans
- ☒ When proprietary BMPs are used, site-specific cross section with outflow, inflow, and model number must be provided. Photocopies of general brochures are not acceptable.
- ☒ Include all source control and site design measures described in Steps 4 and 5 of the SWQMP. Can be included as a separate exhibit as necessary.

This page was left intentionally blank.



**MODIFIED 6" G-2 CURB AND GUTTER W/ TRANSITIONAL FLOW LINE (PVT)**  
NOT TO SCALE

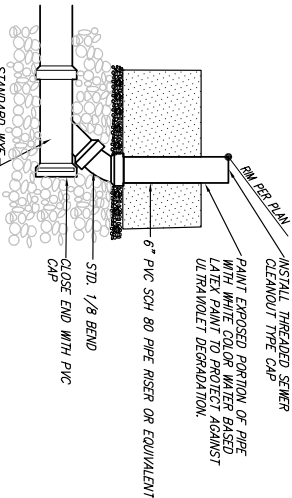
- NOTES:  
1. CONCRETE SHALL BE 500-C-2500.  
2. SEE SPREAD C-10 FOR JOINT DETAILS.  
3. SLOPE TOP OF CURB 1/4" PER FOOT TOWARDS GUTTER.



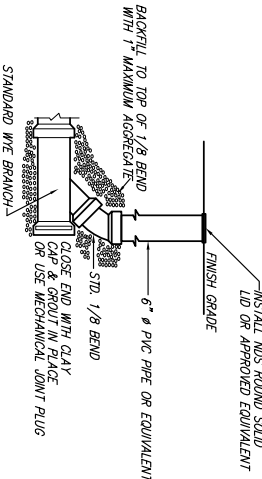
**REBBO GUTTER DETAIL (PVT)**  
NOT TO SCALE

SECTION SHOWN IS PRELIMINARY ONLY. CONTRACTOR SHALL COORDINATE WITH THE SOILS ENGINEER TO DETERMINE FINAL PAVEMENT SECTION DURING CONSTRUCTION. OWNER SHALL RETAIN A SOILS ENGINEER TO PERFORM THE REQUIRED SOIL TESTING DURING CONSTRUCTION ACTIVITIES AND AS-GRADDED REPORTS.

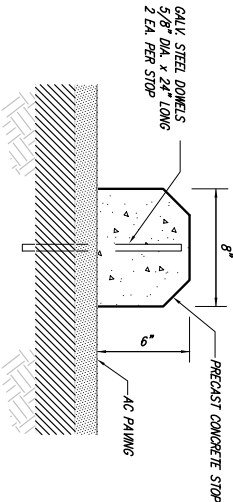
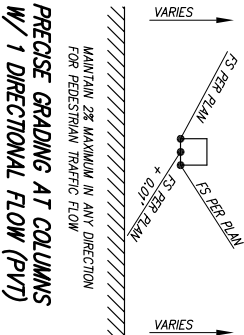
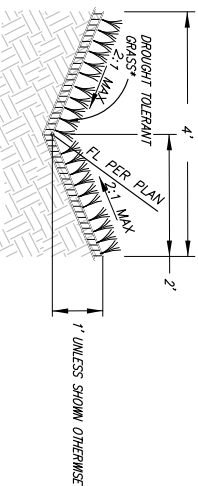
**STORM DRAIN CLEANOUT W/IN BIOFILTRATION BASIN (PVT)**  
NOT TO SCALE



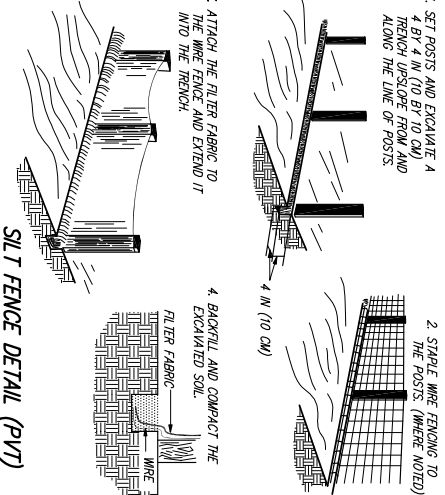
**STORM DRAIN CLEANOUT W/IN LANDSCAPE (PVT)**  
NOT TO SCALE



**BLADED/VEGETATED SWALE (PVT)**  
NOT TO SCALE



**CONCRETE WHEEL STOP (PVT)**  
NOT TO SCALE



**SILT FENCE DETAIL (PVT)**  
NOT TO SCALE

- SILT FENCE NOTES:**
1. POSTS FOR SILT FENCES SHALL BE EITHER 4-INCH-DIAMETER WOOD OR EQUIVALENT WITH A MINIMUM LENGTH OF 5 FEET. POSTS SHALL BE SPACED A MAXIMUM OF 10 FEET APART AND DRIVEN SECURELY INTO THE GROUND (MINIMUM OF 12 INCHES). 2" DIA. WOOD OR EQUIVALENT MAY BE USED PROVIDED POST SPACING DOES NOT EXCEED 4'.
  2. A TRENCH SHALL BE EXCAVATED APPROXIMATELY 4 INCHES WIDE AND 4 INCHES DEEP ALONG THE LINE OF POSTS.
  3. THE FILTER FABRIC SHALL BE STAPLED OR WIED TO THE POST AND 8 INCHES ABOVE THE FABRIC SHALL EXTEND INTO THE TRENCH. THE FABRIC SHALL NOT EXTEND MORE THAN 36 INCHES ABOVE THE ORIGINAL GROUND SURFACE.
  4. THE TRENCH SHALL BE BACKFILLED AND THE SOIL COMPACTED OVER THE TOP OF THE FILTER FABRIC.
  5. THE MAXIMUM DRAINAGE AREA BEHIND THE SILT FENCE SHALL BE 1.0 ACRE.
  6. THE MAXIMUM SLOPE LENGTH BEHIND THE BARRIER SHALL BE 100 FEET.

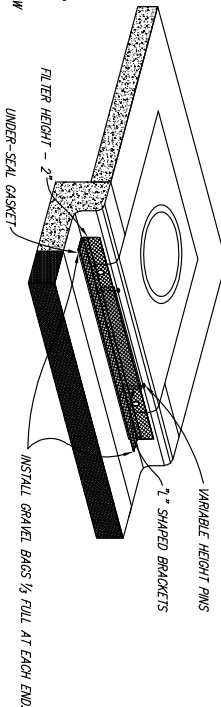
1212 CAST IRON PARKWAY GRADE WT. 28#	1212 TOP SECTION WT. 275#	1212 LOWER SECTION WT. 275#	1212 LOWER SECTION WT. 275#
TOP SECTION 1212 T6 6" HT. 170 NO K.O. 1212 T12 12" HT. 275 (4) 5" X 10" 1212 T18 18" HT. 270 (4) 8" X 12" 1212 T24 24" HT. 430 (4) 8" X 15" 1212 T28 28" HT. 380 (4) 8" X 22"	TOP SECTION 1212 T6 6" HT. 170 NO K.O. 1212 T12 12" HT. 275 (4) 5" X 10" 1212 T18 18" HT. 270 (4) 8" X 12" 1212 T24 24" HT. 430 (4) 8" X 15" 1212 T28 28" HT. 380 (4) 8" X 22"	EXTENSION HT. LBS 1212 T6 6" 170 NO K.O. 1212 T12 12" 275 (4) 5" X 10" 1212 T18 18" 270 (4) 8" X 12" 1212 T24 24" 430 (4) 8" X 15" 1212 T28 28" 380 (4) 8" X 22"	LOWER HT. LBS 1212 T6 6" 170 NO K.O. 1212 T12 12" 275 (4) 5" X 10" 1212 T18 18" 270 (4) 8" X 12" 1212 T24 24" 430 (4) 8" X 15" 1212 T28 28" 380 (4) 8" X 22"

**12"x12" BROOKS BOX CATCH BASIN OR EQUIVALENT (PVT)**  
NOT TO SCALE

**CAUTION 1:** THE LOCATION OF THE EXISTING UTILITIES ON THESE PLANS ARE APPROXIMATE AND SHALL BE VERIFIED BY THE CONTRACTOR PRIOR TO CONSTRUCTION.

INLET SIZE	FOR CUB SEGMENTS
5"	1
10"	2
15"	3
20"	4
25"	5
30"	6

- CONSTRUCTION DETAILS**
- MINIMUM 2 INTEGRATED 1" BRACKETS
  - MINIMUM 2 VARIABLE-HEIGHT PINS FOR CURB
  - FILTER HEIGHT = 2 INCHES
  - UV RESISTANT HOPE OUTER JACKET
  - UNDER-SEAL CASKET TO PREVENT UNDERFLOW
  - OC HEIGHT = 8 INCHES
  - OC LENGTH = 6.25 FEET



**INSTALLATION DETAILS**

**PLACEMENT:** PLACE CIG TIGHTLY AGAINST DRAIN OPENING WITH METAL VARIABLE HEIGHT PINS AT TOP OF CURB.

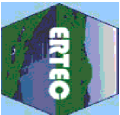
**ANCHORING:** EXTEND VARIABLE HEIGHT PINS UPWARD IF NECESSARY.

**INTERCONNECTING FOR LONG CURB OPENINGS:** OVERLAP SEGMENTS SO THE BOTTOM CASKET PROVIDES A CONTINUOUS SEAL (ONE SIDE HAS A CUT-OUT). EACH 6.25 SEGMENT FITS A 5 FOOT OPENING OR SMALLER. USE 2 SEGMENTS FOR 8 TO 10 FEET. USE 3 SEGMENTS FOR 15 FEET, ETC.

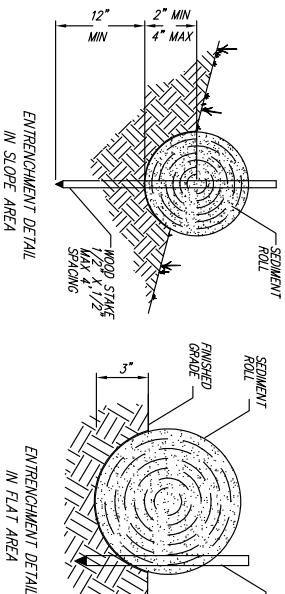
**ANCHORING:** INSTALL GRAVEL BAGS AT EACH END AND AT OVERLAPS. USE 1/2 FILL GRAVEL BAGS FOR LOW PROFILE AND BEST TRAFFIC AVAILANCE. USE CLEAN GRAVEL AT DRAIN INLETS - NOT SAND. SELECT BAGS WITH LONG TERM UV EXPOSURE AND TOUGHNESS FOR RESISTANCE TO TRAFFIC WHERE NOT POSSIBLE TO INSTALL GRAVEL BAGS DUE TO TRAFFIC PROXIMITY, IT IS ACCEPTABLE TO ANCHOR WITH CONCRETE ANCHORS OR MASONRY NAILS - ONE AT EACH END. ANCHOR CURB INLET GUARD SO THAT WATER CANNOT FLOW BEHIND IT. USE 1" WASHERS.

**IMPORTANT:** ALL INFORMATION, INCLUDING ILLUSTRATIONS, IS BELIEVED TO BE RELIABLE. USERS, HOWEVER, SHOULD INDEPENDENTLY EVALUATE THE SUITABILITY OF EACH PROJECT FOR THEIR APPLICATION. ERTIC ENVIRONMENTAL SYSTEMS MAKES NO WARRANTIES AS TO THE ACCURACY OF COMPLETENESS OF THE INFORMATION, AND DISCLAIMS ANY LIABILITY REGARDING IS USE. ERTIC ENVIRONMENTAL SYSTEMS ONLY OBLIGATIONS ARE THOSE IN THE ERTIC ENVIRONMENTAL SYSTEMS STANDARD TERMS AND CONDITIONS OF SALE FOR THIS PRODUCT, AND IN NO CASE WILL ERTIC ENVIRONMENTAL SYSTEMS BE RESPONSIBLE FOR THE SALE RESULT FOR OR UNDER THE PRODUCT. CONSULTANTS ARE SUBJECT TO MAKE CHANGES WITHOUT NOTICE. IN ADDITION, ERTIC ENVIRONMENTAL SYSTEMS RESERVES THE RIGHT TO MAKE CHANGES WITHOUT NOTIFICATION TO BUYER, TO PROCESSING OR MATERIALS THAT DO NOT AFFECT COMPLIANCE WITH ANY APPLICABLE SPECIFICATION.

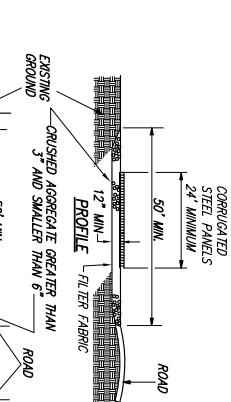
ERTIC ENVIRONMENTAL  
SYSTEMS  
1789 BULLFINCH BLVD. P. 888-624-0724  
SUITE 250 ALHAMBRA, CA 91801  
F. 610-671-5072



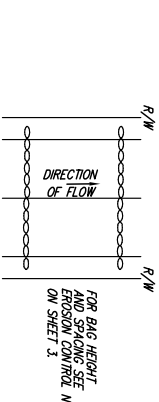
**DETAIL: ERTIC CURB INLET GUARD (PVT)**  
NOT TO SCALE



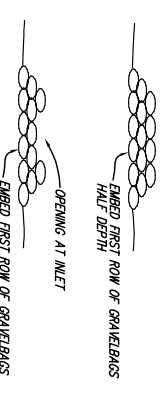
**FIBER ROLL (PVT)**  
NOT TO SCALE



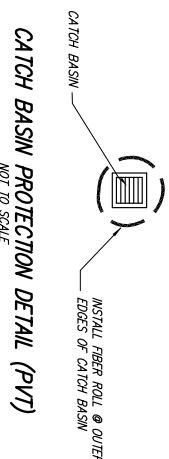
**STABILIZED CONSTRUCTION ENTRANCE (PVT)**  
NOT TO SCALE



**GRAVEL/GRAVEL BAGGING ON STREETS**



**GRAVELBAG DETAILS (PVT)**  
NOT TO SCALE



**CATCH BASIN PROTECTION DETAIL (PVT)**  
NOT TO SCALE



41743 ENTERPRISE CIRCLE NORTH, SUITE 209  
TAMECUCULA, CA 92590  
PH: (951) 587-2020  
FAX: (951) 587-2026

**BENCH MARK**

DESCRIPTION: COUNTY WORKMENT ES-151, 1.12" IRON PIN.  
LOCATION: 24' SOUTH OF WOODS VALLEY ROAD, 1.37 MILES EAST  
ALONG WOODS VALLEY ROAD FROM THE INTERSECTION OF WOODS  
VALLEY ROAD AND VALLEY CENTER ROAD  
RECORD FROM: COUNTY OF SAN DIEGO  
ELEVATION: 1,992.342 M.S.L.

**PRIVATE CONTRACT**

SHEET 4 COUNTY OF SAN DIEGO DEPARTMENT OF PUBLIC WORKS SHEETS 17

DETAILS FOR: **AUTOZONE STORE 6173**

CALIFORNIA COORDINATE INDEX 378-1755  
APPROVED FOR WILLIAM P. MORGAN, COUNTY ENGINEER, DATE: 05/20/17  
BY: BRENT C. MOORE, P.E. 59121  
DATE: 05/20/17 - LOGRMA-30144  
GRADING PERMIT NO.





\*ENGINEERED SOIL: 75% - 80% SAND, 10% MAX SILT, 5% MAX CLAY AND 0% MAX COMPOST. COMPOST SHOULD COMPOSE NO MORE THAN 0% BULK HEIGHT OF THE ENGINEERED SOIL PER THE COUNTY OF SAN DIEGO LOW IMPACT DESIGN MANUAL, APPENDIX G.  
 \*\*INSTALL 3\" depth SECTION OF WELL-AERED, SHREDDED HARDWOOD MULCH THAT HAS BEEN STORED OR STORED FOR AT LEAST 12 MONTHS.

R/W  
 1.5'  
 2:1 MAX  
 1  
 3  
 4\" THICK SECTION NO. 8 AGGREGATE - PERMEABLE CLASS 2 PERMEABLE MATERIAL  
 4\" TYPICAL GRAVEL SECTION BELOW SLOTTED DRAIN  
 EXTEND IMPERMEABLE LINER ON ALL SIDES OF BASIN A MINIMUM OF 12\" INTO THE UNDERLYING SOIL BELOW CALTRANS CLASS 2 PERMEABLE  
 PRIVATE STORM DRAIN (SIZE PER PLAN)  
 63'-5\" LONG X 16'-4\" WIDE  
 DRAIN BOX (2' X 2') PER DETAIL THIS SHEET  
 10' 1.305.00  
 10'  
 16' PER PLAN  
 18'  
 6\" SLOTTED PVC PIPE OR EQUIVALENT IMBEDDED IN FILLER BEANKEET (SEE DETAIL THIS SHEET) TO PREVENT CLOGGING SLOTTED @ 0.5% MIN TOWARDS DRAIN BOX  
 INSTALL FLOW CONTROL ORIFICE PLATE PER DETAIL THIS SHEET. (1.25\" DIAMETER UNDERDRAIN ORIFICE)  
 LAYERED ENVIRO LINER 4130 OR EQUIVALENT W/ 6\" MIN OVERLAP ALONG SIDES  
 INSTALL PER MANUFACTURER'S SPECIFICATIONS  
 EXTEND IMPERMEABLE LINER ON ALL SIDES OF BASIN A MINIMUM OF 12\" INTO UNDERLYING SOIL BELOW CALTRANS CLASS 2 PERMEABLE MATERIAL.  
 DETAIL: BIOFILTRATION BASIN (PVT) W/ NUTRIENT SENSITIVE MEDIA DESIGN  
 NOT TO SCALE

**MODEL # BC-CURB-MLS FILTER**

**FIGURE 1:**  
DETAIL OF INSTALLATION

ROUNDOFF OPENING WITH 2" FRAMING AND COVER  
FILTER HOLES SPACED AND LOCATED TO ALLOW OPENING AROUND FEET OF ANY EQUIPMENT

**FIGURE 2:**  
DETAIL OF DIMENSIONS

20" DIA. ROUNDOFF  
18" DIA. FILTER HOLES  
HANDLE FOR REMOVAL  
HANDLE HOLES

**FIGURE 3:**  
DETAIL OF PARTS

20"  
HANDLEDRAIN  
3/4" #13 STAINLESS  
EXPANDED  
HANDLE HOLES  
4 X 4 X 1/8" STAINLESS STEEL  
EXPANDED  
1/4" X 1/8" W/SH  
FINE SCREEN  
1/4" X 1/8" W/SH  
STAINLESS STEEL  
1/4" X 1/8" W/SH  
STAINLESS STEEL

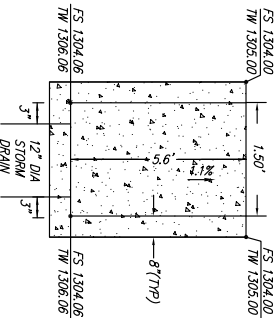
**FIGURE 4:**  
DETAIL OF WIRE

WIRE HOLES UP TO 1/4" DIA. W/OUT W/SH

**FIGURE 5:**  
FLOW PATHS - CURB FILTER

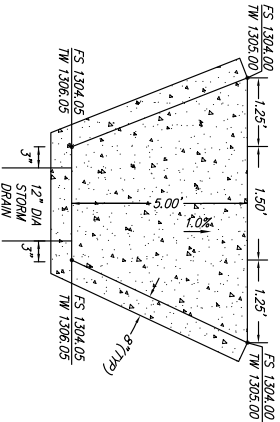
1. INLET  
2. FLOW  
3. FLOW  
4. FLOW  
5. FLOW  
6. FLOW  
7. FLOW  
8. FLOW  
9. FLOW  
10. FLOW  
11. FLOW  
12. FLOW  
13. FLOW  
14. FLOW  
15. FLOW  
16. FLOW  
17. FLOW  
18. FLOW  
19. FLOW  
20. FLOW  
21. FLOW  
22. FLOW  
23. FLOW  
24. FLOW  
25. FLOW  
26. FLOW  
27. FLOW  
28. FLOW  
29. FLOW  
30. FLOW  
31. FLOW  
32. FLOW  
33. FLOW  
34. FLOW  
35. FLOW  
36. FLOW  
37. FLOW  
38. FLOW  
39. FLOW  
40. FLOW  
41. FLOW  
42. FLOW  
43. FLOW  
44. FLOW  
45. FLOW  
46. FLOW  
47. FLOW  
48. FLOW  
49. FLOW  
50. FLOW  
51. FLOW  
52. FLOW  
53. FLOW  
54. FLOW  
55. FLOW  
56. FLOW  
57. FLOW  
58. FLOW  
59. FLOW  
60. FLOW  
61. FLOW  
62. FLOW  
63. FLOW  
64. FLOW  
65. FLOW  
66. FLOW  
67. FLOW  
68. FLOW  
69. FLOW  
70. FLOW  
71. FLOW  
72. FLOW  
73. FLOW  
74. FLOW  
75. FLOW  
76. FLOW  
77. FLOW  
78. FLOW  
79. FLOW  
80. FLOW  
81. FLOW  
82. FLOW  
83. FLOW  
84. FLOW  
85. FLOW  
86. FLOW  
87. FLOW  
88. FLOW  
89. FLOW  
90. FLOW  
91. FLOW  
92. FLOW  
93. FLOW  
94. FLOW  
95. FLOW  
96. FLOW  
97. FLOW  
98. FLOW  
99. FLOW  
100. FLOW  
101. FLOW  
102. FLOW  
103. FLOW  
104. FLOW  
105. FLOW  
106. FLOW  
107. FLOW  
108. FLOW  
109. FLOW  
110. FLOW  
111. FLOW  
112. FLOW  
113. FLOW  
114. FLOW  
115. FLOW  
116. FLOW  
117. FLOW  
118. FLOW  
119. FLOW  
120. FLOW  
121. FLOW  
122. FLOW  
123. FLOW  
124. FLOW  
125. FLOW  
126. FLOW  
127. FLOW  
128. FLOW  
129. FLOW  
130. FLOW  
131. FLOW  
132. FLOW  
133. FLOW  
134. FLOW  
135. FLOW  
136. FLOW  
137. FLOW  
138. FLOW  
139. FLOW  
140. FLOW  
141. FLOW  
142. FLOW  
143. FLOW  
144. FLOW  
145. FLOW  
146. FLOW  
147. FLOW  
148. FLOW  
149. FLOW  
150. FLOW  
151. FLOW  
152. FLOW  
153. FLOW  
154. FLOW  
155. FLOW  
156. FLOW  
157. FLOW  
158. FLOW  
159. FLOW  
160. FLOW  
161. FLOW  
162. FLOW  
163. FLOW  
164. FLOW  
165. FLOW  
166. FLOW  
167. FLOW  
168. FLOW  
169. FLOW  
170. FLOW  
171. FLOW  
172. FLOW  
173. FLOW  
174. FLOW  
175. FLOW  
176. FLOW  
177. FLOW  
178. FLOW  
179. FLOW  
180. FLOW  
181. FLOW  
182. FLOW  
183. FLOW  
184. FLOW  
185. FLOW  
186. FLOW  
187. FLOW  
188. FLOW  
189. FLOW  
190. FLOW  
191. FLOW  
192. FLOW  
193. FLOW  
194. FLOW  
195. FLOW  
196. FLOW  
197. FLOW  
198. FLOW  
199. FLOW  
200. FLOW  
201. FLOW  
202. FLOW  
203. FLOW  
204. FLOW  
205. FLOW  
206. FLOW  
207. FLOW  
208. FLOW  
209. FLOW  
210. FLOW  
211. FLOW  
212. FLOW  
213. FLOW  
214. FLOW  
215. FLOW  
216. FLOW  
217. FLOW  
218. FLOW  
219. FLOW  
220. FLOW  
221. FLOW  
222. FLOW  
223. FLOW  
224. FLOW  
225. FLOW  
226. FLOW  
227. FLOW  
228. FLOW  
229. FLOW  
230. FLOW  
231. FLOW  
232. FLOW  
233. FLOW  
234. FLOW  
235. FLOW  
236. FLOW  
237. FLOW  
238. FLOW  
239. FLOW  
240. FLOW  
241. FLOW  
242. FLOW  
243. FLOW  
244. FLOW  
245. FLOW  
246. FLOW  
247. FLOW  
248. FLOW  
249. FLOW  
250. FLOW  
251. FLOW  
252. FLOW  
253. FLOW  
254. FLOW  
255. FLOW  
256. FLOW  
257. FLOW  
258. FLOW  
259. FLOW  
260. FLOW  
261. FLOW  
262. FLOW  
263. FLOW  
264. FLOW  
265. FLOW  
266. FLOW  
267. FLOW  
268. FLOW  
269. FLOW  
270. FLOW  
271. FLOW  
272. FLOW  
273. FLOW  
274. FLOW  
275. FLOW  
276. FLOW  
277. FLOW  
278. FLOW  
279. FLOW  
280. FLOW  
281. FLOW  
282. FLOW  
283. FLOW  
284. FLOW  
285. FLOW  
286. FLOW  
287. FLOW  
288. FLOW  
289. FLOW  
290. FLOW  
291. FLOW  
292. FLOW  
293. FLOW  
294. FLOW  
295. FLOW  
296. FLOW  
297. FLOW  
298. FLOW  
299. FLOW  
300. FLOW  
301. FLOW  
302. FLOW  
303. FLOW  
304. FLOW  
305. FLOW  
306. FLOW  
307. FLOW  
308. FLOW  
309. FLOW  
310. FLOW  
311. FLOW  
312. FLOW  
313. FLOW  
314. FLOW  
315. FLOW  
316. FLOW  
317. FLOW  
318. FLOW  
319. FLOW  
320. FLOW  
321. FLOW  
322. FLOW  
323. FLOW  
324. FLOW  
325. FLOW  
326. FLOW  
327. FLOW  
328. FLOW  
329. FLOW  
330. FLOW  
331. FLOW  
332. FLOW  
333. FLOW  
334. FLOW  
335. FLOW  
336. FLOW  
337. FLOW  
338. FLOW  
339. FLOW  
340. FLOW  
341. FLOW  
342. FLOW  
343. FLOW  
344. FLOW  
345. FLOW  
346. FLOW  
347. FLOW  
348. FLOW  
349. FLOW  
350. FLOW  
351. FLOW  
352. FLOW  
353. FLOW  
354. FLOW  
355. FLOW  
356. FLOW  
357. FLOW  
358. FLOW  
359. FLOW  
360. FLOW  
361. FLOW  
362. FLOW  
363. FLOW  
364. FLOW  
365. FLOW  
366. FLOW  
367. FLOW  
368. FLOW  
369. FLOW  
370. FLOW  
371. FLOW  
372. FLOW  
373. FLOW  
374. FLOW  
375. FLOW  
376. FLOW  
377. FLOW  
378. FLOW  
379. FLOW  
380. FLOW  
381. FLOW  
382. FLOW  
383. FLOW  
384. FLOW  
385. FLOW  
386. FLOW  
387. FLOW  
388. FLOW  
389. FLOW  
390. FLOW  
391. FLOW  
392. FLOW  
393. FLOW  
394. FLOW  
395. FLOW  
396. FLOW  
397. FLOW  
398. FLOW  
399. FLOW  
400. FLOW  
401. FLOW  
402. FLOW  
403. FLOW  
404. FLOW  
405. FLOW  
406. FLOW  
407. FLOW  
408. FLOW  
409. FLOW  
410. FLOW  
411. FLOW  
412. FLOW  
413. FLOW  
414. FLOW  
415. FLOW  
416. FLOW  
417. FLOW  
418. FLOW  
419. FLOW  
420. FLOW  
421. FLOW  
422. FLOW  
423. FLOW  
424. FLOW  
425. FLOW  
426. FLOW  
427. FLOW  
428. FLOW  
429. FLOW  
430. FLOW  
431. FLOW  
432. FLOW  
433. FLOW  
434. FLOW  
435. FLOW  
436. FLOW  
437. FLOW  
438. FLOW  
439. FLOW  
440. FLOW  
441. FLOW  
442. FLOW  
443. FLOW  
444. FLOW  
445. FLOW  
446. FLOW  
447. FLOW  
448. FLOW  
449. FLOW  
450. FLOW  
451. FLOW  
452. FLOW  
453. FLOW  
454. FLOW  
455. FLOW  
456. FLOW  
457. FLOW  
458. FLOW  
459. FLOW  
460. FLOW  
461. FLOW  
462. FLOW  
463. FLOW  
464. FLOW  
465. FLOW  
466. FLOW  
467. FLOW  
468. FLOW  
469. FLOW  
470. FLOW  
471. FLOW  
472. FLOW

[illegible]



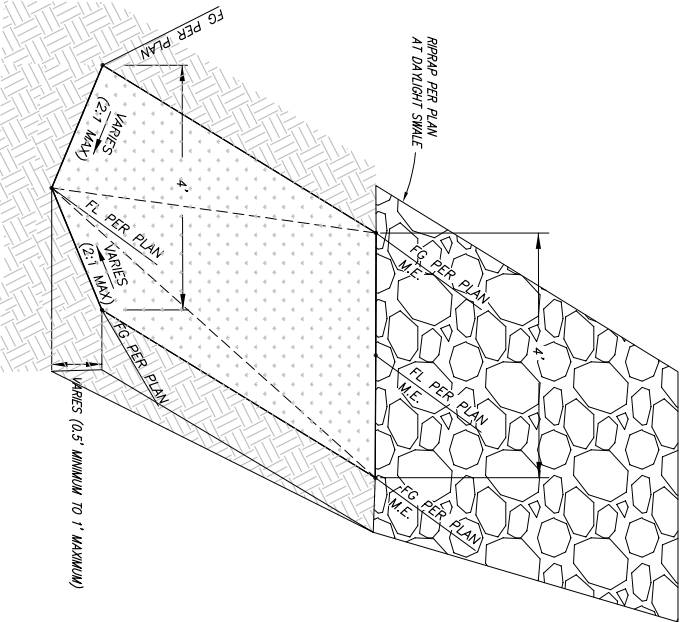
DETAIL: MODIFIED U TYPE HEADWALL PER D-34 (PVT)  
@ BIOFILTRATION BASIN

SEE SPORD D-34 FOR STEEL AND CONCRETE REQUIREMENTS AND CUTOFF WALL AT EDGE OF HEADWALL  
NOT TO SCALE



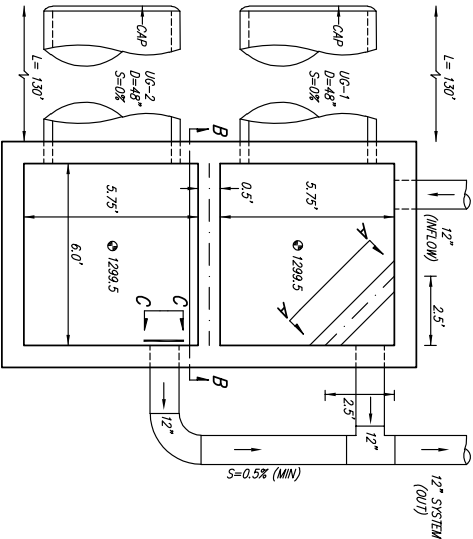
DETAIL: MODIFIED WING TYPE HEADWALL PER D-34 (PVT)  
@ BIOFILTRATION BASIN

SEE SPORD D-34 FOR STEEL AND CONCRETE REQUIREMENTS AND CUTOFF WALL AT EDGE OF HEADWALL  
NOT TO SCALE



BLADED SWALE TRANSITION TO DAYLIGHT (PVT)

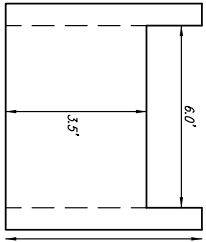
NOT TO SCALE



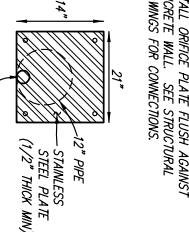
PLAN VIEW

6' X 12' JUNCTION STRUCTURE (PVT)\*

NOT TO SCALE



SECTION 'b' - 'b'

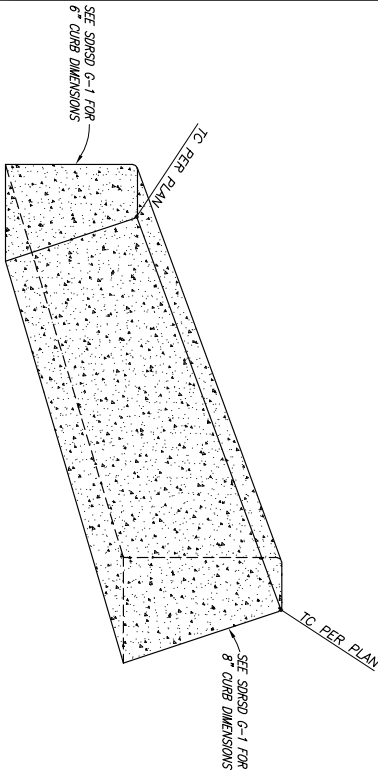


SECTION 'c' - 'c'

INSTALL ORRICE PLATE FLUSH AGAINST  
CONCRETE WALL. SEE STRUCTURAL  
DRAWINGS FOR CONNECTIONS.

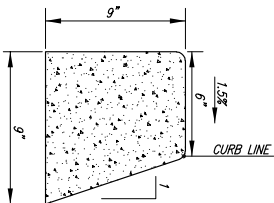
'a' - 'a' = OUTLET OF UC-1  
'b' - 'b' = OVERFLOW FROM UC-1  
TO UC-2  
'c' - 'c' = OUTLET OF UC-2

\*SEE SHEETS 14 THRU 17 FOR  
STRUCTURAL DETAILS.



CURB TRANSITION FROM 6\"/>

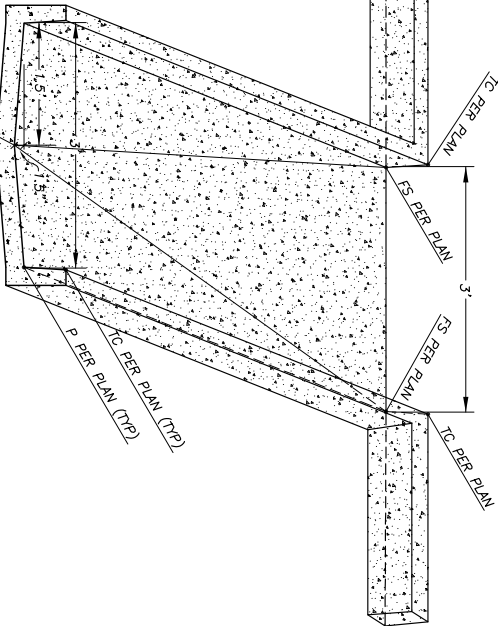
NOT TO SCALE



0\"/>

NOT TO SCALE

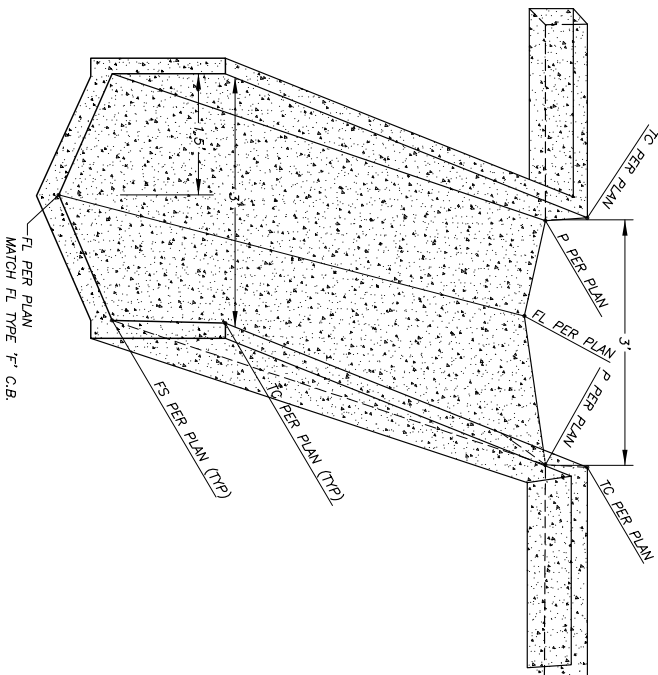
- NOTES:
1. CONCRETE SHALL BE 520-C-2500.
  2. INSTALL CRACK CONTROL JOINT AT MIDPOINT FLOWLINE TRANSITION. SEE SPORD G-10 FOR JOINT DETAILS.
  3. SLOPE TOP OF CURB 1/4\"/>
  4. CURB AND RIBBON GUTTER SHALL BE MONOLITHIC POUR.



RIBBON GUTTER FLOWLINE TRANSITION (PVT)

NOT TO SCALE

- NOTES:
1. CONCRETE SHALL BE 520-C-2500.
  2. INSTALL CRACK CONTROL JOINT AT MIDPOINT FLOWLINE TRANSITION. SEE SPORD G-10 FOR JOINT DETAILS.
  3. SLOPE TOP OF CURB 1/4\"/>
  4. CURB AND RIBBON GUTTER SHALL BE MONOLITHIC POUR.



RIBBON GUTTER FLOWLINE TRANSITION AT TYPE 'f' C.B. (PVT)

NOT TO SCALE



41743 ENTERPRISE CIRCLE NORTH, SUITE 209  
TEMECULA, CA 92590  
PH: (951) 587-2020  
FAX: (951) 587-2026

BENCH MARK

DESCRIPTION: COUNTY MONUMENT FS-151, 1.27\"/>

PRIVATE CONTRACT

SHEET 6 OF 17  
COUNTY OF SAN DIEGO  
DEPARTMENT OF PUBLIC WORKS

AUTZONE STORE 6173

CALIFORNIA COORDINATE INDEX 378-1755

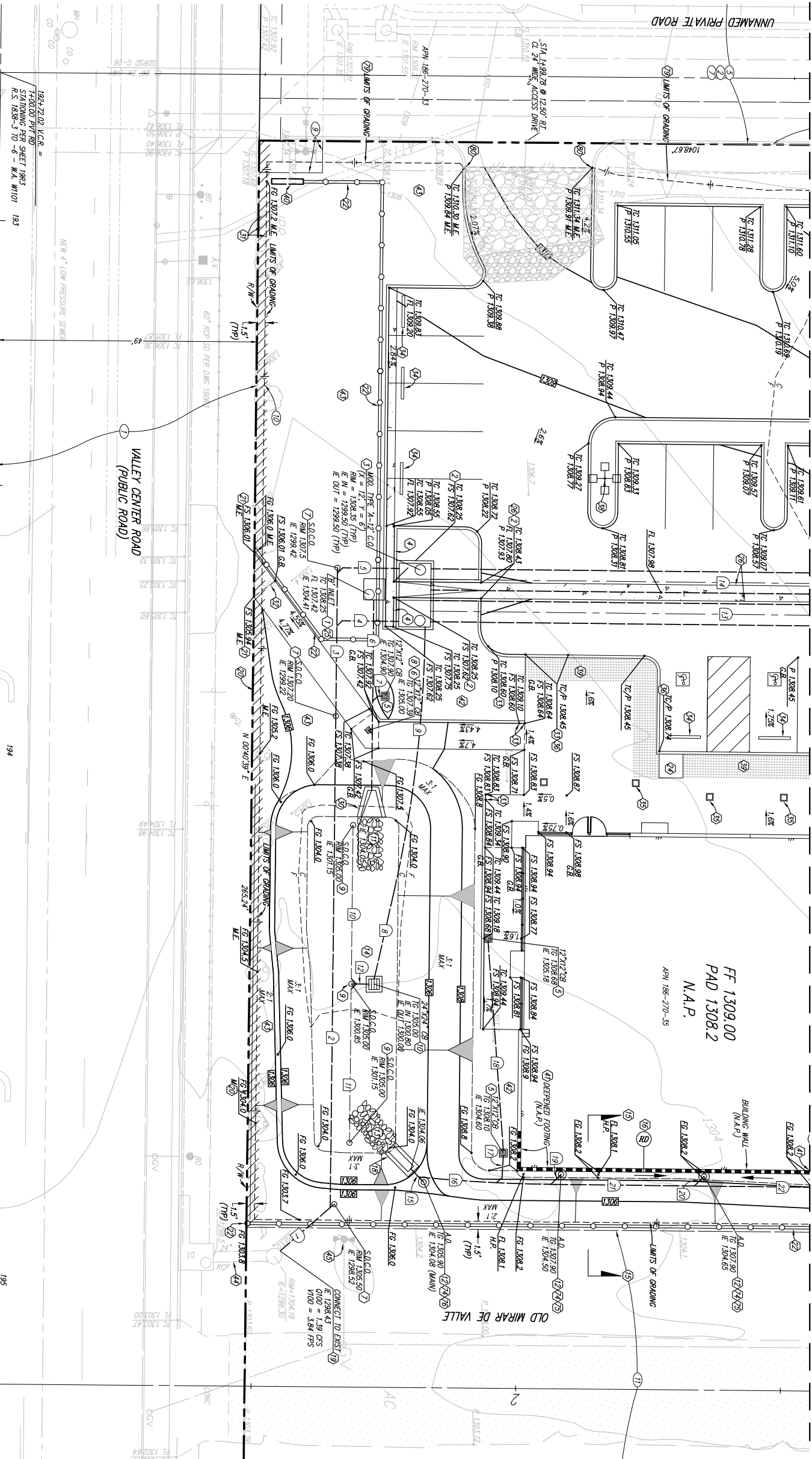
APPROVED FOR WILLIAM P. MORGAN  
COUNTY ENGINEER

DATE: \_\_\_\_\_  
BY: \_\_\_\_\_  
PDS2017-LOGRML-30144  
GRADING PERMIT NO.





MATCHLINE SEE SHEET 8



CONSTRUCTION NOTES CONT'D:

- CONSTRUCT CURB TRANSITION FROM 6" CURB FACE TO 0" CURB FACE DETAIL SHEET 6. ELEVATIONS SHOWN PER PLAN.
- INSTALL PRE-CAST CONCRETE WHEEL STOP PER DETAIL SHEET 4.
- ADJUST CONCRETE FINISHED SURFACE ELEVATIONS AT PROPOSED COLUMNS PER DETAIL SHEET 4.
- CONSTRUCT ZERO FACE CURB PER DETAIL SHEET 6. ELEVATIONS SHOWN PER PLAN.
- SITE LIGHTING PER ARCHITECTURAL PLANS (N.A.P.).
- TRUNCATED DOWNS PER ARCHITECTURAL PLANS (N.A.P.).
- MONUMENT SIGN PER ARCHITECTURAL PLANS (N.A.P.).
- CONSTRUCT DEEPENED FOOTING FOR BUILDING WALL FOOTING WITHIN LIMITS SHOWN. SEE BUILDING STRUCTURAL PLANS FOR DETAILS AND SPECIFICATIONS (PDS2017-CAUSEC-000071). SEE SECTION A-A ON SHEET 5 FOR ADDITIONAL INFORMATION. (N.A.P.).
- GRADE AREA TO DRAIN TO PROPOSED CATCH BASIN. ELEVATIONS SHOWN PER PLAN.
- GRADE AREA TO DRAIN TO VALLEY CENTER ROAD. ELEVATIONS SHOWN PER PLAN.
- EXISTING STORM DRAIN TO BE PROTECTED IN PLACE.

CONSTRUCTION NOTES CONT'D:

- EXISTING FINE HYDRAULIC TO BE PROTECTED IN PLACE.
- CONNECT TO MAIN WITH 12" X 12" X 6" W/RE CONNECTION WITH 6" PIPE EXTENSION AS NECESSARY AND AS SHOWN PER PLAN.
- GRADE AREA BETWEEN NORTH BUILDING WALL AND TOP OF SLOPE TO DRAIN TO PROPOSED LANDSCAPE AREA DRAIN. ELEVATIONS SHOWN PER PLAN.
- GRADE AREA TO DRAIN TO PROPOSED LANDSCAPE AREA DRAIN. ELEVATIONS SHOWN PER PLAN.
- PROTECT EXISTING LANDSCAPING AND IRRIGATION (I & I) IN PLACE TO THE END OF THE PROPOSED CONSTRUCTION. IF L & I ARE TO BE REMOVED, THE CONTRACTOR SHALL BE RESPONSIBLE FOR PROTECTING LANDSCAPE ARCHITECT FOR RELOCATION AND/OR DISPOSAL.
- REMOVE AND SALVAGE OR REMOVE AND DISPOSE OF OFFSITE EXISTING WOOD RAIL FENCE WITHIN LIMITS OF WORK.

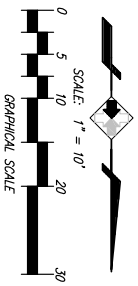
STORM DRAIN DATA (PVT)

NO.	DATA OR BRG.	RAVINE LENGTH	REMARKS	SLOPE
1	N49°09'10"E	12.52'	12" HOPE N-12 W/RE	0.75%
2	N00°39'06"E	92.84'	12" HOPE N-12 W/RE	0.75%
3	N00°39'06"E	27.00'	12" HOPE N-12 W/RE	0.75%
4	N09°22'27"W	10.68'	12" HOPE N-12 W/RE	1.40%
5	N09°22'27"W	10.68'	12" HOPE N-12 W/RE	0.75%
6	N00°37'43"E	35.97'	12" HOPE N-12 W/RE	1.00%
7	N09°22'27"W	12.00'	12" HOPE N-12 W/RE	0.75%
8	N12°48'07"E	12.00'	12" HOPE N-12 W/RE	6.00%
9	N12°48'07"E	12.00'	12" HOPE N-12 W/RE	0.75%
10	N00°38'57"E	29.00'	6" SLOTTED PVC SDR-35	1.00%
11	N00°38'57"E	29.00'	6" SLOTTED PVC SDR-35	1.00%
12	N09°22'27"W	72.00'	48" HOPE N-12 W/RE	0.00%
13	N09°22'27"W	72.00'	48" HOPE N-12 W/RE	0.00%
14	N09°22'27"W	21.44'	12" HOPE N-12 W/RE	0.50%
15	N04°29'19"W	21.44'	12" HOPE N-12 W/RE	0.50%
16	N04°29'19"W	21.44'	12" HOPE N-12 W/RE	0.50%
17	N03°19'42"E	39.65'	8" HOPE N-12 W/RE	1.46%
18	N04°10'43"W	1.68'	6" HOPE N-12 W/RE	2.38%
19	N04°29'19"W	1.68'	6" HOPE N-12 W/RE	3.27%
20	N04°29'19"W	26.20'	12" HOPE N-12 W/RE	0.50%
21	N09°21'59"W	21.00'	12" HOPE N-12 W/RE	0.50%
22	N09°21'59"W	21.00'	12" HOPE N-12 W/RE	0.50%

SEE HOPE NOTE THIS SHEET FOR INSTALLATION REQUIREMENTS

CONSTRUCTION NOTES:

- CONSTRUCT 4" TYPE 'B' INLET PER SORSO D-2. CONSTRUCT GUTTER TRANSITION ON BOTH SIDES OF INLET OPENING AS SHOWN PER PLAN. ELEVATIONS SHOWN PER PLAN.
- CONSTRUCT FLOWLINE TRANSITION WITHIN RIBBON GUTTER PER DETAIL SHEET 6. ELEVATIONS SHOWN PER PLAN.
- CONSTRUCT MODIFIED TYPE 'A'-12" CLEANOUT (N=12" V=46") PER SORSO D-9. DETAILS ON SHEET 6. AND STRUCTURAL DETAILS PER SHEETS 14 THRU 19. ELEVATIONS SHOWN PER PLAN. (0.00 N = 6.42 GFS. 1000 N = 818 FFS)
- CONSTRUCT MODIFIED TYPE 'C'-2" CURB AND GUTTER PER DETAIL SHEET 4. ELEVATIONS SHOWN PER PLAN.
- INSTALL 12"x12" DRAIN BOX PER DETAIL SHEET 4. ELEVATIONS SHOWN PER PLAN.
- INSTALL 12"x12" LOW PROFILE ADAPTOR CATCH BASIN WITHIN HANDSCAPE PER DETAIL SHEET 3. ELEVATIONS SHOWN PER PLAN.
- INSTALL STORM DRAIN CLEANOUT WITHIN LANDSCAPE AREA PER DETAIL SHEET 4. ELEVATIONS SHOWN PER PLAN.
- INSTALL 6" DIAMETER PIPE EXTENSION AS NECESSARY TO CONNECT 12"x12" LOW PROFILE ADAPTOR DRAIN BOX TO STORM DRAIN LINE NO. 6 WITH 12"x12"x6" W/RE.
- INSTALL STORM DRAIN CLEANOUT WITHIN BROTHERTON BASIN PER DETAIL SHEET 4. ELEVATIONS SHOWN PER PLAN.
- INSTALL 24"x24" DRAIN BOX PER DETAIL SHEET 5. ELEVATIONS SHOWN PER PLAN.
- INSTALL BRPBP ENERGY DISSIPATOR PER SORSO D-40. TYPE 2. 10' LONG X 5' WIDE. INSTALL NO. 3 BACKING BARRIER 0.75" THICK OVER IMPACT HIGH FILTER FABRIC OR EQUIVALENT. BRPBP WILL REPLACE PORTION OF PROPOSED MULCH AND ENGINEERED SOIL WITHIN BROTHERTON BASIN (0100= 317 GFS. V100 = 5.13 FFS)
- INSTALL LANDSCAPE AREA DRAIN PER DETAIL SHEET 5. ELEVATIONS SHOWN PER PLAN.
- INSTALL BRPBP ENERGY DISSIPATOR PER SORSO D-40. TYPE 2. 10' LONG X 5' WIDE. INSTALL NO. 3 BACKING BARRIER 0.75" THICK OVER IMPACT HIGH FILTER FABRIC OR EQUIVALENT. BRPBP WILL REPLACE PORTION OF PROPOSED MULCH AND ENGINEERED SOIL WITHIN BROTHERTON BASIN (0100= 317 GFS. V100 = 5.13 FFS)
- CONSTRUCT BROTHERTON BASIN PER DETAILS ON SHEET 5. ELEVATIONS SHOWN PER PLAN.
- SEE DETAIL 'A' - 1/4" PER SHEET 5 FOR TYPICAL SECTION AT BACK OF BUILDING.
- HARD CONNECT ROOF DRAINS TO PROPOSED 12" STORM DRAIN WITH W/RE CONNECTION. LOCATIONS TO BE DETERMINED IN THE FIELD AND SHOWN ON THE RECORD DRAWMINGS.
- CONSTRUCT U-TYPE HEADWALL PER SORSO D-34 AND DETAIL SHEET 6.
- CONNECT STORM DRAIN TO EXISTING ROP RISER WITH WATER TIGHT CONNECTION. ELEVATIONS SHOWN PER PLAN.
- EXISTING WOOD RAIL FENCE AND O.G. TRAIL TO BE PROTECTED IN PLACE. IF WOOD RAIL FENCE AND/OR O.G. TRAIL GET DAMAGED OR DESTROYED DURING CONSTRUCTION THEN CONTRACTOR SHALL REPLACE IN KIND TO THE SATISFACTION OF THE COUNTY ENGINEER.
- SANUIT, REMOVE AND PROPERLY DISPOSE OF OFFSITE PORTION OF EXISTING WOOD RAIL FENCE TO PROVIDE PEDESTRIAN ACCESS TO SITE. CONTRACTOR SHALL RECONSTRUCT PORTION OF EXISTING WOOD RAIL FENCE AS NECESSARY TO THE SATISFACTION OF THE COUNTY ENGINEER.
- INSTALL WOOD RAIL FENCE PER ARCHITECTURAL PLANS (N.A.P.)
- PROPOSED TREE PLANTER INSTALLED PER LANDSCAPE AND IRRIGATION PLANS (N.A.P.)
- INSTALL 80" CLEAN CURB INLET FILTER FOR PRE-TREATMENT AT CURB INLET OPENING PER DETAIL SHEET 5.
- CONSTRUCT RIBBON GUTTER PER DETAIL SHEET 4. ELEVATIONS SHOWN PER PLAN.
- CONSTRUCT WING-TYPE HEADWALL PER SORSO D-34 AND DETAIL SHEET 6.
- EXISTING IRRIGATION VALVES TO BE PROTECTED IN PLACE. ADJUST RIMS TO FINISHED GRADE.
- EXISTING SOW TO BE RELOCATED IN THE FIELD TO THE SATISFACTION OF THE COUNTY ENGINEER. FINAL LOCATION TO BE DETERMINED IN THE FIELD AND SHOWN ON THE RECORD DRAWMINGS.



HIDE NOTE:

INSTALL HIDE STORM DRAIN PER CITY OF SAN DIEGO STANDARD DRAINING SDD-110 WITH FILTER FABRIC AROUND PIPE ZONE PER COUNTY OF SAN DIEGO HYDRAULIC DESIGN MANUAL (APPENDIX B.5.2).



41743 ENTERPRISE CIRCLE NORTH, SUITE 209  
TAMECULA, CA 92290  
PH: (951) 587-2020  
FAX: (951) 587-2026

BENCH MARK

DESCRIPTION: COUNTY MONUMENT FS-151, 1.12" IRON PIN  
LOCATION: 24' SOUTH OF WOODS VALLEY ROAD, 1.27 MILES EAST  
ALONG WOODS VALLEY ROAD FROM THE INTERSECTION OF WOODS  
VALLEY ROAD AND VALLEY CENTER ROAD  
RECORD FROM: COUNTY OF SAN DIEGO  
ELEVATION: 1292.342  
DATUM: M.S.L.

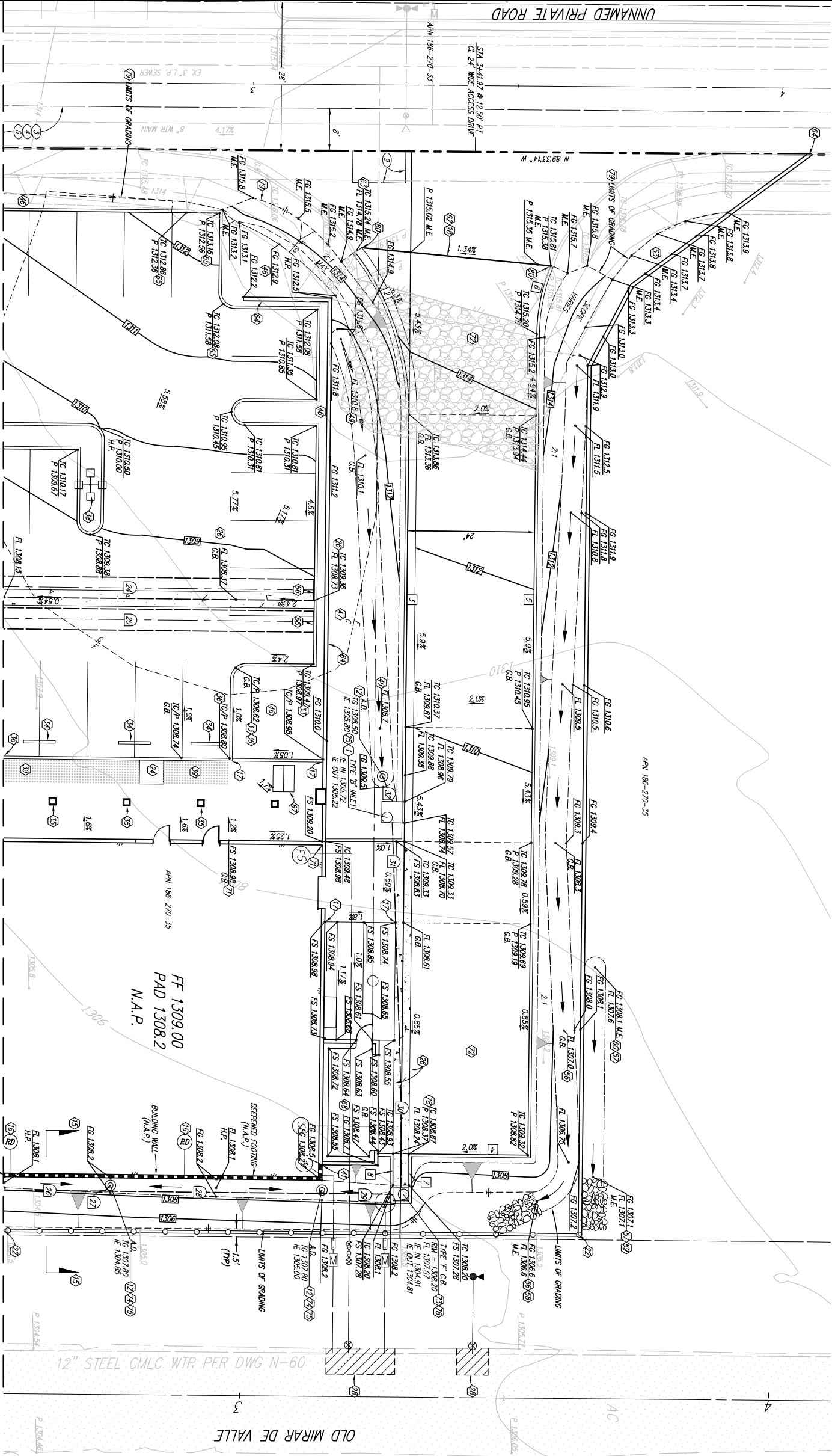
PRIVATE CONTRACT

SHEET 7  
COUNTY OF SAN DIEGO  
DEPARTMENT OF PUBLIC WORKS  
PRECISE GRADING PLANS FOR:  
**AUTOZONE STORE 6173**

CALIFORNIA COORDINATE INDEX 378-1755  
APPROVED FOR WILLIAM P. MORGAN  
COUNTY ENGINEER  
DATE: \_\_\_\_\_  
BY: \_\_\_\_\_  
RECORD FROM: \_\_\_\_\_  
PDS2017-LOGRMU-30144  
GRADING PERMIT NO. \_\_\_\_\_







CONSTRUCTION NOTES CONT'D:

- 22 SEE SHEET 2 FOR TYPICAL SECTION OF PRIVATE 24' WIDE ACCESS DRIVE.
- 23 CONSTRUCT TYPE 'T' CATCH BASIN PER SPDS D-7 WITH OPENING ON THE SOUTH SIDE. ELEVATIONS SHOWN PER PLAN.
- 24 CONNECT TO MAIN WITH 12" X 12" X 6" W/E CONNECTION WITH 6" PIPE EXTENSION AS NECESSARY AND AS SHOWN PER PLAN.
- 25 GRADE AREA TO DRAIN BETWEEN NORTH BUILDING WALL AND TOP OF SLOPE TO DRAIN TO PROPOSED LANDSCAPE AREA DRAIN. ELEVATIONS SHOWN PER PLAN.
- 26 CONSTRUCT FLOWLINE TRANSITION WITHIN IN RIBBON GUTTER TO TYPE 'T' CATCH BASIN PER DETAIL SHEET 6.
- 27 PROTECT EXISTING LANDSCAPING AND IRRIGATION (I & I) IN PLACE TO THE MAXIMUM EXTENT PRACTICABLE. IF L & I CANNOT BE SAVED IN PLACE, COORDINATE WITH PROJECT LANDSCAPE ARCHITECT FOR RELOCATION AND/OR DISPOSAL.
- 28 REMOVE AND SALVAGE OR REMOVE DISPOSE OF OFFSITE EXISTING WOOD RAIL FENCE WITHIN LIMITS OF WORK.

CURB DATA (PVT)			
NO.	DELTA OR BRG.	RADIUS	REMARKS
1	NOT USED		
2	387.737'	49.14'	6" TYPE 'G' CURB & GUTTER
3	N0037.537'E	80.74'	6" TYPE 'G' CURB & GUTTER
4	N8922.227'W	22.50'	6" TYPE 'G' CURB
5	N0037.537'E	155.12'	6" TYPE 'G' CURB
6	274.341'	35'	6" TYPE 'G' CURB
7	N0037.222'W		5.94' VARIOUS HEIGHT TYPE 'G' CURB
8	N0037.222'W	5.94'	VARIED HEIGHT TYPE 'G' CURB

STORM DRAIN DATA (PVT)			
NO.	DELTA OR BRG.	RADIUS	REMARKS
1	N8922.227'W	58.00'	48" HOPE N-12 W/ 0.00%
2	N8922.227'W	58.00'	48" HOPE N-12 W/ 0.00%
3	N8922.227'W	19.24'	12" HOPE N-12 W/ 0.50%
4	N8922.227'W	0.54'	6" HOPE N-12 W/ 0.00%
5	N8922.227'W	49.46'	12" HOPE N-12 W/ 0.50%
6	N8922.227'W	14.07'	12" HOPE N-12 W/ 0.50%
7	N035.105'W	28.78'	12" HOPE N-12 W/ 0.50%
8	N035.105'W	40.22'	12" HOPE N-12 W/ 0.50%
9	N035.105'W	5.12'	6" PVC SDR-35 1.50%

\* SEE HOPE NOTE THIS SHEET FOR INSTALLATION REQUIREMENTS

MATCHLINE SEE SHEET 7

HOPE NOTE:

INSTALL HOPE STORM DRAIN PER CITY OF SAN DIEGO STANDARD DRAINING SDD-110 WITH FILTER FABRIC AROUND PIPE ZONE PER COUNTY OF SAN DIEGO HYDRAULIC DESIGN MANUAL (APPENDIX B.5.2).

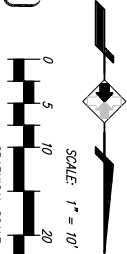
SEE SHEET 3 FOR EASEMENT IDENTIFICATION NOTES

SEE SHEET 10 FOR WATER AND SEWER FACILITIES

ALL EXISTING IMPROVEMENTS, LANDSCAPING & IRRIGATION WITHIN THE LIMITS OF WORK TO BE REMOVED AND PROPERLY DISPOSED OF OFFSITE UNLESS NOTED OTHERWISE. SEE LANDSCAPING AND IRRIGATION PLANS FOR ADDITIONAL INFORMATION.

CONTRACTOR SHALL ADJUST ALL EXISTING AND PROPOSED UTILITY LINES TO FINISHED GRADE EXCEPT WITHIN THE PROPOSED BOTTLENECK BASINS OR UNLESS SHOWN OTHERWISE.

CAUTION: THE LOCATION OF THE EXISTING UTILITIES ON THESE PLANS ARE APPROXIMATE AND SHALL BE VERIFIED BY THE CONTRACTOR PRIOR TO CONSTRUCTION.



COUNTY APPROVED CHANGES

NO. DESCRIPTION: APPROVED BY: DATE:

RECORD PLAN

BY: NAME DATE:

R.C.E. EXPIRES:



41743 ENTERPRISE CIRCLE NORTH, SUITE 209  
TAMECILIA, CA 92590  
PH: (951) 587-2020  
FAX: (951) 587-2026

BENCH MARK

DESCRIPTION: COUNTY MONUMENT FS-151, 1.12" IRON PIN  
LOCATION: 24' SOUTH OF WOODS VALLEY ROAD, 1.32' WEST EAST  
ALONG WOODS VALLEY ROAD FROM THE INTERSECTION OF WOODS  
VALLEY ROAD AND VALLEY CENTER ROAD  
RECORD FROM: COUNTY OF SAN DIEGO  
ELEVATION: 1392.342 DATUM: M.S.L.

PRIVATE CONTRACT

SHEET 8 DEPARTMENT OF PUBLIC WORKS SHEETS 17  
PRECISE GRADING PLANS FOR:  
AUTOZONE STORE 6173

CALIFORNIA COORDINATE INDEX 378-1755  
APPROVED FOR WILLIAM P. MORGAN, COUNTY ENGINEER  
DATE: 05/20/2017  
BY: DATE: 05/20/2017  
LOGRAN-30144  
GRADING PERMIT NO.

CONSTRUCTION NOTES:

- 1 CONSTRUCT 4" TYPE 'B' INLET PER SPDS D-2. CONSTRUCT GUTTER TRANSITION ON BOTH SIDES OF CURB INLET OPENING AS SHOWN PER PLAN. ELEVATIONS SHOWN PER PLAN.
- 2 INSTALL LANDSCAPE AREA DRAIN PER DETAIL SHEET 5. ELEVATIONS SHOWN PER PLAN. SEE DETAIL 'A' - 'A' PER SHEET 5 FOR TYPICAL SECTION AT BACK OF BUILDING.
- 3 HARD CONNECT ROOF DRAINS TO PROPOSED 12" STORM DRAIN WITH W/E CONNECTION. LOCATIONS TO BE DETERMINED IN THE FIELD AND SHOWN ON THE RECORD DRAWMINGS.
- 4 ZERO FACE CONCRETE KNOB CURB INSTALLED PER LANDSCAPE AND IRRIGATION PLANS (N.A.P.)
- 5 INSTALL WOOD RAIL FENCE PER ARCHITECTURAL PLANS (N.A.P.)
- 6 PROPOSED TREE PLANTER INSTALLED PER LANDSCAPE AND IRRIGATION PLANS (N.A.P.)
- 7 INSTALL BIO CLEAN CURB INLET FILTER FOR PRE-TREATMENT AT CURB INLET OPENING PER DETAIL SHEET 5.
- 8 CONSTRUCT RIBBON GUTTER PER DETAIL SHEET 4. ELEVATIONS SHOWN PER PLAN.
- 9 SAWCUT LINE.
- 10 CONSTRUCT CURB TRANSITION FROM 6" CURB FACE TO 0" CURB FACE PER SPDS G-1. ELEVATIONS SHOWN PER PLAN.
- 11 ADJUST CONCRETE FINISHED SURFACE ELEVATIONS AT PROPOSED COLUMNS PER DETAIL SHEET 4.
- 12 INSTALL PRE-CAST CONCRETE WHEEL STOP PER DETAIL SHEET 4.
- 13 CONSTRUCT ZERO FACE CURB PER DETAIL SHEET 6. ELEVATIONS SHOWN PER PLAN.
- 14 SITE LIGHTING PER ARCHITECTURAL PLANS (N.A.P.)
- 15 TRUNCATED DOWNS PER ARCHITECTURAL PLANS (N.A.P.)
- 16 CONSTRUCT DEFERRED FOOTING FOR BUILDING WALL FOOTING WITHIN LIMITS SHOWN. SEE BUILDING STRUCTURAL PLANS FOR DETAILS AND SPECIFICATIONS (PDS2017-CMSRC-00007). SEE SECTION A-A ON SHEET 3 FOR ADDITIONAL INFORMATION. (N.A.P.)
- 17 GRADE AREA TO DRAIN TO PARKING LOT. ELEVATIONS SHOWN PER PLAN.
- 18 GRADE AREA TO DRAIN TO BLADED SWALE/LANDSCAPE AREA DRAIN. ELEVATIONS SHOWN PER PLAN.
- 19 INSTALL BLADED SWALE PER DETAIL SHEET 4. ELEVATIONS SHOWN PER PLAN.
- 20 GRADE AREA TO DRAIN TO BLADED SWALE. ELEVATIONS SHOWN PER PLAN.
- 21 TRANSITION BLADED SWALE FROM 1.0' DEEP (4" WIDE) TO DAYLIGHT AT PROPOSED RRP PER DETAIL SHEET 6. ELEVATIONS SHOWN PER PLAN.
- 22 TRANSITION BLADED SWALE FROM 0.5' DEEP (4" WIDE) TO DAYLIGHT AT PROPOSED RRP PER DETAIL SHEET 6. ELEVATIONS SHOWN PER PLAN.
- 23 INSTALL RIRAP ENERGY DISSIPATOR PER SPDS D-40, TYPE 2, 10' LONG X 5' WIDE. INSTALL NO. 3 BAKING BRPAP, 0.75" THICK OVER MIGHT 140N FILTER FABRIC OR EQUIVALENT. (0100 = 0.10 CFS, V100 = 0.80 FPS)
- 24 INSTALL RIRAP ENERGY DISSIPATOR PER SPDS D-40, TYPE 2, 10' LONG X 5' WIDE. INSTALL NO. 3 BAKING BRPAP, 0.75" THICK OVER MIGHT 140N FILTER FABRIC OR EQUIVALENT. (0100 = 2.32 CFS, V100 = 1.94 FPS)
- 25 INSTALL BLADED SWALE (0.5' DEEP X 4' WIDE) AT WEST SIDE OF SITE WALL. START LOCATION TO BE DETERMINED IN THE FIELD TO FACILITATE DRAINING STORM WATER TO OLD MIGHT 140 W/ALL.
- 26 SAWCUT, REMOVE AND PROPERLY DISPOSE OF OFFSITE PORTION OF EXISTING ASPHALT PAVEMENT AND BASE AS NECESSARY TO INSTALL PRIVATE ACCESS DRIVE FOR DELIVERIES AND TRASH COLLECTION FROM THE EXISTING UNNAMED PRIVATE ROAD. SEE HORIZONTAL CONTROL PLAN FOR PAVEMENT STRUCTURAL SECTION. ELEVATIONS SHOWN PER PLAN.
- 27 BEGIN 6" TYPE 'G-2' CURB AND GUTTER PER SPDS G-2. TRANSITION GUTTER SLOPE TO MATCH EXISTING GUTTER SLOPE AT MATCH POINT.
- 28 CONSTRUCT SITE WALL PER ARCHITECTURAL PLANS (N.A.P.)
- 29 CONSTRUCT CURB TRANSITION FROM 6" CURB TO 8" CURB PER SPDS G-1. ELEVATIONS SHOWN PER PLAN.
- 30 INSTALL 48" DIAMETER END CAP ON PIPE WITH WATER TIGHT CONNECTION, BACKFILL OF PIPES, ESPECIALLY AT END CAP, SHALL BE COMPACTED TO 95% RELATIVE COMPACTION UNLESS OTHERWISE DIRECTED BY GEOTECHNICAL ENGINEER OF RECORD.
- 31 INSTALL BME BACK PER ARCHITECTURAL PLANS (N.A.P.)
- 32 CONSTRUCT TRASH ENCLOSURE PER ARCHITECTURAL PLANS. ELEVATIONS SHOWN PER PLAN. (N.A.P.)
- 33 CONSTRUCT STEM WALL FOR BUILDING WALL. SEE BUILDING STRUCTURAL PLANS FOR DETAILS AND SPECIFICATIONS (PDS2017-CMSRC-00007). (N.A.P.)

