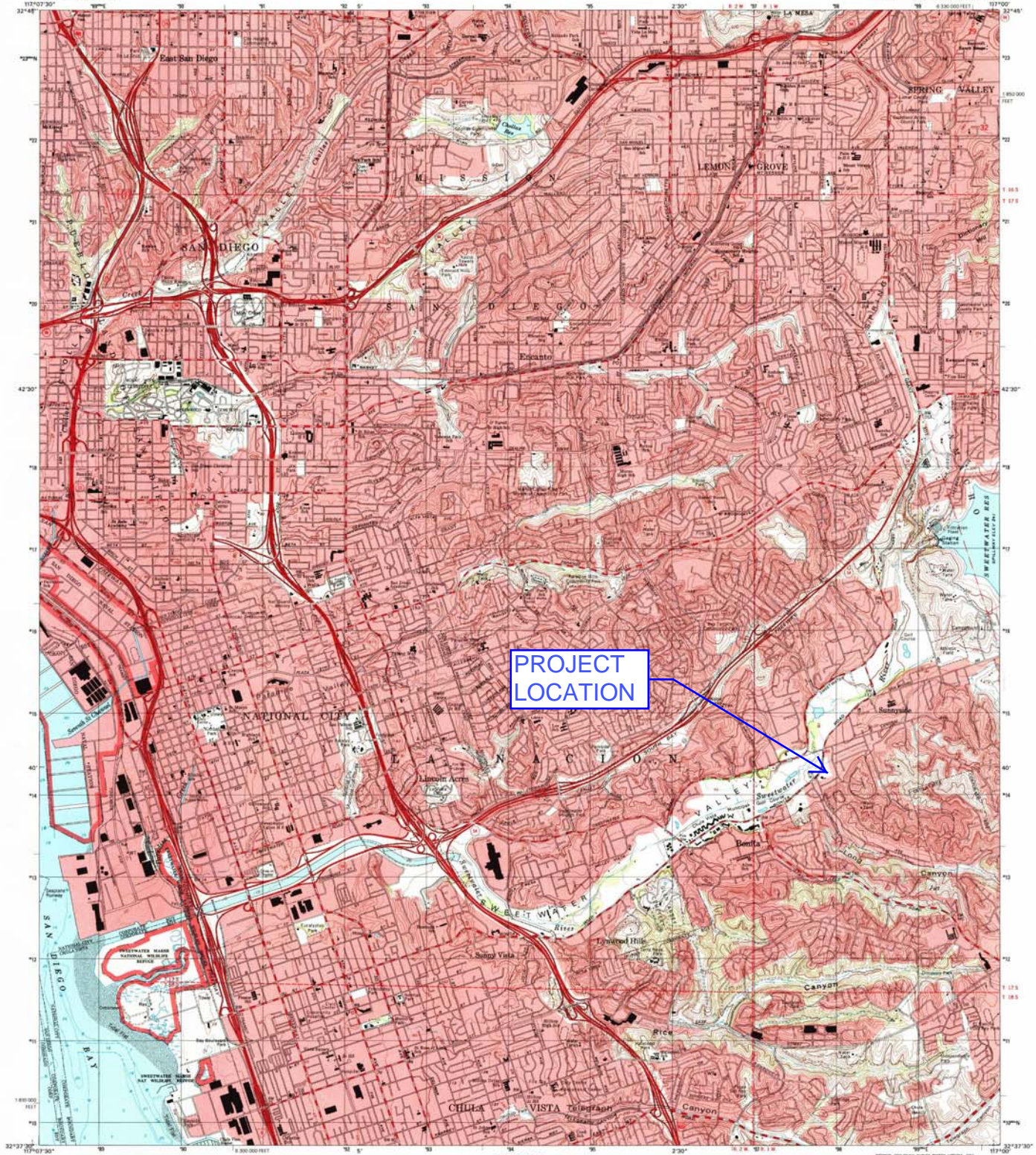




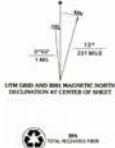
U.S. DEPARTMENT OF THE INTERIOR
U.S. GEOLOGICAL SURVEY

NATIONAL CITY QUADRANGLE
CALIFORNIA-SAN DIEGO CO.
7.5-MINUTE SERIES (TOPOGRAPHIC)



PROJECT LOCATION

Produced by the United States Geological Survey
Topographic map series. Public Land Survey System and
minor control control as of 1962. Revision control as of 2000
North American Datum of 1983 (NAD 83). Projection
1:250,000 scale. Universal Transverse Mercator, zone 11
18 1900 meter offset. Contour interval 20 feet.
Data 66
North American Datum of 1983 (NAD 83) is shown by dashed
contour lines. The values of the shift between NAD 83 and NAD 27
for 1:250,000 projection are available from National Geographic
Survey NADCON software
Aerial photography data compiled from USGS/CASI 1987 (1987)
This information is not intended for navigational purposes.
There may be changes in the boundaries of the
National or State maintenance shown on this map.
Names of nearby, schools, and other labeled buildings omitted 1987



SCALE 1:24 000
CONTOUR INTERVAL 20 FEET
SUPPLEMENTARY CONTOUR INTERVAL 10 FEET
NATIONAL GEODETIC VERTICAL DATUM OF 1988
TO CORRECT FROM FEET TO METERS, MULTIPLY BY 0.3048
DEPTH CURVES AND ROCKS IN FEET DATED TO MEAN LOW WATER
SHOULDER SHOWN REPRESENTS THE APPROXIMATE LINE OF MEAN HIGH WATER
THE SHADING RANGE OF THIS IS APPROXIMATELY 1:250,000
THIS MAP COMPLES WITH NATIONAL MAP ACCURACY STANDARDS
FOR SALE BY U.S. GEOLOGICAL SURVEY, P.O. BOX 37828, DENVER, COLORADO 80237
A FOLDER DESCRIBING TOPOGRAPHIC MAPS AND SYMBOLS IS AVAILABLE ON REQUEST

RECEIVED
NOV 3 0 2001
HISTORICAL MAP ARCHIVES



ROAD CLASSIFICATION

Primary Highway	Light-duty road, hard or
hard surface	improved surface
Secondary Highway	Unimproved road
hard surface	
Interstate Route	U.S. Route
	State Route

QUADRANGLE LOCATION

1	2	3	4	5	6	7	8	9	10	11	12
11a	12a	13a	14a	15a	16a	17a	18a	19a	20a	21a	22a
11b	12b	13b	14b	15b	16b	17b	18b	19b	20b	21b	22b
11c	12c	13c	14c	15c	16c	17c	18c	19c	20c	21c	22c
11d	12d	13d	14d	15d	16d	17d	18d	19d	20d	21d	22d

NATIONAL CITY, CA
1996
NIMA 2349 D 10E-SERIES 1996

SDC PDS RCVD 08-17-18
MUP16-010