

From: Donna Tisdale
To: [Harris, Susan](#); [Koutoufidis, Nicholas](#)
Cc: [Jacob, Dianne](#); [Wilson, Adam](#)
Subject: Boulder Brush DEIR-noise report
Date: Sunday, January 12, 2020 11:48:00 AM
Attachments: [DBF Ambient sound measurements Blvd 7-31-19.pdf](#)

RE: Boulder Brush / Campo Wind DEIR, PDS2019-ER-19-16-001, PDS2019-MUP-19-002

Hello Susan and Nicholas,

Please include the following comments and attached professional ambient sound measurement report into the Boulder Brush DEIR record, that were previously submitted to the BIA and former PDS project manager, Bronwyn Brown, for Campo Wind / Boulder Brush DEIS on August 6, 2019.

O3-1

Appendix A of the County's DEIR does not include this information that invalidated Dudek's initial ambient sound measurements because the equipment they used could not record as low as our ambient rural levels. Dudek's negligence / incompetence was not clearly disclosed in the County's Boulder Brush DEIR.

O3-2

Please confirm receipt of this email and that this information will be included into the formal DEIR record. It is a shame when the public has to pay to do the job that so-called professionals like Dudek get paid the big bucks to do. It galls us that their often sloppy work is rarely challenged by the powers that be.

O3-3

Regards
Donna Tisdale, President
Backcountry Against Dumps
619-766-4170

----- Forwarded message -----

From: **Donna Tisdale** <tisdale.donna@gmail.com>
Date: Tue, Aug 6, 2019 at 8:55 AM
Subject: Campo Wind - new ambient sound report
To: Hall, Harold <harold.hall@bia.gov>, <amy.dutschke@bia.gov>
Cc: <STEPHANIE.ALLEN@mail.house.gov>, Harrison, Michael <Michael.Harrison@mail.house.gov>, Brown, Bronwyn <Bronwyn.Brown@sdcountry.ca.gov>, Jacob, Dianne <dianne.jacob@sdcountry.ca.gov>, Wilson, Adam <adam.wilson@sdcountry.ca.gov>

SIGNIFICANT NEW AMBIENT SOUND MEASUREMENT INFORMATION FOR CAMPO WIND DEIS TO SUPPORT REQUESTS FOR A REVISED AND RECIRCULATED DEIS.

Hello Harold (Dan),

Based on concerns generated by the suspiciously high rural ambient sound measurements Dudek published in the Campo Wind DEIS, our non-profit hired a third party acoustic expert

O3-4

to conduct independent long-term sound measurements.

The new measurements validate our concerns that were previously documented in Campo Wind DEIS comments submitted by our non-profit, dBF Associates, Inc, Wilson Ihrig Associates and the Law Offices of Stephan C. Volker. The new measurements also bolster concerns raised by experts that Dudek had used improper equipment that could not record ambient sound levels as low as those in our quiet rural area.

Please find the new ambient sound measurement report from dBF Associates, Inc, (dated 7-31-19) based on 72-hour tests conducted at 6 sites located in close proximity to ambient sound measurement locations used by Dudek in the Campo Wind DEIS. dBF's measurement details and locations are listed in the table on page 3.

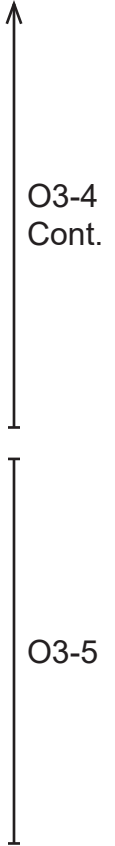
The dBF Associates report concludes as follows:

- At five locations, the measured Ldn ambient sound levels were 6-23 dBA lower than those presented in the Dudek report. At four locations, the measured average L90 sound levels were 9-14 dBA lower than those presented in the Dudek report.

Dudek must be required to conduct new ambient sound levels for a revised and recirculated DEIS, using the proper equipment, to ensure that their questionable higher measurements published in the discredited DEIS do not provide an unfair advantage to Terra-Gen's Campo Wind project, while placing both tribal and private residents / Noise Sensitive Land Uses (NSLU) at a significant disadvantage through reliance on those inaccurate results.

Please confirm receipt of this message and report.

Regards,
Donna Tisdale, President
Backcountry Against Dumps
PO Box 1275
Boulevard, CA 91905
619-766-4170





3129 Tiger Run Court, Suite 202
Carlsbad, CA 92010
619-609-0712

July 31, 2019

Backcountry Against Dumps, Inc.
% Donna Tisdale
P.O. Box 1275
Boulevard, CA 91905

Re: Long-Term Ambient Sound Level Measurements
Boulevard, Campo, & Pine Valley, California

Ms. Tisdale:

At your request, dBF Associates, Inc. conducted long-term ambient sound level measurements at several locations in the Boulevard / Campo / Pine Valley area of unincorporated San Diego County, California.

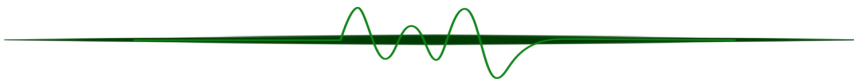
The following presents the measurement results.

Noise Background

Sound is a physical phenomenon consisting of minute vibrations that travel through a medium, such as air, and are sensed by the human ear. Sound is generally characterized by several variables, including frequency and intensity. Frequency describes the sound's pitch and is measured in cycles per second, or hertz (Hz), whereas intensity describes the sound's loudness and is measured in decibels (dB). Decibels are measured using a logarithmic scale. A sound level of 0 dB is approximately the threshold of human hearing. Normal speech has a sound level of approximately 60 dB. Sound levels above about 120 dB begin to be felt inside the human ear as discomfort and eventually as pain at still higher levels. The minimum change in the sound level of individual events that an average human ear can detect is about 3 dB. The average person perceives a change in sound level of about 10 dB as a doubling (or halving) of the sound's loudness; this relation holds true for sounds of any loudness.

Because of the logarithmic nature of the decibel unit, sound levels cannot be added or subtracted directly and are somewhat cumbersome to handle mathematically. A simple rule is useful, however, in dealing with sound levels. If a sound's intensity is doubled, the sound level increases by 3 dB, regardless of the initial sound level. Thus, for example, 60 dB + 60 dB = 63 dB, and 80 dB + 80 dB = 83 dB.

O3-6



The normal human ear can detect sounds that range in frequency from about 20 Hz to 20,000 Hz. However, all sounds in this wide range of frequencies are not heard equally well by the human ear, which is most sensitive to frequencies in the range of 1,000 Hz to 4,000 Hz. This frequency dependence can be taken into account by applying a correction to each frequency range to approximate the human ear's sensitivity within each range. This is called A-weighting and is commonly used in measurements of community environmental noise. The A-weighted sound pressure level (abbreviated as dBA) is the sound level with the "A-weighting" frequency correction. In practice, the level of a noise source is conveniently measured using a sound level meter that includes a filter corresponding to the dBA curve.

Because community noise fluctuates over time, a single measure called the Equivalent Sound Level (Leq) is often used to describe the time-varying character of community noise. The Leq is the energy-averaged A-weighted sound level during a measured time interval, and is equal to the level of a continuous steady sound containing the same total acoustical energy over the averaging time period as the actual time-varying sound. Additionally, it is often desirable to know the acoustic range of the noise source being measured. This is accomplished through the Lmax and Lmin indicators, which represent the root-mean-square maximum and minimum noise levels obtained during the measurement interval. The Lmin value obtained for a particular monitoring location is often called the "acoustic floor" for that location.

To describe the time-varying character of environmental noise, the statistical noise descriptors L10, L50, and L90 are commonly used. They are the noise levels equaled or exceeded during 10, 50, and 90 percent of a stated time, respectively. Sound levels associated with L10 typically describe transient or short-term events, whereas levels associated with L90 describe the steady-state (or most prevalent) noise conditions.

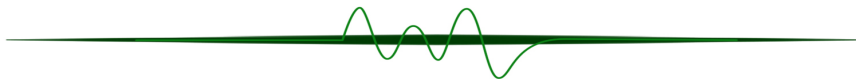
A metric known as the Day-Night Average Sound Level (Ldn) is an adjusted average A-weighted sound level for a 24-hour day. It is calculated by adding a 10-dB adjustment to sound levels during nighttime hours (10:00 p.m. to 7:00 a.m.). This adjustment compensates for the increased sensitivity to noise during the typically quieter nighttime hours.

Ambient Sound Level Measurements

The ambient sound level environment was quantified based on long-term (72 or more consecutive hours) sound level measurements at six locations between July 16-19 and July 19-23, 2019. The locations are shown on Figure 2. The weather conditions ranged from 55-102°F, 12-82% relative humidity, and 0-16 mph wind speeds [Weather Underground 2019].

O3-6
Cont.

O3-7



The measurements were conducted using Larson-Davis Model 812 or 820 American National Standards Institute (ANSI) Type 1 Sound Level Meters (SLMs). Each SLM was field-calibrated before and after the measurements with a Brüel & Kjær 4230 or Larson-Davis CAL 200 acoustic calibrator. The microphone of each SLM was placed approximately five feet above ground level and fitted with a 7-inch windscreen. Measurement positions were selected to minimize sound from human activities and wind through vegetation. All measurements were conducted at least 10 feet from vertical reflecting surfaces.

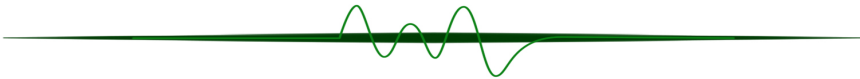
The locations and results of the measurements are presented in Table 1 below. The measurements are compared to the nearest sound levels reported in the Draft Acoustical Analysis Report for the Campo Wind Project with Boulder Brush Facilities [Dudek 2019].

Table 1. Ambient Sound Level Measurements

Location / Date	dBFA	Dudek		Difference (dBFA - Dudek)
Tisdale Residence 32.620430, -116.350197 7/16/2019 – 7/19/2019	39 dBA Ldn	LT1	51 dBA Ldn	- 12 dBA
	26 dBA average L90		35 dBA average L90	- 11 dBA
Morrison Residence 32.709839, -116.295612 7/16/2019 – 7/19/2019	45 dBA Ldn	LT10	56 dBA Ldn	- 11 dBA
	34 dBA average L90		48 dBA average L90	- 14 dBA
DeGroot Residence 32.689269, -116.324503 7/16/2019 – 7/19/2019	44 dBA Ldn	LT7	67 dBA Ldn	- 23 dBA
	36 dBA average L90		39 dBA average L90	- 3 dBA
LaChappa Residence 32.639511, -116.377481 7/19/2019 – 7/23/2019	53 dBA Ldn	LT3	53 dBA Ldn	0 dBA
	39 dBA average L90		37 dBA average L90	+ 2 dBA
Parrish Residence 32.701340, -116.391991 7/19/2019 – 7/23/2019	39 dBA Ldn	LT6	45 dBA Ldn	- 6 dBA
	26 dBA average L90		35 dBA average L90	- 9 dBA
Consolin Residence 32.600070, -116.383701 7/19/2019 – 7/23/2019	38 dBA Ldn	LT13	50 dBA Ldn	- 12 dBA
	27 dBA average L90		37 dBA average L90	- 10 dBA



O3-7
Cont.



The measurements were configured to align with the hourly periods of the day. The partial-hour periods at the beginning and end of the measurements were omitted from the calculations. The following adjustments were made to the measured sound level data:

Tisdale Residence:

7/16, 22:00 – 23:00 – The hourly Leq was artificially high due to a short-term event. This anomalous sound level was removed from the Ldn calculation.

7/17, 23:00 – 00:00 – The hourly Leq was artificially high due to a short-term event. This anomalous sound level was removed from the Ldn calculation.

7/18, 06:00 – 07:00 – The hourly Leq was artificially high due to a short-term event. This anomalous sound level was removed from the Ldn calculation.

7/18, 07:00 – 08:00 – The hourly Leq was artificially high due to a short-term event. This anomalous sound level was removed from the Ldn calculation.

Morrison Residence:

7/16, 22:00 – 23:00 – The hourly Leq was artificially high due to a short-term event. This anomalous sound level was removed from the Ldn calculation.

7/17, 23:00 – 00:00 – The hourly Leq was artificially high due to a short-term event. This anomalous sound level was removed from the Ldn calculation.

DeGroot Residence:

7/16, 22:00 – 23:00 – The hourly Leq was artificially high due to a short-term event. This anomalous sound level was removed from the Ldn calculation.

7/17, 23:00 – 00:00 – The hourly Leq was artificially high due to a short-term event. This anomalous sound level was removed from the Ldn calculation.

Consolin Residence:

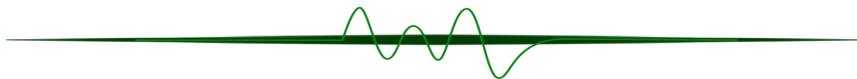
7/20, 22:00 – 23:00 – The hourly Leq was artificially high due to a short-term event. This anomalous sound level was removed from the Ldn calculation.

7/21, 16:00 – 17:00 – The hourly Leq was artificially high due to a short-term event. This anomalous sound level was removed from the Ldn calculation.

7/23, 05:00 – 06:00 – The hourly Leq was artificially high due to a short-term event. This anomalous sound level was removed from the Ldn calculation.

7/23, 07:00 – 08:00 – The hourly Leq was artificially high due to a short-term event. This anomalous sound level was removed from the Ldn calculation.

O3-8





Conclusions

At five locations, the measured Ldn ambient sound levels were 6-23 dBA lower than those presented in the Dudek report. At four locations, the measured average L90 sound levels were 9-14 dBA lower than those presented in the Dudek report.

03-9

Please refer to the dBF Associates Noise / Acoustical Review of the Campo Wind Project, dated July 8, 2019, for further information.

03-10

Please contact me at 619-609-0712 x102 if you have any questions.

Sincerely,

dBF ASSOCIATES, INC.



Steven Fiedler, INCE

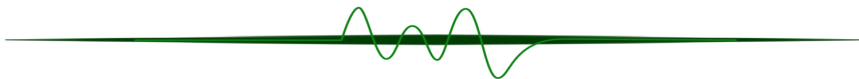
Attachments

- Figure 1. Vicinity Map
- Figure 2. Ambient Sound Level Measurement Locations
- Ambient Sound Level Measurement Data

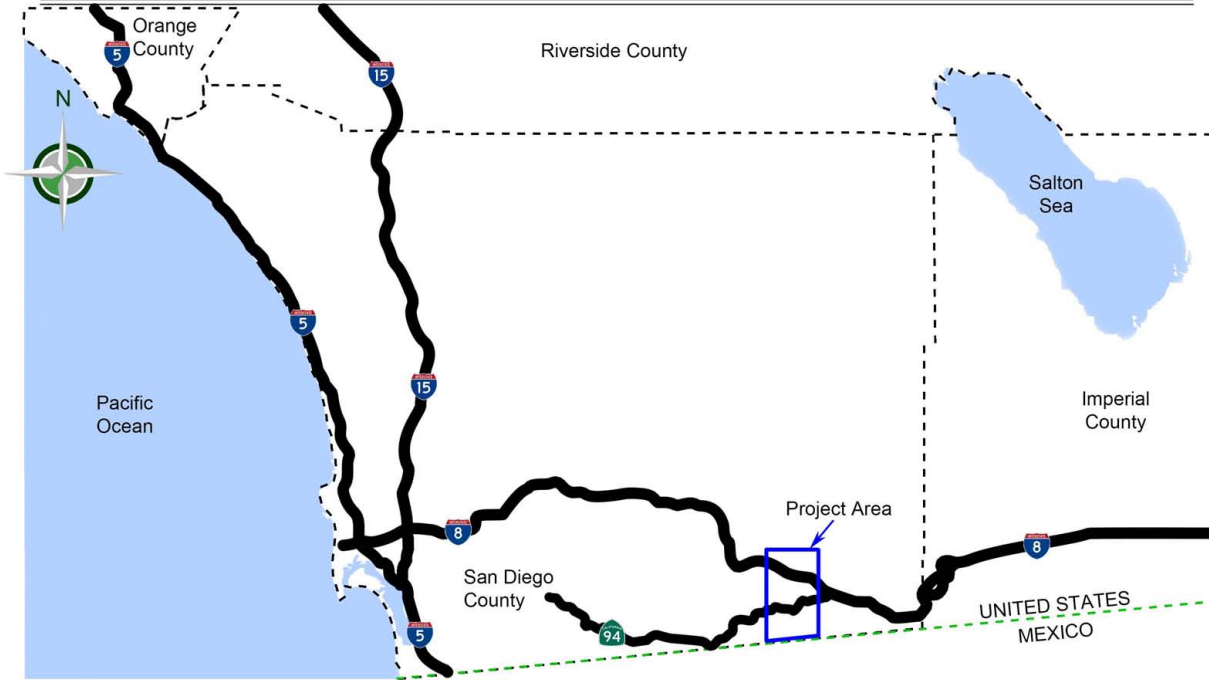
References

Weather Underground (wunderground.com). 2019. Weather Station ID: KCABOULE8. Station Name: Tierra del Sol – SDAA. Latitude / Longitude: 32.613° N, -116.333° W. Boulevard, CA.

Dudek. 2019. Draft Acoustical Analysis Report for the Campo Wind Project with Boulder Brush Facilities. May.



Long-Term Ambient Sound Level Measurements
Boulevard, Campo, & Pine Valley, California

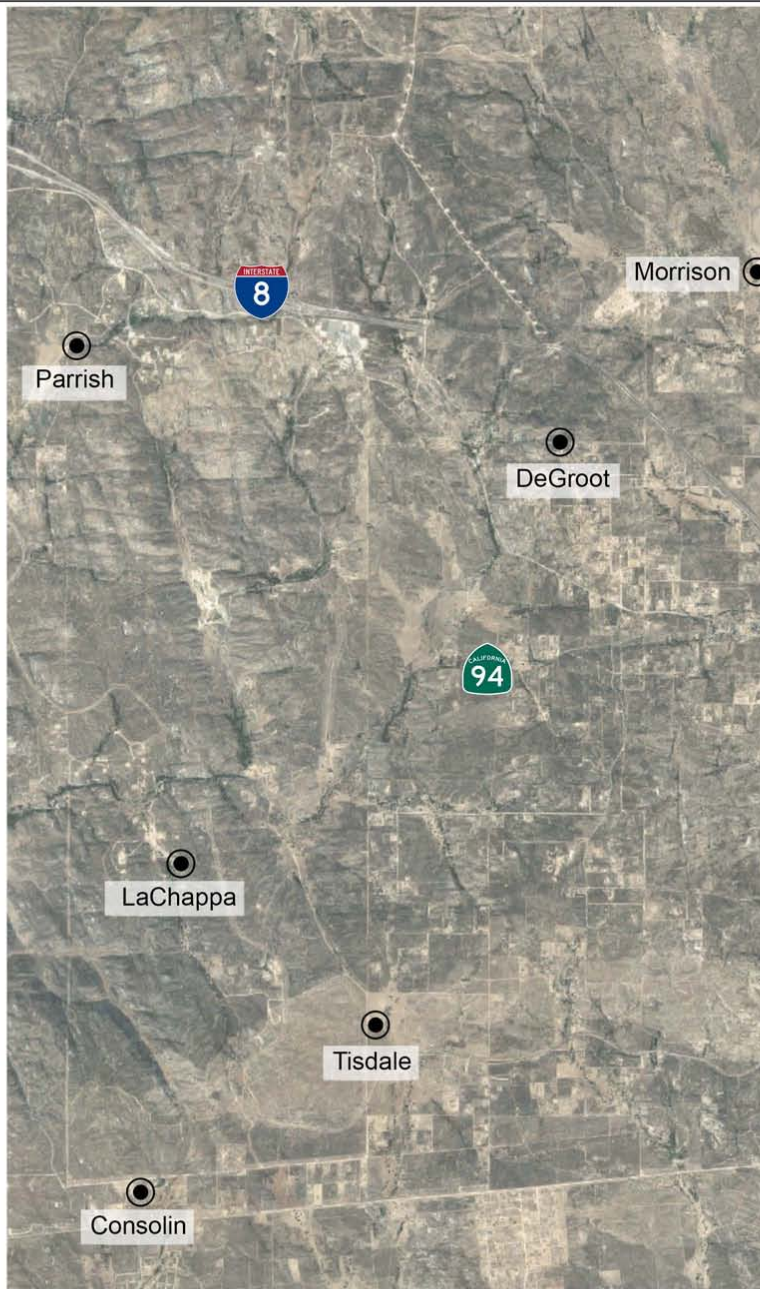


O3-11



FIGURE 1
Vicinity Map

*Long-Term Ambient Sound Level Measurements
Boulevard, Campo, & Pine Valley, California*



O3-11
Cont.

FIGURE 2
Ambient Sound Level Measurement Locations

Tisdale	Start	End	Time (s)	Duration (s)	Leq (dB)	SEL (dB)	Lmin (dB)	Lmax (dB)	Peak (dB)	UWPeak (dB)	L1.00 (dB)	L10.00 (dB)	L50.00 (dB)	L90.00 (dB)
7/16/19		12:00	0	408	50.0	76.1	24.7	69.6	88.5	97.2	62.5	53.0	35.8	26.5
7/16/19	12:00	13:00	409	3600	46.3	81.9	23.7	57.8	75.5	101.2	56.5	52.7	34.1	26.7
7/16/19	13:00	14:00	4009	3600	43.2	78.8	23.6	57.7	75.2	101.2	55.9	46.9	32.2	26.7
7/16/19	14:00	15:00	7609	3600	40.1	75.7	24.8	55.6	72.5	106.1	52.9	41.3	32.1	27.5
7/16/19	15:00	16:00	11209	3600	40.2	75.7	25.2	63.0	78.1	109.2	53.8	38.6	31.5	27.9
7/16/19	16:00	17:00	14809	3600	34.3	69.9	25.1	53.7	73.4	101.2	43.1	37.0	31.4	27.6
7/16/19	17:00	18:00	18409	3600	43.3	78.9	25.9	66.4	80.9	101.2	58.9	38.4	32.2	28.5
7/16/19	18:00	19:00	22009	3600	34.2	69.8	23.5	56.4	80.2	95.2	45.5	36.4	29.5	25.9
7/16/19	19:00	20:00	25609	3600	31.4	67.0	21.3	50.9	69.5	91.1	42.7	32.8	25.1	22.4
7/16/19	20:00	21:00	29209	3600	25.4	61.0	20.9	44.4	73.0	35.6	35.5	26.9	22.5	21.3
7/16/19	21:00	22:00	32809	3600	34.1	69.7	20.7	52.2	66.1	35.6	47.3	36.6	24.7	21.6
7/16/19	22:00	23:00	36409	3600	44.5	80.0	21.0	65.7	79.9	94.0	58.4	38.8	24.1	21.5
7/16/19	23:00	0:00	40009	3600	33.3	68.9	21.1	51.9	65.6	35.6	46.8	35.8	23.7	21.7
7/17/19	0:00	1:00	43609	3600	25.1	60.7	20.9	41.8	64.3	35.6	34.6	27.4	22.6	21.3
7/17/19	1:00	2:00	47209	3600	22.2	57.8	20.6	34.6	60.8	35.6	27.9	23.8	21.6	20.6
7/17/19	2:00	3:00	50809	3600	31.2	66.8	20.6	51.2	69.7	35.6	46.3	26.7	21.9	20.6
7/17/19	3:00	4:00	54409	3600	22.8	58.3	20.6	40.7	68.5	35.6	30.1	23.5	21.6	20.6
7/17/19	4:00	5:00	58009	3600	22.6	58.1	20.9	36.5	63.5	35.6	28.2	23.0	21.7	21.1
7/17/19	5:00	6:00	61609	3600	23.4	59.0	21.0	33.5	56.7	35.6	30.9	24.8	22.4	21.3
7/17/19	6:00	7:00	65209	3600	27.9	63.5	20.9	43.8	70.0	35.6	37.4	31.2	24.0	21.4
7/17/19	7:00	8:00	68809	3600	31.3	66.9	22.6	52.7	70.2	35.6	41.0	35.0	26.6	23.6
7/17/19	8:00	9:00	72409	3600	38.8	74.3	24.1	59.2	75.4	89.2	52.0	38.2	28.5	26.0
7/17/19	9:00	10:00	76009	3600	35.7	71.2	25.3	53.5	72.1	91.1	50.2	33.0	27.8	26.4
7/17/19	10:00	11:00	79609	3600	44.8	80.4	25.1	64.4	80.3	98.0	58.0	46.1	28.6	26.3
7/17/19	11:00	12:00	83209	3600	43.7	79.3	24.8	57.8	75.6	94.0	55.4	47.3	30.1	26.7
7/17/19	12:00	13:00	86809	3600	43.9	79.5	24.7	63.7	94.4	98.0	55.6	48.3	31.3	26.4
7/17/19	13:00	14:00	90409	3600	45.4	81.0	23.8	64.2	93.8	98.7	56.7	47.4	29.6	26.0
7/17/19	14:00	15:00	94009	3600	37.0	72.6	23.8	53.5	72.9	98.7	51.3	37.7	30.2	26.1
7/17/19	15:00	16:00	97609	3600	33.1	68.7	23.3	49.0	67.4	105.4	42.9	35.7	29.6	25.8
7/17/19	16:00	17:00	101209	3600	31.0	66.5	24.8	44.0	67.8	98.7	39.9	33.6	28.7	26.5
7/17/19	17:00	18:00	104809	3600	34.2	69.8	25.7	45.8	71.4	102.7	42.2	37.9	31.7	28.0
7/17/19	18:00	19:00	108409	3600	32.6	68.2	24.3	54.1	75.5	97.2	41.2	35.0	29.3	26.0
7/17/19	19:00	20:00	112009	3600	31.2	66.8	21.6	51.3	70.0	96.3	42.7	34.5	25.4	22.7
7/17/19	20:00	21:00	115609	3600	36.6	72.1	21.0	61.0	88.5	89.2	51.6	27.7	22.9	21.5
7/17/19	21:00	22:00	119209	3600	27.5	63.0	21.1	42.6	65.3	35.6	38.4	30.2	21.9	21.2
7/17/19	22:00	23:00	122809	3600	28.7	64.2	21.1	42.5	59.9	35.6	40.2	31.1	22.6	21.4
7/17/19	23:00	0:00	126409	3600	51.3	86.9	20.9	78.2	92.3	98.7	55.3	32.6	24.2	22.1
7/18/19	0:00	1:00	130009	3600	23.6	59.1	20.5	38.0	59.9	35.6	33.0	24.9	21.9	20.6

O3-12



7/18/19	1:00	2:00	133609	3600	26.8	62.4	20.5	42.6	64.5	35.6	40.4	25.7	21.5	20.5
7/18/19	2:00	3:00	137209	3600	26.4	62.0	20.5	45.0	72.4	35.6	40.4	24.6	21.7	20.6
7/18/19	3:00	4:00	140809	3600	29.6	65.2	20.8	51.6	64.5	35.6	44.0	25.1	22.7	21.4
7/18/19	4:00	5:00	144409	3600	23.3	58.9	21.0	41.0	61.6	35.6	30.8	24.1	22.2	21.2
7/18/19	5:00	6:00	148009	3600	24.9	60.5	21.8	39.0	53.6	35.6	32.0	26.9	23.7	22.4
7/18/19	6:00	7:00	151609	3600	48.0	83.6	22.5	76.4	92.0	94.0	59.5	41.1	28.4	24.7
7/18/19	7:00	8:00	155209	3600	48.2	83.7	24.2	75.3	93.6	95.2	61.1	44.3	34.5	27.7
7/18/19	8:00	9:00	158809	3600	36.5	72.1	24.1	56.5	77.7	92.7	48.9	40.1	30.4	27.0
7/18/19	9:00	10:00	162409	3600	36.4	72.0	25.7	60.4	80.9	94.0	48.1	38.0	30.1	27.4
7/18/19	10:00	11:00	166009	3600	41.4	77.0	27.5	60.9	86.1	97.2	54.3	43.0	34.1	29.6
7/18/19	11:00	12:00	169609	3600	47.9	83.5	27.1	75.6	94.0	100.1	55.4	42.4	34.1	30.2
7/18/19	12:00	13:00	173209	3600	41.2	76.8	24.9	55.6	73.9	100.1	52.9	44.6	32.2	27.4
7/18/19	13:00	14:00	176809	3600	39.0	74.6	24.6	54.7	73.1	100.1	52.4	41.4	33.5	29.0
7/18/19	14:00	15:00	180409	3600	41.6	77.1	24.9	67.0	85.8	103.2	52.3	40.2	33.7	29.1
7/18/19	15:00	16:00	184009	3600	35.7	71.3	24.8	48.9	65.6	98.7	44.1	39.5	32.7	28.4
7/18/19	16:00	17:00	187609	3600	43.5	79.1	26.3	68.2	89.0	104.7	53.1	40.6	32.5	29.3
7/18/19	17:00	18:00	191209	3600	34.0	69.6	24.6	47.3	75.2	101.8	43.1	37.4	31.2	27.9
7/18/19	18:00	19:00	194809	3600	35.3	70.9	23.1	57.7	73.5	101.8	43.9	36.8	28.8	25.3
7/18/19	19:00	20:00	198409	3600	33.6	69.2	22.5	53.7	83.8	92.7	44.5	37.2	26.1	23.6
7/18/19	20:00	21:00	202009	3600	31.5	67.1	21.7	50.4	67.5	35.6	43.0	34.9	24.1	22.4
7/18/19	21:00	22:00	205609	3600	29.9	65.5	21.8	46.9	74.7	35.6	40.8	33.0	24.0	22.3
7/18/19	22:00	23:00	209209	3600	29.2	64.8	21.6	45.9	75.0	35.6	39.9	33.0	23.8	22.3
7/18/19	23:00	0:00	212809	3600	28.4	64.0	21.4	47.9	71.2	35.6	40.7	29.6	23.4	22.1
7/19/19	0:00	1:00	216409	3600	27.7	63.3	21.2	48.6	66.8	35.6	40.1	27.8	22.1	21.2
7/19/19	1:00	2:00	220009	3600	27.1	62.7	20.9	47.9	61.6	35.6	40.5	23.3	21.7	21.1
7/19/19	2:00	3:00	223609	3600	22.5	58.0	20.9	33.1	59.7	35.6	26.6	23.7	22.1	21.2
7/19/19	3:00	4:00	227209	3600	24.5	60.1	21.0	44.6	63.2	35.6	31.9	25.9	22.5	21.3
7/19/19	4:00	5:00	230809	3600	23.6	59.2	21.0	41.2	63.2	35.6	29.6	24.9	22.5	21.3
7/19/19	5:00	6:00	234409	3600	24.7	60.2	21.6	38.8	56.5	35.6	30.8	26.5	23.7	22.3
7/19/19	6:00	7:00	238009	3600	32.7	68.3	22.3	53.5	75.8	35.6	44.0	34.3	28.2	23.9
7/19/19	7:00	8:00	241609	3600	35.8	71.4	22.8	52.0	70.2	89.2	49.9	36.1	30.1	25.2
7/19/19	8:00	9:00	245209	3600	36.1	71.7	23.3	57.9	78.0	96.3	49.6	35.4	27.8	24.9
7/19/19	9:00	10:00	248809	3600	35.2	70.8	26.6	55.9	75.0	101.2	45.3	37.6	30.8	28.2
7/19/19	10:00	11:00	252409	3600	38.5	74.0	26.8	60.0	73.4	98.0	50.1	40.1	32.4	29.1
7/19/19	11:00	12:00	256009	3600	37.3	72.9	28.0	54.6	79.0	99.4	48.4	40.1	33.7	30.2
7/19/19	12:00		259609	2873	43.5	78.1	26.3	65.6	87.4	102.3	53.2	45.1	36.8	30.4

O3-12
Cont.

Morrison	Start	End	Time (s)	Duration (s)	Leq (dB)	SEL (dB)	Lmin (dB)	Lmax (dB)	Peak (dB)	UWPeak (dB)	L1.00 (dB)	L10.00 (dB)	L50.00 (dB)	L90.00 (dB)
7/16/19		13:00	0	889	45.9	75.4	33.1	60.2	80.5	97.6	56.0	50.4	40.0	35.5
7/16/19	13:00	14:00	890	3600	42.5	78.0	31.0	66.1	85.6	103.2	52.5	43.3	39.2	35.2
7/16/19	14:00	15:00	4490	3600	43.0	78.6	34.1	61.6	79.9	104.6	52.6	45.1	40.8	37.1
7/16/19	15:00	16:00	8090	3600	45.1	80.7	34.6	64.2	81.7	103.6	56.1	47.0	41.6	37.6
7/16/19	16:00	17:00	11690	3600	42.3	77.9	34.9	55.3	73.7	104.3	50.5	44.7	40.9	37.7
7/16/19	17:00	18:00	15290	3600	42.8	78.4	36.1	57.9	76.9	102.9	49.5	45.2	41.6	38.7
7/16/19	18:00	19:00	18890	3600	42.3	77.9	35.4	59.2	78.1	101.6	50.2	44.5	41.0	38.1
7/16/19	19:00	20:00	22490	3600	42.2	77.8	33.3	65.0	79.3	101.1	49.7	43.0	39.3	35.9
7/16/19	20:00	21:00	26090	3600	36.2	71.8	29.1	44.2	72.3	96.8	42.4	38.7	35.3	32.3
7/16/19	21:00	22:00	29690	3600	40.7	76.3	28.6	61.6	75.2	96.0	53.2	40.5	34.0	30.7
7/16/19	22:00	23:00	33290	3600	54.9	90.5	31.0	74.5	89.5	98.9	69.3	52.2	41.8	34.8
7/16/19	23:00	0:00	36890	3600	41.3	76.9	27.8	52.9	68.5	94.1	49.6	45.8	34.5	30.5
7/17/19	0:00	1:00	40490	3600	38.7	74.3	30.9	46.3	73.0	99.5	44.4	42.4	37.4	33.1
7/17/19	1:00	2:00	44090	3600	41.8	77.4	31.7	49.5	68.7	98.9	48.7	46.5	39.4	34.4
7/17/19	2:00	3:00	47690	3600	44.1	79.7	32.0	49.8	73.4	98.9	48.9	47.8	40.8	35.4
7/17/19	3:00	4:00	51290	3600	37.4	73.0	28.6	46.7	61.8	95.1	42.7	40.5	36.6	30.9
7/17/19	4:00	5:00	54890	3600	34.2	69.7	27.3	48.6	61.1	85.6	42.0	36.9	31.5	29.3
7/17/19	5:00	6:00	58490	3600	34.5	70.1	27.6	49.2	66.9	85.6	43.3	38.2	31.5	29.3
7/17/19	6:00	7:00	62090	3600	40.3	75.8	27.5	61.5	80.1	85.6	53.2	39.5	32.4	30.2
7/17/19	7:00	8:00	65690	3600	37.8	73.4	28.7	52.9	74.2	91.6	48.7	40.2	34.6	31.2
7/17/19	8:00	9:00	69290	3600	37.6	73.1	31.9	53.2	72.1	94.6	46.0	39.5	35.7	33.8
7/17/19	9:00	10:00	72890	3600	38.8	74.4	29.8	62.2	79.0	96.0	49.3	38.5	34.7	32.6
7/17/19	10:00	11:00	76490	3600	36.6	72.2	26.4	54.6	71.3	95.1	47.7	38.6	33.2	29.6
7/17/19	11:00	12:00	80090	3600	35.4	70.9	26.7	56.1	71.0	92.3	46.4	37.1	31.6	29.0
7/17/19	12:00	13:00	83690	3600	36.2	71.8	28.1	51.8	73.4	96.8	44.6	39.5	33.7	30.6
7/17/19	13:00	14:00	87290	3600	37.1	72.7	29.3	48.1	68.5	100.1	44.8	40.3	35.1	31.2
7/17/19	14:00	15:00	90890	3600	44.4	80.0	29.5	69.5	85.4	101.1	56.6	41.6	36.4	32.2
7/17/19	15:00	16:00	94490	3600	38.2	73.8	30.5	48.2	74.2	101.6	44.3	41.2	37.0	33.6
7/17/19	16:00	17:00	98090	3600	40.4	75.9	33.7	50.5	71.9	101.6	45.9	42.7	39.6	36.8
7/17/19	17:00	18:00	101690	3600	41.4	76.9	33.0	53.9	74.0	106.9	48.7	43.5	40.3	37.1
7/17/19	18:00	19:00	105290	3600	42.7	78.3	33.9	56.8	74.3	101.1	51.9	44.7	40.8	37.6
7/17/19	19:00	20:00	108890	3600	41.1	76.7	30.6	58.9	74.1	100.1	53.9	41.5	37.1	33.5
7/17/19	20:00	21:00	112490	3600	34.5	70.0	28.9	50.1	77.0	94.1	43.5	35.6	32.8	30.8
7/17/19	21:00	22:00	116090	3600	33.3	68.8	26.6	46.4	73.7	89.1	41.6	35.5	31.2	29.6
7/17/19	22:00	23:00	119690	3600	36.9	72.5	25.3	54.6	68.6	85.6	45.8	40.1	31.1	28.2
7/17/19	23:00	0:00	123290	3600	44.0	79.6	24.7	53.6	68.4	85.6	50.9	49.4	33.3	27.8
7/18/19	0:00	1:00	126890	3600	42.8	78.4	25.0	51.5	63.3	88.0	50.6	49.0	32.2	27.1

O3-12
Cont.

7/18/19	1:00	2:00	130490	3600	40.7	76.3	27.9	49.9	62.5	85.6	49.5	47.7	32.7	30.0
7/18/19	2:00	3:00	134090	3600	42.5	78.1	28.3	50.3	63.2	35.6	49.4	47.6	37.3	30.0
7/18/19	3:00	4:00	137690	3600	35.8	71.4	27.3	49.5	64.7	35.6	48.0	34.0	30.5	28.8
7/18/19	4:00	5:00	141290	3600	35.2	70.8	28.1	46.5	66.2	88.0	43.4	39.0	32.4	29.9
7/18/19	5:00	6:00	144890	3600	34.5	70.0	27.1	47.3	62.2	35.6	43.2	37.6	32.1	29.7
7/18/19	6:00	7:00	148490	3600	38.8	74.4	29.2	54.9	76.1	35.6	50.1	40.9	34.4	31.5
7/18/19	7:00	8:00	152090	3600	43.7	79.3	30.0	65.5	78.5	101.6	56.7	44.3	37.8	33.6
7/18/19	8:00	9:00	155690	3600	39.3	74.9	33.3	49.1	66.6	98.3	46.5	42.1	37.8	35.5
7/18/19	9:00	10:00	159290	3600	38.7	74.3	32.7	52.6	68.1	101.1	47.1	40.4	37.6	34.8
7/18/19	10:00	11:00	162890	3600	42.9	78.5	31.3	65.6	72.4	98.3	50.6	43.5	37.2	34.4
7/18/19	11:00	12:00	166490	3600	38.5	74.0	30.7	57.5	69.6	104.3	47.0	40.8	36.3	33.2
7/18/19	12:00	13:00	170090	3600	39.8	75.4	31.5	54.9	73.5	105.2	48.8	42.8	37.3	34.2
7/18/19	13:00	14:00	173690	3600	40.2	75.8	32.5	51.0	70.0	103.2	47.5	43.1	38.8	35.5
7/18/19	14:00	15:00	177290	3600	38.8	74.4	31.7	51.6	71.5	99.5	45.5	41.9	37.4	34.5
7/18/19	15:00	16:00	180890	3600	41.9	77.5	34.4	53.1	72.6	102.5	48.9	44.8	40.5	37.0
7/18/19	16:00	17:00	184490	3600	42.5	78.1	33.8	58.6	78.8	108.7	49.8	45.2	41.2	37.3
7/18/19	17:00	18:00	188090	3600	43.3	78.9	36.8	64.9	85.1	107.6	48.9	45.4	42.1	39.7
7/18/19	18:00	19:00	191690	3600	45.0	80.6	33.7	65.8	84.4	103.6	55.9	46.8	41.6	37.9
7/18/19	19:00	20:00	195290	3600	42.3	77.9	30.6	60.7	75.8	97.6	55.9	42.1	36.7	33.3
7/18/19	20:00	21:00	198890	3600	37.4	72.9	29.0	52.5	74.0	91.6	44.7	41.2	33.2	30.6
7/18/19	21:00	22:00	202490	3600	35.0	70.6	30.2	47.9	57.6	91.6	42.8	37.3	33.5	31.8
7/18/19	22:00	23:00	206090	3600	34.5	70.1	30.3	49.1	63.5	91.6	39.7	36.3	33.9	32.0
7/18/19	23:00	0:00	209690	3600	35.4	71.0	29.4	43.1	60.7	90.0	42.2	38.9	32.9	31.0
7/19/19	0:00	1:00	213290	3600	38.8	74.4	29.8	52.5	62.9	92.9	45.9	41.9	36.5	32.4
7/19/19	1:00	2:00	216890	3600	37.2	72.8	26.9	52.7	64.9	92.9	46.6	40.0	34.7	30.3
7/19/19	2:00	3:00	220490	3600	35.7	71.3	29.6	44.8	63.7	96.8	42.9	38.8	33.4	31.4
7/19/19	3:00	4:00	224090	3600	35.1	70.7	29.3	45.7	65.6	95.1	42.7	37.5	33.5	31.3
7/19/19	4:00	5:00	227690	3600	35.7	71.3	31.8	48.5	65.5	98.3	41.3	37.6	34.9	33.2
7/19/19	5:00	6:00	231290	3600	36.4	71.9	31.3	47.7	64.3	92.9	42.4	38.5	35.5	33.4
7/19/19	6:00	7:00	234890	3600	39.4	75.0	31.1	59.1	74.9	96.4	50.8	40.4	36.6	33.1
7/19/19	7:00	8:00	238490	3600	40.7	76.2	32.5	60.7	74.2	101.1	49.3	42.0	38.5	36.2
7/19/19	8:00	9:00	242090	3600	42.4	78.0	35.0	57.1	76.5	103.2	46.8	44.5	42.0	38.8
7/19/19	9:00	10:00	245690	3600	41.8	77.3	36.6	52.0	76.2	104.9	47.8	43.9	40.9	38.6
7/19/19	10:00	11:00	249290	3600	43.4	79.0	36.4	60.6	74.7	103.2	53.8	44.8	40.8	38.4
7/19/19	11:00	12:00	252890	3600	41.5	77.1	34.3	53.4	72.4	104.9	48.2	44.1	40.4	36.8
7/19/19	12:00	13:00	256490	3600	40.5	76.1	33.0	54.4	72.9	106.1	46.4	43.1	39.5	36.3
7/19/19	13:00	14:00	260090	3600	41.3	76.9	32.8	64.6	82.6	101.1	48.7	42.9	39.3	35.9
7/19/19	14:00		263690	1671	42.4	74.7	34.5	55.5	84.4	104.3	49.2	45.2	41.2	37.1

O3-12
Cont.

DeGroot	Start	End	Time (s)	Duration (s)	Leq (dB)	SEL (dB)	Lmin (dB)	Lmax (dB)	Peak (dB)	UWPeak (dB)	L1.00 (dB)	L10.00 (dB)	L50.00 (dB)	L90.00 (dB)
7/16/19		14:00	0	1966	41.1	74.0	32.5	53.9	80.6	106.4	48.1	43.9	39.6	35.2
7/16/19	14:00	15:00	1966	3600	43.1	78.6	34.1	61.8	74.2	110.7	49.6	44.9	41.4	38.3
7/16/19	15:00	16:00	5566	3600	42.9	78.5	34.8	55.6	75.5	114.0	49.5	45.5	41.9	38.7
7/16/19	16:00	17:00	9166	3600	42.3	77.9	36.0	54.1	74.4	107.1	48.9	44.8	41.2	38.2
7/16/19	17:00	18:00	12766	3600	43.1	78.7	35.5	56.0	73.3	107.1	50.2	45.6	41.7	39.0
7/16/19	18:00	19:00	16366	3600	45.6	81.2	36.6	63.5	77.8	108.8	55.9	46.4	42.9	40.5
7/16/19	19:00	20:00	19966	3600	42.3	77.9	36.6	58.7	79.8	106.6	48.5	44.5	41.5	38.9
7/16/19	20:00	21:00	23566	3600	39.2	74.8	33.6	51.7	68.7	106.0	45.6	40.9	38.5	36.7
7/16/19	21:00	22:00	27166	3600	42.4	78.0	33.0	66.3	80.7	99.3	55.1	40.9	37.0	35.0
7/16/19	22:00	23:00	30766	3600	57.8	93.3	34.0	78.3	91.9	101.8	72.8	49.1	37.7	35.8
7/16/19	23:00	0:00	34366	3600	43.2	78.8	35.2	64.9	78.7	100.2	56.1	41.7	38.5	37.1
7/17/19	0:00	1:00	37966	3600	37.8	73.3	31.5	49.7	71.7	98.8	44.9	39.2	36.9	34.7
7/17/19	1:00	2:00	41566	3600	33.4	69.0	29.3	40.6	68.2	102.1	38.4	34.9	33.0	31.3
7/17/19	2:00	3:00	45166	3600	36.3	71.9	31.2	51.2	67.6	102.1	45.7	37.3	34.9	33.2
7/17/19	3:00	4:00	48766	3600	35.3	70.9	29.8	45.6	63.0	99.8	40.4	36.9	34.8	33.0
7/17/19	4:00	5:00	52366	3600	34.6	70.2	30.2	43.0	72.6	97.1	39.9	36.8	33.8	32.1
7/17/19	5:00	6:00	55966	3600	34.0	69.6	29.1	48.5	79.7	92.2	40.4	35.9	33.1	31.2
7/17/19	6:00	7:00	59566	3600	34.7	70.2	29.6	55.3	75.6	88.2	40.2	36.4	33.6	31.7
7/17/19	7:00	8:00	63166	3600	37.0	72.6	28.4	55.2	63.7	92.2	47.5	39.0	32.6	30.2
7/17/19	8:00	9:00	66766	3600	42.9	78.5	26.5	73.1	94.1	114.0	53.7	39.3	31.7	29.0
7/17/19	9:00	10:00	70366	3600	33.5	69.0	26.4	47.4	64.1	102.8	42.8	35.9	31.0	28.8
7/17/19	10:00	11:00	73966	3600	35.5	71.1	27.0	52.6	71.4	101.8	46.0	37.9	32.4	29.6
7/17/19	11:00	12:00	77566	3600	35.1	70.7	27.2	50.1	68.0	97.1	44.8	37.6	32.4	30.1
7/17/19	12:00	13:00	81166	3600	39.7	75.3	27.4	57.2	78.6	104.9	52.7	41.2	34.5	31.5
7/17/19	13:00	14:00	84766	3600	36.5	72.1	29.6	49.6	74.2	108.1	43.1	39.1	35.1	32.3
7/17/19	14:00	15:00	88366	3600	38.9	74.5	30.5	57.9	87.1	111.9	47.0	41.7	36.6	33.7
7/17/19	15:00	16:00	91966	3600	42.5	78.1	32.0	64.5	81.7	112.0	53.4	44.2	37.9	34.3
7/17/19	16:00	17:00	95566	3600	41.4	77.0	32.8	58.5	86.9	110.7	49.2	43.9	39.5	36.0
7/17/19	17:00	18:00	99166	3600	42.9	78.5	33.1	60.9	91.1	111.8	52.3	45.8	40.1	36.8
7/17/19	18:00	19:00	102766	3600	41.6	77.2	34.2	57.2	80.5	109.6	49.0	44.4	39.6	37.0
7/17/19	19:00	20:00	106366	3600	40.5	76.0	33.3	52.5	82.3	105.3	47.0	43.2	39.2	36.7
7/17/19	20:00	21:00	109966	3600	39.4	75.0	33.4	50.3	74.0	98.3	44.1	41.6	38.7	36.5
7/17/19	21:00	22:00	113566	3600	39.1	74.7	31.6	52.9	65.6	92.2	46.2	41.7	37.8	34.8
7/17/19	22:00	23:00	117166	3600	38.9	74.5	28.4	54.9	72.7	83.7	49.7	41.6	35.2	31.5
7/17/19	23:00	0:00	120766	3600	43.7	79.2	25.9	64.4	78.1	92.2	58.7	41.7	33.5	29.3
7/18/19	0:00	1:00	124366	3600	32.9	68.4	26.8	44.9	62.9	35.6	41.0	34.9	31.5	29.1
7/18/19	1:00	2:00	127966	3600	33.0	68.6	26.4	52.5	67.8	88.2	40.8	34.5	31.2	28.7
7/18/19	2:00	3:00	131566	3600	35.2	70.8	28.5	54.3	66.6	89.7	47.1	34.6	32.4	30.5

O3-12
Cont.

7/18/19	3:00	4:00	135166	3600	34.3	69.9	28.9	49.2	65.0	88.2	40.9	36.8	32.8	30.7
7/18/19	4:00	5:00	138766	3600	38.6	74.1	29.7	58.7	73.5	91.1	50.7	38.1	34.7	32.5
7/18/19	5:00	6:00	142366	3600	35.9	71.4	29.3	46.7	67.0	88.2	43.4	37.9	34.5	32.2
7/18/19	6:00	7:00	145966	3600	36.3	71.9	29.6	50.0	63.1	91.1	45.2	38.5	34.6	32.0
7/18/19	7:00	8:00	149566	3600	42.2	77.8	31.9	58.7	75.0	102.5	51.9	45.4	39.1	35.5
7/18/19	8:00	9:00	153166	3600	41.3	76.8	33.9	54.3	80.2	105.1	49.5	44.5	39.0	36.3
7/18/19	9:00	10:00	156766	3600	40.1	75.7	32.5	56.4	77.6	103.1	49.4	42.7	37.6	35.1
7/18/19	10:00	11:00	160366	3600	44.1	79.7	32.4	64.4	75.6	103.4	53.9	45.0	39.1	35.3
7/18/19	11:00	12:00	163966	3600	41.3	76.9	31.9	56.6	89.3	108.1	49.5	44.6	38.9	35.7
7/18/19	12:00	13:00	167566	3600	43.1	78.7	32.9	59.1	85.3	108.5	52.0	46.3	40.0	36.1
7/18/19	13:00	14:00	171166	3600	42.8	78.4	33.4	58.7	88.4	113.5	50.5	46.1	40.7	37.1
7/18/19	14:00	15:00	174766	3600	43.5	79.1	34.5	63.4	90.1	117.3	51.3	46.2	41.4	37.6
7/18/19	15:00	16:00	178366	3600	45.8	81.4	34.0	61.2	89.3	115.4	54.1	49.2	43.1	38.7
7/18/19	16:00	17:00	181966	3600	47.6	83.1	35.7	74.6	95.2	118.2	56.0	49.9	43.6	40.2
7/18/19	17:00	18:00	185566	3600	44.9	80.4	36.1	62.9	95.5	115.1	53.8	47.2	42.7	39.6
7/18/19	18:00	19:00	189166	3600	42.5	78.1	35.2	63.3	96.7	112.2	49.7	45.1	40.8	38.2
7/18/19	19:00	20:00	192766	3600	42.0	77.6	32.8	56.7	83.5	106.2	51.6	44.1	39.6	36.3
7/18/19	20:00	21:00	196366	3600	38.1	73.6	32.1	47.0	71.9	94.2	43.3	40.2	37.4	35.1
7/18/19	21:00	22:00	199966	3600	40.1	75.6	30.4	53.1	70.0	88.2	47.0	43.0	38.4	35.0
7/18/19	22:00	23:00	203566	3600	37.9	73.5	28.9	48.9	70.6	83.7	44.8	40.9	36.5	33.1
7/18/19	23:00	0:00	207166	3600	33.6	69.2	27.1	49.3	83.9	88.2	40.0	35.9	32.2	29.4
7/19/19	0:00	1:00	210766	3600	37.4	73.0	27.3	58.3	73.9	94.2	50.1	36.9	32.4	30.2
7/19/19	1:00	2:00	214366	3600	36.9	72.4	28.6	57.1	73.9	95.8	48.8	37.7	33.4	31.1
7/19/19	2:00	3:00	217966	3600	34.8	70.4	29.8	46.6	74.2	99.3	40.0	36.7	34.0	32.1
7/19/19	3:00	4:00	221566	3600	34.7	70.3	28.9	55.3	73.2	100.6	45.0	35.4	32.7	31.0
7/19/19	4:00	5:00	225166	3600	34.7	70.2	28.6	51.1	67.9	97.1	42.6	36.1	33.2	30.7
7/19/19	5:00	6:00	228766	3600	40.2	75.8	29.5	63.3	75.4	97.7	51.0	37.3	34.5	32.1
7/19/19	6:00	7:00	232366	3600	37.7	73.2	31.8	48.0	74.3	104.6	43.7	39.9	36.8	34.3
7/19/19	7:00	8:00	235966	3600	40.5	76.1	32.6	57.9	83.9	103.4	50.4	41.7	38.4	35.7
7/19/19	8:00	9:00	239566	3600	42.3	77.9	35.6	60.8	85.2	106.0	47.7	44.2	41.5	38.6
7/19/19	9:00	10:00	243166	3600	42.7	78.2	34.8	55.7	82.9	113.6	49.9	44.8	41.6	38.5
7/19/19	10:00	11:00	246766	3600	44.4	80.0	35.7	60.8	89.9	112.1	54.1	46.3	41.6	39.1
7/19/19	11:00	12:00	250366	3600	44.0	79.6	35.7	59.4	88.9	113.7	50.9	46.5	42.7	39.8
7/19/19	12:00	13:00	253966	3600	42.8	78.4	35.3	55.8	89.4	112.2	49.8	45.6	41.5	38.3
7/19/19	13:00	14:00	257566	3600	43.2	78.8	36.0	61.4	93.5	114.5	50.5	45.8	41.8	38.6
7/19/19	14:00	15:00	261166	3600	45.3	80.9	36.5	68.1	89.5	113.0	53.4	47.4	43.1	40.0
7/19/19	15:00		264766	236	50.4	74.1	39.3	64.6	83.3	110.4	60.8	53.6	46.2	42.3

O3-12
Cont.

LaChappa	Start	End	Time (s)	Duration (s)	Leq (dB)	SEL (dB)	Lmin (dB)	Lmax (dB)	Peak (dB)	UWPeak (dB)	L1.00 (dB)	L10.00 (dB)	L50.00 (dB)	L90.00 (dB)
7/19/19		15:00	0	3347	45.7	80.9	28.5	64.3	83.1	103.2	58.6	46.7	39.9	33.5
7/19/19	15:00	16:00	3347	3600	43.7	79.3	30.0	59.6	77.6	102.9	52.2	47.5	40.8	34.6
7/19/19	16:00	17:00	6947	3600	43.6	79.2	29.9	54.7	70.9	101.0	51.8	47.5	40.9	34.8
7/19/19	17:00	18:00	10547	3600	46.4	81.9	30.0	66.7	81.5	103.8	55.8	48.6	42.3	35.8
7/19/19	18:00	19:00	14147	3600	40.6	76.1	26.5	54.6	71.0	102.2	49.7	44.2	37.2	31.3
7/19/19	19:00	20:00	17747	3600	34.0	69.6	21.4	54.1	78.8	91.5	46.1	36.7	27.8	23.7
7/19/19	20:00	21:00	21347	3600	57.0	92.6	21.8	81.4	97.2	104.4	63.5	52.6	48.7	38.4
7/19/19	21:00	22:00	24947	3600	47.1	82.6	32.0	53.6	73.9	95.6	50.8	49.7	47.1	39.4
7/19/19	22:00	23:00	28547	3600	46.0	81.6	34.8	62.3	76.9	88.6	58.2	46.6	44.2	39.6
7/19/19	23:00	0:00	32147	3600	41.2	76.8	25.9	48.5	67.4	75.6	46.3	45.2	38.5	34.5
7/20/19	0:00	1:00	35747	3600	42.0	77.5	27.1	57.8	77.0	85.6	53.1	43.8	37.7	32.6
7/20/19	1:00	2:00	39347	3600	38.6	74.2	26.0	49.6	67.7	75.6	43.2	41.6	38.2	32.7
7/20/19	2:00	3:00	42947	3600	39.3	74.9	22.9	56.9	76.1	83.6	49.9	41.4	35.9	32.5
7/20/19	3:00	4:00	46547	3600	42.9	78.5	24.9	48.3	62.6	70.6	47.9	46.8	41.8	37.0
7/20/19	4:00	5:00	50147	3600	43.2	78.7	18.4	49.6	63.2	71.6	49.6	48.8	31.4	20.5
7/20/19	5:00	6:00	53747	3600	27.6	63.2	18.5	49.5	74.2	82.6	37.2	29.6	23.6	20.2
7/20/19	6:00	7:00	57347	3600	37.5	73.0	19.5	62.3	79.1	87.1	49.0	39.0	27.4	22.4
7/20/19	7:00	8:00	60947	3600	38.2	73.7	20.7	59.4	76.8	84.6	49.5	40.9	31.3	23.8
7/20/19	8:00	9:00	64547	3600	34.8	70.3	22.4	54.8	75.0	82.6	45.2	39.1	28.8	24.3
7/20/19	9:00	10:00	68147	3600	42.3	77.9	24.5	70.4	88.4	96.4	53.5	41.5	32.0	27.2
7/20/19	10:00	11:00	71747	3600	39.2	74.7	26.1	56.1	73.1	81.2	49.3	42.2	35.0	30.1
7/20/19	11:00	12:00	75347	3600	40.2	75.8	25.2	58.5	75.7	83.7	52.0	42.7	35.9	30.8
7/20/19	12:00	13:00	78947	3600	55.3	90.9	24.5	76.5	90.1	98.2	70.6	42.3	34.6	29.1
7/20/19	13:00	14:00	82547	3600	42.1	77.7	25.8	63.2	80.3	88.2	54.3	44.0	35.6	30.0
7/20/19	14:00	15:00	86147	3600	38.3	73.9	25.8	53.6	67.8	75.8	48.4	41.6	34.3	29.8
7/20/19	15:00	16:00	89747	3600	37.5	73.1	25.3	51.5	74.4	82.8	45.5	41.3	34.9	28.8
7/20/19	16:00	17:00	93347	3600	43.7	79.3	25.9	69.5	81.8	89.8	57.9	42.8	36.0	30.5
7/20/19	17:00	18:00	96947	3600	40.3	75.9	26.4	61.1	79.7	87.8	51.0	42.6	36.3	30.6
7/20/19	18:00	19:00	100547	3600	37.3	72.9	24.4	59.4	77.3	85.3	47.8	39.5	33.1	27.9
7/20/19	19:00	20:00	104147	3600	46.0	81.6	21.8	73.6	97.6	105.6	58.5	40.5	29.6	24.8
7/20/19	20:00	21:00	107747	3600	49.1	84.7	22.0	55.6	76.0	84.0	54.6	52.4	49.0	25.3
7/20/19	21:00	22:00	111347	3600	48.0	83.6	37.1	54.2	74.5	82.5	51.8	50.1	47.6	44.9
7/20/19	22:00	23:00	114947	3600	49.0	84.6	34.2	54.3	74.8	82.8	52.8	51.8	49.3	38.9
7/20/19	23:00	0:00	118547	3600	45.5	81.0	31.4	51.6	71.7	79.7	50.7	48.6	43.9	38.5
7/21/19	0:00	1:00	122147	3600	42.8	78.4	34.7	61.2	77.0	85.0	51.6	45.1	40.9	38.0
7/21/19	1:00	2:00	125747	3600	42.9	78.5	34.5	52.4	70.9	78.9	47.5	44.8	42.6	40.3
7/21/19	2:00	3:00	129347	3600	41.8	77.4	29.3	53.0	69.5	77.5	46.9	44.9	41.0	34.7
7/21/19	3:00	4:00	132947	3600	35.4	71.0	23.4	53.5	89.7	97.7	44.8	38.1	32.6	29.7

O3-12
Cont.

7/21/19	4:00	5:00	136547	3600	32.2	67.7	18.8	51.3	70.8	35.6	44.9	32.7	27.8	23.1
7/21/19	5:00	6:00	140147	3600	29.7	65.3	18.9	47.3	66.9	35.6	39.8	33.3	24.7	19.8
7/21/19	6:00	7:00	143747	3600	40.8	76.4	19.7	63.0	85.1	84.1	53.7	43.3	29.2	23.3
7/21/19	7:00	8:00	147347	3600	38.3	73.9	21.3	59.5	76.3	35.6	49.1	41.9	29.8	24.2
7/21/19	8:00	9:00	150947	3600	40.7	76.3	21.4	63.8	83.3	84.1	50.8	41.3	27.3	22.9
7/21/19	9:00	10:00	154547	3600	55.9	91.5	21.8	78.0	91.1	90.1	71.2	41.1	28.5	23.4
7/21/19	10:00	11:00	158147	3600	39.1	74.7	22.4	59.3	73.7	35.6	50.8	40.6	31.1	25.0
7/21/19	11:00	12:00	161747	3600	46.1	81.7	22.6	73.6	89.0	91.5	57.3	42.7	31.4	25.5
7/21/19	12:00	13:00	165347	3600	38.6	74.2	22.8	62.1	77.8	94.6	47.0	37.2	28.8	25.3
7/21/19	13:00	14:00	168947	3600	38.6	74.2	22.1	60.6	80.0	90.1	48.1	38.8	29.6	24.8
7/21/19	14:00	15:00	172547	3600	35.3	70.8	23.0	52.5	65.8	93.7	45.5	38.0	30.9	25.5
7/21/19	15:00	16:00	176147	3600	50.7	86.2	23.6	79.2	103.9	104.1	54.5	40.1	32.0	26.4
7/21/19	16:00	17:00	179747	3600	37.3	72.9	24.2	55.7	76.0	98.1	46.0	41.1	33.7	27.7
7/21/19	17:00	18:00	183347	3600	35.6	71.2	25.8	52.6	78.4	93.7	44.5	39.3	31.8	27.9
7/21/19	18:00	19:00	186947	3600	42.6	78.1	23.3	65.7	82.4	92.6	54.2	40.3	30.6	26.0
7/21/19	19:00	20:00	190547	3600	30.4	66.0	23.0	49.9	77.0	84.1	40.9	32.2	27.0	24.8
7/21/19	20:00	21:00	194147	3600	48.6	84.2	23.6	56.3	72.3	35.6	55.7	51.3	47.4	33.5
7/21/19	21:00	22:00	197747	3600	50.0	85.6	38.7	54.5	73.9	35.6	54.1	53.0	49.3	45.1
7/21/19	22:00	23:00	201347	3600	49.7	85.3	38.8	55.5	74.9	35.6	55.0	52.6	49.2	43.2
7/21/19	23:00	0:00	204947	3600	50.5	86.1	41.1	54.7	71.8	35.6	53.9	52.4	50.1	48.2
7/22/19	0:00	1:00	208547	3600	49.0	84.6	36.3	51.9	71.4	35.6	51.8	50.8	49.3	45.3
7/22/19	1:00	2:00	212147	3600	46.8	82.4	36.4	49.7	72.0	35.6	49.7	48.7	47.2	42.7
7/22/19	2:00	3:00	215747	3600	46.2	81.8	35.7	50.3	68.6	35.6	49.9	49.1	45.1	43.3
7/22/19	3:00	4:00	219347	3600	46.8	82.4	35.5	50.2	67.0	84.1	49.9	49.5	46.3	43.1
7/22/19	4:00	5:00	222947	3600	41.4	76.9	26.8	50.6	74.9	35.6	50.1	46.1	36.7	31.4
7/22/19	5:00	6:00	226547	3600	37.8	73.4	19.0	61.0	75.9	88.6	52.1	33.3	26.3	22.1
7/22/19	6:00	7:00	230147	3600	34.0	69.6	20.6	61.3	78.0	35.6	45.7	35.7	26.9	23.0
7/22/19	7:00	8:00	233747	3600	40.6	76.2	22.2	63.9	80.4	84.1	53.5	43.5	32.0	25.8
7/22/19	8:00	9:00	237347	3600	37.7	73.3	22.3	59.8	76.8	35.6	50.3	39.1	28.4	24.0
7/22/19	9:00	10:00	240947	3600	35.6	71.2	22.2	59.1	75.1	35.6	47.2	38.1	28.2	24.4
7/22/19	10:00	11:00	244547	3600	44.5	80.1	23.6	61.6	77.1	84.1	56.5	47.4	35.1	26.6
7/22/19	11:00	12:00	248147	3600	41.2	76.8	23.0	55.1	72.4	90.1	50.9	45.2	36.6	27.4
7/22/19	12:00	13:00	251747	3600	34.1	69.7	21.4	57.6	75.2	95.4	44.7	35.7	28.5	23.2
7/22/19	13:00	14:00	255347	3600	41.9	77.5	22.0	67.3	83.3	86.6	54.3	40.0	29.2	24.5
7/22/19	14:00	15:00	258947	3600	35.5	71.0	21.8	58.3	76.1	82.5	47.4	37.2	26.3	23.5
7/22/19	15:00	16:00	262547	3600	35.6	71.2	22.7	48.9	76.6	90.1	44.8	39.9	31.5	25.7
7/22/19	16:00	17:00	266147	3600	40.9	76.5	23.3	63.8	87.3	88.6	50.8	40.9	37.7	29.6
7/22/19	17:00	18:00	269747	3600	38.3	73.9	22.2	56.4	85.4	94.6	49.5	41.5	31.5	26.3
7/22/19	18:00	19:00	273347	3600	37.1	72.7	24.5	55.9	73.9	35.6	48.5	39.9	31.2	27.2

O3-12
Cont.

7/22/19	19:00	20:00	276947	3600	36.9	72.5	22.0	63.0	81.6	84.1	48.8	39.3	29.3	25.0
7/22/19	20:00	21:00	280547	3600	49.8	85.4	23.9	54.8	70.0	35.6	54.4	53.3	49.0	29.5
7/22/19	21:00	22:00	284147	3600	48.9	84.5	40.0	59.9	76.9	90.1	55.1	50.8	48.8	43.7
7/22/19	22:00	23:00	287747	3600	47.7	83.3	38.9	57.2	73.2	35.6	53.3	51.7	45.2	41.6
7/22/19	23:00	0:00	291347	3600	49.5	85.0	38.6	53.9	76.9	84.1	53.7	52.7	47.9	43.2
7/23/19	0:00	1:00	294947	3600	47.6	83.1	38.4	51.0	78.4	35.6	50.8	49.6	47.5	44.1
7/23/19	1:00	2:00	298547	3600	49.1	84.7	38.7	52.9	68.1	35.6	52.9	52.3	48.5	43.8
7/23/19	2:00	3:00	302147	3600	52.7	88.3	41.7	55.9	67.7	88.6	55.0	54.5	52.5	51.0
7/23/19	3:00	4:00	305747	3600	53.5	89.1	45.6	57.4	69.4	88.6	56.9	55.8	53.0	51.2
7/23/19	4:00	5:00	309347	3600	55.0	90.6	24.2	57.4	71.4	84.1	57.4	56.8	55.6	48.6
7/23/19	5:00	6:00	312947	3600	33.8	69.4	19.7	53.3	86.4	88.6	45.1	36.6	27.9	22.5
7/23/19	6:00	7:00	316547	3600	36.1	71.7	20.6	62.6	79.2	86.6	47.0	35.8	28.1	23.1
7/23/19	7:00	8:00	320147	3600	41.5	77.0	22.2	65.8	83.7	101.8	54.5	41.7	32.4	26.8
7/23/19	8:00	9:00	323747	3600	37.8	73.4	21.9	62.6	82.9	88.6	47.6	39.6	29.6	24.9
7/23/19	9:00	10:00	327347	3600	42.7	78.3	21.2	63.5	79.3	98.1	57.1	41.8	26.0	23.3
7/23/19	10:00	11:00	330947	3600	44.9	80.5	23.2	66.2	82.7	95.4	58.8	42.8	32.8	27.3
7/23/19	11:00		334547	511	37.6	64.7	23.2	54.0	79.8	86.6	47.3	40.8	32.5	25.2



O3-12
Cont.

Parrish	Start	End	Time (s)	Duration (s)	Leq (dB)	SEL (dB)	Lmin (dB)	Lmax (dB)	Peak (dB)	UWPeak (dB)	L1.00 (dB)	L10.00 (dB)	L50.00 (dB)	L90.00 (dB)
7/19/19		17:00	0	1116	42.4	72.9	28.5	61.2	86.9	101.1	54.5	45.0	36.8	32.1
7/19/19	17:00	18:00	1116	3600	37.4	73.0	28.3	49.5	73.6	102.0	44.8	40.8	35.4	31.3
7/19/19	18:00	19:00	4716	3600	34.3	69.9	24.3	48.1	69.0	100.1	42.8	37.8	31.7	27.0
7/19/19	19:00	20:00	8316	3600	34.3	69.9	20.5	52.0	71.3	94.1	46.1	36.9	28.2	22.4
7/19/19	20:00	21:00	11916	3600	28.9	64.4	20.9	50.4	84.6	85.6	38.4	32.4	25.6	22.3
7/19/19	21:00	22:00	15516	3600	30.4	66.0	22.8	46.4	59.2	35.6	41.2	33.6	25.3	24.0
7/19/19	22:00	23:00	19116	3600	29.2	64.8	22.0	44.9	56.2	35.6	41.6	30.9	24.2	23.1
7/19/19	23:00	0:00	22716	3600	30.5	66.1	21.9	45.8	58.2	35.6	42.6	32.6	23.9	23.0
7/20/19	0:00	1:00	26316	3600	26.7	62.3	21.3	41.5	54.1	35.6	35.9	29.9	23.9	22.4
7/20/19	1:00	2:00	29916	3600	24.8	60.4	21.2	38.9	54.8	35.6	34.8	25.0	23.4	22.2
7/20/19	2:00	3:00	33516	3600	25.6	61.2	21.1	40.6	58.7	35.6	37.4	24.8	22.9	21.9
7/20/19	3:00	4:00	37116	3600	22.3	57.9	21.1	27.5	50.1	35.6	24.7	23.0	22.3	21.3
7/20/19	4:00	5:00	40716	3600	22.1	57.7	20.9	30.3	53.4	35.6	24.0	22.9	22.0	21.2
7/20/19	5:00	6:00	44316	3600	25.9	61.5	20.9	47.5	65.3	35.6	35.5	28.1	22.9	21.5
7/20/19	6:00	7:00	47916	3600	32.1	67.7	21.2	50.6	65.1	35.6	44.2	33.8	23.7	22.1
7/20/19	7:00	8:00	51516	3600	33.1	68.7	21.8	48.3	64.5	35.6	44.2	37.0	26.8	23.3
7/20/19	8:00	9:00	55116	3600	33.1	68.6	22.8	47.3	58.7	90.0	44.6	37.0	26.0	24.1
7/20/19	9:00	10:00	58716	3600	34.0	69.5	24.5	49.3	82.4	102.0	43.6	37.1	30.6	27.0
7/20/19	10:00	11:00	62316	3600	34.9	70.5	25.8	53.8	69.4	97.6	43.5	38.0	32.4	28.1
7/20/19	11:00	12:00	65916	3600	36.8	72.4	25.4	53.7	78.2	100.1	47.0	40.2	32.2	28.2
7/20/19	12:00	13:00	69516	3600	38.6	74.2	24.7	54.1	84.1	100.6	49.8	41.1	33.0	26.7
7/20/19	13:00	14:00	73116	3600	36.4	72.0	24.5	52.6	83.0	101.6	46.1	40.0	32.8	27.9
7/20/19	14:00	15:00	76716	3600	35.7	71.3	25.6	50.6	80.6	101.6	44.5	39.2	32.7	28.1
7/20/19	15:00	16:00	80316	3600	35.5	71.1	24.8	49.1	70.2	102.0	44.5	39.4	31.9	27.5
7/20/19	16:00	17:00	83916	3600	36.3	71.9	26.1	52.9	73.1	103.6	46.3	40.6	31.4	28.0
7/20/19	17:00	18:00	87516	3600	34.1	69.7	25.1	54.8	75.7	95.1	43.3	37.8	30.4	26.7
7/20/19	18:00	19:00	91116	3600	31.1	66.7	23.0	46.5	65.5	92.9	40.3	34.8	27.5	24.9
7/20/19	19:00	20:00	94716	3600	32.1	67.6	21.4	49.1	68.0	85.6	41.6	36.3	26.4	23.0
7/20/19	20:00	21:00	98316	3600	31.3	66.9	21.0	44.8	66.0	35.6	38.9	34.9	29.4	24.3
7/20/19	21:00	22:00	101916	3600	32.7	68.3	24.7	50.7	73.0	35.6	41.8	36.4	28.9	26.7
7/20/19	22:00	23:00	105516	3600	33.1	68.7	23.8	48.5	61.6	85.6	43.9	36.8	27.5	25.9
7/20/19	23:00	0:00	109116	3600	36.1	71.7	22.5	53.3	65.0	85.6	48.5	39.8	25.9	24.3
7/21/19	0:00	1:00	112716	3600	32.8	68.4	21.8	56.9	70.5	35.6	46.5	31.5	25.2	23.6
7/21/19	1:00	2:00	116316	3600	25.7	61.3	21.8	41.1	55.6	35.6	34.8	26.1	24.5	23.1
7/21/19	2:00	3:00	119916	3600	26.1	61.7	21.6	45.5	57.4	35.6	33.9	25.9	24.1	22.8
7/21/19	3:00	4:00	123516	3600	23.7	59.3	20.7	34.5	47.8	35.6	30.6	25.0	22.8	22.0
7/21/19	4:00	5:00	127116	3600	22.5	58.1	20.7	37.2	71.9	35.6	24.9	23.5	22.3	21.3
7/21/19	5:00	6:00	130716	3600	29.5	65.1	20.6	46.3	62.8	35.6	42.2	31.8	24.0	21.4

O3-12
Cont.

7/21/19	6:00	7:00	134316	3600	33.8	69.4	21.3	51.2	75.6	91.6	44.9	37.9	25.4	22.8
7/21/19	7:00	8:00	137916	3600	41.1	76.7	22.7	59.4	77.6	85.6	52.9	44.6	31.5	24.8
7/21/19	8:00	9:00	141516	3600	36.2	71.8	23.5	49.1	67.6	35.6	46.5	40.4	29.7	25.3
7/21/19	9:00	10:00	145116	3600	33.1	68.7	24.0	47.4	74.9	35.6	42.4	37.1	28.4	25.3
7/21/19	10:00	11:00	148716	3600	33.5	69.1	24.3	47.9	66.1	85.6	43.5	37.1	29.0	25.6
7/21/19	11:00	12:00	152316	3600	38.4	74.0	23.5	59.0	65.8	90.0	50.6	37.4	27.6	25.2
7/21/19	12:00	13:00	155916	3600	32.4	68.0	23.2	49.6	66.8	92.9	44.7	34.3	26.7	24.6
7/21/19	13:00	14:00	159516	3600	33.9	69.5	23.0	50.6	69.2	99.5	44.7	37.8	27.5	24.5
7/21/19	14:00	15:00	163116	3600	32.8	68.4	24.6	48.3	64.4	91.6	43.1	36.1	28.7	26.3
7/21/19	15:00	16:00	166716	3600	39.5	75.1	24.0	62.3	76.6	98.3	50.5	39.4	29.8	25.4
7/21/19	16:00	17:00	170316	3600	34.7	70.2	24.6	51.0	64.9	96.8	45.3	38.4	29.3	25.9
7/21/19	17:00	18:00	173916	3600	37.6	73.2	24.4	54.8	75.4	91.6	49.9	40.0	29.7	25.9
7/21/19	18:00	19:00	177516	3600	34.1	69.7	23.3	48.2	62.8	98.9	43.9	38.8	28.2	25.2
7/21/19	19:00	20:00	181116	3600	33.4	69.0	21.6	47.9	62.9	35.6	44.7	37.0	26.2	23.2
7/21/19	20:00	21:00	184716	3600	32.1	67.7	20.7	43.8	62.9	35.6	39.8	34.0	31.6	22.9
7/21/19	21:00	22:00	188316	3600	35.0	70.6	28.7	48.6	63.1	35.6	44.7	38.1	31.6	30.1
7/21/19	22:00	23:00	191916	3600	35.3	70.9	28.7	52.2	65.8	35.6	46.0	37.7	31.5	30.1
7/21/19	23:00	0:00	195516	3600	34.4	69.9	28.2	47.4	60.8	85.6	44.0	37.1	31.3	29.8
7/22/19	0:00	1:00	199116	3600	31.1	66.7	27.3	42.6	58.6	35.6	38.8	31.9	30.1	28.8
7/22/19	1:00	2:00	202716	3600	30.4	65.9	27.3	36.6	60.2	35.6	34.4	31.5	30.1	28.8
7/22/19	2:00	3:00	206316	3600	29.4	65.0	26.0	39.3	54.0	35.6	34.2	30.8	29.0	27.5
7/22/19	3:00	4:00	209916	3600	28.0	63.6	24.2	32.1	59.8	35.6	30.7	29.5	27.8	26.2
7/22/19	4:00	5:00	213516	3600	24.5	60.0	21.0	34.7	65.2	35.6	28.7	26.4	23.9	22.0
7/22/19	5:00	6:00	217116	3600	25.8	61.4	20.7	40.4	59.8	35.6	35.2	28.5	23.0	21.2
7/22/19	6:00	7:00	220716	3600	32.7	68.3	22.0	50.1	81.4	95.1	44.1	35.5	27.2	23.6
7/22/19	7:00	8:00	224316	3600	42.1	77.7	23.1	69.9	107.0	108.9	52.8	41.1	31.3	26.0
7/22/19	8:00	9:00	227916	3600	41.5	77.1	24.4	62.1	78.0	85.6	52.3	44.5	31.5	26.5
7/22/19	9:00	10:00	231516	3600	34.3	69.9	24.3	49.7	69.6	85.6	44.5	38.3	29.5	25.9
7/22/19	10:00	11:00	235116	3600	36.5	72.0	24.4	50.9	66.0	85.6	46.9	40.0	31.6	26.4
7/22/19	11:00	12:00	238716	3600	40.8	76.3	24.4	58.5	78.2	94.1	52.3	44.5	32.5	26.5
7/22/19	12:00	13:00	242316	3600	34.9	70.5	23.3	56.5	85.5	102.5	46.0	37.9	28.4	25.0
7/22/19	13:00	14:00	245916	3600	34.0	69.6	23.1	51.7	70.9	90.0	45.1	37.6	27.8	24.6
7/22/19	14:00	15:00	249516	3600	31.7	67.3	22.7	49.2	67.2	85.6	43.0	35.3	25.4	23.7
7/22/19	15:00	16:00	253116	3600	37.1	72.6	23.3	53.7	70.3	91.6	48.6	40.8	29.7	25.1
7/22/19	16:00	17:00	256716	3600	36.3	71.8	25.8	48.8	80.9	90.0	44.8	39.3	34.2	29.8
7/22/19	17:00	18:00	260316	3600	37.6	73.2	24.6	55.4	71.9	90.0	48.3	41.3	31.8	27.3
7/22/19	18:00	19:00	263916	3600	35.2	70.8	22.7	52.2	66.0	85.6	46.7	38.7	27.6	23.9
7/22/19	19:00	20:00	267516	3600	35.1	70.7	21.4	54.7	69.2	85.6	48.0	36.2	25.7	22.6
7/22/19	20:00	21:00	271116	3600	34.1	69.7	21.1	50.4	64.6	35.6	44.5	34.9	32.5	22.5



O3-12
Cont.

7/22/19	21:00	22:00	274716	3600	34.7	70.2	29.3	46.8	60.4	35.6	43.6	35.9	32.8	30.9
7/22/19	22:00	23:00	278316	3600	34.8	70.4	27.7	48.0	64.2	35.6	45.6	37.1	30.8	29.2
7/22/19	23:00	0:00	281916	3600	32.0	67.6	28.6	45.6	60.6	35.6	41.1	32.4	31.1	30.0
7/23/19	0:00	1:00	285516	3600	32.5	68.1	28.5	41.0	63.9	35.6	36.9	34.3	32.0	30.7
7/23/19	1:00	2:00	289116	3600	31.0	66.6	27.6	42.1	66.8	35.6	34.9	32.0	30.7	29.4
7/23/19	2:00	3:00	292716	3600	30.9	66.5	28.2	37.3	52.5	35.6	34.7	31.9	30.7	29.5
7/23/19	3:00	4:00	296316	3600	29.5	65.1	25.7	38.4	55.4	35.6	33.0	30.8	29.3	27.6
7/23/19	4:00	5:00	299916	3600	29.4	64.9	24.8	40.8	54.2	35.6	34.7	31.5	28.5	26.6
7/23/19	5:00	6:00	303516	3600	41.4	76.9	24.5	56.4	89.0	95.1	53.1	46.6	29.2	26.7
7/23/19	6:00	7:00	307116	3600	31.3	66.8	23.3	51.8	72.4	85.6	40.4	34.0	28.3	25.7
7/23/19	7:00	8:00	310716	3600	33.3	68.9	23.6	46.8	79.1	35.6	42.2	37.8	29.3	25.3
7/23/19	8:00	9:00	314316	3600	31.5	67.0	24.1	50.3	66.1	85.6	42.9	33.0	27.4	25.7
7/23/19	9:00	10:00	317916	3600	38.9	74.4	23.6	60.9	77.4	91.6	52.2	38.9	29.5	25.5
7/23/19	10:00	11:00	321516	3600	34.1	69.7	23.5	52.7	78.1	92.9	44.6	37.3	29.3	25.3
7/23/19	11:00	12:00	325116	3600	35.0	70.6	23.5	54.4	72.7	88.0	46.9	38.0	29.5	24.9
7/23/19	12:00		328716	1738	42.8	75.2	23.4	55.6	81.0	90.0	53.2	48.0	32.5	26.1



O3-12
Cont.

Consolin	Start	End	Time (s)	Duration (s)	Leq (dB)	SEL (dB)	Lmin (dB)	Lmax (dB)	Peak (dB)	UWPeak (dB)	L1.00 (dB)	L10.00 (dB)	L50.00 (dB)	L90.00 (dB)
7/19/19		18:00	0	1725	40.2	72.6	32.1	58.0	87.6	102.1	48.4	42.5	38.5	34.5
7/19/19	18:00	19:00	1726	3600	38.8	74.3	31.5	53.3	71.6	102.9	44.9	41.2	37.8	34.7
7/19/19	19:00	20:00	5326	3600	33.5	69.1	23.6	59.6	81.7	92.2	42.8	35.9	29.4	25.6
7/19/19	20:00	21:00	8926	3600	29.4	65.0	23.4	43.7	65.0	83.7	39.4	31.7	26.9	24.8
7/19/19	21:00	22:00	12526	3600	28.6	64.1	23.0	44.5	62.7	35.6	38.2	30.7	26.5	24.5
7/19/19	22:00	23:00	16126	3600	27.9	63.5	22.8	41.3	62.8	35.6	34.7	30.6	26.6	24.6
7/19/19	23:00	0:00	19726	3600	27.1	62.7	21.5	39.8	57.4	35.6	36.8	29.1	24.6	22.8
7/20/19	0:00	1:00	23326	3600	30.4	66.0	21.3	52.8	70.2	35.6	43.4	30.3	23.6	22.2
7/20/19	1:00	2:00	26926	3600	24.0	59.6	21.8	34.8	54.1	35.6	31.2	25.0	23.4	22.3
7/20/19	2:00	3:00	30526	3600	24.7	60.3	21.9	35.7	60.0	35.6	30.6	26.4	23.9	22.9
7/20/19	3:00	4:00	34126	3600	26.2	61.8	21.7	46.4	65.0	35.6	36.6	26.5	23.6	22.4
7/20/19	4:00	5:00	37726	3600	23.3	58.9	21.0	32.1	55.5	35.6	26.9	24.7	22.9	21.6
7/20/19	5:00	6:00	41326	3600	25.6	61.2	20.4	44.3	67.3	35.6	33.8	28.6	23.3	21.6
7/20/19	6:00	7:00	44926	3600	30.1	65.6	20.6	48.7	61.8	35.6	40.8	33.1	24.7	21.9
7/20/19	7:00	8:00	48526	3600	30.3	65.9	20.7	51.4	71.5	86.2	40.4	33.1	26.8	22.5
7/20/19	8:00	9:00	52126	3600	32.1	67.7	22.9	43.9	63.5	94.2	39.1	35.3	30.5	26.8
7/20/19	9:00	10:00	55726	3600	34.4	69.9	26.8	47.7	62.7	99.8	41.0	37.1	32.9	30.1
7/20/19	10:00	11:00	59326	3600	33.8	69.4	26.7	43.9	59.8	96.4	40.7	36.6	32.4	29.5
7/20/19	11:00	12:00	62926	3600	34.9	70.5	26.0	44.1	62.1	102.1	42.0	38.0	33.4	29.5
7/20/19	12:00	13:00	66526	3600	34.9	70.5	24.8	45.7	62.7	97.1	41.9	38.2	33.1	28.4
7/20/19	13:00	14:00	70126	3600	35.8	71.4	24.4	49.7	62.9	95.0	43.8	39.5	33.4	28.0
7/20/19	14:00	15:00	73726	3600	36.4	71.9	25.1	52.8	72.8	94.2	44.8	39.7	34.0	29.3
7/20/19	15:00	16:00	77326	3600	34.5	70.1	24.1	52.1	75.9	97.1	42.4	37.4	32.6	27.9
7/20/19	16:00	17:00	80926	3600	36.3	71.9	24.2	52.1	77.7	95.8	45.6	39.3	33.3	29.2
7/20/19	17:00	18:00	84526	3600	33.8	69.3	24.2	52.8	67.6	95.0	42.8	36.2	30.7	27.1
7/20/19	18:00	19:00	88126	3600	32.7	68.2	24.8	54.5	67.7	91.1	42.4	33.7	29.6	26.9
7/20/19	19:00	20:00	91726	3600	31.5	67.1	23.4	48.2	64.6	83.7	42.3	33.5	28.3	25.8
7/20/19	20:00	21:00	95326	3600	32.6	68.2	25.8	58.8	73.3	89.7	41.1	33.9	29.7	27.5
7/20/19	21:00	22:00	98926	3600	30.9	66.4	24.9	44.0	65.7	35.6	37.8	33.7	29.5	27.1
7/20/19	22:00	23:00	102526	3600	36.2	71.8	21.6	60.0	76.9	82.1	47.2	33.2	27.7	24.1
7/20/19	23:00	0:00	106126	3600	27.9	63.5	20.6	46.6	71.7	35.6	35.0	30.0	26.7	23.5
7/21/19	0:00	1:00	109726	3600	30.0	65.6	22.1	46.7	64.3	35.6	40.9	30.9	27.8	25.1
7/21/19	1:00	2:00	113326	3600	26.1	61.6	19.5	52.2	66.0	35.6	30.0	27.4	24.7	22.5
7/21/19	2:00	3:00	116926	3600	30.3	65.9	19.2	60.5	75.0	35.6	33.6	24.9	22.5	20.6
7/21/19	3:00	4:00	120526	3600	30.2	65.8	19.9	58.4	73.3	35.6	30.4	24.5	22.1	20.7
7/21/19	4:00	5:00	124126	3600	22.4	58.0	18.8	43.1	74.6	35.6	28.9	23.5	21.3	19.6
7/21/19	5:00	6:00	127726	3600	30.1	65.7	18.6	58.7	71.3	35.6	39.2	30.6	23.0	19.9
7/21/19	6:00	7:00	131326	3600	32.9	68.5	21.1	51.8	67.3	35.6	43.1	35.9	28.0	23.4

O3-12
Cont.

7/21/19	7:00	8:00	134926	3600	36.2	71.7	22.6	61.5	75.6	35.6	45.3	36.6	29.5	24.9
7/21/19	8:00	9:00	138526	3600	31.6	67.2	24.0	42.7	61.4	35.6	40.1	35.1	28.9	26.2
7/21/19	9:00	10:00	142126	3600	31.5	67.1	23.9	57.0	70.4	35.6	39.0	33.4	28.5	26.2
7/21/19	10:00	11:00	145726	3600	31.3	66.8	23.7	49.8	74.2	88.2	42.5	33.4	27.5	25.1
7/21/19	11:00	12:00	149326	3600	30.3	65.9	21.9	45.2	74.9	91.1	39.9	33.2	27.0	24.1
7/21/19	12:00	13:00	152926	3600	31.4	66.9	22.0	46.8	63.1	93.3	38.2	34.4	29.8	25.1
7/21/19	13:00	14:00	156526	3600	46.0	81.6	26.8	69.0	84.5	93.3	60.7	38.7	33.0	29.8
7/21/19	14:00	15:00	160126	3600	36.4	72.0	24.1	58.5	72.1	97.7	45.0	38.7	33.8	29.0
7/21/19	15:00	16:00	163726	3600	40.6	76.2	22.6	65.4	82.9	96.4	49.4	37.9	32.0	27.5
7/21/19	16:00	17:00	167326	3600	48.0	83.6	25.5	74.1	89.5	97.7	57.1	39.1	32.8	29.0
7/21/19	17:00	18:00	170926	3600	34.3	69.9	23.9	52.0	71.0	89.7	42.5	37.1	32.2	27.6
7/21/19	18:00	19:00	174526	3600	33.3	68.9	23.9	48.6	63.6	88.2	40.5	37.0	30.8	26.1
7/21/19	19:00	20:00	178126	3600	28.8	64.4	22.6	48.1	74.6	95.8	37.6	30.6	26.5	24.4
7/21/19	20:00	21:00	181726	3600	29.5	65.1	21.5	51.7	67.1	35.6	38.9	31.5	25.8	23.5
7/21/19	21:00	22:00	185326	3600	29.7	65.3	21.2	49.7	66.2	35.6	38.7	32.8	26.0	23.6
7/21/19	22:00	23:00	188926	3600	32.0	67.6	20.4	57.8	72.6	35.6	43.4	32.8	24.8	22.1
7/21/19	23:00	0:00	192526	3600	29.9	65.5	21.0	45.2	62.7	35.6	41.1	33.6	24.5	22.3
7/22/19	0:00	1:00	196126	3600	25.2	60.8	19.1	39.7	56.7	35.6	35.3	26.6	23.8	20.3
7/22/19	1:00	2:00	199726	3600	23.3	58.9	19.2	40.1	67.9	35.6	30.8	25.0	21.8	20.3
7/22/19	2:00	3:00	203326	3600	23.8	59.3	19.5	43.6	68.1	35.6	29.8	25.0	22.8	21.0
7/22/19	3:00	4:00	206926	3600	28.7	64.3	19.5	59.2	73.0	35.6	33.0	27.6	24.5	21.4
7/22/19	4:00	5:00	210526	3600	26.3	61.9	19.8	51.8	73.4	35.6	32.8	27.3	24.1	21.4
7/22/19	5:00	6:00	214126	3600	26.6	62.2	20.5	41.9	59.6	35.6	34.3	29.5	24.6	22.4
7/22/19	6:00	7:00	217726	3600	28.9	64.5	21.3	50.6	72.6	35.6	36.7	31.9	26.3	23.4
7/22/19	7:00	8:00	221326	3600	32.9	68.5	23.8	57.0	72.9	35.6	40.9	35.5	29.6	26.5
7/22/19	8:00	9:00	224926	3600	36.6	72.1	25.5	57.8	69.6	83.7	46.5	35.8	30.7	28.0
7/22/19	9:00	10:00	228526	3600	31.9	67.5	25.0	48.1	73.1	86.2	42.1	33.4	29.8	27.6
7/22/19	10:00	11:00	232126	3600	44.2	79.8	24.0	69.2	88.4	92.2	49.7	35.7	28.4	26.1
7/22/19	11:00	12:00	235726	3600	43.6	79.2	22.5	68.3	82.1	94.2	48.9	37.4	29.4	25.0
7/22/19	12:00	13:00	239326	3600	31.9	67.4	22.9	50.7	75.2	91.1	40.8	33.8	29.7	26.2
7/22/19	13:00	14:00	242926	3600	44.3	79.9	22.9	69.2	80.0	91.1	54.8	34.6	27.3	24.9
7/22/19	14:00	15:00	246526	3600	42.5	78.1	23.2	64.1	78.1	88.2	56.3	35.8	30.4	26.7
7/22/19	15:00	16:00	250126	3600	37.3	72.9	26.4	49.3	78.3	95.0	43.1	40.3	36.1	31.7
7/22/19	16:00	17:00	253726	3600	44.3	79.8	25.9	69.4	87.2	93.3	54.9	42.9	37.4	31.5
7/22/19	17:00	18:00	257326	3600	33.6	69.1	23.0	47.1	72.3	86.2	41.6	36.3	31.9	27.4
7/22/19	18:00	19:00	260926	3600	45.5	81.1	27.8	65.7	77.9	88.2	60.7	43.1	35.9	31.2
7/22/19	19:00	20:00	264526	3600	36.3	71.9	20.9	50.4	62.3	35.6	46.5	40.1	30.2	23.1
7/22/19	20:00	21:00	268126	3600	29.2	64.8	21.3	42.4	58.2	35.6	38.8	30.6	27.6	23.8
7/22/19	21:00	22:00	271726	3600	28.5	64.1	22.0	42.3	62.5	35.6	38.2	30.9	26.0	24.2

O3-12
Cont.

7/22/19	22:00	23:00	275326	3600	29.2	64.7	20.5	43.2	55.7	35.6	39.5	31.7	26.3	22.2
7/22/19	23:00	0:00	278926	3600	26.6	62.1	20.7	38.6	58.7	35.6	35.0	28.0	25.3	23.4
7/23/19	0:00	1:00	282526	3600	26.1	61.7	20.5	54.5	67.2	35.6	31.8	27.8	23.9	21.4
7/23/19	1:00	2:00	286126	3600	25.7	61.3	19.8	38.6	59.9	35.6	32.1	28.1	24.7	21.4
7/23/19	2:00	3:00	289726	3600	26.2	61.8	19.9	44.8	68.8	35.6	30.9	28.7	25.0	22.0
7/23/19	3:00	4:00	293326	3600	25.3	60.9	21.2	33.6	54.3	35.6	30.6	27.1	24.7	23.2
7/23/19	4:00	5:00	296926	3600	25.7	61.3	22.9	38.7	54.3	86.2	33.7	26.9	24.6	23.5
7/23/19	5:00	6:00	300526	3600	40.8	76.4	24.6	55.8	85.0	95.8	53.5	43.1	29.1	26.2
7/23/19	6:00	7:00	304126	3600	31.3	66.8	25.8	43.5	68.7	87.3	36.7	33.6	30.4	27.7
7/23/19	7:00	8:00	307726	3600	51.6	87.2	26.9	82.3	107.3	114.1	59.4	44.9	33.8	30.2
7/23/19	8:00	9:00	311326	3600	40.6	76.2	28.3	63.8	83.2	86.2	54.9	40.3	33.0	30.4
7/23/19	9:00	10:00	314926	3600	36.8	72.4	28.7	63.0	78.5	101.8	46.8	37.5	32.3	30.2
7/23/19	10:00	11:00	318526	3600	32.7	68.3	25.8	46.4	66.3	88.2	41.9	34.7	30.8	28.3
7/23/19	11:00		322126	2047	32.2	65.3	25.3	46.4	75.1	89.7	39.8	35.1	30.2	27.6



O3-12
Cont.