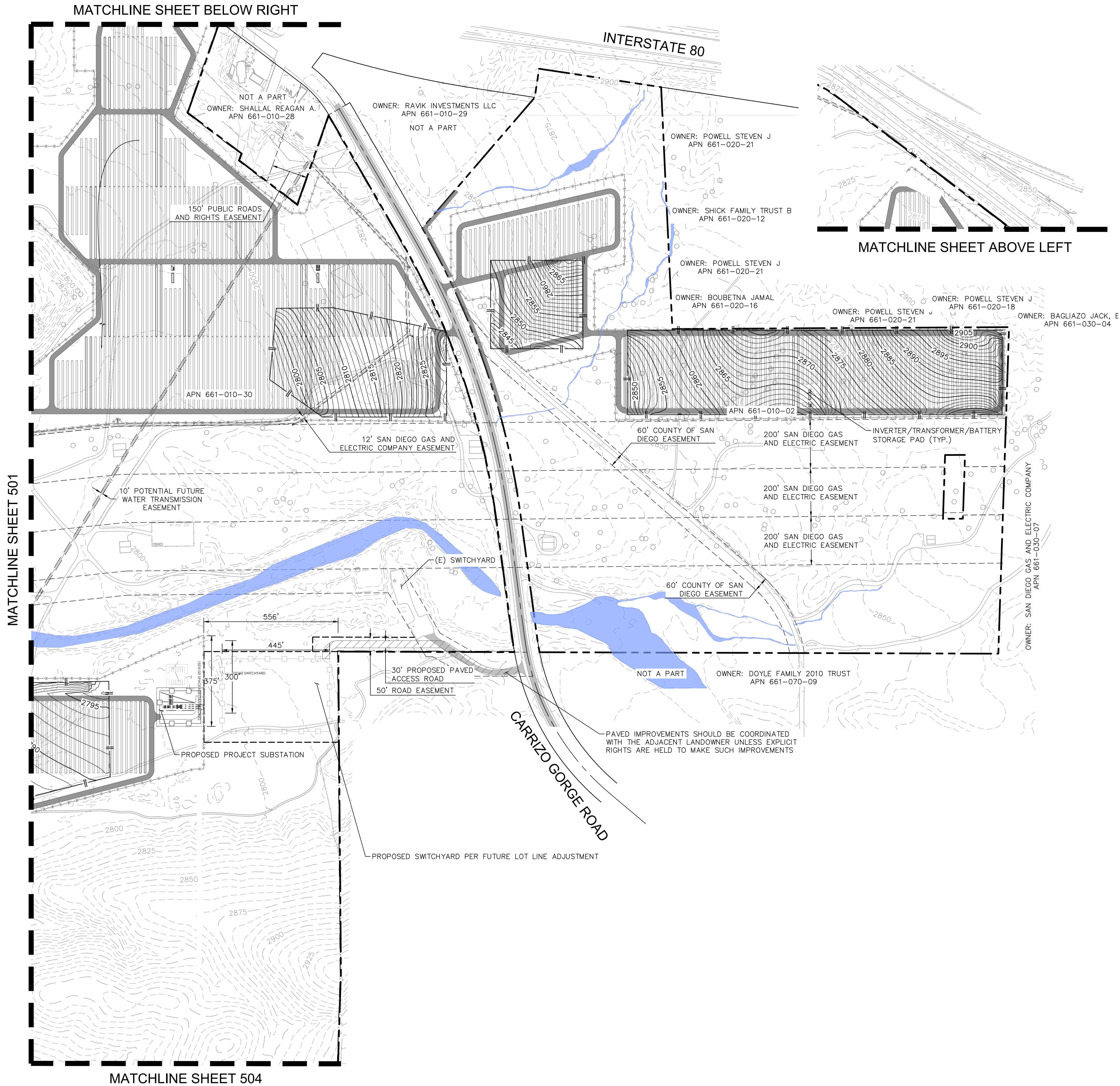


SHEET SIZE: ARCH D - 24" x 36"









**LEGEND**

PROPERTY LINE  
CENTER LINE  
SETBACK LINE  
EASEMENT LINE  
EXISTING WATER LINE  
EXISTING OVERHEAD ELECTRIC  
PROPOSED SITE PERIMETER FENCE  
PROPOSED SUBSTATION FENCE  
PROPOSED LIMIT OF MASS GRADING

PROPOSED LANDSCAPE BUFFER

PROPOSED ALL WEATHER ACCESS ROAD

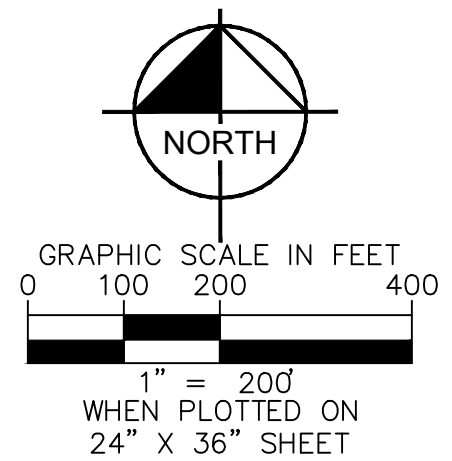
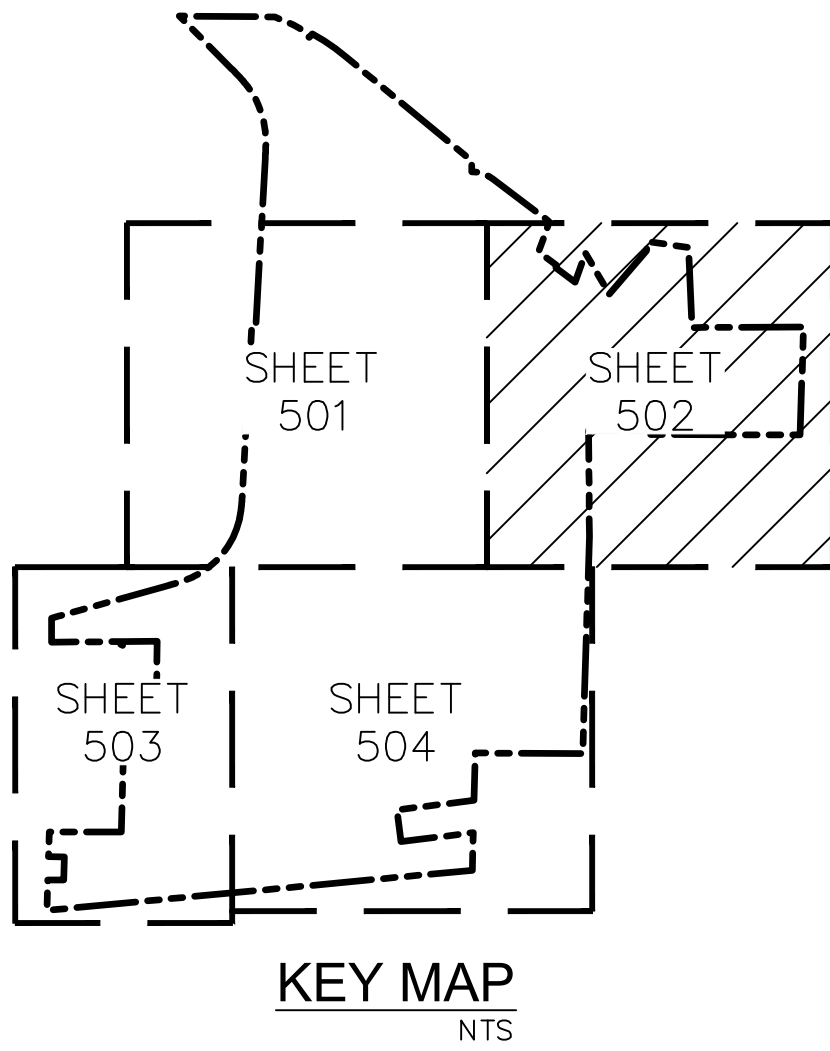
PROPOSED PAVED ACCESS ROAD. PAVED  
IMPROVEMENTS SHOULD BE COORDINATED WITH  
THE ADJACENT LANDOWNER UNLESS EXPLICIT  
RIGHTS ARE HELD TO MAKE SUCH  
IMPROVEMENTS.

STATE JURISDICTIONAL BIOLOGICAL RESOURCES  
NON-VEGETATED CHANNEL

ARMY CORPS JURISDICTIONAL BIOLOGICAL RESOURCES  
DESERT SINK SCRUB

MESQUITE BOSQUE

- NOTES**
1. SURVEY INFORMATION PREPARED BY KIMLEY-HORN AND ASSOCIATES DATED AUGUST 2018; PENDING ALTA COMPLETION.
  2. SETBACKS
    - 2.1. 60' "ROOSEVELT" PUBLIC RESERVE SETBACK PER "COUNTY OF SAN DIEGO, CALIFORNIA BOARD OF SUPERVISORS POLICY NUMBER I-111"
    - 2.2. 90' COUNTY SETBACK PER "COUNTY OF SAN DIEGO, CALIFORNIA BOARD OF SUPERVISORS POLICY NUMBER I-111"
    - 2.3. FRONT, REAR, AND SIDE BUILDING COUNTY SETBACKS PER SAN DIEGO COUNTY "SETBACKS FOR SOLAR PHOTOVOLTAIC PANELS" DATED 01/30/18. REQUIRES A MINIMUM 3' SETBACK FROM PROPERTY LINE TO GROUND-MOUNTED PV SOLAR ARRAYS.
  3. BIOLOGICAL RESOURCE DELINEATION PROVIDED BY DUDEK ENVIRONMENTAL ON AUGUST 30TH 2018.
  4. 15'-WIDE PROPOSED LANDSCAPE BUFFER, REFER TO CONCEPTUAL LANDSCAPE PLANS, SHEETS XX.
  5. RUNWAY SAFETY ZONES DELINEATED PER AVIATION COMPATIBILITY PLAN. SEE SHEET 300.
  6. ELECTRICAL LAYOUT SHOWN AS PROVIDED BY BAYWA R.E. SOLAR PROJECTS, LLC DATED OCTOBER 09, 2018.



**BayWa r.e.  
Solar Projects LLC**

17901 Von Karman Ave, Suite 1050  
Irvine, CA 92614  
Phone: 949.398.3915 | Fax: 949.398.3914  
www.baywa-re.us

**Kimley»Horn**

© 2018 KIMLEY-HORN AND ASSOCIATES, INC.  
765 THE CITY DRIVE, SUITE 200, ORANGE, CA 92668  
PHONE: 714-939-1030 FAX: 714-938-9488  
WWW.KIMLEY-HORN.COM

**SITE INFORMATION**  
JVR ENERGY PARK

**PROJECT MANAGER**  
PATRICK BROWN  
949.398.3915

**PROJECT ENGINEER**  
DREW CORRAO  
310.936.5067

NO. ISSUE DATE  
MUP - FIRST SUBMITAL 11/1/2018

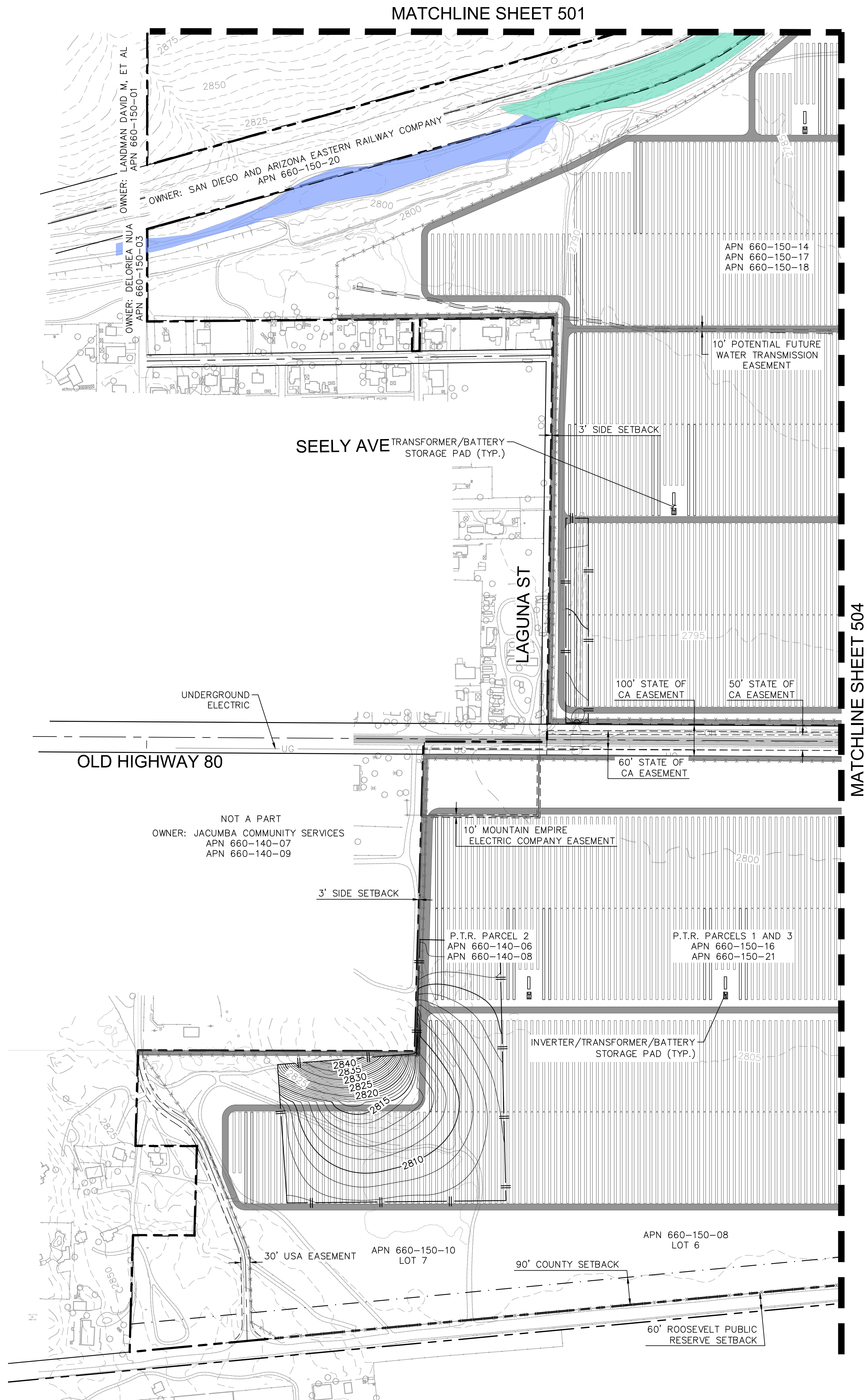
PROJECT NUMBER KHA-194083001  
DRAWN BY CK  
REVIEWED BY WC  
APPROVED BY DB

CLIENT SIGNATURE

**PRELIMINARY GRADING  
PLAN  
ENLARGED  
GRADING PLAN**

DRAWING  
NUMBER **502**  
SHEET SIZE: ARCH D - 24" x 36"

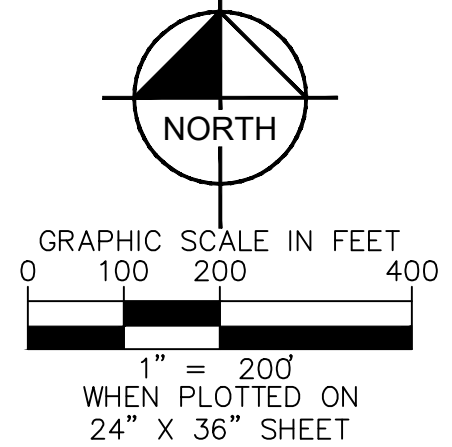
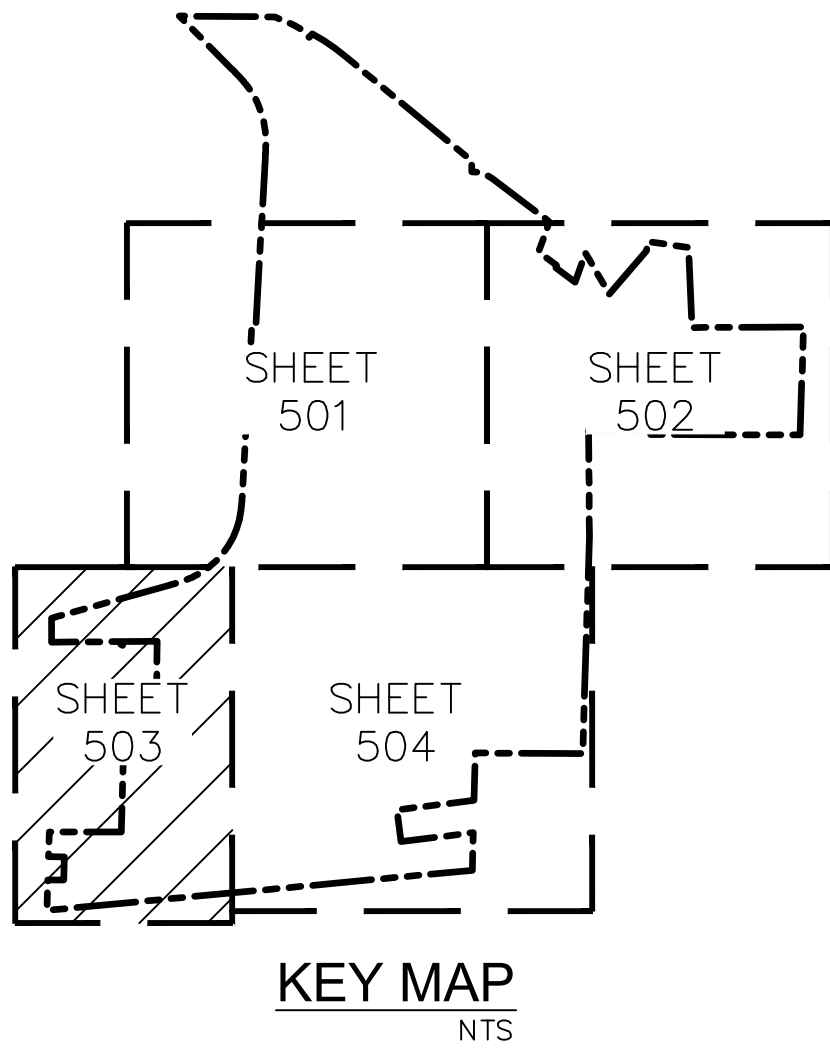




**LEGEND**

- PROPERTY LINE
- CENTER LINE
- SETBACK LINE
- EASEMENT LINE
- EXISTING WATER LINE
- EXISTING OVERHEAD ELECTRIC
- PROPOSED SITE PERIMETER FENCE
- PROPOSED SUBSTATION FENCE
- PROPOSED LIMIT OF MASS GRADING
- PROPOSED LANDSCAPE BUFFER
- PROPOSED ALL WEATHER ACCESS ROAD
- PROPOSED PAVED ACCESS ROAD. PAVED IMPROVEMENTS SHOULD BE COORDINATED WITH THE ADJACENT LANDOWNER UNLESS EXPLICIT RIGHTS ARE HELD TO MAKE SUCH IMPROVEMENTS.
- STATE JURISDICTIONAL BIOLOGICAL RESOURCES
  - NON-VEGETATED CHANNEL
- ARMY CORPS JURISDICTIONAL BIOLOGICAL RESOURCES
  - DESERT SINK SCRUB
  - MESQUITE BOSQUE

- NOTES**
- SURVEY INFORMATION PREPARED BY KIMLEY-HORN AND ASSOCIATES DATED AUGUST 2018; PENDING ALTA COMPLETION.
  - SETBACKS
    - 60' "ROOSEVELT" PUBLIC RESERVE SETBACK PER "COUNTY OF SAN DIEGO, CALIFORNIA BOARD OF SUPERVISORS POLICY NUMBER I-111"
    - 90' COUNTY SETBACK PER "COUNTY OF SAN DIEGO, CALIFORNIA BOARD OF SUPERVISORS POLICY NUMBER I-111"
    - FRONT, REAR, AND SIDE BUILDING COUNTY SETBACKS PER SAN DIEGO COUNTY "SETBACKS FOR SOLAR PHOTOVOLTAIC PANELS" DATED 01/30/18. REQUIRES A MINIMUM 3' SETBACK FROM PROPERTY LINE TO GROUND-MOUNTED PV SOLAR ARRAYS.
  - BIOLOGICAL RESOURCE DELINEATION PROVIDED BY DUDEK ENVIRONMENTAL ON AUGUST 30TH 2018.
  - 15'-WIDE PROPOSED LANDSCAPE BUFFER, REFER TO CONCEPTUAL LANDSCAPE PLANS, SHEETS XX.
  - RUNWAY SAFETY ZONES DELINEATED PER AVIATION COMPATIBILITY PLAN. SEE SHEET 300.
  - ELECTRICAL LAYOUT SHOWN AS PROVIDED BY BAYWA R.E. SOLAR PROJECTS, LLC DATED OCTOBER 09, 2018.



**BayWa r.e.  
Solar Projects LLC**

17901 Von Karman Ave, Suite 1050  
Irvine, CA 92614  
Phone: 949.398.3915 | Fax: 949.398.3914  
www.baywa-re.us

**Kimley»Horn**

© 2018 KIMLEY-HORN AND ASSOCIATES, INC.  
765 THE CITY DRIVE, SUITE 200, ORANGE, CA 92668  
PHONE: 714-939-1030 FAX: 714-938-9488  
WWW.KIMLEY-HORN.COM

**SITE INFORMATION**  
JVR ENERGY PARK

**PROJECT MANAGER**  
PATRICK BROWN  
949.398.3915

**PROJECT ENGINEER**  
DREW CORRAO  
310.936.5067

NO.	ISSUE	DATE
	MUP - FIRST SUBMITTAL	11/1/2018

**PROJECT NUMBER** KHA-194083001  
**DRAWN BY** CK  
**REVIEWED BY** WC  
**APPROVED BY** DB

**CLIENT SIGNATURE**

**PRELIMINARY GRADING  
PLAN  
ENLARGED  
GRADING PLAN**

**DRAWING  
NUMBER** 503  
**SHEET SIZE:** ARCH D - 24" x 36"



