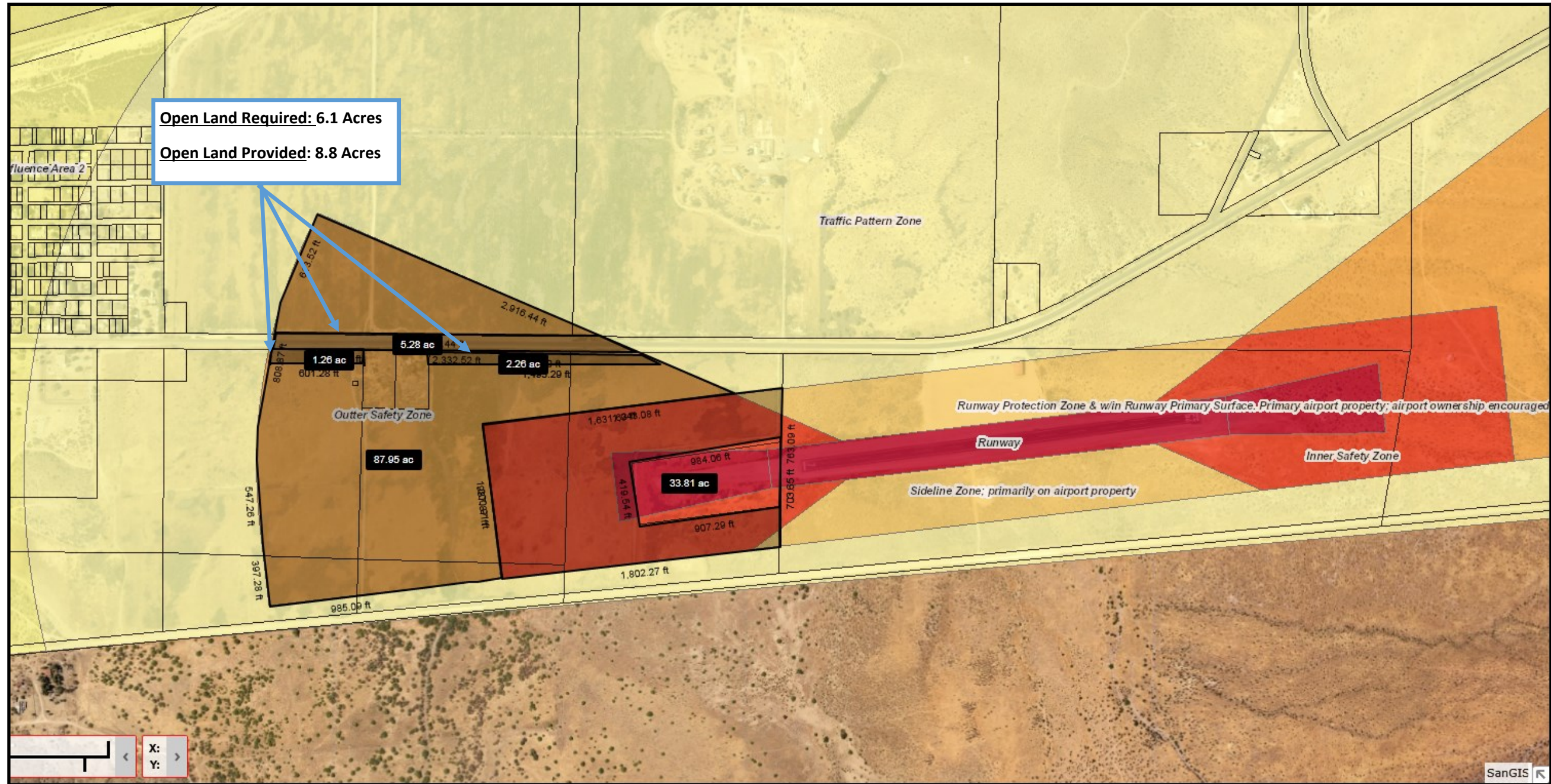


Attachment A



Safety Zone Area Impacted by Project

Safety Zone 2: 33.81 Acres

Safety Zone 4: 87.95 Acres

Open Land Required Calculation

Safety Zone 2: $x = (34 \text{ acres} / 10 \text{ acres}) \times 0.5 \text{ acres} = 1.7 \text{ Acres}$

Safety Zone 4: $x = (87.95 \text{ acres} / 10 \text{ acres}) \times 0.5 \text{ acres} = 4.4 \text{ Acres}$

Total: 6.1 Acres

Open Land Provided Calculation

Old Highway 80 in Safety Zone 4 = 5.28 Acres

Area with no development proposed with no slope = 3.52 Acres

Total: 8.8 Acres