

*70% Lot Coverage*

*50% Lot Coverage*

**LEGEND**

- PROPERTY LINE
- CENTER LINE
- - - EASEMENT LINE
- X-X-X-X- PROPOSED FENCE
- ▬ ALL WEATHER ACCESS ROAD

**NOTES**

1. SURVEY INFORMATION PREPARED BY KIMLEY-HORN AND ASSOCIATES DATED AUGUST 2018; PENDING ALTA COMPLETION.
2. SETBACKS
  - 2.1. 60' ROOSEVELT PUBLIC RESERVE SETBACK PER COUNTY OF SAN DIEGO, CALIFORNIA BOARD OF SUPERVISORS POLICY NUMBER 1-111'
  - 2.2. 90' COUNTY SETBACK PER COUNTY OF SAN DIEGO, CALIFORNIA BOARD OF SUPERVISORS POLICY NUMBER 1-111'
  - 2.3. 50' FROM REAR AND SIDE BUILDING COUNTY SETBACKS PER SAN DIEGO COUNTY "SETBACKS FOR SOLAR PHOTOVOLTAIC PANELS" DATED 01/30/18. REQUIRES A MINIMUM 3' SETBACK FROM PROPERTY LINE TO GROUND-MOUNTED PV SOLAR ARRAYS
3. RUNWAY SAFETY ZONES DELINEATED PER JACUMBA AIRPORT LAND USE COMPATIBILITY PLAN (ALUCP) ADOPTED BY THE SAN DIEGO COUNTY AIRPORT LAND USE COMMISSION (ALUC) IN DECEMBER 2008 AND SHOWN IN RED ON THE PLAN. NOTED BELOW.
  - 3.1. KIMLEY-HORN DEPICTION PER SAFETY ZONE DIMENSIONAL PLAN PROVIDED BY BAYWA AND ALUC. ALSO INCLUDES KIMLEY-HORN 7/18/18 PHOTOVOLTAIC PANELS SETBACKS PER SAN DIEGO COUNTY "SETBACKS FOR SOLAR PHOTOVOLTAIC PANELS" DATED 01/30/18. APPROACH ZONE, ETC AS SHOWN IN GREEN.
  - 3.2. KIMLEY-HORN DEPICTION PER SAFETY ZONE DIMENSIONAL PLAN PROVIDED BY BAYWA AND ALUC. ALSO INCLUDES KIMLEY-HORN 7/18/18 PHOTOVOLTAIC PANELS SETBACKS PER SAN DIEGO COUNTY "SETBACKS FOR SOLAR PHOTOVOLTAIC PANELS" DATED 01/30/18. APPROACH ZONE, ETC AS SHOWN IN GREEN.
4. ELECTRICAL LAYOUT SHOWN AS PROVIDED BY BAYWA R.E. SOLAR PROJECTS, LLC DATED OCTOBER 09, 2018.
5. RUNWAY COORDINATES PER SD COUNTY - EMAIL DATED 10/4/2018 FROM ERIC NELSON

**ALUCP CLEAR SPACE CALCULATIONS**

THIS LAYOUT COMPLES WITH \$2.9 OF THE ALUCP (CLEAR SPACE) AS CALCULATED BELOW.

DEVELOPED AREA (OVERALL SITE):

AREA: 891E AC

COVERED SPACE: 171A AC

PERCENT CLEAR SPACE: 7.5 AC PER 10 AC PORTION

AREAS TO BE EXCLUDED FROM CLEAR SPACE CALCULATIONS:

ARRAY FIELD (INSIDE OF PERIMETER PERMETER ROAD):

COVERED SPACE: 1693E AC

CLEAR SPACE: 3693E AC

PERCENT CLEAR SPACE: 6.8 AC PER 10 AC PORTION

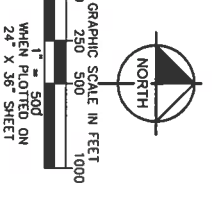
**SAFETY ZONES**

SAFETY ZONE	PROP. LAND USE CATEGORY	MAX. LOT COVERAGE	EST. LOT COVERAGE
1		0%	25-45%
2	INDUSTRIAL OUTDOOR STORAGE	50%	25-45%
4		70%	25-45%
5		70%	25-45%

Ⓢ PER ALUCP MAP JAC-2

Ⓣ PER ALUCP § 2 B

Ⓤ PENDING FINAL DESIGN



**BayWa r.e. Solar Projects LLC**

17201 Van Korman Ave, Suite 1000  
 Irvine, CA 92614  
 Phone: 949.388.3915 | Fax: 949.388.3914  
 www.baywa-r.e.us



©2018 KIMLEY-HORN AND ASSOCIATES, INC.  
 765 THE CITY DRIVE, SUITE 200, GRANITE, CA 92648  
 PHONE: 714.939.1000 FAX: 714.933.8488  
 WWW.KIMLEY-HORN.COM

**PROJECT INFORMATION**

PROJECT MANAGER: GEORGE CHINNOE 832.933.2477

PROJECT ENGINEER: ANDREW J. BISHOP 949.717.2973

SITE INFORMATION: JVR ENERGY PARK

NO.	ISSUE	DATE
1	MRP - FIRST SUBMITTAL (1/13/2019)	

PROJECT CLIENT: KHA-1134083301

DRAWN BY: LC

REVIEWED BY: WC

APPROVED BY: DB

CLIENT SIGNATURE: \_\_\_\_\_

MAJOR USE PERMIT AVIATION COMPATIBILITY PLAN

DRAWING NUMBER: 300

SHEET SIZE: ARCH D - 24" X 36"