

70% Lot Coverage

50% Lot Coverage

LEGEND

- PROPERTY LINE
- CENTER LINE
- - - EASEMENT LINE
- X-X-X-X- PROPOSED FENCE
- ALL WEATHER ACCESS ROAD

NOTES

1. SURVEY INFORMATION PREPARED BY KIMLEY-HORN AND ASSOCIATES DATED AUGUST 2018; PENDING ALTA COMPLETION.
2. SETBACKS
 - 2.1. 60' ROOSEVELT PUBLIC RESERVE SETBACK PER COUNTY OF SAN DIEGO, CALIFORNIA BOARD OF SUPERVISORS POLICY NUMBER 1-111'
 - 2.2. 90' COUNTY SETBACK PER COUNTY OF SAN DIEGO, CALIFORNIA BOARD OF SUPERVISORS POLICY NUMBER 1-111'
 - 2.3. 60' FROM REAR AND SIDE BUILDING COUNTY SETBACKS PER SAN DIEGO COUNTY "SETBACKS FOR SOLAR PHOTOVOLTAIC PANELS" DATED 01/30/18. REQUIRES A MINIMUM 3' SETBACK FROM PROPERTY LINE TO GROUND-MOUNTED PV SOLAR ARRAYS
3. RUNWAY SAFETY ZONES DELINEATED PER JACUMBA AIRPORT LAND USE COMPATIBILITY PLAN (ALUCP) ADOPTED BY THE SAN DIEGO COUNTY AIRPORT LAND USE COMMISSION (ALUC) IN DECEMBER 2008 AND SHOWN AS SHAPED AREAS ON THE PLAN NOTED BELOW
 - 3.1. KIMLEY-HORN DEPICTION PER SAFETY ZONE DIMENSIONAL PLAN DATED 01/30/18. ALSO INCLUDES KIMLEY-HORN 7' CLEAR SPACE PER SAFETY ZONE DIMENSIONAL PLAN, APPROXIMATELY 10' CLEAR SPACE PER SAFETY ZONE, ETC AS SHOWN IN GREEN.
 - 3.2. PROVIDED BY BAYWA AND ALUC. ALSO INCLUDES KIMLEY-HORN 7' CLEAR SPACE PER SAFETY ZONE DIMENSIONAL PLAN, APPROXIMATELY 10' CLEAR SPACE PER SAFETY ZONE, ETC AS SHOWN IN GREEN.
4. ELECTRICAL LAYOUT SHOWN AS PROVIDED BY BAYWA R.E. SOLAR PROJECTS, LLC DATED OCTOBER 09, 2018.
5. RUNWAY COORDINATES PER SD COUNTY - EMAIL DATED 10/4/2018 FROM ERIC NELSON

ALUCP CLEAR SPACE CALCULATIONS

THIS LAYOUT COMPLES WITH \$2.9 OF THE ALUCP (CLEAR SPACE) AS CALCULATED BELOW.

DEVELOPED AREA (OVERALL SITE):

AREA: 891E AC

COVERED SPACE: 171A AC

PERCENT CLEAR SPACE: 7.5 AC PER 10 AC PORTION

AREAS TO BE EXCLUDED FROM CLEAR SPACE CALCULATIONS:

ARWAY FEED (INSIDE OF PERIMETER PERMETER ROAD):

COVERED SPACE: 1693 AC

CLEAR SPACE: 3693 AC

PERCENT CLEAR SPACE: 6.8 AC PER 10 AC PORTION

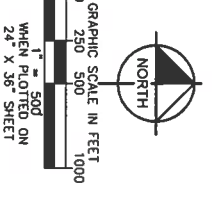
SAFETY ZONES

SAFETY ZONE	PROP. LAND USE CATEGORY	MAX. LOT COVERAGE	EST. LOT COVERAGE
1		0%	25-45%
2	INDUSTRIAL OUTDOOR STORAGE	50%	25-45%
4		70%	25-45%
5		70%	25-45%

Ⓞ PER ALUCP MAP JAC-2

Ⓢ PER ALUCP § 2 B

Ⓣ PENDING FINAL DESIGN



BayWa r.e. Solar Projects LLC

17201 Van Korman Ave, Suite 1000
 Irvine, CA 92614
 Phone: 949.388.3915 | Fax: 949.388.3914
 www.baywa-r.e.us



©2018 KIMLEY-HORN AND ASSOCIATES, INC.
 765 THE CITY DRIVE, SUITE 200, GRANITE, CA 92648
 PHONE: 714.939.1000 FAX: 714.933.8488
 WWW.KIMLEY-HORN.COM

PROJECT INFORMATION

PROJECT MANAGER: GEORGE CHINNOE 832.903.2477

PROJECT ENGINEER: ANDREW J. BISHOP 949.717.2973

SITE INFORMATION: JVR ENERGY PARK

NO.	ISSUE	DATE
1	MRP - FIRST SUBMITTAL (1/13/2019)	

PROJECT NUMBER: RHA-17-0633001

DRAWN BY: LL

REVIEWED BY: WC

APPROVED BY: DB

CLIENT SIGNATURE: _____

MAJOR USE PERMIT AVIATION COMPATIBILITY PLAN

DRAWING NUMBER: 300

SHEET SIZE: ARCH D - 24" X 36"