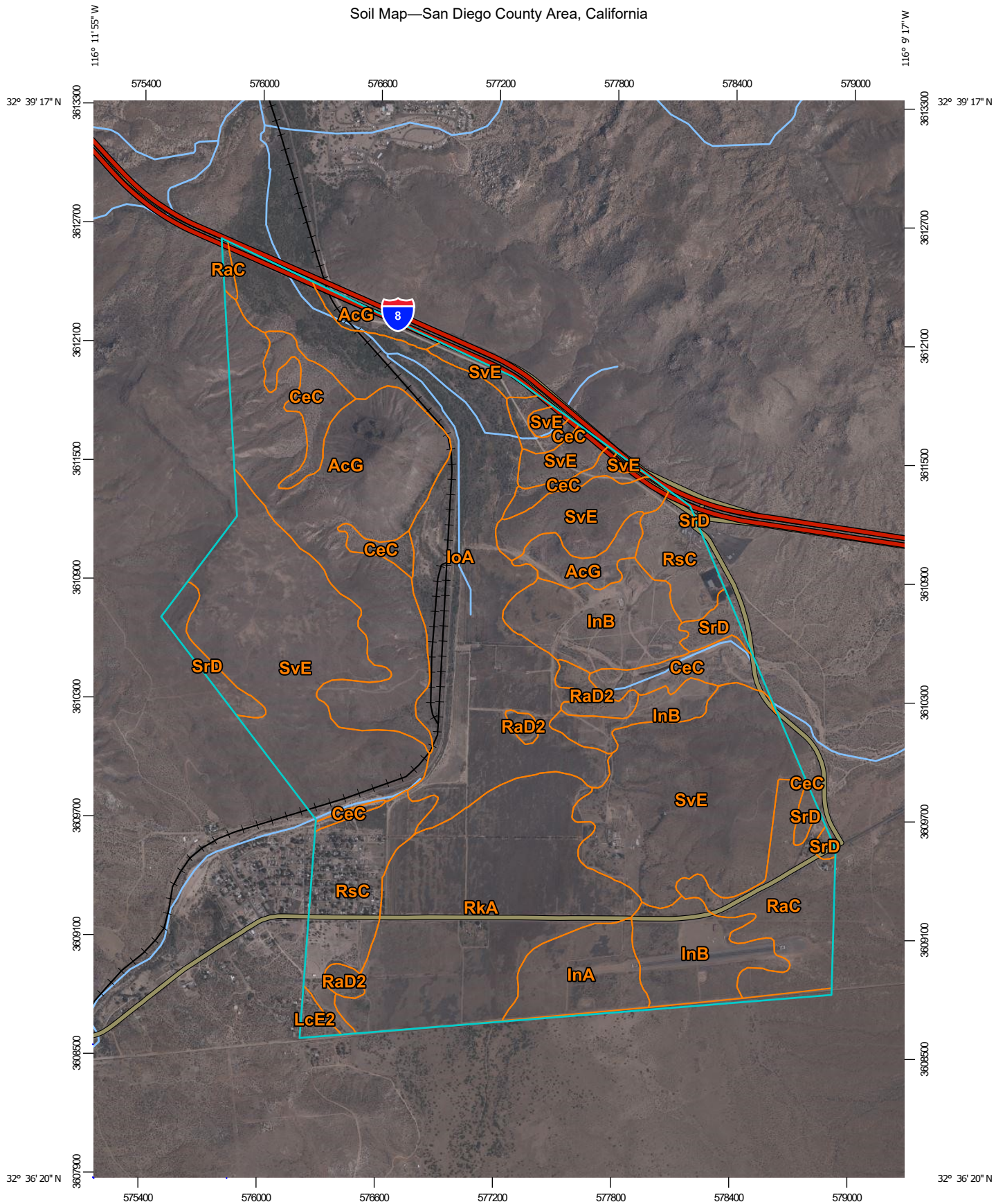
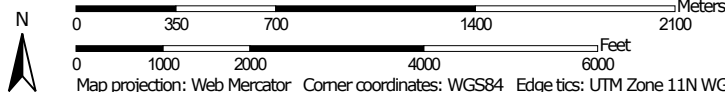


Soil Map—San Diego County Area, California



Map Scale: 1:26,500 if printed on A portrait (8.5" x 11") sheet.



Map projection: Web Mercator Corner coordinates: WGS84 Edge tics: UTM Zone 11N WGS84



Natural Resources
Conservation Service

Web Soil Survey
National Cooperative Soil Survey

10/13/2020
Page 1 of 3

MAP LEGEND

Area of Interest (AOI)

 Area of Interest (AOI)

Soils

 Soil Map Unit Polygons

 Soil Map Unit Lines

 Soil Map Unit Points

Special Point Features



Blowout



Borrow Pit



Clay Spot



Closed Depression



Gravel Pit



Gravelly Spot



Landfill



Lava Flow



Marsh or swamp



Mine or Quarry



Miscellaneous Water



Perennial Water



Rock Outcrop



Saline Spot



Sandy Spot



Severely Eroded Spot



Sinkhole



Slide or Slip



Sodic Spot



Spoil Area



Stony Spot



Very Stony Spot



Wet Spot



Other



Special Line Features

Water Features



Streams and Canals

Transportation



Rails



Interstate Highways



US Routes



Major Roads



Local Roads

Background



Aerial Photography

MAP INFORMATION

The soil surveys that comprise your AOI were mapped at 1:24,000.

Please rely on the bar scale on each map sheet for map measurements.

Source of Map: Natural Resources Conservation Service

Web Soil Survey URL:

Coordinate System: Web Mercator (EPSG:3857)

Maps from the Web Soil Survey are based on the Web Mercator projection, which preserves direction and shape but distorts distance and area. A projection that preserves area, such as the Albers equal-area conic projection, should be used if more accurate calculations of distance or area are required.

This product is generated from the USDA-NRCS certified data as of the version date(s) listed below.

Soil Survey Area: San Diego County Area, California

Survey Area Data: Version 15, May 27, 2020

Soil map units are labeled (as space allows) for map scales 1:50,000 or larger.

Date(s) aerial images were photographed: Aug 18, 2018—Aug 22, 2018

The orthophoto or other base map on which the soil lines were compiled and digitized probably differs from the background imagery displayed on these maps. As a result, some minor shifting of map unit boundaries may be evident.

Map Unit Legend

Map Unit Symbol	Map Unit Name	Acres in AOI	Percent of AOI
AcG	Acid igneous rock land	307.6	14.4%
CeC	Carrizo very gravelly sand, 0 to 9 percent slopes	105.5	4.9%
InA	Indio silt loam, 0 to 2 percent slopes	63.1	2.9%
InB	Indio silt loam, 2 to 5 percent slopes	183.7	8.6%
IoA	Indio silt loam, saline, 0 to 2 percent slopes	363.4	17.0%
LcE2	La Posta rocky loamy coarse sand, 5 to 30 percent slopes, eroded	6.9	0.3%
RaC	Ramona sandy loam, 5 to 9 percent slopes	95.8	4.5%
RaD2	Ramona sandy loam, 9 to 15 percent slopes, eroded	26.0	1.2%
RkA	Reiff fine sandy loam, 0 to 2 percent slopes	279.5	13.0%
RsC	Rositas loamy coarse sand, 2 to 9 percent slopes	128.8	6.0%
SrD	Sloping gullied land	39.2	1.8%
SvE	Stony land	536.4	25.0%
Totals for Area of Interest		2,142.3	100.0%