

Trey Driscoll

From: Allan, Rand B <Rand.Allan@sdcounty.ca.gov>
Sent: Friday, September 13, 2013 12:49 PM
To: Trey Driscoll
Subject: RE: Precipitation Data Jacumba
Attachments: Sutherland Reservoir Monthly Rain.xlsx; Santa Ysabel Monthly Rain.xlsx; Witch Creek Monthly Rain.xlsx; Mt Woodson Monthly Rain.xlsx; Ramona Monthly Rain.xlsx; Rancho Bernardo NWS Monthly Rain.xlsx; Jacumba Monthly Rain.xlsx

Trey,

Attached is the monthly totals for Jacumba. In your email you also mentioned the San Dieguito Watershed, so I also did the rain stations within that watershed. Let me know if you have any other questions.

Rand Allan

Associate Meteorologist
County of San Diego Flood Control
5510 Overland Ave, Suite 410
San Diego, CA 92123
(858) 495-5557
Rand.Allan@sdcounty.ca.gov

From: Trey Driscoll [mailto:tdriscoll@dudek.com]
Sent: Friday, September 13, 2013 11:22 AM
To: Allan, Rand B
Subject: RE: Precipitation Data Jacumba

Rand,

Any chance I can get the requested Jacumba historical precipitation data today. I am attempting to complete a soil moisture balance analysis to evaluate recharge in the Boundary Creek watershed this week-end.

Cheers,
Trey

TREY DRISCOLL, PG #8511, CHG #936
SENIOR HYDROGEOLOGIST

DUDEK

ENGINEERING + ENVIRONMENTAL
605 THIRD STREET
ENCINITAS, CALIFORNIA 92024
T 760.479.4154 F 760.942.5206 C 760.415.1425

WWW.DUDEK.COM

PLEASE NOTE: Dudek & Associates uses an email filter to clean viruses and filter Spam. Please take the time to verify receipt of any important or time-sensitive email sent to us.

From: Allan, Rand B [<mailto:Rand.Allan@sdcounty.ca.gov>]
Sent: Thursday, August 29, 2013 4:16 PM
To: Trey Driscoll
Subject: RE: Precipitation Data Jacumba

Trey,

We do have several historical rain stations within the Lake Hodges watershed and I do have data for Jacumba. However, I was not able to get to your data request before I leave on my vacation tomorrow. I will get on your request after I return on September 11.

Rand Allan

Associate Meteorologist
County of San Diego Flood Control
5510 Overland Ave, Suite 410
San Diego, CA 92123
(858) 495-5557
Rand.Allan@sdcounty.ca.gov

From: Trey Driscoll [<mailto:tdriscoll@dudek.com>]
Sent: Wednesday, August 28, 2013 3:27 PM
To: Allan, Rand B
Subject: RE: Precipitation Data Jacumba

Rand,

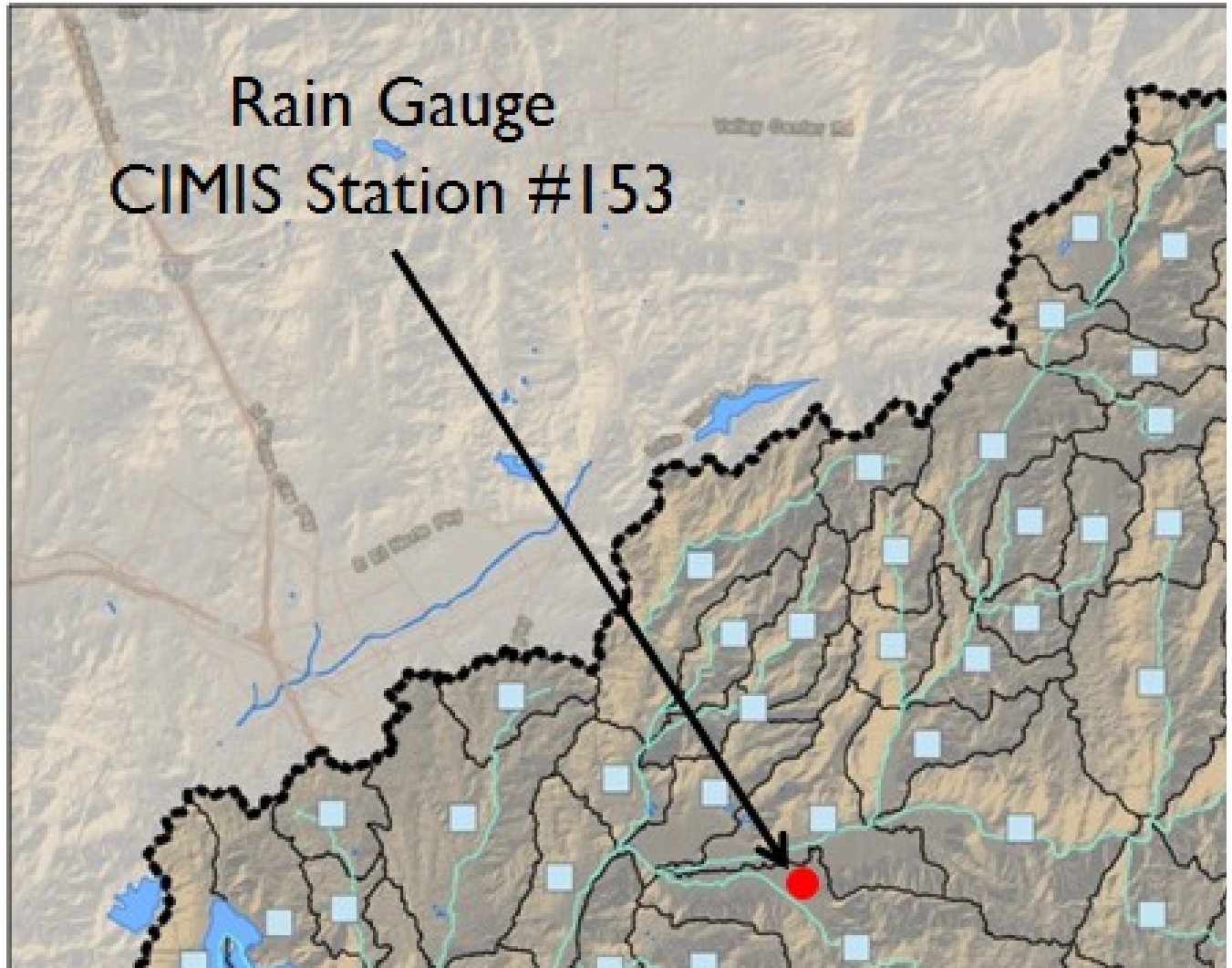
Any luck on tracking down data for Jacumba rain gauge? Also I am working on an EPA Stormwater Water Management Model (SWMM) for the Lake Hodges Watershed.

Currently we are using precipitation data from CIMIS Station #153 (see location on figure). Does the County have historical rain gauge data for any location within the Lake Hodges Watershed?

Cheers,
Trey

LAKE HODGES NATURAL T

SWMM DI



From: Allan, Rand B [<mailto:Rand.Allan@sdcounty.ca.gov>]
Sent: Monday, August 19, 2013 7:18 AM
To: Trey Driscoll
Subject: RE: Precipitation Data Jacumba

We stopped collecting rainfall data about 5 years ago, but I can give you the monthly totals from 1981 to the end of our record. Will that be OK?

Rand Allan

Associate Meteorologist
County of San Diego Flood Control
5510 Overland Ave, Suite 410
San Diego, CA 92123
(858) 495-5557
Rand.Allan@sdcounty.ca.gov

From: Trey Driscoll [<mailto:tdriscoll@dudek.com>]

Sent: Sunday, August 18, 2013 8:23 PM

To: Allan, Rand B

Subject: Precipitation Data Jacumba

Rand,

A Master's Thesis by Swenson, 1981 presents County of San Diego Monthly Precipitation Records for Jacumba, California.

Has the County continued to record precipitation from a rain gauge located in Jacumba? If so will you please provide me the monthly data and the location of the rain gauge.

Cheers,
Trey

Jacumba Monthly Precipitation Records (County of San Diego, 1980, personal commun

Water Year	July	Aug.	Sept.	Oct.	Nov.	Dec.	Jan.	Feb.	March	April	May	June	Total
1962-1963									1.18	0.60	0	0	
1963-1964	0	0	1.02	2.46	0.33	0.20	1.06	0.70	1.68	0.15	0.35	0	7.95
1964-1965	0	0	0	0.36	0.88	0.55	0.21	1.21	0.05	2.38	0	0	5.64
1965-1966	0.35	0.31	0.08	0	3.82	4.03	2.00	1.38	0.74	0	0	0	12.71
1966-1967	0.46	0.25	0	1.45	0.42	3.68	0.87	0	0.43	2.13	0.04	0	9.73
1967-1968	0.25	0.33	1.50	0	2.38	3.83	0.07	0.28	0.81	0.75	T	0	10.20
1968-1969	1.71	0.12	0	0.11	0.29	0.91	2.43	2.18	0.77	0.11	0.40	0	9.03
1969-1970	1.77	0.02	0.29	0	1.38	0.19	0.27	1.81	2.93	0.48	0	0.03	9.17
1970-1971	0.08	1.43	0.04	0.32	0.82	2.14	0.71	0.75	0.26	0.69	0.07	0	7.31
1971-1972	0.10	1.32	0.14	0.56	0.02	1.68	0	0.03	0	0.09	0.05	0.47	4.46
1972-1973	0.01	0	0.01	1.78	1.40	1.38	1.03	2.35	2.56	0.10	0	0	10.62
1973-1974	0	0.74	0	0	0.81	0.04	3.00	0.06	0.41	0.13	0.06	0	5.25
1974-1975	1.46	0	0.67	0.92	0.17	0.73	0.29	0.61	2.22	0.98	0	0	8.05
1975-1976	0.41	0.02	0.17	0.06	1.88	0.30	0.05	3.15	1.32	0.93	0.18	0	8.47

Source: Swenson, G. A., 1981. Master's Thesis San Diego State University – The Groundwater Hydrology of Jacumba Valley, California and Baja California.

TREY DRISCOLL, PG #8511, CHG #936
SENIOR HYDROGEOLOGIST

DUDEK

ENGINEERING + ENVIRONMENTAL
605 THIRD STREET
ENCINITAS, CALIFORNIA 92024
T 760.479.4154 F 760.942.5206 C 760.415.1425

WWW.DUDEK.COM

PLEASE NOTE: Dudek & Associates uses an email filter to clean viruses and filter Spam. Please take the time to verify receipt of any important or time-sensitive email sent to us.