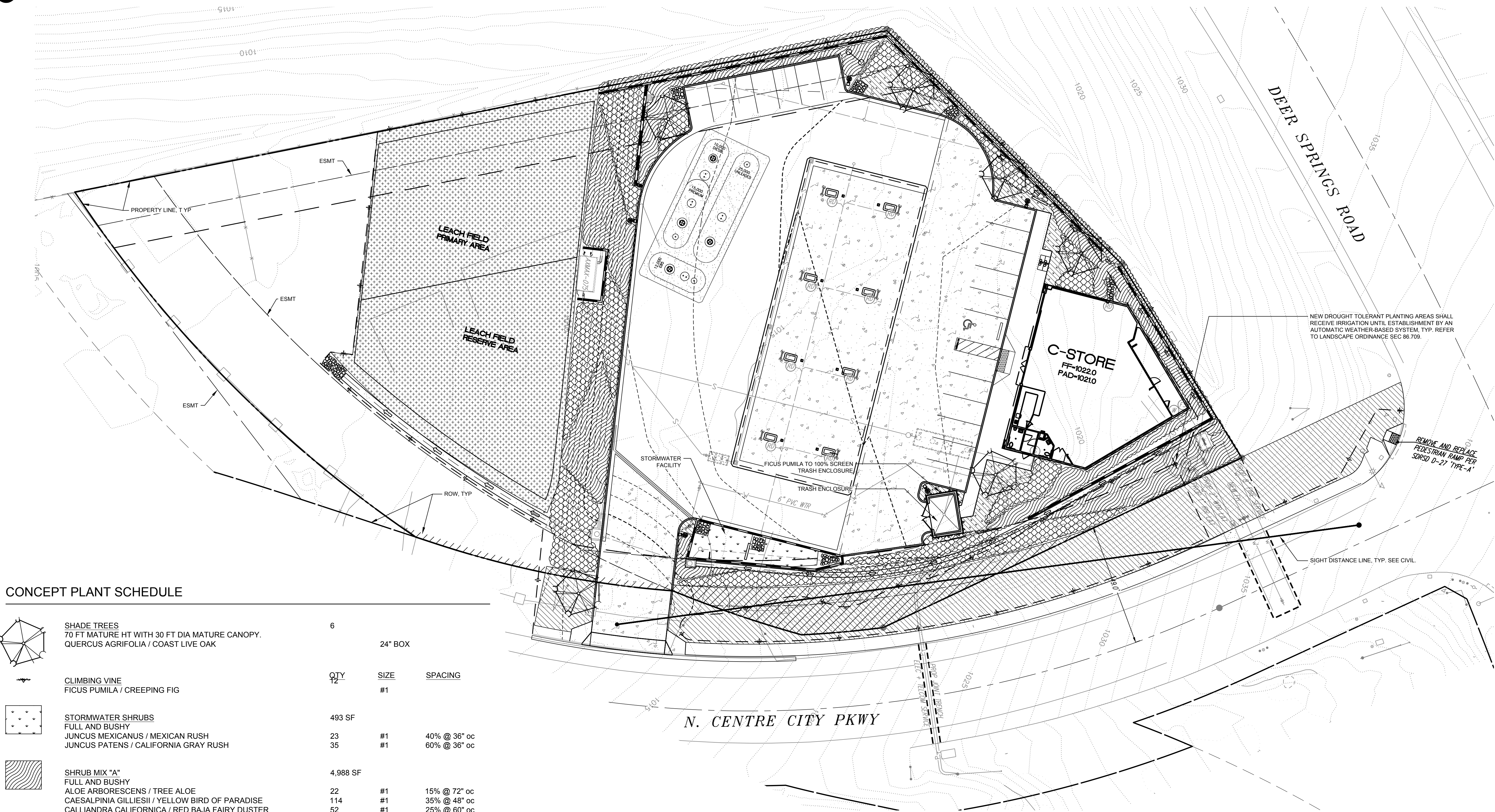




Know what's below.
Call before you dig.
Dial 811

PRELIMINARY LANDSCAPE AND IRRIGATION PLAN

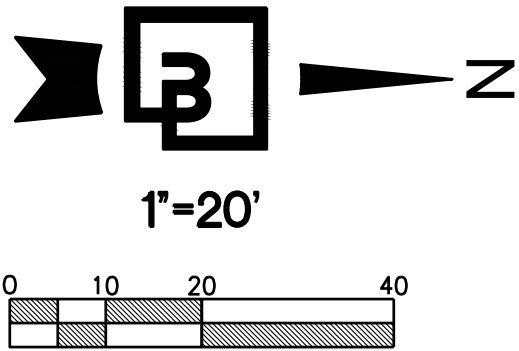


CONCEPT PLANT SCHEDULE

	SHADE TREES 70 FT MATURE HT WITH 30 FT DIA MATURE CANOPY. QUERCUS AGRIFOLIA / COAST LIVE OAK	6		24" BOX
	CLIMBING VINE FICUS PUMILA / CREEPING FIG	QTY 12	SIZE #1	SPACING
	STORMWATER SHRUBS FULL AND BUSHY JUNCUS MEXICANUS / MEXICAN RUSH JUNCUS PATENS / CALIFORNIA GRAY RUSH	493 SF		
	SHRUB MIX "A" FULL AND BUSHY ALOE ARBORESCENS / TREE ALOE CAESALPINIA GILLIESII / YELLOW BIRD OF PARADISE CALLIANDRA CALIFORNICA / RED BAJA FAIRY DUSTER FOUQUIERIA SPLENDENS / OCOTILLO	4,988 SF		
	SHRUB MIX "B" FULL AND BUSHY AGAVE SHAWII / COASTAL AGAVE GALVEZIA JUNCEA / BAJA SNAPDRAGON SALVIA X 'BEE'S BLISS' / SAGE ZAUSCHNERIA CALIFORNICA / CALIFORNIA FUCHSIA	4,178 SF		
	GROUND COVER HOLD BACK 18 INCHES FROM BORDERS, TREES, AND SHRUBS. ACACIA REDOLENS / BANK CATCLAW APTEA CORDIFOLIA 'RED APPLE' / BABY SUNROSE DUDLEYA BRITTONII / DUDLEYA	978 SF		
	S&S SEED: NATIVE EROSION CONTROL MIX SEE SHEET L2 FOR HYDROSEED SPEC BROMUS CARINATUS 'CUCAMONGA' / CALIFORNIA BROME-GRASS FESTUCA MICROSTACHYS / SAMLL FESCUE TRIFOLIUM CILIOLATUM / FOOTHILL CLOVER	7,557 SF		
	S&S SEED: CHAPARRAL SAGE SCRUB MIX SEE SHEET L2 FOR HYDROSEED SPEC	4,761 SF 1,889 SF 907 SF	SEED SEED SEED	63% 25% 12%

NOTES

- WUCOLS ZONE 4
- ALL STORMWATER PLANT SPECIES HAVE BEEN SELECTED FROM COUNTY OF SAN DIEGO'S PLANT LIST FOR BIORETENTION FACILITIES.
- OWNER WILL HIRE A LANDSCAPE CONTRACTOR TO CONDUCT ON-GOING MAINTENANCE ACTIVITIES FOR THE SITE AND ADJACENT ROW.
- REQ FOR LANDSCAPING ARE BASED ON THE COUNTY OF SAN DIEGO'S WATER CONSERVATION IN LANDSCAPING ORDINANCE, THE WATER EFFICIENT LANDSCAPE DESIGN MANUAL, AND THE COUNTY OF SAN DIEGO PARKING DESIGN MANUAL.



Revision		COUNTY COMMENTS	
No.	Date	By	Appr.
2	10/17/19	JLB	JMW
1	10/31/17	HMD	PB

Title:
PRELIMINARY LANDSCAPE AND IRRIGATION PLAN
KA ENTERPRISES MEGA MART
Deer Springs Rd / Mountain Meadows
Escondido, CA

5820 Oberlin Dr Suite 201
San Diego, CA 92121
Contact: Eugene Marini
858/404-6091
fax 858/404-6081



For:



Scale:
Horizontal 1"=20'-0"
Vertical 1"=20'-0"

Designed	JMW
Drawn	JLB
Checked	JMW
Approved	JMW
Date	10/17/19

18215 72ND AVENUE SOUTH
KENT, WA 98032
(425)251-6222
(425)251-8782 FAX
CIVIL ENGINEERING, LAND PLANNING,
SURVEYING, ENVIRONMENTAL SERVICES



Job Number
18442
Sheet
L1 of 2

