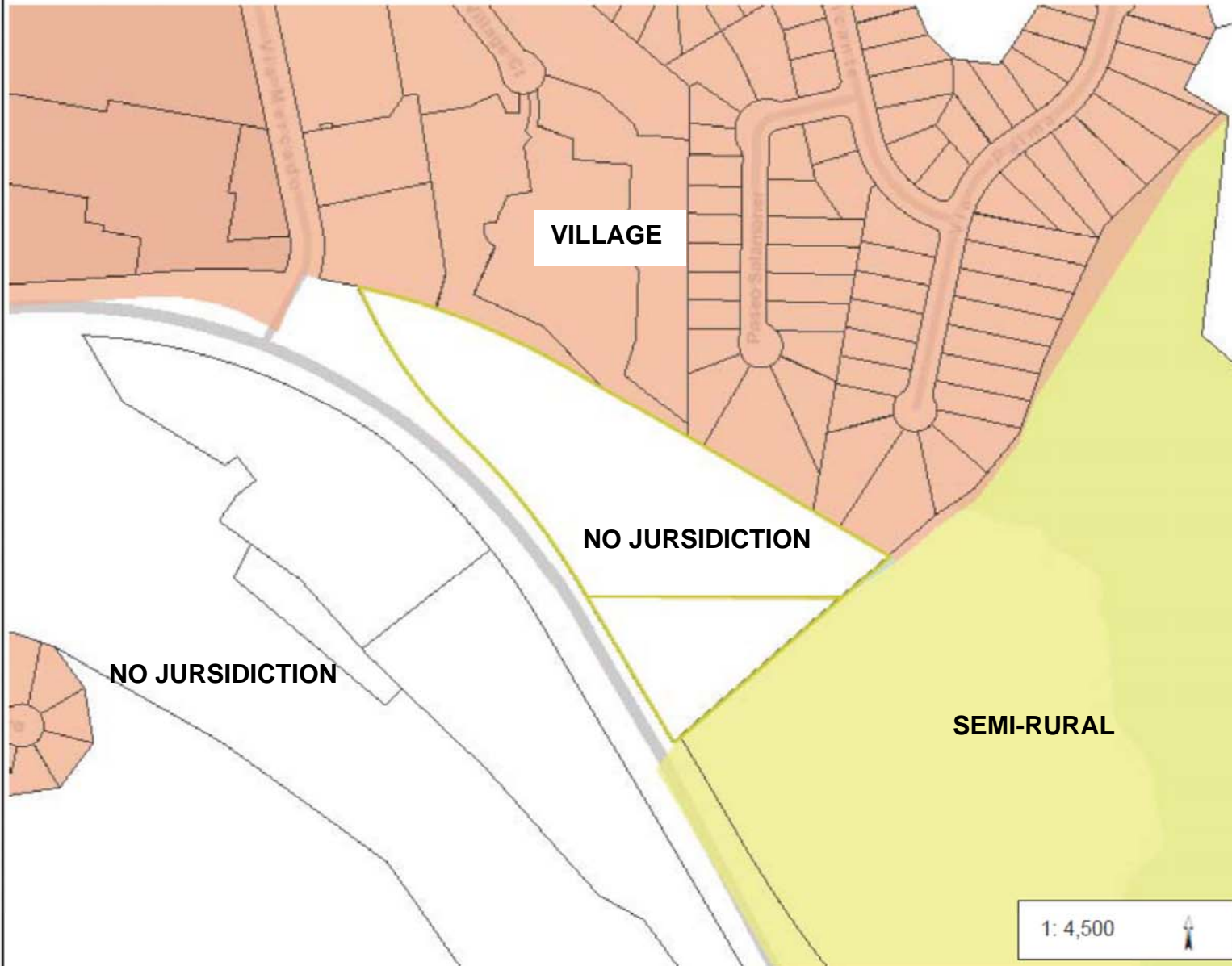


Skyline Retirement Center Existing GP Regional Category



Legend

- ☐ Parcels
- Regional Categories**
 - Village
 - Semi-Rural
 - Rural
 - No Jurisdiction



0.1 0 0.07 0.1 Miles

WGS_1984_Web_Mercator_Auxiliary_Sphere
Department of Housing and Community Development

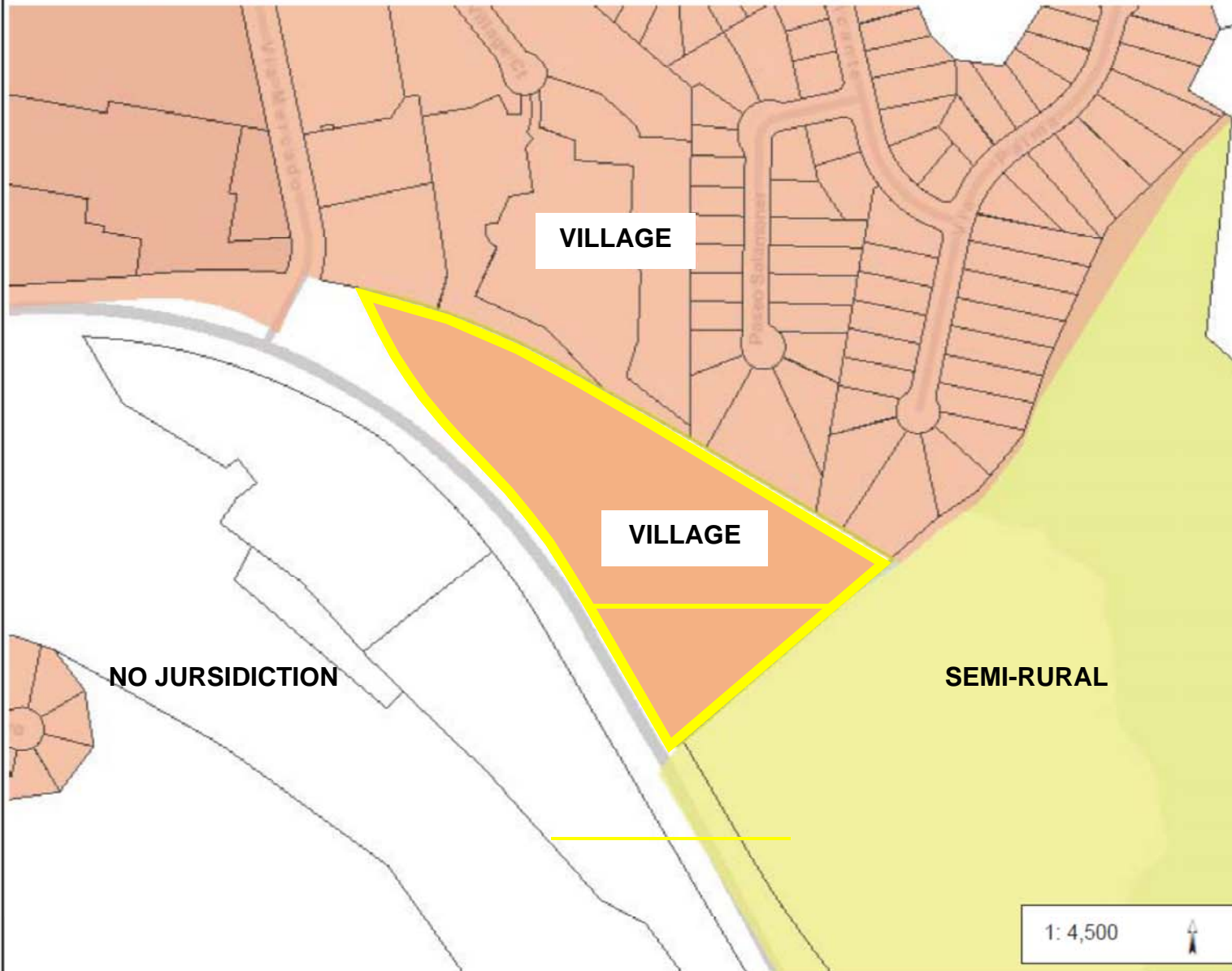
This map is a user generated static output from an Internet mapping site and is for reference only. Data layers that appear on this map may or may not be accurate, current, or otherwise reliable.

THIS MAP IS NOT TO BE USED FOR NAVIGATION

Notes

EXISTING GENERAL PLAN
REGIONAL CATEGORY

Skyline Retirement Center Proposed GP Regional Category



Legend

- ☐ Parcels
- Regional Categories**
 - Village
 - Semi-Rural
 - Rural
 - No Jurisdiction

Notes

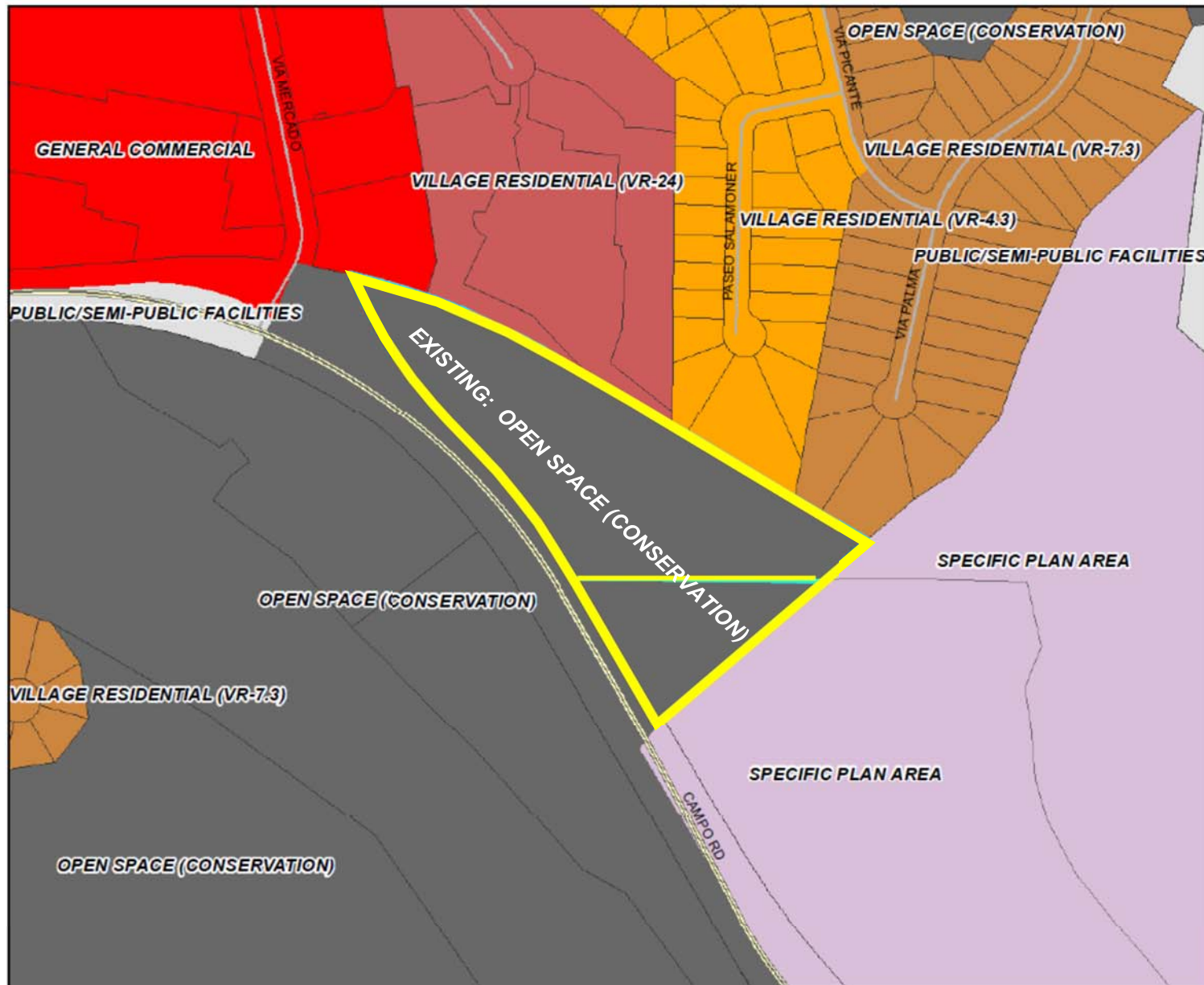
PROPOSED GENERAL PLAN
REGIONAL CATEGORY

0.1 0 0.07 0.1 Miles

WGS_1984_Web_Mercator_Auxiliary_Sphere
Department of Housing and Community Development

This map is a user generated static output from an Internet mapping site and is for reference only. Data layers that appear on this map may or may not be accurate, current, or otherwise reliable.
THIS MAP IS NOT TO BE USED FOR NAVIGATION

Skyline Retirement Center EXISTING GENERAL PLAN LAND USE



Legend:

- PROJECT AREA
- GENERAL PLAN (AUGUST 2011)**
- Village Residential (VR-30)
- Village Residential (VR-24)
- Village Residential (VR-20)
- Village Residential (VR-15)
- Village Residential (VR-10.9)
- Village Residential (VR-7.3)
- Village Residential (VR-4.3)
- Village Residential (VR-2.9)
- Village Residential (VR-2)
- Semi-Rural Residential (SR-.5)
- Semi-Rural Residential (SR-1)
- Semi-Rural Residential (SR-2)
- Semi-Rural Residential (SR-4)
- Semi-Rural Residential (SR-10)
- Rural Lands (RL-20)
- Rural Lands (RL-40)
- Rural Lands (RL-80)
- Specific Plan Area*
- Office Professional
- Neighborhood Commercial
- General Commercial
- Rural Commercial
- Limited Impact Industrial
- Medium Impact Industrial
- High Impact Industrial
- Village Core Mixed Use
- Public/Semi-Public Facilities
- Public/Semi-Public Lands (Solid Waste Facility)
- Public Agency Lands
- Tribal Lands
- Open Space (Recreation)
- Open Space (Conservation)

0 0.04 0.08 0.12 0.16 Miles

NAD 1983 StatePlane California VI FIPS 0406 Feet
Planning and Development Services

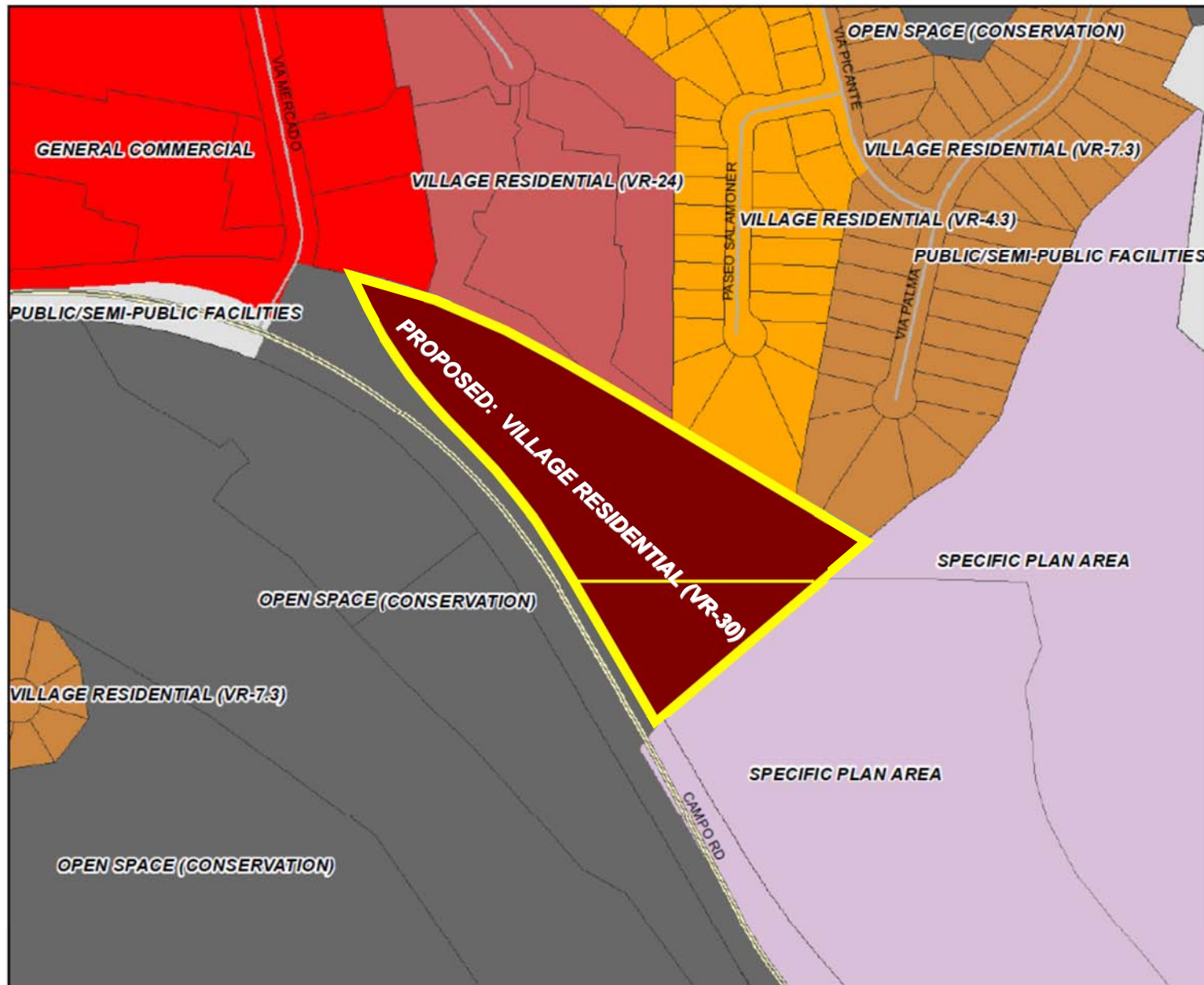


This map is generated automatically from an internet mapping site and is for reference only.
Data layers that appear on this map may or may not be accurate, current, or otherwise reliable.
THIS MAP IS NOT TO BE USED FOR NAVIGATION.

Notes:

*Residential densities in italics

Skyline Retirement Center PROPOSED GENERAL PLAN LAND USE



Legend:

- PROJECT AREA
- GENERAL PLAN (AUGUST 2011)**
- Village Residential (VR-30)
- Village Residential (VR-24)
- Village Residential (VR-20)
- Village Residential (VR-15)
- Village Residential (VR-10.9)
- Village Residential (VR-7.3)
- Village Residential (VR-4.3)
- Village Residential (VR-2.9)
- Village Residential (VR-2)
- Semi-Rural Residential (SR-.5)
- Semi-Rural Residential (SR-1)
- Semi-Rural Residential (SR-2)
- Semi-Rural Residential (SR-4)
- Semi-Rural Residential (SR-10)
- Rural Lands (RL-20)
- Rural Lands (RL-40)
- Rural Lands (RL-80)
- Specific Plan Area*
- Office Professional
- Neighborhood Commercial
- General Commercial
- Rural Commercial
- Limited Impact Industrial
- Medium Impact Industrial
- High Impact Industrial
- Village Core Mixed Use
- Public/Semi-Public Facilities
- Public/Semi-Public Lands (Solid Waste Facility)
- Public Agency Lands
- Tribal Lands
- Open Space (Recreation)
- Open Space (Conservation)

0 0.04 0.08 0.12 0.16 Miles

NAD 1983 StatePlane California VI FIPS 0406 Feet
Planning and Development Services



This map is generated automatically from an internet mapping site and is for reference only.
Data layers that appear on this map may or may not be accurate, current, or otherwise reliable.
THIS MAP IS NOT TO BE USED FOR NAVIGATION.

Notes:

*Residential densities in *italics*