



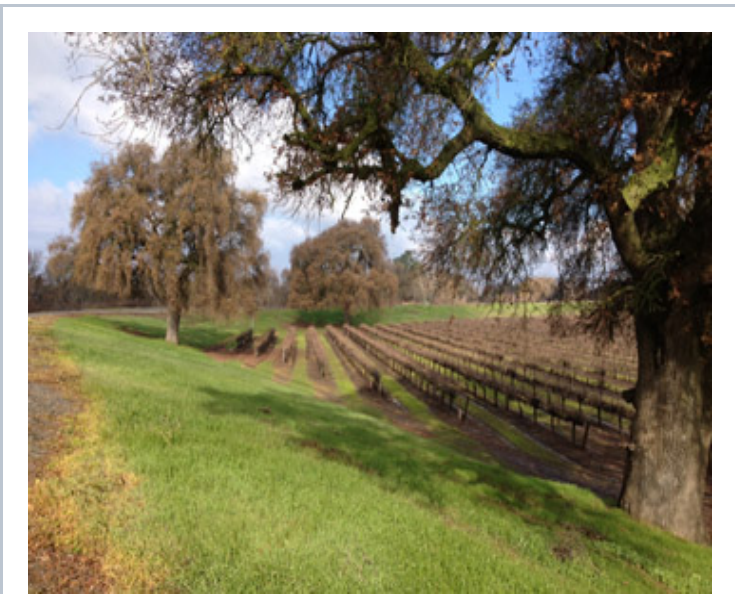
[DLRP \(/DLRP/Pages/Index.aspx\)](#) > [FMMP \(/dlrp/fmmp/Pages/Index.aspx\)](#)

## Farmland Mapping and Monitoring Program

The Farmland Mapping and Monitoring Program (FMMP) produces maps and statistical data used for analyzing impacts on California's agricultural resources. Agricultural land is rated according to soil quality and irrigation status; the best quality land is called Prime Farmland. The maps are updated every two years with the use of a computer mapping system, aerial imagery, public review, and field reconnaissance.

### Documenting Changes in Agricultural Land Use Since 1984

- [SEARCH FOR MAPS, REPORTS, AND STATISTICS \(/dlrp/fmmp/Pages/county\\_info.aspx\)](#)  
2012 data -- El Dorado and Glenn counties are now available.
- [CALIFORNIA IMPORTANT FARMLAND FINDER](#)  
(<http://maps.conservation.ca.gov/ciff>) An interactive version of the Important Farmland map data. Locate your area of interest, calculate acreage, and other useful features, using this online tool. [Introductory material about the site and its features is also available. \(/dlrp/fmmp/Pages/CIFF.aspx\)](#)
- [COUNTY PDF MAPS](#) and (<ftp://ftp.consrv.ca.gov/pub/dlrp/FMMP/pdf>) [GIS DATA DOWNLOAD SITE](#) (<ftp://ftp.consrv.ca.gov/pub/dlrp/FMMP>)  
Access full size published maps and FMMP GIS data from 1984 to the present. Statewide and regional PDF maps are also available at multiple scales.
- [CALIFORNIA FARMLAND CONVERSION REPORTS \(/dlrp/fmmp/products/Pages/ReportsStatistics.aspx\)](#)  
*The 2008-2010 Farmland Conversion Report is now available!*
- [FARMLAND REAL ESTATE DISCLOSURE LEGISLATION \(/dlrp/fmmp/Pages/RE\\_Disclosure.aspx\)](#)  
Important Farmland status must be disclosed on certain real estate transactions--read about it here.



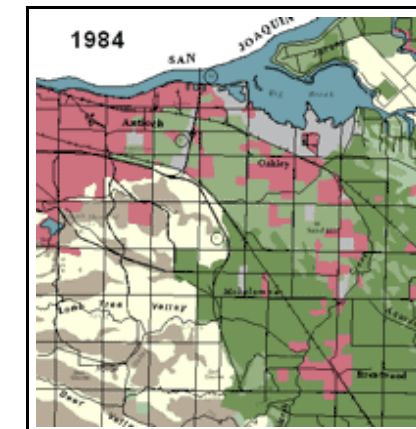
2008-2010 Conversion Report Cover Image

### About Important Farmland Maps & FMMP

- [Program Overview \(/dlrp/fmmp/overview/Pages/index.aspx\)](#)  
History -- Funding -- Staff -- Obtaining Data -- *What is Prime Farmland?*
- [Important Farmland Map Details \(/dlrp/fmmp/mccu/Pages/index.aspx\)](#)  
Map Categories -- Prime Soil Lists -- Mapping and Review Methods -- Data Uses
- [Product Descriptions \(/dlrp/fmmp/products/Pages/Index.aspx\)](#)  
Standard and Custom Maps -- Reports -- Statistics
- FMMP Continuous Improvement  
[Rural Land Mapping Project \(/dlrp/fmmp/Pages/rural\\_land\\_mapping.aspx\)](#) [Proposition 13 Additions & Enhancements \(/dlrp/fmmp/Pages/water\\_bond.aspx\)](#)

### Long Term Trends

- [Fast Facts \(/dlrp/fmmp/trends/Pages/FastFacts.aspx\)](#)  
A brief summary of changes between 1984 and the present.
- [Urbanization Maps and Graphics \(/dlrp/fmmp/trends/Pages/Index.aspx\)](#)  
Regional maps depicting urban change and Important Farmland status for various parts of the state (PDF and animated GIF).
- [Statistical Summaries \(/dlrp/fmmp/trends/Pages/stat\\_summaries.aspx\)](#)  
County totals and statewide net change, 1984 to present.



Can't find what you're looking for? Try our [site index \(/dlrp/fmmp/overview/Pages/site\\_index.aspx\)](/dlrp/fmmp/overview/Pages/site_index.aspx).

Some files on this site are in Adobe Acrobat (PDF) or compressed (ZIP) format. Utilities to read both are freely available on the Internet. Spreadsheet information is formatted in Excel 2000 for Windows.

Geographic information (GIS data) on the FTP site is posted in ESRI Shape File (SHP) format, with metadata in both XML and HTML formats.



[\(/dlrp/Pages/Index.aspx\)](/dlrp/Pages/Index.aspx)

Division of Land Resource Protection

---

### Farmland Mapping and Monitoring Program Links

---

[Overview \(/dlrp/fmmp/overview/Pages/index.aspx\)](/dlrp/fmmp/overview/Pages/index.aspx)

[Access Maps, Reports, & Data \(/dlrp/fmmp/Pages/county\\_info.aspx\)](/dlrp/fmmp/Pages/county_info.aspx)

[Map Categories, Criteria & Uses \(/dlrp/fmmp/mccu/Pages/index.aspx\)](/dlrp/fmmp/mccu/Pages/index.aspx)

[Product Descriptions \(/dlrp/fmmp/products/Pages/Index.aspx\)](/dlrp/fmmp/products/Pages/Index.aspx)

[Long Term Trends \(/dlrp/fmmp/trends/Pages/Index.aspx\)](/dlrp/fmmp/trends/Pages/Index.aspx)

---

[Back to Top](#)

[Conditions of Use](#)

[Privacy Policy](#)

[Accessibility](#)

[Contact Us](#)

