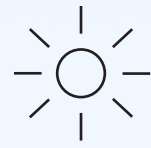


Sun and Weather



Sunny

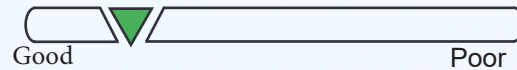
Date:

5-5-22

Photo Time:

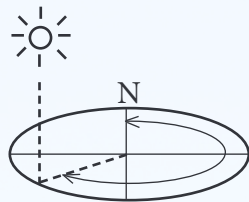
7:59 AM

Visibility:



Air Quality: Good

Sun Azimuth:



85.47°

Sun Angle:

24.02°

Lighting Angle on Project:

Side Lit

Wind:

8 mph

Cloud Cover:

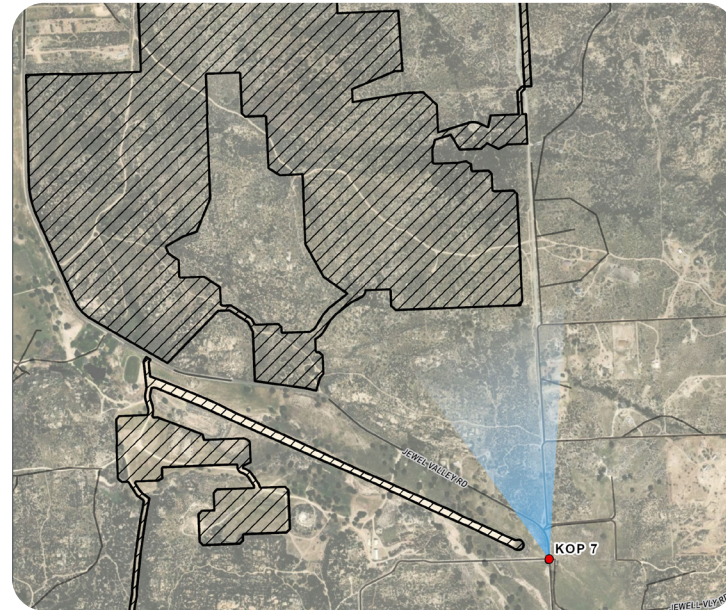
0%

Temperature (°F):

56°F

Simulation was prepared using information provided by client. Locations, colors, and heights may vary based on final engineering and design.

Starlight Solar Project



STARLIGHT
SOLAR
KOP 7

- Key Observation Point (KOP)
- Photography Angle
- Project Area

0 0.1 0.3 Miles



Approximate Distance to Solar Field Corridor:

0.67 miles

Project Location

Front Elevation

12' max

Side Elevation

6' max

Structure Diagram

KOP 7 - Jewel Valley Road

Base Photographic Documentation

Latitude (°): **32.6394**

Longitude (°): **-116.2727**

Viewpoint Elevation (feet): **3414**

Camera Height (meters): **1.5**

Camera Heading (degrees):
319.89

Camera Make & Model:
Nikon D5600

Camera Sensor Size (mm):
23.6 x 15.6

Crop Factor:
1.53

Lens Make & Model:
AF-P Nikkor

Lens Focal Length (mm):
32

Image Size (pixels):
6000 x 4000

Single frame simulation approximates 50mm full frame equivalent.

Viewing Instructions: Printed at 100% the resulting simulation is 16 inches wide by 10 inches high. At this size and focal length, the simulation should be viewed at arms length (24 inches). If viewed on a computer monitor, scale should be 100%.

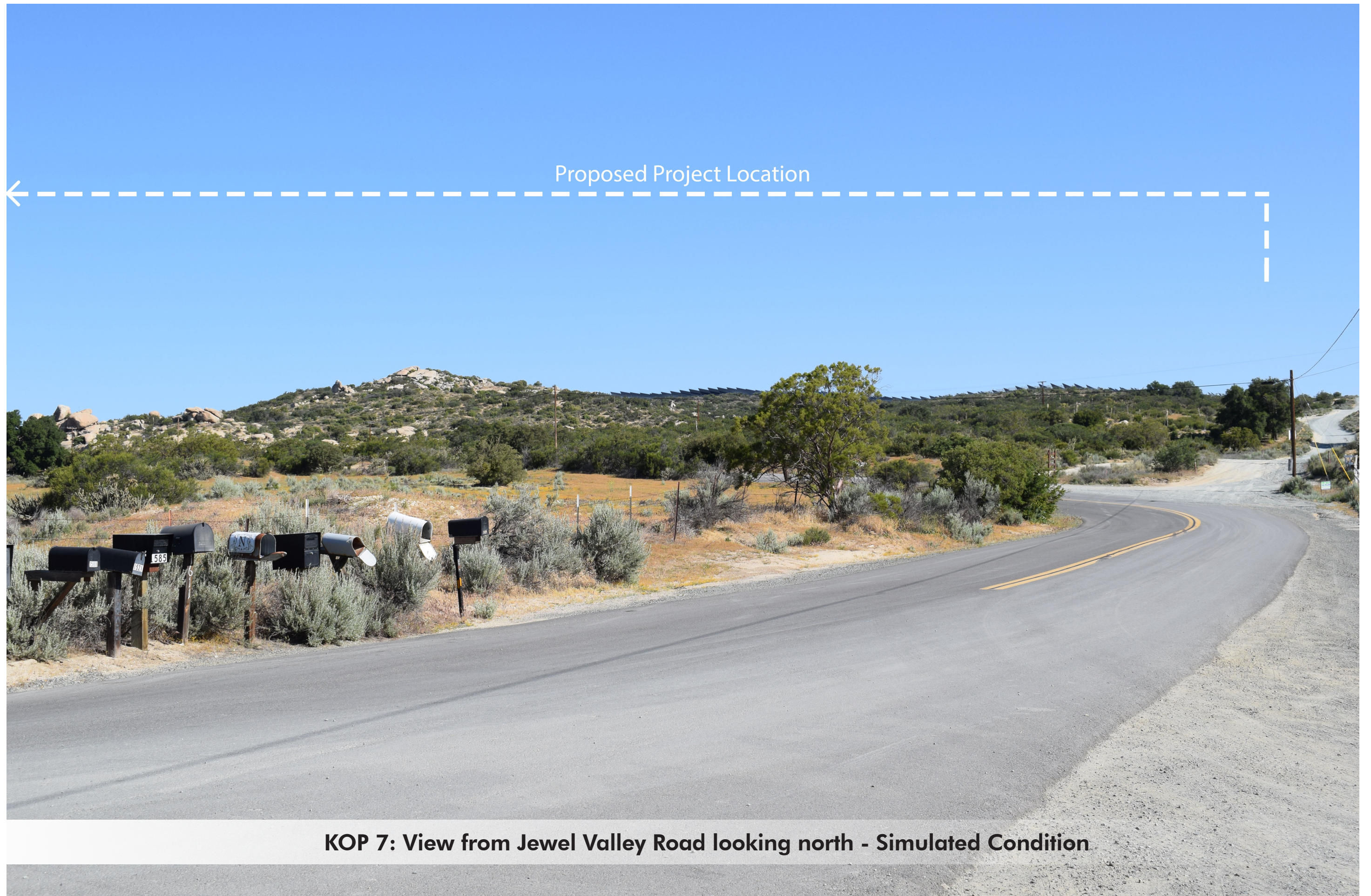
SWCA[®]
ENVIRONMENTAL CONSULTANTS



Extent of Single Frame Simulation



KOP 7: View from Jewel Valley Road looking north - Existing Condition



KOP 7: View from Jewel Valley Road looking north - Simulated Condition

Starlight Solar Project

Sun and Weather

Sunny

Date:

5-4-22

Photo Time:

1:47 PM

Visibility:

Good

Poor

Air Quality: Good

Sun Azimuth:

N

222.99°

Sun Angle:

68.40°

Lighting Angle on Project:

Side Lit

Wind:

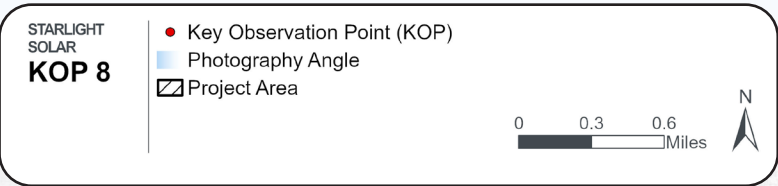
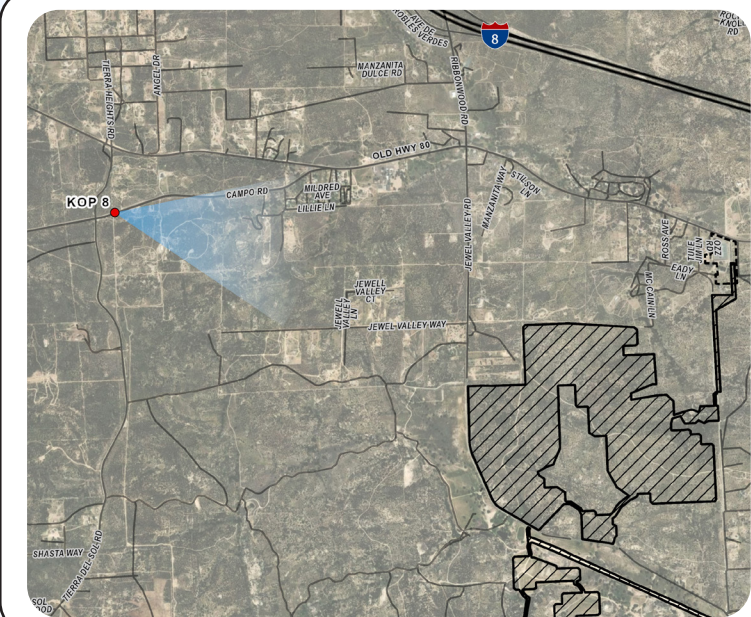
11 mph

Cloud Cover:

0%

Temperature (°F):

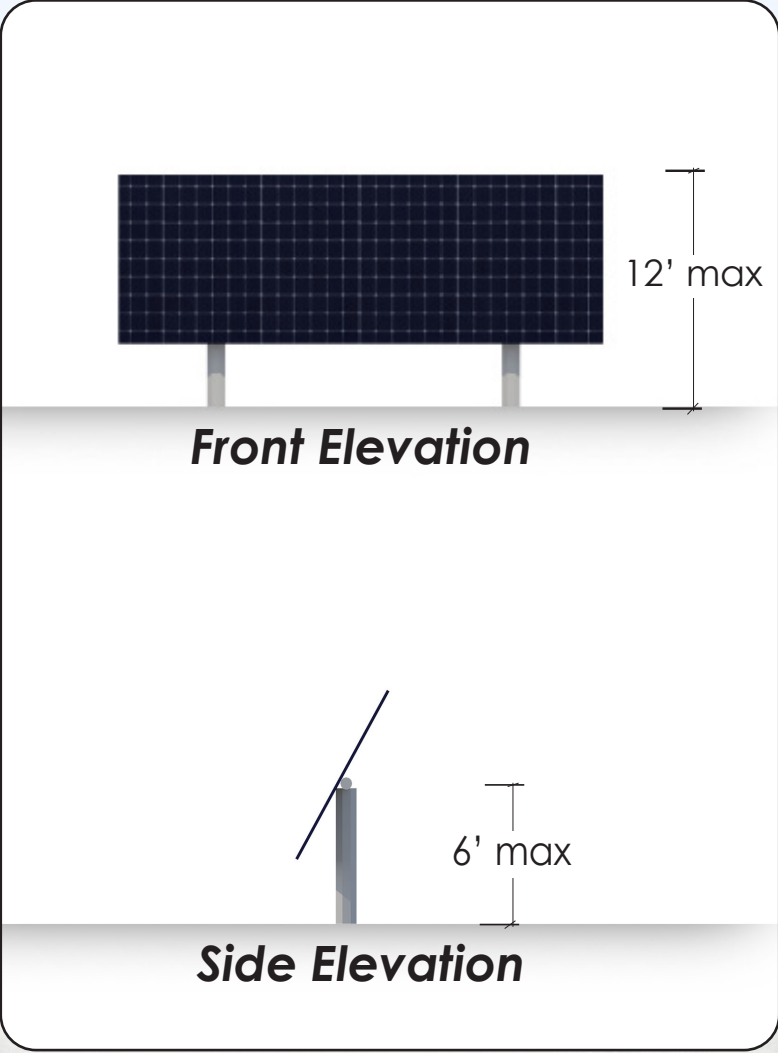
73°F



Approximate Distance to Solar Field Corridor:

1.77 miles

Project Location



Structure Diagram



KOP 8 - Highway 94

Base Photographic Documentation

Latitude (°): 32.6659

Longitude (°): -116.3153

Viewpoint Elevation (feet): 3881

Camera Height (meters): 1.5

Camera Heading (degrees): 108.22

Camera Make & Model: Nikon D5600

Camera Sensor Size (mm): 23.6 x 15.6

Crop Factor: 1.53

Lens Make & Model: AF-P Nikkor

Lens Focal Length (mm): 32

Image Size (pixels): 6000 x 4000

Single frame simulation approximates 50mm full frame equivalent.

Viewing Instructions: Printed at 100% the resulting simulation is 16 inches wide by 10 inches high. At this size and focal length, the simulation should be viewed at arms length (24 inches). If viewed on a computer monitor, scale should be 100%.



Simulation was prepared using information provided by client. Locations, colors, and heights may vary based on final engineering and design.



KOP 8: View from Highway 94 looking east - Existing Condition