

**Negative Archaeological Resources Survey
Report for the Pasqual Heights Project
San Diego County, California**

Project No. PDS2024-TM-5657

Lead Agency
County of San Diego
Department of Planning and Development Services
Contact: Donna Beddow
5510 Overland Avenue, Suite 210
San Diego, CA 92123

Project Proponent
Touchstone Communities
9815 Mira Mesa Boulevard
San Diego, CA 92131

Prepared by



Carmen Zepeda-Herman, M.A.
County-Approved Preparer



Nathaniel Yerka – Author
Project Archaeologist

RECON Environmental, Inc.
3111 Camino del Rio North, Suite 600
San Diego, CA 92108
P 619.308.9333

RECON Number 10597
September 17, 2025

PDS2024-TM-5657
PDS2025-DB-25-00

NATIONAL ARCHAEOLOGICAL DATA BASE INFORMATION

Author(s): Nathaniel Yerka and Carmen Zepeda-Herman, M.A.

Consulting Firm: RECON Environmental, Inc.
3111 Camino del Rio North, Suite 600
San Diego, CA 92108
(619) 308-9333
RECON Number 10597

Client/Project Proponent: Touchstone Communities
9815 Mira Mesa Boulevard
San Diego, CA 92131

Report Date: September 17, 2025

Report Title: Negative Archaeological Resources Survey Report for the Pasqual Heights Project

Project Number: PDS2024-TM-5657

Type of Study: Intensive pedestrian survey

New Sites: None

Updated Site: P-37-012531

USGS Quadrangle Map: Escondido, 1975

Acreage: 10.39 acres

Keywords: Negative results

September 17, 2025

Ms. Donna Beddow
County of San Diego
Department of Planning and Development Services
5510 Overland Avenue, Suite 210
San Diego, CA 92123

Reference: Negative Archaeological Resources Survey Report for the Pasqual Heights Project
(PDS2024-TM-5657; RECON Number 10597)

Dear Ms. Beddow:

This letter report provides the methods and results used for the archaeological resources survey for the Pasqual Heights Project (project).

PROJECT LOCATION

County:	San Diego (Figure 1; all figures are located in Attachment 1)
U.S. Geological Survey 7.5' Quadrangle:	Escondido 1975 (Figure 2)
Elevation:	Ranges between 709–812 feet above mean sea level
Survey Type:	Intensive Pedestrian
Date of Survey:	September 30, 2024
Field Crew:	Nathanial Yerka (RECON Environmental, Inc.) with Shuuluk Linton (Rincon Band of Luiseño Indians) and Jerimiah Kolb (Rincon Band of Luiseño Indians)

DESCRIPTION

The project area is located at 830 Idaho Avenue within unincorporated San Diego County (Assessor's Parcel Number 234-160-25). The 10.39-acre project area is largely undeveloped except for a single-family residence and ancillary structures. The project area is bordered by San Pasqual Valley Road to the northeast and Idaho Avenue to the southeast. The project area is surrounded by single-family residential uses to the north, south, and west, a church to the southeast, and a garden center to the east (Figure 3). The project area and surrounding properties are designated as Village Residential (VR-2) in the County of San Diego's General Plan and are zoned A70 (Limited Agricultural).

The project proposes the demolition of the existing single-family residence and construction of 42 single-family residential lots on the 10.39-acre project area. The project would not require a zone change or general plan amendment. The current land use designation of Village Residential (VR-2) allows two dwelling units per acre, for a total of 21 lots. The project would utilize the Density Bonus Law as updated by Assembly Bill 1287 to increase the density to 42 lots by reserving 29 percent (7 lots) of the base density units for very-low- and moderate-income households, as follows: 15 percent of the base density (4 lots) reserved for very-low-income households, plus an additional 14 percent of the base density (3 lots) reserved for moderate-income households. The project would also include a sewer lift station and a bio-filtration basin in the southeast portion of the project area and a water-pressure-reducing station in the eastern portion of

the project area. Project construction is anticipated to begin in August 2026 and last for approximately two years. Grading would include 74,791 cubic yards of cut and 74,893 cubic yards of fill, for a total soil import quantity of 102 cubic yards.

AREA OF POTENTIAL EFFECT

The Area of Potential Effect (APE) is considered the 10.39-acre project area.

CULTURAL SETTING

The prehistoric cultural sequence in San Diego County is generally divided into three basic periods: the late Pleistocene/early Holocene dated between about 12,000 and 8,000 Before Present (BP) and manifested by the San Dieguito Complex (Erlandson et al. 2007), the Middle Holocene from approximately 8,000 to 4,000 BP and manifested by the coble and core technology of the La Jollan Complex (True 1958, 1980); and the Late Holocene lasting from approximately 4,000 BP to historic contact (AD 1769) and represented by the Cuyamaca and San Luis Rey complexes in San Diego County (Moratto 1984; True 1966). This latest complex is marked by the appearance of ceramics, small arrow points, and cremation burial practices (True 1966).

Late Pleistocene/Early Holocene (12,000 to 8,000 BP)

Paleo-Indian Period is the term given to human occupation during the Late Pleistocene/Early Holocene. The earliest part of the Paleo-Indian Period is represented by the Clovis Complex, characterized by the Fluted Point Tradition. Lanceolate bifaces with edge-ground concave bases and at least one central flake-scar running from the bottom to the tip of the biface characterize the artifact assemblage. However, the dates for these points are problematic in the Great Basin and California because no fluted points in California have been associated with radiocarbon dates nor found in association with Pleistocene fauna (Rondeau et al. 2007).

The San Dieguito Complex is more widely represented in San Diego County during the Early Holocene than the Clovis Complex. The San Dieguito assemblage consists of well-made scraper planes, choppers, scraping tools, crescentics, elongated bifacial knives, and leaf-shaped points. The San Dieguito Complex is thought to represent an early emphasis on hunting (Warren et al. 1998). The C.W. Harris Site (CA-SDI-149) is the most thoroughly investigated San Dieguito component in San Diego County and has an artifact assemblage similar to that of the Lake Mojave Complex of the Mojave Desert (Moratto 1984; Warren et al. 1998).

Human occupation before the Paleo-Indian Period has been a point of controversy by many researchers (Erlandson et al. 2007). Some archaeologists argue that a Californian pre-Clovis occupation existed, citing several sites within the Mojave and Colorado deserts, including the Yuha Pinto Wash, Lake Manix, Calico Hill, and China Lake sites (Davis et al. 1980). The archaeological community distrusted the early radiocarbon dates assigned to the sites because they came from questionable materials (Erlandson et al. 2007; Sutton et al. 2007). Recently, dates from Chile (the Monte Verde site dating to 12,500 BP), from Oregon (the Paisley Caves dating to 12,300 BP), and the Northern Channel Islands off the coast of Santa Barbara, California (Arlington Man dating to 10,900 BP and Daisy Cave dating to 10,700 BP) are changing the skepticism of pre-Clovis occupation in California (Erlandson et al. 2007; Jenkins 2012).

Middle Holocene (8,000 to 4,000 BP)

The La Jolla Complex of the Archaic Period is the coastal San Diego County manifestation of the widespread Millingstone Horizon. Archaic assemblages in interior northern San Diego County have been designated as the Pauma Complex. The La Jolla and Pauma complexes have very similar assemblages and are thought to be different environmental adaptations of the same culture (True 1958). Because of the warmer and drier conditions, the Middle Holocene brings an apparent shift toward a more generalized economy and an increased emphasis on seed resources, small game, and shellfish. Along with an economic focus on gathering plant resources, the settlement system appears to have been more sedentary. Coastal cultures gradually increased their use of marine foods and shellfish as sea levels began to rise at the end of the Early Holocene, creating more productive bays and estuaries (Byrd and Raab 2007). The La Jolla assemblage is dominated by rough, cobble-based choppers and scrapers, manos, slab and basin metates, and flexed human burials (inhumations; Warren et al. 1998). Elko and Pinto-like projectile points appeared late in the period (Warren et al. 1998). Large deposits of marine shell at coastal sites argue for the importance of shellfish gathering during the Middle Holocene (True 1980). Pauma Complex sites are typically found on terraces or ridges above a water source such as a stream. They often do not have discernible midden development, but they may have subsurface deposits. While they typically have numerous portable metates and manos, they lack bedrock milling, mortars, and pestles (True and Waugh 1981).

During the latter part of this period, estuaries and bays began to fill with sediment owed to the rise, and later stabilization, of the rise in sea levels, resulting in a reduced shellfish population (Masters and Gallegos 1997). The degree of silting in of the major bays and rivers along the San Diego coastline varied so that there was continuous occupation of the San Diego Bay, Peñasquitos Lagoon, San Elijo Lagoon, Las Flores Creek, and San Mateo Creek through to the Late Holocene. Recent data has altered the idea that the coast was abandoned or occupied seasonally after sea level rise. Evidence of wide-reaching trade networks from the coast to the western edges of the Great Basin and north to central Oregon has been found through the presence of Olivella grooved rectangular beads, pushing the extended trade network before the Late Holocene as previously thought (Byrd and Raab 2007; Raab and Howard 2000; Jenkins and Erlandson 1997).

Late Holocene (After 4,000 BP)

The late prehistoric archaeology of the San Diego coast and foothills, beginning approximately 1,500 years ago, is characterized by two major complexes: the Cuyamaca and the San Luis Rey. This period is characterized by higher population densities and elaborations in social, political, and technological systems (Gallegos 2002; Moratto 1984). Economic systems diversify and intensify during this period, with the continued elaboration of trade networks, the widespread use of shell-beads, and the appearance of more labor-intensive but effective technological innovations (Gamble and King 2011; McDonald and Eighmey 1998). Burial practices changed from inhumations to cremations and paddle and anvil pottery and smaller projectile points (bow and arrows) are introduced. Other cultural traits include rock art and an increase in bedrock milling inland (Byrd and Raab 2007; Gallegos 2002). The Late Holocene also brought about resource intensification on more costly or labor-intensive resources (Byrd and Raab 2007). This is highlighted in the high quantities of smaller shellfish such as *Donax* sp., smaller fish like nearshore schooling fish, and small land mammals (rodents and rabbits) in coastal northern San Diego County (Byrd and Reddy 2002).

Archaeology of the San Diego coast and foothills during the Late Holocene is characterized by the Cuyamaca Complex. It is primarily known from the work of D.L. True (1970) at Cuyamaca Rancho State Park. The

Cuyamaca Complex is characterized by the presence of steatite arrowshaft straighteners, steatite pendants, steatite comales (heating stones), Tizon Brown Ware pottery, ceramic figurines reminiscent of Hohokam styles, ceramic "Yuman bow pipes," ceramic rattles, miniature pottery, various cobble-based tools (e.g., scrapers, choppers, and hammerstones), bone awls, manos and metates, mortars and pestles, and Desert Side-Notched (more common) and Cottonwood Series projectile points (True 1970).

The San Luis Rey Complex was based primarily on excavations near Pala and thought to represent the ancestors of the ethnographic Luiseño (True 1966, 1970), who arrived in northern San Diego County as part of the large series of coastward migrations of Shoshonean speakers, sometimes called the Takic Wedge (Meighan 1954; Waugh 1986). San Luis Rey I is characterized by slab metates and mortars, both of which can be found in shaped and unshaped, bedrock and portable configurations. Cremations, bone awls, and stone and shell ornaments are also prominent in the material culture. In the San Luis Rey II assemblage, pottery cooking and storage vessels, cremation urns, and polychrome pictographs appear. Chipped stone arrowpoints are dominated by the Cottonwood Triangular series but Desert side-notched, Dos Cabezas serrated, leaf-shaped, and stemmed styles also occur.

Ethnohistory

The APE is within the traditional territory of the Luiseño. The Luiseño are Shoshonean or Uto-Aztecan-speaking populations that are found in northern San Diego, southern Orange, and southeastern Riverside counties from the onset of ethnohistoric times through the present day. The Luiseño are linguistically and culturally related to the Gabrielino and the Cahuilla and appear to be the direct descendants of Late Prehistoric populations. Historically, the Luiseño social structure was the clan triblet. The triblet was composed of patrilineally related people who were politically and economically autonomous from neighboring triblets. Unlike other Takic-speaking tribes that surrounded them, the Luiseño do not appear to have been organized into exogamous moieties (descent groups that married outside one's birth group) but may have been loosely divided into mountain-oriented groups and ocean-oriented groups (Bean and Shipek 1978). One or more clans would reside together in a village (Oxendine 1983). A heredity village chief held a position that controlled economic, religious, and warfare powers (Bean and Shipek 1978).

A wide variety of plants growing in the various biotic communities between the coast and mountains were utilized by the Luiseño, including acorns, annual grasses, seeds, yucca, sage, chia, lemonade berry, manzanita, and other wild greens and fruits (Kroeber 1925). These resources become available at different times of the year, which prompted moves to different campsites. In addition to plant-associated moves, trips to coastal camps to exploit marine resources such as shellfish, fish, and marine mammals took place. Animal resources used by the Luiseño included most of the mammals occurring in their territory, except for predator animals and tree squirrels (Bean and Shipek 1978). Reptiles were also avoided as a food source.

Historic Period

The Spanish Period in California (1769–1821) represents a time of European exploration and settlement. San Diego was first settled by Spanish colonists in AD 1769, when the Mission San Diego de Alcalá and Presidio de San Diego were founded. The Spanish Period economy was based on cattle grazing. Missions were major population centers, and mission cattle roamed freely over open range, tended by Native American vaqueros. European contact substantially and pervasively stressed the social, political, and economic fabric of Native American culture (Shipek 1988, 1991). Disease, starvation, and a general institutional collapse caused

emigration, birth rate declines, and high adult and infant mortality levels for the local Native American groups in San Diego County (Shipek 1991).

During the Mexican Period (1822–1848), the mission system was secularized by the Mexican government, allowing for the use of these lands to dramatically expand the rancho system. The southern California economy became increasingly based on cattle ranching (Smythe 1908). The Mexican Period ended when Mexico signed the Treaty of Guadalupe Hidalgo on February 2, 1848, concluding the Mexican American War (1846–1848; Rolle and Verge 2008). A great influx of Americans and Europeans followed the discovery of gold in northern California in 1848. California became a state in 1850 (Rolle and Verge 2008).

American settlement in southern California was slow during the Gold Rush, when northern California experienced a dramatic population explosion (Rolle and Verge 2008). By the late 1800s, the county witnessed the beginnings of a recognizable downtown San Diego area and the gradual development of a number of outlying communities, many of which were established around previously defined ranchos and land grants. These communities were composed of an aggregate of people who lived on scattered farmsteads tied together through a common school district, church, post office, and country store (Hector and Van Wormer 1986; Pourade 1963).

METHODS

RECON Environmental, Inc. (RECON) archaeologist Nathaniel Yerka, accompanied by Shuuluk Linton and Jeremiah Kolb from Rincon Band of Luiseño Indians, conducted the pedestrian survey of the 10.39-acre APE on September 30, 2024. The project area was inspected for evidence of archaeological materials such as flaked and ground stone tools or fragments, ceramics, milling features, and human remains. Photographs and field notes were taken to document the environmental setting and general conditions.

RECON reviewed archival information and performed a pedestrian survey of the project APE. RECON requested a records search from the California Historical Resources Information System, South Coastal Information Center (SCIC) located at San Diego State University (Table 1, provided at the end of this report; Confidential Attachment 1). The records search with a 1.0-mile radius buffer indicates 58 cultural investigations occur within the search area, seven of which include the APE. Four hundred and forty-seven cultural resources are recorded within the search area: six are prehistoric (one of which is an isolate), 438 are historic-era resources, and three resources comprise both prehistoric and historic resources (multicomponent). The prehistoric sites include lithic scatters, lithic scatters with ground stone, ceramic scatters, and bedrock milling features. The prehistoric isolate is a hammerstone. Historic resources include single-family properties, 1-to-3-story commercial buildings, ancillary structures, educational buildings, religious buildings, foundations, trash scatters, trees, walls, mines, and roads. The multicomponent sites comprise lithic scatters, lithic scatter with ground stone, single-family properties, trash scatters, and foundations. Also included within the buffer are 441 historic addresses. One previously recorded cultural resource occurs within the APE (P-37-012531).

P-37-012531 was recorded in 1991 by ERC Environmental as an historic house complex with associated trash scatter along with a possible prehistoric lithic scatter. The house complex was noted to appear on the 1928 aerial photograph located at the County of San Diego offices. Besides the main house, a garage, a concrete reservoir, and decorative rock alignments were recorded, along with numerous whiteware and transferware ceramic fragments; clear, amber, aqua, and purple glass fragments; porcelain fragments; and numerous

miscellaneous iron fragments. One prehistoric fine-grained metavolcanic flake and one marine shell fragment were also recorded and depicted on a sketch map (James et al. 1991).

A subsequent architectural and historic assessment was conducted for the single-story residence and ancillary structures recorded within P-37-012531 by Richard Carrico (2024) where the determination was made that demolition of the Vernacular Residence at 830 Idaho Avenue will not constitute an adverse effect or impact upon significant historical or architectural resources. Given that the proposed action will not cause adverse effects to an important or significant building, no mitigating measures are required.

Native American Outreach and Consultation

RECON contacted the Native American Heritage Commission (NAHC) on August 6, 2024, requesting a search of their Sacred Lands File to identify spiritually significant and/or sacred sites or traditional use areas, and to provide a list of local Native American Tribes, Bands, or individuals who may have concerns about the proposed project (Attachment 2). The NAHC responded on August 16, 2024, indicating that their search of the Sacred Lands File was positive. The NAHC provided a list of Native American Tribes who may also have knowledge of cultural resources in the project area (see Attachment 2).

Tribal Scoping Letters

Tribal scoping letters were sent via email or a hard copy letter on October 1, 2024, to the Tribal list provided by the NAHC; a sample of the Tribal Scoping Letter as well as the Tribal responses are found in Attachment 3. Erica M. Pinto from the Jamul Indian Village responded on October 1, 2024, stating in part that the Tribe will defer to the Tribes up in the Escondido area, San Pasqual, Santa Ysabel, Rincon, Pauma, Pala, etc. Ray Teran representing the Viejas Band of Kumeyaay Indians ("Viejas") reviewed the proposed project and responded on October 1, 2024, that the project area has cultural significance or ties to Viejas and states that cultural resources have been located within or adjacent to the APE of the proposed project. The Viejas Band request that a Kumeyaay Cultural Monitor be on site for ground disturbing activities and to inform them of any new developments such as inadvertent discovery of cultural artifacts, cremation sites, or human remains. Clint Linton from Santa Ysabel representing the Kumeyaay Nation responded on October 2, 2024, requesting a Kumeyaay Native American monitor participate in the survey to which Carmen Zepeda-Herman responded on October 3, 2024, with the explanation that the survey had already taken place but that in the future, RECON will invite both Luiseno and Kumeyaay representatives on Escondido area surveys. The Rincon monitors that participated in the survey requested construction monitoring.

RESULTS

No prehistoric or historic archaeological material was observed within the project APE. The project area was surveyed under clear skies and warm temperatures. The survey commenced in the southeast APE corner with northwest-southeast transects that translated from east to west across the remainder of the APE. The APE is fully disturbed due to agriculture, single-family property development, and grading. Along the southern end of the northeastern APE boundary is a graded vehicle parking area—a likely Park and Ride—that is accessed via San Pasqual Valley Road through a dual wooden post and single metal chain gate; the parking area is surfaced in asphalt (Photograph 1; all photographs are located in Attachment 4). Also along the northeastern APE boundary are utility poles, earthen berms, and underground utility boxes. The northern APE corner exhibits a concrete rubble and earthen berm along with a T-post and barbed wire fence and

ornamental vegetation that runs along the northwestern APE boundary (Photograph 2). The southeastern APE boundary exhibits street signage, an earthen berm, underground utilities, ornamental vegetation, and a concrete culvert with a corrugated metal pipe that allows drainage beneath Idaho Avenue (Photograph 3). The southwestern APE boundary exhibits a mix of chain-link and corral fencing types along with ornamental vegetation (Photograph 4). The APE exhibits a single-family residence with associated garage (Photograph 5) and reservoir (Photograph 6), an updated well structure (Photograph 7), a shallow northwest-southeast trench (Photograph 8), numerous irrigation lines, primary and secondarily placed granite boulders, ornamental trees, numerous tree stumps, vegetation piles, and dumping of various material types including construction rubble, concrete rubble, asphalt, imported gravel, and dimensional lumber.

The historic component of the multicomponent site P-37-012531 was observed during the survey—the residence, garage, reservoir, and fieldstone walls were noted to be as recorded although the reservoir was filled with construction rubble. The mapped isolated prehistoric component—the fine-grained metavolcanic flake and marine shell fragment—were not observed.

The archaeological resources survey observed no previously unrecorded prehistoric or historic archaeological material within the project APE. The SCIC records search results indicate one previously recorded multicomponent cultural resource (P-37-012531) within the project APE and no previously recorded resources recorded adjacent to the APE. A subsequent architectural and historic assessment of P-37-012531 determined that the proposed demolition of existing structures, grading, and construction of a new residential development within the subject parcel will not adversely affect/impact significant or important architectural or historical resources. Given that the proposed action will not cause adverse effects to an important or significant building, no mitigating measures are required (Carrico 2024).

Therefore, the project would not have a significant impact on known archaeological resources. The existing conditions indicate that the project APE has been fully disturbed by agriculture, single-family property development, and grading. The potential for intact buried archaeological resources is considered low. No further archaeological resources work is recommended for the project.

Thank you for the opportunity to work on this project. If you have any questions, please contact me at (619) 308-9333 extension 192 or Carmen Zepeda-Herman at extension 133.

Sincerely,



Carmen Zepeda-Herman, M.A.
County-Approved Archaeologist



Nathaniel Yerka
Project Archaeologist

NDY:jg

REFERENCES

- Bean, Lowell John, and Florence C. Shipek
1978 Luiseño. In *California*, edited by Robert F. Heizer. *Handbook of North American Indians*, vol. 8, William G. Sturtevant, general editor. Smithsonian Institution.
- Byrd, Brian F., and L. Mark Raab
2007 Prehistory of the Southern Bight: Models for a New Millennium. In *California Prehistory: Colonization, Culture, and Complexity*, edited by Terry L. Jones and Kathryn A. Klar. Rowman Altamira Press.
- Byrd, Brian F., and Seetha N. Reddy
2002 Late Holocene Adaptations along the Northern San Diego Coast: New Perspectives on Old Paradigms. In *Catalysts to Complexity: The Late Holocene on the California Coast*, edited by Jon M. Erlandson and Terry L. Jones. Institute of Archaeology, University of California, Los Angeles.
- Carrico, Richard
2024 *Architectural and Historic Evaluation of Structures At 830 Idaho Avenue, Escondido, California*. Recuerdos Research.
- Cline, Lora L.
1980 *The Kwaaymii, Reflections on a Lost Culture*. IVC Museum society, El Centro, California.
- Davis, Emma Lou, Cathryn H. Brown, and Jacqueline Nichols
1980 Evaluation of Early Human Activities and Remains in the Colorado Desert. Document on file with the Great Basin Foundation, San Diego, and BLM, Riverside.
- Erlandson, Jon M., Torben C. Rick, Terry L. Jones, and Judith F. Porcasi
2007 One If by Land, Two If by Sea: Who Were the First Californians? In *California Prehistory: Colonization, Culture, and Complexity*, edited by Terry L. Jones and Kathryn A. Klar. Rowman Altamira Press.
- Gallegos, Dennis R.
2002 Southern California in Transition: Late Holocene Occupation of Southern San Diego County. In *Catalysts to Complexity: The Late Holocene on the California Coast*, edited by Jon M. Erlandson and Terry L. Jones. Institute of Archaeology, University of California, Los Angeles.
- Gamble, Lynne, and Chester King
2011 Beads and Ornaments from San Diego: Evidence for Exchange Networks in Southern California and the American Southwest. *Journal of California and Great Basin Anthropology* 31(2):155–178.
- Hector, Susan M., and Stephen R. Van Wormer
1986 Broken Fragments of Past Lifeways: Archaeological Excavations at Los Peñasquitos Ranch House, Volumes I and II. RECON.

James, Del, Steven Briggs, and Scott Campbell

- 1991 Site form for P-37-012531 on file at the South Coastal Information Center, San Diego State University.

Jenkins, Dennis

- 2012 Age Western Stemmed Projectile Points and Human Coprolites at the Paisley Cave. *Science*, July 13: 223-228.

Jenkins, D. L., and J. M. Erlandson

- 1997 Olivella Grooved Rectangle Beads from a Middle Holocene Site in the Fort Rock Valley, Northern Great Basin. *Journal of California and Great Basin Anthropology* 19: 296-302.

Kroeber, A. L.

- 1925 Handbook of the Indians of California. *Bureau of American Ethnology Bulletin* 78.

Lockhart, Bill

- 2006 *The Color Purple: Dating Solarized Amethyst Container Glass*. *Historical Archaeology*, 40(2): 45-56.

Masters, Patricia M., and Dennis Gallegos

- 1997 Environmental Change and Coastal Adaptations in San Diego County During the Middle Holocene. In *Archaeology of the California Coast During the Middle Holocene*, edited by J. M. Erlandson and M. A. Glassow. *Perspectives in California Archaeology* 4: 11-22. University of California, Los Angeles.

McDonald, Meg, and James D. Eighmey

- 1998 Late Period Prehistory in San Diego: In *Prehistoric and Historic Archaeology of Metropolitan San Diego: A Historic Properties Background Study*. Unpublished report on file at ASM Affiliates, Carlsbad.

Meighan, Clement W.

- 1954 A Late Complex in Southern California Prehistory. *Southwestern Journal of Anthropology* 10: 215-227.

Moratto, Michael J.

- 1984 *California Archaeology*. Academic Press.

Oxendine, J.

- 1983 *The Luiseno Village During the Late Prehistoric Era*. Ph.D. dissertation, University of California, Riverside.

Pourade, Richard F.

- 1963 The Silver Dons. *The History of San Diego*. Union-Tribune Publishing.

Raab, L. Mark, and William J. Howard

- 2000 Modeling Cultural Connections between the Southern Channel Islands and Western United States: The Middle Holocene Distribution of *Olivella* Grooved Rectangular Beads. In *Proceedings of the Fifth California Islands Symposium*, edited by K. Mitchell and C. Mitchell: 590–597. Santa Barbara Museum of Natural History.

Rolle, Andrew, and Arthur Verge

- 2008 *California: A History*. Harlan Davidson, Inc.

Rondeau, Michael F., Jim Cassidy, and Terry L. Jones

- 2007 Colonization Technologies: Fluted Projectile Points and the San Clemente Island Woodworking/Microblade Complex. In *California Prehistory: Colonization, Culture, and Complexity*, edited by Terry L. Jones and Kathryn A. Klar. Rowman Altamira Press.

Shipek, Florence C.

- 1988 *Pushed into the Rocks*. University of Nebraska Press.
- 1991 *Delfina Cuero: Her Autobiography*. Ballena Press.

Smythe, William E.

- 1908 *History of San Diego: 1542-1907 An Account of the Rise and Progress of the Pioneer Settlement on the Pacific Coast of the United States*. The History Company.

Sutton, Mark Q., Mark E. Basgall, Jill K. Gardner, and Mark W. Allen

- 2007 Advances in Understanding Mojave Desert Prehistory. In *California Prehistory: Colonization, Culture, and Complexity*, edited by Terry L. Jones and Kathryn A. Klar. Rowman Altamira Press.

True, Delbert L.

- 1958 An Early Complex in San Diego County, California. *American Antiquity* 23(3): 255–263.
- 1966 Archaeological Differentiation of Shoshonean and Yuman Speaking Groups in Southern California. Ph.D. dissertation, University of California, Los Angeles. University Microfilms, Ann Arbor, Michigan.
- 1970 *Investigation of a Late Prehistoric Complex in Cuyamaca Rancho State Park, San Diego County, California*. Department of Anthropology Publications, University of California, Los Angeles.
- 1980 The Pauma Complex in Northern San Diego County: 1978. *The Journal of New World Archaeology* 3(4): 1–39.

True, D. L., and G. Waugh

- 1981 Archaeological Investigations in Northern San Diego County, California: Frey Creek. *Journal of California and Great Basin Anthropology* 3(1): 84–115.

Ms. Donna Beddow
Page 11
September 17, 2025

Warren, Claude N., Gretchen Siegler, and Frank Dittmer
1998 Paleoindian and Early Archaic Periods. In Prehistoric and Historic Archaeology of Metropolitan San Diego: A Historic Properties Background Study. On file with ASM Affiliates, Encinitas.

Waugh, M. Georgie
1986 *Intensification and Land-use: Archaeological Indication of Transition and Transformation in a Late Prehistoric Complex in Southern California*. Ph.D. dissertation, Department of Anthropology, University of California, Los Angeles.

ATTACHMENTS

- 1: Figures
- 2: Native American Heritage Commission Correspondence
- 3: Tribal Scoping Letter and Tribal Responses
- 4: Photographs

CONFIDENTIAL ATTACHMENT (Under Separate Cover)

- 1: Records Search

Table 1 Previously Recorded Cultural Resources within One Mile of Project APE				
Primary Number	Trinomial	Period	Site Type	Recording Events
P-37-000563	CA-SDI-000563	Prehistoric	Lithic scatter	n.d. (True)
P-37-005209	CA-SDI-005209	Prehistoric	Bedrock milling	1977 (Chace)
P-37-005340	CA-SDI-005340	Prehistoric	Bedrock milling, lithics, ground stone, ceramics	1977 (Chace); 1991 (ERC Environmental); 2010 (Zepeda-Herman)
P-37-010744	CA-SDI-010744	Prehistoric	Bedrock milling, lithics, ground stone	1980 (B.F. Smith)
P-37-012523	CA-SDI-012523	Multi-component	Lithic scatter, foundations, historic trash scatter	1991 (ERC Environmental)
P-37-012524	CA-SDI-012524	Historic	Trash scatter	1991 (ERC Environmental)
P-37-012530	CA-SDI-012530	Historic	Ancillary structures, trash scatter	1991 (ERC Environmental)
P-37-012531	CA-SDI-012531	Multi-component	Lithic scatter, single family property, rock alignment, reservoir	1991 (ERC Environmental)
P-37-012537	CA-SDI-012537	Multi-component	Lithic scatter, ground stone, possible house location, trash scatter	1991 (ERC Environmental)
P-37-012540	CA-SDI-012540	Prehistoric	Bedrock milling	1991 (ERC Environmental)
P-37-017752		Historic	Single family property	1983 (Donald A Cotton Associates); 1999 (CHRIS)
P-37-017753		Historic	Single family property	1983 (Donald A Cotton Associates); 1999 (CHRIS)
P-37-017754		Historic	Single family property	1983 (Donald A Cotton Associates); 1999 (CHRIS)
P-37-017755		Historic	Single family property	1983 (Donald A Cotton Associates); 1999 (CHRIS)
P-37-017756		Historic	Single family property	1983 (Donald A Cotton Associates); 1999 (CHRIS)
P-37-017757		Historic	Single family property	1983 (Donald A Cotton Associates); 1999 (CHRIS)
P-37-017758		Historic	Single family property	1983 (Donald A Cotton Associates); 1999 (CHRIS)
P-37-017759		Historic	Single family property	1983 (Donald A Cotton Associates); 1999 (CHRIS)
P-37-017760		Historic	Single family property	1983 (Donald A Cotton Associates); 1999 (CHRIS)
P-37-017761		Historic	Single family property	1983 (Donald A Cotton Associates); 1999 (CHRIS)
P-37-017762		Historic	Single family property	1983 (Donald A Cotton Associates); 1999 (CHRIS)
P-37-017763		Historic	Single family property	1983 (Donald A Cotton Associates); 1999 (CHRIS)
P-37-017764		Historic	Single family property	1983 (Donald A Cotton Associates); 1999 (CHRIS)
P-37-017765		Historic	Single family property	1983 (Donald A Cotton Associates); 1999 (CHRIS)
P-37-017766		Historic	Single family property	1983 (Donald A Cotton Associates); 1999 (CHRIS)
P-37-017767		Historic	Single family property	1983 (Donald A Cotton Associates); 1999 (CHRIS)
P-37-017776		Historic	Single family property	1983 (Donald A Cotton Associates); 1999 (CHRIS)
P-37-017788		Historic	Single family property	1983 (Donald A Cotton Associates); 1999 (CHRIS)
P-37-017789		Historic	Single family property	1983 (Donald A Cotton Associates); 1999 (CHRIS)
P-37-017790		Historic	Single family property	1983 (Donald A Cotton Associates); 1999 (CHRIS)
P-37-017791		Historic	Single family property	1983 (Donald A Cotton Associates); 1999 (CHRIS)
P-37-017792		Historic	Single family property	1983 (Donald A Cotton Associates); 1999 (CHRIS)
P-37-017793		Historic	Single family property	1983 (Donald A Cotton Associates); 1999 (CHRIS)
P-37-017794		Historic	Single family property	1983 (Donald A Cotton Associates); 1999 (CHRIS)
P-37-017798		Historic	Single family property	1983 (Donald A Cotton Associates); 1999 (CHRIS)
P-37-017840		Historic	Single family property	1983 (Donald A Cotton Associates); 1999 (CHRIS)
P-37-017841		Historic	Single family property	1983 (Donald A Cotton Associates); 1999 (CHRIS)
P-37-017842		Historic	Single family property	1983 (Donald A Cotton Associates); 1999 (CHRIS)
P-37-017843		Historic	Single family property	1983 (Donald A Cotton Associates); 1999 (CHRIS)

Table 1
Previously Recorded Cultural Resources within One Mile of Project APE

Primary Number	Trinomial	Period	Site Type	Recording Events
P-37-017844		Historic	Single family property	1983 (Donald A Cotton Associates); 1999 (CHRIS)
P-37-017845		Historic	Single family property	1983 (Donald A Cotton Associates); 1999 (CHRIS)
P-37-017846		Historic	Single family property	1983 (Donald A Cotton Associates); 1999 (CHRIS)
P-37-017847		Historic	Single family property	1983 (Donald A Cotton Associates); 1999 (CHRIS)
P-37-017848		Historic	Single family property	1983 (Donald A Cotton Associates); 1999 (CHRIS)
P-37-017849		Historic	Single family property	1983 (Donald A Cotton Associates); 1999 (CHRIS)
P-37-017850		Historic	Single family property	1983 (Donald A Cotton Associates); 1999 (CHRIS)
P-37-017851		Historic	Single family property	1983 (Donald A Cotton Associates); 1999 (CHRIS)
P-37-017852		Historic	Single family property	1983 (Donald A Cotton Associates); 1999 (CHRIS)
P-37-017853		Historic	Single family property	1983 (Donald A Cotton Associates); 1999 (CHRIS)
P-37-017854		Historic	Single family property	1983 (Donald A Cotton Associates); 1999 (CHRIS)
P-37-017855		Historic	Educational building	1983 (Donald A Cotton Associates); 1999 (CHRIS)
P-37-017856		Historic	Educational building - auditorium	1983 (Diann Marsh, Donald A. Cotton Associates)
P-37-017857		Historic	Single family property	1983 (Donald A Cotton Associates); 1999 (CHRIS)
P-37-017874		Historic	Single family property	1983 (Donald A Cotton Associates); 1999 (CHRIS)
P-37-017880		Historic	Single family property	1983 (Donald A Cotton Associates); 1999 (CHRIS)
P-37-017881		Historic	Single family property	1983 (Donald A Cotton Associates); 1999 (CHRIS)
P-37-017882		Historic	Single family property	1983 (Donald A Cotton Associates); 1999 (CHRIS)
P-37-017883		Historic	Single family property	1983 (Donald A Cotton Associates); 1999 (CHRIS)
P-37-017884		Historic	Single family property	1983 (Donald A Cotton Associates); 1999 (CHRIS)
P-37-017885		Historic	Single family property	1983 (Donald A Cotton Associates); 1999 (CHRIS)
P-37-017886		Historic	Single family property	1983 (Donald A Cotton Associates); 1999 (CHRIS)
P-37-017887		Historic	Religious building - church	1983 (Donald A Cotton Associates); 1999 (CHRIS)
P-37-017888		Historic	Single family property	1983 (Donald A Cotton Associates); 1999 (CHRIS)
P-37-017889		Historic	Single family property	1983 (Donald A Cotton Associates); 1999 (CHRIS)
P-37-017890		Historic	Single family property	1983 (Donald A Cotton Associates); 1999 (CHRIS)
P-37-017891		Historic	Single family property	1983 (Donald A Cotton Associates); 1999 (CHRIS)
P-37-017892		Historic	Single family property	1983 (Donald A Cotton Associates); 1999 (CHRIS)
P-37-017893		Historic	Single family property	1983 (Donald A Cotton Associates); 1999 (CHRIS)
P-37-017894		Historic	Single family property	1983 (Donald A Cotton Associates); 1999 (CHRIS)
P-37-017895		Historic	Single family property	1983 (Donald A Cotton Associates); 1999 (CHRIS)
P-37-017896		Historic	Single family property	1983 (Donald A Cotton Associates); 1999 (CHRIS)
P-37-017911		Historic	Single family property	1983 (Donald A Cotton Associates); 1999 (CHRIS)
P-37-017912		Historic	Single family property	1983 (Donald A Cotton Associates); 1999 (CHRIS)
P-37-017913		Historic	Single family property	1983 (Donald A Cotton Associates); 1999 (CHRIS)
P-37-017914		Historic	Single family property	1983 (Donald A Cotton Associates); 1999 (CHRIS)
P-37-017915		Historic	Single family property	1983 (Donald A Cotton Associates); 1999 (CHRIS)
P-37-017916		Historic	Single family property	1983 (Donald A Cotton Associates); 1999 (CHRIS)
P-37-017917		Historic	Single family property	1983 (Donald A Cotton Associates); 1999 (CHRIS)
P-37-017918		Historic	Single family property	1983 (Donald A Cotton Associates); 1999 (CHRIS)
P-37-017919		Historic	Single family property	1983 (Donald A Cotton Associates); 1999 (CHRIS)
P-37-017924		Historic	Single family property	1983 (Donald A Cotton Associates); 1999 (CHRIS)
P-37-017925		Historic	Single family property	1983 (Donald A Cotton Associates); 1999 (CHRIS)
P-37-017926		Historic	Single family property	1983 (Donald A Cotton Associates); 1999 (CHRIS)
P-37-017927		Historic	Single family property	1983 (Donald A Cotton Associates); 1999 (CHRIS)
P-37-017928		Historic	Single family property	1983 (Donald A Cotton Associates); 1999 (CHRIS)

Table 1 Previously Recorded Cultural Resources within One Mile of Project APE				
Primary Number	Trinomial	Period	Site Type	Recording Events
P-37-018069		Historic	Single family property	1983 (Donald A Cotton Associates); 1999 (CHRIS)
P-37-018070		Historic	Single family property	1983 (Donald A Cotton Associates); 1999 (CHRIS)
P-37-018071		Historic	Single family property	1983 (Donald A Cotton Associates); 1999 (CHRIS)
P-37-018072		Historic	Single family property	1983 (Donald A Cotton Associates); 1999 (CHRIS)
P-37-018073		Historic	Single family property	1983 (Donald A Cotton Associates); 1999 (CHRIS)
P-37-018074		Historic	Single family property	1983 (Donald A Cotton Associates); 1999 (CHRIS)
P-37-018075		Historic	Single family property	1983 (Donald A Cotton Associates); 1999 (CHRIS)
P-37-018076		Historic	Single family property	1983 (Donald A Cotton Associates); 1999 (CHRIS)
P-37-018077		Historic	Single family property	1983 (Donald A Cotton Associates); 1999 (CHRIS)
P-37-018078		Historic	Single family property	1983 (Donald A Cotton Associates); 1999 (CHRIS)
P-37-018079		Historic	Single family property	1983 (Donald A Cotton Associates); 1999 (CHRIS)
P-37-018080		Historic	Single family property	1983 (Donald A Cotton Associates); 1999 (CHRIS)
P-37-018081		Historic	Ancillary building - barn	1983 (Donald A Cotton Associates); 1999 (CHRIS)
P-37-018082		Historic	Single family property	1983 (Donald A Cotton Associates); 1999 (CHRIS)
P-37-018083		Historic	Single family property	1983 (Donald A Cotton Associates); 1999 (CHRIS)
P-37-018084		Historic	Single family property	1983 (Donald A Cotton Associates); 1999 (CHRIS)
P-37-018085		Historic	Single family property	1983 (Donald A Cotton Associates); 1999 (CHRIS)
P-37-018086		Historic	Single family property	1983 (Donald A Cotton Associates); 1999 (CHRIS)
P-37-018087		Historic	Single family property	1983 (Donald A Cotton Associates); 1999 (CHRIS)
P-37-018088		Historic	Religious building - church	1983 (Donald A Cotton Associates); 1999 (CHRIS)
P-37-018117		Historic	Single family property	1983 (Donald A Cotton Associates); 1999 (CHRIS)
P-37-018118		Historic	Single family property	1983 (Donald A Cotton Associates); 1999 (CHRIS)
P-37-018119		Historic	Single family property	1983 (Donald A Cotton Associates); 1999 (CHRIS)
P-37-018120		Historic	Foundations - stairs	1983 (Donald A Cotton Associates); 1999 (CHRIS)
P-37-018121		Historic	Single family property	1983 (Donald A Cotton Associates); 1999 (CHRIS)
P-37-018122		Historic	Single family property	1983 (Donald A Cotton Associates); 1999 (CHRIS)
P-37-018123		Historic	Single family property	1983 (Donald A Cotton Associates); 1999 (CHRIS)
P-37-018124		Historic	Single family property	1983 (Donald A Cotton Associates); 1999 (CHRIS)
P-37-018125		Historic	Single family property	1983 (Donald A Cotton Associates); 1999 (CHRIS)
P-37-018126		Historic	Single family property	1983 (Donald A Cotton Associates); 1999 (CHRIS)
P-37-018127		Historic	Single family property	1983 (Donald A Cotton Associates); 1999 (CHRIS)
P-37-018128		Historic	Single family property	1983 (Donald A Cotton Associates); 1999 (CHRIS)
P-37-018129		Historic	Single family property	1983 (Donald A Cotton Associates); 1999 (CHRIS)
P-37-018130		Historic	Single family property	1983 (Donald A Cotton Associates); 1999 (CHRIS)
P-37-018131		Historic	Single family property	1983 (Donald A Cotton Associates); 1999 (CHRIS)
P-37-018132		Historic	Single family property	1983 (Donald A Cotton Associates); 1999 (CHRIS)
P-37-018133		Historic	Single family property	1983 (Donald A Cotton Associates); 1999 (CHRIS)
P-37-018134		Historic	Single family property	1983 (Donald A Cotton Associates); 1999 (CHRIS)
P-37-018135		Historic	Single family property	1983 (Donald A Cotton Associates); 1999 (CHRIS)
P-37-018136		Historic	Single family property	1983 (Donald A Cotton Associates); 1999 (CHRIS)
P-37-018137		Historic	Single family property	1983 (Donald A Cotton Associates); 1999 (CHRIS)
P-37-018138		Historic	Single family property	1983 (Donald A Cotton Associates); 1999 (CHRIS)
P-37-018139		Historic	Single family property	1983 (Donald A Cotton Associates); 1999 (CHRIS)
P-37-018140		Historic	Single family property	1983 (Donald A Cotton Associates); 1999 (CHRIS)
P-37-018141		Historic	Single family property	1983 (Donald A Cotton Associates); 1999 (CHRIS)
P-37-018142		Historic	Single family property	1983 (Donald A Cotton Associates); 1999 (CHRIS)

Table 1
Previously Recorded Cultural Resources within One Mile of Project APE

Primary Number	Trinomial	Period	Site Type	Recording Events
P-37-018711		Historic	Single family property	1983 (Donald A Cotton Associates); 2000 (CHRIS)
P-37-018712		Historic	Single family property	1983 (Donald A Cotton Associates); 2000 (CHRIS)
P-37-018713		Historic	Single family property	1983 (Donald A Cotton Associates); 2000 (CHRIS)
P-37-018714		Historic	Single family property	1983 (Donald A Cotton Associates); 2000 (CHRIS)
P-37-018715		Historic	Single family property	1983 (Donald A Cotton Associates); 2000 (CHRIS)
P-37-018716		Historic	Single family property	1983 (Donald A Cotton Associates); 2000 (CHRIS)
P-37-018717		Historic	Single family property	1983 (Donald A Cotton Associates); 2000 (CHRIS)
P-37-018718		Historic	Single family property	1983 (Donald A Cotton Associates); 2000 (CHRIS)
P-37-018719		Historic	Single family property	1983 (Donald A Cotton Associates); 2000 (CHRIS)
P-37-018720		Historic	Single family property	1983 (Donald A Cotton Associates); 2000 (CHRIS)
P-37-018721		Historic	Single family property	1983 (Donald A Cotton Associates); 2000 (CHRIS)
P-37-018722		Historic	Single family property	1983 (Donald A Cotton Associates); 2000 (CHRIS)
P-37-018723		Historic	Single family property	1983 (Donald A Cotton Associates); 2000 (CHRIS)
P-37-018724		Historic	Single family property	1983 (Donald A Cotton Associates); 2000 (CHRIS)
P-37-018725		Historic	Single family property	1983 (Donald A Cotton Associates); 2000 (CHRIS)
P-37-018726		Historic	Single family property	1983 (Donald A Cotton Associates); 2000 (CHRIS)
P-37-018727		Historic	Single family property	1983 (Donald A Cotton Associates); 2000 (CHRIS)
P-37-018728		Historic	Single family property	1983 (Donald A Cotton Associates); 2000 (CHRIS)
P-37-018729		Historic	Single family property	1983 (Donald A Cotton Associates); 2000 (CHRIS)
P-37-018730		Historic	Single family property	1983 (Donald A Cotton Associates); 2000 (CHRIS)
P-37-018737		Historic	Single family property	1983 (Donald A Cotton Associates); 2000 (CHRIS)
P-37-018744		Historic	Single family property	1983 (Donald A Cotton Associates); 2000 (CHRIS)
P-37-018765		Historic	Single family property	1983 (Donald A Cotton Associates); 2000 (CHRIS)
P-37-018766		Historic	Single family property	1983 (Donald A Cotton Associates); 2000 (CHRIS)
P-37-018767		Historic	Single family property	1983 (Donald A Cotton Associates); 2000 (CHRIS)
P-37-018768		Historic	Single family property	1983 (Donald A Cotton Associates); 2000 (CHRIS)
P-37-018769		Historic	Single family property	1983 (Donald A Cotton Associates); 2000 (CHRIS)
P-37-018770		Historic	Single family property	1983 (Donald A Cotton Associates); 2000 (CHRIS)
P-37-018771		Historic	Single family property	1983 (Donald A Cotton Associates); 2000 (CHRIS)
P-37-018772		Historic	Single family property	1983 (Donald A Cotton Associates); 2000 (CHRIS)
P-37-018773		Historic	Single family property	1983 (Donald A Cotton Associates); 2000 (CHRIS)
P-37-018774		Historic	Single family property	1983 (Donald A Cotton Associates); 2000 (CHRIS)
P-37-019300		Historic	1-3 story commercial building	1983 (Donald A Cotton Associates); 2002 (CHRIS)
P-37-019301		Historic	Single family property	1983 (Donald A Cotton Associates); 2002 (CHRIS)
P-37-019302		Historic	1-3 story commercial building	1983 (Donald A Cotton Associates); 2002 (CHRIS)
P-37-019303		Historic	Hotel/motel	1983 (Donald A Cotton Associates); 2002 (CHRIS)
P-37-019304		Historic	Single family property	1983 (Donald A Cotton Associates); 2002 (CHRIS)
P-37-019305		Historic	Single family property	1983 (Donald A Cotton Associates); 2002 (CHRIS)
P-37-019306		Historic	1-3 story commercial building	1983 (Donald A Cotton Associates); 2002 (CHRIS)
P-37-019307		Historic	Single family property	1983 (Donald A Cotton Associates); 2002 (CHRIS)
P-37-019308		Historic	Single family property	1983 (Donald A Cotton Associates); 2002 (CHRIS)
P-37-019309		Historic	Single family property	1983 (Donald A Cotton Associates); 2002 (CHRIS)
P-37-019310		Historic	1-3 story commercial building	1983 (Donald A Cotton Associates); 2002 (CHRIS)
P-37-019311		Historic	Single family property	1983 (Donald A Cotton Associates); 2002 (CHRIS)

Table 1 Previously Recorded Cultural Resources within One Mile of Project APE				
Primary Number	Trinomial	Period	Site Type	Recording Events
P-37-019312		Historic	Single family property	1983 (Diann Marsh, Donald A. Cotton Associates)
P-37-019313		Historic	Single family property	1983 (Diann Marsh, Donald A. Cotton Associates)
P-37-019314		Historic	Single family property	1983 (Diann Marsh, Donald A. Cotton Associates)
P-37-019315		Historic	Single family property	1983 (Diann Marsh, Donald A. Cotton Associates)
P-37-019316		Historic	Religious building - church	1983 (Diann Marsh, Donald A. Cotton Associates)
P-37-019319		Historic	Single family property; Trees/vegetation; Walls/gates/fences	1983 (Diann Marsh, Donald A. Cotton Associates); 2017 (Laura Taylor Kung, ASM Affiliates, Inc.)
P-37-019320		Historic	Single family property	1983 (Diann Marsh, Donald A. Cotton Associates)
P-37-019331		Historic	Single family property	1983 (Donald A Cotton Associates); 2002 (CHRIS)
P-37-019332		Historic	Single family property	1983 (Donald A Cotton Associates); 2002 (CHRIS)
P-37-019343		Historic	Single family property	1983 (Donald A Cotton Associates); 2002 (CHRIS)
P-37-019344		Historic	Single family property	1983 (Donald A Cotton Associates); 2002 (CHRIS)
P-37-019345		Historic	Single family property	1983 (Donald A Cotton Associates); 2002 (CHRIS)
P-37-019346		Historic	Single family property	1983 (Donald A Cotton Associates); 2002 (CHRIS)
P-37-019347		Historic	Single family property	1983 (Donald A Cotton Associates); 2002 (CHRIS)
P-37-019420		Historic	Single family property	1983 (Donald A Cotton Associates); 2002 (CHRIS)
P-37-019421		Historic	Single family property	1983 (Donald A Cotton Associates); 2002 (CHRIS)
P-37-019422		Historic	Single family property	1983 (Donald A Cotton Associates); 2002 (CHRIS)
P-37-019423		Historic	Single family property	1983 (Donald A Cotton Associates); 2002 (CHRIS)
P-37-019424		Historic	Single family property	1983 (Donald A Cotton Associates); 2002 (CHRIS)
P-37-019425		Historic	Single family property	1983 (Donald A Cotton Associates); 2002 (CHRIS)
P-37-019426		Historic	Single family property	1983 (Donald A Cotton Associates); 2002 (CHRIS)
P-37-019427		Historic	Single family property	1983 (Donald A Cotton Associates); 2002 (CHRIS)
P-37-019428		Historic	Single family property	1983 (Donald A Cotton Associates); 2002 (CHRIS)
P-37-019429		Historic	Single family property	1983 (Donald A Cotton Associates); 2002 (CHRIS)
P-37-019430		Historic	Single family property	1983 (Donald A Cotton Associates); 2002 (CHRIS)
P-37-019431		Historic	Single family property	1983 (Donald A Cotton Associates); 2002 (CHRIS)
P-37-019432		Historic	Single family property	1983 (Donald A Cotton Associates); 2002 (CHRIS)
P-37-019433		Historic	Single family property	1983 (Donald A Cotton Associates); 2002 (CHRIS)
P-37-019434		Historic	Single family property	1983 (Donald A Cotton Associates); 2002 (CHRIS)
P-37-019435		Historic	Single family property	1983 (Donald A Cotton Associates); 2002 (CHRIS)
P-37-019441		Historic	Single family property	1983 (Donald A Cotton Associates); 2002 (CHRIS)
P-37-019442		Historic	Single family property	1983 (Diann Marsh, Donald A. Cotton Associates)
P-37-019443		Historic	Educational building - high school building; Religious building - church outbuilding	1983 (Diann Marsh, Donald A. Cotton Associates)
P-37-019444		Historic	Educational building - high school building; Religious building - church outbuilding	1983 (Diann Marsh, Donald A. Cotton Associates)
P-37-019445		Historic	Educational building - high school building; Religious building - church outbuilding	1983 (Diann Marsh, Donald A. Cotton Associates)

Table 1 Previously Recorded Cultural Resources within One Mile of Project APE				
Primary Number	Trinomial	Period	Site Type	Recording Events
P-37-019446		Historic	Educational building - high school building; Religious building - church outbuilding	1983 (Diann Marsh, Donad A. Cotton Associates)
P-37-019447		Historic	Single family property	1983 (Donald A Cotton Associates); 2002 (CHRIS)
P-37-019448		Historic	Single family property	1983 (Donald A Cotton Associates); 2002 (CHRIS)
P-37-019449		Historic	Single family property	1983 (Donald A Cotton Associates); 2002 (CHRIS)
P-37-019450		Historic	Single family property	1983 (Donald A Cotton Associates); 2002 (CHRIS)
P-37-019451		Historic	Single family property	1983 (Donald A Cotton Associates); 2002 (CHRIS)
P-37-019452		Historic	Single family property	1983 (Donald A Cotton Associates); 2002 (CHRIS)
P-37-019453		Historic	Single family property	1983 (Donald A Cotton Associates); 2002 (CHRIS)
P-37-019457		Historic	Single family property	1983 (Donald A Cotton Associates); 2002 (CHRIS)
P-37-019459		Historic	Single family property	1983 (Donald A Cotton Associates); 2002 (CHRIS)
P-37-019460		Historic	Single family property	1983 (Donald A Cotton Associates); 2002 (CHRIS)
P-37-019461		Historic	Single family property	1983 (Donald A Cotton Associates); 2002 (CHRIS)
P-37-019462		Historic	Single family property	1983 (Donald A Cotton Associates); 2002 (CHRIS)
P-37-019476		Historic	Single family property	1983 (Donald A Cotton Associates); 2002 (CHRIS)
P-37-019477		Historic	Religious building - church	1983 (Donald A Cotton Associates); 2002 (CHRIS)
P-37-019478		Historic	Religious building - church	1983 (Donald A Cotton Associates); 2002 (CHRIS)
P-37-019479		Historic	Religious building - church	1983 (Donald A Cotton Associates); 2002 (CHRIS)
P-37-019480		Historic	Religious building - church	1983 (Donald A Cotton Associates); 2002 (CHRIS)
P-37-019481		Historic	Single family property	1983 (Donald A Cotton Associates); 2002 (CHRIS)
P-37-019482		Historic	Single family property	1983 (Donald A Cotton Associates); 2002 (CHRIS)
P-37-019483		Historic	Single family property	1983 (Donald A Cotton Associates); 2002 (CHRIS)
P-37-019484		Historic	Single family property	1983 (Donald A Cotton Associates); 2002 (CHRIS)
P-37-019485		Historic	Single family property	1983 (Donald A Cotton Associates); 2002 (CHRIS)
P-37-019486		Historic	Single family property	1983 (Donald A Cotton Associates); 2002 (CHRIS)
P-37-019488		Historic	Single family property	1983 (Donald A Cotton Associates); 2002 (CHRIS)
P-37-019489		Historic	Single family property	1983 (Donald A Cotton Associates); 2002 (CHRIS)
P-37-019490		Historic	Single family property	1983 (Donald A Cotton Associates); 2002 (CHRIS)
P-37-019491		Historic	Single family property	1983 (Donald A Cotton Associates); 2002 (CHRIS)
P-37-019492		Historic	Single family property	1983 (Donald A Cotton Associates); 2002 (CHRIS)
P-37-019493		Historic	Single family property	1983 (Donald A Cotton Associates); 2002 (CHRIS)
P-37-019494		Historic	Single family property	1983 (Donald A Cotton Associates); 2002 (CHRIS)
P-37-019495		Historic	Single family property	1983 (Donald A Cotton Associates); 2002 (CHRIS)
P-37-019496		Historic	Single family property	1983 (Donald A Cotton Associates); 2002 (CHRIS)
P-37-019497		Historic	Single family property	1983 (Donald A Cotton Associates); 2002 (CHRIS)
P-37-019498		Historic	Single family property	1983 (Donald A Cotton Associates); 2002 (CHRIS)
P-37-019499		Historic	Single family property	1983 (Donald A Cotton Associates); 2002 (CHRIS)
P-37-019500		Historic	Single family property	1983 (Donald A Cotton Associates); 2002 (CHRIS)
P-37-019501		Historic	Single family property	1983 (Donald A Cotton Associates); 2002 (CHRIS)
P-37-019502		Historic	Single family property	1983 (Donald A Cotton Associates); 2002 (CHRIS)
P-37-019503		Historic	Single family property	1983 (Donald A Cotton Associates); 2002 (CHRIS)
P-37-019504		Historic	Single family property	1983 (Donald A Cotton Associates); 2002 (CHRIS)

Table 1 Previously Recorded Cultural Resources within One Mile of Project APE				
Primary Number	Trinomial	Period	Site Type	Recording Events
P-37-019505		Historic	Single family property	1983 (Donald A Cotton Associates); 2002 (CHRIS)
P-37-019506		Historic	Single family property	1983 (Donald A Cotton Associates); 2002 (CHRIS)
P-37-019507		Historic	Single family property	1983 (Donald A Cotton Associates); 2002 (CHRIS)
P-37-019508		Historic	Single family property	1983 (Donald A Cotton Associates); 2002 (CHRIS)
P-37-019512		Historic	Single family property	1983 (Donald A Cotton Associates); 2002 (CHRIS)
P-37-019513		Historic	Single family property	1983 (Donald A Cotton Associates); 2002 (CHRIS)
P-37-019514		Historic	Single family property	1983 (Donald A Cotton Associates); 2002 (CHRIS)
P-37-019515		Historic	Single family property	1983 (Donald A Cotton Associates); 2002 (CHRIS)
P-37-019516		Historic	Single family property	1983 (Donald A Cotton Associates); 2002 (CHRIS)
P-37-019541		Historic	Single family property	1983 (Donald A Cotton Associates); 2002 (CHRIS)
P-37-019542		Historic	Single family property	1983 (Donald A Cotton Associates); 2002 (CHRIS)
P-37-019543		Historic	Single family property	1983 (Donald A Cotton Associates); 2002 (CHRIS)
P-37-019544		Historic	Single family property	1983 (Donald A Cotton Associates); 2002 (CHRIS)
P-37-019545		Historic	Single family property	1983 (Donald A Cotton Associates); 2002 (CHRIS)
P-37-019546		Historic	Single family property	1983 (Donald A Cotton Associates); 2002 (CHRIS)
P-37-019547		Historic	Single family property	1983 (Donald A Cotton Associates); 2002 (CHRIS)
P-37-019548		Historic	Single family property	1983 (Donald A Cotton Associates); 2002 (CHRIS)
P-37-019549		Historic	Single family property	1983 (Donald A Cotton Associates); 2002 (CHRIS)
P-37-019550		Historic	Single family property	1983 (Donald A Cotton Associates); 2002 (CHRIS)
P-37-019551		Historic	Single family property	1983 (Donald A Cotton Associates); 2002 (CHRIS)
P-37-019552		Historic	Single family property	1983 (Donald A Cotton Associates); 2002 (CHRIS)
P-37-019553		Historic	Single family property	1983 (Donald A Cotton Associates); 2002 (CHRIS)
P-37-019554		Historic	Single family property	1983 (Donald A Cotton Associates); 2002 (CHRIS)
P-37-019555		Historic	Single family property	1983 (Donald A Cotton Associates); 2002 (CHRIS)
P-37-019556		Historic	Single family property	1983 (Donald A Cotton Associates); 2002 (CHRIS)
P-37-019575		Historic	Single family property	1983 (Donald A Cotton Associates); 2002 (CHRIS)
P-37-019577		Historic	Single family property	1983 (Donald A Cotton Associates); 2002 (CHRIS)
P-37-019578		Historic	Single family property	1983 (Donald A Cotton Associates); 2002 (CHRIS)
P-37-019579		Historic	Single family property	1983 (Donald A Cotton Associates); 2002 (CHRIS)
P-37-019580		Historic	Single family property	1983 (Donald A Cotton Associates); 2002 (CHRIS)
P-37-019612		Historic	Single family property	1983 (Donald A Cotton Associates); 2002 (CHRIS)
P-37-019613		Historic	Single family property	1983 (Donald A Cotton Associates); 2002 (CHRIS)
P-37-019614		Historic	Single family property	1983 (Donald A Cotton Associates); 2002 (CHRIS)
P-37-019615		Historic	Single family property	1983 (Donald A Cotton Associates); 2002 (CHRIS)
P-37-019616		Historic	Single family property	1983 (Donald A Cotton Associates); 2002 (CHRIS)
P-37-019630		Historic	Single family property	1983 (Donald A Cotton Associates); 2002 (CHRIS)
P-37-019631		Historic	Single family property	1983 (Donald A Cotton Associates); 2002 (CHRIS)
P-37-019681		Historic	Single family property	1983 (Donald A Cotton Associates); 2002 (CHRIS)
P-37-019682		Historic	Single family property	1983 (Donald A Cotton Associates); 2002 (CHRIS)
P-37-019683		Historic	Single family property	1983 (Donald A Cotton Associates); 2002 (CHRIS)
P-37-025682	CA-SDI-017081	Historic	Mines/quarries/taillings	2004 (F. Lorey, Historical Arch. Svs.)
P-37-025929		Prehistoric	Isolate - hammerstone	2004 (Affinis)
P-37-026360		Historic	Single family property	2005 (Tierra Environmental)
P-37-028195		Historic	Single family property	2007 (Legacy 106 Inc.)
P-37-028386		Historic	Single family property	1983 (Donald A Cotton Associates); 2007 (Department of Parks and Recreation)
P-37-033534	CA-SDI-021079	Prehistoric	Bedrock milling feature	2014 (AECOM)

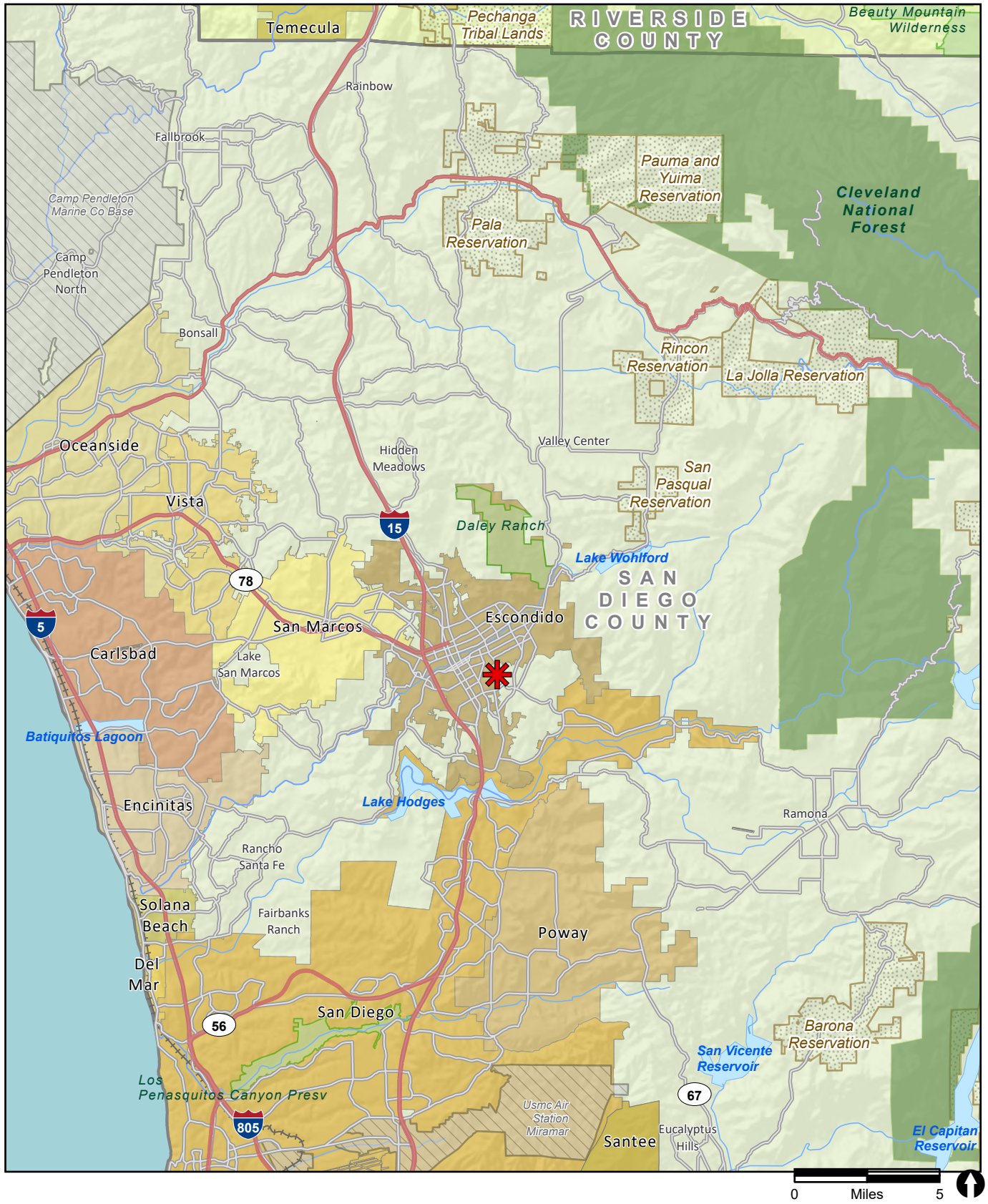
Table 1 Previously Recorded Cultural Resources within One Mile of Project APE				
Primary Number	Trinomial	Period	Site Type	Recording Events
P-37-033557		Historic	Roads/trails/railroad grades; Highway/trail	2013 (Larry Tift, ASM Affiliates, Inc.); 2015 (Kent Manchen, Matt DeCarlo, ASM Affiliates, Inc.); 2017 (Haley Chateene, PanGIS); 2017 (A. Foglia, K. Keckeisen, PanGIS, Inc.); 2018 (Sarah Stringer-Bowsher, ASM Affiliates, Inc.); 2021 (ASM Affiliates, Inc.)
P-37-035182		Historic	Religious building - church	2013 (Crawford Historic Services)
P-37-035581		Historic	Single family property	2016 (ASM Affiliates, Inc.)
P-37-037734	CA-SDI-022477	Historic	Foundation	2015 (ASM Affiliates, Inc.)
P-37-039124		Historic	1-3 story commercial building	2020 (Brian F. Smith & Associates)
P-37-040392		Historic	1-3 story commercial building	2021 (T. Meiser, AECOM)

Bold = Occurs within project APE

ATTACHMENTS

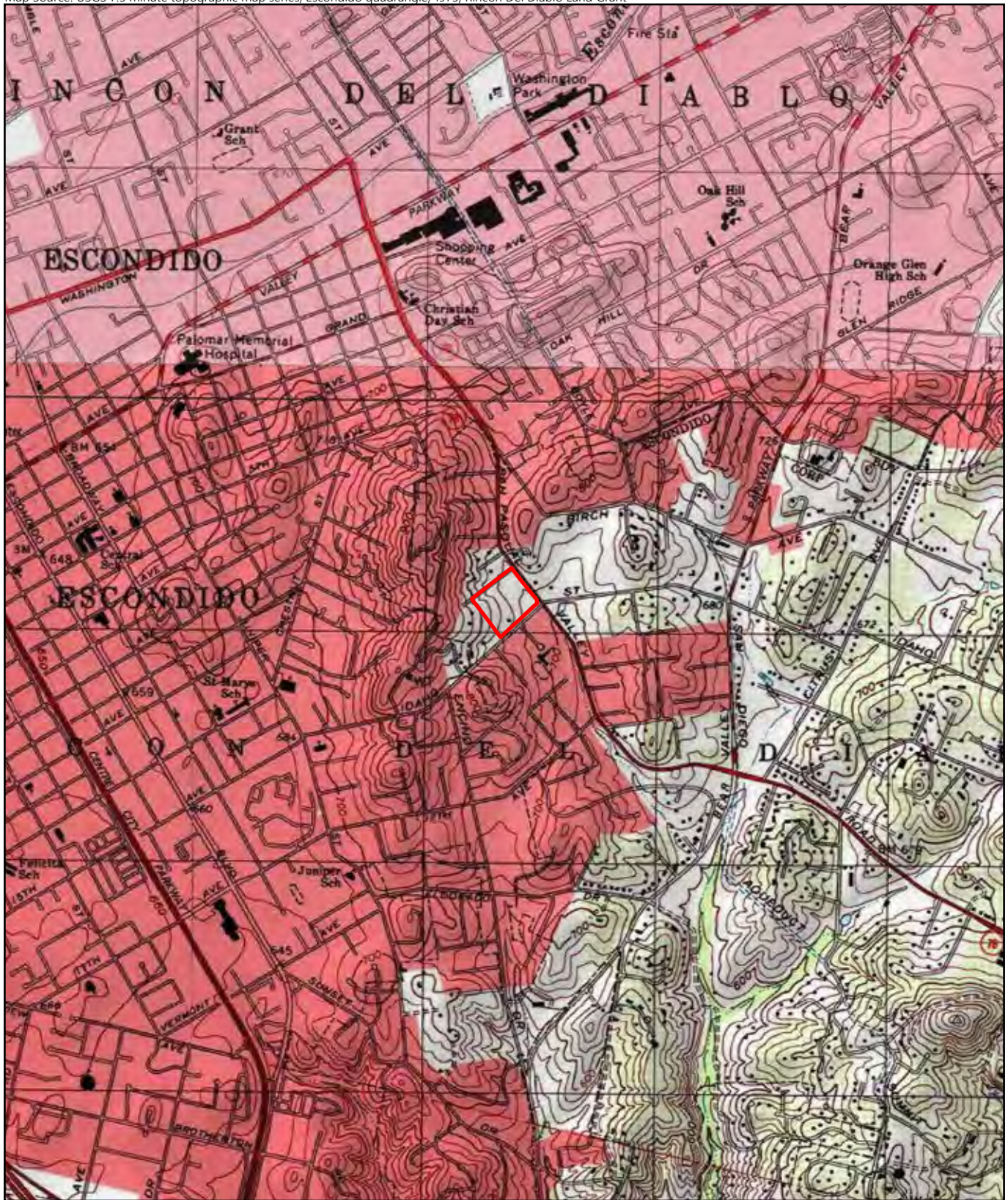
ATTACHMENT 1

Figures

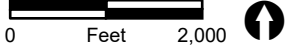


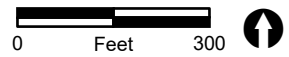
 Project Location

FIGURE 1
Regional Location



 Project Boundary





 Project Boundary

ATTACHMENT 2

Native American Heritage Commission Correspondence

NATIVE AMERICAN HERITAGE COMMISSION

August 16, 2024

Carmen Zepeda-Herman
RECON Environmental, Inc.

Via Email to: czepeda@reconenvironmental.com

Re: Pasqual Heights Project, San Diego County

Dear Ms. Zepeda-Herman:

A record search of the Native American Heritage Commission (NAHC) Sacred Lands File (SLF) was completed for the information you have submitted for the above referenced project. The results were positive. Please contact the tribes on the attached list for more information. Other sources of cultural resources should also be contacted for information regarding known and recorded sites.

Attached is a list of Native American tribes who may also have knowledge of cultural resources in the project area. This list should provide a starting place in locating areas of potential adverse impact within the proposed project area. I suggest you contact all of those indicated; if they cannot supply information, they might recommend others with specific knowledge. By contacting all those listed, your organization will be better able to respond to claims of failure to consult with the appropriate tribe. If a response has not been received within two weeks of notification, the Commission requests that you follow-up with a telephone call or email to ensure that the project information has been received.

If you receive notification of change of addresses and phone numbers from tribes, please notify me. With your assistance, we can assure that our lists contain current information.

If you have any questions or need additional information, please contact me at my email address: Pricilla.Torres-Fuentes@nahc.ca.gov.

Sincerely,

Pricilla Torres-Fuentes

Pricilla Torres-Fuentes
Cultural Resources Analyst

Attachment



CHAIRPERSON
Reginald Pagaling
Chumash

VICE-CHAIRPERSON
Buffy McQuillen
Yokayo Pomo, Yuki,
Nomlaki

SECRETARY
Sara Dutschke
Miwok

PARLIAMENTARIAN
Wayne Nelson
Luiseño

COMMISSIONER
Isaac Bojorquez
Ohlone-Costanoan

COMMISSIONER
Stanley Rodriguez
Kumeyaay

COMMISSIONER
Laurena Bolden
Serrano

COMMISSIONER
Reid Milanovich
Cahuilla

COMMISSIONER
Bennae Calac
Pauma-Yuima Band of
Luiseño Indians

EXECUTIVE SECRETARY
**Raymond C.
Hitchcock**
Miwok, Nisenan

NAHC HEADQUARTERS
1550 Harbor Boulevard
Suite 100
West Sacramento,

Native American Heritage Commission
Native American Contact List
San Diego County
8/16/2024

County	Tribe Name	Fed (F) Non-Fed (N)	Contact Person	Contact Address	Phone #	Fax #	Email Address	Cultural Affiliation	Counties	Last Updated
San Diego	Barona Group of the Capitan Grande	F	Art Bunce, Attorney		(760) 489-0329		buncelaw@aol.com	Diegueno	Imperial,San Diego	7/25/2023
	Campo Band of Diegueno Mission Indians	F	Ben Dyché, Vice Chairperson	36190 Church Road, Suite 1 Campo, CA, 91906	(619) 478-9046		bdyche@campo-nsn.gov	Diegueno	Imperial,San Diego	5/24/2024
	Campo Band of Diegueno Mission Indians	F	Daniel Tsosie, THPO	36190 Church Road, Suite 1 Campo, CA, 91906	(619) 760-6480		dtsoseie@campo-nsn.gov	Diegueno	Imperial,San Diego	5/24/2024
	Campo Band of Diegueno Mission Indians	F	Marcus Cuero, Chairperson	36190 Church Road, Suite 1 Campo, CA, 91906	(619) 478-9046		marcuscuero@campo-nsn.gov	Diegueno	Imperial,San Diego	5/15/2024
	Ewilaapaayp Band of Kumeyaay Indians	F	Robert Pinto, Chairperson	4054 Willows Road Alpine, CA, 91901	(619) 368-4382	(619) 445-9126	ceo@ebkl-nsn.gov	Diegueno	Imperial,San Diego	
	Ewilaapaayp Band of Kumeyaay Indians	F	Michael Garcia, Vice Chairperson	4054 Willows Road Alpine, CA, 91901	(619) 933-2200	(619) 445-9126	michaelg@leaningrock.net	Diegueno	Imperial,San Diego	
	Iipay Nation of Santa Ysabel	F	Clint Linton, Director of Cultural Resources	P.O. Box 507 Santa Ysabel, CA, 92070	(760) 803-5694		clinton@redtailenvironmental.com	Diegueno	Imperial,San Diego	11/30/2023
	Inaja-Cosmit Band of Indians	F	Rebecca Osuna, Chairperson	2005 S. Escondido Blvd. Escondido, CA, 92025	(760) 737-7628	(760) 747-8568		Diegueno	Imperial,San Diego	
	Jamul Indian Village	F	Erica Pinto, Chairperson	P.O. Box 612 Jamul, CA, 91935	(619) 669-4785	(619) 669-4817	epinto@jiv-nsn.gov	Diegueno	Imperial,San Diego	
	Jamul Indian Village	F	Lisa Cumper, Tribal Historic Preservation Officer	P.O. Box 612 Jamul, CA, 91935	(619) 669-4855		lcumper@jiv-nsn.gov	Diegueno	Imperial,San Diego	9/5/2018
	La Posta Band of Diegueno Mission Indians	F	Gwendolyn Parada, Chairperson	8 Crestwood Road Boulevard, CA, 91905	(619) 478-2113	(619) 478-2125	LP13boots@aol.com	Diegueno	Imperial,San Diego	
	Manzanita Band of Kumeyaay Nation	F	Angela Elliott Santos, Chairperson	P.O. Box 1302 Boulevard, CA, 91905	(619) 766-4930	(619) 766-4957		Diegueno	Imperial,San Diego	
	Mesa Grande Band of Diegueno Mission Indians	F	Michael Linton, Chairperson	P.O. Box 270 Santa Ysabel, CA, 92070	(760) 782-3818	(760) 782-9092	mesagrandeband@msn.com	Diegueno	Imperial,San Diego	
	Pala Band of Mission Indians	F	Christopher Nejo, Legal Analyst/Researcher	PMB 50, 35008 Pala Temecula Road Pala, CA, 92059	(760) 891-3564		cnejo@palatribe.com	Cupeno Luiseno	Orange,Riverside,San Bernardino,San Diego	11/27/2023
	Pala Band of Mission Indians	F	Shaeta Gaughen, Tribal Historic Preservation Officer	PMB 50, 35008 Pala Temecula Road Pala, CA, 92059	(760) 891-3515		sgaughen@palatribe.com	Cupeno Luiseno	Orange,Riverside,San Bernardino,San Diego	11/27/2023
	Pala Band of Mission Indians	F	Alexis Wallick, Assistant THPO	PMB 50, 35008 Pala Temecula Road Pala, CA, 92059	(760) 891-3537		awallick@palatribe.com	Cupeno Luiseno	Orange,Riverside,San Bernardino,San Diego	11/27/2023
	Pechanga Band of Indians	F	Tuba Ebru Ozdil, Pechanga Cultural Analyst	P.O. Box 2183 Temecula, CA, 92593	(951) 770-6313	(951) 695-1778	eeozdil@pechanga-nsn.gov	Luiseno	Los Angeles,Orange,Riverside,San Bernardino,San Diego,Santa Barbara,Ventura	8/2/2023
	Pechanga Band of Indians	F	Steve Bodmer, General Counsel for Pechanga Band of Indians	P.O. Box 1477 Temecula, CA, 92593	(951) 770-6171	(951) 695-1778	sbodmer@pechanga-nsn.gov	Luiseno	Los Angeles,Orange,Riverside,San Bernardino,San Diego,Santa Barbara,Ventura	8/2/2023
	Rincon Band of Luiseno Indians	F	Laurie Gonzalez, Tribal Council/Culture Committee Member	One Government Center Lane Valley Center, CA, 92082	(760) 484-4835		lgonzalez@rincon-nsn.gov	Luiseno	Los Angeles,Orange,Riverside,San Bernardino,San Diego,Santa Barbara,Ventura	5/31/2023
	Rincon Band of Luiseno Indians	F	Denise Turner Walsh, Attorney General	One Government Center Lane Valley Center, CA, 92082	(760) 689-5727		dwalsh@rincon-nsn.gov	Luiseno	Los Angeles,Orange,Riverside,San Bernardino,San Diego,Santa Barbara,Ventura	7/7/2023
	Rincon Band of Luiseno Indians	F	Cheryl Madrigal, Cultural Resources Manager/Tribal Historic Preservation Officer	One Government Center Lane Valley Center, CA, 92082	(760) 648-3000		cmadrigal@rincon-nsn.gov	Luiseno	Los Angeles,Orange,Riverside,San Bernardino,San Diego,Santa Barbara,Ventura	5/31/2023
	Rincon Band of Luiseno Indians	F	Joseph Linton, Tribal Council/Culture Committee Member	One Government Center Lane Valley Center, CA, 92082	(760) 803-3548		jilinton@rincon-nsn.gov	Luiseno	Los Angeles,Orange,Riverside,San Bernardino,San Diego,Santa Barbara,Ventura	5/31/2023
	San Luis Rey Band of Mission Indians	N	Carmen Mojado, Secretary of Government Affairs	1889 Sunset Drive Vista, CA, 92083	(760) 724-8505	(760) 724-2172	cjmjado@salmisionindians.org	Luiseno	Orange,Riverside,San Diego	4/15/2024
	San Pasqual Band of Diegueno Mission Indians	F	Allen Lawson, Chairperson	P.O. Box 365 Valley Center, CA, 92082	(760) 749-3200	(760) 749-3876	allen@sanpasqualtribe.org	Diegueno	Imperial,San Diego	
	San Pasqual Band of Diegueno Mission Indians	F	John Flores, Environmental Coordinator	P. O. Box 365 Valley Center, CA, 92082	(760) 749-3200	(760) 749-3876	johnf@sanpasqualtribe.org	Diegueno	Imperial,San Diego	8/16/2016
	Soboba Band of Luiseno Indians	F	Joseph Ontiveros, Tribal Historic Preservation Officer	P.O. Box 487 San Jacinto, CA, 92581	(951) 663-5279	(951) 654-4198	jontiveros@soboba-nsn.gov	Cahuilla Luiseno	Imperial,Los Angeles,Orange,Riverside,San Bernardino,San Diego	7/14/2023
	Soboba Band of Luiseno Indians	F	Jessica Valdez, Cultural Resource Specialist	P.O. Box 487 San Jacinto, CA, 92581	(951) 663-6261	(951) 654-4198	jvaldez@soboba-nsn.gov	Cahuilla Luiseno	Imperial,Los Angeles,Orange,Riverside,San Bernardino,San Diego	7/14/2023
	Sycuan Band of the Kumeyaay Nation	F	Cody Martinez, Chairman	Sycuan Tribal Office: 1 Kwaaypaay Court El Cajon, CA, 92019	(619) 445-2613		cmartinez@sycuan-nsn.gov	Kumeyaay	Imperial,San Diego	8/7/2023
	Sycuan Band of the Kumeyaay Nation	F	Barrice Paipa, Cultural Resource Specialist	Sycuan Cultural Center: 910 Willow Glen Drive El Cajon, CA, 92019	(619) 445-6917		bpaiipa2@sycuan-nsn.gov	Kumeyaay	Imperial,San Diego	8/7/2023
	Viejas Band of Kumeyaay Indians	F	Ray Teran, Resource Management Director	1 Viejas Grade Road Alpine, CA, 91901	(619) 659-2312		rteran@viejas-nsn.gov	Kumeyaay	Imperial,San Diego	6/29/2023
	Viejas Band of Kumeyaay Indians	F	Ernest Pingleton, THPO	1 Viejas Grade Road Alpine, CA, 91901	(619) 445-3810		epingleton@viejas-nsn.gov	Kumeyaay	Imperial,San Diego	6/29/2023

Native American Heritage Commission
Native American Contact List
San Diego County
8/16/2024

This list is current only as of the date of this document. Distribution of this list does not relieve any person of statutory responsibility as defined in Section 7050.5 of the Health and Safety Code, Section 5097.94 of the Public Resource Section 5097.98 of the Public Resources Code.

This list is only applicable for contacting local Native Americans with regard to cultural resources assessment for the proposed Pasqual Heights Project, San Diego County.

Record: PRD1-2024-004210
Report Type: List of Tribes
Counties: San Diego
NAHC Group: All

ATTACHMENT 3

Tribal Scoping Letters and Tribal Responses



An Employee-Owned Company

October 1, 2024

Reference: Cultural Resources Survey for the Pasqual Heights Project, Escondido, San Diego County, California
(RECON Number 10597)

Dear Native American Tribal Representative:

RECON Environmental, Inc. (RECON) has been tasked to conduct a cultural resources survey for the Pasqual Heights Project (project) located at 830 Idaho Avenue, in the county of San Diego and adjacent to the city of Escondido (City), within the City's sphere of influence. The project area occurs within an unsectioned portion of the Rincon Del Diablo Land Grant, of the U.S. Geological Survey (USGS) 7.5-minute series, Escondido quadrangle (see attached figure). The project proposes the construction of 42 single-family housing units on a 10.35-acre parcel (Assessor Parcel Number 234-160-25-00). The project area currently exhibits one single-family residence. The project intends to utilize Density Bonus Law as updated by Assembly Bill 1287 to increase the density to 42 lots by reserving 29 percent (7 lots) of the base density units for very low and moderate income households, as follows: 15 percent of the base density (4 lots) reserved for very low income households plus an additional 14 percent of the base density (3 lots) reserved for moderate income households.

A letter requesting identification of spiritually significant and sacred sites or traditional use areas in the proposed project vicinity was sent to the Native American Heritage Commission. The search results were positive. Additionally, a records search was conducted of the archaeological databases maintained at the California Historical Resources Information System, South Coastal Information Center at San Diego State University. The files at the South Coastal Information Center indicate one multicomponent archaeological site recorded within the proposed project area; the site consists of one metavolcanic flake, one marine shell fragment, one single-family property, a concrete reservoir, and several fieldstone walls. A RECON archaeologist accompanied by a Luiseño Native American monitor surveyed the project area; no previously recorded prehistoric resources were observed and no prehistoric resources were observed.

Pursuant to the letter received in response from the Native American Heritage Commission, we are contacting you as a potentially interested party. We would like to know if you have any concerns regarding the project as it relates to Native American issues or interests. Would you have any information on sacred sites in the vicinity of the project that may help us advise the client to avoid impacts to these sites? We would like to obtain Native American input early enough in the environmental process to ensure adequate time to address any concerns you may have.

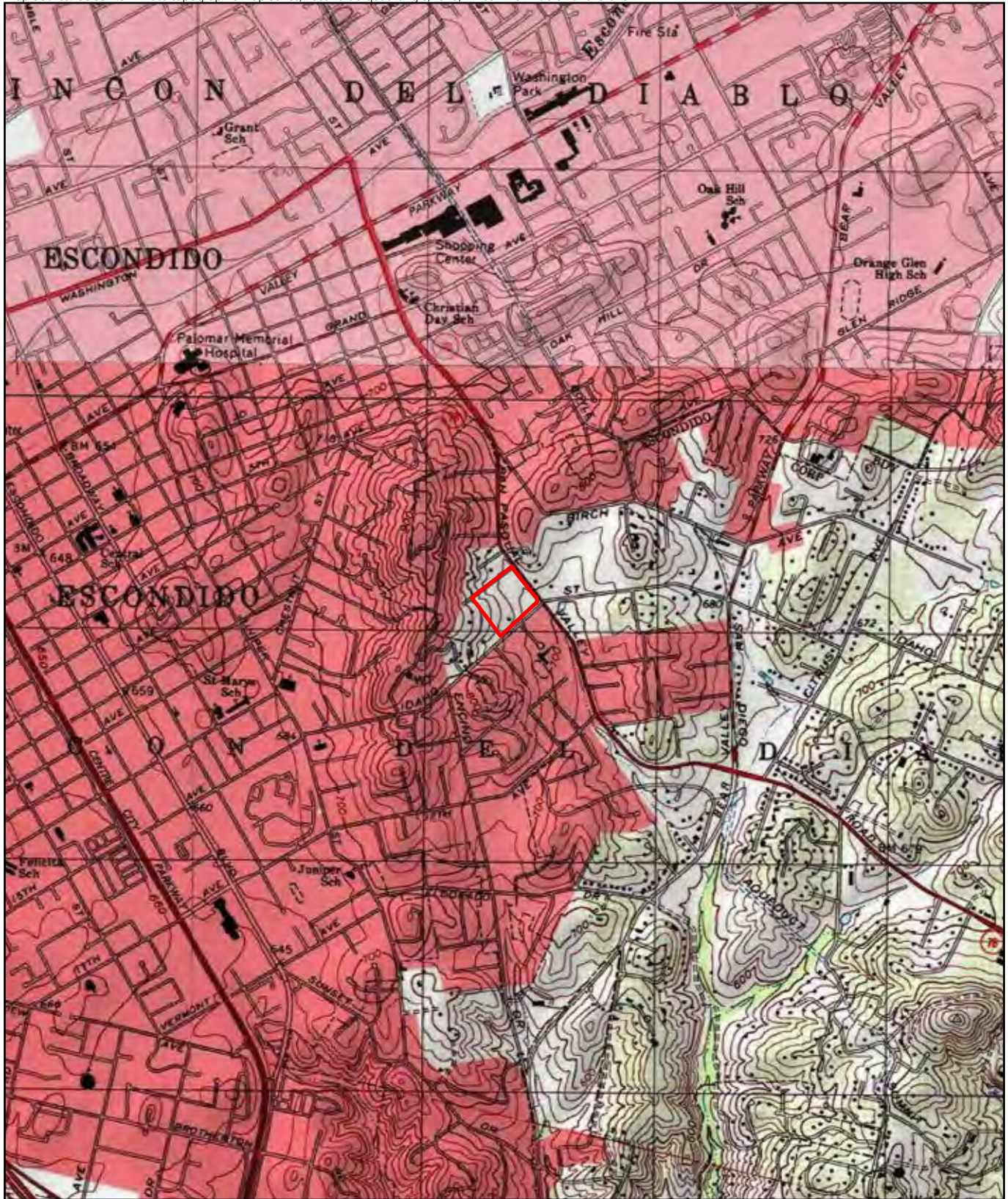
We would also appreciate any referrals to another Tribe or person knowledgeable about the cultural resources within or adjacent to the project area that may be of help in the planning process with regard to Native American concerns. If you have questions, comments, or concerns, please contact me at 619-308-9333 extension 133 or by e-mail at czepeda@reconenvironmental.com. If we have not heard from you by October 29, 2024, we will assume that you have no comments. Thank you for your assistance.

Sincerely,

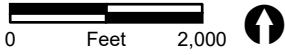
A handwritten signature in black ink that reads "Carmen Zepeda-Herman". The signature is written in a cursive, flowing style.

Carmen Zepeda-Herman
Principal Investigator

Attachment



 Project Boundary



Carmen Zepeda-Herman

From: Erica M. Pinto <epinto@jiv-nsn.gov>
Sent: Tuesday, October 1, 2024 7:35 PM
To: Stacey Higgins
Cc: Carmen Zepeda-Herman
Subject: [External] Re: Cultural Resources Survey for the Pasqual Heights Project, Escondido, San Diego County, California (RECON Number 10597)

Hi Stacey,

We kindly defer to the Tribes up in the Escondido area, San Pasqual, Santa Ysabel, Rincon, Pauma, Pala etc.

Thank you.

EMP

On Tue, Oct 1, 2024 at 3:44 PM Stacey Higgins <shiggins@reconenvironmental.com> wrote:

Attached is a PDF regarding the following project: [Cultural Resources Survey for the Pasqual Heights Project, Escondido, San Diego County, California](#)

Please contact Carmen Zepeda-Herman (czepeda@reconenvironmental.com; 619-308-9333 extension 133) with any questions or comments.

Stacey Higgins

Senior Production Specialist



RECON Environmental, Inc.
3111 Camino del Rio North, Suite 600

San Diego, CA 92108-5726

(619) 308-9333 ext. 127

CA SB | SBA SB

[Website](#) | [Instagram](#) | [Facebook](#) | [LinkedIn](#)

--

Respectfully,



Erica M. Pinto

Chairwoman

P. O. Box 612, Jamul, CA 91935

office: 619.669.4785

direct: 619.669.4850

fax: 619.669.4817

email: epinto@jiv-nsn.gov

web: www.jamulindianvillage.com

Nathanial Yerka

From: Stacey Higgins
Sent: Tuesday, October 1, 2024 3:55 PM
To: Carmen Zepeda-Herman
Cc: Nathanial Yerka
Subject: FW: [External] RE: Cultural Resources Survey for the Pasqual Heights Project, Escondido, San Diego County, California (RECON Number 10597)

FYI.

From: Ray Teran <rteran@viejas-nsn.gov>
Sent: Tuesday, October 1, 2024 3:50 PM
To: Stacey Higgins <shiggins@reconenvironmental.com>; Carmen Zepeda-Herman <czepeda@reconenvironmental.com>
Cc: Ernest Pingleton <epingleton@viejas-nsn.gov>
Subject: [External] RE: Cultural Resources Survey for the Pasqual Heights Project, Escondido, San Diego County, California (RECON Number 10597)

The Viejas Band of Kumeyaay Indians (“Viejas”) has reviewed the proposed project and at this time we have determined that the project site has cultural significance or ties to Viejas. Cultural resources have been located within or adjacent to the APE-DE of the proposed project.

Viejas Band request that a Kumeyaay Cultural Monitor be on site for ground disturbing activities and to inform us of any new developments such as inadvertent discovery of cultural artifacts, cremation sites, or human remains.

If you wish to utilize Viejas cultural monitors (Viejas rate is \$54.15/hr. plus GSA mileage), please call Ernest Pingleton at 619-655-0410 or email, epingleton@viejas-nsn.gov, for contracting and scheduling. Thank you.

If a Tribe, having a closer proximity to the Project, requests to perform cultural monitoring, Viejas will differ to them.

From: Stacey Higgins <shiggins@reconenvironmental.com>
Sent: Tuesday, October 1, 2024 3:44 PM
To: Carmen Zepeda-Herman <czepeda@reconenvironmental.com>
Subject: Cultural Resources Survey for the Pasqual Heights Project, Escondido, San Diego County, California (RECON Number 10597)

Attached is a PDF regarding the following project: [Cultural Resources Survey for the Pasqual Heights Project, Escondido, San Diego County, California](#)

Please contact Carmen Zepeda-Herman (czepeda@reconenvironmental.com; 619-308-9333 extension 133) with any questions or comments.

Stacey Higgins
Senior Production Specialist



RECON Environmental, Inc.

3111 Camino del Rio North, Suite 600

San Diego, CA 92108-5726

(619) 308-9333 ext. 127

CA SB | SBA SB

[Website](#) | [Instagram](#) | [Facebook](#) | [LinkedIn](#)

Carmen Zepeda-Herman

From: Clint Linton <clint@redtailenvironmental.com>
Sent: Wednesday, October 2, 2024 1:54 PM
To: Carmen Zepeda-Herman
Subject: [External] Re: Cultural Resources Survey for the Pasqual Heights Project, Escondido, San Diego County, California (RECON Number 10597)
Attachments: image001.png

Hi Carmen. Please have a Kumeyaay nam for this survey. Thx!

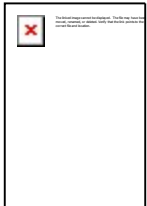
On Tue, Oct 1, 2024, 3:49 PM Stacey Higgins <shiggins@reconenvironmental.com> wrote:

Attached is a PDF regarding the following project: [Cultural Resources Survey for the Pasqual Heights Project, Escondido, San Diego County, California](#)

Please contact Carmen Zepeda-Herman (czepeda@reconenvironmental.com; 619-308-9333 extension 133) with any questions or comments.

Stacey Higgins

Senior Production Specialist



RECON Environmental, Inc.
[3111 Camino del Rio North, Suite 600](#)

[San Diego, CA 92108-5726](#)

(619) 308-9333 ext. 127

CA SB | SBA SB

Nathanial Yerka

From: Carmen Zepeda-Herman
Sent: Thursday, October 3, 2024 8:15 AM
To: Clint Linton
Cc: Nathanial Yerka
Subject: Cultural Resources Survey for the Pasqual Heights Project, Escondido, San Diego County, California (RECON Number 10597)

Hi Clint,

I wanted to let you know that this survey went forward with just a Luiseno monitor. Shuuluk and a new guy Jeremiah Kolb from Rincon participated with Nate. There is an old house on site and in the 1990s one shellfish fragment and one flake were found. None were visible during the survey. I think this was before we talked about having both Luiseno and Kumeyaay on Escondido area surveys. Moving forward I will make sure to have both monitors. Monitoring will be a recommended mitigation. Please let me know what you think.

Thanks.

Carmen

From: Carmen Zepeda-Herman
Sent: Wednesday, October 2, 2024 1:59 PM
To: Clint Linton <clint@redtailenvironmental.com>
Subject: Cultural Resources Survey for the Pasqual Heights Project, Escondido, San Diego County, California (RECON Number 10597)

Thanks Clint.

From: Clint Linton <clint@redtailenvironmental.com>
Sent: Wednesday, October 2, 2024 1:54 PM
To: Carmen Zepeda-Herman <czepeda@reconenvironmental.com>
Subject: [External] Re: Cultural Resources Survey for the Pasqual Heights Project, Escondido, San Diego County, California (RECON Number 10597)

Hi Carmen. Please have a Kumeyaay nam for this survey. Thx!

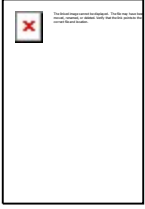
On Tue, Oct 1, 2024, 3:49 PM Stacey Higgins <shiggins@reconenvironmental.com> wrote:

Attached is a PDF regarding the following project: [Cultural Resources Survey for the Pasqual Heights Project, Escondido, San Diego County, California](#)

Please contact Carmen Zepeda-Herman (czepeda@reconenvironmental.com; 619-308-9333 extension 133) with any questions or comments.

Stacey Higgins

Senior Production Specialist



RECON Environmental, Inc.
[3111 Camino del Rio North, Suite 600](#)

[San Diego, CA 92108-5726](#)

(619) 308-9333 ext. 127

CA SB | SBA SB

[Website](#) | [Instagram](#) | [Facebook](#) | [LinkedIn](#)

ATTACHMENT 4

Photographs



PHOTOGRAPH 1
Overview Along Northeastern APE Boundary, Graded Parking Area,
Looking Northwest



PHOTOGRAPH 2
Overview Along Northwestern APE Boundary, Looking Southwest



PHOTOGRAPH 3
Overview Along Southeastern APE Boundary, Looking Southwest



PHOTOGRAPH 4
Overview Along Southwestern APE Boundary, Looking Northwest



PHOTOGRAPH 5
Overview of Single-Family Residence and Garage, Looking Northwest



PHOTOGRAPH 6
Overview of Reservoir Feature, Filled with Debris and Rubble,
Looking East-Northeast



PHOTOGRAPH 7
Overview of Updated Well Structure, Looking South



PHOTOGRAPH 8
Overview of Shallow Trench in Eastern Portion of APE, Looking Southeast

CONFIDENTIAL ATTACHMENT

(Under Separate Cover)