

This topographic map shows a property with several distinct areas and features:

- Proposed Parcels:**
 - PROP. PARCEL 1 (4.04 AC):** Located in the upper left, containing a building and a "PROPOSED 12' GROVE ACCESS EASEMENT".
 - PROP. PARCEL 2 (47.15 AC):** Located in the upper center, separated from Parcel 1 by a "PROPOSED PROPERTY LINE".
- Existing Parcel:**
 - EXISTING PARCEL (51.19 AC):** A large area in the center-right, containing "EXIST. STRUCTURES TO REMAIN", "EXIST. EQUIPMENT SHED TO REMAIN", and "EXIST. GROVE MANAGER'S RESIDENCE TO REMAIN".
- Roads:**
 - VISTA LUCIA:** A road on the far left.
 - ORO VERDE ROAD (PRIVATE):** A road at the bottom, with a "NOT A PART" label.
 - ROYAL VIEW ROAD:** A road at the bottom right.
- Survey Data and Features:**
 - Boundary Lines:** Dashed lines with bearings and distances (e.g., N28°39'51"W 999.02', N28°39'51"W 532.01', N24°14'11"W 327.81').
 - Topography:** Contour lines indicating elevation.
 - Other Labels:** "NOT A PART", "EXIST. GROVE MANAGER'S RESIDENCE TO REMAIN", "EXIST. EQUIPMENT SHED TO REMAIN", "EXIST. STRUCTURES TO REMAIN", "PROPOSED PROPERTY LINE", "EXISTING PROPERTY LINE", "SEE SHEET 2 FOR DETAIL", "SEE SHEET 3 FOR DETAIL", "SEE SHEET 4 FOR DETAIL".

Legend:

- 10** $P=840.0$ 5.42 AC
- 2%**
- 820.7**
- 818.2**
- W**
- E**

EXISTING OVERHEAD LINE

_____W_____

SAN PASQUAL
(PUBLIC)

 H&

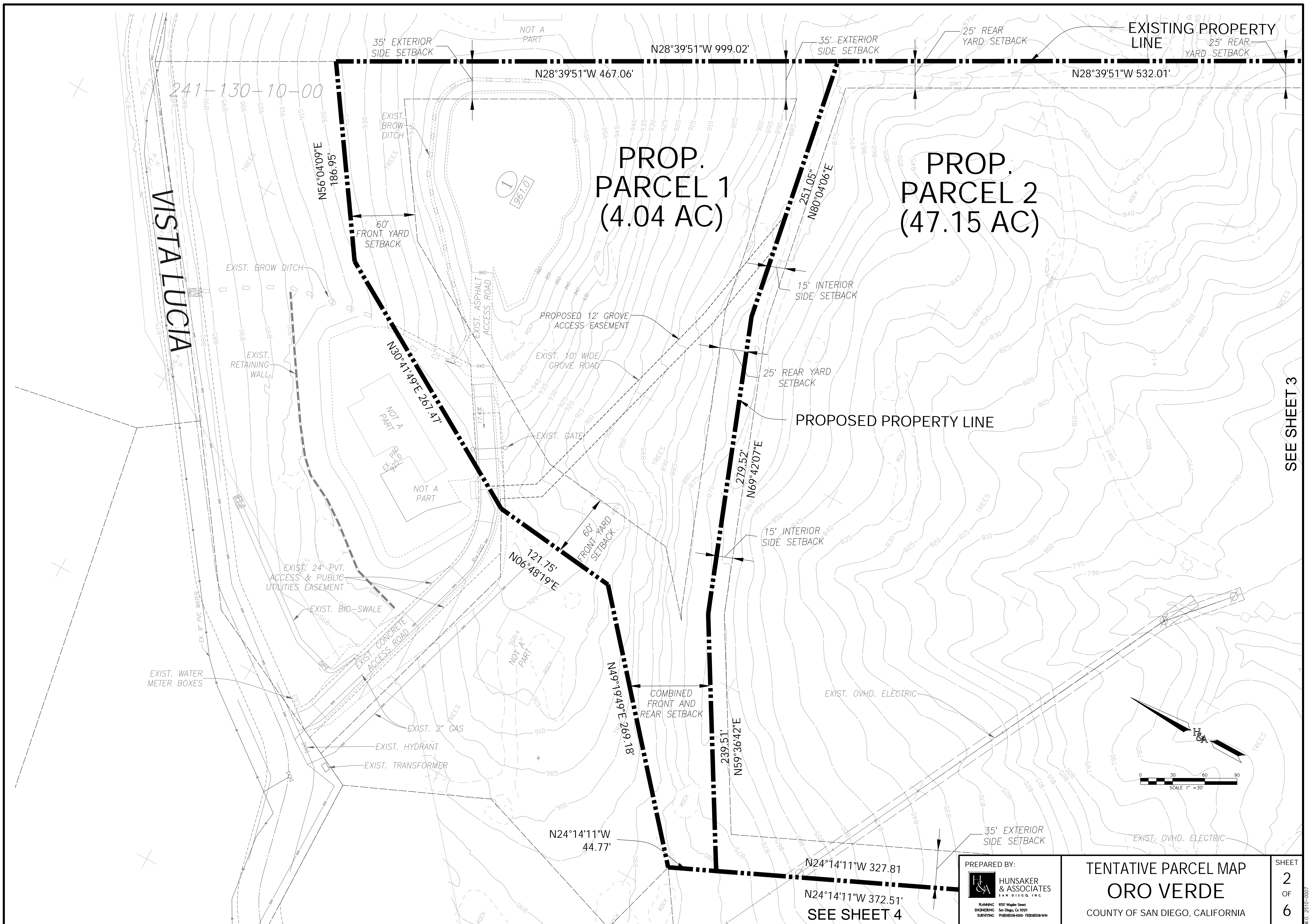
101

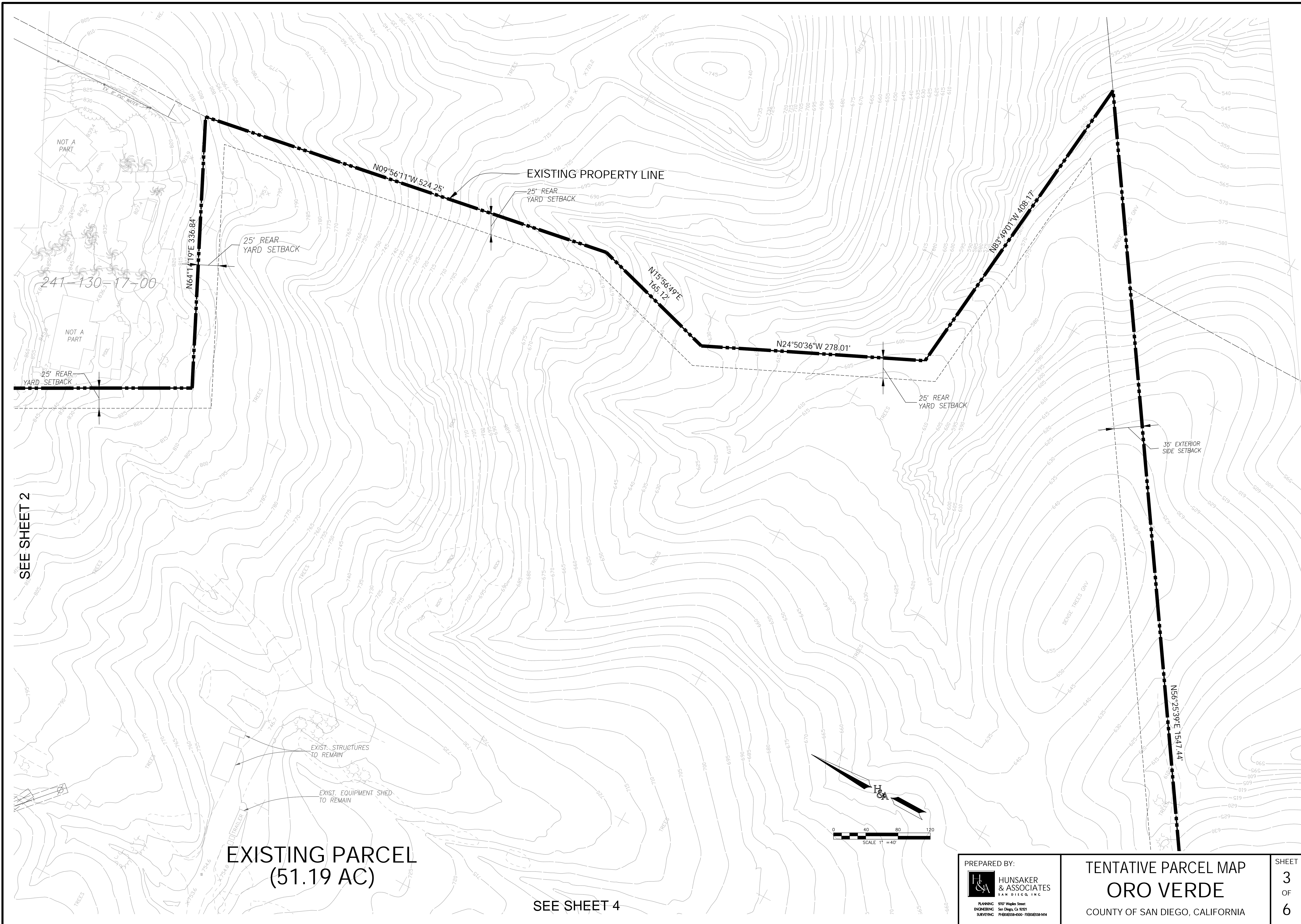
SCALE 1

24

EI

SHEET
1
OF
6
2510-0007





SEE SHEET 2

SEE SHEET 4

EXISTING PARCEL
(51.19 AC)

	PREPARED BY:	TENTATIVE PARCEL MAP ORO VERDE COUNTY OF SAN DIEGO, CALIFORNIA	SHEET 3 OF 6
	HUNSAKER & ASSOCIATES SAN DIEGO, INC.		
	PLANNING: 9707 Wiggins Street ENGINEERING: San Diego, CA 92121 SURVEYING: PH050558-4500- FAX050558-1414		

