

LEGEND

Road Network

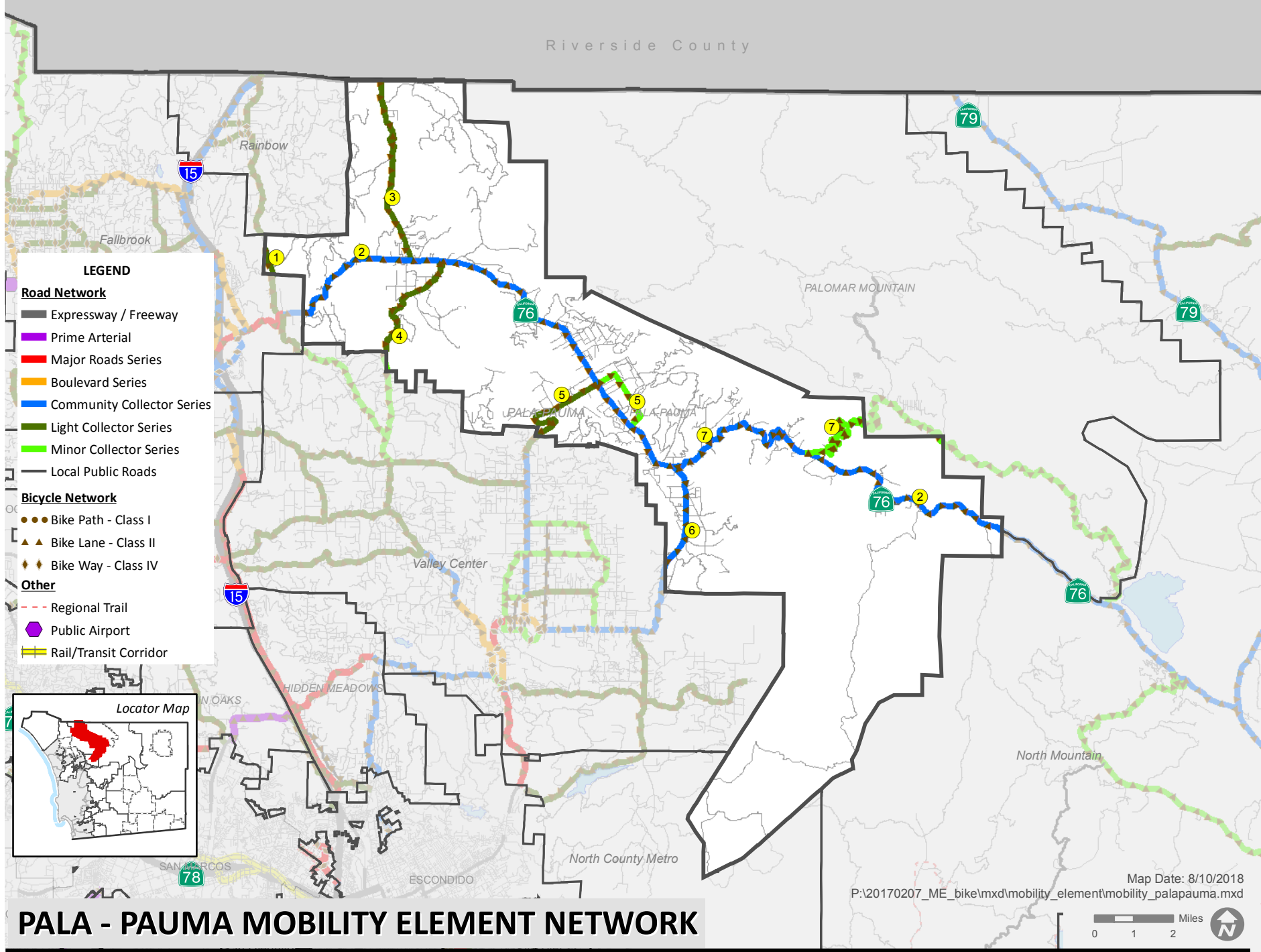
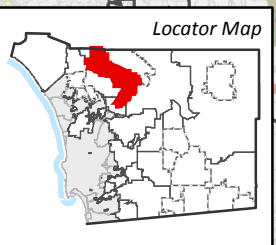
- Expressway / Freeway
- Prime Arterial
- Major Roads Series
- Boulevard Series
- Community Collector Series
- Light Collector Series
- Minor Collector Series
- Local Public Roads

Bicycle Network

- Bike Path - Class I
- Bike Lane - Class II
- Bike Way - Class IV

Other

- Regional Trail
- Public Airport
- Rail/Transit Corridor



Map Date: 8/10/2018
 P:\20170207_ME_bike\mxd\mobility_element\mobility_palapauma.mxd



PALA - PAUMA MOBILITY ELEMENT NETWORK



Mobility Element Network—Pala/Pauma Subregion Matrix			
ID ^a	Road Segment	Designation/Improvement #. #X = [# of lanes].[roadway classification][improvement]	Special Circumstances
1	Rice Canyon Road <u>Segment:</u> Fallbrook CPA boundary southeast to Fallbrook CPA boundary	2.2D Light Collector Improvement Options [Passing Lanes]	None
2	State Route 76 <u>Segment:</u> Fallbrook CPA boundary to North Mountain Subregion boundary	2.1D Community Collector Improvement Options [Passing Lanes, Curve Corrections, Left and Right Turn Lanes, Channelizations, and Intersection improvements]	Accepted at LOS F <u>Segment:</u> Pala Del Norte Road to Sixth Street
3	Pala Temecula Road (SA 110) <u>Segment:</u> Riverside County line to SR-76	2.2D Light Collector Improvement Options [Passing Lanes]	None
4	Lilac Road (SA 110) <u>Segment:</u> Valley Center CPA boundary to SR-76	2.2E Light Collector	None
5	Cole Grade Road (SA 120) <u>Segment:</u> Valley Center CPA boundary to SR-76	2.1D Community Collector Improvement Options [Passing Lanes]—Valley Center CPA boundary to SR-76	None
6	Valley Center Road (SF 639) <u>Segment:</u> Valley Center CPA boundary to SR-76	2.1D Community Collector Improvement Options [Raised Median]	None
7	South Grade Road (SF 1417) <u>Segment:</u> SR-76 to North Mountain Subregion boundary	2.3C Minor Collector	None
8	New Road 8 <u>Segment:</u> Cole Grade Road to SR-76	2.3B Minor Collector Intermittent Turn Lanes—SR-76 to SR-76	None

a. ID = Roadway segment on Figure M-A-15