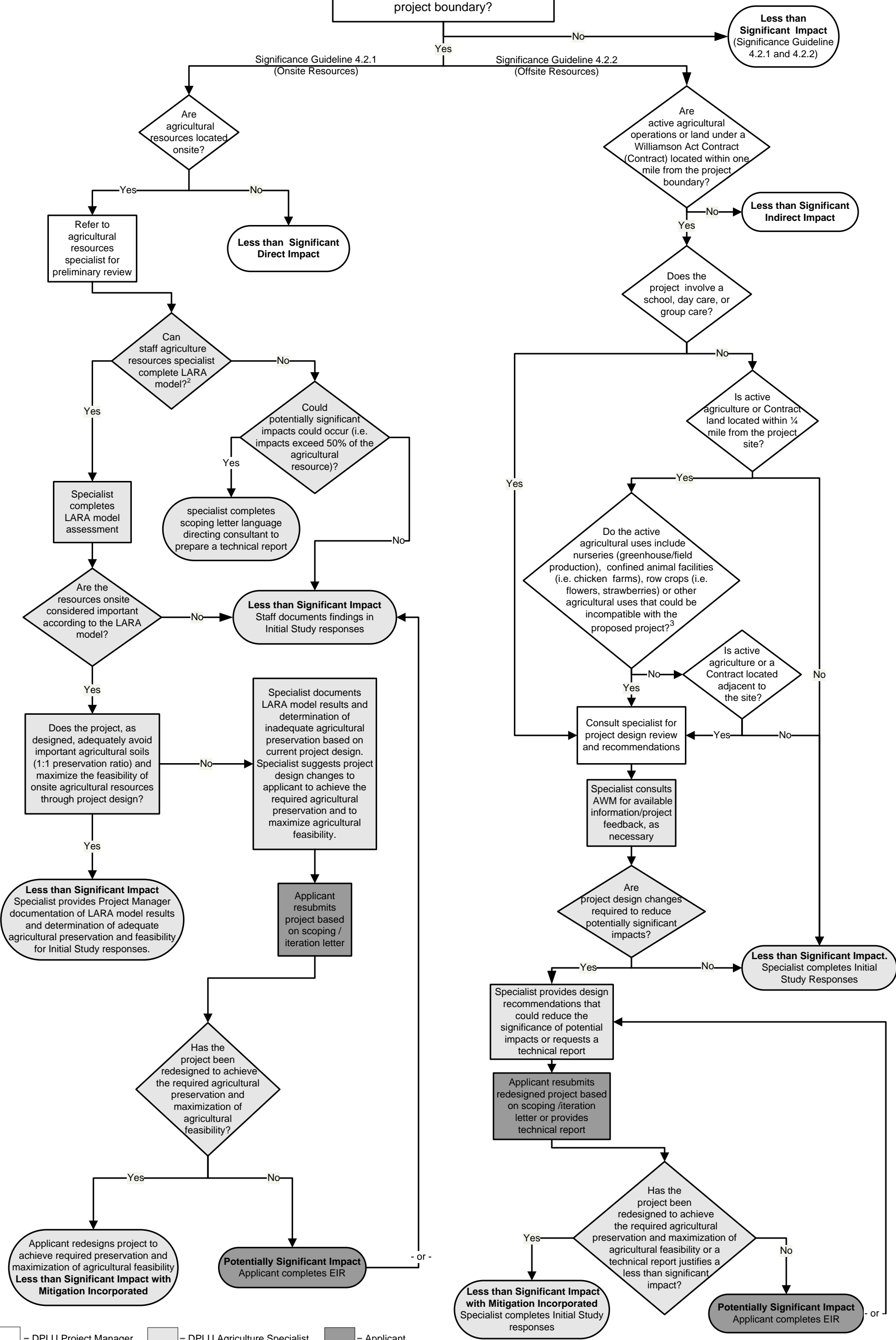


Are agricultural resources<sup>1</sup> located onsite or within one mile from the project boundary?



□ = DPLU Project Manager    □ = DPLU Agriculture Specialist    □ = Applicant

<sup>1</sup> Agricultural resources include active agricultural operations; sites designated as *and that meet the definition of a FMMP Important Farmland Category*; and sites with a history of agricultural production based on aerial photography or other data sources identifying agricultural land uses  
<sup>2</sup> The LARA model will be applied by County staff unless it is not feasible due to large project size or other peculiar site conditions.  
<sup>3</sup> Orchard crops such as avocados and citrus typically have less compatibility issues than the referenced agricultural uses due to less chemical treatments, less farmworker presence, less truck traffic, or less odor; however the site specific conditions of each commodity must be taken into consideration when determining whether an agricultural use could be incompatible with the proposed project.