



County of San Diego
Planning & Development Services
BUILDING DIVISION

ACCESSIBILITY CORRECTION LIST Public Accommodations & Commercial Buildings	3B
Curb Ramps	

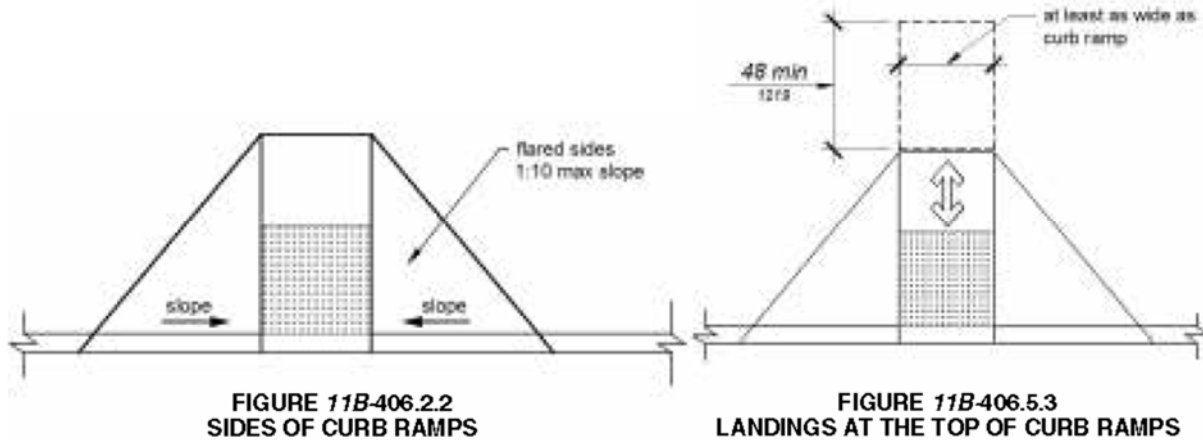
RECORD ID:	OWNER ON APPLICATION:
------------	-----------------------

GENERAL REQUIREMENTS

1. Identify on site accessibility plan location of all curb ramps. CBC 11B-406
2. Curb ramps and flared sides shall not project into vehicular traffic lanes, parking stalls, or parking access aisles. CBC 11B-406.5.1
3. Specify surfaces of curb ramps and flared sides shall be stable, firm and slip-resistant. CBC 11B-302.1, CBC 11B-405.4, and CBC 11B-406.5.4

DIMENSIONS AND SLOPES

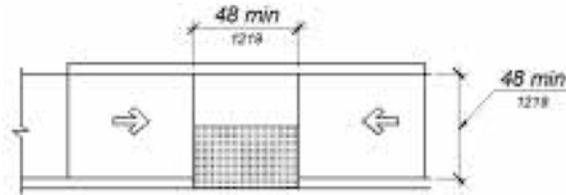
4. Provide complete dimensions and coordinated detailing for each curb ramp. CBC 11B-406
5. Detail any perpendicular curb ramps per the following:
 - Ramp run with maximum 8.3% running slope
 - Ramp run with maximum 2.1% cross slope
 - Where provided, flared sides with maximum 10% slope per CBC Figure 11B-406.2.2
 - Ramp run with minimum 48-inch clear width (excluding flared sides)
 - Level top landing minimum 48-inches deep and at least as wide as ramp run (excluding flared sides) per CBC Figure 11B-406.5.3



CBC 11B-406.2 and CBC 11B-406.5

THIS DOCUMENT IS FOR PLAN REVIEW ONLY.
CORRECTION LIST ITEMS AND FIGURES MAY NOT BE REPRODUCED OR COPIED ON PLANS.
IF CONFLICTS EXIST BETWEEN CODE TEXT AND FIGURES, THE CODE TEXT SHALL GOVERN.

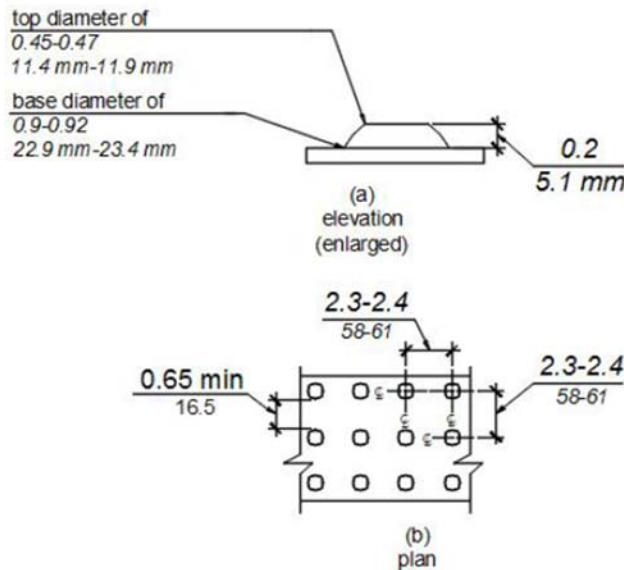
6. Detail any parallel curb ramps per the following:
- Ramp run(s) with maximum 8.3% running slope and in line with direction of sidewalk travel
 - Ramp run(s) with maximum 2.1% cross slope
 - Ramp run(s) with minimum 48-inch clear width
 - Minimum 48-inch by 48-inch level turning space at bottom of curb ramp per CBC Figure 11B-406.3.2



**FIGURE 11B-406.3.2
PARALLEL CURB RAMPS**

CBC 11B-406.3 and CBC 11B-406.5

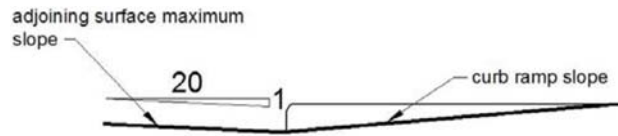
7. Detail detectable warning complying with the following at each curb ramp:
- Extending full width of curb ramp run – excluding flared sides – less maximum 2 inches on each side
 - Extending minimum 36 inches in direction of travel
 - Exception:** On parallel curb ramps, detectable warnings minimum 36-inches deep shall be placed on the turning space at the flush transition between the sidewalk and vehicular area, extending the full width of the flush transition less maximum 2 inches on each side
 - Located so the edge nearest curb is minimum 6 inches and maximum 8 inches from line at curb face
 - Including raised, truncated domes per CBC Figure 11B-705.1:
 - o Minimum 0.9-inch and maximum 0.92-inch base diameter
 - o Minimum 0.45-inch and maximum 0.47-inch top diameter
 - o 0.20-inch height
 - o Minimum 2.3-inch and maximum 2.4-inch center-to-center spacing and minimum 0.65-inch base-to-base spacing
 - Exception:** Minimum 1.6-inch and maximum 2.4-inch center-to-center spacing acceptable for domes in radial pattern
 - Color – integral to surface – contrasting with adjacent walking surfaces, either light-on-dark or dark-on-light



**FIGURE 11B-705.1
SIZE AND SPACING OF TRUNCATED DOMES**

CBC 11B-247.1.2.2, CBC 11B-406.5, and CBC 11B-705.1

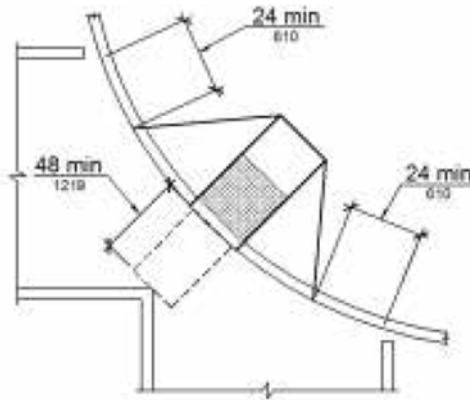
8. Specify the following for transitions from curb ramps to adjoining walks, gutters, and streets:
- Flush and free of abrupt change
 - Maximum 5% counter slope of adjoining gutters and road surfaces immediately adjacent to and within 24 inches of curb ramp per CBC Figure 11B-406.5.7



**FIGURE 11B-406.5.7
COUNTER SLOPE OF SURFACES ADJACENT TO CURB RAMPS**

CBC 11B-406.5.8

9. Detail and dimension any diagonal curb ramps to comply additionally with the following per CBC Figure 11B-406.5.10:
- Minimum 48-inch clear space at bottom of ramp within any marked crossings and outside active traffic lanes of roadway
 - If ramps have returned curb or other well-defined edges, such edges shall be parallel to direction of pedestrian flow
 - If ramps have flared sides, minimum 24-inch-long segment of straight curb required on each side of curb ramp and within any marked crossings



**FIGURE 11B-406.5.10
DIAGONAL OR CORNER TYPE CURB RAMPS**

CBC 11B-506.9 and CBC 11B-506.10