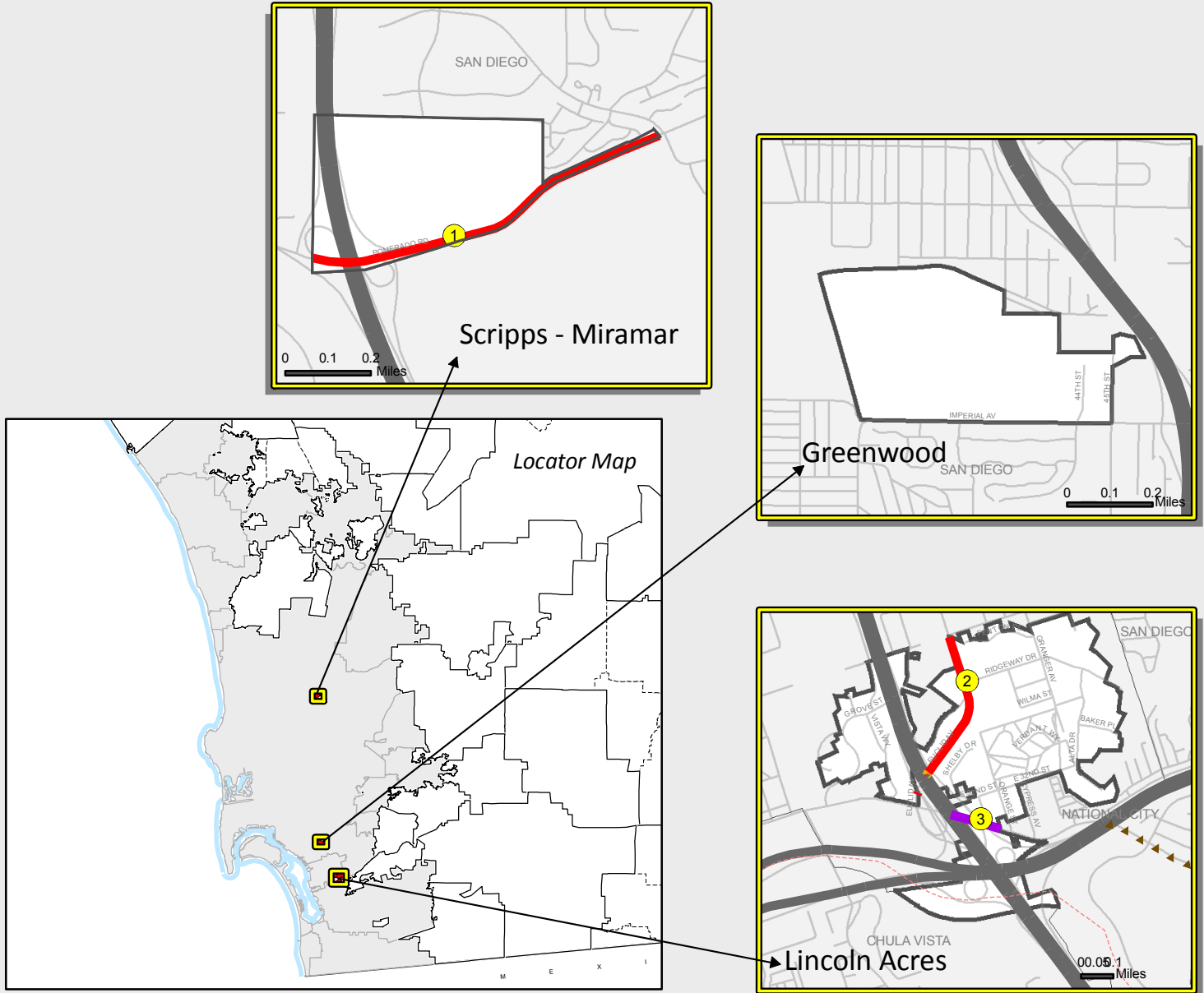


- LEGEND**
- Road Network**
- Expressway / Freeway
  - Prime Arterial
  - Major Roads Series
  - Boulevard Series
  - Community Collector Series
  - Light Collector Series
  - Minor Collector Series
  - Local Public Roads
- Bicycles and Pedestrians**
- Bike Path - Class I
  - Bike Lane - Class II
  - Bike Route - Class III
- Other**
- Regional Trail
  - Public Airport
  - Military Airport
  - Rail/Transit Corridor



Map Date: August 2011  
 Source: County of San Diego<sup>1</sup>

# COUNTY ISLANDS MOBILITY ELEMENT NETWORK





Mobility Element Network—County Islands Planning Area Matrix			
ID <sup>a</sup>	Road Segment	Designation/Improvement #. #X = [# of lanes].[roadway classification][improvement]	Special Circumstances
1	Pomerado Road (SA 760) <u>Segment</u> : Interstate 15 to San Diego city limits	4.1A Major Road Raised Median	Accepted at LOS F <u>Segment</u> : I-15 northbound ramp to Willow Creek Road
2	Euclid Avenue (SA 1175) <u>Segment</u> : National City limits to Sweetwater Road	4.1A Major Road Raised Median	None
3	Sweetwater Road (SA 1170) <u>Segment</u> : Entire length within Lincoln Acres County Island	6.2 Prime Arterial	None

a. ID = Roadway segment on Figure M-A-4