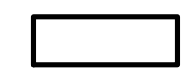

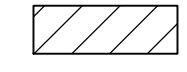


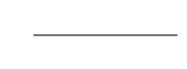



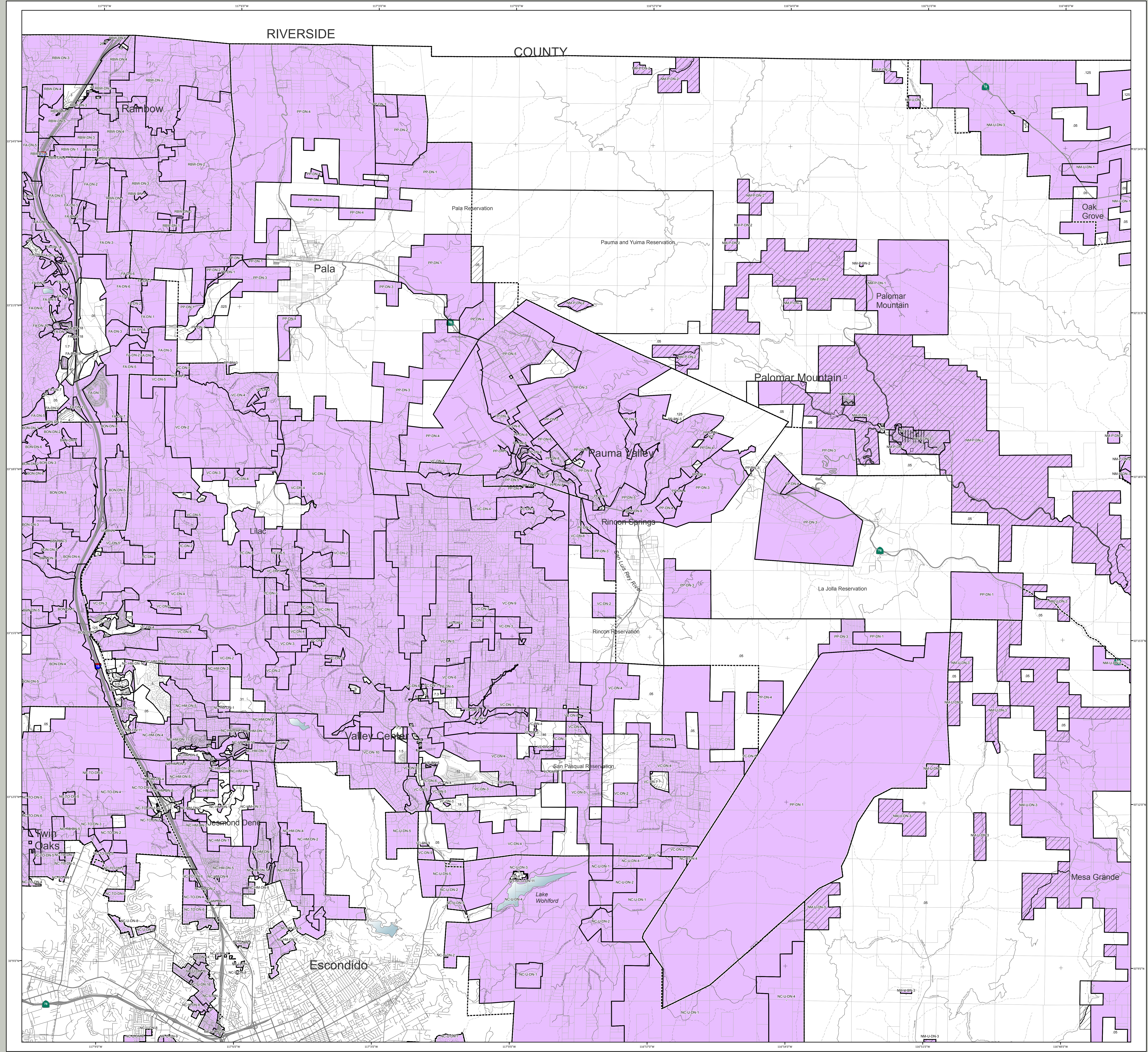
RIVERSIDE COUNTY

**Pala - Pauma: Density Regulations**  
 (August 2010)

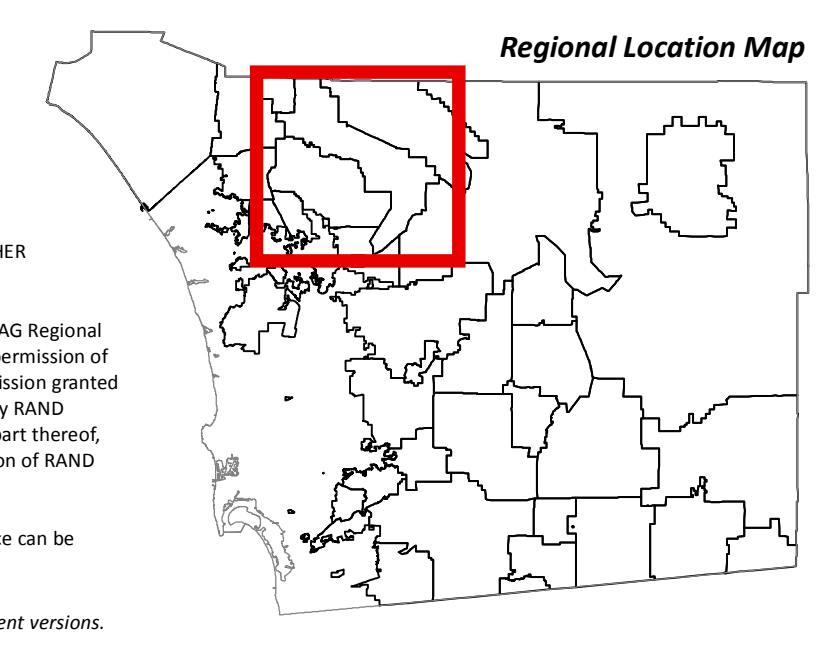
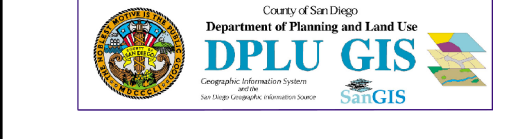
Map # PP-DN1  
 DOC # \_\_\_\_\_

**Legend**

-  Proposed Density Regulations (No Change)
-  Proposed Density Regulations (Areas of Change)
-  Forest Conservation Initiative Overlay
-  Assessor Parcels
-  Lakes
-  Roads
-  Pala - Pauma Community Planning Area Boundary



Map Prepared By:



Coordinates: NAD83 Feet  
 THIS MAP/DATA IS PROVIDED WITHOUT WARRANTY OF ANY KIND, EITHER EXPRESS OR IMPLIED, INCLUDING BUT NOT LIMITED TO THE IMPLIED WARRANTIES OF MERCHANTABILITY AND FITNESS FOR A PARTICULAR PURPOSE. Note: This product may contain information reproduced with permission granted by RAND ACTUALLY & COMPANY™ to SANDAG. This map is copyrighted by RAND ACTUALLY & COMPANY™. It is unlawful to copy or reproduce all or any part thereof, whether for personal use or resale, without the prior, written permission of RAND ACTUALLY & COMPANY™.  
 Copyright © SANDAG 2009. All Rights Reserved. Full text of this legal notice can be found at: [http://www.sandag.org/Legal\\_Notice.htm](http://www.sandag.org/Legal_Notice.htm)  
 This is a draft map and should be destroyed upon submission of subsequent versions.

Source: County of San Diego, SanGIS, SANDAG  
 File reference: S:\land\_use\gisupdate\_mips\arcmap\working\actua.mxd

