

GENERAL PLAN UPDATE
DESCANSO
Sponsor Group Area

Referral Map (May 2008)

This is one of multiple alternatives being considered for the General Plan Update. Additional alternatives are available at the County Dept. of Planning & Land Use or <http://www.co.san-diego.ca.gov/onlyhwydps/landuse/planning/gpupdate/>

Land Use Designations^{1,2}

- Village Residential (VR-30), 30 du/ac
- Village Residential (VR-24), 24 du/ac
- Village Residential (VR-20), 20 du/ac
- Village Residential (VR-15), 15 du/ac
- Village Residential (VR-10.9), 10.9 du/ac
- Village Residential (VR-7.3), 7.3 du/ac
- Village Residential (VR-4.3), 4.3 du/ac
- Village Residential (VR-2.9), 2.9 du/ac
- Village Residential (VR-2), 2 du/ac
- Semi-rural Residential (SR-0.5), 1 du/0.5 ac
- Semi-rural Residential (SR-1), 1 du/1,2,4 ac
- Semi-rural Residential (SR-2), 1 du/2,4,8 ac
- Semi-rural Residential (SR-4), 1 du/4,8,16 ac
- Semi-rural Residential (SR-10), 1 du/10,20 ac
- Rural Lands (RL-20), 1 du/20 ac
- Rural Lands (RL-40), 1 du/40 ac
- Rural Lands (RL-80), 1 du/80 ac
- Rural Lands (RL-160), 1 du/160 ac
- Specific Plan Area (densities indicated in *italics*)⁴
- Office Professional³
- Neighborhood Commercial³
- General Commercial³
- Rural Commercial³
- Limited Impact Industrial³
- Medium Impact Industrial³
- High Impact Industrial³
- Village Core Mixed Use
- Public/Semi-Public Facilities³
- National Forest and State Parks
- Tribal Lands
- Open Space (Recreation)
- Open Space (Conservation)
- Military Installations
- Forest Conservation Initiative Overlay
- County Water Authority Boundary
- Descanso Sponsor Group Boundary
- Adjacent Community Plan and Sponsor Group Boundary
- Jurisdictional Boundary

NOTES

- The type and intensity of development depicted on the map must be implemented in accordance with General Plan goals and policies and other County regulations which may further affect the type and intensity of use.
- Land Use Element, Table LU-1 indicates the applicable Regional Category for each designation.
- Maximum development intensity for non-residential designations is provided in Land Use Element, Table LU-1.
- Refer to Community Plan for land uses allowed in Specific Plan Area (SPA).

Map Prepared By:

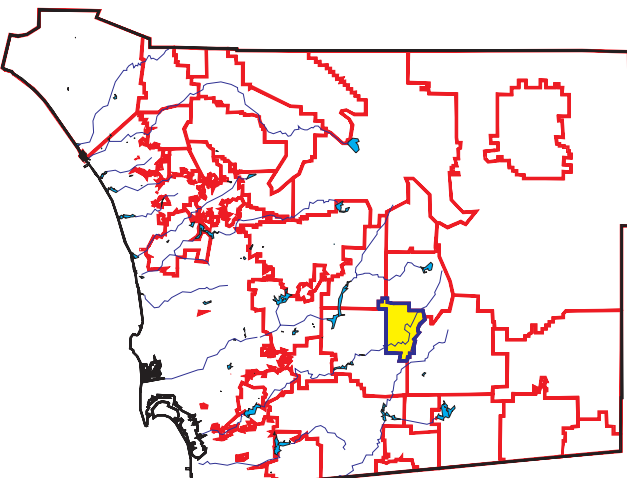


Coordinates: Stateplane NAD83 Feet, Zone 3401

This map is provided without warranty of any kind, either expressed or implied, including but not limited to, the implied warranties of merchantability and fitness for a particular purpose. This product may contain information from SANDAG Regional Information System which cannot be reproduced without the written permission of SANDAG. This product may contain information which has been reproduced with permission granted by Thomas Bros. Maps. Copyright SanGIS. All Rights Reserved.

This is a draft map and should be destroyed upon submittal of subsequent versions.

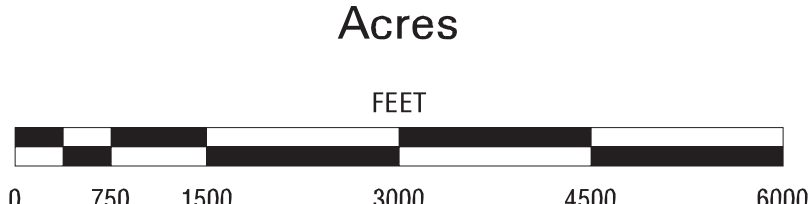
Regional Location Map



20

Acres

FEET



Source: /pp/scenarios/at19

File: /data/1pp/amla/gp_mapper.aml gpx

Printed 14 May 08