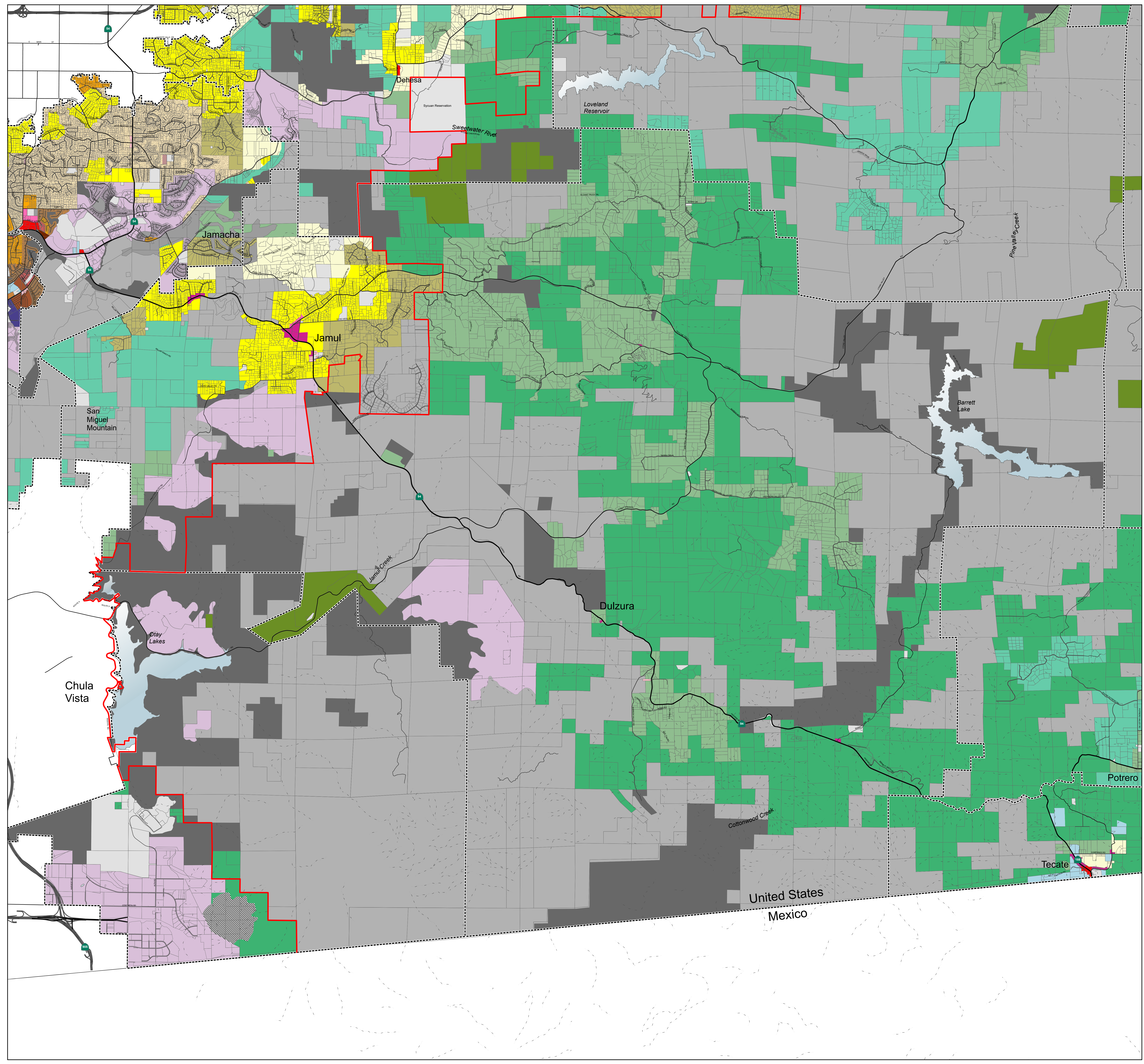


Jamul

Subregional Planning Area



General Plan Land Use Designations^{1,2}

- Village Residential (VR-30)
- Village Residential (VR-24)
- Village Residential (VR-20)
- Village Residential (VR-15)
- Village Residential (VR-10.9)
- Village Residential (VR-7.3)
- Village Residential (VR-4.3)
- Village Residential (VR-2.9)
- Village Residential (VR-2)
- Semi-Rural Residential (SR-0.5)
- Semi-Rural Residential (SR-1)
- Semi-Rural Residential (SR-2)
- Semi-Rural Residential (SR-4)
- Semi-Rural Residential (SR-10)
- Rural Lands (RL-20)
- Rural Lands (RL-40)
- Rural Lands (RL-80)
- Specific Plan Area
- Office Professional
- Neighborhood Commercial
- General Commercial
- Rural Commercial
- Limited Impact Industrial
- Medium Impact Industrial
- High Impact Industrial
- Village Core Mixed Use
- Public/Semi-Public Facilities
- Public/Semi-Public Lands (Solid Waste Facility)
- Public Agency Lands
- Tribal Lands
- Open Space (Recreation)
- Open Space (Conservation)
- County Water Authority Boundary
- Planning Area Boundary

- NOTES:**
- 1: The type and intensity of development depicted on the map must be implemented in accordance with General Plan goals and policies and other County regulations which may further affect the type and intensity of use.
 - 2: Land Use Element, Table LU-1 indicates the applicable Regional Category for each designation.
 - 3: Maximum development intensity for non-residential designations is provided in Land Use Element, Table LU-1.
 - 4: Refer to Community Plan for general land uses and intensities allowed in Specific Plan area (SPA).

Map Prepared By:
LUeGIS
 Land Use Element Group - Geographic Information Services

Coordinates: NAD83 Feet
 THIS MAP/DATA IS PROVIDED WITHOUT WARRANTY OF ANY KIND, EITHER EXPRESS OR IMPLIED, INCLUDING BUT NOT LIMITED TO, THE IMPLIED WARRANTIES OF MERCHANTABILITY AND FITNESS FOR A PARTICULAR PURPOSE. Note: This product may contain information from the SANDAG Regional Information System which cannot be reproduced without the written permission of SANDAG.
 Copyright 2016 - All Rights Reserved. Full text of this legal notice can be found at: <http://www.sandag.org>

