

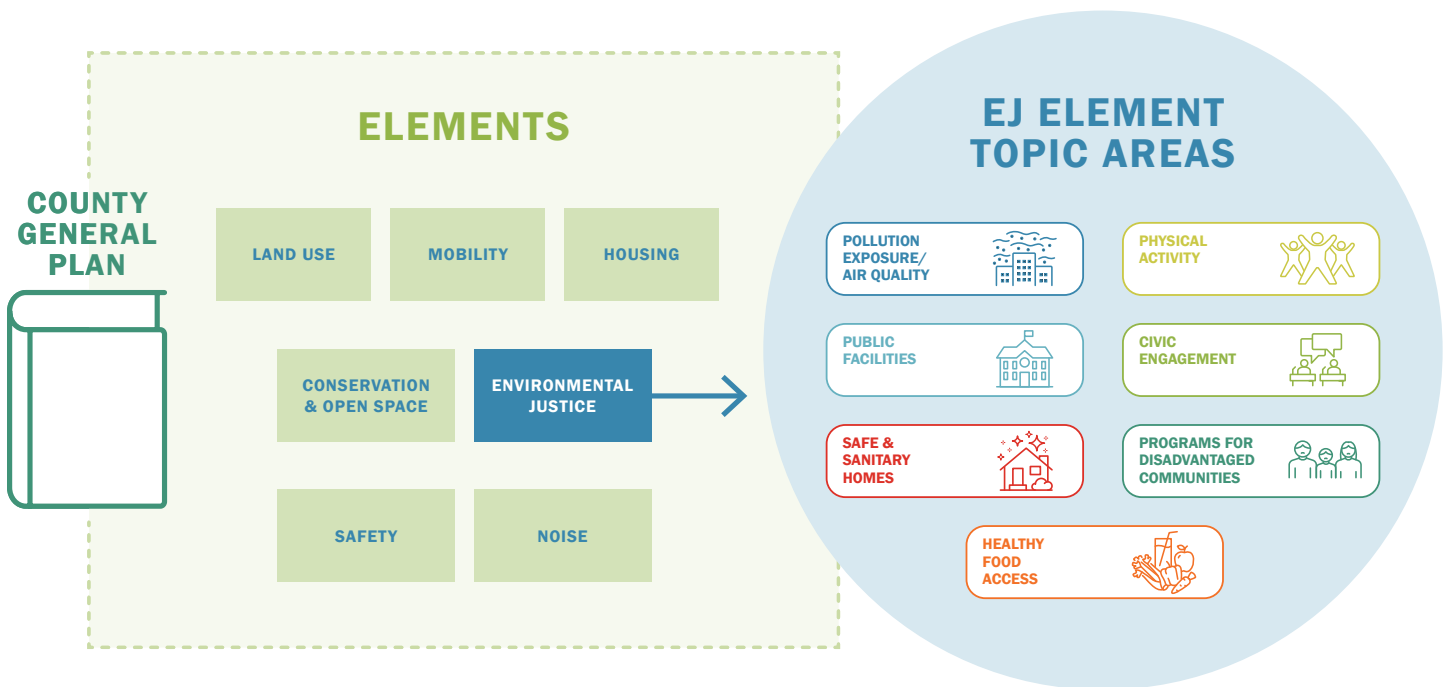


IDENTIFYING ENVIRONMENTAL JUSTICE COMMUNITIES IN SAN DIEGO COUNTY

The Environmental Justice Element of the General Plan

San Diego County wants your help expanding the identification of EJ communities in unincorporated county areas.

Public input will inform the **Environmental Justice Element (“EJ Element”)** of the County General Plan, which is a long-term plan that guides future growth and development in San Diego County.



The most recent EJ Element identified areas most at-risk for pollution exposure, environmental burdens, population vulnerabilities, and health stressors.

The EJ Element sets goals and policies that reduce environmental burdens in topic areas. Accurately identifying at-risk areas will ensure goals and policies are prioritized equitably.



Every community in unincorporated San Diego County is unique, therefore it is important that community members’ thoughts, concerns, and personal experiences inform the revised EJ Element.