

**LEGEND**

**Road Network**

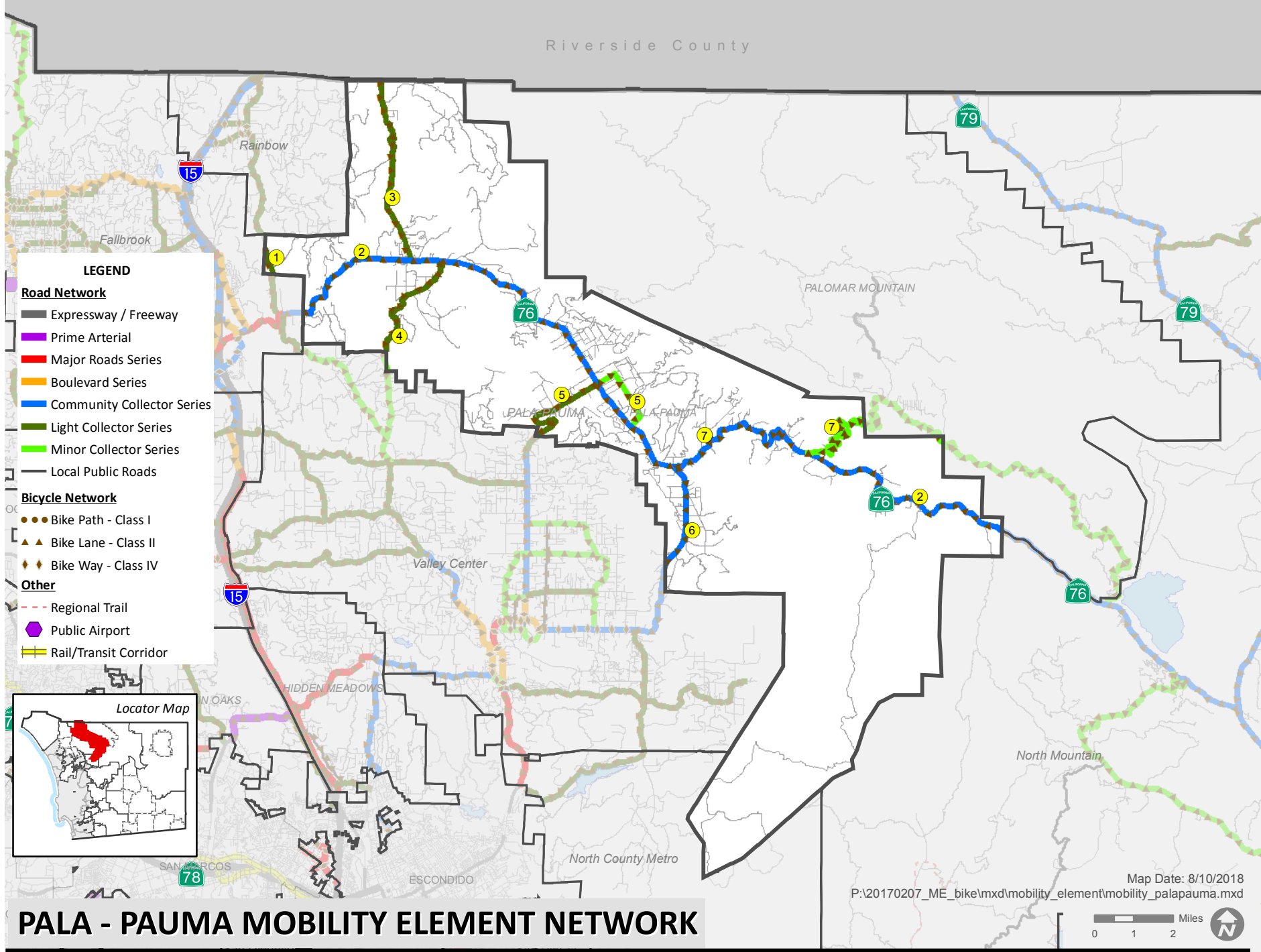
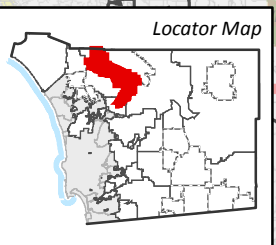
- Expressway / Freeway
- Prime Arterial
- Major Roads Series
- Boulevard Series
- Community Collector Series
- Light Collector Series
- Minor Collector Series
- Local Public Roads

**Bicycle Network**

- Bike Path - Class I
- Bike Lane - Class II
- Bike Way - Class IV

**Other**

- Regional Trail
- Public Airport
- Rail/Transit Corridor



**PALA - PAUMA MOBILITY ELEMENT NETWORK**

Map Date: 8/10/2018  
 P:\20170207\_ME\_bike\mxd\mobility\_element\mobility\_palapauma.mxd





Mobility Element Network—Pala/Pauma Subregion Matrix			
ID <sup>a</sup>	Road Segment	Designation/Improvement #. #X = [# of lanes].[roadway classification][improvement]	Special Circumstances
1	<b>Rice Canyon Road</b> Segment: Fallbrook CPA boundary southeast to Fallbrook CPA boundary	<b>2.2D Light Collector</b> Improvement Options [Passing Lanes]	None
2	<b>State Route 76</b> Segment: Fallbrook CPA boundary to North Mountain Subregion boundary	<b>2.1D Community Collector</b> Improvement Options [Passing Lanes, Curve Corrections, Left and Right Turn Lanes, Channelizations, and Intersection improvements]	<b>Accepted at LOS F</b> Segment: Pala Del Norte Road to Sixth Street
3	<b>Pala Temecula Road (SA 110)</b> Segment: Riverside County line to SR-76	<b>2.2D Light Collector</b> Improvement Options [Passing Lanes]	None
4	<b>Lilac Road (SA 110)</b> Segment: Valley Center CPA boundary to SR-76	<b>2.2E Light Collector</b>	None
5	<b>Cole Grade Road (SA 120)</b> Segment: Valley Center CPA boundary to SR-76	<b>2.1D Community Collector</b> Improvement Options [Passing Lanes]—Valley Center CPA boundary to SR-76	None
6	<b>Valley Center Road (SF 639)</b> Segment: Valley Center CPA boundary to SR-76	<b>2.1D Community Collector</b> Improvement Options [Raised Median]	None
7	<b>South Grade Road (SF 1417)</b> Segment: SR-76 to North Mountain Subregion boundary	<b>2.3C Minor Collector</b>	None
8	<b>New Road 8</b> Segment: Cole Grade Road to SR-76	<b>2.3B Minor Collector</b> Intermittent Turn Lanes—SR-76 to SR-76	None

a. ID = Roadway segment on Figure M-A-15