

Multiple Species Conservation Program



NORTH COUNTY PLAN



Steering Committee Meeting #3

March 16, 2017

Agenda



- Meeting Notes
- Continued PAMA Design Discussion
- Take Coverage vs. Environmental Analysis
- Watch List to Covered Species Process
- Covered Activities Introductions
- Steering Committee Discussion
- Closing Comments

Agenda



- Meeting Notes
- Data Sources and Methodology for Preserve Design
- Steering Committee Discussion
- Preliminary Overview of Species
 - Covered Species
 - Watch List Species
 - No Longer Covered or Watch List
- Closing Comments

Meeting Purpose and Objectives



Objectives for Meeting #3 and #4:

1. Close-out preserve design discussion
2. Close-out species discussion
3. Discuss covered activities
4. Provide introduction to conservation and impact analysis

Meeting Questions



Questions for Steering Committee:

1. Do you have suggestions to improve the methodology used to design the preserve?
2. Please identify specific areas of the preserve to which you would suggest modifications.
3. Do you have knowledge of additional data sources that should be used?
4. In reviewing the vegetation communities and their relationship to covered species – what are your concerns related to the currently proposed list of covered species?
5. Do you have any other questions or input for the preserve design process or covered species list?

Meeting #2 Recap



Overview from last week:

- North County Preserve Design
- Covered Species

Continued PAMA Discussion



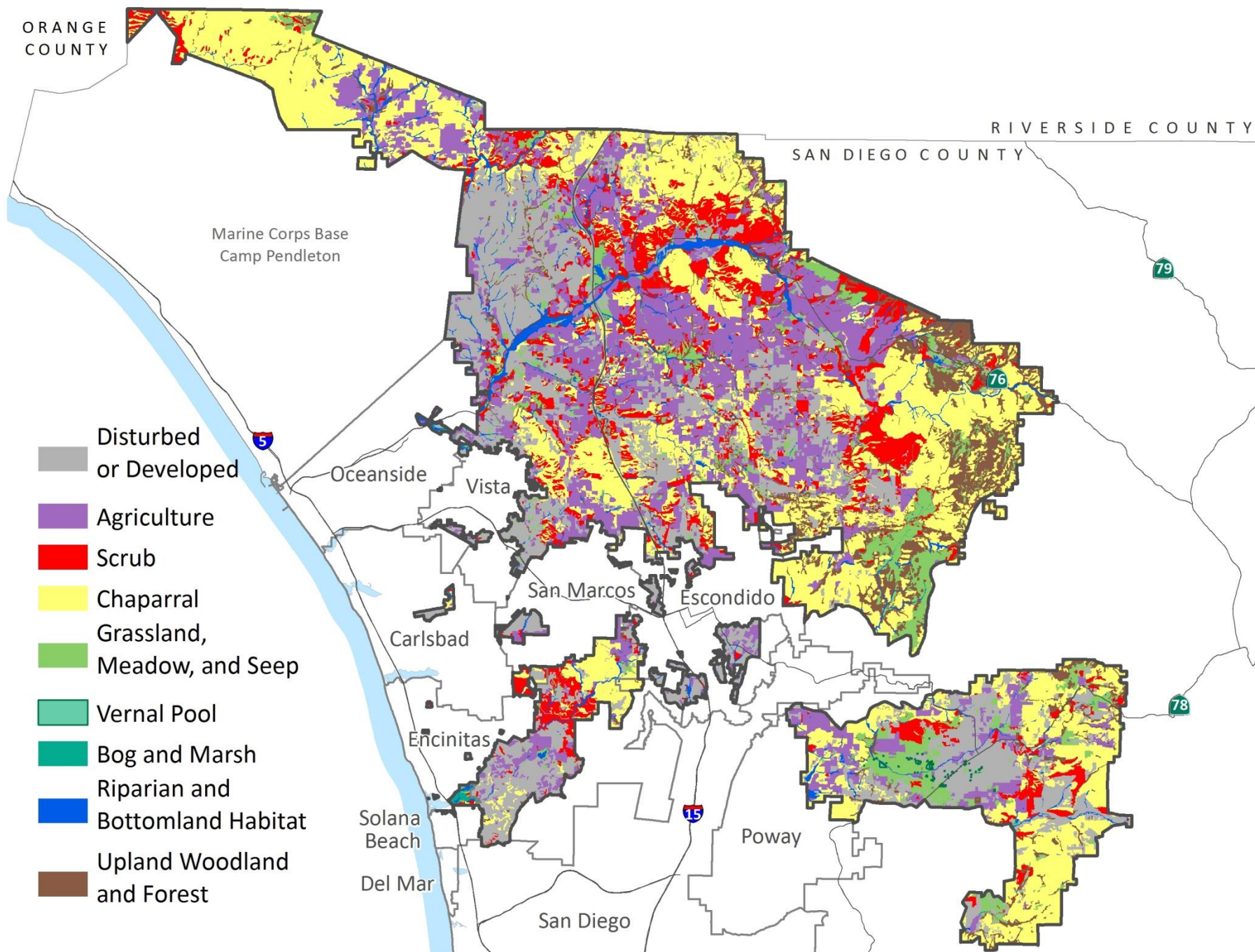
Preserve System:

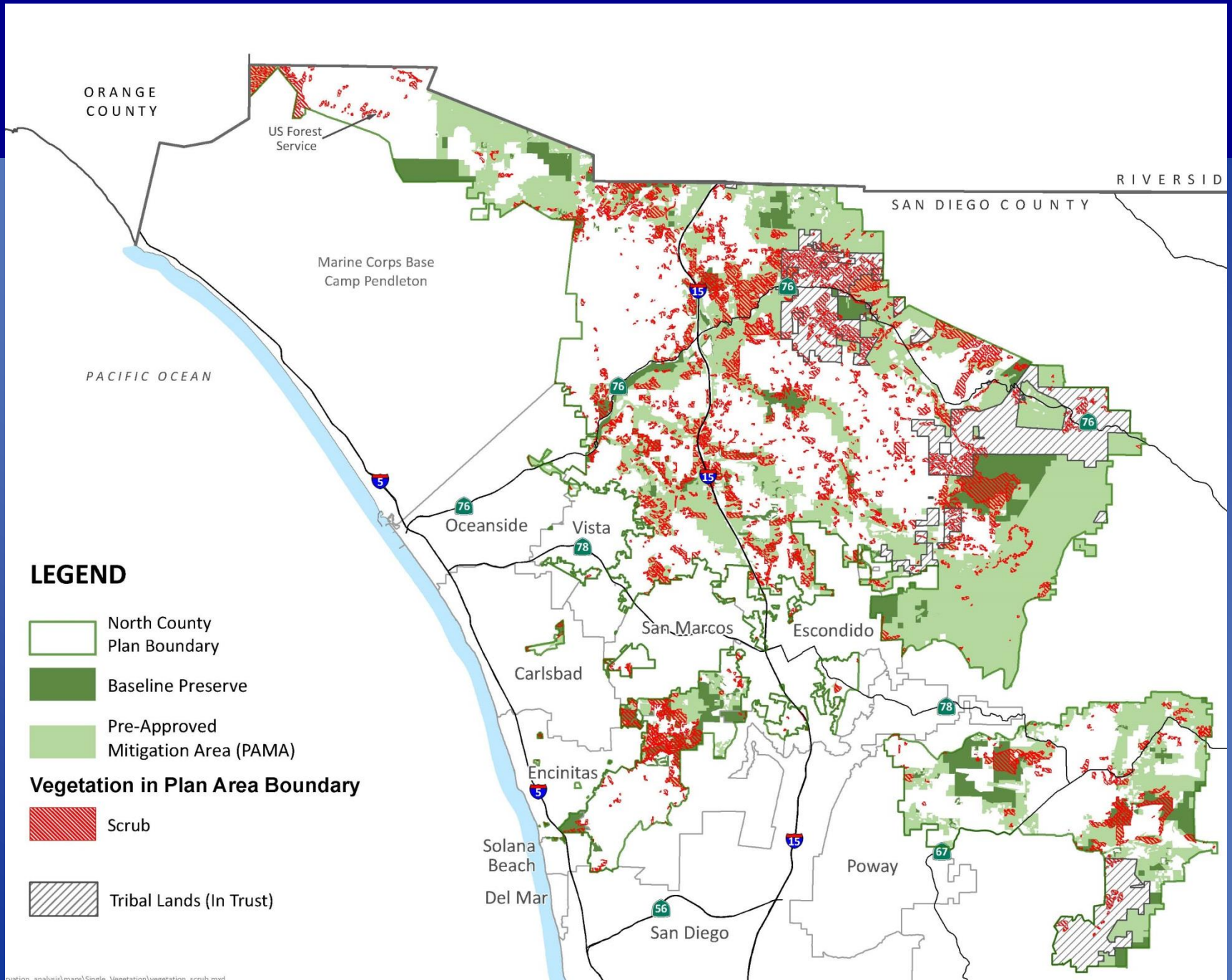
- Developed to protect all 63 potential species included in the North County Plan in 2009
- Will also protect 7 major vegetation communities
- Interconnected system of conserved lands to allow for movement due to climate change and other factors
 - Diversity of vegetation communities
 - Range of elevations

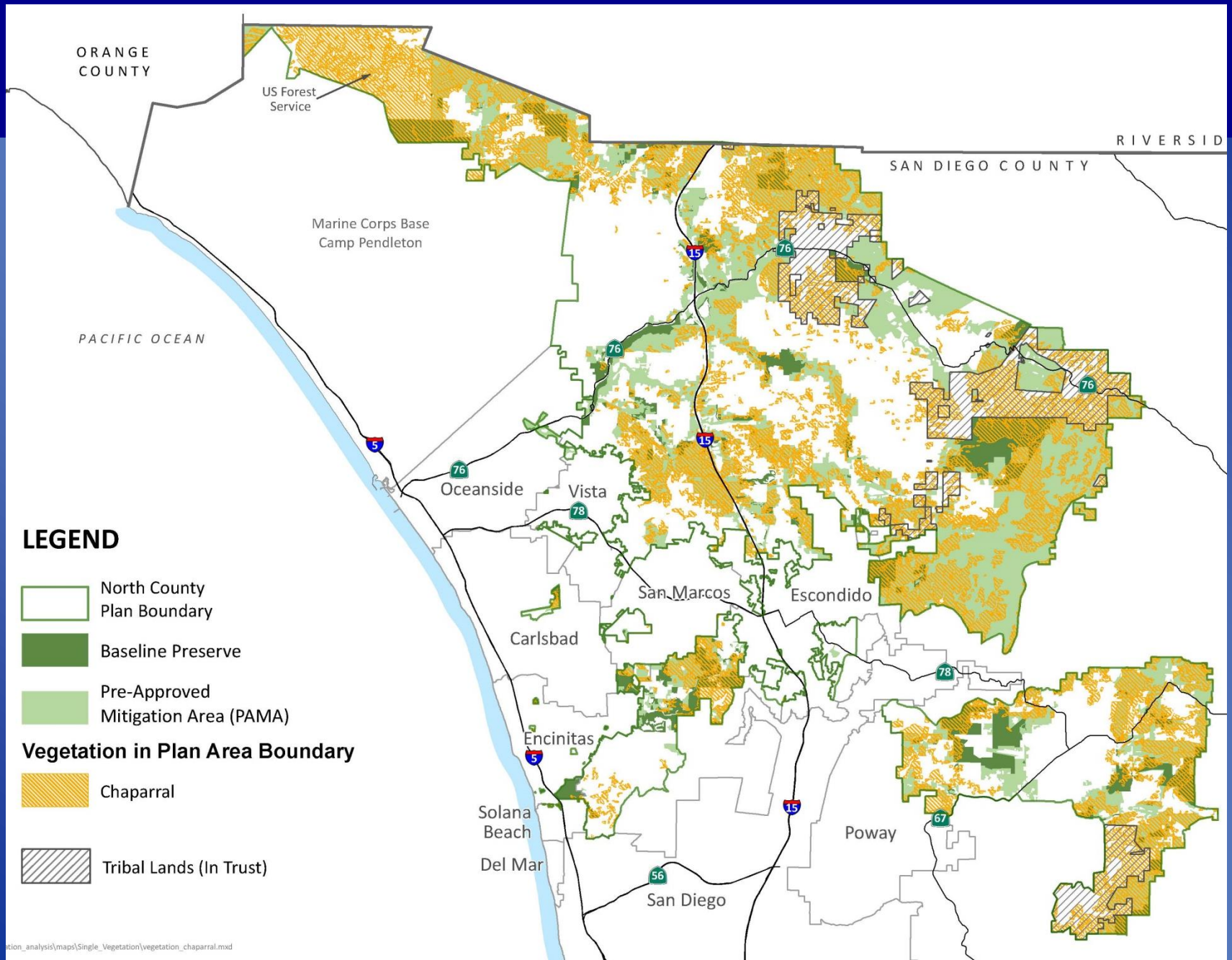
Continued PAMA Discussion

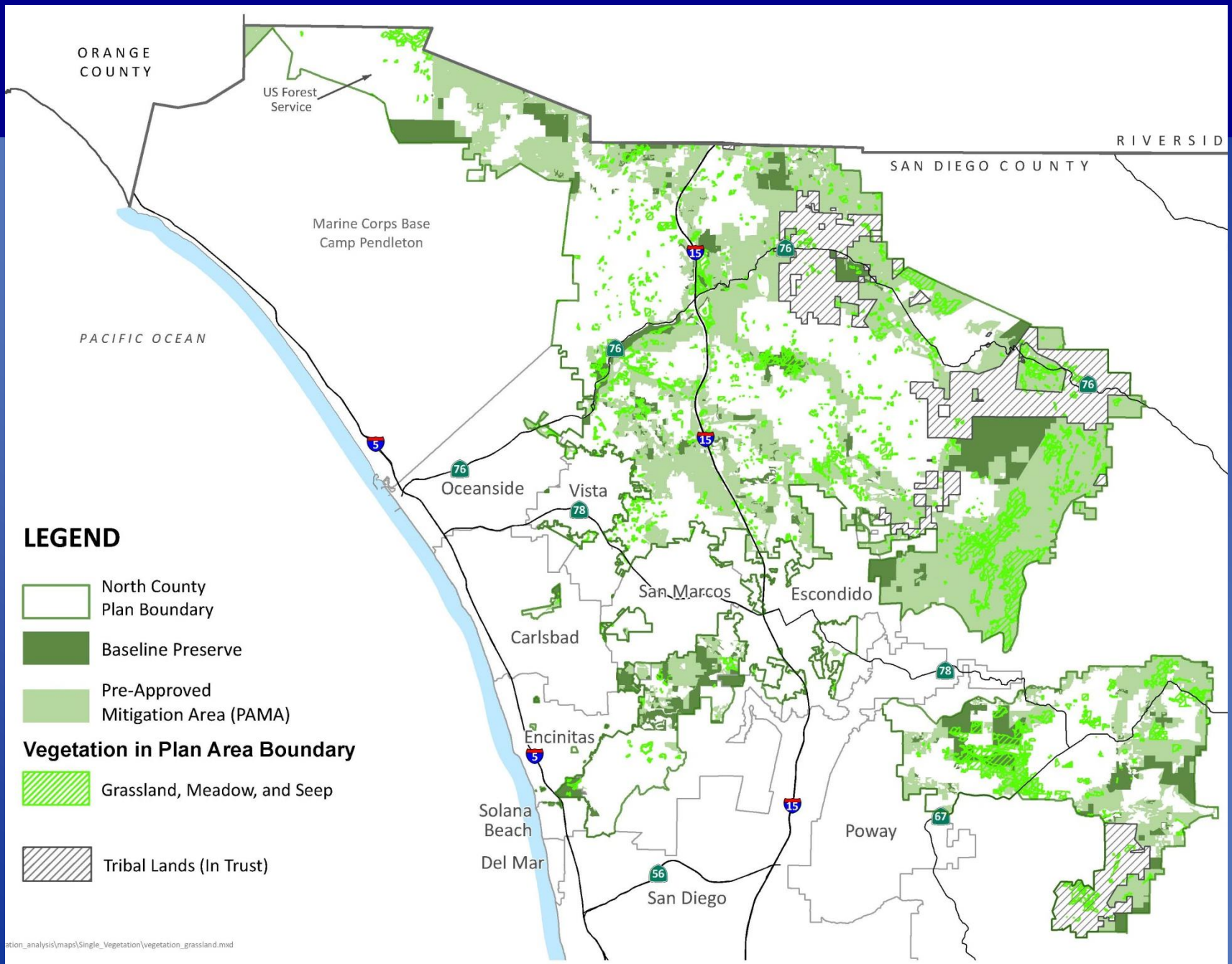


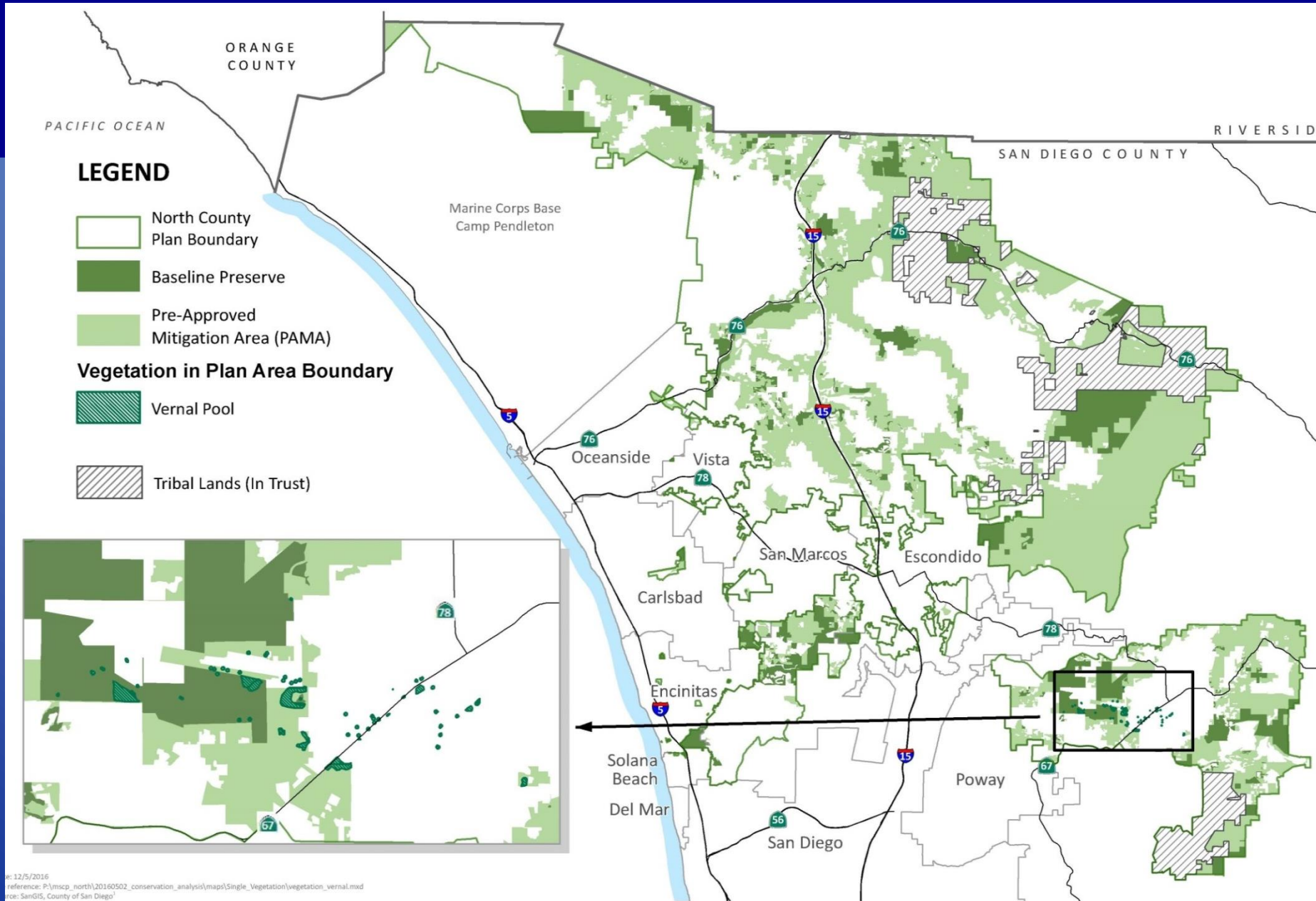
| # Species | Scrub | Chaparral | Grassland, Meadow and Seep | Vernal Pool | Bog and Marsh | Riparian and Bottomland Habitat | Upland Woodland and Forest |
|-----------------------|-----------|-----------|----------------------------------|----------------|---------------------|--|-------------------------------------|
| Covered Species | 11 | 12 | 11 | 3 | 2 | 10 | 5 |
| Watch List Species | 9 | 9 | 6 | 0 | 0 | 2 | 5 |
| TOTAL | 20 | 21 | 17 | 3 | 2 | 12 | 10 |



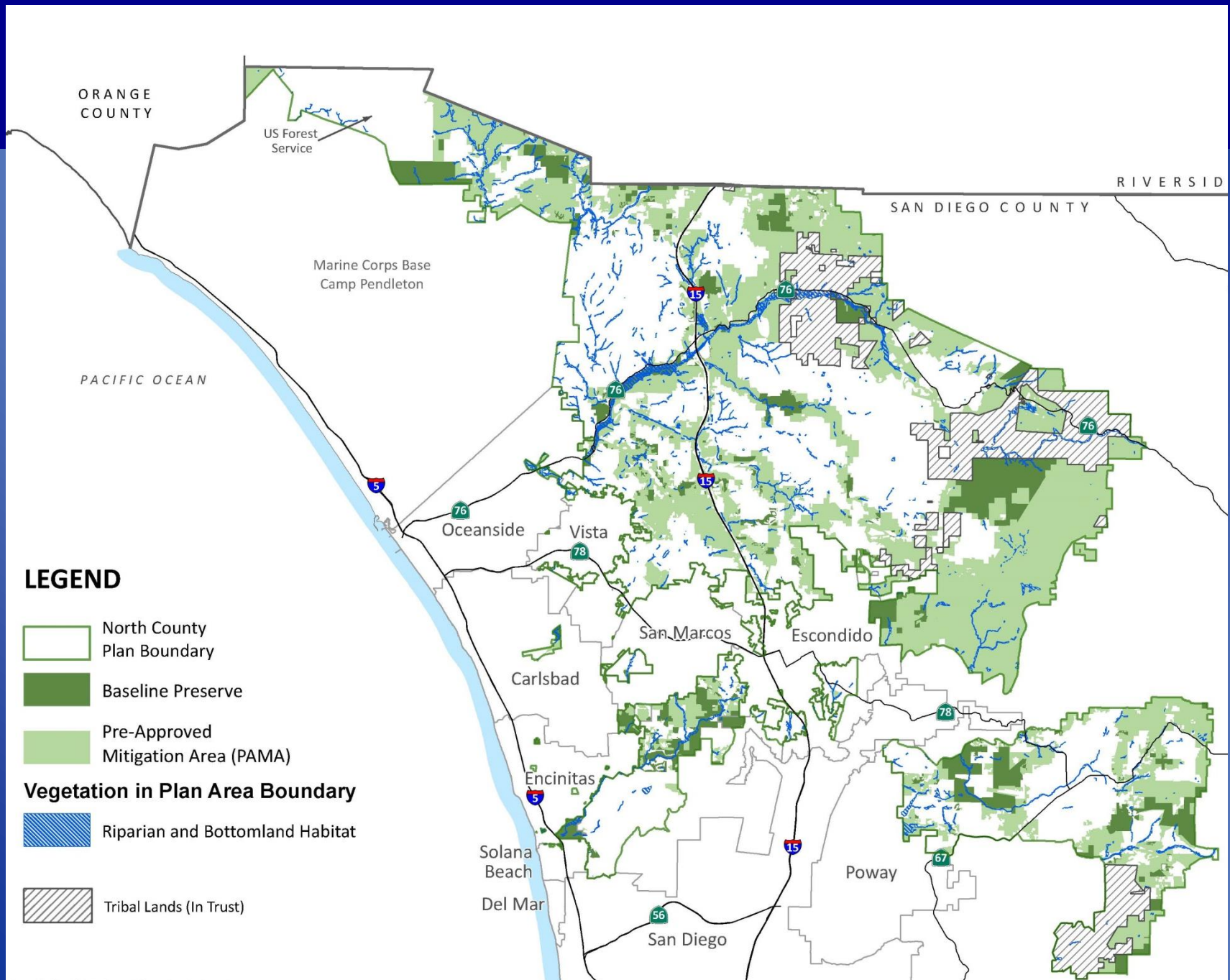


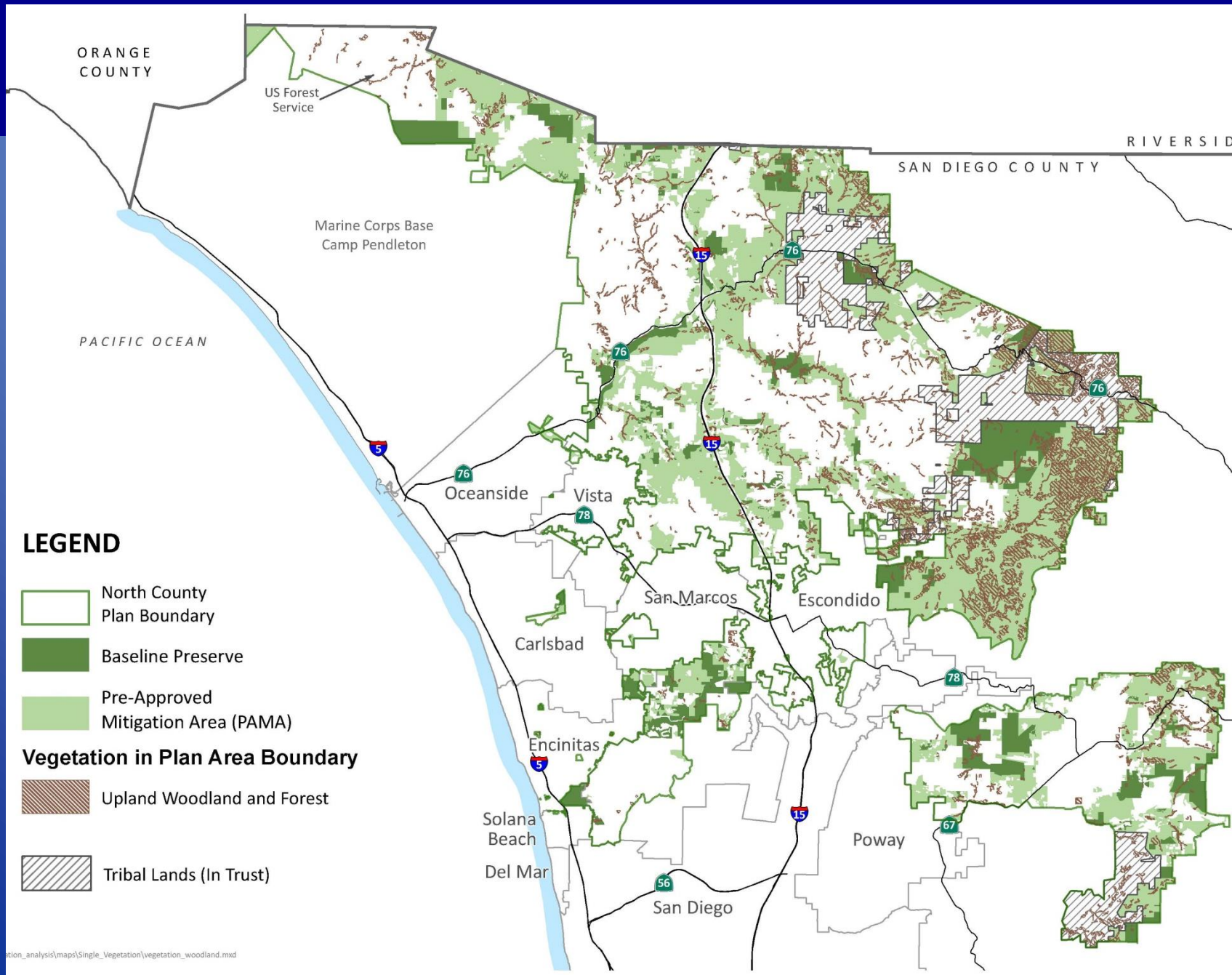


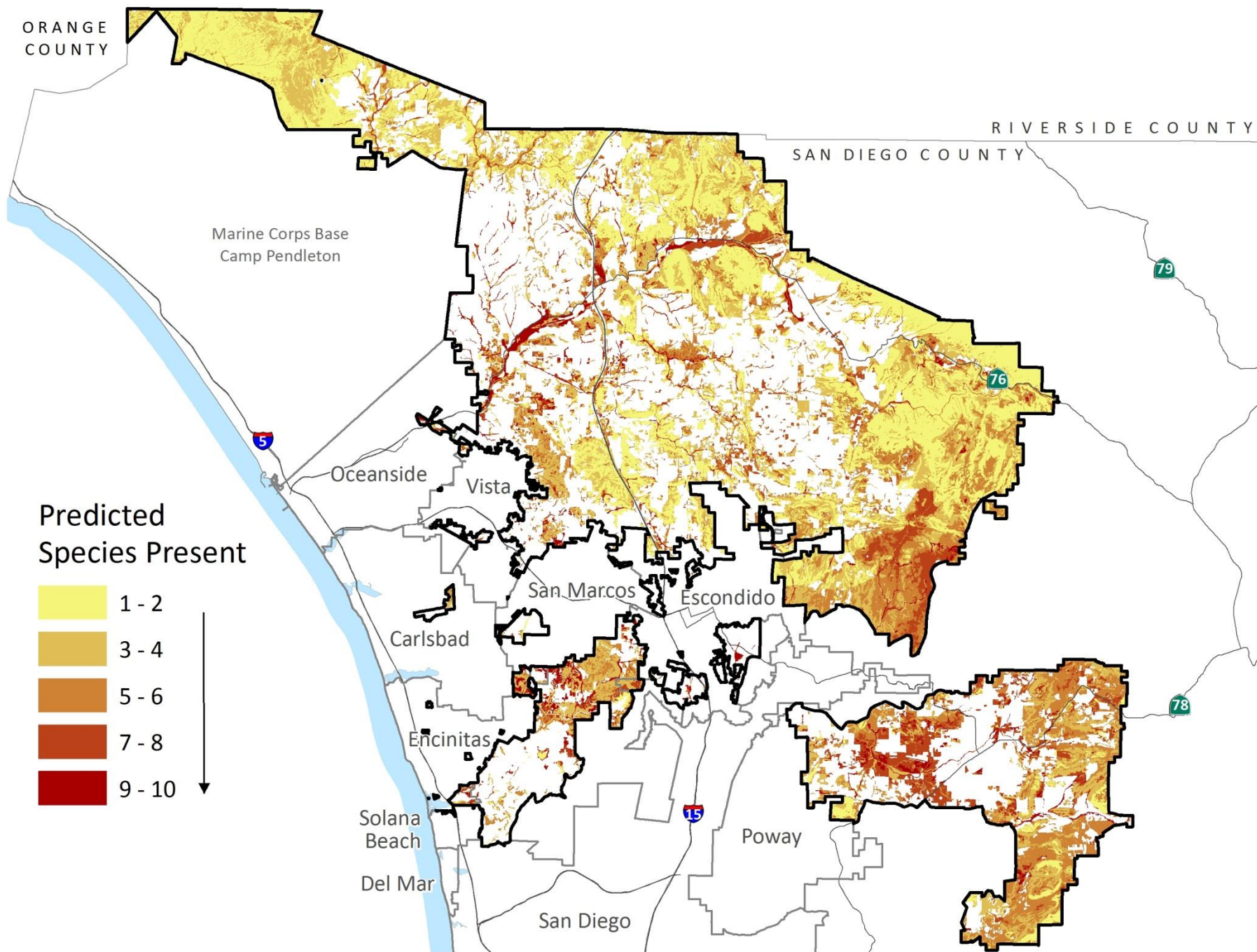




12/5/2016
 reference: P:\mncp_north\20160502_conservation_analysis\maps\Single_Vegetation\vegetation_vernal.mxd
 source: SanGIS, County of San Diego







ORANGE
COUNTY

RIVERSIDE COUNTY

SAN DIEGO COUNTY

Marine Corps Base
Camp Pendleton



PAMA

Predicted
Species Present



1 - 2



3 - 4



5 - 6



7 - 8



9 - 10



Oceanside

Vista

San Marcos

Escondido

Carlsbad

Encinitas

Solana
Beach

Del Mar

San Diego

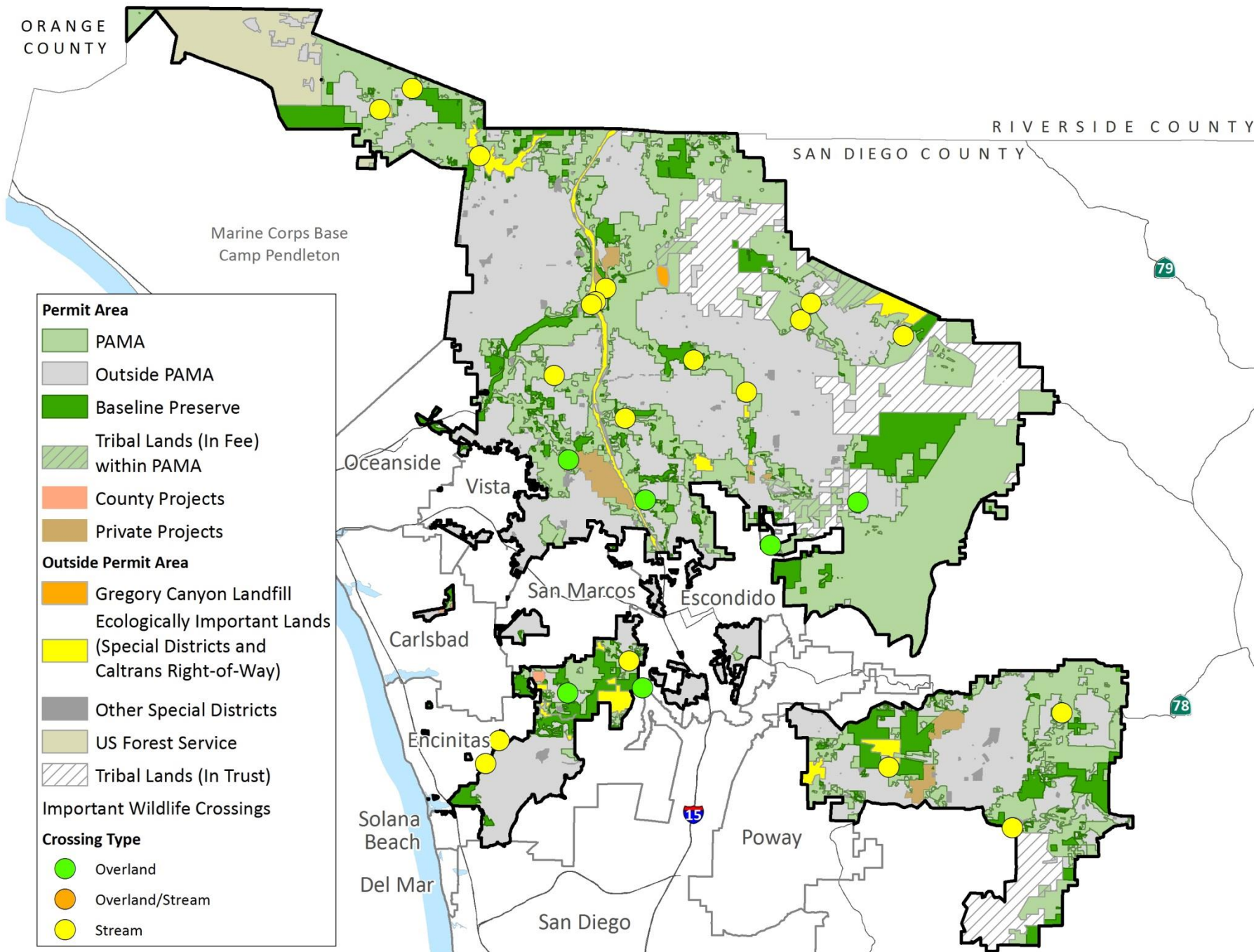
Poway

79

76

78

15



Continued PAMA Discussion



- Maps at the parcel level were provided to you last week
- Comments?

Continued Species Discussion



- Covered Species
- Watch List Species
- All Other Species

Species Evaluation - Criteria



1. Range
2. Listing Status
3. Impact
4. Data

Species Evaluation - Process



1. Individual species evaluation with Wildlife Agencies
 - Primary consideration: requirements for findings
2. Evaluated species needs for sustainability within Plan Area
3. Analyzed existing regulations that would otherwise protect the species
4. Ability to manage and monitor to the species level if covered

Continued Species Discussion



- Covered Species

- Will be “covered” by County’s permit for take authorization
- Projects will not need separate Wildlife Agency take authorization for potential impacts to these species

Continued Species Discussion



- Watch List Species

- None of these are listed on the California or Federal Endangered Species List
- Being “watched” because they have the potential to be listed in 50 years
- Analyzed in the EIR/EIS
- Would need to obtain take authorization, but we have a process to move these species to the covered list

Continued Species Discussion



- All Other Species
 - Either not on the California or Federal Endangered Species List or not within the Plan Area
 - Not likely to become listed within 50 years
 - Analyzed in the EIR/EIS

MSCP Take Coverage vs. Environmental Analysis



- Combined EIR/EIS will be prepared in support of North County Plan
- Impacts mitigated according to process and procedures established by Biological Mitigation Ordinance (BMO)
- BMO will provide mitigation specific to covered species and vegetation communities
- BMO included within EIR/EIS analysis – mitigation at vegetation community scale will be evaluated

MSCP Take Coverage vs. Environmental Analysis



- How it works – when a discretionary project requests approval:
 - Conduct biological analysis to determine species and vegetation communities present onsite
 - Apply mitigation ratios in BMO
 - Applicant conducts environmental analysis
 - County reviews for conformance with BMO

Watch to Covered Process



During Planning:

- County performed conservation analysis for Watch List species
- Scientific Review Panel will analyze
- EIR will contain an analysis of impacts

Watch to Covered Process



During Implementation

- County will update biological information
- County and others may obtain grants to study
- County will pursue partnership opportunities
- County RMPs will provide information

Watch to Covered Process



If a species becomes listed, to obtain coverage:

- County would update conservation analysis
- County and Wildlife Agencies would analyze data and coordinate on findings for take coverage
- County and Wildlife Agencies would amend Plan and accompanying documents
- County would amend Plan if additional measures are needed to provide coverage

Steering Committee Discussion



Covered Activities Introduction



Covered Activities:

- Activities covered by the permit
- All legal land development activities under County land use authority that occurs within Permit Area

Covered Activities Introduction



Covered Activities:

- Private projects and activities subject to County land use authority
- Public projects and activities undertaken by the County
- Projects and activities undertaken to implement Plan's conservation strategy

Closing Comments

