

North County Multiple Species Conservation Plan (North County Plan)

Stakeholder Working Group

October 25, 2021



North County Plan



Agenda

- Introductions
- Public Communication
- Project Status
- Key Plan Components to Discuss
 - Plan Area Revisions
 - Preliminary Preserve Design Approach
 - Covered Species List Updates
- Open Discussion



North County Plan



North County Plan Team

STAKEHOLDER WORKING GROUP

Matt Adams
Brad Bartlett
Hannah Gbeh
Doug Goad
Frank Landis
Rikki Schroeder
Dan Silver
Ann Van Leer
Jim Whalen

WILDLIFE AGENCIES

CDFW

David Mayer
Karen Drewe
Melanie Burlaza
Emily Gray
Alison Kalinowski

USFWS

Jonathan Snyder
Susan Wynn
Dimitri Pappas
Daniel Leavitt

COUNTY

PDS

Kathleen Flannery
Rami Talleh
Kelly Bray
Chelsea Oakes
Stephanie Neal
Melanie Casey

DPR

Brian Albright
Deb Mosley
Crystal Benham
Jennifer Price
Beth Principe

DPW

LeAnn Carmichael
Thomas Duffy

COUNSEL

Randall Sjoblom

ICF

David Zippin
Scott Fleury
Pat Atchison
Greg Nichols
Markus Spiegelberg



North County Plan



Public Communication

- 2-minute opportunity to address the North County Plan Team
- Requests to speak:
 - Eric Metz
 - Rao Anne
 - Dana Mottola
 - Tony Gurnoe
- If you did not RSVP to speak today but would like to provide staff with your comments, please email them to mscp@sdcounty.ca.gov

2:00

1:30

1:00

:30

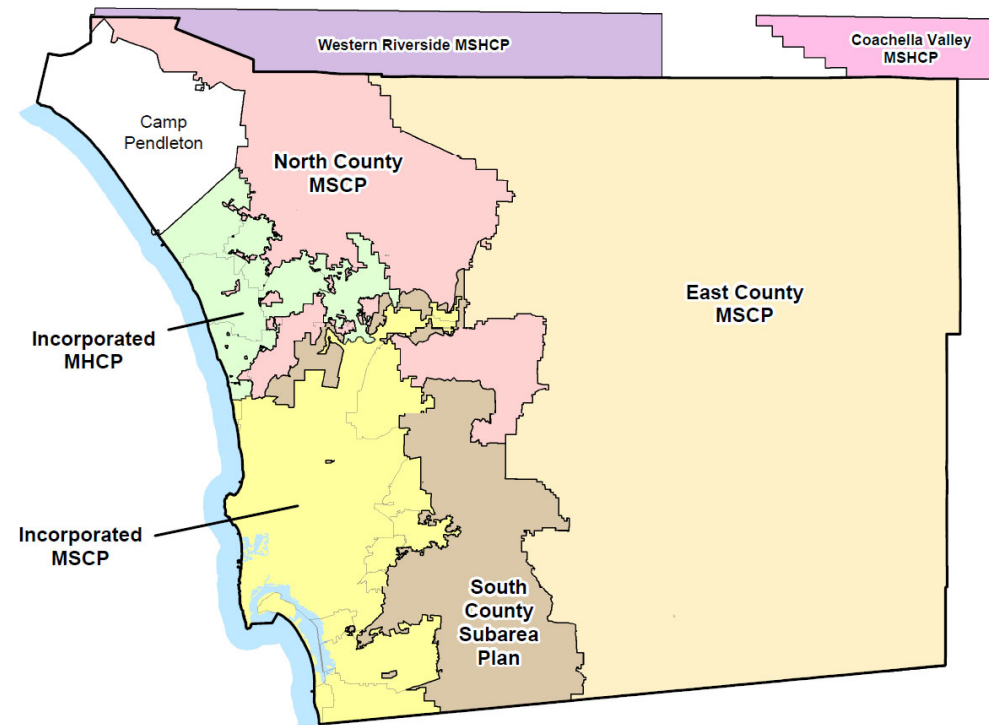


North County Plan



County MSCP Background

- Long-term, regional habitat conservation program
- Balance protection of biological resources with development and infrastructure
- Streamlines agency collaboration, assurances and permits



North County Plan



North County Plan History & Challenges

1998
Launch

2011
Included in
General Plan

2017
Draft
Presented

2019
Options
Assessed

2020
Board
Direction



North County Plan



Board of Supervisors' Direction

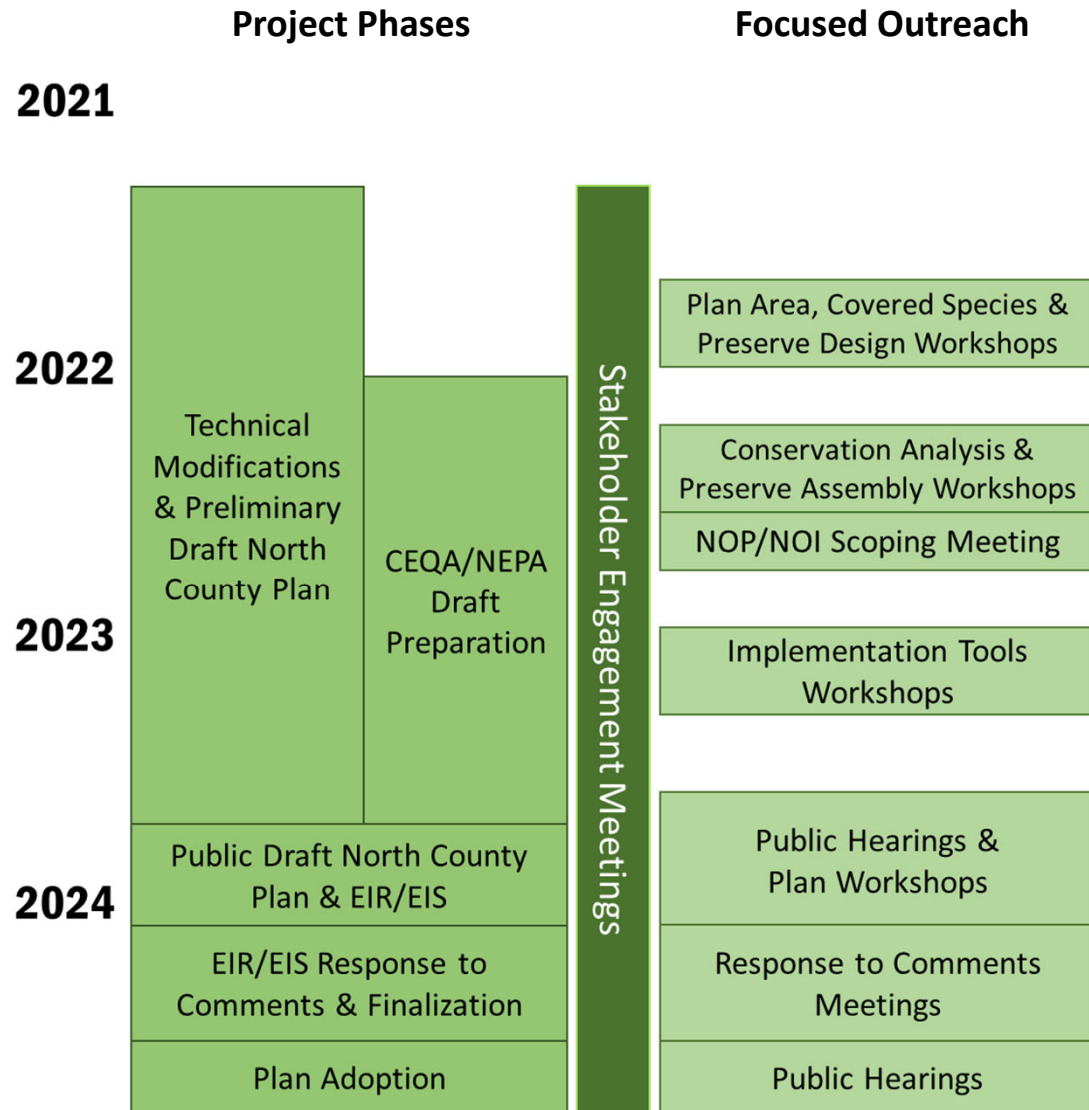
- In October 2020, the Board voted unanimously to direct County staff to proceed with preparation of an HCP/NCCP for the North County Plan Area
- Board also directed that Rancho Guejito not be part of the Plan
- Board's direction was informed by feedback from:
 - North County Plan Stakeholder Working Group
 - Individual North County Plan Stakeholders
 - General public, Community Planning Groups & Private Property Owners
 - Wildlife Agencies (USFWS and CDFW)
- County has contracted with ICF to move forward with Plan development



North County Plan



Project Schedule



Plan Area Revisions

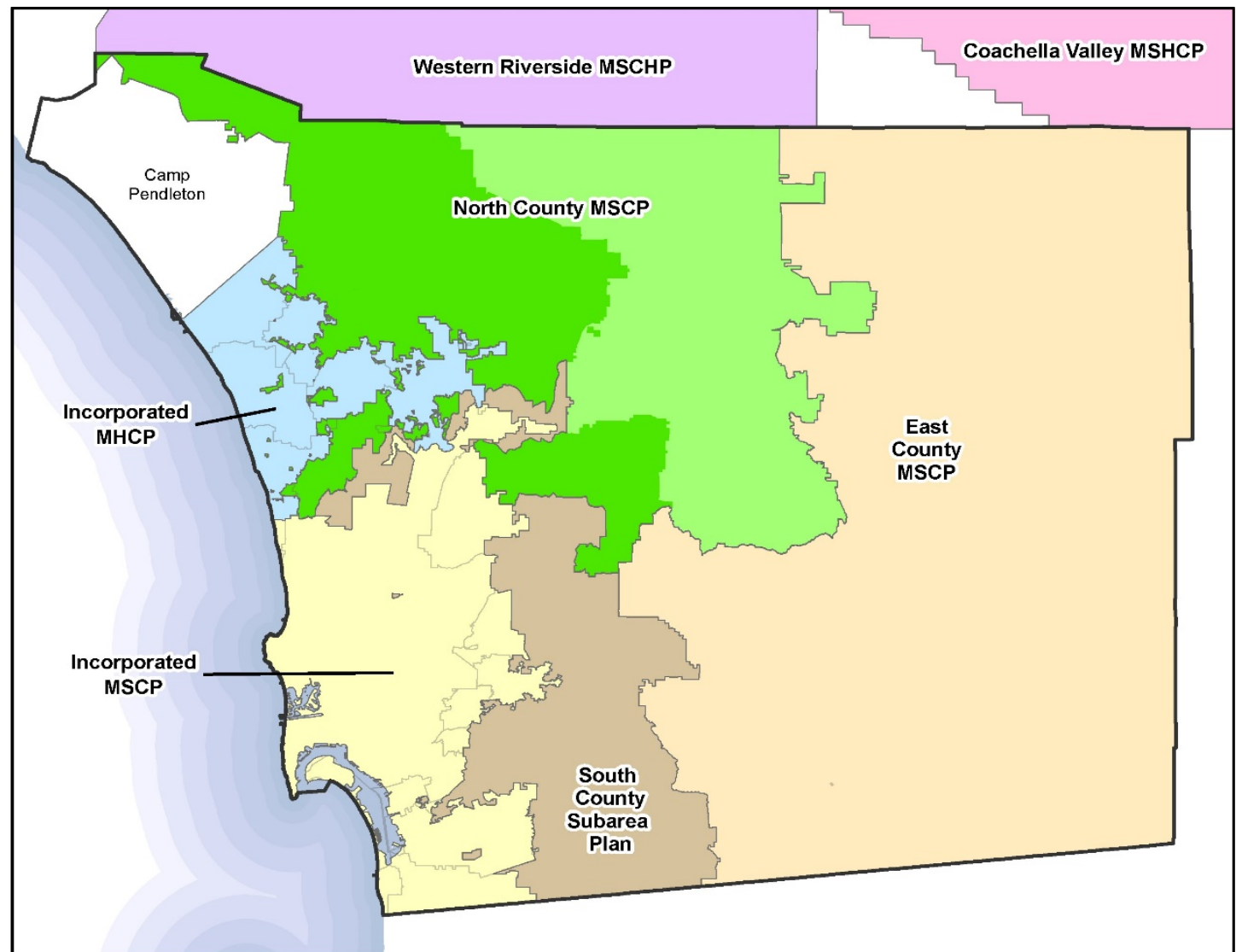
- Why make a change to the Plan Area?
 - Opportunity to rethink the Plan Area
 - Expand conservation areas
- Criteria used to draw Plan Area boundaries:
 - Watersheds
 - Baseline Preserve lands
 - Parcels and specific ownerships
 - Connectivity
 - Vegetation and covered species distribution
- Four scenarios were evaluated and reviewed
- Final draft Plan Area recommended:
 - Includes San Luis Rey, Temecula Creek, San Dieguito and San Diego River Watersheds
 - Eastern extent to the mountain/desert divide
 - Southern extent includes Cuyamaca and Barona Area



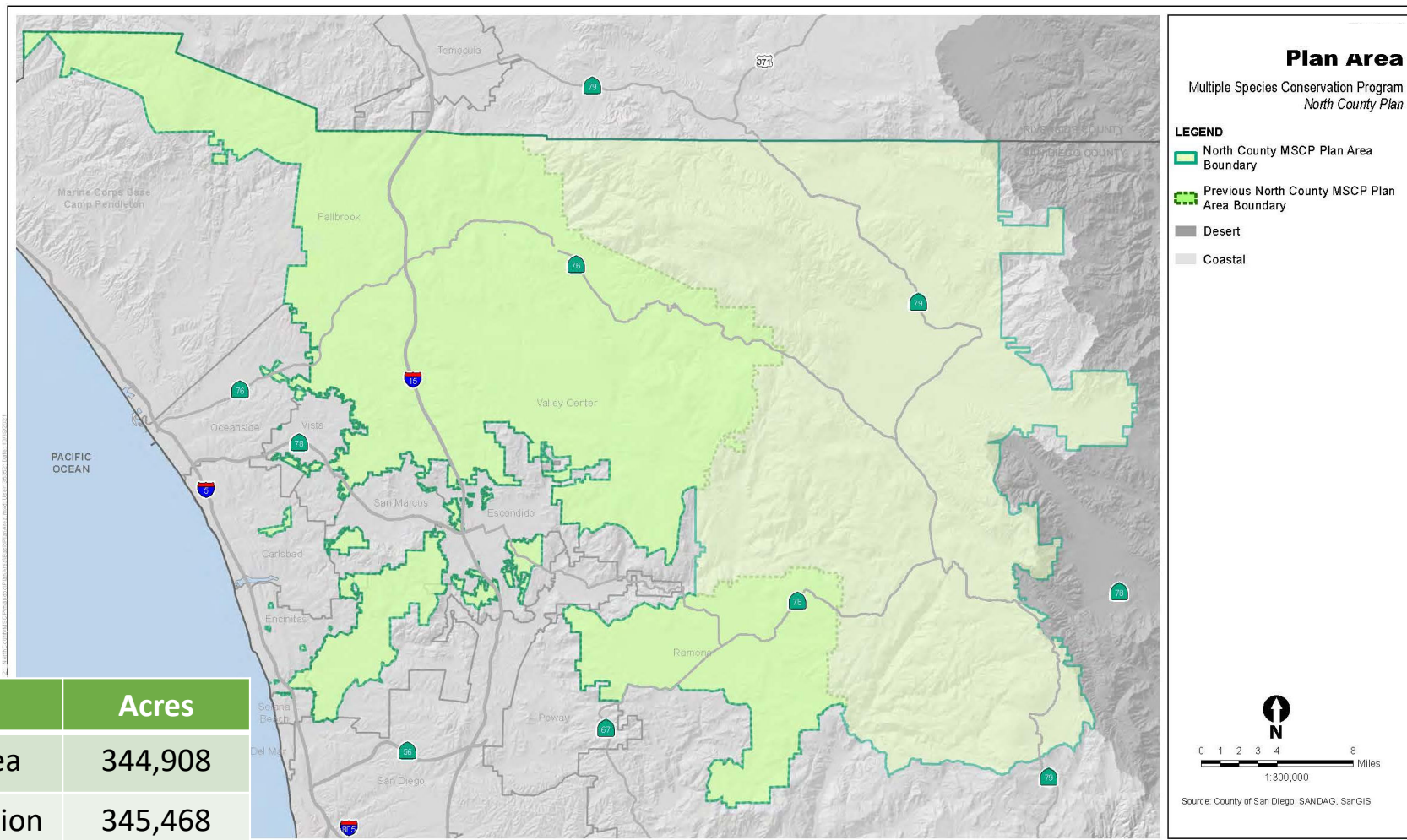
North County Plan



Revised Plan Area & Other Regional Conservation Plans

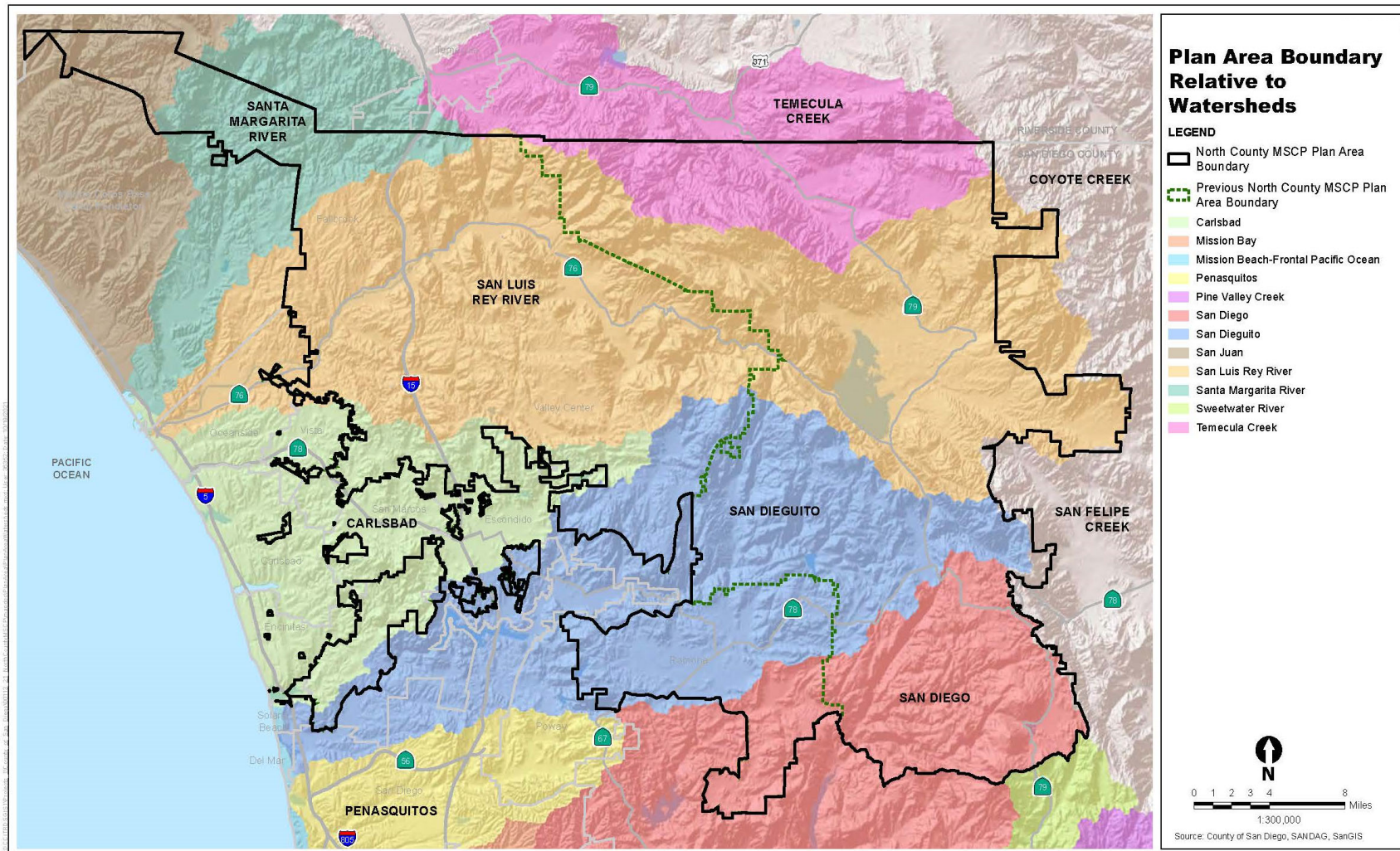


Revised Plan Area Boundary



Plan Area	Acres
Previous Plan Area	344,908
Plan Area Expansion	345,468
Total Plan Area	690,376

North County Watersheds



Plan Area Adjustment Advantages

- Adds large blocks of undisturbed habitat to the Plan Area
- Expands east-west connection across the full extent of the North County Plan Area
- Greater ability to address climate change with elevation gradients
- Connects Ramona to the rest of the Plan Area
- Includes important critical habitat and core populations for a number of key species
- Offset the loss of habitat conservation opportunities on Rancho Guejito
- Expands Covered Species list by a reasonable number (4 species)
- Adds important County DPR Preserves (Santa Ysabel, Vulcan Mtn) to baseline preserves
- Includes opportunities for coverage of residential and agriculture expansion in rural lands



North County Plan



Plan Area vs. Permit Area

- **Plan Area**

- Geographic boundary
- Includes lands that are not subject to the Plan

- **Permit Area**

- Land within the Plan Area that is subject to the Plan is called the **Permit Area**:

- County-owned lands
- Private Property
- Some public lands (CDFW, BLM)

- **Lands Outside the Permit Area** that are not subject to the Plan:

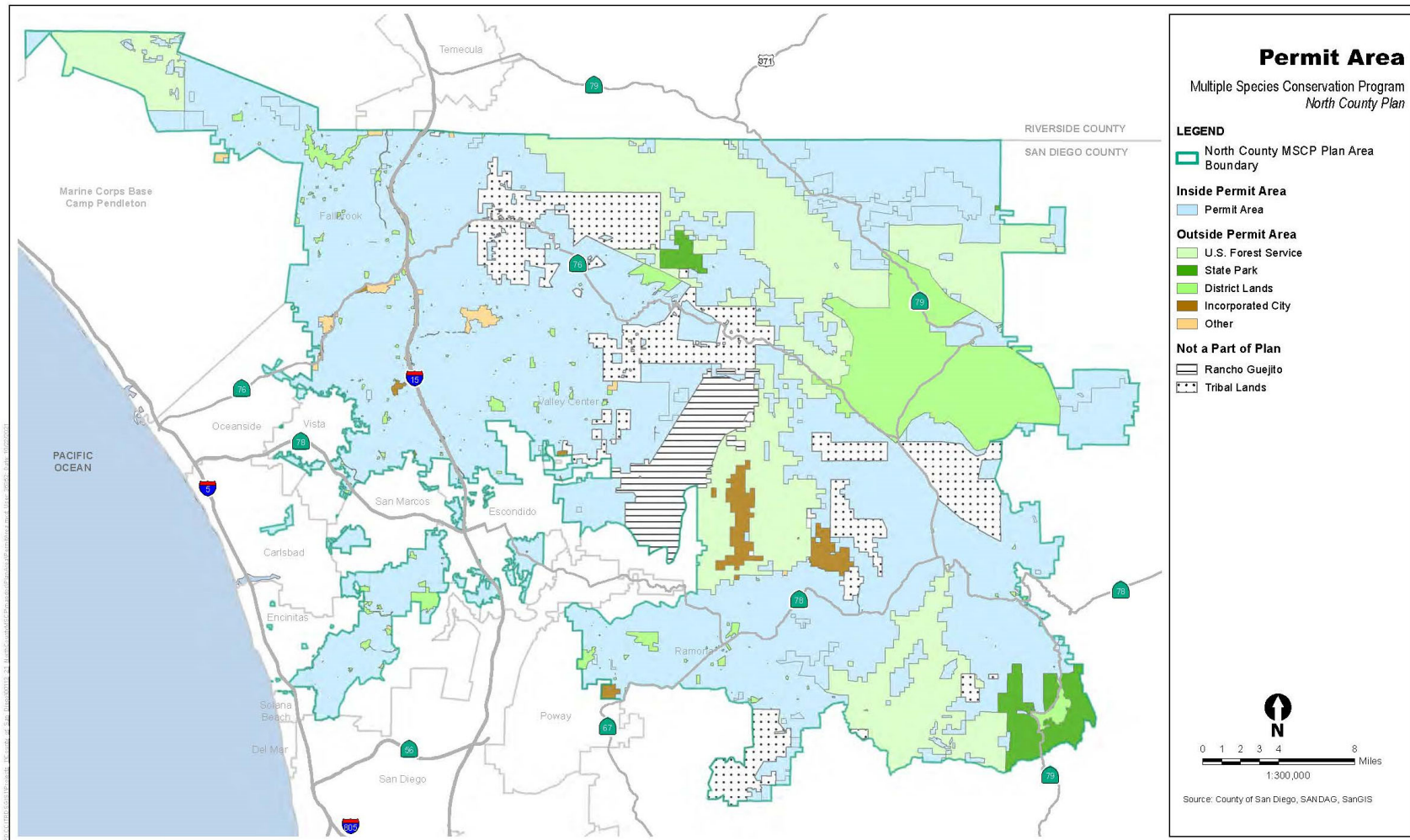
- Cities
- USFS
- Special Districts
- State Parks
- Rancho Guejito
- Tribal Lands



North County Plan



Revised Permit Area



Permit Area Acreage Comparison

Land Ownership	Original 2017 Plan Area				Modified 2017 Plan Area				Additional Expanded Plan Area				Total New Plan Area			
	Inside Permit Area	Outside Permit Area	Not A Part	Total 2017 Plan Area	Inside Permit Area	Outside Permit Area	Not A Part	Total Modified 2017 Plan Area	Inside Permit Area	Outside Permit Area	Not A Part	Total Additional Expanded Plan Area	Inside Permit Area	Outside Permit Area	Not A Part	Total New Plan Area
County Owned Lands and Private Lands	270,198				270,198				137,590				407,788			
Rancho Guejito	20,282						20,282								20,282	
U.S. Forest Service		11,815				11,815				115,320				127,135		
State Parks, Special Districts, Cities, Other		9,330				9,330				65,224				74,554		
Tribal Lands			33,283				33,283				27,334				60,617	
Total Acres	290,480	21,145	33,283	344,908	270,198	21,145	53,565	344,908	137,590	180,544	27,334	345,468	407,788	201,689	80,899	690,376
Percent	84%	6%	10%	100%	78%	6%	16%	100%	41%	52%	8%	100%	59%	29%	12%	100%

Preserve Design Approach

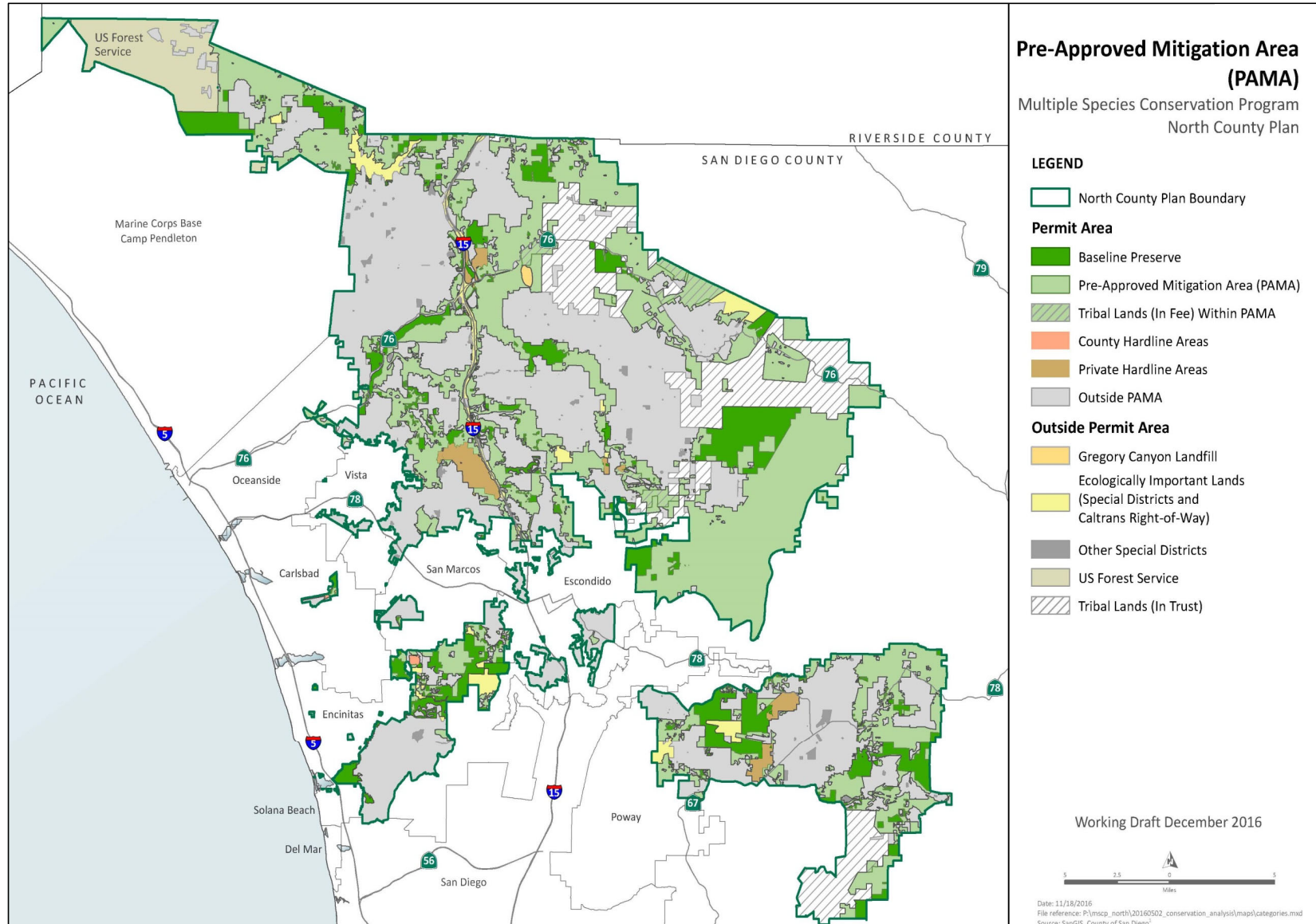
- Merge North County Pre-approved Mitigation Areas (PAMA) and East County Focused Conservation Area (FCA)
 - Rename: Priority Conservation Area (PCA)
- Advantages:
 - Maximizes value to previous work to date
 - Preserve boundaries previously vetted
 - Fastest and most cost-effective strategy
 - Solid science foundation from North and East County preserve design methods



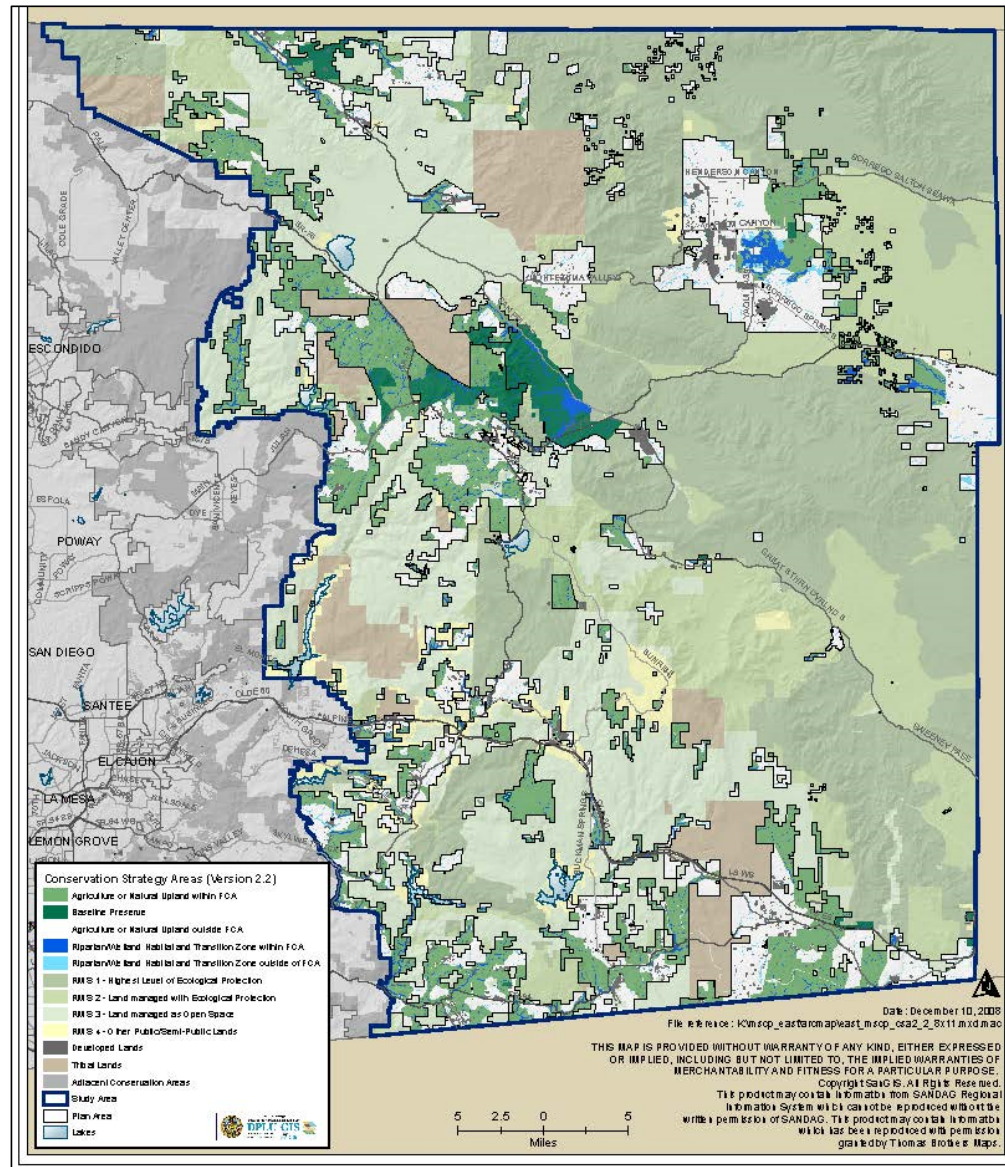
North County Plan



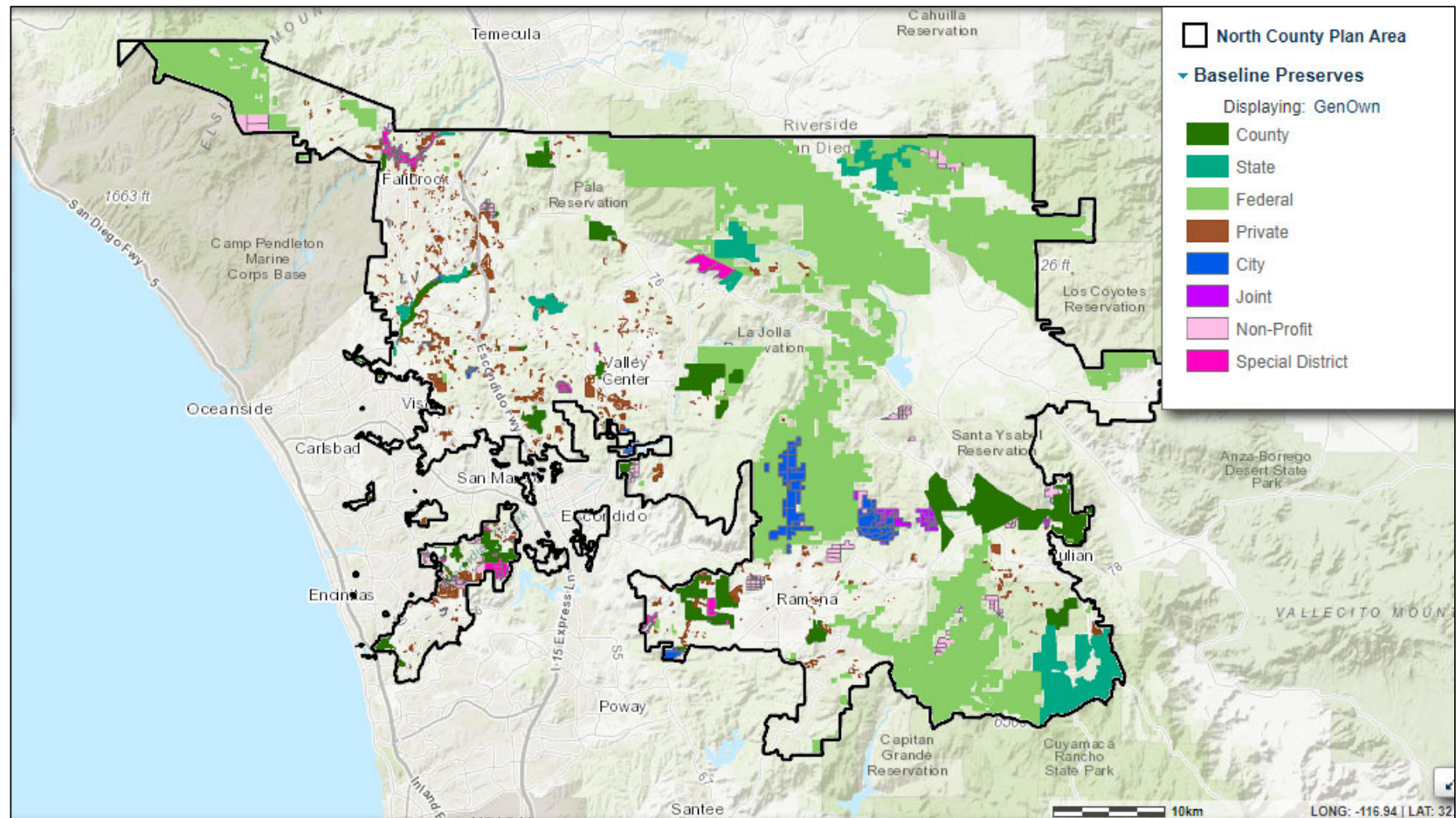
2017 Draft North County Plan Pre-Approved Mitigation Area (PAMA)



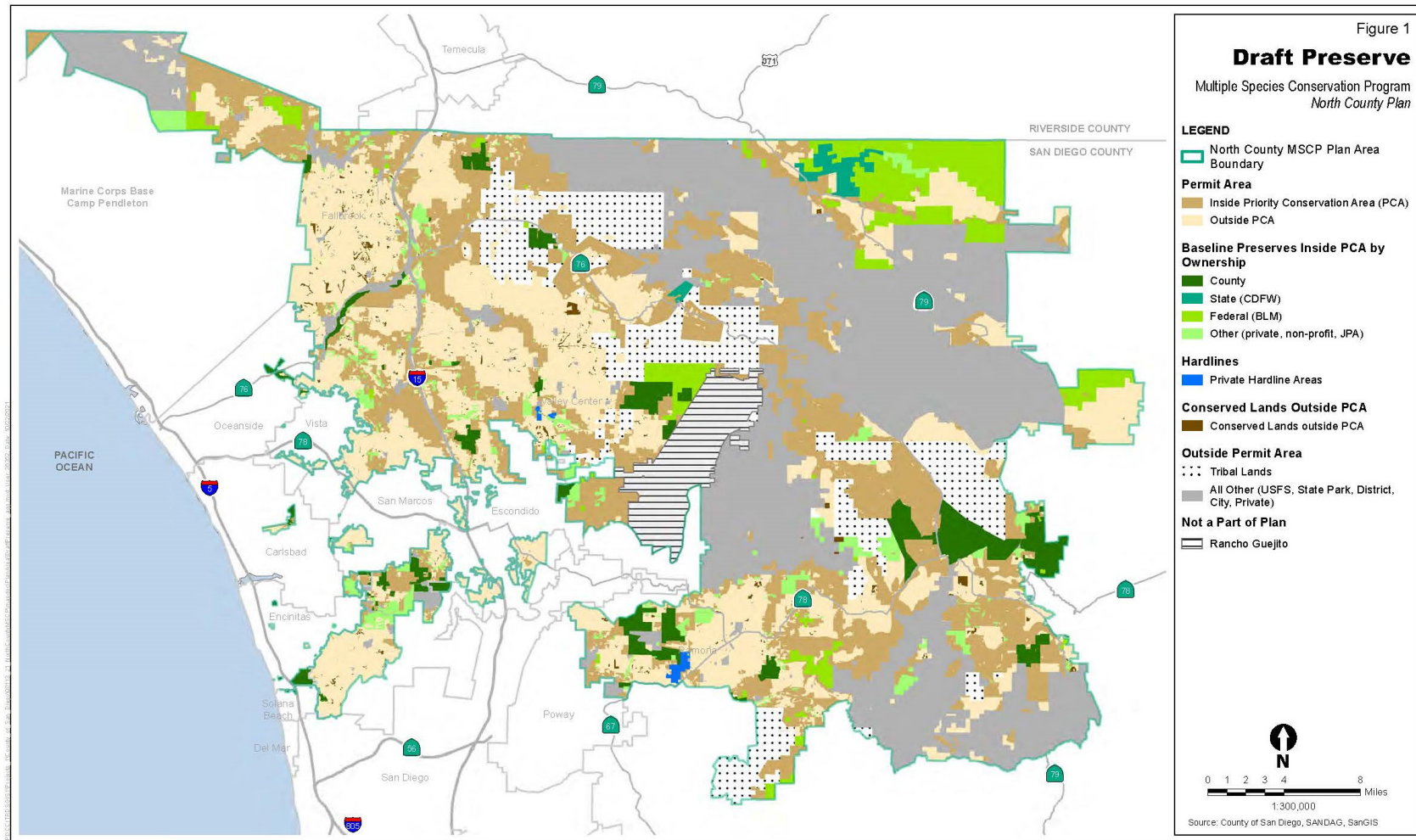
2008 Draft East County Plan Focused Conservation Area (FCA)



Baseline Preserves



Draft Preserve



Ongoing Data Updates

- **Baseline Preserves**
 - Collected data for extended Plan Area
 - Compared with SANDAG Conserved Lands database
 - Input more recent mitigation banks
 - County recorded easements
 - Additional data collection on management status occurring on private preserves
- **Permit Area**
 - Outreach with Cities and Special Districts ongoing
- **Priority Conservation Areas**
 - Adjust with more current vegetation/land cover mapping



North County Plan



Ongoing Preserve Design Review Steps

- **Conservation Assumptions for Priority Conservation Area**
 - Set appropriate conservation assumptions
 - Calculations by Plan Area and Planning Units
- **Broader Ecological Factors**
 - Connectivity
 - Climate Change factors
 - Patch Size
- **Habitat and Species Information**
 - Natural Communities
 - Species Habitat Evaluation Models
 - Species Suitable Habitat and Known Occurrences
- **Land Use Planning Factors**
 - General Plan
 - Parcelization
 - Future Development Analysis



North County Plan



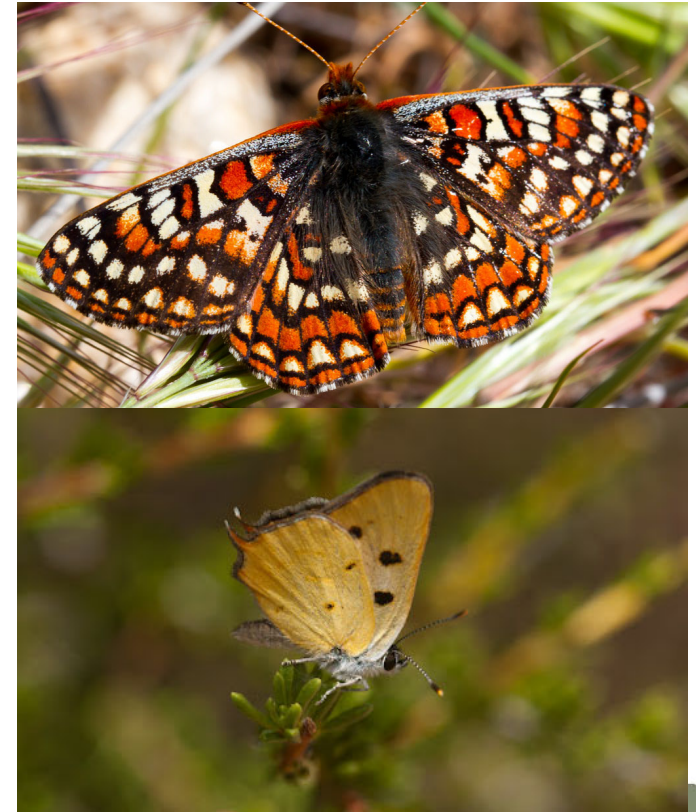
Revised Covered Species List

Invertebrates	Birds	Plants
Riverside fairy shrimp	Coastal cactus wren	Del Mar manzanita
San Diego fairy shrimp	Coastal California gnatcatcher	Encinitas baccharis
Amphibians/Reptiles	Golden eagle	Engelmann oak
Arroyo toad	Least Bell's vireo	San Diego ambrosia
Western spadefoot toad	Southwestern willow flycatcher	San Diego button-celery
Southwestern pond turtle	Tricolored blackbird	San Diego thornmint
Coast horned lizard	Western burrowing owl	Spreading navarretia
California red-legged frog*	Western yellow-billed cuckoo	Thread-leaved brodiaea
Mammals	Bald eagle*	Mojave tarplant*
Stephens' kangaroo rat		
Pallid bat		Species Removed from 2017 List:
Townsend's big-eared bat		Orcutt's spineflower
Mountain lion*		

New Species Proposed*

Pending Covered Species - Butterfly HCP

- Harbison's dun skipper
- Hermes copper butterfly
- Quino checkerspot butterfly
- Laguna mountain skipper



North County Plan



Other Species Considered But Not Included

2017 Watchlist Species (FESA/CESA)	Other Species Considered (FESA/CESA)	
Red-diamond rattlesnake	Arroyo chub	Nevin's barberry (FE/SE)
Coast range newt	Banana slug	Cuyamaca larkspur
Rufous-crowned sparrow	Crotch bumble bee (--/SPE)	Cuyamaca Lake downingia (--/SE)
Grasshopper sparrow	Glossy snake	Mission canyon bluecup
Bell's (sage) sparrow	So. Mtn. yellow-legged frog (FE/SE)	Parish's meadowform (--/SE)
Northern harrier	Two-striped garter snake	California Orcutt grass (FE/SE)
San Diego black-tailed jackrabbit	South coast garter snake	Gander's ragwort
American badger	Aguanga/Earthquake kangaroo rat	San Bernardino blue grass (FE/--)
California adolphia	Southern mule deer	
Rainbow manzanita		
Parish's brittlescale		
Wart-stemmed ceanothus		
Chaparral beargrass		

FE: Federally Endangered

SE: State Endangered

SPE: State Proposed Endangered

Next Steps

- Outreach on Today's Topics
 - Tribal Consultation
 - Public Engagement
 - Community Planning Groups
 - Industry Groups
- Plan Development
 - Preserve Buildout Analysis
 - Conservation Analysis
 - Covered Activities & Exemptions
 - Preserve Assembly Tools

Next Stakeholder Working Group Meeting – Spring 2022



North County Plan



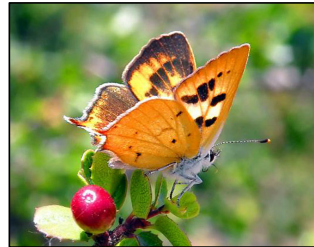
Questions and Comments



Project Contact: Chelsea Oakes
MSCP@sdcounty.ca.gov
(858) 505-6677



Project website:
<https://www.sandiegocounty.gov/content/sdc/pds/mscp/nc.html>



North County Plan

