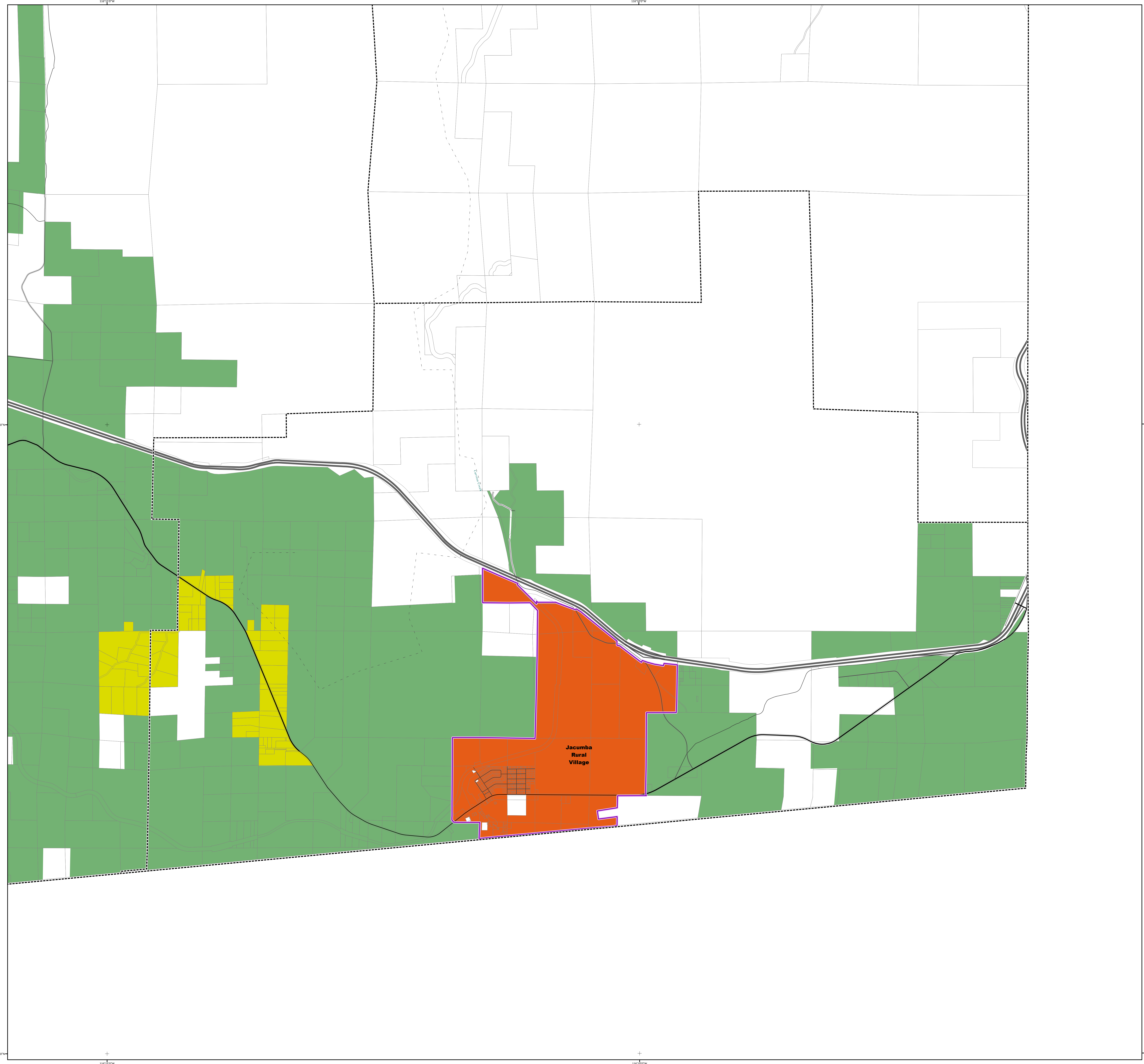




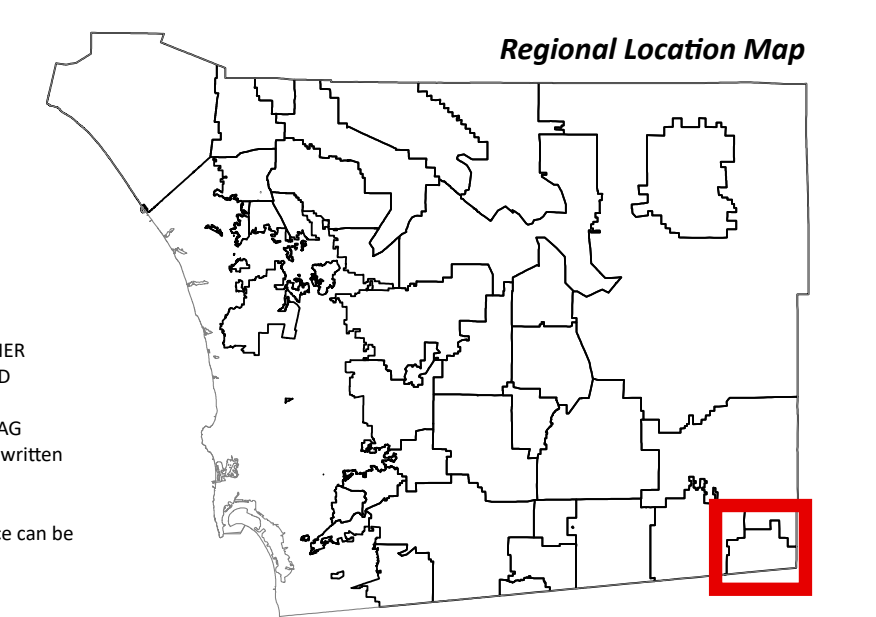
GENERAL PLAN
Jacumba
Subregional Group Area

Regional Category Map

- Village
- Rural
- Semi-Rural
- Rural Village Boundary
- Special Study Area
- Village Boundary
- Parcels
- Lakes
- County Water Authority Boundary
- Planning Boundary



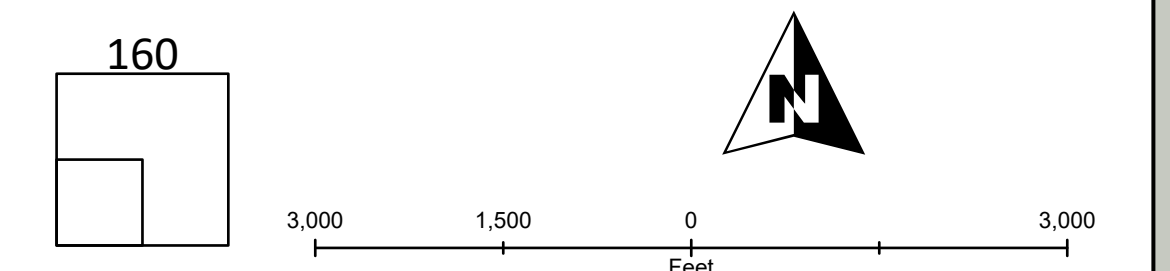
Map Prepared By:
LUEGGIS
Local Area & Regional Office
 Geographic Information Services



Coordinates: NAD83 Feet
 THIS MAP/DATA IS PROVIDED WITHOUT WARRANTY OF ANY KIND, EITHER EXPRESS OR IMPLIED, INCLUDING BUT NOT LIMITED TO, THE IMPLIED WARRANTIES OF MERCHANTABILITY AND FITNESS FOR A PARTICULAR PURPOSE. Note: This product may contain information from the SANDAG Regional Information System which cannot be reproduced without the written permission of SANDAG.

Copyright SanGIS 2016 - All Rights Reserved. Full text of this legal notice can be found at: http://www.sandag.org/legal_notice.htm

Source: County of San Diego, SanGIS, SANDAG
 Document Path: S:\land_use\app\gdac_maps\official_maps\apn\general_plan_cw.aprx



Map Date: 3/6/2026