

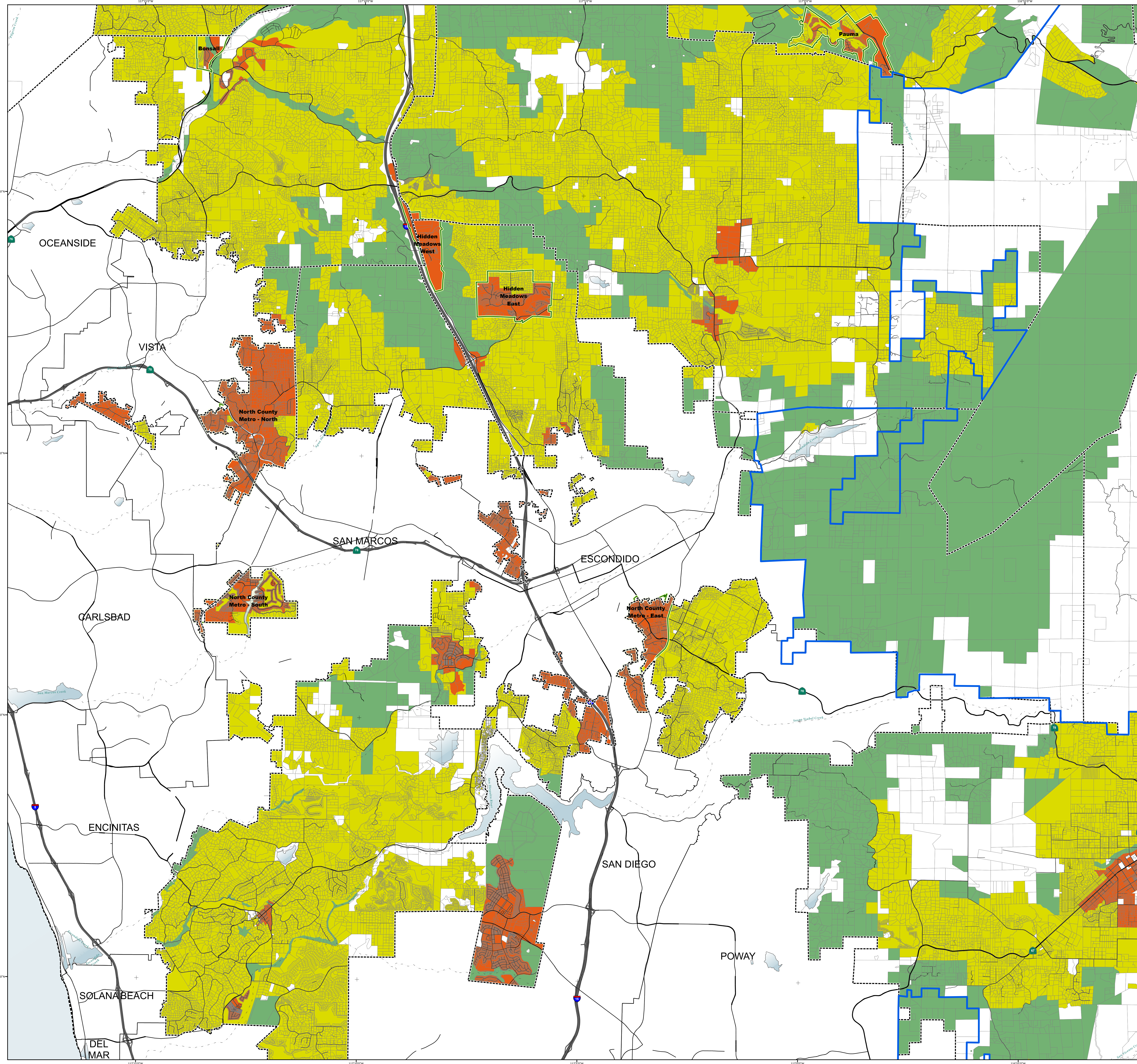


# North County Metro

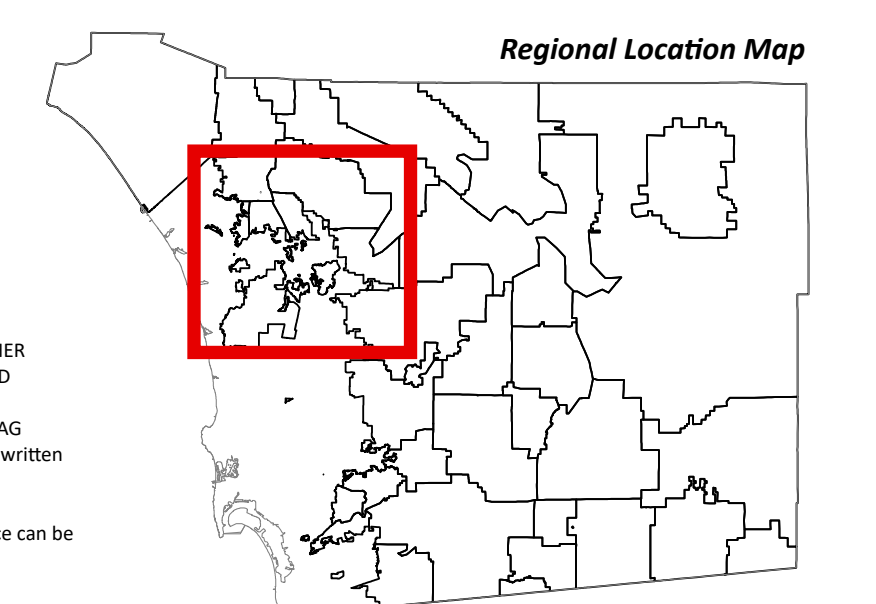
Subregional Planning Area

### Regional Category Map

- Village
- Rural
- Semi-Rural
- Rural Village Boundary
- Special Study Area
- Village Boundary
- Parcels
- Lakes
- County Water Authority Boundary
- Planning Boundary

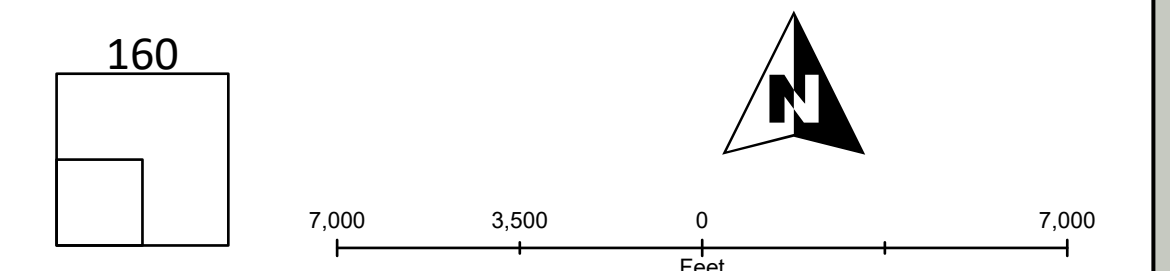


Map Prepared By:  
**LUFGIS**  
 LUGGIS  
 County of San Diego  
 Geographic Information Services



Coordinates: NAD83 Feet  
 THIS MAP/DATA IS PROVIDED WITHOUT WARRANTY OF ANY KIND, EITHER EXPRESS OR IMPLIED, INCLUDING BUT NOT LIMITED TO, THE IMPLIED WARRANTIES OF MERCHANTABILITY AND FITNESS FOR A PARTICULAR PURPOSE. Note: This product may contain information from the SANDAG Regional Information System which cannot be reproduced without the written permission of SANDAG.  
 Copyright SanGIS 2016. All Rights Reserved. Full text of this legal notice can be found at: [http://www.sandag.org/legal\\_notice.htm](http://www.sandag.org/legal_notice.htm)

Source: County of San Diego, SanGIS, SANDAG  
 Document Path: S:\land\_use\appdata\_maps\official\_map\app\general\_plan\_cw.aprx



Map Date: 3/3/2026