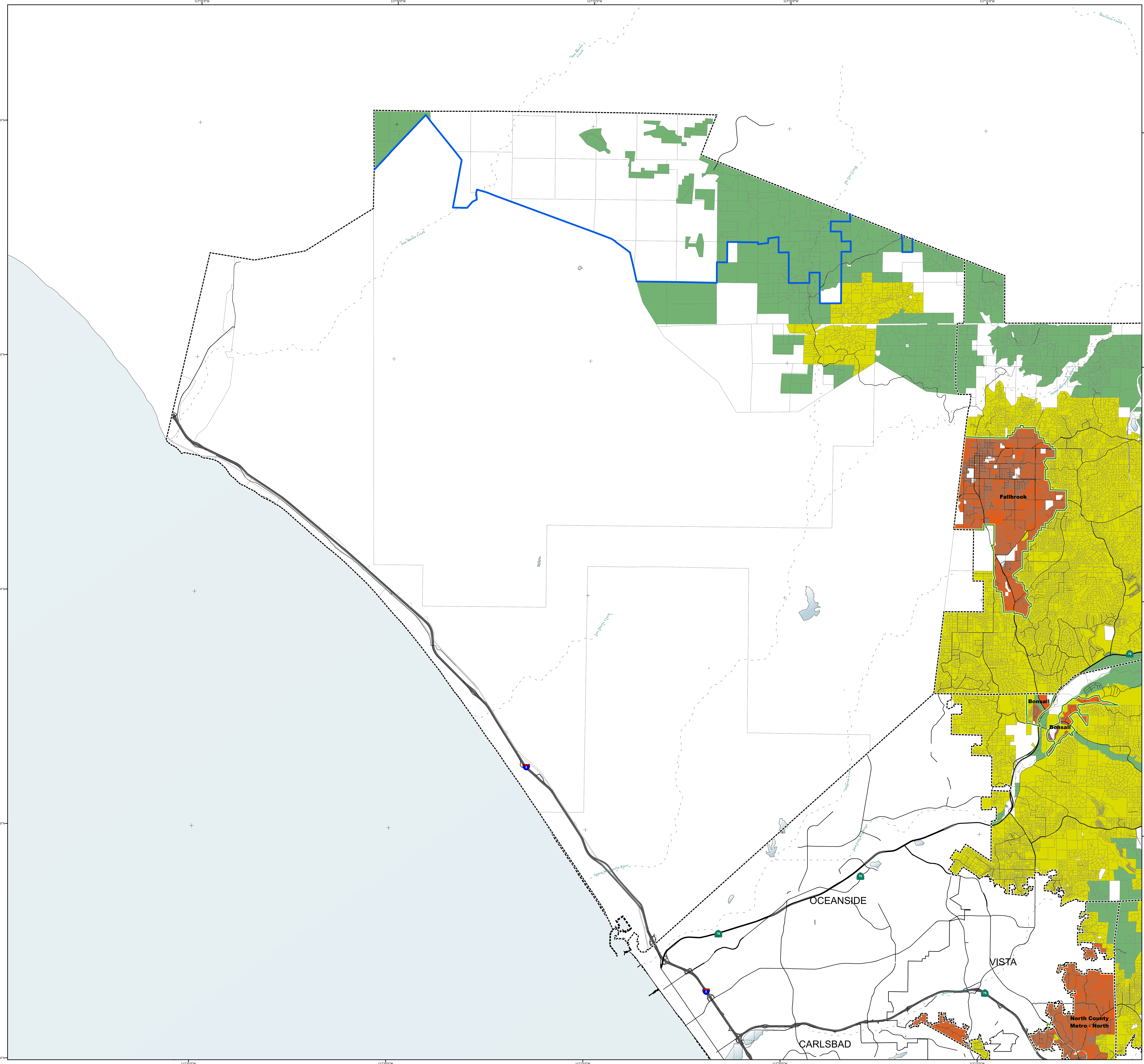




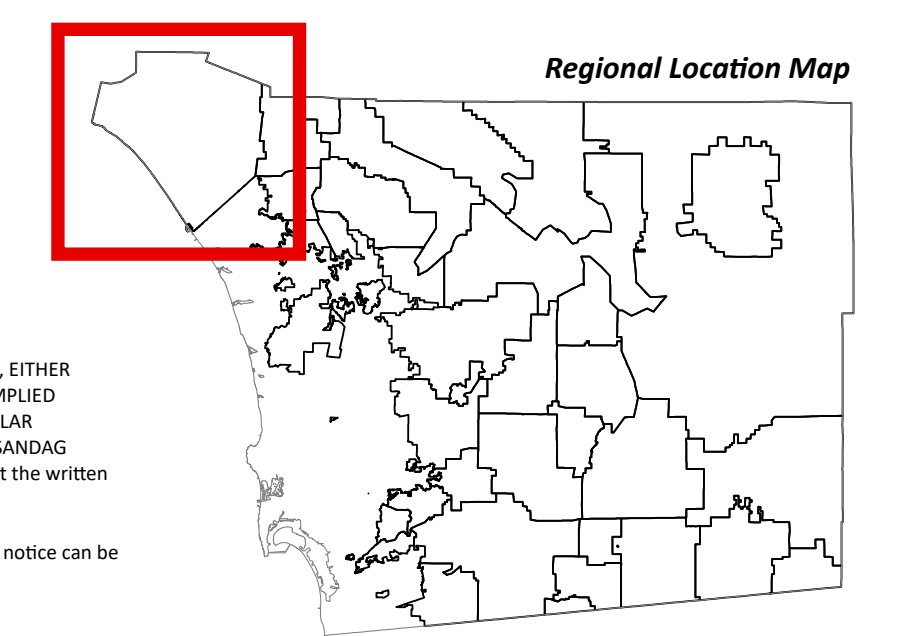
GENERAL PLAN
Pendleton - De Luz
Community Planning Area

Regional Category Map

- Village
- Rural
- Semi-Rural
- Rural Village Boundary
- Special Study Area
- Village Boundary
- Parcels
- Lakes
- County Water Authority Boundary
- Planning Boundary

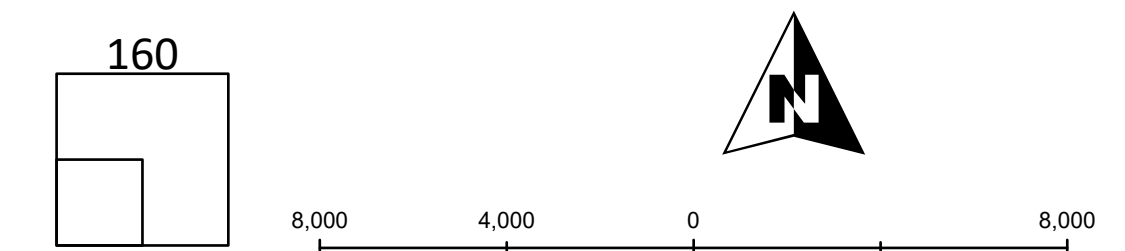


Map Prepared By:
LUEGGIS
Geographic Information Services



Coordinates: NAD83 Feet
THIS MAP/DATA IS PROVIDED WITHOUT WARRANTY OF ANY KIND, EITHER EXPRESSED OR IMPLIED, INCLUDING BUT NOT LIMITED TO, THE IMPLIED WARRANTIES OF MERCHANTABILITY AND FITNESS FOR A PARTICULAR PURPOSE. Note: This product may contain information from the SANDAG Regional Information System which cannot be reproduced without the written permission of SANDAG.
Copyright SanGIS 2016. All Rights Reserved. Full text of this legal notice can be found at: http://www.sandag.org/legal_notice.htm

Source: County of San Diego, SanGIS, SANDAG
Document Path: S:\land_use\gpp\update_maps\official_map\apn\general_plan_cw.aprx



Map Date: 2/26/2016