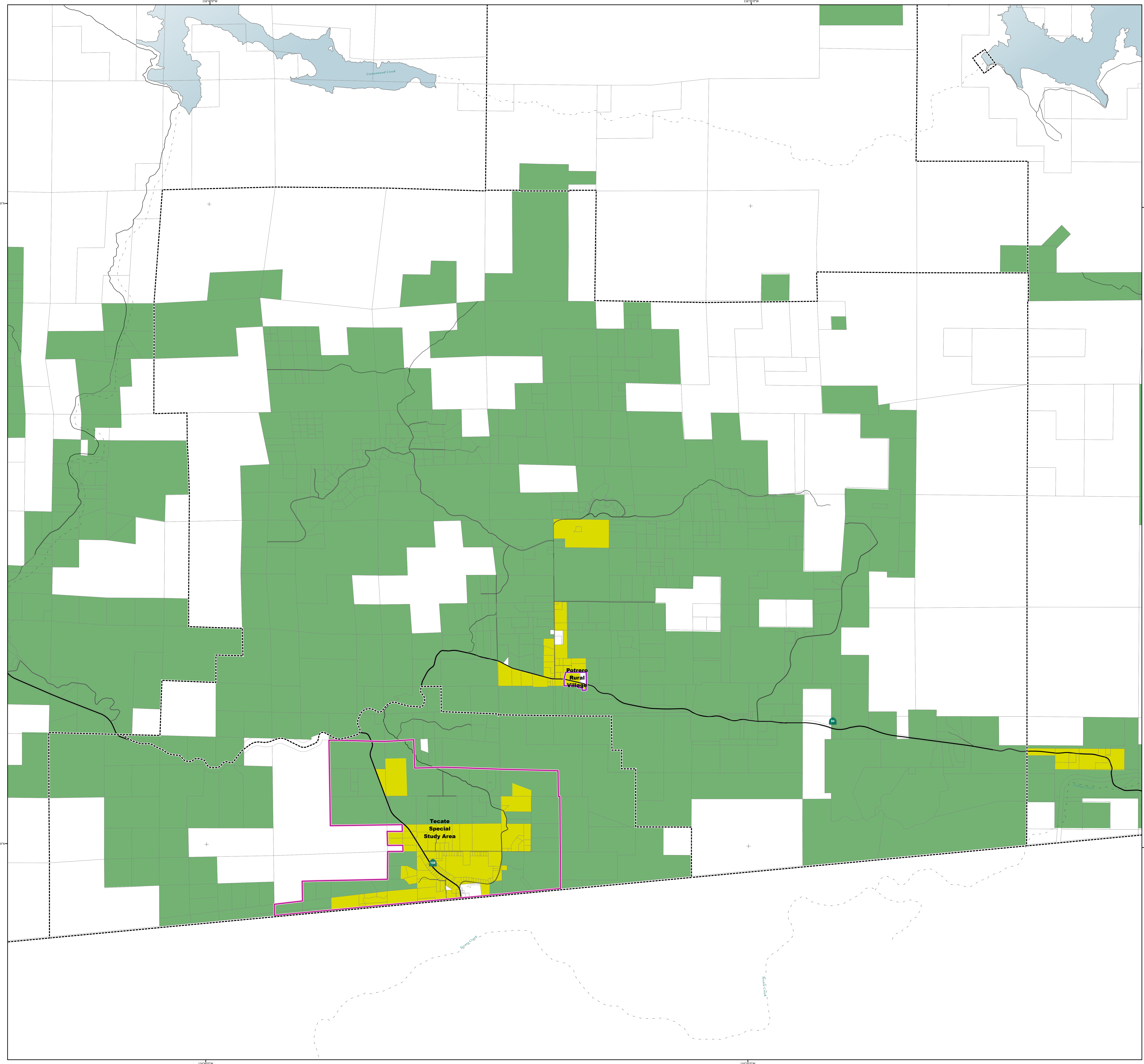




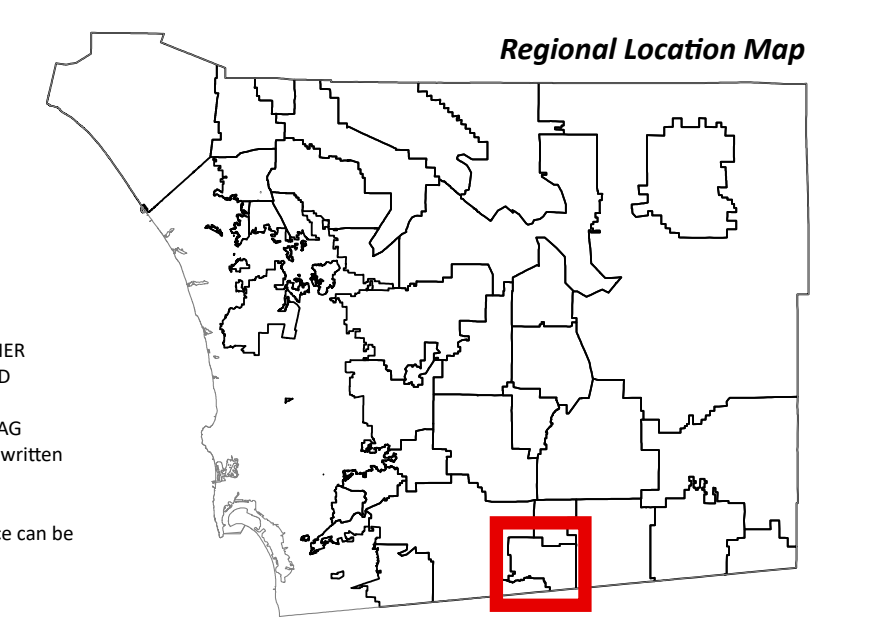
GENERAL PLAN  
**Potrero**  
Subregional Group Area

Regional Category Map

- Village
- Rural
- Semi-Rural
- Rural Village Boundary
- Special Study Area
- Village Boundary
- Parcels
- Lakes
- County Water Authority Boundary
- Planning Boundary



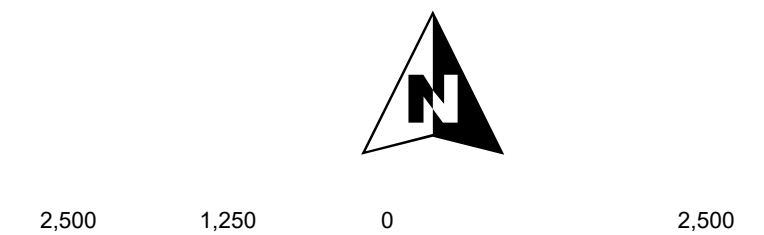
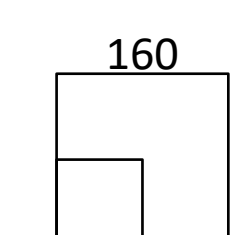
Map Prepared By:  
**LUEGGIS**  
Landscape Urban Planning & Design



Coordinates: NAD83 Feet  
THIS MAP/DATA IS PROVIDED WITHOUT WARRANTY OF ANY KIND, EITHER EXPRESS OR IMPLIED, INCLUDING BUT NOT LIMITED TO, THE IMPLIED WARRANTIES OF MERCHANTABILITY AND FITNESS FOR A PARTICULAR PURPOSE. Note: This product may contain information from the SANDAG Regional Information System which cannot be reproduced without the written permission of SANDAG.

Copyright SanGIS 2016 - All Rights Reserved. Full text of this legal notice can be found at: [http://www.sandag.org/legal\\_notice.htm](http://www.sandag.org/legal_notice.htm)

Source: County of San Diego, SanGIS, SANDAG  
Document Path: S:\land\_use\app\update\_maps\official\_map\app\general\_plan\_cw.aprx



Map Date: 3/6/2026