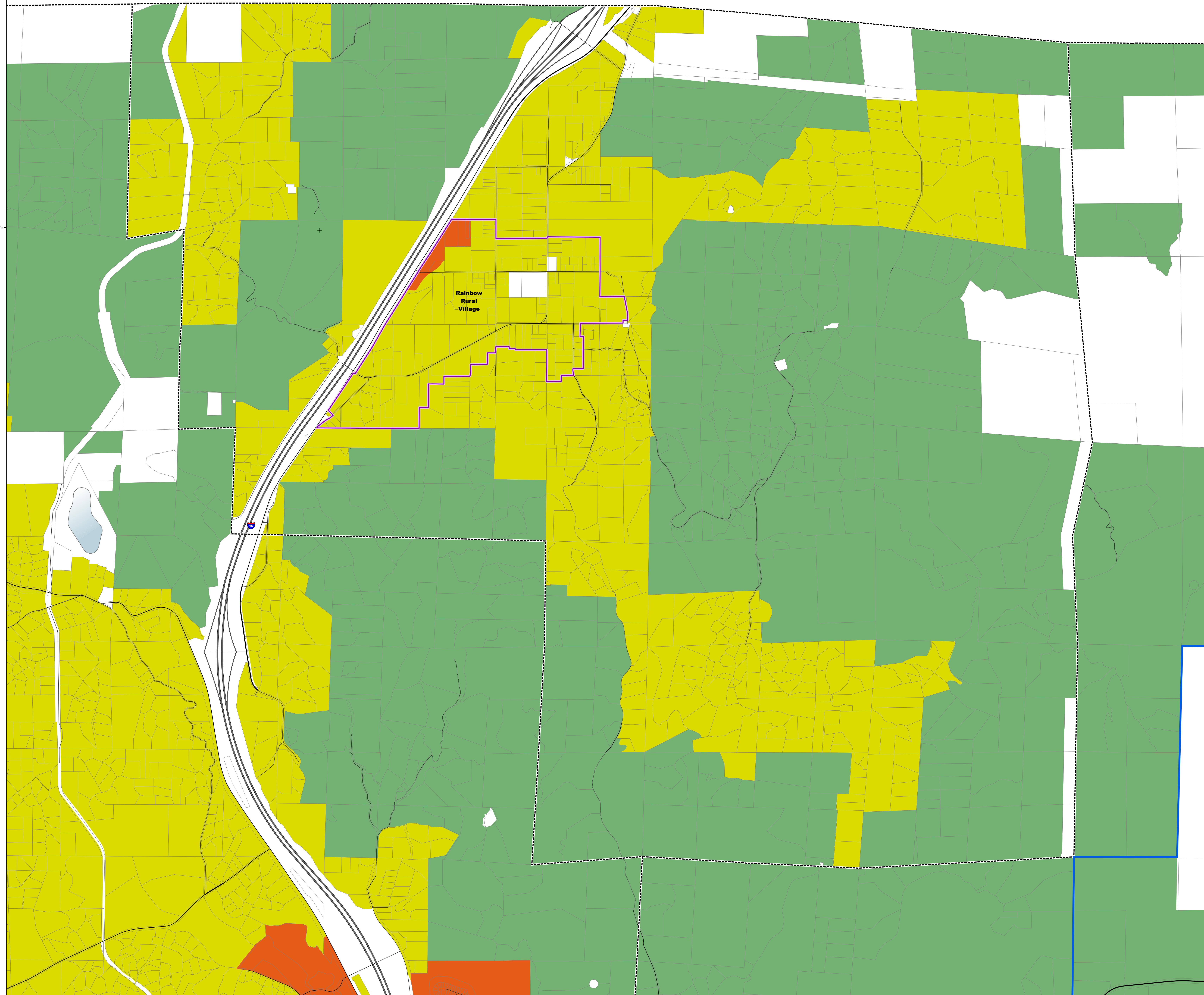




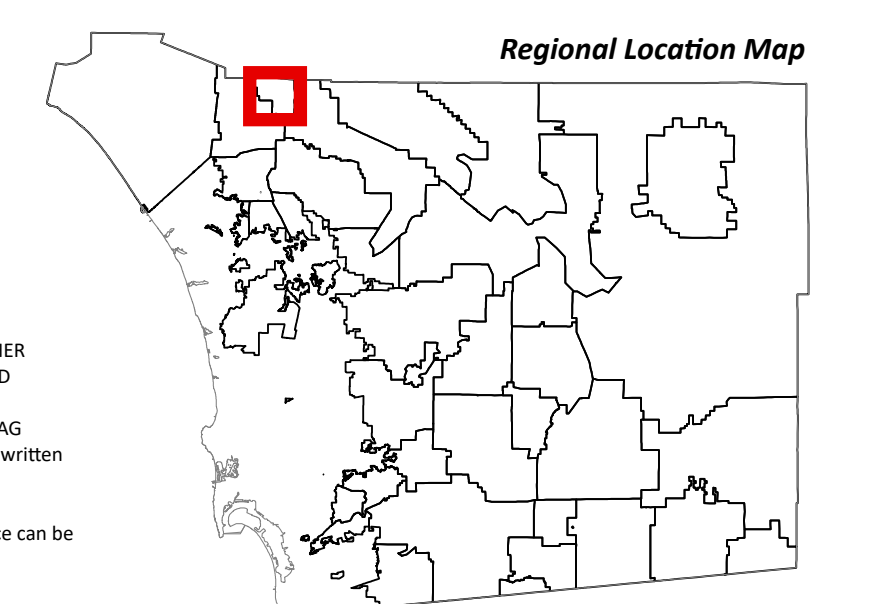
GENERAL PLAN
Rainbow
Community Planning Area

Regional Category Map

- Village
- Rural
- Semi-Rural
- Rural Village Boundary
- Special Study Area
- Village Boundary
- Parcels
- Lakes
- County Water Authority Boundary
- Planning Boundary

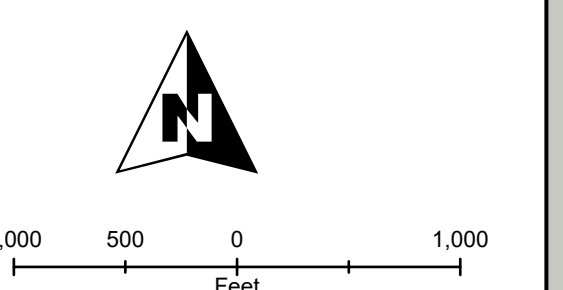
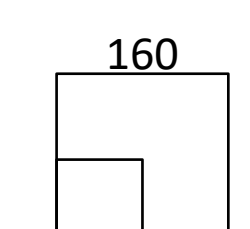


Map Prepared By:
LUeGIS
Geographic Information Services



Coordinates: NAD83 Feet
THIS MAP/DATA IS PROVIDED WITHOUT WARRANTY OF ANY KIND, EITHER EXPRESS OR IMPLIED, INCLUDING BUT NOT LIMITED TO, THE IMPLIED WARRANTIES OF MERCHANTABILITY AND FITNESS FOR A PARTICULAR PURPOSE. Note: This product may contain information from the SANDAG Regional Information System which cannot be reproduced without the written permission of SANDAG.
Copyright SanGIS 2016 - All Rights Reserved. Full text of this legal notice can be found at: http://www.sandag.org/legal_notice.htm

Source: County of San Diego, SanGIS, SANDAG
Document Path: S:\land_use\appupdate_maps\official_map\app\general_plan_cw.aprx



Map Date: 2/26/2016