

MODIFICATION #1
WEST LILAC ROAD - BRIDGE TO HIGHWAY 395

DEPARTMENT OF PUBLIC WORKS

**Request for a
Modification to a Road Standard
and/or to Project Conditions**

Project Number: TM 5571/5572 Date of Request: January 31, 2014

Project Location: Interstate 15 and W. Lilac Road in the County of San Diego, State of California.
127-072-20, 127-072-14 127-072-38, 127-072-41 127-072-40,

Thos. Bros. Map/Grid: 1049, 1069 APN: 127-072-46 127-072-47, 128-280-42 128-440-01, 128-280-46
128-280-27, 128-280-10, 128-440-23, 128-280-37 128-440-05

Requestor Name: Village Communities, Inc Telephone: (858) 345-3644

Address: 11452 El Camino Real, Suite 120, San Diego, CA 92130

Requested Modification (attach engineering sketches showing existing layout, details and notes):

The standard road section for Light Collector Road 2.2C is 40'-54' wide curb to curb
width on 64'-78' ROW. 8' shoulders, and 12' parkways with a minimum design speed of 40 mph.
The requested modification to the road standard is to reduce the shoulder from to 6ft and
reduce the parkway to 2' (north) and 6' (south). Please see Attachment 1 for more information.

Reason for requested Modification (provide attachment if additional space is required):

This portion of West Lilac Road offsite is a transition segment of the road from the
existing bridge over I-15 (with a travel way width of 24') to the intersection with Highway
395 where it will be difficult to construct the required full width (Light Collector 2.2c)
due to offsite grading and habitat disturbance as well as the need for offsite ROW condemnation.
Extensive grading and permission to grade from adjacent land owners on both sides would
be required to implement the standard roadway section (Light Collector 2.2c). West Lilac would
operate at LOS D or better with or without the requested modification.

List alternatives that could mitigate the requested Modification (attach engineering sketches showing proposed layouts, details and notes): No alternative is proposed.

Describe the hardship(s) to the property owner(s) and/or neighbor(s) if the request is not approved (see note 3. on reverse): _____

Aside from the cost of grading and other improvements needed, it would be extremely disruptive to
existing access points along West Lilac Road and be detrimental to community character. obtaining
permission to grade from offsite land owners on both sides of West Lilac Road would be costly, time
consuming, and possibly unobtainable.

Provide Design and Cost Estimate for meeting the Condition (see note 3. on reverse): _____

See Attachment 2 for road design with modification.

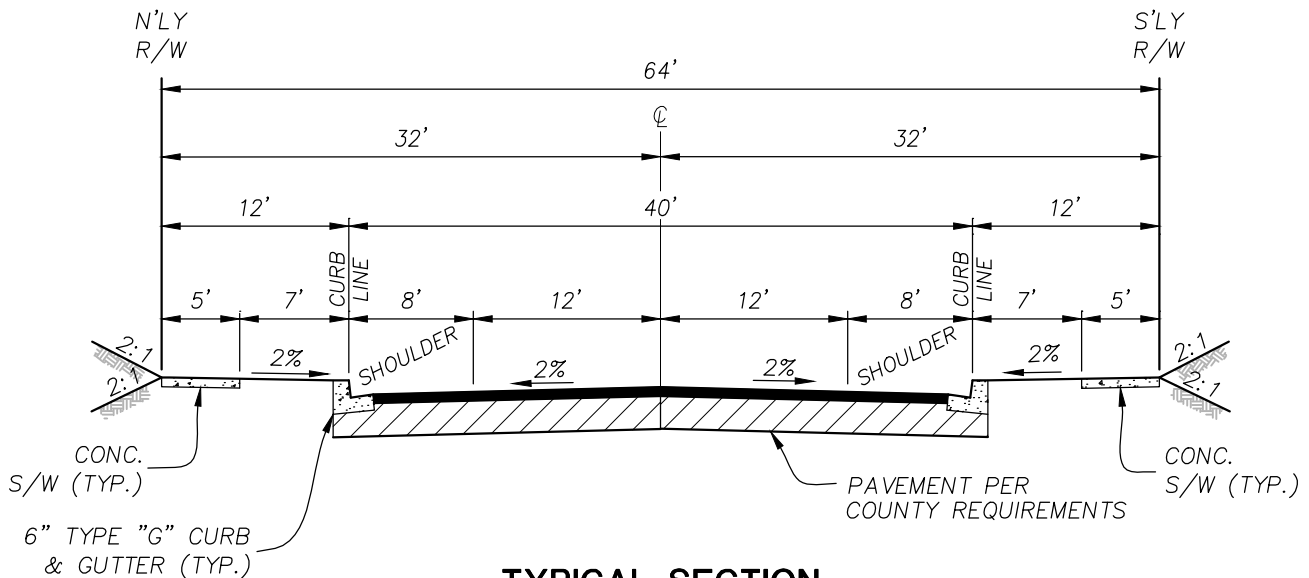
See Attachment 3 for road design without modification.

See reverse for directions and important information.

ATTACHMENT 1

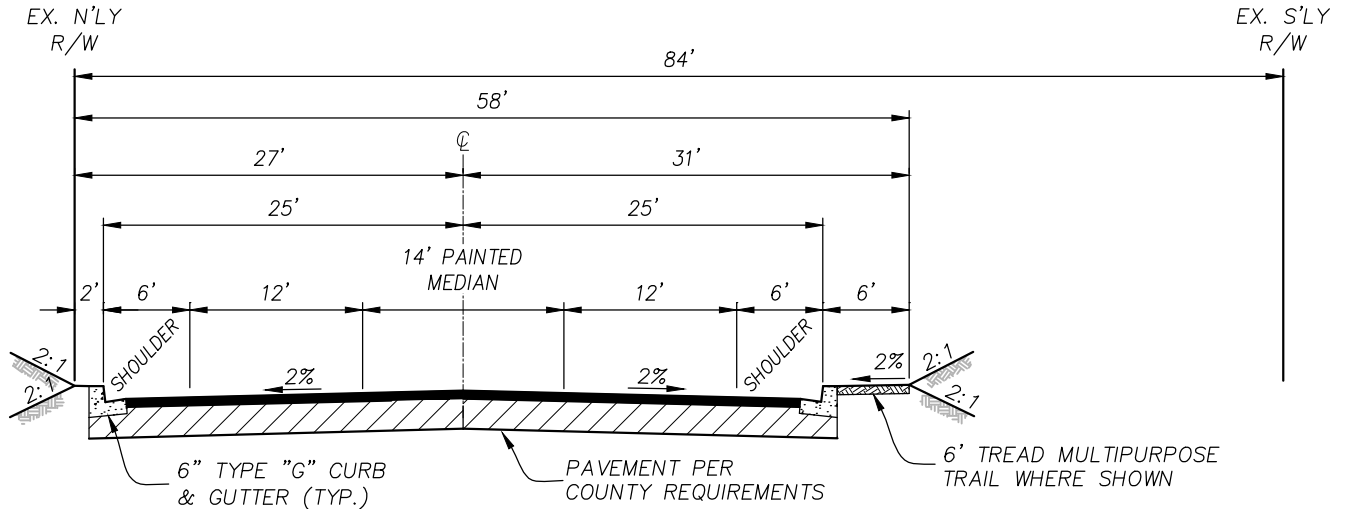
LILAC HILLS RANCH: 2.2C LIGHT COLLECTOR

MODIFICATION TO ROAD STANDARDS



TYPICAL SECTION 2.2C LIGHT COLLECTOR

NO SCALE
(PUBLIC)



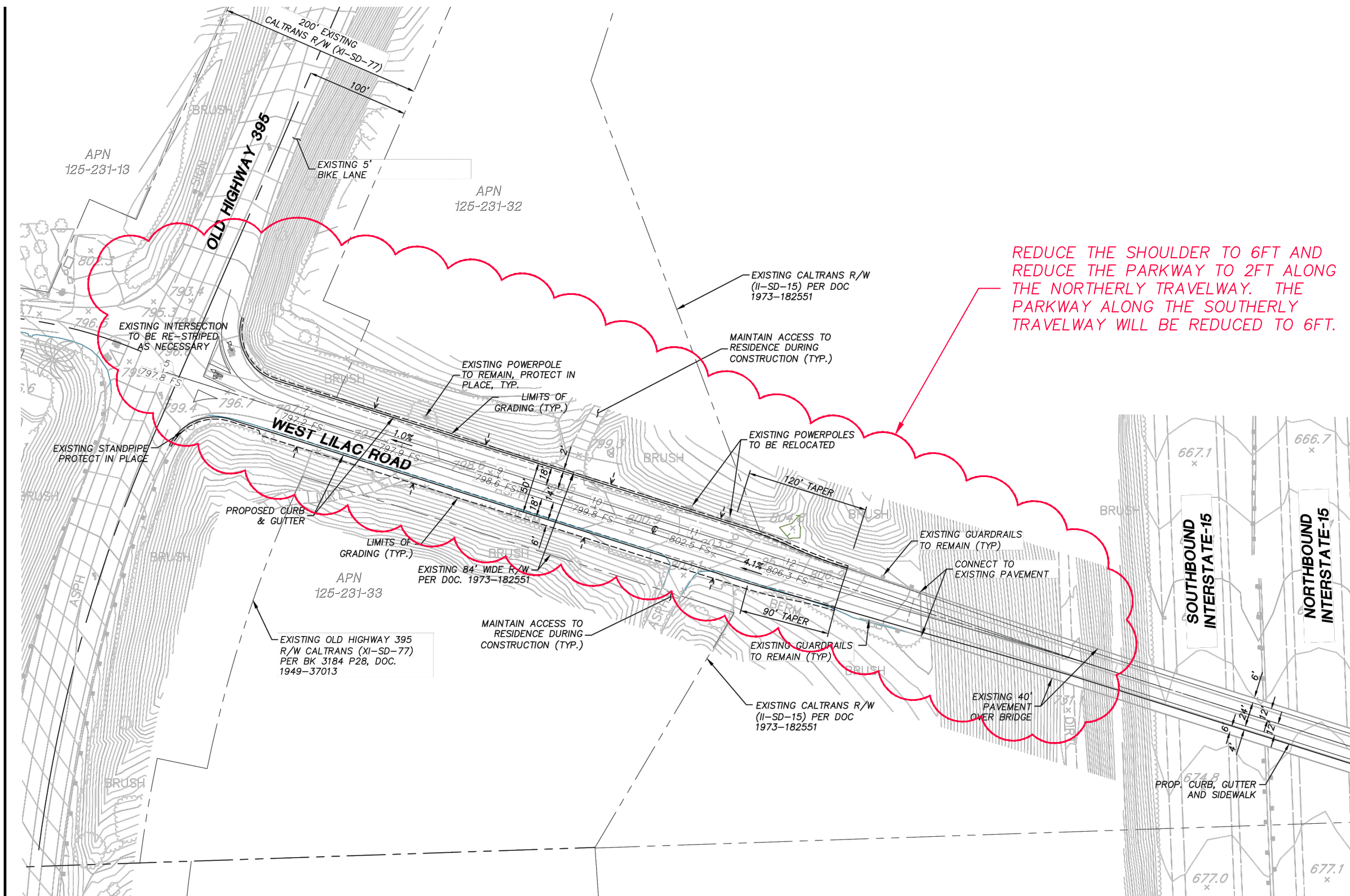
PROPOSED SECTION (2.2C LIGHT COLLECTOR)

WEST LILAC ROAD OFF-STE (I-15 BRIDGE TO OLD HIGHWAY 395)

NO SCALE
(PUBLIC)



*ATTACHMENT 2
WITH MODIFICATION #1
INTERSTATE 15 TO OLD HIGHWAY 395*



NOTE:
SEE MASTER PGP SHEET 4
FOR ADDITIONAL INFORMATION

ATTACHMENT 3

WITHOUT MODIFICATION REQUEST #1

WEST LILAC ROAD - FROM 395 TO I-15 BRIDGE

