



Program at 1-800-638-6620.



MAP SCALE 1" = 1000'

0 500 1,000 1,500 2,000 FEET

NFIP

NATIONAL FLOOD INSURANCE PROGRAM

PANEL 0515G

**FIRM**

**FLOOD INSURANCE RATE MAP  
SAN DIEGO COUNTY,  
CALIFORNIA  
AND INCORPORATED AREAS**

**PANEL 515 OF 2375**

(SEE MAP INDEX FOR FIRM PANEL LAYOUT)

CONTAINS:

COMMUNITY	NUMBER	PANEL	SUFFIX
SAN DIEGO COUNTY	060284	0515	G

Notice to User: The Map Number shown below should be used when placing map orders, the Community Number shown above should be used on insurance applications for the subject community.



**MAP NUMBER  
06073C0515G**

**MAP REVISED  
MAY 16, 2012**

**Federal Emergency Management Agency**

This is an official copy of a portion of the above referenced flood map. It was extracted using F-MIT On-Line. This map does not reflect changes or amendments which may have been made subsequent to the date on the title block. For the latest product information about National Flood Insurance Program flood maps check the FEMA Flood Map Store at [www.msc.fema.gov](http://www.msc.fema.gov)

**APPENDIX C  
HISTORICAL AERIAL PHOTOGRAPHS/TOPOGRAPHIC MAPS**





Historical Aerial Photo

2008

**COVEY LN**

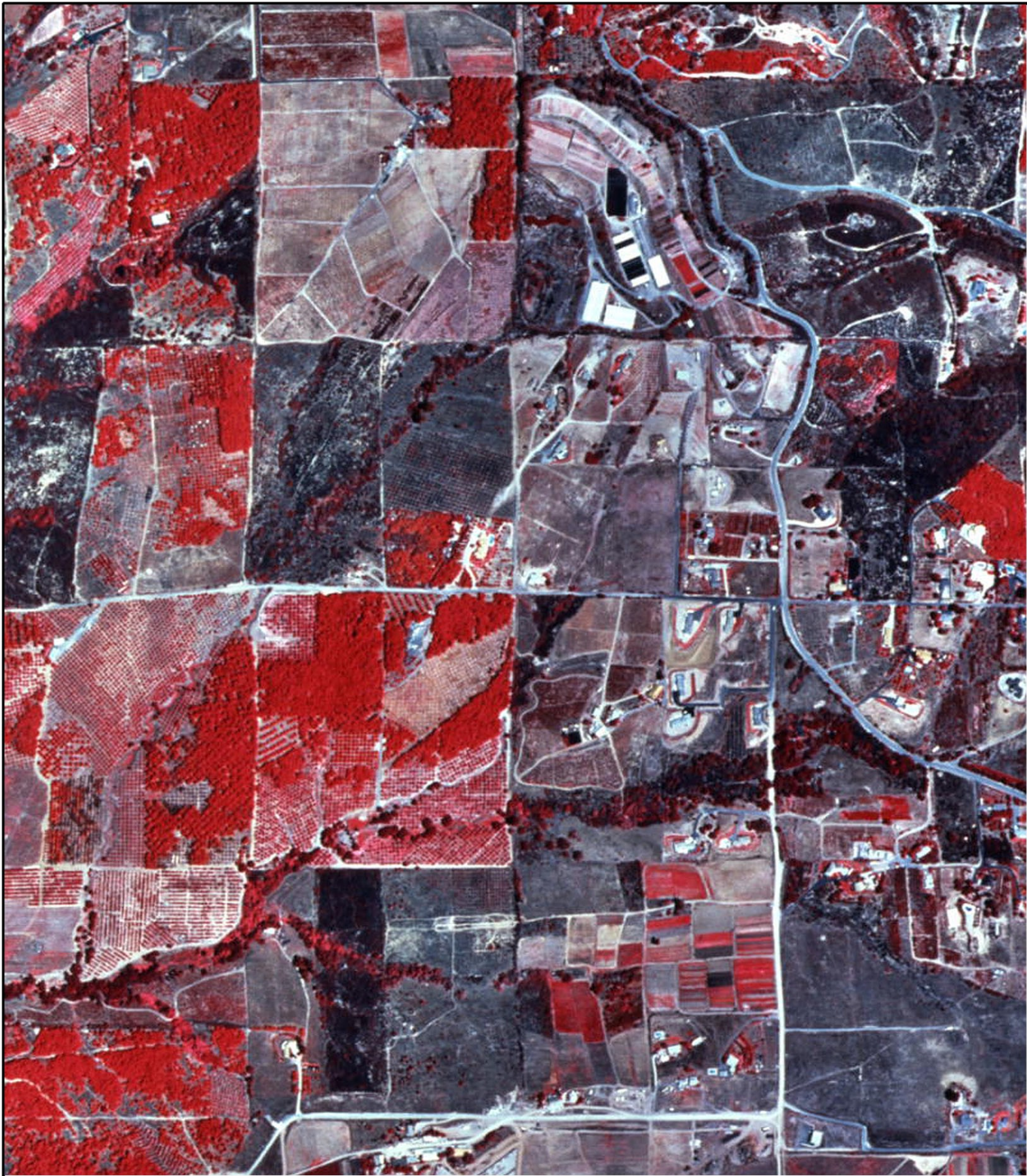
**ESCONDIDO, CA 92026**

Target Site: 33.285931, -117.125580 Job Number: ACR-71507  
(EARTH EXPLORER)



1 inch equals 685 feet





Historical Aerial Photo

2002

**COVEY LN**

**ESCONDIDO, CA 92026**

Target Site: 33.285931, -117.125580 Job Number: ACR-71507  
(NAPP-3C\_12474-180)



1 inch equals 685 feet

**FIRSTSEARCH**





Historical Aerial Photo

1990-1991

**COVEY LN**

**ESCONDIDO, CA 92026**



1 inch equals 685 feet

**FIRSTSEARCH**

Target Site: 33.285931, -117.125580 Job Number: ACR-71507  
(AMI-SD-90-91\_12581)