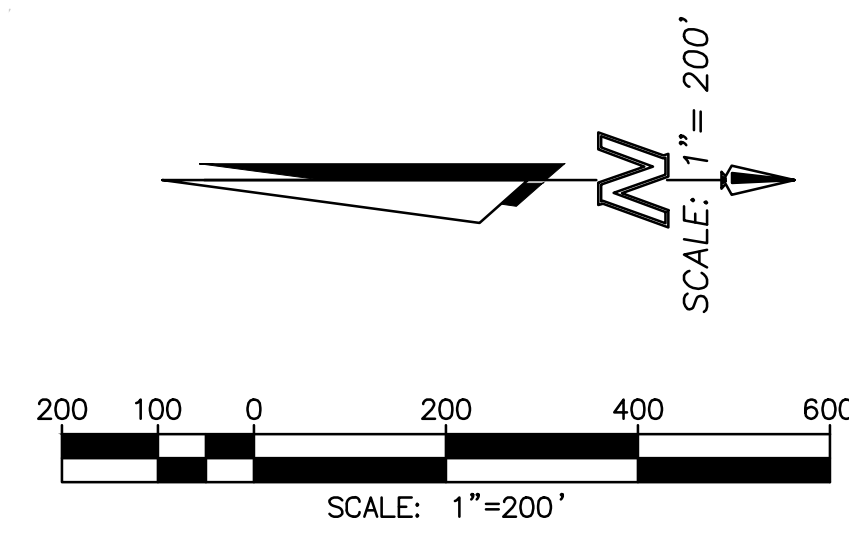



SEE SHEET 5

SEE SHEET 7



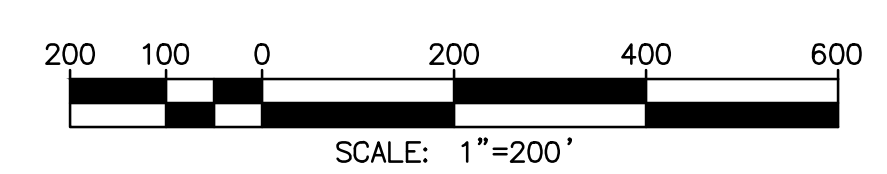
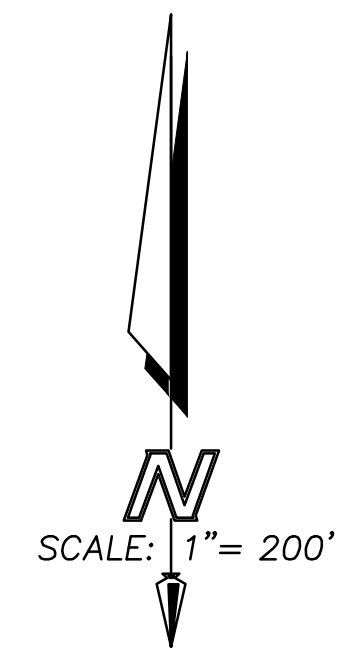
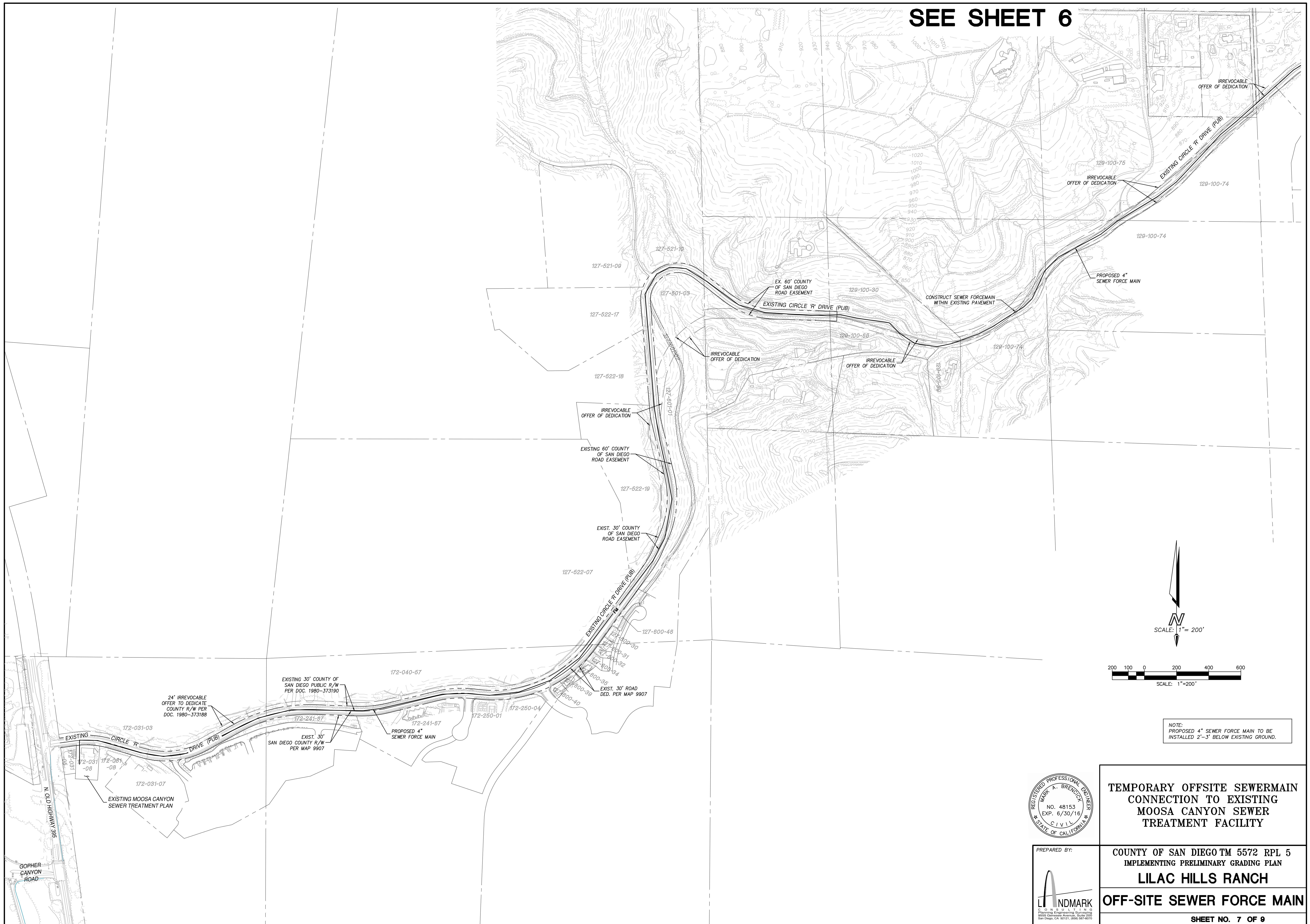
PREPARED BY:

 ND MARK
 CIVIL ENGINEERING & PLANNING
 3005 GARDEN AVENUE, SUITE 200
 SAN DIEGO, CA 92103 (619) 581-0771

TEMPORARY OFFSITE SEWERMAIN CONNECTION TO EXISTING MOOSA CANYON SEWER TREATMENT FACILITY

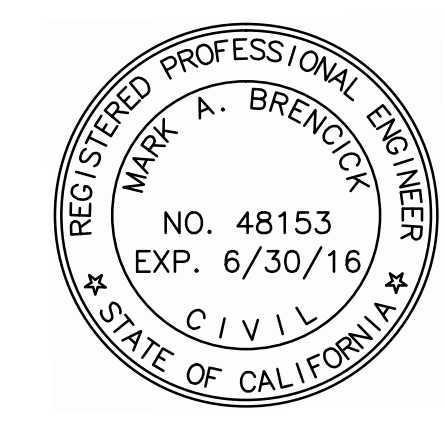
**COUNTY OF SAN DIEGO TM 5572 RPL 5
 IMPLEMENTING PRELIMINARY GRADING PLAN
 LILAC HILLS RANCH
 OFF-SITE SEWER FORCE MAIN**

NOTE:
 PROPOSED 4" SEWER FORCE MAIN TO BE INSTALLED 2'-3" BELOW EXISTING GROUND.

SEE SHEET 6



NOTE:
PROPOSED 4" SEWER FORCE MAIN TO BE
INSTALLED 2'-3' BELOW EXISTING GROUND.



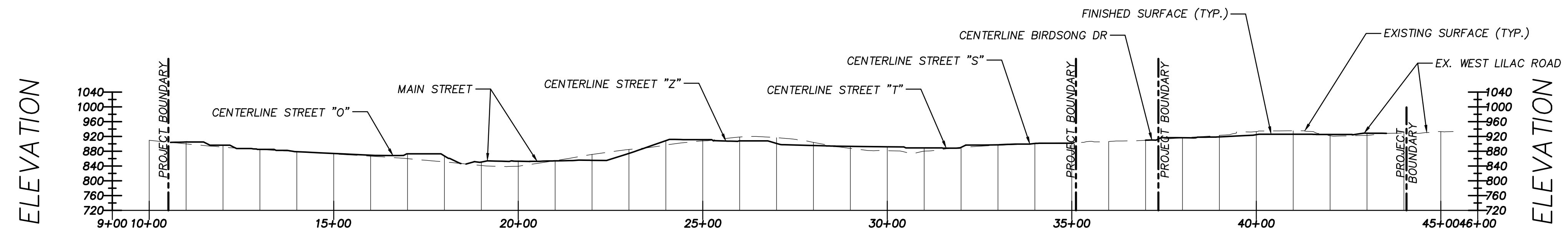
PREPARED BY:
LI NDMARK
CIVIL ENGINEERING & SURVEYING
2005 Garnetwood Avenue, Suite 200
San Diego, CA 92121 (619) 581-0770

TEMPORARY OFFSITE SEWERMAIN CONNECTION TO EXISTING MOOSA CANYON SEWER TREATMENT FACILITY

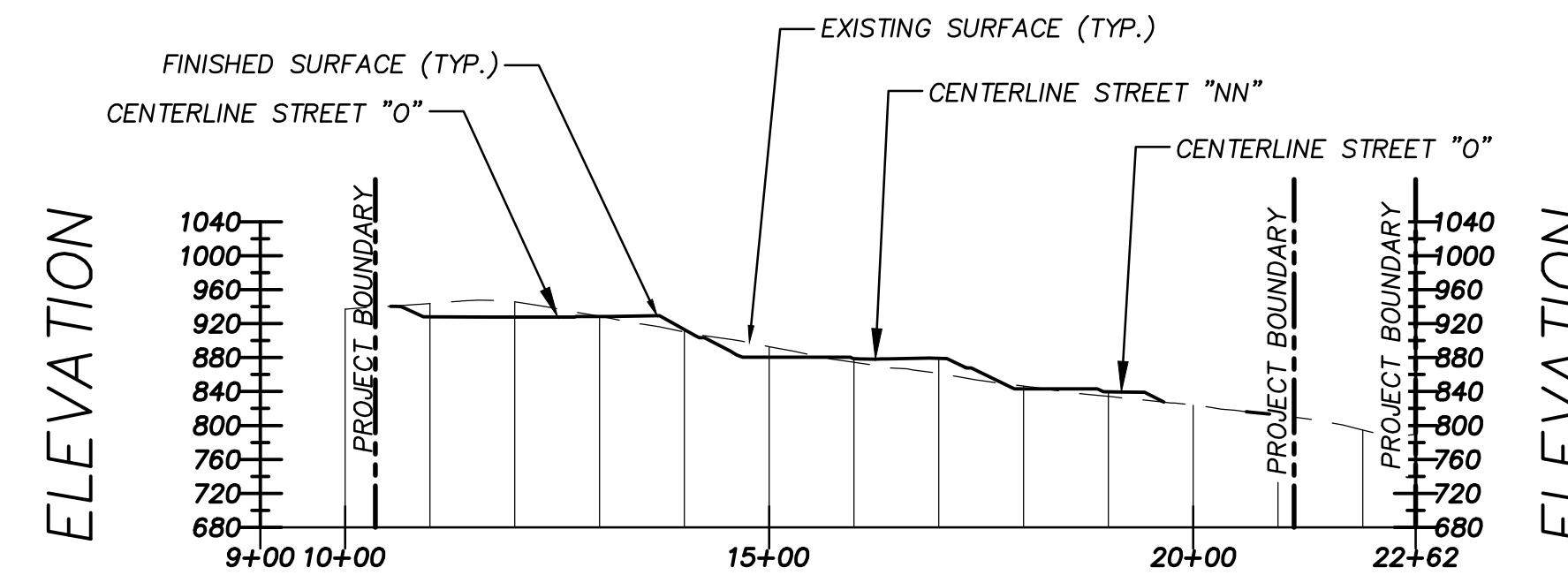
COUNTY OF SAN DIEGO TM 5572 RPL 5
IMPLEMENTING PRELIMINARY GRADING PLAN
LILAC HILLS RANCH
OFF-SITE SEWER FORCE MAIN

SHEET NO. 7 OF 9

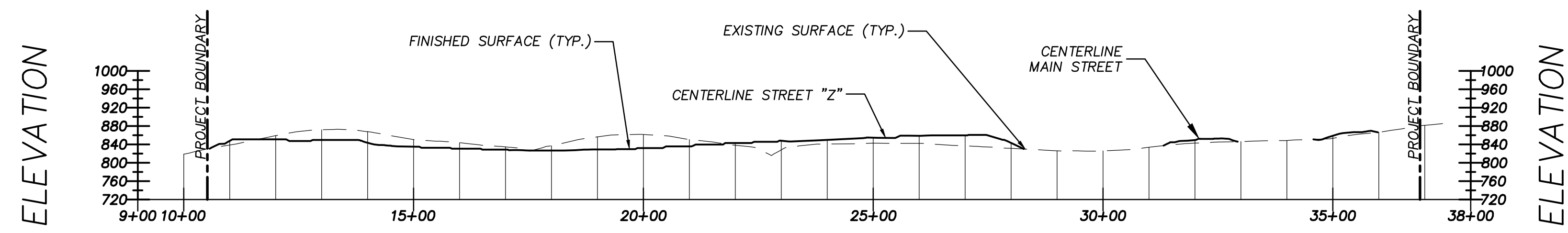
07-01-16 SUBMITTAL



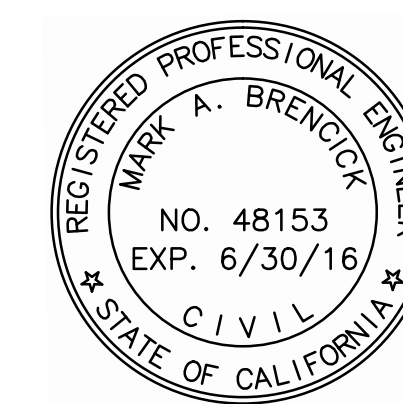
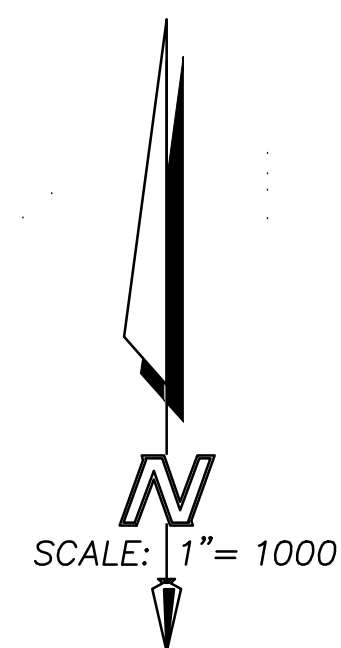
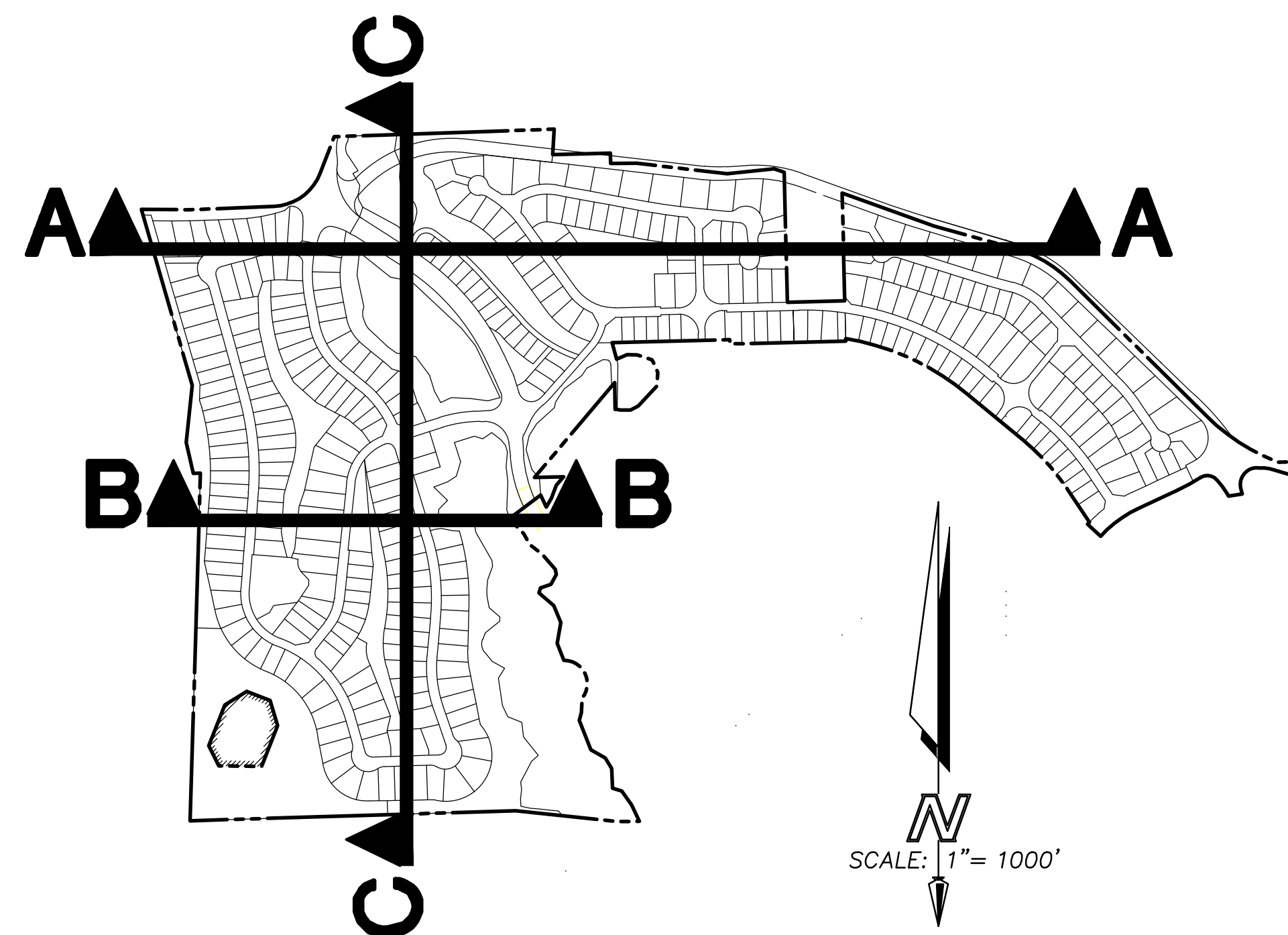
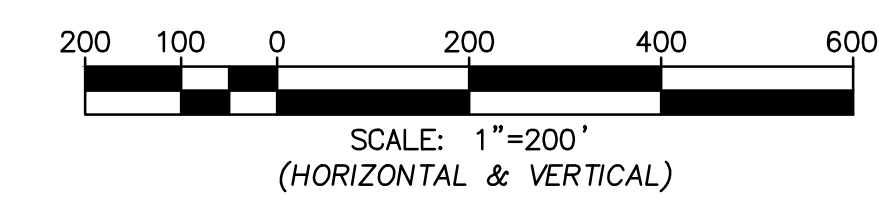
SECTION A-A



SECTION B-B



SECTION C-C



 <small>L I N D M A R K CIVIL ENGINEERING 5055 Garnet Avenue, Suite 200 San Diego, CA 92121 (619) 581-0777</small>	PREPARED BY: COUNTY OF SAN DIEGO TM 5572 RPL 5 IMPLEMENTING PRELIMINARY GRADING PLAN
	LILAC HILLS RANCH PROJECT CROSS SECTIONS
	SHEET NO. 8 OF 9

07-01-16 SUBMITTAL