

Probation Department Diversity Statistics

SEPTEMBER 2018



County Wide Demographics



American Indian or
Alaska Native
(Not Hispanic or Latino)
.5% 2010 Census



Asian / Pacific Islander
(Not Hispanic or Latino)
12.2% 2010 Census



Black or African
American
(Not Hispanic or Latino)
4.6% 2010 Census

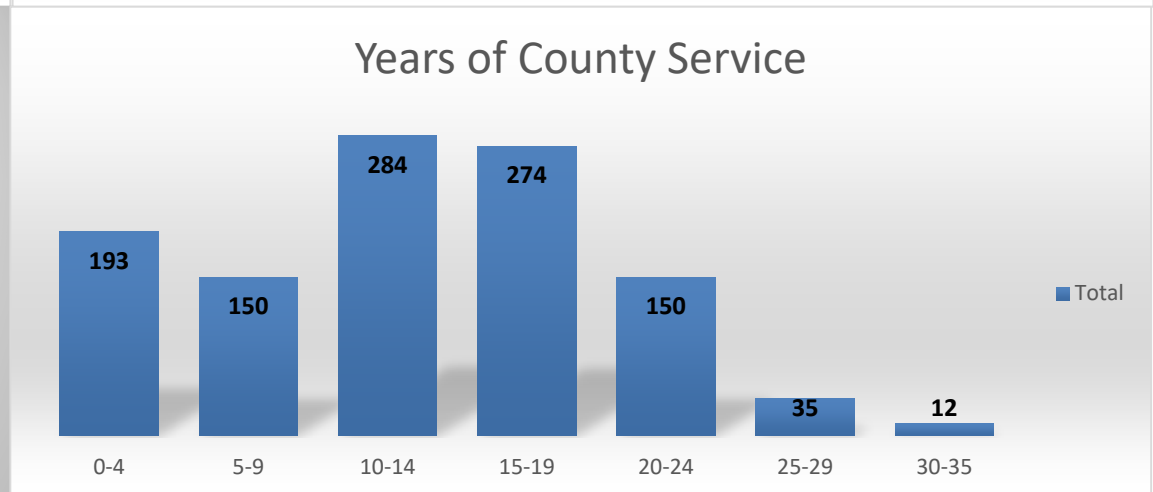
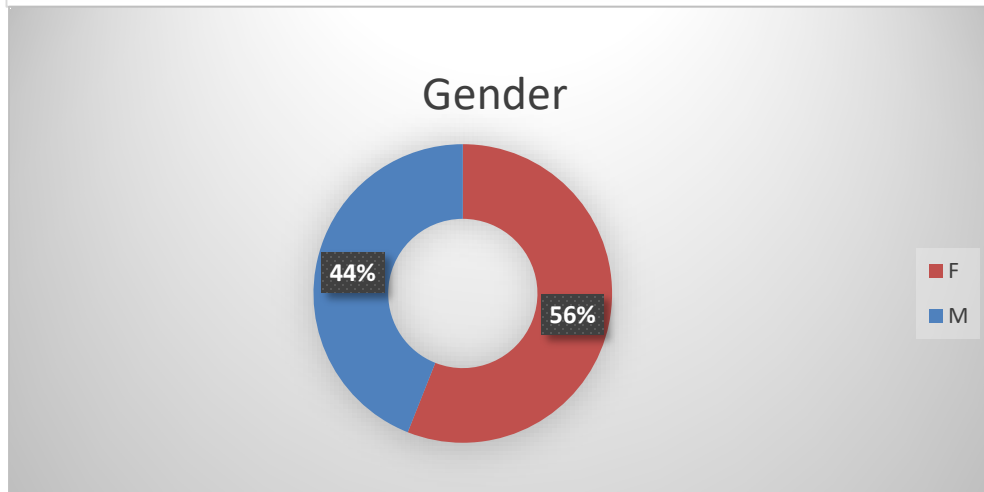
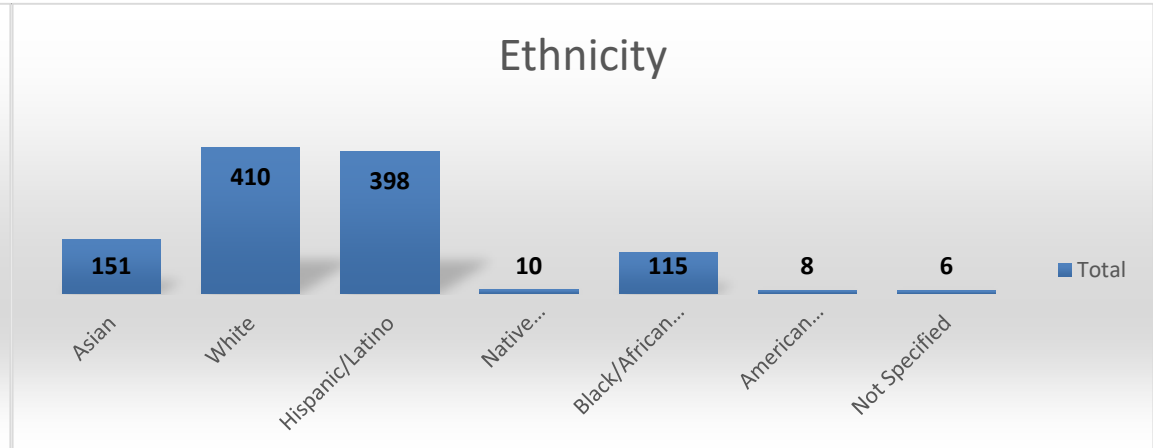
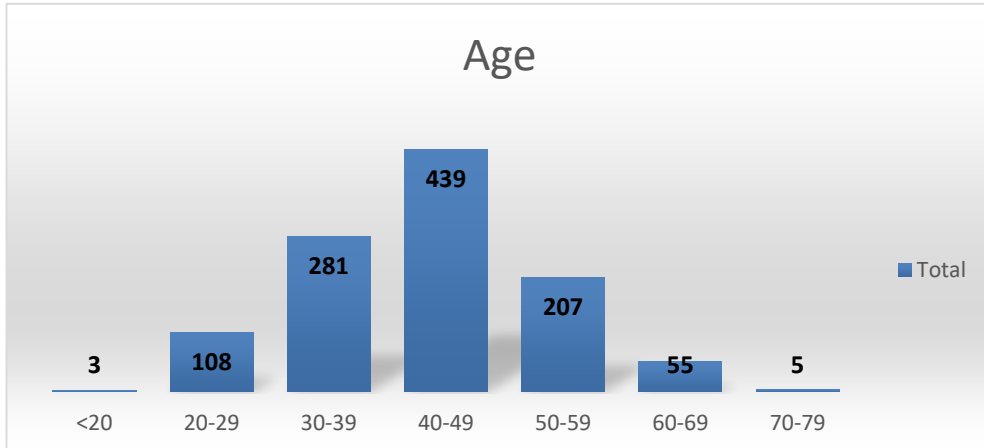


Hispanic or Latino
28.3% 2010 Census



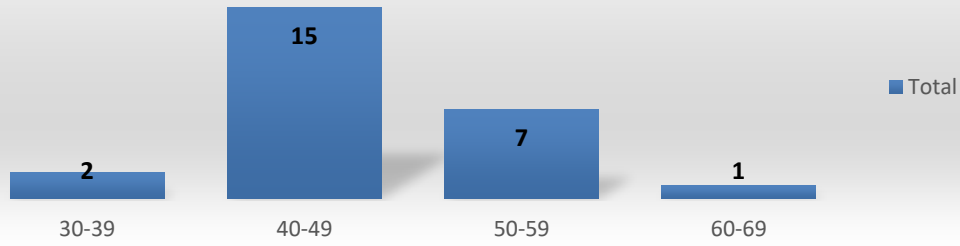
White
(Not Hispanic or Latino)
54.5% 2010 Census

Probation Department Employees -1,098

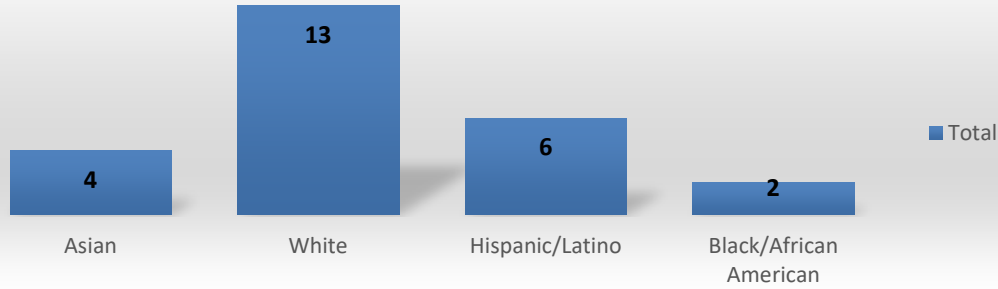


Executive Management -25

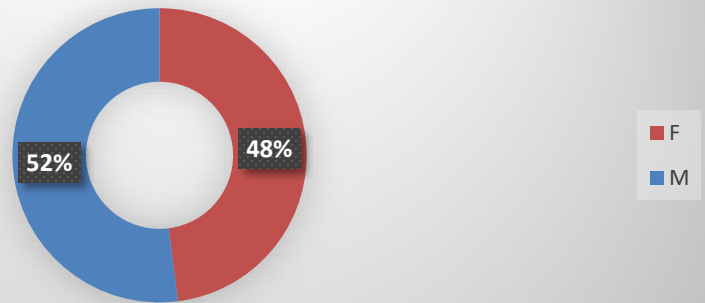
Age



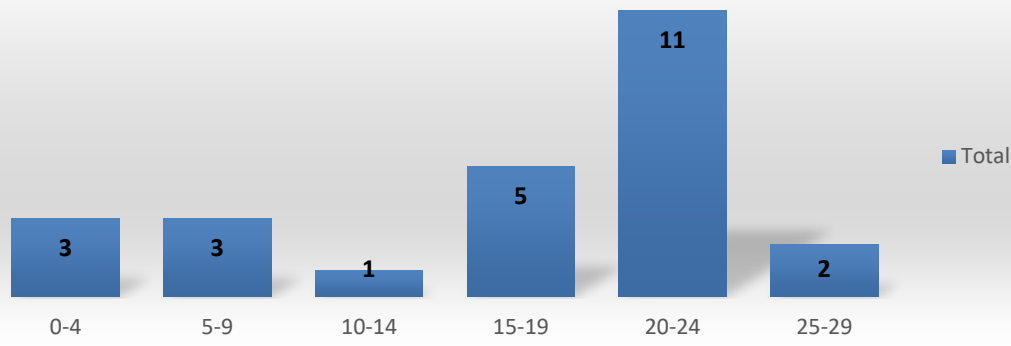
Ethnicity



Gender

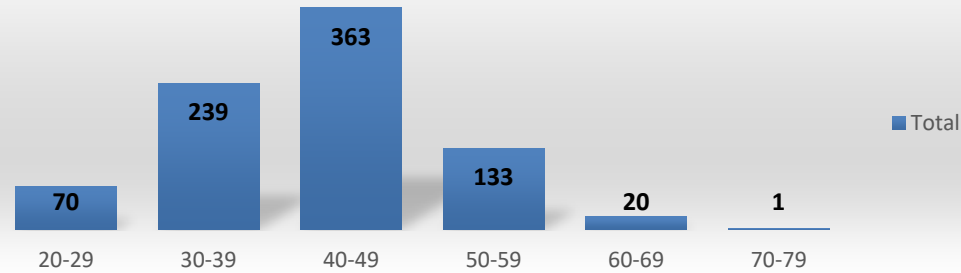


Years of County Service

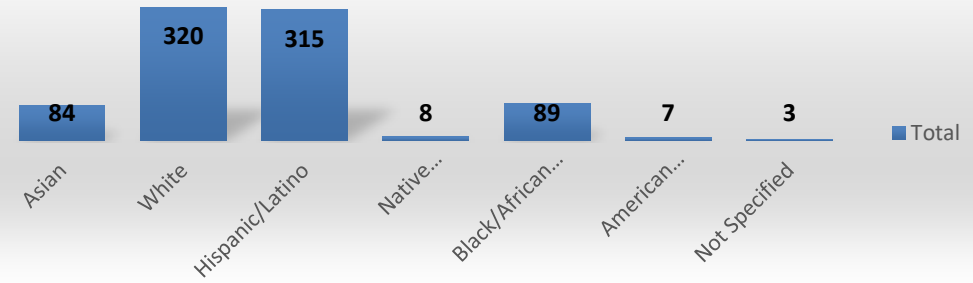


Sworn Staff -826

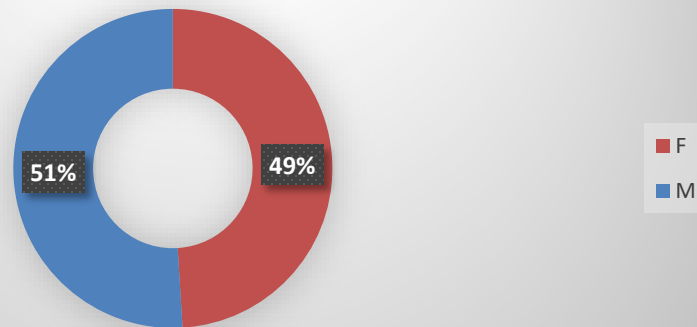
Age



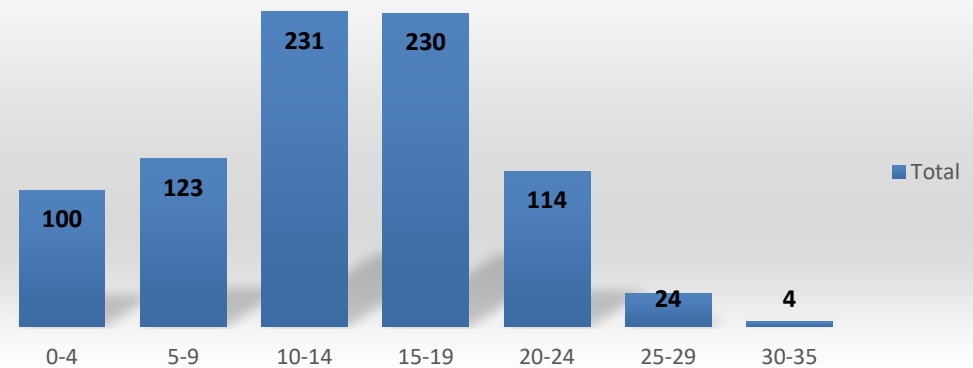
Ethnicity



Gender

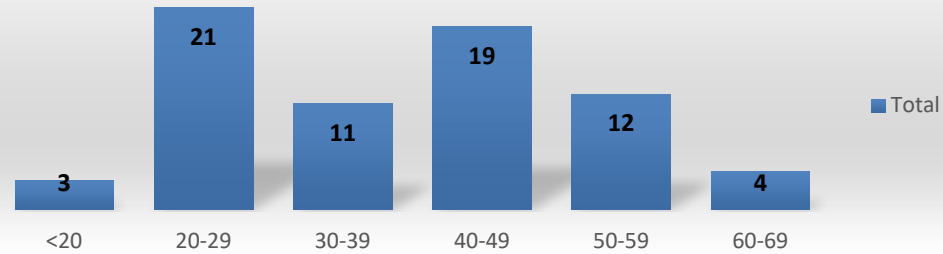


Years of County Service

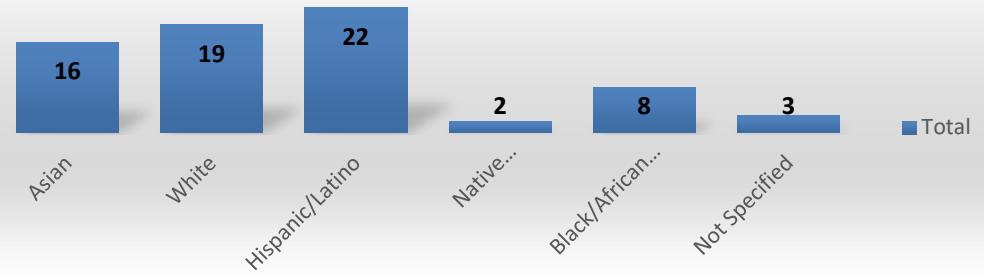


Professional Staff -70

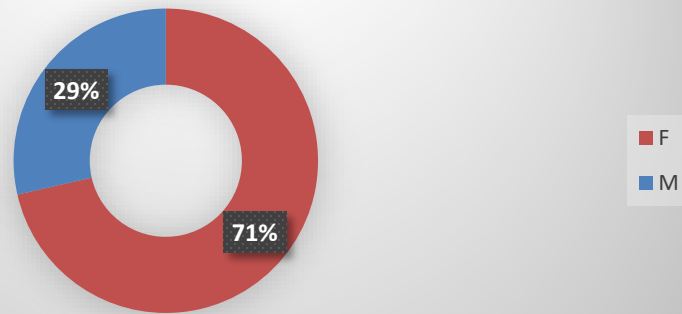
Age



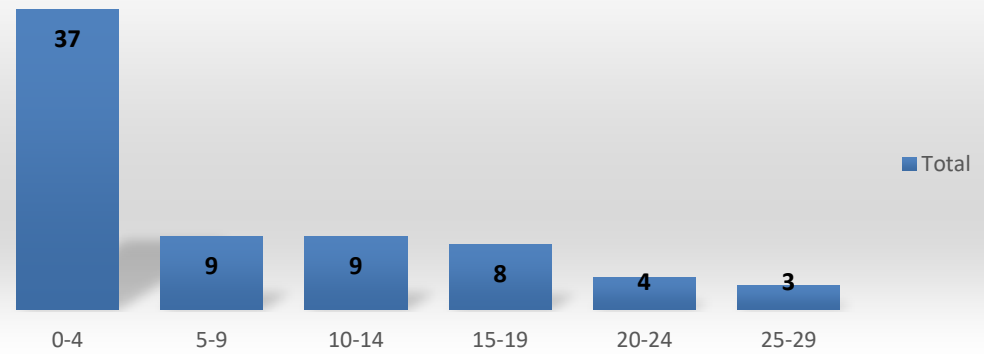
Ethnicity



Gender

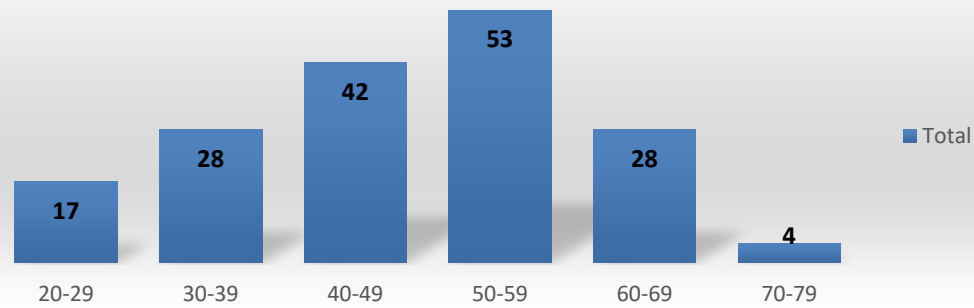


Years of County Service

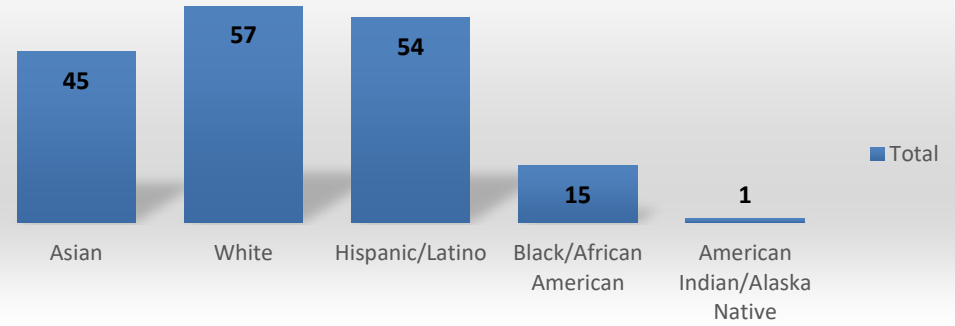


Administrative Staff -172

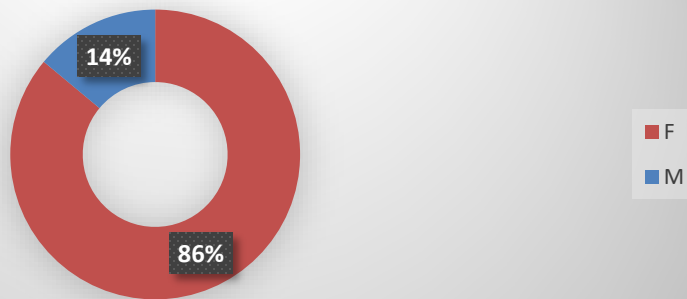
Age



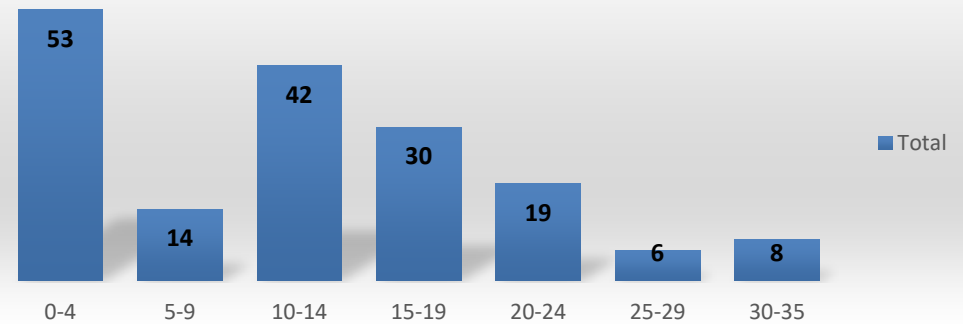
Ethnicity



Gender

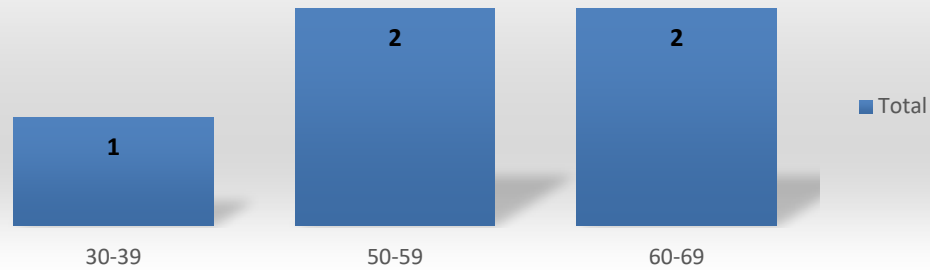


Years of County Service

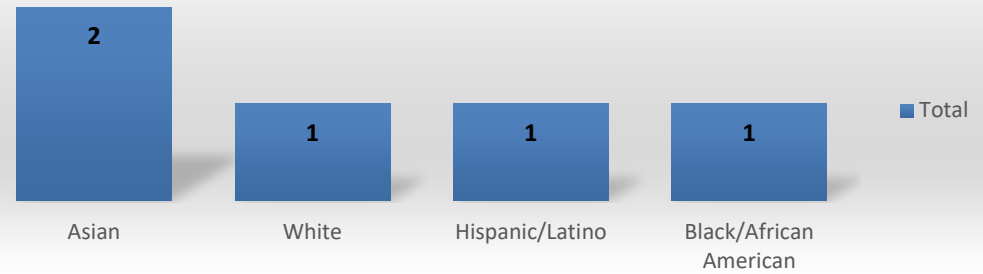


Service-Maintenance Staff -5

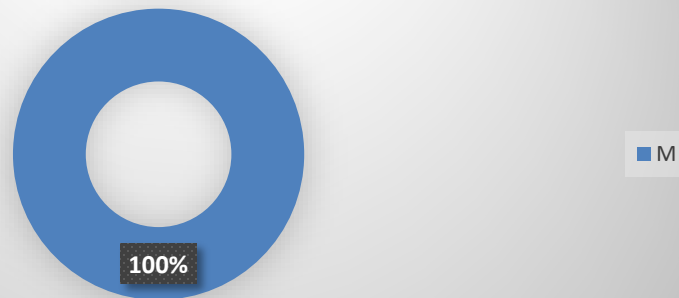
Age



Ethnicity



Gender



Years of County Service

