



COUNTY OF SAN DIEGO

INDEPENDENT
REDISTRICTING
COMMISSION



LIVE WELL
SAN DIEGO

A large bridge with multiple concrete pillars spans a body of water at dusk. The bridge's lights are on, and their reflection is visible in the water. The sky is a deep blue, and the water is dark with bright orange and yellow reflections from the bridge lights. A large white circle is overlaid on the left side of the image, containing the agenda text.

AGENDA

- Welcome & Introduction
- Redistricting Overview
- Communities of Interest
- Draft Maps
- Mapping Directives
- How to Participate
- Q&A



Redistricting in San Diego County

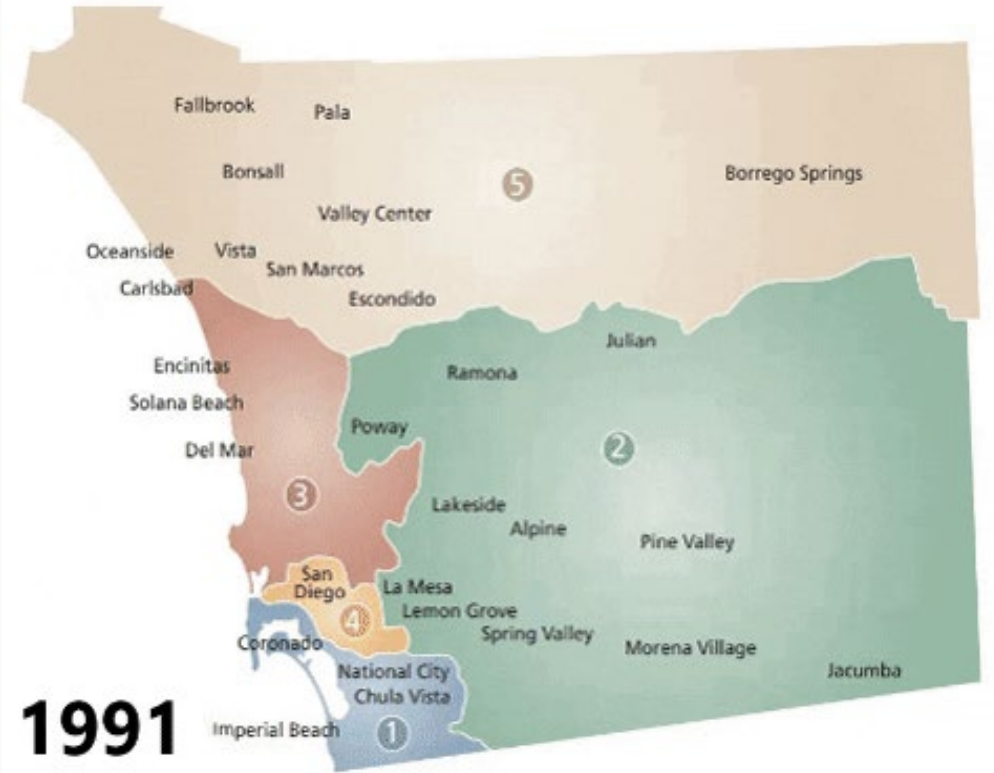
The process of **redrawing district boundaries** for each of the five supervisorial districts so that each district has **reasonably equal populations**.

Criteria* Used to Redraw District Boundaries

1. Have reasonably equal population
2. Comply with Voting Rights Act
3. Be contiguous
4. Minimize division of cities, neighborhoods, and communities of interest
5. Be geographically compact

May NOT:

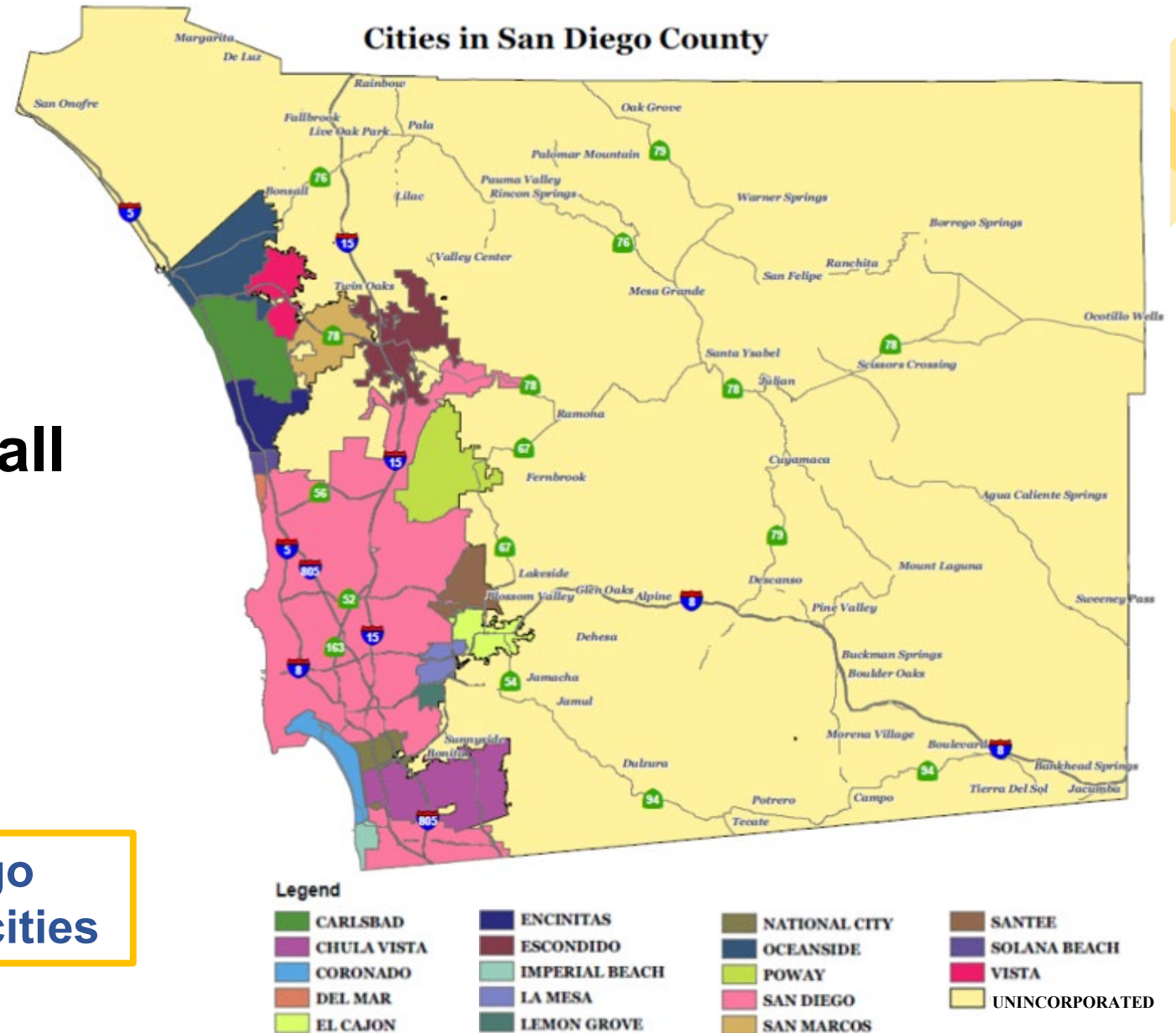
- Consider place of residence of any incumbent or political candidate
- Favor or discriminate against an incumbent, political candidate, or political party



Criteria* Specific to San Diego County

- At least three districts shall include unincorporated territory
- Two must be primarily unincorporated areas

The County of San Diego includes 18 incorporated cities



*San Diego County Charter, Article IV, Section 400.1



2021-2022 ADOPTED FISCAL YEAR BUDGET

COUNTY OF SAN DIEGO

\$7.23 BILLION



Why does Redistricting Matter?

- Public Health (COVID-19 response)
- Social Services
- Election Services
- Voter Registration
- Roads
- Parks
- Water
- Libraries
- Law Enforcement/Jails



How will the County of San Diego Redistricting Commission gather information to redraw boundaries?



**2020
Census
data**



**Public input to help
us learn about and
understand
communities of
interest**



What are Communities of Interest (COI)?

- A contiguous population that shares common social or economic interests that should be included within a single district for purposes of effective and fair representation.
- COI do not include relationships with political parties, incumbents, or political candidates.

**YOUR
VOICE
MATTERS**

THE MOST IMPORTANT
SOURCE OF
INFORMATION IS FROM
YOU!

THE PUBLIC



Ways to Provide Public Input on COI

One person one vote – every person's vote counts equally!



- **Provide oral testimony at public hearings**
- Submit written testimony at any time - email, regular mail, submitting eComments via IRC website
- Draw your community - electronic tool at website or paper map
- Provide as much detail as you can about your community and the characteristics or issues that bind you together and why you should be united in a single district!

Adjusted Census Data

2010

County Total Population	Ideal District Population	Overall Range	District	District Population	Percent Deviation	Number Over / Under Ideal District Population
3,095,313	619,063	2.7%	1	609,527	-1.5%	-9,536
			2	620,881	0.3%	1,818
			3	617,935	-0.2%	-1,128
			4	626,452	1.2%	7,389
			5	620,518	0.2%	1,455

2020

County Population Enumeration	Ideal District Population	Overall Range	District	Population Enumeration per District	Percent Deviation	Magnitude Over / Under Ideal District Population
3,302,262	660,452	5.0%	1	639,389	-3.2%	-21,063
			2	664,303	0.6%	3,851
			3	672,094	1.8%	11,642
			4	658,143	-0.3%	-2,309
			5	668,333	1.2%	7,881

Adjusted Census Data

2010 to 2020 Total Population Change

County Population Change	Percent County Population Change	District	Population Change per District	Percent Population Change per District
206,949	6.7%	1	29,862	4.9%
		2	43,422	7.0%
		3	54,159	8.8%
		4	31,691	5.1%
		5	47,815	7.7%



County of San Diego Redistricting Process

Hold Public Meetings

**Conduct Pre-mapping Public
Hearings**

Gather Public Testimony

Draw Draft Maps



Conduct Draft Map Public Hearings

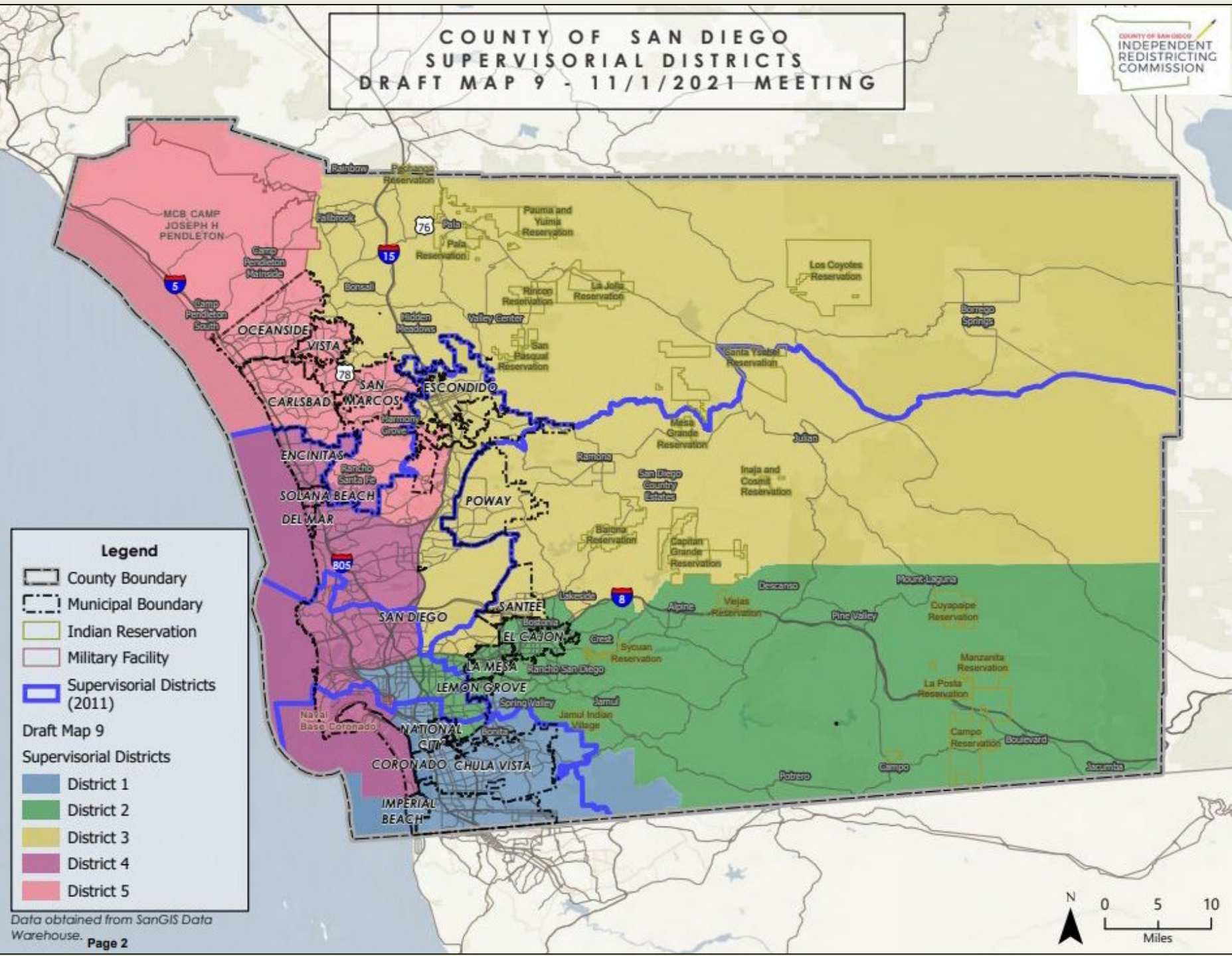
Adopt Final Map

Draft Maps Based on Motions During
IRC Draft Map Public Hearing on Nov 1

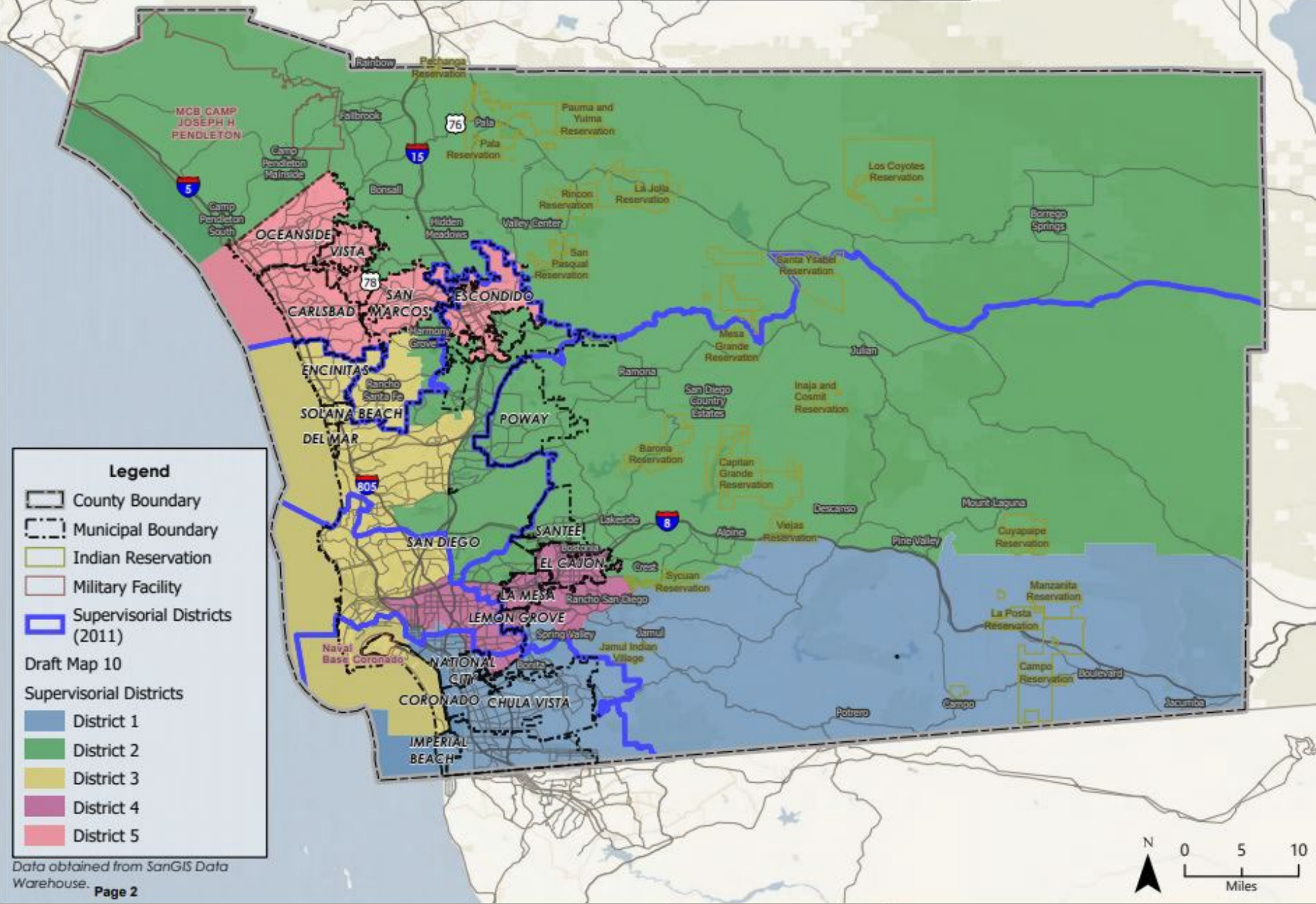
COUNTY OF SAN DIEGO SUPERVISORIAL DISTRICTS DRAFT MAP 9 - 11/1/2021 MEETING

COUNTY OF SAN DIEGO
INDEPENDENT
REDISTRICTING
COMMISSION

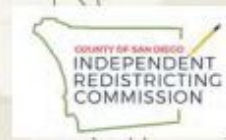
9



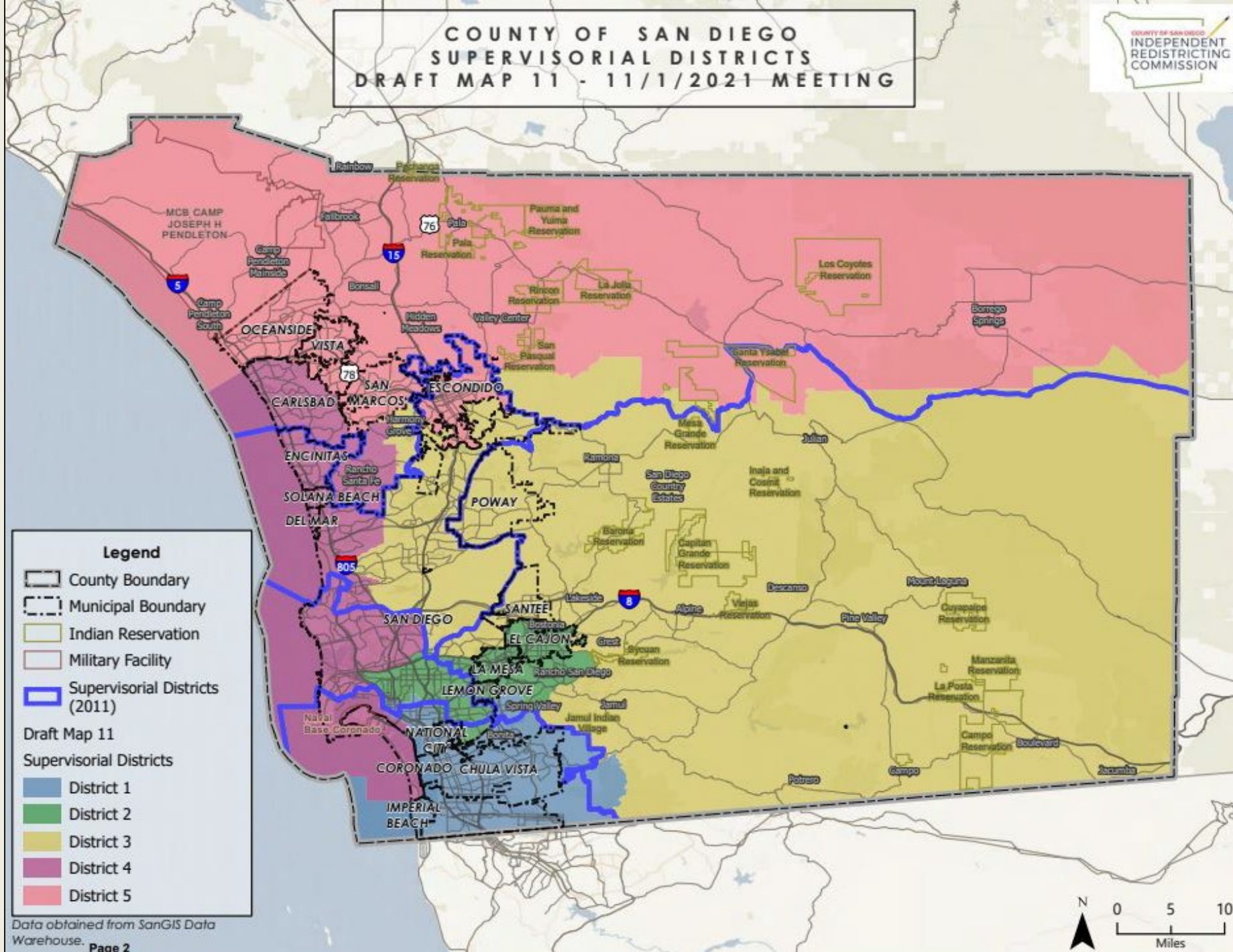
COUNTY OF SAN DIEGO SUPERVISORIAL DISTRICTS DRAFT MAP 10 - 11/1/2021 MEETING



COUNTY OF SAN DIEGO SUPERVISORIAL DISTRICTS DRAFT MAP 11 - 11/1/2021 MEETING



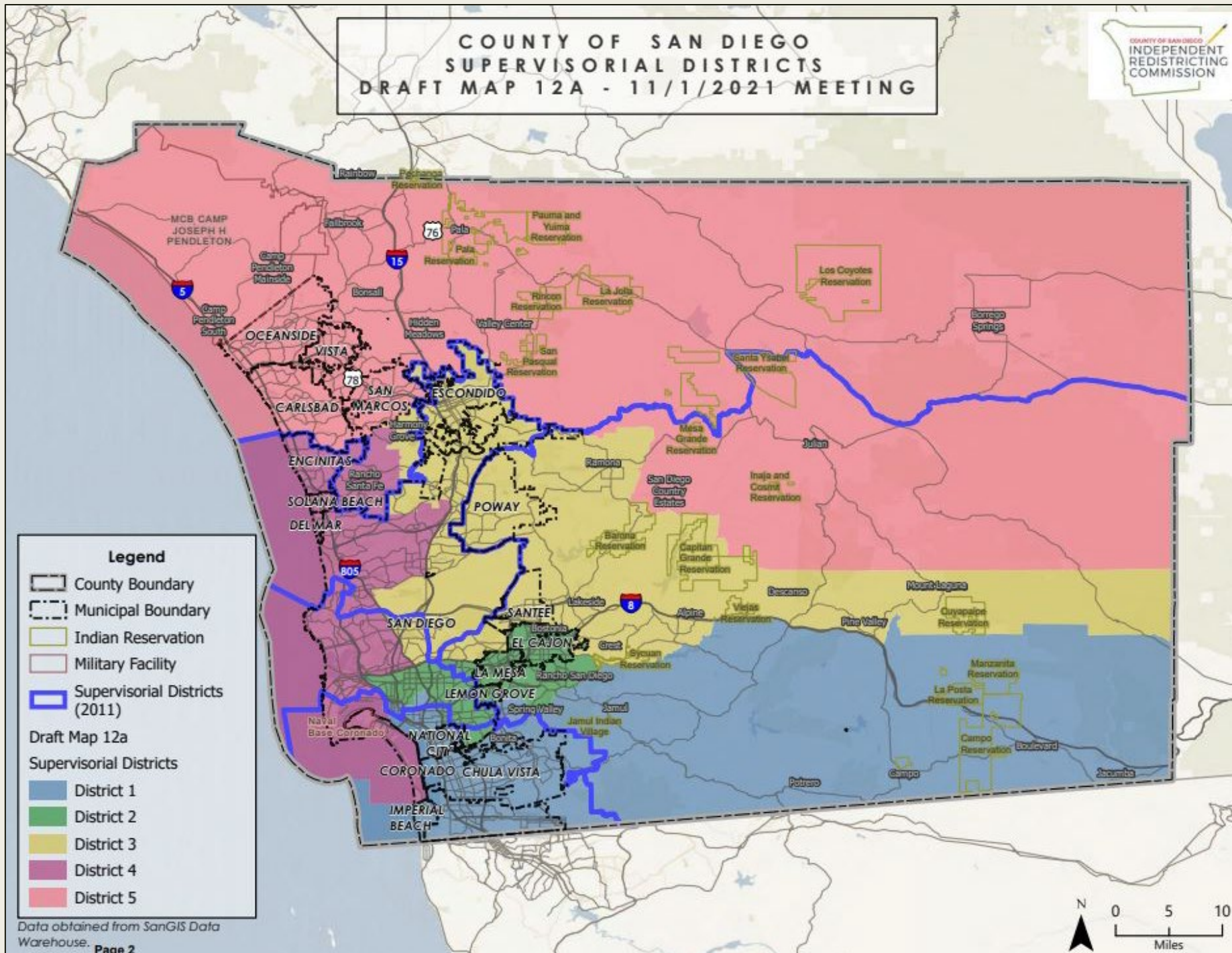
11



COUNTY OF SAN DIEGO SUPERVISORIAL DISTRICTS DRAFT MAP 12A - 11/1/2021 MEETING

COUNTY OF SAN DIEGO
INDEPENDENT
REDISTRICTING
COMMISSION

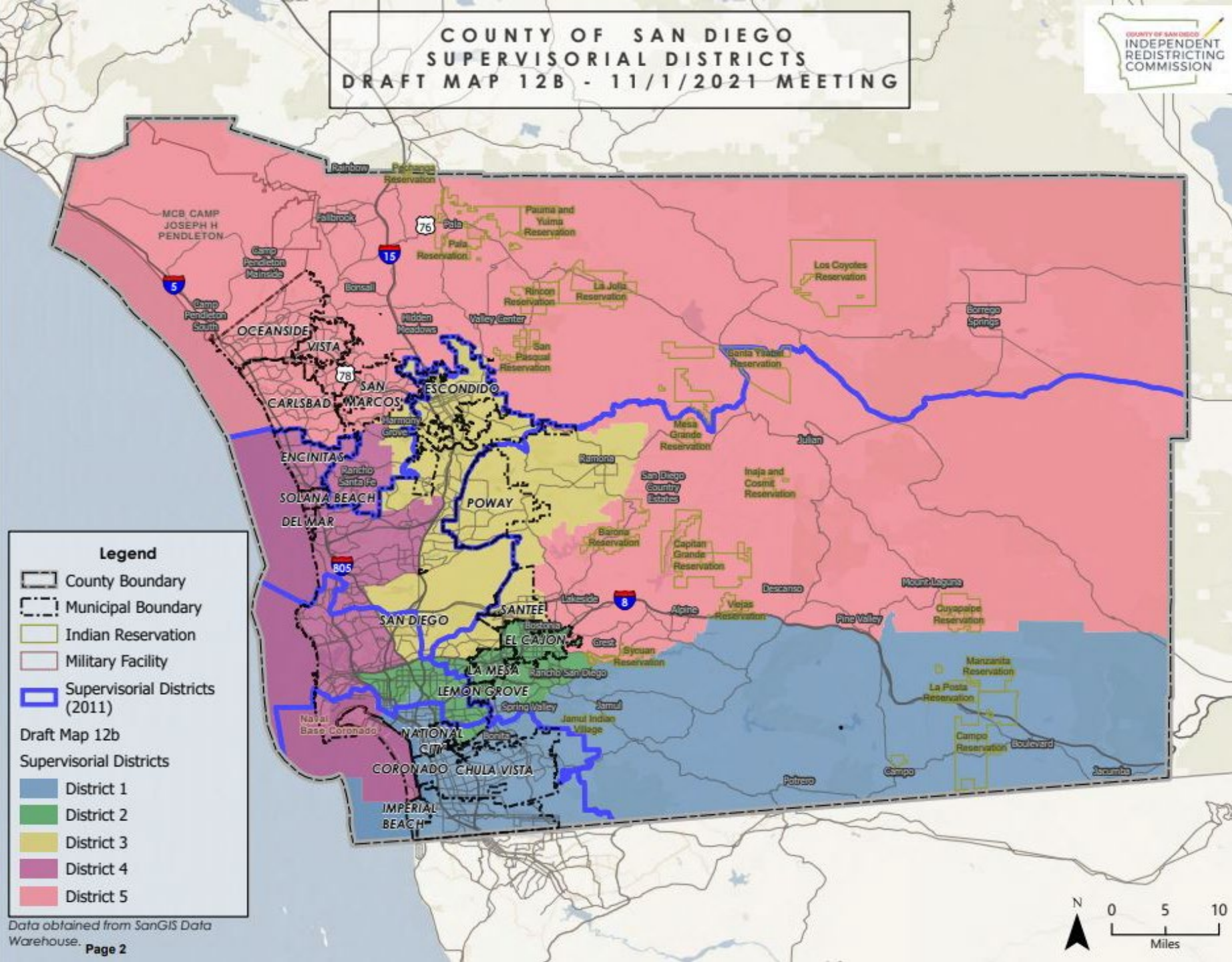
12A



COUNTY OF SAN DIEGO SUPERVISORIAL DISTRICTS DRAFT MAP 12B - 11/1/2021 MEETING

COUNTY OF SAN DIEGO
INDEPENDENT
REDISTRICTING
COMMISSION

12B



HOW DO I PARTICIPATE?

ATTEND AN UPCOMING INDEPENDENT REDISTRICTING COMMISSION MEETING!

- County residents are invited to provide input by joining the IRC Meetings online or in-person (virtual participation will be available for all meetings)
- For meeting locations and Zoom details, visit www.drawyourcommunity.com



How to Provide Feedback on Draft Maps

KEEP IT SIMPLE

- ▶ Send an email to **redistricting@sdcounty.ca.gov**
- ▶ Call us at **619-409-3003**
- ▶ Submit an e-comment at **www.drawyourcommunity.com**
- ▶ Mail a letter to: **County of San Diego IRC**
1600 Pacific Highway, Room 402
San Diego, CA 92101

FEELING INSPIRED?

- ▶ Draw your community of interest using the Community Builder Tool at **www.drawyourcommunity.com**
(Provide as much detail as you can about your community and the characteristics or issues that bind you together and why you should be united in a single district)
- ▶ Draw your map using the District Scenario Modeler at **www.drawyourcommunity.com**
- ▶ Download a map, draw lines directly on the map and email to **redistricting@sdcounty.ca.gov**

UPCOMING IRC MEETINGS AND DRAFT MAP PUBLIC HEARINGS

Date	Time	Meeting & Location	Content
Monday, November 1	5:00 pm	<u>Draft Map Public Hearing & IRC Rescheduled Regular Meeting</u> City of Chula Vista City Hall (Council Chambers) 276 Fourth Ave., Bldg. A, Chula Vista, CA 91910	First revised set of draft maps presented
Saturday, November 13	11:00am	<u>IRC Regular Meeting</u> Virtual	Second revised set of draft maps presented
Thursday, December 2	5:00 pm	<u>Draft Map Public Hearing & IRC Special Meeting</u> Location: San Diego County Board of Ed. 6401 Linda Vista Rd Rms 401-402, San Diego CA 92111	Third revised set of draft maps presented
Thursday, December 9	5:30 pm	<u>IRC Regular Meeting</u> County Administration Center 1600 Pacific Highway, Room 302, San Diego, CA 92101	Final draft map presented; IRC adopts Final Map.
Tuesday, December 14	2:00 pm	<u>IRC Special Meeting</u> County Operations Center 5520 Overland Ave, Training Room 120, San Diego, CA 92123	IRC approval of Final Report

Ways to Participate and Stay in Touch!

WEBSITE: drawyourcommunity.com

EMAIL: redistricting@sdcounty.ca.gov

PHONE: 619-409-3003

ADDRESS: County of San Diego IRC
1600 Pacific Highway, Room 402
San Diego, CA 92101

COMMUNITY BUILDER:
drawyourcommunity.com

QR CODE:

