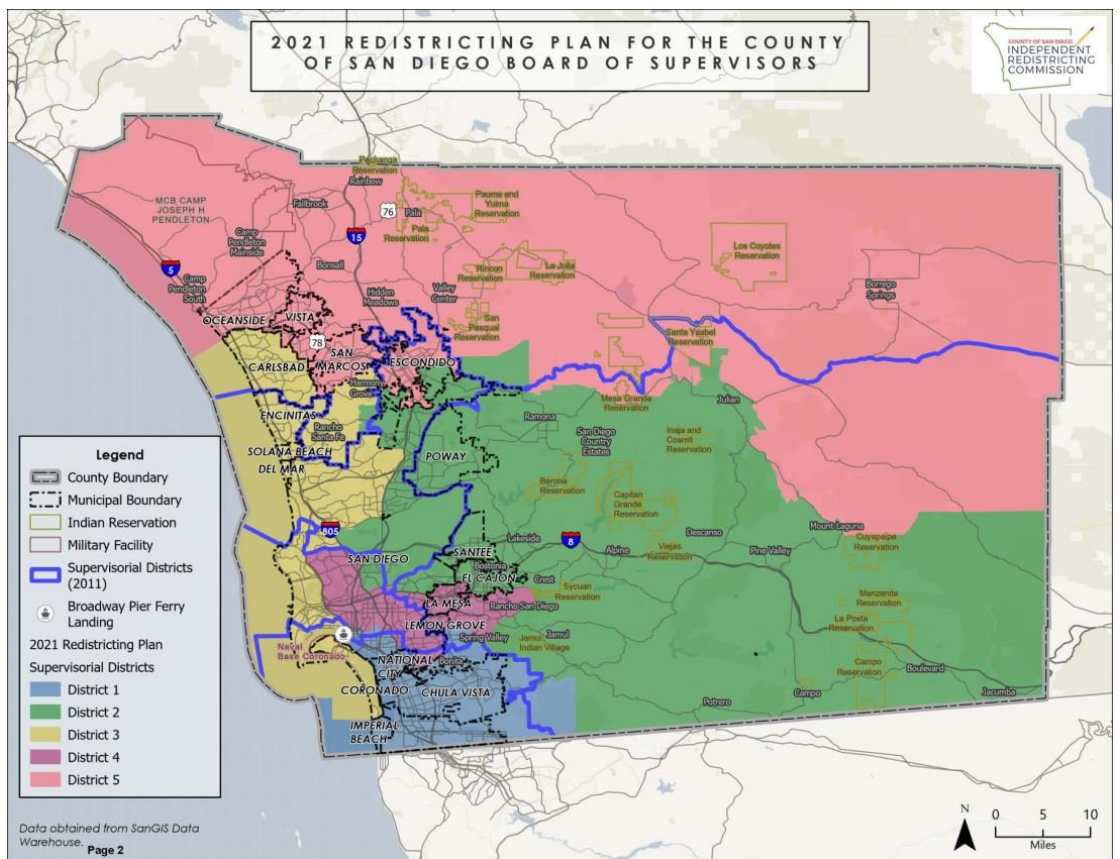




COUNTY OF SAN DIEGO

2021 INDEPENDENT REDISTRICTING COMMISSION

FINAL REPORT



December 15, 2021

**SUPPLEMENTAL RESOLUTION OF THE COUNTY OF SAN DIEGO
INDEPENDENT REDISTRICTING COMMISSION
AMENDING FINAL REPORT TO REFLECT
TECHNICAL AMENDMENTS TO 2021 REDISTRICTING PLAN**

WHEREAS, there is, in the County of San Diego, an Independent Redistricting Commission established in accordance with section 21550 of Chapter 6.5 of Division 21 of the California Elections Code and Section 400 of Article IV of the Charter of the County of San Diego (“Charter”) provides that, for the purpose of electing members of the Board of Supervisors (“board”), the county is divided into five legally apportioned districts, and

WHEREAS, in the year following the year in which the decennial federal census is taken, the commission is required to adjust the boundary lines of the supervisorial districts of the board in accordance with the procedures and criteria set forth in section 21552 of Chapter 6.5 of Division 21 of the Elections Code and in section 400.1 of Article IV of the Charter, and

WHEREAS, on December 14, 2021, pursuant to subdivisions (d)(1) of Section 21552 of Chapter 6.5 of Division 21 of the Elections Code, the commission passed a Resolution adopting a final redistricting plan adjusting the boundaries of the supervisorial districts in compliance with subdivisions (a) and (b) of Section 21552 of Chapter 6.5 of Division 21 of the Elections Code, and

WHEREAS, on December 14, 2021, the commission adopted a report pursuant to subdivision (d)(3) entitled, County of San Diego 2021 Independent Redistricting Commission Final Report (“Final Report”), that explains the basis on which the commission made its decisions in achieving compliance with the criteria described in subdivisions (a) and (b) of Section 21552 of Chapter 6.5 of Division 21 of the Elections Code, and

WHEREAS, on January 26, 2022, the commission passed a Supplemental Resolution Of The County Of San Diego Independent Redistricting Commission Approving Technical Adjustments To The 2021 Redistricting Plan Adjusting The Boundaries Of The Supervisorial Districts (“Supplemental Resolution”), and

WHEREAS, amendments to the Final Report are required to conform to the Supplemental Resolution,

**NOW, THEREFORE, THE COUNTY OF SAN DIEGO INDEPENDENT
REDISTRICTING COMMISSION DOES RESOLVE AS FOLLOWS:**

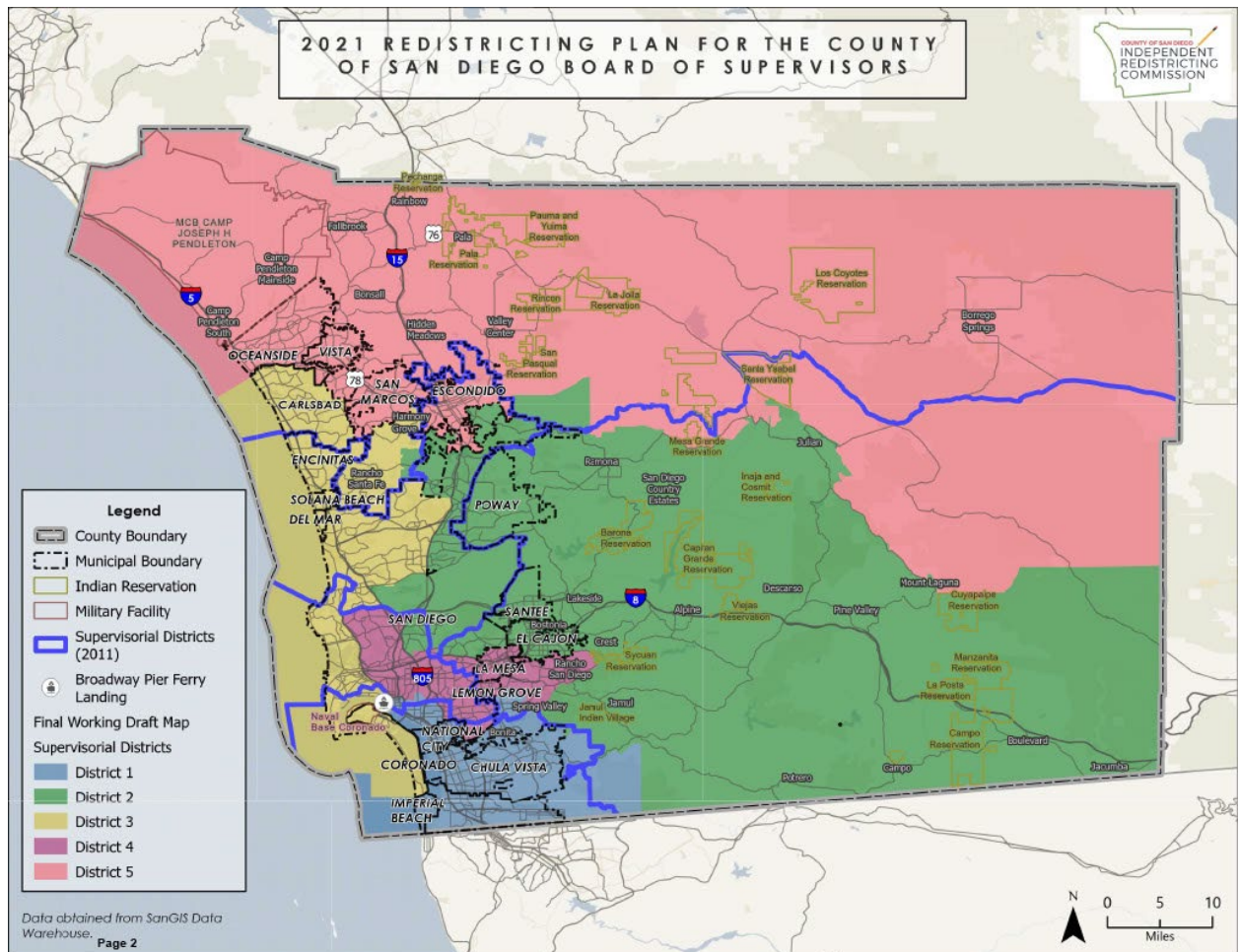
Section 1. The foregoing recitals are true and correct and form the basis of this Resolution.

Section 2. The commission adopts the following amendments to its Final Report to conform with the Supplemental Resolution (text amendments are shown in strike-through text and bolded italic text):

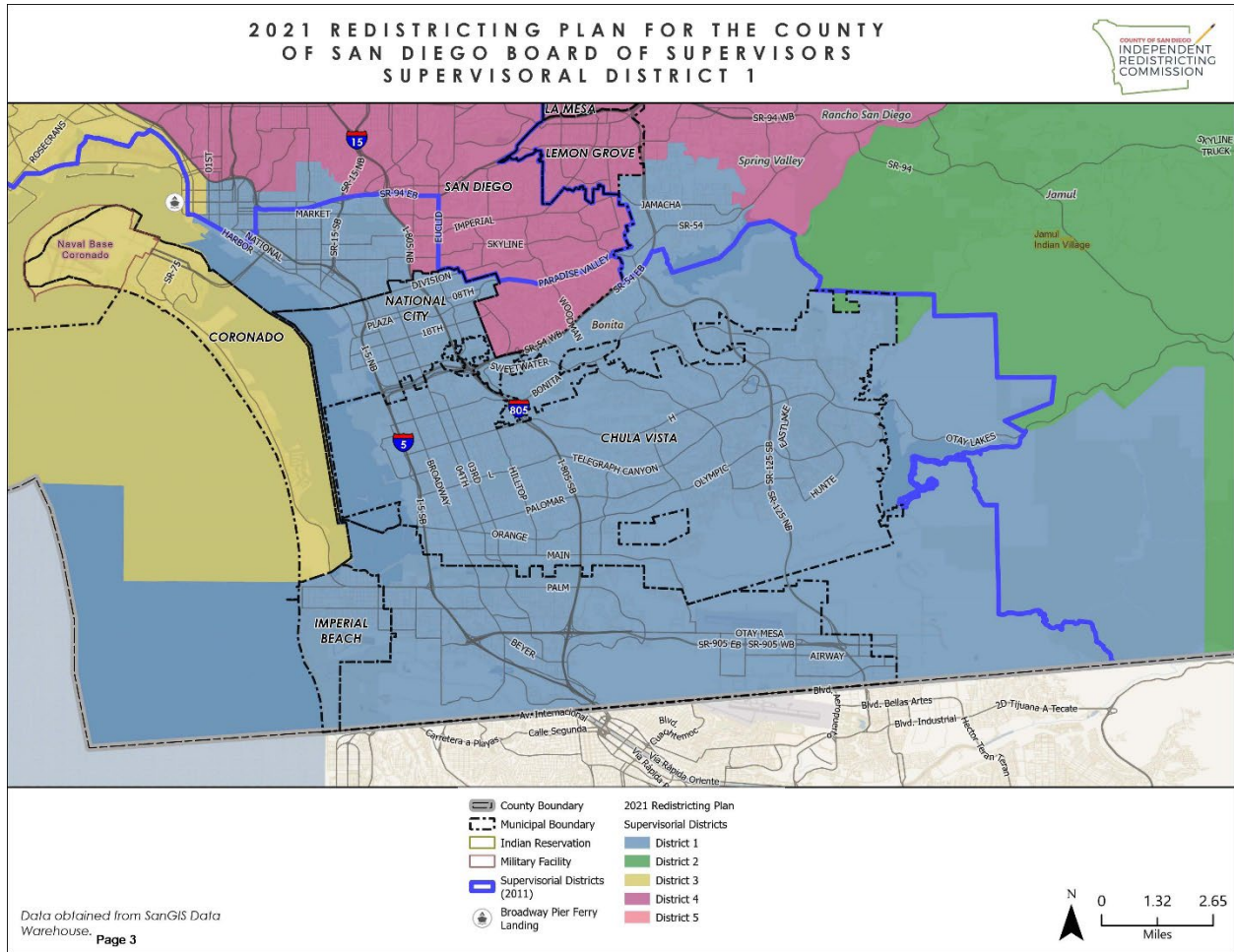
Page 4: Amend the first sentence of the middle paragraph as follows:

The IRC's final map, called "2021 Redistricting Plan for the County of San Diego Board of Supervisors", ***including technical amendments approved on January 26, 2022 that did not involve any population and were consistent with the intent of the plan***, meets all legal requirements: it satisfies the standard for substantially equal population in each district, with deviations from equality as necessary to satisfy other legal criteria; it complies with the federal Voting Rights Act, including two compact majority-minority districts constructed according to community of interest testimony; its districts are contiguous; it divides only one city, the City of San Diego, the population of which is too large for a single district; the configuration of each district reflects community of interest testimony, with geographic division minimized to the extent possible; and finally, after achieving all other legal requirements, the districts are compact as defined in California law and satisfy the requirements of the Charter of the County of San Diego, with all districts including unincorporated territory and two districts with geographic area that is predominantly outside of the incorporated cities.

Page 6: Replace county-wide map with the following amended map:



Page 19: Replace the Map of District 1 with the following amended map:

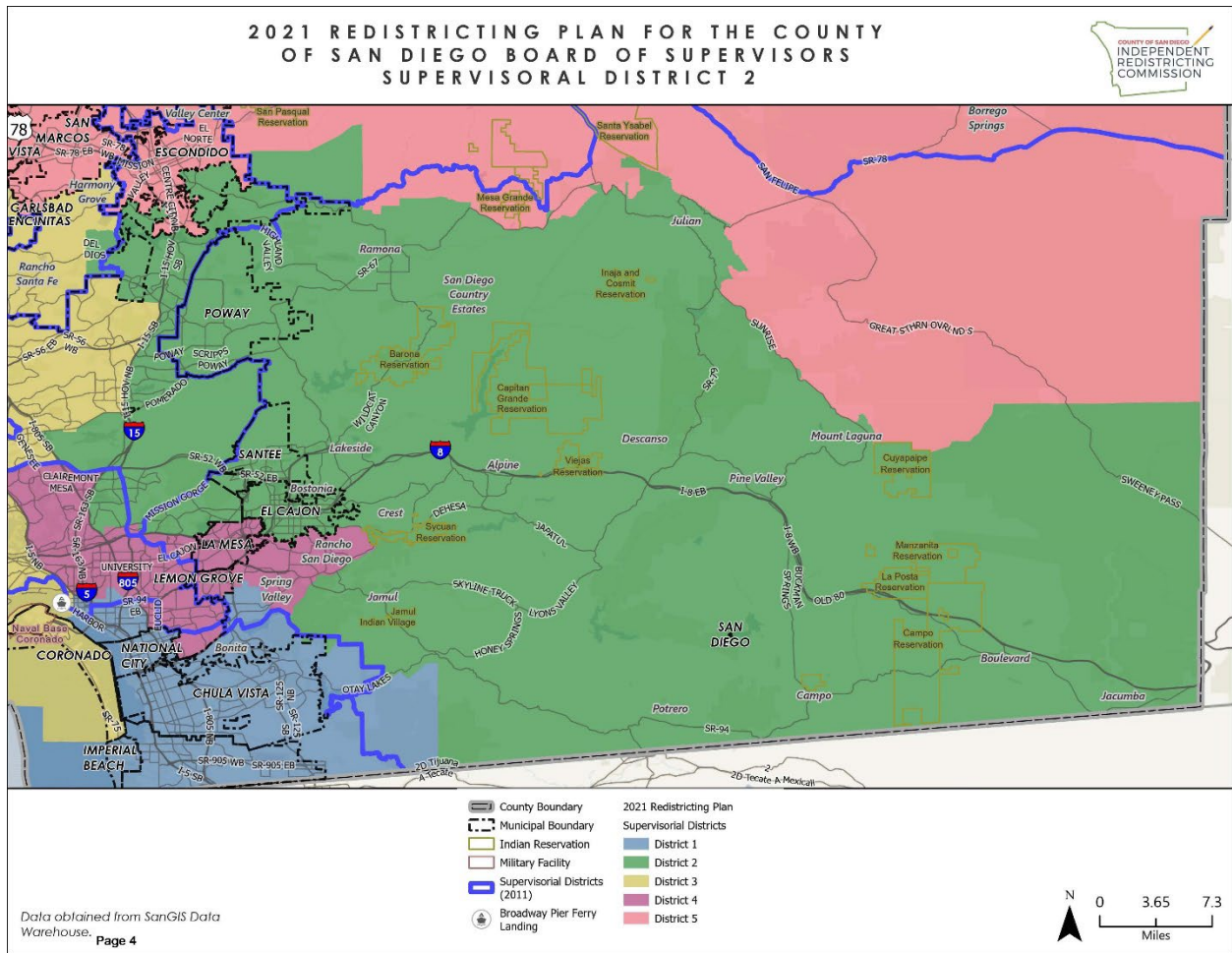


Page 24: Unincorporated Area. Amend chart as follows:

Unincorporated Area

Unincorporated	Total Area (sq mi)	Unincorporated Area (sq mi)	Percent Unincorporated Area	Incorporated Area (sq mi)	Percent Incorporated Area
District 1	175	66-67	38.0% 38.2%	108	62.0% 61.8%

Page 25: Replace the Map of District 2 with the following amended map:



Page 26: Cities & Unincorporated Placed. Amend chart as follows:

Cities and Unincorporated Places

Community Type	Name	Divided	Reason for Division
Census Designated Place	Alpine	False	
Census Designated Place	Bostonia	False	
Census Designated Place	Boulevard	False	
Census Designated Place	Campo	False	
Census Designated Place	Crest	False	
Census Designated Place	Del Dios	False	
Census Designated Place	Descanso	False	
Census Designated Place	Eucalyptus Hills	False	
Census Designated Place	Granite Hills	False	
Census Designated Place	Harbison Canyon	False	

Census Designated Place	Jacumba	False	
Census Designated Place	Jamul	False	
Census Designated Place	Julian	False	
Census Designated Place	Lakeside	False	
Census Designated Place	Mount Laguna	False	
Census Designated Place	Pine Valley	False	
Census Designated Place	Potrero	False	
Census Designated Place	Ramona	False	
Census Designated Place	Rancho San Diego	True	Geographic division only; inevitably split based on the geospatial overlap of the Sycuan Reservation and Rancho San Diego CDP.
Census Designated Place	San Diego Country Estates	False	
Census Designated Place	Winter Gardens	False	
Municipalities	El Cajon	False	

Page 34: Amend chart as follows:

Community of Interest Type	Name or Identifying Information	Divided	Reason for Division
Indian Reservations	Manzanita Reservation	False	
Indian Reservations	Sycuan Reservation	True False	Geographic division only; inevitably split based on the geospatial overlap of the Sycuan Reservation and Rancho San Diego CDP.
Indian Reservations	Viejas Reservation	False	
Military Installations	MCAS Miramar	True False	Geographic division only; split due to large area and overlap with Community Plan Areas that are in different supervisorial districts. Maintaining the MCAS Miramar Military Installation within a single district would split the Kearny Mesa, Tierrasanta, and University Community Plan Areas.
Sanitation Districts	San Diego County Sanitation District L&I	True	Geospatial inevitability; split due to geospatial multi-part nature of the Sanitation District (i.e., the single geospatial polygon includes multiple dis-contiguous areas throughout San Diego County).

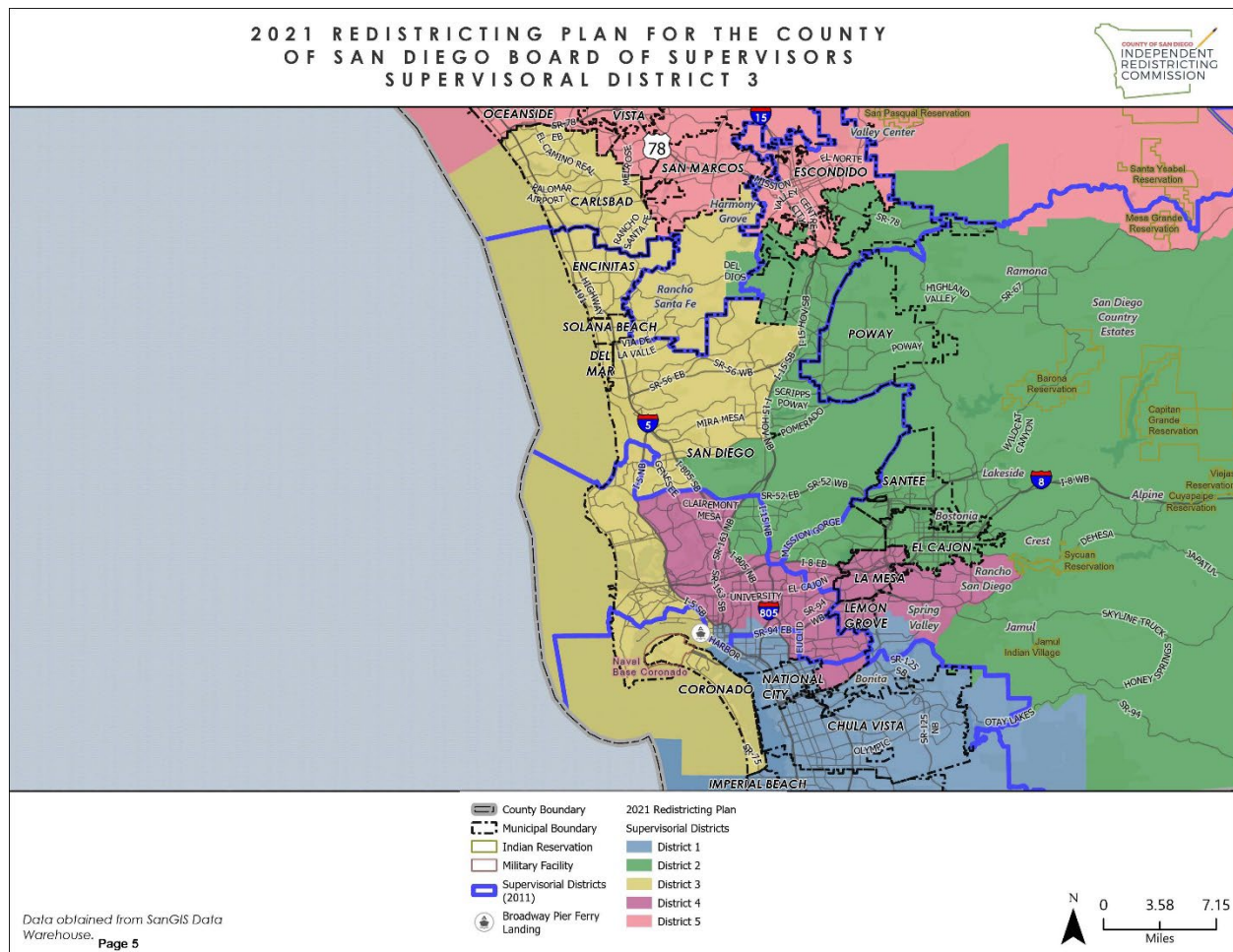
Unified School Districts	Unified Mt Empire	True	Geospatial inevitability; overlapping geography with Desert Community Plan Area.
Unified School Districts	Unified Ramona	True	Overlapping geography with Mesa Grande Indian Reservation.
Unified School Districts	Unified Poway	True	Overlapping geography with Black Mountain Ranch, Rancho Peñasquitos, and Torrey Highlands Community Plans Areas.
Unified School Districts	Unified San Diego	True	Split due to its large geographic area, population density, and overlap with COIs that are in within differing supervisorial districts.
Unified School Districts	Unified Valley Center-Pauma	True	Split to reduce total population of supervisorial district 5 and bolster total population of supervisorial district 2 while maintaining other COIs.
Water Districts	Cuyamaca (Calif) Water Land	False	
Water Districts	Helix Water District - Special Area Land	False	

Page 36: Unincorporated Area. Amend chart as follows:

Unincorporated Area

Unincorporated	Total Area (sq mi)	Unincorporated Area (sq mi)	Percent Unincorporated Area	Incorporated Area (sq mi)	Percent Incorporated Area
District 2	1,567 1568	1,379	88.0%	188 189	12.0%

Page 37: Replace the Map of District 3 with the following amended map:



Page 38: Amend first and second bullet points as follows:

- Community Plan Areas (City of San Diego) entirely within District 3: Black Mountain Ranch, Carmel Valley, Del Mar Mesa, Fairbanks Ranch Country Club, La Jolla, Los Peñasquitos Canyon, Midway-Pacific Highway, Mira Mesa, Mission Bay Park, Mission Beach, North City Future Urbanizing Area NCFUA Subarea-II, Ocean Beach, Pacific Beach, Pacific Highlands Ranch, Peninsula, Rancho Peñasquitos, Torrey Highlands, Torrey Hills, Torrey Pines, **University**, Via De La Valle
- Community Plan Areas (City of San Diego) partially within District 3: Downtown, Reserve, **University**

Page 41: Amend chart as follows:

Community of Interest Type	Name or Identifying Information	Divided	Reason for Division
Community Plan Areas (City of San Diego)	NCFUA Subarea-II	False	
Community Plan Areas (City of San Diego)	Ocean Beach	False	
Community Plan Areas (City of San Diego)	Pacific Beach	False	
Community Plan Areas (City of San Diego)	Pacific Highlands Ranch	False	
Community Plan Areas (City of San Diego)	Peninsula	False	
Community Plan Areas (City of San Diego)	Rancho Peñasquitos	False	
Community Plan Areas (City of San Diego)	Reserve	True	Geographic split only; inevitably split due to the geospatial multi-part nature of the Community Plan Area. The majority of the Reserve Community Plan Area is located west of downtown San Diego, with a portion located east of Scripps Miramar Ranch Community Plan Area.
Community Plan Areas (City of San Diego)	Torrey Highlands	False	
Community Plan Areas (City of San Diego)	Torrey Hills	False	
Community Plan Areas (City of San Diego)	Torrey Pines	False	
Community Plan Areas (City of San Diego)	University	False True	<i>Geographic division only; maintaining the MCAS Miramar Military Installation within a single district split the University Community Plan Areas.</i>
Community Plan Areas (City of San Diego)	Via De La Valle	False	

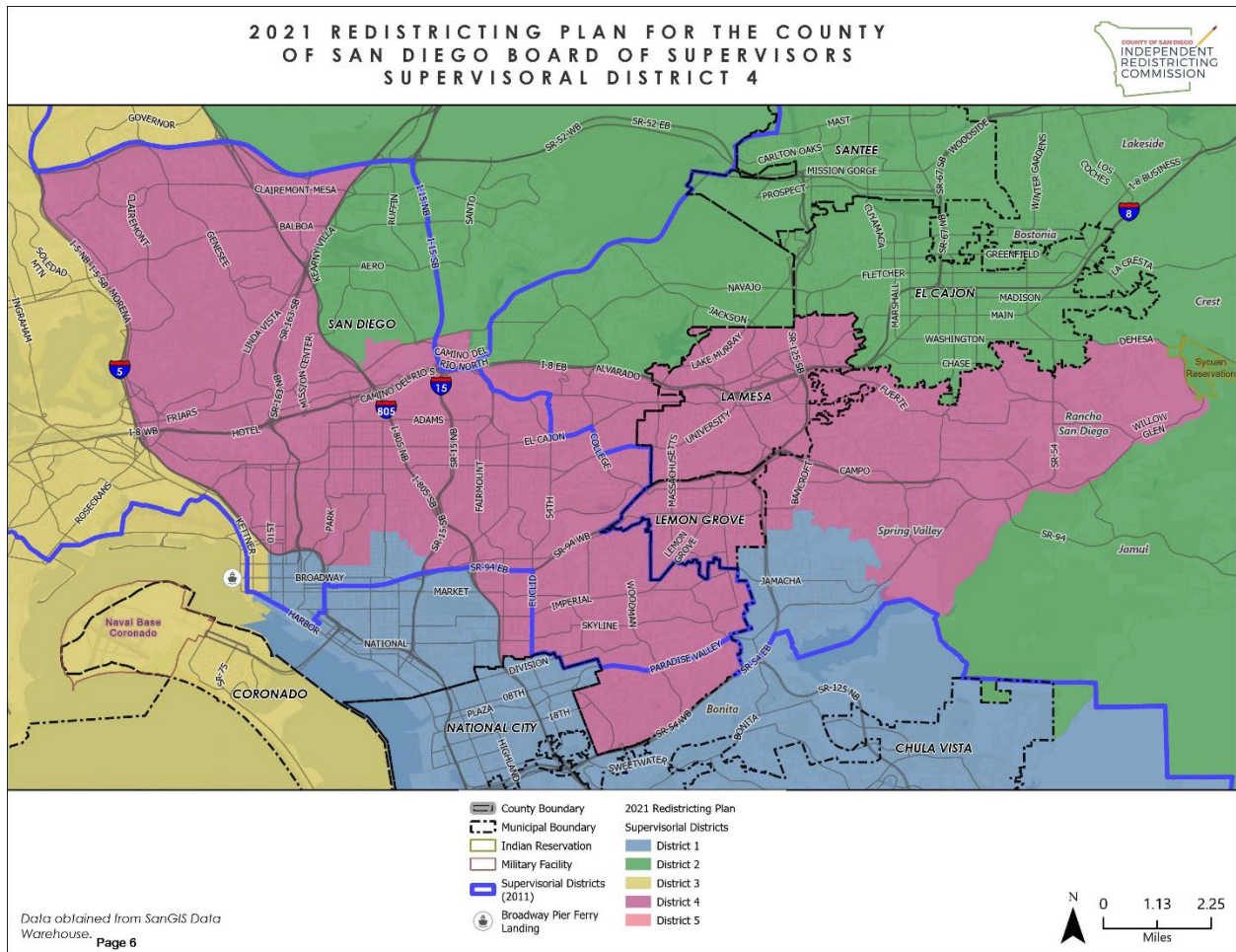
Community Plan Areas (City of San Diego)	Downtown	True	Split to allow for contiguity of supervisorial district 3, based on ferry between City of Coronado and City of San Diego. Substantial public COI
--	----------	------	--

Page 44: Unincorporated Area. Amend chart as follows:

Unincorporated Area

Unincorporated	Total Area (sq mi)	Unincorporated Area (sq mi)	Percent Unincorporated Area	Incorporated Area (sq mi)	Percent Incorporated Area
District 3	231	38	16.3%	494 193	83.7%

Page 45: Replace the Map of District 4 with the following amended map:



Page 46: Cities and Unincorporated Places. Amend chart as follows:

Cities and Unincorporated Places

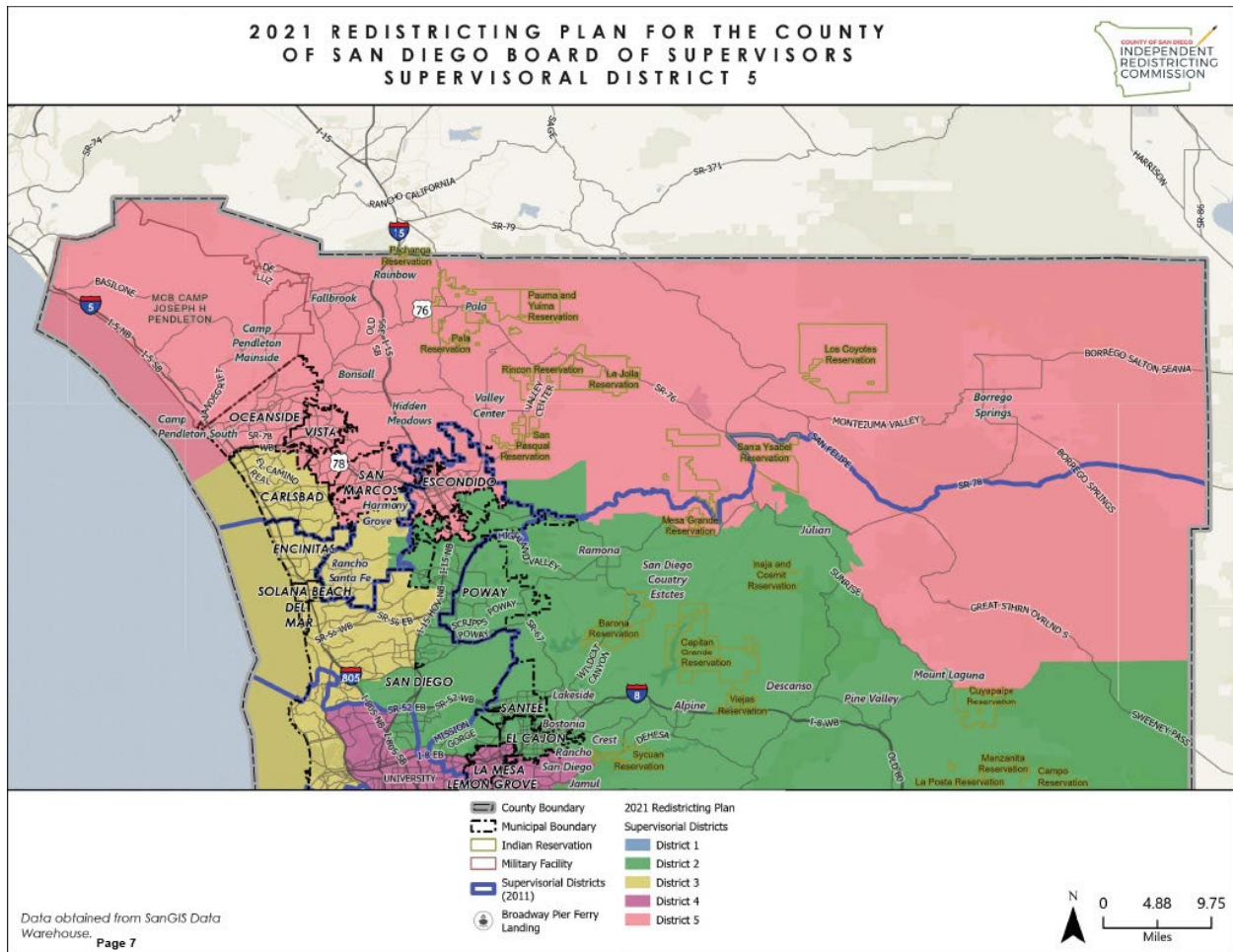
Community Type	Name	Divided	Reason for Division
Census Designated Places	Casa De Oro-Mount Helix	False	
Census Designated Places	Rancho San Diego	False True	<i>Geographic division only; inevitably split based on the geospatial overlap of the Sycuan Reservation and Rancho San Diego CDP.</i>
Census Designated Places	Spring Valley	False	
Municipalities	La Mesa	False	
Municipalities	Lemon Grove	False	
Municipalities	San Diego	True	Split based on its total population being greater than the ideal population of a supervisorial district. With a total population of 1,389,851 (2020 Census), the City of San Diego could be split between as few as three supervisorial districts; however, it is split between four supervisorial districts due to the geospatial shape and expansiveness of the incorporated area.

Page 51: Unincorporated Area. Amend chart as follows:

Unincorporated Area

Unincorporated	Total Area (sq mi)	Unincorporated Area (sq mi)	Percent Unincorporated Area	Incorporated Area (sq mi)	Percent Incorporated Area
District 4	101	23	22.7% 22.6%	78	77.3% 77.4%

Replace the Map of District 5 with the following amended map:



Page 60: Unincorporated Area. Amend chart as follows:

Unincorporated Area

Unincorporated	Total Area (sq mi)	Unincorporated Area (sq mi)	Percent Unincorporated Area	Incorporated Area (sq mi)	Percent Incorporated Area
District 5	2,186 2,185	2,062 2,061	94.3%	124	5.7%

PASSED AND ADOPTED by the County of San Diego Independent Redistricting Commission at a duly noticed meeting held on January 26, 2022, by the following vote:

Ayes:	Bame, Brown, Caterina, Chen, Diaz, Dostal, Garcia, Hansen, Inman, Kruglyak, Larson, Ponds
Noes:	None
Abstain:	None
Absent:	Russ, Surban

A handwritten signature in black ink, appearing to read "David Bame", written over a horizontal line.

David Bame, Chair
County of San Diego
Independent Redistricting Commission

Table of Contents

Introduction	6
Establishment of the Independent Redistricting Commission (IRC)	6
Composition of the IRC	7
Priorities of the IRC and Preparation for the Redistricting Process	7
Other Considerations	8
Meetings	9
Commission Pre-Mapping Activities	9
Outreach Plan and Efforts	10
Selection and Retention of Contractors	11
Pre-Mapping Public Hearings	12
Commission Mapping Activities	13
Legal Considerations	13
Expert Subcontractors	14
Draft Map Public Hearings	15
Additional Outreach	15
FLO Analytics Activities	16
Public Input	16
The Final Plan	17
Overview	17
Plan Demographics	17
District 1	19
District 2	25
District 3	37
District 4	45
District 5	51
Conclusion	60
Effective Date of Final Plan	60
Closing Remarks	60
Appendices	61



COUNTY OF SAN DIEGO

Independent Redistricting Commission

COMMISSIONERS

David Bame, Chair
Amy Caterina, Co-Vice Chair
Rosette Garcia, Co-Vice Chair
Colleen Brown
Chris Chen
Sonia Diaz
Elidia Dostal
Barbara Hansen
Kenneth Inman
Kristina Kruglyak
Arvid Larson
Fernandez Ponds
John Russ
Ramesses Surban

The first-ever County of San Diego Independent Redistricting Commission (IRC), comprised of 14 citizen-members from diverse geographical, political, racial/ethnic, and personal backgrounds, undertook the task of redrawing the boundaries for the County's five supervisorial districts in an impartial manner that complied with law and reinforced public confidence in the integrity of the redistricting process. The IRC acted to promote as broad and diverse public participation as possible in the midst of a global pandemic, including through robust input and discussion using technological options made available under state and local emergency orders, and developed a final redistricting map in full compliance with law and comprising the IRC's best effort in the compressed time available for mapping to fairly represent the residents of San Diego County.

Prior to receipt of the adjusted Census data, delayed by nearly six months because of the impacts of the COVID-19 pandemic, the IRC used the time productively to increase public awareness of the redistricting process, the importance of redistricting, the role of the IRC, and opportunities for public participation. Integral to these efforts were outreach, interpretation, and publication of key information in at least eight languages in addition to English.

To support public confidence in the process, the IRC instituted transparency practices and procedures; retained highly qualified expert demographic, statistical, and legal consultants in a transparent procurement process; retained a professional outreach firm to enhance public awareness through community partners and media contacts, including minority language media. The IRC created and completed a thorough educational and training program for themselves in preparation to execute their duties, including making the training program's resources available to the public.

The IRC held 49 regular and special meetings, most in a hybrid format permitting both in-person and virtual participation. Ten of the meetings were well-attended public hearings throughout the County, held in each of the County's five districts: eight took place before the Commission drafted maps, and two took place after draft maps were developed. In addition to the public hearings, at every meeting of the IRC, the Commission took public comment. The IRC also engaged in additional outreach to community planning groups and civic organizations in response to heightened interest as mapping proceeded. The Commission's outreach efforts were productive with meeting facilities often filled to capacity, numerous public commenters, and substantial input received through the multiple modes of communication. The Commission also encouraged the public to submit

community of interest maps and proposed redistricting maps, providing ready access to redistricting data and computer software equivalent to that available to the commission.

The IRC developed 35 draft maps and versions of draft maps over a period of two months and received 19 maps and partial maps submitted by members of the public, 16 of which were received by the submission deadline. The IRC focused constantly on the requirements of statutory criteria, with special concern for compliance with the federal Voting Rights Act. Every map was published for public review, with detailed data and commentary relative to legal compliance and responsiveness to public input. Electronic mapping facilities enabled the public to compare and contrast maps, test alternatives and overlay other geographies pertinent to communities of interest. Some of the IRC's meetings and hearings included live mapping so that the public could view maps in development. All IRC deliberations concerning maps occurred in public, as the IRC worked to ensure legal compliance and weighed and balanced public testimony that was sometimes complementary and sometimes competing.

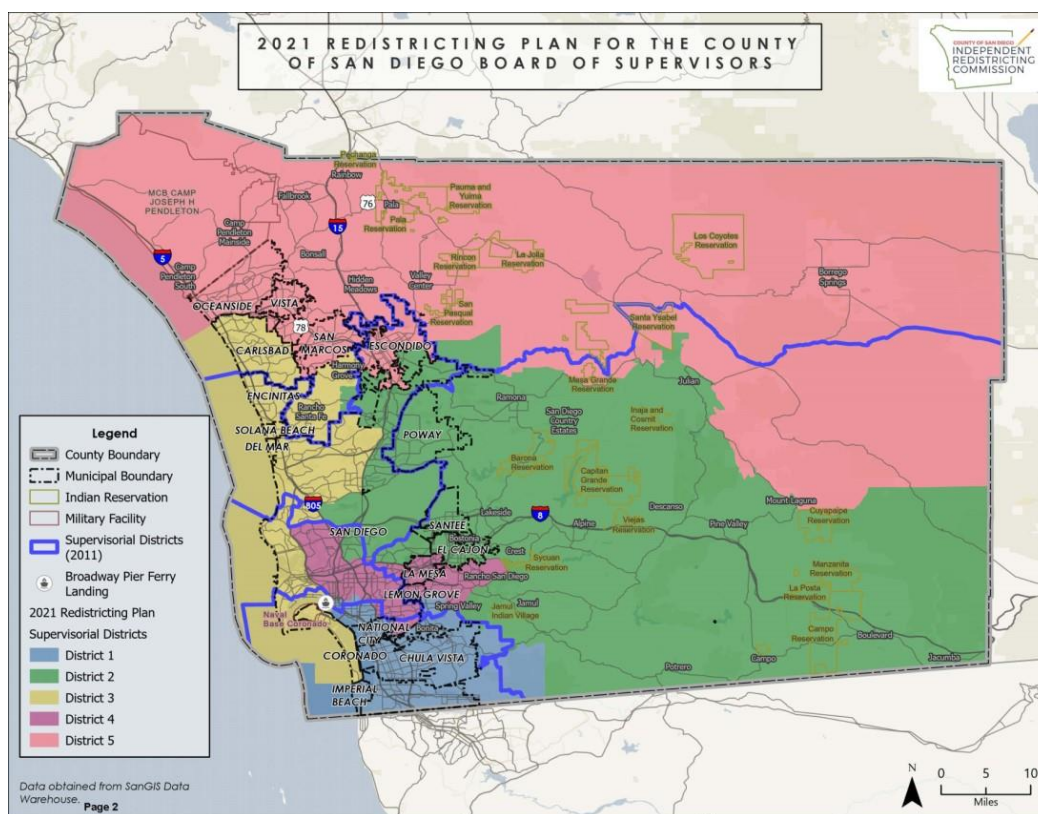
The IRC's final map, called "2021 Redistricting Plan for the County of San Diego Board of Supervisors", meets all legal requirements: it satisfies the standard for substantially equal population in each district, with deviations from equality as necessary to satisfy other legal criteria; it complies with the federal Voting Rights Act, including two compact majority-minority districts constructed according to community of interest testimony; its districts are contiguous; it divides only one city, the City of San Diego, the population of which is too large for a single district; the configuration of each district reflects community of interest testimony, with geographic division minimized to the extent possible; and finally, after achieving all other legal requirements, the districts are compact as defined in California law and satisfy the requirements of the Charter of the County of San Diego, with all districts including unincorporated territory and two districts with geographic area that is predominantly outside of the incorporated cities.

All 14 IRC Commissioners express their thanks to their following teammates:

- Executive Lead Barbara Jiménez and staff Liberty Donnelly, Nicole Temple, Keith Van Wagner, Angela Fang, Chim Lau, Nicole Villa, and Leticia Montoya, whose steady contributions and indefatigable commitment provided ideas, support, and effectiveness that enabled all aspects of the Commission's work.
- Counsels Marguerite Leoni and Hilary Gibson, whose wise advice, thorough research, and mission-oriented answers both educated and supported the IRC in fulfilling its statutory requirements while also following and reinforcing the will of the Commission.
- Clerk David Hall, with earlier contributions from Andrew Potter and Erin Demorest, who ensured the IRC's meetings ran smoothly and efficiently with utmost consideration for public participation.

- IRC Demographer FLO Analytics, especially Alex Brasch, John McKenzie and Kate Elliot, whose mapping and technological wizardry was exceeded only by their energy, commitment, and service to the Commission and the public.
- IRC Outreach and Engagement Consultant, Asian Business Association San Diego, including Jason Paguio, Rozanna Zane, Alex Villafuerte, TJ Zane and their colleagues for helping the IRC both to reach individuals and communities all too often not involved in redistricting or other civic matters and to help those individuals engage and understand the IRC's work.
- Consultants Bruce Adelson, Christian Grose and Natalie Masuoka, for their sage advice and analyses regarding some of the most complex and sensitive data and legal aspects of the IRC's work.
- County employees Richard McCarvell, Caroline Smith, and many others who helped the IRC implement decisions, work with other governmental organizations, and advocate for maximum flexibility and transparency to obtain public input.
- Finally, and most of all, members of the public who attended meetings and offered testimony about their communities throughout the process. Your participation was invaluable, your dedication inspiring. Your input is a fundamental component of the map and is reflected as much as possible, we believe, in the plan that the IRC adopted.

<https://www.sandiegocounty.gov/content/sdc/redistricting.html>
(www.drawyourcommunity.com)



Approved Map of San Diego County Supervisorial Districts as adopted by the Independent Redistricting Commission
on December 11, 2021.

Establishment of the Independent Redistricting Commission (IRC)

In January 2012, the County of San Diego Board of Supervisors voted to seek legislative changes in the California Elections Code and the County Charter SB 1331 (Kehoe), Chapter 508, Statutes of 2012, provided for the creation of a redistricting commission in San Diego County, made up of retired state and federal judges, and charged it with adjusting the boundaries of supervisorial districts after each decennial federal census. In 2017, AB 801 (Weber) repealed provisions of SB 1331 and instead established an

Independent Redistricting Commission (IRC) in the county made up of county citizens and charged it with adjusting the boundaries of supervisorial districts. AB 801 also changed the criteria to be used when the boundaries of supervisorial districts in San Diego County are adjusted. California Elections Code Sections 21550-21553 and the County Charter, Sections 400 and 400.1 now set forth the rules and procedures for redrawing the supervisorial district boundaries of the County of San Diego, placing the responsibility for redistricting with the IRC. See Appendix 1 for more details on legislation.

To comply with the California Elections Code Section 21552(c)(8) which requires the Board of Supervisors to provide for reasonable funding and staffing for the County's IRC, on October 13, 2020, the Board of Supervisors established appropriations of \$750,000 as a preliminary budget for required support of the IRC including public hearings in each supervisorial district, mapping, public outreach, translation, contracted and other services. On January 28, 2021, the IRC approved a line-item budget and on May 13, 2021, upon recommendation of the Budget Ad Hoc Committee, the IRC requested a budget increase of \$467,500 for unanticipated legal services, IT needs, translation and interpretation services and to establish a reserve for future unforeseen expenses, for a total budget of \$1,217,500, which was approved by the San Diego County Board of Supervisors on June 8, 2021. The IRC reviewed the budget on a monthly basis. The IRC Budget can be found as Appendix 18.

Composition of the IRC

The 2020 Census marks the inception of the first IRC, selected to complete the 2021 redistricting of the five County supervisorial districts. The 2021 IRC is comprised of fourteen San Diego County residents who met the qualifications as set forth in Elections Code § 21550. They were selected in a two-part process¹ intended to insure independence from the influence of the Board of Supervisors. As required by the California Elections Code, the political party preference of the Commission members is reasonably proportional to the political party breakdown of the registered voters in the County of San Diego (Republican, Democrat, and No Party Preference), as determined by the then-most recent statewide election. At least two Commissioners reside in each of the supervisorial districts. The 2021 IRC reflects the County's diversity with respect to race, ethnicity, geography, and gender, with an equal number of men and women serving on the IRC. See Appendix 4 for a list of the 2021 Commissioners and their biographies.

Priorities of the IRC and Preparation for the Redistricting Process

The Elections Code § 21551(a) requires the Commission to apply its provisions in a manner that is impartial and that reinforces public confidence in the integrity of the

¹ The first eight Commissioners were selected by random drawing, at least one from each of the 5 districts; the first eight Commissioners then selected the six additional Commissioners from the remaining pool of qualified applicants to ensure a commission that reflected the county's diversity, including racial, ethnic, geographic, and gender diversity, along with the requirement that the political party preferences of the commissioners be generally proportional to the political party breakdown of the County's registered voters. See Appendix 3 for more details.

redistricting process. In carrying out its duty of drawing boundaries for the five supervisorial districts, the IRC committed to ensuring that the final map would fairly represent the residents of San Diego County in accordance with applicable laws, and to ensuring as broad and diverse participation as possible in the redistricting process. The IRC adopted bylaws that emphasized its duty to be fair and impartial and to operate openly and transparently to reinforce public confidence in the integrity of the redistricting process.

The Commissioners undertook a thorough training program to prepare to execute their duties. The program included directed training and self-study on a variety of topics. The IRC established an Ad Hoc Committee on Commissioner Training with a mission to develop a tailored, flexible, and focused Training Continuum and resource repository (database) to enable the Commission to execute its mission, roles, and responsibilities effectively and efficiently.

On March 25, 2021, the IRC approved the implementation of the Training Continuum proposed by the Ad Hoc Committee. Training topics completed by Commissioners, included, among others: the Brown Act; Redistricting 101; the “2020 Census Complete Count” in San Diego County; Census data; language access and outreach to African, Arab, Middle Eastern, Muslim, and South Asian communities; the Voting Rights Act; and demonstrations of the line drawing software and practical exercises in line drawing. These trainings supplied the IRC with background, context, and information required to fulfill their duties as Commissioners and to draw fair and accurate maps.

Additional details on the full Training Continuum, including the dates on which trainings were conducted, are available on the IRC website, as are the training materials, and in Appendix 5. Members of the public are welcome to view the database of resources to review the training received by the IRC.

<https://www.sandiegocounty.gov/content/sdc/redistricting/redistricting-training.html>

Other Considerations

The 2020 Census year and the redistricting time period (November 2020-December 2021) were marked by significant disruption and upheaval, primarily due to the COVID-19 pandemic. Release of Census data was delayed initially by four months, which prompted the California Legislature to extend the deadline for adopting a redistricting map from August 15, 2021 to December 15, 2021². Further delays led to the IRC appointing an Ad Hoc Committee to develop legislative and other recommendations to deal with the loss of time for the redistricting process. The IRC requested an amendment to Senate Bill 594 (Glazer) that would have extended the IRC’s deadline to January 14, 2021, to account for the additional delays in receiving Census data and protect the time for robust public input, but the amendment was not incorporated. However, while its efforts to extend the deadline were ongoing, the IRC continued to plan and establish timelines that protected, to the extent possible, time for public input, consistent with its stated goal to preserve time

² See AB 1276 (Bonta), Chapter 90, Statutes of 2020.

for public participation, with the understanding that the map adoption deadline would remain December 15, 2021.

Safety protocols enacted in response to the pandemic prohibited in-person meetings for the first eight months of the IRC's activity. Public participation continued to be possible as all IRC regular and special meetings public educational presentations, Industry Days (for potential IRC contractors), and public hearings were held virtually over the Zoom platform. Only when safety protocols were relaxed, in August 2021, did Commissioners have the option to meet in person when the IRC conducted public hearings using a hybrid model, offering in-person or virtual participation for Commissioners and members of the public. Throughout the redistricting process, regular and special meetings continued to allow virtual participation, an option that some members of the public and some Commissioners preferred.

Another consideration was that this IRC was the first ever independent redistricting commission for the County of San Diego. Therefore, the Commission had no foundation or precedent or prior experience on which to build its own processes and procedures. The IRC had to determine such matters as a leadership structure, meeting frequency and protocols, rules of procedure and governance, methods for getting projects accomplished including the implementation of ad hoc committees, transparency tools and protocols such as ex parte procedures and a communications log, management of consultants, staffing, budget management and oversight, and so on, without the experience of a prior commission to draw upon. One of the goals of the IRC has been to leave a detailed record of its experiences and to put in place an operational structure upon which the next commission can draw and build in performing its statutory duties for the 2031 redistricting of the County of San Diego.

Meetings

The IRC held 49 regular and special meetings, 10 of which were public hearings: eight (8) took place before the Commission drafted maps and two (2) took place after draft maps were developed. At every meeting of the IRC, the Commission took public comment on communities of interest, draft maps, the process, and many other topics. All meeting recordings and presentations delivered to the IRC can be found on the IRC website at:

<https://www.sandiegocounty.gov/content/sdc/redistricting/IRCmeetings1.html>

Commission Pre-Mapping Activities

The IRC was faced with an unstable and unpredictable timeline as a result of disruptions to Census activities and impacts on schedules due to the pandemic. Nevertheless, the IRC, determined to capitalize on delays, moved ahead with preparing for both the pre-mapping and draft mapping periods by using the extra time (which would be offset by constraints later in the process) to augment outreach to the public as described below.

Outreach Plan and Efforts

In the early stages of the IRC's activities, the Commission was focused on increasing public awareness of the IRC and mounting efforts to engage with the public, consistent with its commitment to obtain as broad and diverse participation as possible in the redistricting process. Integral to this mission was adherence to the legal requirement to offer translation in eight key languages: Spanish, Vietnamese, Chinese, Tagalog, Arabic, Japanese, Korean, and Laotian for each of the following activities:

- Live translation of hearings if a request was received at least 24 hours in advance
- Agendas for each Commission meeting and public hearing notices
- General explanation of the redistricting process on the website

The Commission exceeded legal requirements by providing translation upon request in additional languages and live translation on fewer than 24 hours notice. In addition, all Commission meetings and hearings were made accessible to visually and hearing-impaired participants through accommodations that were provided to them.

Redistricting Outreach and Communications Ad Hoc Committee

The IRC formed a Redistricting Outreach and Communication Ad Hoc Committee, on February 11, 2021, tasked with proposing steps the IRC could take to increase awareness of the IRC and county redistricting prior to hiring an outreach contractor. The Ad Hoc Committee created an interim communications plan, approved by the IRC, that included a recommendation for conducting educational presentations while the IRC was waiting for the delayed Census data. The Ad Hoc Committee also produced a variety of ancillary deliverables such as Frequently Asked Questions (FAQs), a Fact Sheet, and developed procedures for handling public requests for Commissioner presentations and media requests for comments or interviews.

IRC Educational Tour

The IRC approved the Ad Hoc Committee's recommendation to embark on an "educational tour" to educate the public about the IRC, the importance of redistricting, and the process that would be followed. The Ad Hoc Committee developed a presentation, and the IRC scheduled and delivered five educational presentations, all held virtually, due to pandemic restrictions. There were five presentations in each of the supervisorial district with Commissioners from that district serving as presenters. All presentations, regardless of the focus, were open to residents throughout the county. Simultaneous Spanish translation was also offered for the District 1 presentation.

The Ad Hoc Committee developed a list of stakeholders and audiences intended to be reached during this period, including community groups located in the 18 incorporated cities within the county and the unincorporated areas.

IRC staff employed all the tools available to advertise the educational tour, including announcements via County News Center, press releases, email announcements, and social media posts. Commissioners were encouraged to reach out to their networks to elicit requests for presentations. Attendance at these educational presentations totaled 108 individuals. Specific details about the educational presentations, dates, and attendance can be found in Appendix 6.

Selection and Retention of Contractors

The IRC determined that it would require the assistance of two contractors, an outreach contractor and a demographer contractor for expertise in the areas that it identified as necessary to fulfill its statutory requirements.

Outreach and Engagement Contractor Services

On February 11, 2021, the IRC approved the formation of an Ad Hoc Committee to draft the Statement of Work, Evaluation Criteria, and Scoring Criteria to be used in selecting an outreach contractor for IRC Public Outreach and Engagement. The IRC approved the Ad Hoc Committee's proposals, and subsequently, the County of San Diego released Request for Proposals 10926. Following the source selection committee evaluation, on June 24, 2021, the IRC approved Asian Business Association San Diego (ABASD) to provide the services.

ABASD's task was to raise awareness of the redistricting process and promote participation during the pre-mapping public hearings in each of the five supervisorial districts and draft map public hearings by working with its outreach partners throughout the county to reach various communities of interest and maximize public participation. The IRC emphasized to ABASD that a priority was to aim efforts at the hard-to-reach communities of the County, including those in rural, unincorporated areas and those historically under-represented in civic engagement. ABASD's report of its activities and the success of those efforts is included with this report in Appendices 8 and 10.

Demographer Contractor Services

On February 11, 2021, the IRC approved the formation of an Ad Hoc Committee to draft the Statement of Work, Evaluation Criteria, Evaluation Tool, and Submittal Items for the RFP for demographer services. On April 26, 2021, the County of San Diego released Request for Proposals 10673 to acquire a contractor for IRC mapping activities, and following a successful source selection committee evaluation, the IRC approved FLO Analytics (FLO) to provide the services. Specifically, FLO was contracted to:

1. Provide ongoing and special consultation, analysis, and support to the IRC;
2. Analyze Census and other data, statistics, demographics, and maps for the current and proposed revisions of the supervisorial districts;
3. Prepare, draw, and revise draft redistricting maps and prepare recommendations for final revised supervisorial districts based on the IRC and public input;

4. In coordination with the IRC's public outreach and engagement contractor and County staff, develop and implement a process to allow for public comment and suggestions in the drawing of supervisorial district maps, including the submittal of full and partial maps;
5. Provide the IRC with access to appropriate software systems for use in the evaluation of the redistricting map alternatives;
6. Develop and execute a training plan to instruct the IRC and the public participants in use of mapping software and related products;
7. Provide hands-on, live training sessions in use of mapping software and related products (virtually or in-person, as possible); and
8. Provide mapping software available for the public to draw and submit draft supervisorial districts and identify communities of interest, which should include standard demographic profile reports as well as the ability to create customized reports³.

Pre-Mapping Public Hearings

ABASD created an outreach plan for the Pre-Mapping Public Hearings and coordinated all eight Pre-Mapping Public Hearings held between August 12, 2021, and September 25, 2021, at eight different locations throughout the five different districts. Three of the meetings were County-Wide Meetings and five were district-specific meetings, one in each district:

1. August 12, 2021, Mira Mesa Senior Center, County-Wide Meeting
2. August 18, 2021, Bonita Sunnyside Library, District 1
3. August 26, 2021, Ronald Reagan Community Center, District 2
4. September 2, 2021, Escondido Chamber of Commerce, District 3
5. September 9, 2021, Valencia Park/Malcolm X Library, District 4
6. September 18, 2021, Green Dragon Tavern & Museum, County-Wide Meeting
7. September 23, 2021, Vista Civic Center, District 5
8. September 25, 2021, Spring Valley Community Center, County-Wide Meeting

Due to state and local health orders prohibiting large gatherings, as specified in AB 1276, the hearings were conducted in a hybrid in-person/virtual format, using technology that permitted remote viewing and participation with the ability to view and listen to proceedings by video, to listen to proceedings by phone, to provide public comment by phone and in writing, with no limitation on the number of commenters, as well as an opportunity for in-person participation.

Total attendance for the Pre-Mapping Public Hearings from August 12, 2021, to September 25, 2021, was 356 individuals. Of the 356 attendees, 107 [30%] attended in person and 249 [70%] attended virtually. Additional details on attendees may be found in Appendix 7.

³ The mapping program was made available in the eight key languages: Spanish, Vietnamese, Chinese, Tagalog, Arabic, Japanese, Korean, and Laotian.

Commission Mapping Activities

The Commission prepared for mapping by undertaking training activities, actively engaging the public, as described above, and retaining the services of a qualified demographic firm and other expert consultants, as described below. Mapping commenced after receipt of the adjusted Census data in early October 2021.

Legal Considerations

The IRC adhered to Section 21552 of the Elections Code in making mapping decisions that yielded the final adopted map. These statutory requirements are detailed below. The Commission was required to establish single-member supervisorial districts for the board pursuant to a mapping process using the following Elections Code criteria as set forth in the following order of priority:

- Districts shall comply with the United States Constitution and each district shall have a reasonably equal population with other districts for the board, except where deviation is required to comply with the federal Voting Rights Act of 1965 (52 U.S.C. Sec. 10101 et seq.) or is allowable by law.⁴
- Districts shall comply with the federal Voting Rights Act of 1965 (52 U.S.C. 10101 et seq.).
- Districts shall be geographically contiguous.
- The geographic integrity of any city, local neighborhood, or local COI shall be respected in a manner that minimizes its division to the extent possible without violating the requirements of paragraphs (1) to (3) inclusive. A COI is a contiguous population that shares common social and economic interests that should be included within a single district for purposes of its effective and fair representation. Communities of interest shall not include relationships with political parties, incumbents, or political candidates.
- To the extent practicable, and where it does not conflict with paragraphs (1) to (4) inclusive, districts shall be drawn to encourage geographical compactness such that nearby areas of population are not bypassed for more distant areas of population.
- The place of residence of any incumbent or political candidate shall not be considered in the creation of a map.
- Districts shall not be drawn for purposes of favoring or discriminating against an incumbent, political candidate, or political party.

In addition, per the Charter of the County of San Diego section 400.1, the supervisorial district boundaries shall be drawn in such a way that the area of at least three districts

⁴ Notwithstanding this requirement, an incarcerated person, as that term is used in Section 21003 of the Elections Code, was not counted towards the county's population, except for an incarcerated person whose last known place of residence may be assigned to a census block in the county in the adjusted database provided by the California Statewide Database and used by the Commission for the redistricting.

shall include unincorporated territory with two of the districts having geographic area that is predominantly outside of the incorporated cities as population will permit.

Federal Voting Rights Act

Section 2 of the federal Voting Rights Act (VRA) prohibits electoral practices or procedures, including redistricting plans, that have the intent or effect of denying or abridging the right of any citizen to vote on account of race or color, or membership in a language minority group, 52 U.S.C. § 10301(a). Compliance supersedes all other state-law redistricting criteria.

Because of the importance of complying with the VRA the IRC retained two subcontractors as described in the Expert Subcontractors section below, to provide analyses and guidance on racially polarized voting; minority coalition voting; crossover voting by white voters; the ability of minorities to elect a representative of choice; and the VRA and its application. The Commission received several reports during the draft mapping process. Prior to the Commission adopting its final redistricting plan for the County, the racially polarized voting expert team provided an analysis of the ability of minority voters to elect chosen candidates in each of the new supervisorial districts and special VRA counsel provided his legal opinion that each of the districts in the Commission's final plan complied with the VRA. All reports and presentations made by these expert subcontractors can be found in Appendices 13 and 14 attached to this report.

Expert Subcontractors

Upon recommendation of the demographer contractor and legal counsel, the Commission directed and approved retention of two subcontractors with specialized expertise in critical topics, to guide the IRC in their mapping process, as described below.

Federal Voting Rights Act Statistical Expert Team

The IRC directed FLO to retain a subcontractor to analyze racially polarized voting in the county. FLO selected a team of political scientists, Dr. Christian Grose, Dr. Natalie Masuoka, and Dr. Jordan Carr Peterson, statistical experts in racially polarized voting, a key element in determining VRA compliance. They reviewed the past ten years of elections in San Diego County, including all supervisorial elections and relevant statewide elections, and produced an extensive report, showing that racially polarized voting occurred in the County during this period. They also assessed the incidents of coalitional voting among racial groups and cross-over voting by white voters, and also provided information to the Commission about the ability of racial minorities in each existing supervisorial district to elect candidates of choice. This report by Drs. Grose, Masuoka, and Peterson, and the presentations they made to the Commission about these topics, as well as the credentials of these experts, are contained in Appendix 13 to this report.

Special Voting Rights Act Counsel

The IRC approved a subcontractor for expert counsel in the interpretation of the VRA. The IRC established an Ad Hoc Committee to issue a request for qualifications and recommend selection of Special Voting Rights Act Counsel to guide the Commission on legal issues arising under Section 2 of the VRA. At the recommendation of the Ad Hoc Committee, the IRC retained Bruce Adelson of Federal Compliance Consulting LLC to provide legal guidance in the application of the VRA.

As the Commission's Special Voting Rights Act Counsel, Mr. Adelson provided the Commission with an interpretation of the statistical evidence developed by the racially polarized voting expert team and guidance on the consideration of race in the development of the districts in the Commission's final plan. Mr. Adelson's opinion and the presentations he made to the Commission are included in Appendix 14.

Draft Map Public Hearings

ABASD created a Draft Map Public Hearing Outreach Plan to engage the maximum number of participants for the two Draft Map Public Hearings:

1. November 1, 2021, City of Chula Vista City Hall Chambers
2. December 2, 2021, San Diego County Office of Education

As with the Pre-Mapping Public Hearings, the Draft Map Public Hearings were also offered in a hybrid virtual/in-person format, pursuant to the requirements of AB 1276. Total attendance, virtual and in-person, for the Draft Map Public Hearings was 760 and the total number of comments received from the public was 803. Additional details on attendance may be found in Appendix 9.

Additional Outreach

During this period, the IRC also engaged in additional outreach, facilitated by ABASD, to community planning groups and civic organizations in response to heightened attention as the mapping proceeded. The presentations were focused on educating attendees on the redistricting process and the opportunities available for them to participate. Commissioners presented to the following groups:

1. November 3, 2021, Lakeside Community Planning Group
2. November 8, 2021, Valley Center Planning Group
3. November 9, 2021, Jamul Dulzura Community Planning Group
4. November 9, 2021, Campo Lake Morena Community Planning Group
5. November 9, 2021, Pine Valley Community Planning Group
6. November 11, 2021, San Dieguito Planning Group
7. November 15, 2021, Fallbrook Planning Group
8. November 15, 2021, Chollas Valley Community Planning Group
9. November 15, 2021, Borrego Springs Community Sponsor Group

10. November 19, 2021, San Diego Law Library

FLO Analytics Activities

During this time, FLO also hosted an internet-based viewer where all maps – public, consultant, and commission-made – were collected, along with relevant data and geospatial community of interest (COI) polygons and other COI information. All these materials were available to the public to facilitate studying draft maps and comparing and contrasting features and approaches. FLO also compiled a database of public input and developed a tool to search the database for themes and geographies, as well as words. Every public comment and submission also was collected and preserved by the Commission in an Excel document available for public review.

Public Input

The results of the IRC's outreach efforts are reflected not only in attendance at the public hearings, but also in the number of communications received from members of the public and groups through the multiple modes provided to receive public input. The Commission received the following public comment, not including comments received in the meetings, as of the close of their December 11, 2021 meeting at 7:14 pm:

- 3,513 E-Comments
- 288 E-mailed comments
- 32 Letters
- 23 Telephone calls

A comprehensive collection of public input is provided in the Public Comment and COI Tracker which can be found at:

https://www.sandiegocounty.gov/content/sdc/redistricting/Public_Comment_and_COI.html

Community of Interest Testimony

The Commission actively invited the submission of COI testimony and provided a dedicated mapping tool at the IRC website (Community Builder Tool) that members of the public could use to map their COI as well as describe it in writing. The Commission also received COI testimony at the pre-mapping public hearings and in writing. COI testimony continued to be solicited and submitted throughout the mapping process.

Publicly Submitted Maps

The Commission also encouraged the submission of proposed redistricting maps and individual districts by members of the public, and, to facilitate submission, provided to the public ready access to redistricting data and computer software equivalent to what was available to the commission members. The Commission also encouraged, received, and processed hand-drawn maps, as well as those drawn in various computerized mapping

programs. The Commission received a total of 19 whole and partial maps created by members of the public and groups, 16 of those before the submission deadline. All 19 maps submitted by the public can be found in Appendix 11.

The Final Plan

Overview

On October 7, 2021, the IRC began the mapping process following the required waiting period after receipt of the Official Statewide Database Census data, and completion of commissioner training on the mapping tool developed by FLO Analytics for use by the IRC (District Scenario Modeler).

The mapping process launched with FLO presenting to the IRC (1) a report summarizing public input and (2) four “Springboard Maps” depicting public input and COI testimony received to date. These four springboard scenarios preceded the development of Draft Maps 1-4 on motion of the Commission, and over the course of the subsequent 9 weeks the IRC deliberated over and revised these maps at seven separate regular and special meetings and two public hearings. The penultimate map, “Draft Map 13a version 11” (also called the “Final Working Draft Map”), was further amended at a meeting held on December 9, 2021, and the version “Final Working Draft Map Scenario 3b” moved forward for adoption. The Commission adopted its final map on December 11, 2021.

Details on the process, including a diagram charting the evolution of the draft maps and action taken by the Commission can be found in Appendix 12.

Plan Demographics

Overall Deviation

The overall plan deviation is 8.1%

Deviation By District

The total population & deviation per district is as follows:

District ID	Total Population	Over / Under Ideal	Deviation From Ideal
1	636,367	-24,085	-3.6%
2	636,285	-24,167	-3.7%
3	663,790	3,338	0.5%
4	675,829	15,377	2.3%
5	689,991	29,539	4.5%

Total Population By Race/Ethnicity per district

The tables below show the breakdown of the population in each district by race and ethnicity:

District ID	White	Black or African American	American Indian or Alaska Native	Asian	Native Hawaiian and Pacific Islander	Some Other Race	Two or More Races	Hispanic/Latino
1	17.2%	5.3%	0.2%	11.6%	0.4%	0.5%	3.4%	61.4%
2	57.2%	3.4%	0.6%	10.6%	0.3%	0.6%	6.1%	21.0%
3	58.7%	1.8%	0.2%	18.9%	0.2%	0.6%	6.0%	13.5%
4	38.6%	8.7%	0.3%	13.0%	0.5%	0.6%	5.1%	33.2%
5	43.3%	2.8%	0.7%	6.7%	0.5%	0.5%	4.6%	40.9%

California Statewide Database (CA SWDB) Adjusted 2020 Census P.L. 94-171 Redistricting Data - Total Population by Race and Hispanic/Latino origin.

The voting age population by race/ethnicity per district is as follows:

District ID	White	Black or African American	American Indian or Alaska Native	Asian	Native Hawaiian and Pacific Islander	Some Other Race	Two or More Races	Hispanic/Latino
1	19.7%	5.6%	0.3%	12.5%	0.4%	0.4%	3.0%	58.2%
2	60.7%	3.4%	0.5%	10.8%	0.4%	0.6%	4.9%	18.8%
3	61.0%	1.9%	0.2%	19.0%	0.2%	0.6%	4.7%	12.4%
4	42.0%	8.4%	0.3%	13.8%	0.5%	0.6%	4.4%	30.0%
5	47.4%	3.0%	0.7%	7.2%	0.6%	0.5%	3.9%	36.8%

CA SWDB Adjusted 2020 Census P.L. 94-171 Redistricting Data - Voting-age Population (VAP) by Race and Hispanic/Latino origin.

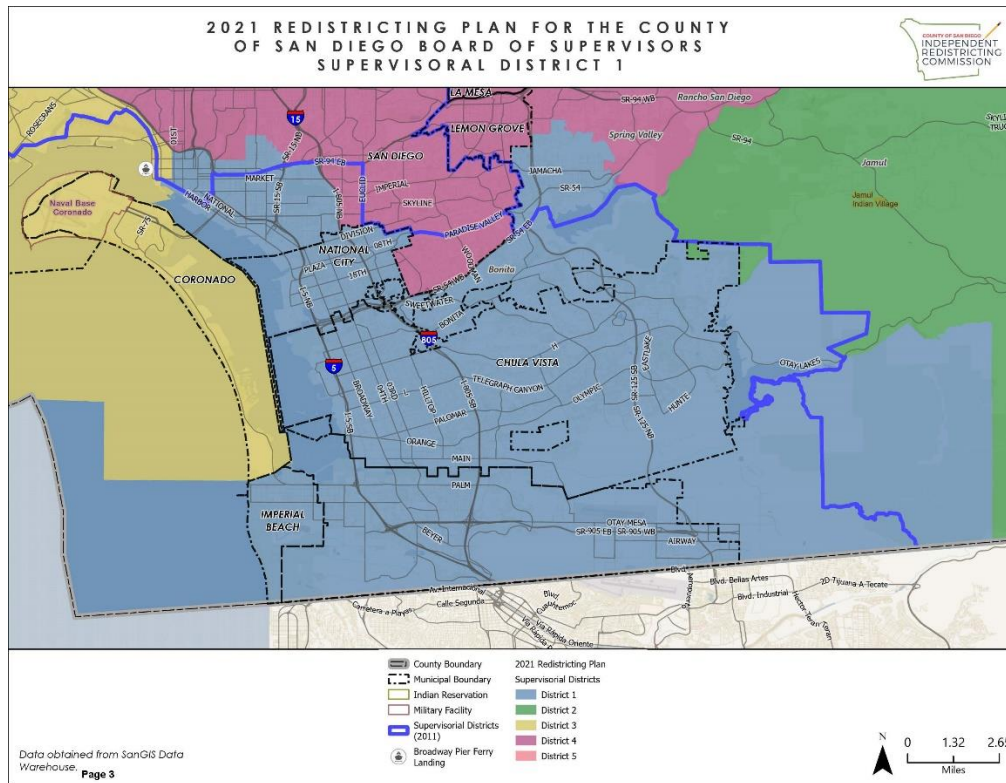
Citizen voting age population by race/ethnicity estimates per district are as follows:

District ID	White	Black or African American	American Indian or Alaska Native	Asian	Native Hawaiian and Pacific Islander	Two or More Races	Hispanic/Latino
1	24.8%	6.9%	0.2%	12.9%	0.6%	2.1%	52.5%
2	68.8%	3.4%	0.5%	8.5%	0.3%	2.9%	15.4%
3	68.8%	2.2%	0.2%	14.3%	0.3%	2.8%	11.1%

4	48.6%	10.2%	0.2%	12.0%	0.5%	3.1%	25.3%
5	56.4%	3.7%	0.9%	6.2%	0.4%	2.6%	29.6%

CA SWDB Adjusted 2015-2019 American Community Survey Citizen Voting-age Population (CVAP) by Race and Ethnicity Special Tabulation. Rounding may lead to summation of percentages not equal to 100% (+/- 1%).

District 1



Approved Map of District 1 as adopted on December 11, 2021

District 1 is in the southwestern portion of the County. The district's southern border begins at the eastern edge of the Otay Community Plan Area (Unincorporated County) and travels along the international border to the western extent of the City of Imperial Beach. The western border extends north from the City of Imperial Beach, east of the City of Coronado, and ends at the northern border of the Downtown Community Plan Area (City of San Diego). The northern border follows the boundaries of the Greater Golden Hill Community Plan Area (City of San Diego) and the Southeastern San Diego Community Plan Area (City of San Diego). It then follows the borders of the City of National City and the Sweetwater Community Plan Area (Unincorporated County) to the outer boundary of the La Presa Census Designated Place which it follows until again following the Sweetwater Community Plan Area (Unincorporated County) boundary. The eastern border of District 1 follows the City of Chula Vista municipal boundary, then travels south to include the Otay Community Plan Area (Unincorporated County).

- Municipalities entirely within District 1: City of Chula Vista, City of Imperial Beach, City of National City

- Municipalities partially within District 1: City of San Diego
- Community Plan Areas (City of San Diego) entirely within District 1: Barrio Logan, Greater Golden Hill, Otay Mesa, Otay Mesa-Nestor, San Ysidro, Southeastern San Diego, Tijuana River Valley
- Community Plan Areas (City of San Diego) partially within District 1: Downtown, Military Facilities
- Community Plan Areas (Unincorporated County) entirely within District 1: Otay, Sweetwater
- Community Plan Areas (Unincorporated County) partially within District 1: County Islands, Jamul, Spring Valley

The Commission achieved compliance with the criteria described in subdivisions (a) & (b) of Section 21552 as follows:

Cities and Unincorporated Places

Community Type	Name	Divided	Reason for Division
Census Designated Place	Bonita	False	
Census Designated Place	La Presa	False	
Municipality	Chula Vista	False	
Municipality	Imperial Beach	False	
Municipality	National City	False	
Municipality	San Diego	True	Split based on its total population being greater than the ideal population of a supervisorial district. With a total population of 1,389,851 (2020 Census), the City of San Diego could be split between as few as three supervisorial districts; however, it is split between four supervisorial districts due to the geospatial shape and expansiveness of the incorporated area.

Reasonably Equal Population and Demographics

See Plan Demographics, above.

Compliance with Voting Rights Act

The IRC's Special Voting Rights Act counsel has stated the opinion that the IRC's Final Redistricting Plan does not appear to have the purpose or effect of diluting minority voting strength. District 1 is majority Latino in eligible voter population. The IRC's statistical/political science experts advised that the plan appears to retain Latinos' ability

to elect preferred candidates in District 1. See Special Voting Rights Act counsel Bruce Adelson's legal opinion in Appendix 14 and the Report Assessing the Opportunity for Latino and Minority Voters to Elect Candidates of Choice in the 2021 Redistricting Plan for the County of San Diego Board of Supervisors by Dr. Christian Grose and Dr. Natalie Masuoka in Appendix 13.

Geographic Contiguity

District 1 is contiguous as specified in California law.

Community of Interest Integrity

Community of Interest Type	Name or Identifying Information	Divided	Reason for Division
Community Builder spatial-submitted COIs	Lincoln Acres	False	
Community Builder spatial-submitted COIs	South Bay	True	Does not perfectly align with administrative boundaries.
Community Builder spatial-submitted COIs	BIPOC, Immigrant & Refugee	True	Includes multiple COIs; does not perfectly align with administrative boundaries.
Community Builder spatial-submitted COIs	Lakeside and unincorporated areas within the existing District 2	True	Includes multiple COIs; does not align with administrative boundaries.
Community Builder spatial-submitted COIs	I live in North Encanto but a lot of our resources as in La Mesa, Lemon Grove, or in the city.	True	Includes multiple COIs.
Community Plan Areas - Representative Planning and Sponsor Groups (Non-City of San Diego)	Otay	False	
Community Plan Areas - Representative Planning and Sponsor Groups (Non-City of San Diego)	Sweetwater	False	
Community Plan Areas - Representative Planning and Sponsor Groups (Non-City of San Diego)	County Islands	True	Inevitably split due to geospatial multi-part nature of the Community Plan Area (i.e., the single geospatial polygon includes multiple dis-contiguous areas throughout San Diego County).
Community Plan Areas - Representative	Spring Valley	True	Split due to the Community Plan Area being comprised of the La

Community of Interest Type	Name or Identifying Information	Divided	Reason for Division
Planning and Sponsor Groups (Non-City of San Diego)			Presa and Spring Valley CDPs, which are within District 1 and District 4, respectively, based on COI testimony.
Community Plan Areas - Representative Planning and Sponsor Groups (Non-City of San Diego)	Jamul	True	Inevitably split based on the geospatial nature of the boundary between the Jamul and Otay Community Plan Areas. Two census blocks, with a total population of six, cannot be included with the majority of the Jamul Community Plan Area in supervisorial district 2, because the two blocks would cause dis-contiguity of supervisorial district 1.
Community Plan Areas (City of San Diego)	Barrio Logan	False	
Community Plan Areas (City of San Diego)	Greater Golden Hill	False	
Community Plan Areas (City of San Diego)	Otay Mesa	False	
Community Plan Areas (City of San Diego)	Otay Mesa-Nestor	False	
Community Plan Areas (City of San Diego)	San Ysidro	False	
Community Plan Areas (City of San Diego)	Southeastern San Diego	False	
Community Plan Areas (City of San Diego)	Tijuana River Valley	False	
Community Plan Areas (City of San Diego)	Downtown	True	Split to allow for contiguity of supervisorial district 3, based on ferry between City of Coronado and City of San Diego. Substantial public COI testimony supported inclusion of City of Coronado in District 3.
Community Plan Areas (City of San Diego)	Military Facilities	True	Inevitably split due to the geospatial multi-part nature of the Community Plan Area. The majority of the Military Facilities Community Plan Area is located in Miramar, while a small portion is located south of the Barrio Logan Community Plan Area.
Elementary School Districts	Gen Elem San Ysidro	False	

Community of Interest Type	Name or Identifying Information	Divided	Reason for Division
Elementary School Districts	Gen Elem Chula Vista	True	Geospatial inevitability; overlapping geography with La Presa CDP and Jamul Community Plan Area.
Elementary School Districts	Gen Elem South Bay Union	True	Overlapping geography with City of Coronado.
Elementary School Districts	Gen Elem National	True	Geospatial inevitability; overlapping geography with Encanto Community Plan Area.
Elementary School Districts	Gen Elem La Mesa-Spring Valley	True	Overlapping geography with La Presa, Spring Valley, and Casa de Oro-Mount Helix CDPs.
Fire Districts	Bonita-Sunnyside Fire Protection District	False	
Fire Districts	Lower Sweetwater Fire Protection District	False	
Fire Districts	San Miguel Consol. Fire Protection District	True	Geospatial inevitability based on overlapping geography with Cities of Lemon Grove, La Mesa, and El Cajon.
High School Districts	High Sweetwater Union	True	Geospatial inevitability; overlapping geography with La Presa CDP and Jamul Community Plan Area.
High School Districts	High Grossmont Union	True	Overlapping geography with City of Santee and unincorporated East County (e.g., Rancho San Diego, Alpine, and Jamul CDPs).
Military Installations	Naval Base San Diego	False	
Military Installations	Naval Outlying Field I.B.	False	
Sanitation Districts	San Diego County Sanitation District L&I	True	Geospatial inevitability; split due to geospatial multi-part nature of the Sanitation District (i.e., the single geospatial polygon includes multiple dis-contiguous areas throughout San Diego County).
Unified School Districts	Unified San Diego	True	Split due to its large geographic area, population density, and overlap with COIs that are within different supervisorial districts.
Water Districts	Otay Water Imp Dist No 27-debt Service (Water)	False	

Community of Interest Type	Name or Identifying Information	Divided	Reason for Division
Water Districts	South Bay Irrigation Land	False	
Water Districts	Otay Water District	True	Overlapping geography with unincorporated East County (e.g., Rancho San Diego, Spring Valley, and Jamul CDPs), which is in supervisorial district 2.
Water Districts	Helix Water District Land	True	Overlapping geography with unincorporated East County (e.g., Rancho San Diego, Spring Valley, Granite Hills CDPs), which is in supervisorial district 2.

Geographical Compactness

Where it does not conflict with other mandatory criteria, District 1 is compact such that nearby areas of population are not bypassed for more distant areas of population.

Place of Residence of Incumbents

The Commission did not take into consideration the place of residence of any incumbent, or political candidate when drawing District 1.

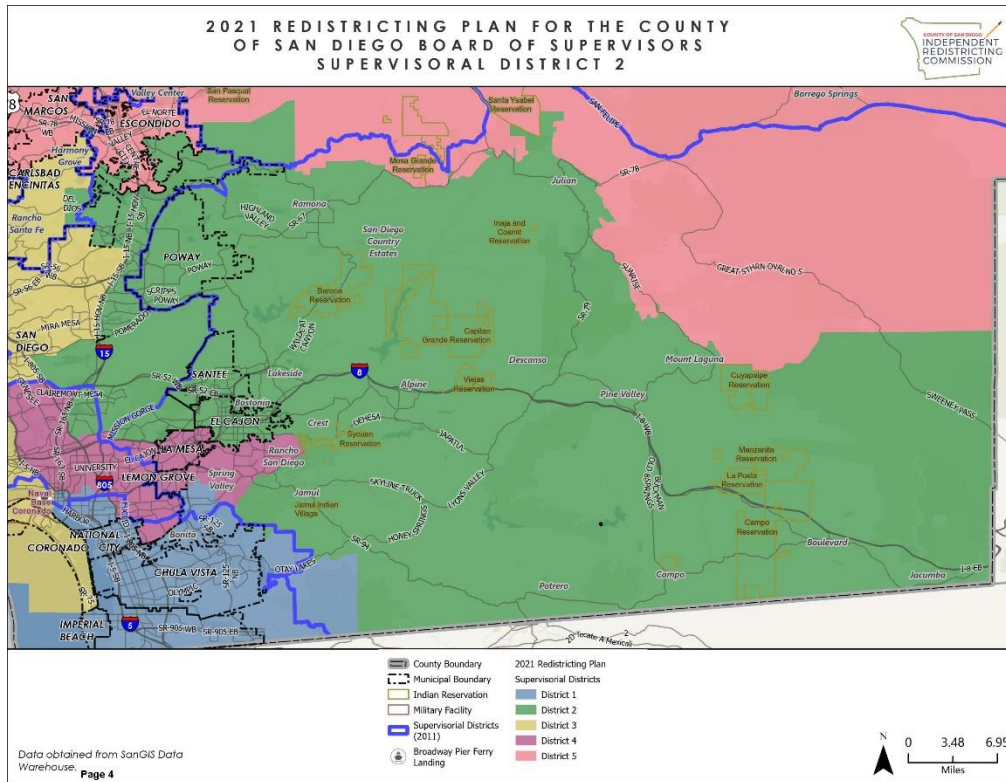
Purposeful Discrimination for or Against an Incumbent, Political Candidate, or Political Party

The Commission did not draw District 1 for the purpose of favoring or discriminating against an incumbent, political candidate, or political party.

Unincorporated Area

Unincorporated	Total Area (sq mi)	Unincorporated Area (sq mi)	Percent Unincorporated Area	Incorporated Area (sq mi)	Percent Incorporated Area
District 1	175	66	38.0%	108	62.0%

District 2



Approved Map of District 2 as adopted on December 11, 2021

Beginning at the southwestern corner of the Jamul Community Plan Area (Unincorporated County), the District 2 border travels east along the international border to the County's eastern border with Imperial County. It then travels northward along the Imperial County border until the Desert Community Plan Area boundary, at which point it heads west-northwest to include Central Mountain and Julian Community Plan Areas (Unincorporated County). The boundary travels west to include the majority of the Ramona Community Plan Area (Unincorporated County) and the unincorporated areas to the east and southeast of the City of Escondido, including parts of the North County Metro Community Plan Area (Unincorporated County), the entirety of the Ranch Bernardo Community Plan Area, and the eastern portion of the San Dieguito Community Plan Area (Unincorporated County).

The border then moves east and south into the City of San Diego along the western border of the Carmel Mountain Ranch, Sabre Springs, Miramar Ranch North, Scripps Miramar Ranch, and Military Facilities Planning Areas (City of San Diego). The district continues south to include portions of the Kearny Mesa and Serra Mesa Community Plan Areas (City of San Diego), then moves east to include the Tierrasanta and Navajo Community Plan Areas (City of San Diego) and the City of El Cajon. Following the southern border of the City of El Cajon, the boundary meets and follows the eastern

boundary of the Ranch San Diego Census Designated Place to the Jamul Community Plan Area (Unincorporated County).

- Municipalities entirely within District 2: City of Poway, City of Santee, City of El Cajon
- Municipalities partially within District 2: City of San Diego
- Community Plan Areas (City of San Diego) entirely within District 2: Carmel Mountain Ranch, East Elliott, Miramar Ranch North, Navajo, Rancho Bernardo, Rancho Encantada, Sabre Springs, San Pasqual, Scripps Miramar Ranch, Tierrasanta
- Community Plan Areas (City of San Diego) partially within District 2: Downtown, Military Facilities
- Community Plan Areas (Unincorporated County) entirely within District 2: Otay, Sweetwater
- Community Plan Areas (Unincorporated County) partially within District 2: County Islands, Jamul, Spring Valley

The Commission achieved compliance with the criteria described in subdivisions (a) & (b) of Section 21552 as follows:

Cities and Unincorporated Places

Community Type	Name	Divided	Reason for Division
Census Designated Place	Alpine	False	
Census Designated Place	Bostonia	False	
Census Designated Place	Boulevard	False	
Census Designated Place	Campo	False	
Census Designated Place	Crest	False	
Census Designated Place	Del Dios	False	
Census Designated Place	Descanso	False	
Census Designated Place	Eucalyptus Hills	False	
Census Designated Place	Granite Hills	False	
Census Designated Place	Harbison Canyon	False	
Census Designated Place	Jacumba	False	
Census Designated Place	Jamul	False	
Census Designated Place	Julian	False	
Census Designated Place	Lakeside	False	
Census Designated Place	Mount Laguna	False	
Census Designated Place	Pine Valley	False	
Census Designated Place	Potrero	False	
Census Designated Place	Ramona	False	
Census Designated Place	San Diego Country Estates	False	
Census Designated Place	Winter Gardens	False	
Municipalities	El Cajon	False	

Community Type	Name	Divided	Reason for Division
Municipalities	Poway	False	
Municipalities	Santee	False	
Municipalities	San Diego	True	Split based on its total population being greater than the ideal population of a supervisorial district. With a total population of 1,389,851 (2020 Census), the City of San Diego could be split between as few as three supervisorial districts; however, it is split between four supervisorial districts due to the geospatial shape and expansiveness of the incorporated area.

Reasonably Equal Population and Demographics

See Plan Demographics, above.

Compliance with Voting Rights Act

The IRC's Special Voting Rights Act counsel has stated the opinion that the IRC's Final Redistricting Plan does not appear to have the purpose or effect of diluting minority voting strength. Minority eligible voters are not sufficiently numerous to constitute a majority in District 2.

Geographic Contiguity

District 2 is contiguous as specified in California law.

Community of Interest Integrity

Community of Interest Type	Name or Identifying Information	Divided	Reason for Division
Community Builder spatial-submitted COIs	Ramona (1 of 2)	True	Does not perfectly align with administrative boundaries.
Community Builder spatial-submitted COIs	Ramona (2 of 2)	True	Does not perfectly align with administrative boundaries.
Community Builder spatial-submitted COIs	BIPOC Immigrant and Refugee	True	Includes multiple COIs.

Community of Interest Type	Name or Identifying Information	Divided	Reason for Division
Community Builder spatial-submitted COIs	Magic Back Country	True	Includes multiple COIs; does not align with administrative boundaries.
Community Builder spatial-submitted COIs	Lakeside and unincorporated areas within the existing District 2	True	Includes multiple COIs; does not align with administrative boundaries.
Community Builder spatial-submitted COIs	Grossmont-Mt. Helix	True	Does not perfectly align with administrative boundaries (named area is not split according to boundary data provided by SanGIS).
Community Builder spatial-submitted COIs	AAPI communities	True	Includes multiple COIs; does not perfectly align with administrative boundaries.
Community Builder spatial-submitted COIs	I live in North Encanto but a lot of our resources as in La Mesa, Lemon Grove, or in the city.	True	Includes multiple COIs.
Community Builder spatial-submitted COIs	Inland North County	True	Includes multiple COIs; does not align with administrative boundaries.
Community Builder spatial-submitted COIs	North County San Diego Asian Diaspora	True	Includes multiple COIs.
Community Builder spatial-submitted COIs	Carlsbad and North County neighbors	True	Includes multiple COIs.
Community Builder spatial-submitted COIs	North County (1 of 2)	True	Exceeds ideal population; includes multiple COIs
Community Builder spatial-submitted COIs	78 Corridor	True	Exceeds ideal population; includes multiple COIs.
Community Builder spatial-submitted COIs	North Coastal: includes the cities of Carlsbad, Encinitas, Solano Beach, and Del Mar along with the unincorporated communities	True	Includes multiple COIs.

Community of Interest Type	Name or Identifying Information	Divided	Reason for Division
	of Fairbank Ranch and Rancho Santa Fe.		
Community Builder spatial-submitted COIs	Elfin Forest, Harmony Grove, Eden Valley - the united rural communities.	True	Does not perfectly align with administrative boundaries (named area is not split according to boundary data provided by SanGIS and Elfin Forest / Harmony Grove Town Council).
Community Builder spatial-submitted COIs	North County (2 of 2)	True	Includes multiple COIs
Community Plan Areas - Representative Planning and Sponsor Groups (Non-City of San Diego)	Alpine	False	
Community Plan Areas - Representative Planning and Sponsor Groups (Non-City of San Diego)	Barona	False	
Community Plan Areas - Representative Planning and Sponsor Groups (Non-City of San Diego)	Boulevard	False	
Community Plan Areas - Representative Planning and Sponsor Groups (Non-City of San Diego)	Central Mountain	False	
Community Plan Areas - Representative Planning and Sponsor Groups (Non-City of San Diego)	Cuyamaca	False	
Community Plan Areas - Representative Planning and Sponsor Groups (Non-City of San Diego)	Descanso	False	
Community Plan Areas - Representative Planning and Sponsor Groups (Non-City of San Diego)	Jacumba	False	

Community of Interest Type	Name or Identifying Information	Divided	Reason for Division
Community Plan Areas - Representative Planning and Sponsor Groups (Non-City of San Diego)	Julian	True	Geographic split only; inevitably split based on the geospatial nature of boundary between Julian and North Mountain Community Plan Areas.
Community Plan Areas - Representative Planning and Sponsor Groups (Non-City of San Diego)	Lake Morena / Campo	False	
Community Plan Areas - Representative Planning and Sponsor Groups (Non-City of San Diego)	Lakeside	False	
Community Plan Areas - Representative Planning and Sponsor Groups (Non-City of San Diego)	Mountain Empire	False	
Community Plan Areas - Representative Planning and Sponsor Groups (Non-City of San Diego)	Pine Valley	False	
Community Plan Areas - Representative Planning and Sponsor Groups (Non-City of San Diego)	Potrero	False	
Community Plan Areas - Representative Planning and Sponsor Groups (Non-City of San Diego)	Tecate	False	
Community Plan Areas - Representative Planning and Sponsor Groups (Non-City of San Diego)	Jamul	True	Inevitably split based on the geospatial nature of the boundary between the Jamul and Otay Community Plan Areas. Two census blocks, with a total population of six, cannot be included with the majority of the Jamul Community Plan Area in supervisorial district 2, because the two blocks would cause dis-contiguity of supervisorial district 1.
Community Plan Areas - Representative	Ramona	True	Split in order to keep Mesa Grande Indian Reservation, which is in the

Community of Interest Type	Name or Identifying Information	Divided	Reason for Division
Planning and Sponsor Groups (Non-City of San Diego)			northeast corner of the Ramona Community Plan Area, wholly within supervisorial district 5 with other North County Indian Reservations.
Community Plan Areas - Representative Planning and Sponsor Groups (Non-City of San Diego)	Crest - Dehesa	True	Inevitably split based on the geospatial overlap of the Crest - Dehesa Community Plan Area and Rancho San Diego CDP.
Community Plan Areas - Representative Planning and Sponsor Groups (Non-City of San Diego)	San Dieguito	True	Split between supervisorial districts 2 and 3 due to its large area and total population. The Census Designated Places within the San Dieguito Community Plan Area are wholly maintained within either supervisorial district 2 or 3.
Community Plan Areas - Representative Planning and Sponsor Groups (Non-City of San Diego)	North County Metro	True	Inevitably split due to geospatial multi-part nature of the Community Plan Area (i.e., the single geospatial polygon includes multiple dis-contiguous areas throughout San Diego County).
Community Plan Areas - Representative Planning and Sponsor Groups (Non-City of San Diego)	Valle De Oro	True	Inevitably split based on the geospatial nature of boundary between Valle de Oro Community Plan Area and Jamul CDP.
Community Plan Areas - Representative Planning and Sponsor Groups (Non-City of San Diego)	Desert	True	Inevitably split based on the geospatial overlap of the Desert and Mountain Empire Community Plan Areas.
Community Plan Areas - Representative Planning and Sponsor Groups (Non-City of San Diego)	County Islands	True	Inevitably split due to geospatial multi-part nature of the Community Plan Area (i.e., the single geospatial polygon includes multiple dis-contiguous areas throughout San Diego County).
Community Plan Areas (City of San Diego)	Carmel Mountain Ranch	False	
Community Plan Areas (City of San Diego)	East Elliott	False	
Community Plan Areas (City of San Diego)	Miramar Ranch North	False	
Community Plan Areas (City of San Diego)	Navajo	False	
Community Plan Areas (City of San Diego)	Rancho Bernardo	False	

Community of Interest Type	Name or Identifying Information	Divided	Reason for Division
Community Plan Areas (City of San Diego)	Rancho Encantada	False	
Community Plan Areas (City of San Diego)	Sabre Springs	False	
Community Plan Areas (City of San Diego)	San Pasqual	False	
Community Plan Areas (City of San Diego)	Scripps Miramar Ranch	False	
Community Plan Areas (City of San Diego)	Tierrasanta	False	
Community Plan Areas (City of San Diego)	Kearny Mesa	True	Split based on IRC 12/3/2021 motion instructing Convoy area—an identified COI bounded by SR-52 on the north, I-805 on the east and SR-163 on the west—to be included within supervisorial district 4.
Community Plan Areas (City of San Diego)	Serra Mesa	True	Split based on IRC 12/3/2021 motion instructing Birdland area—bounded by SR-163 to the east, I-805 to the west, and north of the Mission Valley Community Plan Area—to be included within supervisorial district 4.
Community Plan Areas (City of San Diego)	Military Facilities	True	Inevitably split due to the geospatial multi-part nature of the Community Plan Area. The majority of the Military Facilities Community Plan Area is located in Miramar, while a small portion is located south of the Barrio Logan Community Plan Area.
Elementary School Districts	Gen Elem Alpine Union	False	
Elementary School Districts	Gen Elem Jamul-Dulzura Union	False	
Elementary School Districts	Gen Elem Lakeside Union	False	
Elementary School Districts	Gen Elem Santee	False	
Elementary School Districts	Gen Elem Spencer Valley	True	Overlapping geography with North Mountain Community Plan Area.
Elementary School Districts	Gen Elem Cajon Valley Union	True	Overlapping geography with unincorporated East County (e.g., Rancho San Diego, Granite Hills CDPs).

Community of Interest Type	Name or Identifying Information	Divided	Reason for Division
Elementary School Districts	Gen Elem Dehesa	True	Inevitably split based on the geospatial overlap of Gen Elem Dehesa and Rancho San Diego CDP.
Elementary School Districts	Gen Elem Julian Union	True	Overlapping geography with North County Indian Reservations.
Elementary School Districts	Gen Elem San Pasqual Union	True	Geospatial inevitability; overlapping geography with City of Escondido.
Elementary School Districts	Gen Elem La Mesa-Spring Valley	True	Overlapping geography with La Presa, Spring Valley, and Casa de Oro-Mount Helix CDPs.
Elementary School Districts	Gen Elem Escondido Union	True	Overlapping geography with Harmony Grove.
Fire Districts	Alpine Fire Protection District	False	
Fire Districts	Lakeside Fire Protection District	False	
Fire Districts	Rancho Santa Fe Fire Protection Dist. Of Sd County	True	Split due to its large area and total population, as well as inevitable split due to overlapping geography with City of Escondido.
Fire Districts	San Miguel Consol. Fire Protection District	True	Geospatial inevitability based on overlapping geography with Cities of Lemon Grove, La Mesa, and El Cajon.
High School Districts	High Julian Union	True	Overlapping geography with North County Indian Reservations.
High School Districts	High Grossmont Union	True	Overlapping geography with City of Santee and unincorporated East County (e.g., Rancho San Diego, Alpine, and Jamul CDPs).
High School Districts	High Escondido Union	True	Overlapping geography with Harmony Grove and southeast of Escondido.
Indian Reservations	Barona Reservation	False	
Indian Reservations	Campo Reservation	False	
Indian Reservations	Cuyapaipe Reservation	False	
Indian Reservations	La Posta Reservation	False	

Community of Interest Type	Name or Identifying Information	Divided	Reason for Division
Indian Reservations	Manzanita Reservation	False	
Indian Reservations	Sycuan Reservation	True	Geographic division only; inevitably split based on the geospatial overlap of the Sycuan Reservation and Rancho San Diego CDP.
Indian Reservations	Viejas Reservation	False	
Military Installations	MCAS Miramar	True	Geographic division only; split due to large area and overlap with Community Plan Areas that are in different supervisorial districts. Maintaining the MCAS Miramar Military Installation within a single district would split the Kearny Mesa, Tierrasanta, and University Community Plan Areas.
Sanitation Districts	San Diego County Sanitation District L&I	True	Geospatial inevitability; split due to geospatial multi-part nature of the Sanitation District (i.e., the single geospatial polygon includes multiple dis-contiguous areas throughout San Diego County).
Unified School Districts	Unified Mt Empire	True	Geospatial inevitability; overlapping geography with Desert Community Plan Area.
Unified School Districts	Unified Ramona	True	Overlapping geography with Mesa Grande Indian Reservation.
Unified School Districts	Unified Poway	True	Overlapping geography with Black Mountain Ranch, Rancho Peñasquitos, and Torrey Highlands Community Plans Areas.
Unified School Districts	Unified San Diego	True	Split due to its large geographic area, population density, and overlap with COIs that are in within differing supervisorial districts.
Unified School Districts	Unified Valley Center-Pauma	True	Split to reduce total population of supervisorial district 5 and bolster total population of supervisorial district 2 while maintaining other COIs.
Water Districts	Cuyamaca (Calif) Water Land	False	
Water Districts	Helix Water District - Special Area Land	False	

Community of Interest Type	Name or Identifying Information	Divided	Reason for Division
Water Districts	Lakeside Water District Land	False	
Water Districts	Padre Dam Muni Water Imp Dist #1 (Eastern Portion)	False	
Water Districts	Padre Dam Muni Water Imp Dist B	False	
Water Districts	Padre Dam Muni Water Imp Dist D	False	
Water Districts	Padre Dam Muni Water Imp Dist No 2	False	
Water Districts	Padre Dam Muni Water Imp Dist U-1	False	
Water Districts	Padre Dam Municipal Water District	False	
Water Districts	Poway Muni Water Imp Dist U-3 (Dissolved)	False	
Water Districts	Ramona Municipal Water District	False	
Water Districts	South Bay Irrigation 75 Detachment Land	False	
Water Districts	Wynola (Calif) Water Dist. Land	False	
Water Districts	Rincon Del Diablo Muni Id.E (Formerly F&G)	True	Geospatial inevitability – overlapping geography with City of Escondido, which is in supervisorial district 5.
Water Districts	Rincon Del Diablo Muni Water Imp Dist A	True	Geospatial inevitability – overlapping geography with City of Escondido, which is in supervisorial district 5.

Community of Interest Type	Name or Identifying Information	Divided	Reason for Division
Water Districts	Helix Water District Land	True	Overlapping geography with unincorporated East County (e.g., Rancho San Diego, Spring Valley, Granite Hills CDPs), which is in supervisorial district 2.
Water Districts	Olivenhain Muni Water Imp Dist A	True	Split due to the division of the San Dieguito Community Plan Area.
Water Districts	Olivenhain Municipal Water District	True	Split due to the division of the San Dieguito Community Plan Area.
Water Districts	Rincon Del Diablo Municipal Water District	True	Overlapping geography with Harmony Grove CDP, which is in supervisorial district 3, and unincorporated areas southwest of City of Escondido, which are in supervisorial district 2.
Water Districts	Otay Water District	True	Overlapping geography with unincorporated East County (e.g., Rancho San Diego, Spring Valley, and Jamul CDPs), which is in supervisorial district 2.

Geographical Compactness

Where it does not conflict with other mandatory criteria, District 2 is compact such that nearby areas of population are not bypassed for more distant areas of population.

Place of Residence of Incumbents

The Commission did not take into consideration the place of residence of any incumbent, or political candidate when drawing District 2.

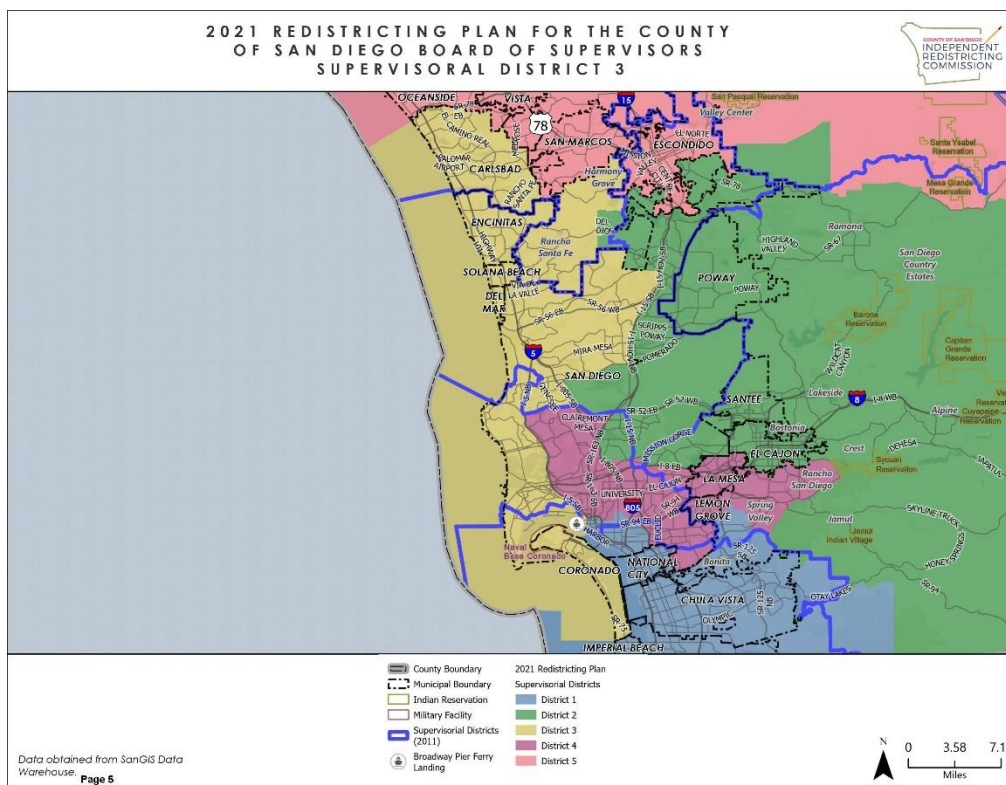
Purposeful Discrimination for or Against an Incumbent, Political Candidate, or Political Party

The Commission did not draw District 2 for the purpose of favoring or discriminating against an incumbent, political candidate, or political party.

Unincorporated Area

Unincorporated	Total Area (sq mi)	Unincorporated Area (sq mi)	Percent Unincorporated Area	Incorporated Area (sq mi)	Percent Incorporated Area
District 2	1,567	1,379	88.0%	188	12.0%

District 3



From the south, District 3 extends northward along the coast to include the City of Coronado, the coastal areas of the City of San Diego, the Cities of Del Mar, Solana Beach, Encinitas, and Carlsbad. The border then moves east along the southern boundary of the Cities of Oceanside, Vista, San Marcos, and Escondido. The boundary then travels south through the San Dieguito planning area, including the Harmony Grove, Elfin Forest, and Rancho Santa Fe Census Designated Places, then heads east along the northern border of the Black Mountain Ranch Community Plan Area (City of San Diego) and south along the eastern boundary of the Rancho Peñasquitos, Mira Mesa, and University Community Plan Areas (City of San Diego). The border moves west along the northern border of the Clairemont Mesa Community Plan Area (City of San Diego) to the La Jolla Community Plan Area (City of San Diego) border then south to include the Pacific Beach, Mission Beach, Midway-Pacific Highway, Reserve, and the far western portion of the Downtown Community Plan Areas (City of San Diego).

- Municipalities entirely within District 3: City of Coronado, City of Del Mar, City of Solana Beach City of Encinitas, City of Carlsbad
- Municipalities partially within District 3: City of San Diego

- Community Plan Areas (City of San Diego) entirely within District 3: Black Mountain Ranch, Carmel Valley, Del Mar Mesa, Fairbanks Ranch Country Club, La Jolla, Los Peñasquitos Canyon, Midway-Pacific Highway, Mira Mesa, Mission Bay Park, Mission Beach, North City Future Urbanizing Area NCFUA Subarea-II, Ocean Beach, Pacific Beach, Pacific Highlands Ranch, Peninsula, Rancho Peñasquitos, Torrey Highlands, Torrey Hills, Torrey Pines, University, Via De La Valle
- Community Plan Areas (City of San Diego) partially within District 3: Downtown, Reserve
- Community Plan Areas (Unincorporated County) entirely within District 3: None
- Community Plan Areas (Unincorporated County) partially within District 3: San Dieguito

The Commission achieved compliance with the criteria described in subdivisions (a) & (b) of Section 21552 as follows:

Cities and Unincorporated Places

Community Type	Name	Divided	Reason for Division
Census Designated Place	Elfin Forest	False	
Census Designated Place	Fairbanks Ranch	False	
Census Designated Place	Harmony Grove	False	
Census Designated Place	Rancho Santa Fe	False	
Municipality	Carlsbad	False	
Municipality	Coronado	False	
Municipality	Del Mar	False	
Municipality	Encinitas	False	
Municipality	Solana Beach	False	
Municipality	San Diego	True	Split based on its total population being greater than the ideal population of a supervisorial district. With a total population of 1,389,851 (2020 Census), the City of San Diego could be split between as few as three supervisorial districts; however, it is split between four supervisorial districts due to the geospatial shape and expansiveness of the incorporated area.

Reasonably Equal Population and Demographics

See Plan Demographics, above.

Compliance with Voting Rights Act

The IRC's Special Voting Rights Act counsel has stated the opinion that the IRC's Final Redistricting Plan does not appear to have the purpose or effect of diluting minority voting strength. Minority eligible voters are not sufficiently numerous to constitute a majority in District 3.

Geographic Contiguity

District 3 is contiguous as specified in California law. *Wilson v. Eu*, 1 Cal. 4th 707,761 (1992); see Cal. Elec. Code § 21500(c)(1); see, e.g., *Final Report of the 2011 Redistricting*, p. 23, State of California Citizens Redistricting Commission, August 15, 2011.

Community of Interest Integrity

Community of Interest Type	Name or Identifying Information	Divided	Reason for Division
Community Builder spatial-submitted COIs	University City/La Jolla	True	Geographic division only.
Community Builder spatial-submitted COIs	Elfin Forest, Harmony Grove, Eden Valley - the united rural communities.	True	Does not perfectly align with administrative boundaries (named area is not split according to boundary data provided by SanGIS and Elfin Forest / Harmony Grove Town Council).
Community Builder spatial-submitted COIs	North Coastal: includes the cities of Carlsbad, Encinitas, Solano Beach, and Del Mar along with the unincorporated communities of Fairbank Ranch and Rancho Santa Fe.	True	Includes multiple COIs.
Community Builder spatial-submitted COIs	AAPI communities	True	Includes multiple COIs; does not perfectly align with administrative boundaries.
Community Builder spatial-submitted COIs	Carlsbad and North County neighbors	True	Includes multiple COIs.
Community Builder spatial-submitted COIs	North County (1 of 2)	True	Exceeds ideal population; includes multiple COIs
Community Builder spatial-submitted COIs	78 Corridor	True	Exceeds ideal population; includes multiple COIs.

Community of Interest Type	Name or Identifying Information	Divided	Reason for Division
Community Builder spatial-submitted COIs	North County (2 of 2)	True	Includes multiple COIs
Community Builder spatial-submitted COIs	North County San Diego Asian Diaspora	True	Includes multiple COIs.
Community Builder spatial-submitted COIs	Inland North County	True	Includes multiple COIs; does not align with administrative boundaries.
Community Plan Areas - Representative Planning and Sponsor Groups (Non-City of San Diego)	San Dieguito	True	Split between supervisorial districts 2 and 3 due to its large area and total population. The Census Designated Places within the San Dieguito Community Plan Area are wholly maintained within either supervisorial district 2 or 3.
Community Plan Areas (City of San Diego)	Black Mountain Ranch	False	
Community Plan Areas (City of San Diego)	Carmel Valley	False	
Community Plan Areas (City of San Diego)	Del Mar Mesa	False	
Community Plan Areas (City of San Diego)	Fairbanks Ranch Country Club	False	
Community Plan Areas (City of San Diego)	La Jolla	False	
Community Plan Areas (City of San Diego)	Los Peñasquitos Canyon	False	
Community Plan Areas (City of San Diego)	Midway-Pacific Highway	False	
Community Plan Areas (City of San Diego)	Mira Mesa	False	
Community Plan Areas (City of San Diego)	Mission Bay Park	False	
Community Plan Areas (City of San Diego)	Mission Beach	False	

Community of Interest Type	Name or Identifying Information	Divided	Reason for Division
Community Plan Areas (City of San Diego)	NCFUA Subarea-II	False	
Community Plan Areas (City of San Diego)	Ocean Beach	False	
Community Plan Areas (City of San Diego)	Pacific Beach	False	
Community Plan Areas (City of San Diego)	Pacific Highlands Ranch	False	
Community Plan Areas (City of San Diego)	Peninsula	False	
Community Plan Areas (City of San Diego)	Rancho Peñasquitos	False	
Community Plan Areas (City of San Diego)	Reserve	True	Geographic split only; inevitably split due to the geospatial multi-part nature of the Community Plan Area. The majority of the Reserve Community Plan Area is located west of downtown San Diego, with a portion located east of Scripps Miramar Ranch Community Plan Area.
Community Plan Areas (City of San Diego)	Torrey Highlands	False	
Community Plan Areas (City of San Diego)	Torrey Hills	False	
Community Plan Areas (City of San Diego)	Torrey Pines	False	
Community Plan Areas (City of San Diego)	University	False	
Community Plan Areas (City of San Diego)	Via De La Valle	False	
Community Plan Areas (City of San Diego)	Downtown	True	Split to allow for contiguity of supervisorial district 3, based on ferry between City of Coronado and City of San Diego. Substantial public COI

Community of Interest Type	Name or Identifying Information	Divided	Reason for Division
			testimony supported inclusion of City of Coronado in District 3.
Elementary School Districts	Gen Elem Cardiff	False	
Elementary School Districts	Gen Elem Del Mar Union	False	
Elementary School Districts	Gen Elem Solana Beach	False	
Elementary School Districts	Gen Elem Encinitas Union	True	Geospatial inevitability; overlapping geography with City of San Marcos.
Elementary School Districts	Gen Elem Rancho Santa Fe	True	Geospatial inevitability; overlapping geography with City of San Marcos.
Elementary School Districts	Gen Elem Escondido Union	True	Overlapping geography with Harmony Grove.
Elementary School Districts	Gen Elem South Bay Union	True	Overlapping geography with City of Coronado.
Fire Districts	Rancho Santa Fe Fire Protection Dist. Of Sd County	True	Split due to its large area and total population, as well as inevitable split due to overlapping geography with City of Escondido.
Fire Districts	San Marcos Fire Protection District	True	Overlapping geography with Harmony Grove.
High School Districts	High San Dieguito Union	True	Geospatial inevitability; overlapping geography with City of San Marcos.
High School Districts	High Escondido Union	True	Overlapping geography with Harmony Grove and southeast of Escondido.
Military Installations	Field Industrial Supply Center	False	
Military Installations	Fleet Anti-submarine Warfare	False	
Military Installations	Fleet Anti-Submarine Warfare	False	
Military Installations	Marine Corps Recruit Depot Sd	False	
Military Installations	Naval Amphibious Base Coronado	False	
Military Installations	Naval Base Coronado	False	
Military Installations	Naval Radio Station I.B.	False	
Military Installations	Naval Submarine Base San Diego	False	
Military Installations	The Village At NTC	False	

Community of Interest Type	Name or Identifying Information	Divided	Reason for Division
Sanitation Districts	Solana Beach Sanitation L&I	False	
Unified School Districts	Unified Coronado	False	
Unified School Districts	Unified Carlsbad	True	Geospatial inevitability; overlapping geography with City of Oceanside.
Unified School Districts	Unified Poway	True	Overlapping geography with Black Mountain Ranch, Rancho Peñasquitos, and Torrey Highlands Community Plans Areas.
Unified School Districts	Unified San Diego	True	Split due to its large geographic area, population density, and overlap with COIs that are in within differing supervisorial districts.
Unified School Districts	Unified San Marcos	True	Geospatial inevitability; overlapping geography with City of Carlsbad.
Water Districts	Carlsbad Municipal Water District	False	
Water Districts	Leucadia Wastewater District	False	
Water Districts	Questhaven Municipal Water District	False	
Water Districts	San Dieguito Water District Land	False	
Water Districts	San Dieguito Water District-railroad Land	False	
Water Districts	Santa Fe Irrigation - Annex No 2 Land	False	
Water Districts	Santa Fe Irrigation Land	False	
Water Districts	Olivenhain Municipal Water District	True	Split due to the division of the San Dieguito Community Plan Area.
Water Districts	Olivenhain Muni Water Imp Dist A	True	Split due to the division of the San Dieguito Community Plan Area.
Water Districts	Vallecitos Water District	True	Overlapping geography with City of Carlsbad, which is in supervisorial district 3.

Community of Interest Type	Name or Identifying Information	Divided	Reason for Division
Water Districts	Vallecitos Water Imp Dist No 6 - Sewer Service	True	Overlapping geography with City of Carlsbad, which is in supervisorial district 3.
Water Districts	Rincon Del Diablo Municipal Water District	True	Overlapping geography with Harmony Grove CDP, which is in supervisorial district 3, and unincorporated areas southwest of City of Escondido, which are in supervisorial district 2.

Geographical Compactness

Where it does not conflict with other mandatory criteria, District 3 is compact such that nearby areas of population are not bypassed for more distant areas of population.

Place of Residence of Incumbents

The Commission did not take into consideration the place of residence of any incumbent, or political candidate when drawing District 3.

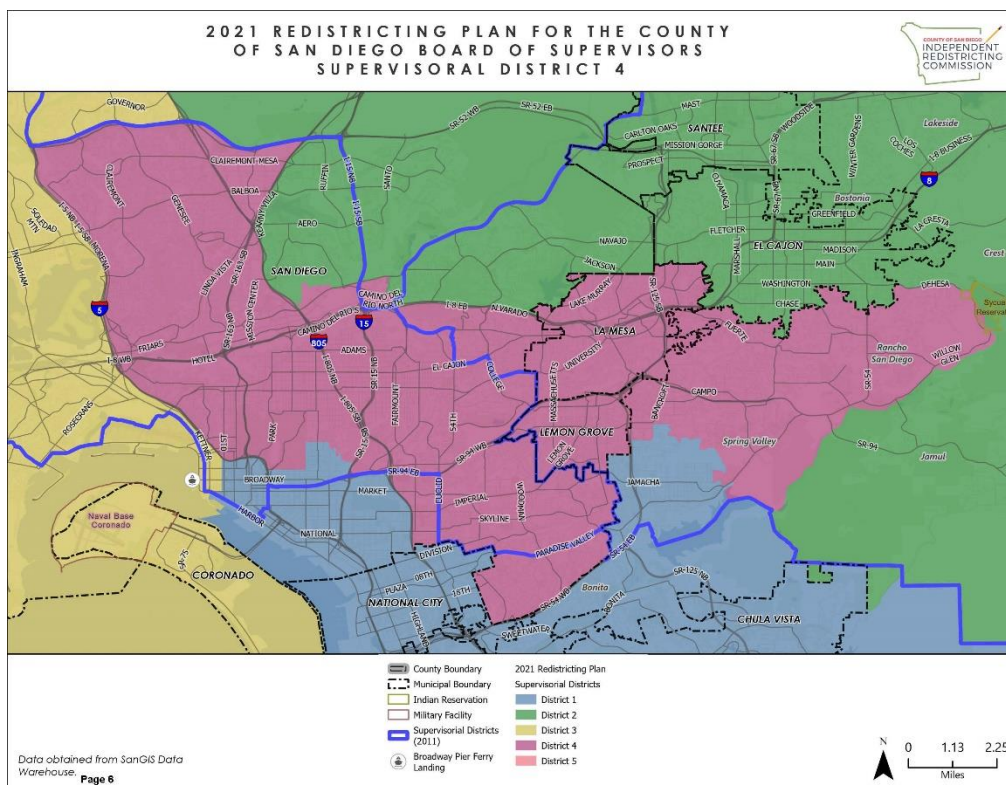
Purposeful Discrimination for or Against an Incumbent, Political Candidate, or Political Party

The Commission did not draw District 3 for the purpose of favoring or discriminating against an incumbent, political candidate, or political party.

Unincorporated Area

Unincorporated	Total Area (sq mi)	Unincorporated Area (sq mi)	Percent Unincorporated Area	Incorporated Area (sq mi)	Percent Incorporated Area
District 3	231	38	16.3%	194	83.7%

District 4



Approved Map of District 4 as adopted on December 11, 2021

Beginning in the northwest corner of the Clairemont Mesa Community Plan Area (City of San Diego), the District 4 border travels south along the western boundaries of the Linda Vista, Mission Valley, Old Town San Diego, and Uptown Community Plan Areas (City of San Diego). The border then travels east-southeast along the borders of the Balboa Park, North Park, Mid-city Heights, Encanto, and Skyline-Paradise Hills Community Planning Areas. The boundary then travels east-northeast along the outer boundary of the Spring Valley Community Plan Area (Unincorporated County) and the La Presa Census Designated Place to include the City of Lemon Grove and the Rancho San Diego Census Designated Place. The border turns north and west following the boundary of the Casa de Oro-Mount Helix Community Plan Area (Unincorporated County) and the City of La Mesa. The boundary continues west into the City of San Diego and follows the northern limits of the College Area Community Plan Area (City of San Diego) towards the Serra Mesa Community Plan Area (City of San Diego). The Boundary turns northwest at the Inland Freeway and the northeast at the Cabrillo Freeway to the northern border of the Kearny Mesa Community Plan Area (City of San Diego), where it moves west to include the Clairemont Community Plan Area (City of San Diego).

- Municipalities entirely within District 4: City of Lemon Grove, City of La Mesa

- Municipalities partially within District 4: City of San Diego
- Community Plan Areas (City of San Diego) entirely within District 4: Balboa Park, Clairemont Mesa, College Area, Encanto Neighborhoods, Linda Vista, Mid-city: City Heights, Mid-city: Eastern Area, Mid-city: Kensington-Talmadge, Mid-city: Normal Heights, Mission Valley, North Park, Old Town San Diego, Skyline-Paradise Hills, Uptown
- Community Plan Areas (City of San Diego) partially within District 4: Serra Mesa, Kearny Mesa
- Community Plan Areas (Unincorporated County) entirely within District 4: None
- Community Plan Areas (Unincorporated County) partially within District 4: Crest – Dehesa, Spring Valley, Valle De Oro

The Commission achieved compliance with the criteria described in subdivisions (a) & (b) of Section 21552 as follows:

Cities and Unincorporated Places

Community Type	Name	Divided	Reason for Division
Census Designated Places	Casa De Oro-Mount Helix	False	
Census Designated Places	Rancho San Diego	False	
Census Designated Places	Spring Valley	False	
Municipalities	La Mesa	False	
Municipalities	Lemon Grove	False	
Municipalities	San Diego	True	Split based on its total population being greater than the ideal population of a supervisorial district. With a total population of 1,389,851 (2020 Census), the City of San Diego could be split between as few as three supervisorial districts; however, it is split between four supervisorial districts due to the geospatial shape and expansiveness of the incorporated area.

Reasonably Equal Population and Demographics

See Plan Demographics, above.

Compliance with Voting Rights Act

The IRC's Special Voting Rights Act counsel has stated the opinion that the IRC's Final Redistricting Plan does not appear to have the purpose or effect of diluting minority

voting strength. A coalition of minority eligible voters constitute a majority in District 4, which appears to provide an opportunity for Latinos to elect candidates of choice. See Special Voting Rights Act counsel Bruce Adelson's legal opinion in Appendix 14 & Report Assessing the Opportunity for Latino and Minority Voters to Elect Candidates of Choice in the 2021 Redistricting Plan for the County of San Diego Board of Supervisors by Dr. Christian Grose and Dr. Natalie Masuoka in Appendix 13.

Geographic Contiguity

District 4 is contiguous as specified in California law.

Community of Interest Integrity

Community of Interest Type	Name or Identifying Information	Divided	Reason for Division
Community Builder spatial-submitted COIs	BIPOC Immigrant & Refugee Communities	True	Geographic division only.
Community Builder spatial-submitted COIs	City Heights	False	
Community Builder spatial-submitted COIs	I live in the Oak Park neighborhood bordering City Heights to the West, Rolando/Talmadge to the North, Eastern border is College Ave, southern border is I-94.	False	
Community Builder spatial-submitted COIs	University Heights	False	
Community Builder spatial-submitted COIs	I live in North Encanto but a lot of our resources as in La Mesa, Lemon Grove, or in the city.	True	Includes multiple COIs.
Community Builder spatial-submitted COIs	Grossmont-Mt. Helix	True	Does not perfectly align with administrative boundaries (named area is not split according to boundary data provided by SanGIS).
Community Builder spatial-submitted COIs	BIPOC, Immigrant & Refugee	True	Includes multiple COIs; does not perfectly align with administrative boundaries.
Community Builder spatial-submitted COIs	Lakeside and unincorporated areas within the existing District 2	True	Includes multiple COIs; does not align with administrative boundaries.

Community of Interest Type	Name or Identifying Information	Divided	Reason for Division
Community Builder spatial-submitted COIs	AAPI communities	True	Includes multiple COIs; does not perfectly align with administrative boundaries.
Community Builder spatial-submitted COIs	BIPOC Immigrant and Refugee	True	Includes multiple COIs.
Community Builder spatial-submitted COIs	South Bay	True	Does not perfectly align with administrative boundaries.
Community Plan Areas - Representative Planning and Sponsor Groups (Non-City of San Diego)	Valle De Oro	True	Inevitably split based on the geospatial nature of boundary between Valle de Oro Community Plan Area and Jamul CDP.
Community Plan Areas - Representative Planning and Sponsor Groups (Non-City of San Diego)	Spring Valley	True	Split due to the Community Plan Area being comprised of the La Presa and Spring Valley CDPs, which within District 1 and District 4, respectively, based on COI testimony.
Community Plan Areas - Representative Planning and Sponsor Groups (Non-City of San Diego)	Crest - Dehesa	True	Inevitably split based on the geospatial overlap of the Crest - Dehesa Community Plan Area and Rancho San Diego CDP.
Community Plan Areas (City of San Diego)	Balboa Park	False	
Community Plan Areas (City of San Diego)	Clairemont Mesa	False	
Community Plan Areas (City of San Diego)	College Area	False	
Community Plan Areas (City of San Diego)	Encanto Neighborhoods	False	
Community Plan Areas (City of San Diego)	Linda Vista	False	
Community Plan Areas (City of San Diego)	Mid-city: City Heights	False	
Community Plan Areas (City of San Diego)	Mid-city: Eastern Area	False	
Community Plan Areas (City of San Diego)	Mid-city: Kensington-Talmadge	False	
Community Plan Areas (City of San Diego)	Mid-city: Normal Heights	False	
Community Plan Areas (City of San Diego)	Mission Valley	False	
Community Plan Areas (City of San Diego)	North Park	False	
Community Plan Areas (City of San Diego)	Old Town San Diego	False	

Community of Interest Type	Name or Identifying Information	Divided	Reason for Division
Community Plan Areas (City of San Diego)	Skyline-paradise Hills	False	
Community Plan Areas (City of San Diego)	Uptown	False	
Community Plan Areas (City of San Diego)	Serra Mesa	True	Split based on IRC 12/3/2021 motion instructing Birdland area—bounded by SR-163 to the east, I-805 to the west, and north of the Mission Valley Community Plan Area—to be included within supervisorial district 4.
Community Plan Areas (City of San Diego)	Kearny Mesa	True	Split based on IRC 12/3/2021 motion instructing Convoy area—bounded by SR-52 on the north, I-805 on the east and SR-163 on the west—to be included within supervisorial district 4.
Elementary School Districts	Gen Elem Lemon Grove	False	
Elementary School Districts	Gen Elem La Mesa-Spring Valley	True	Overlapping geography with La Presa, Spring Valley, and Casa de Oro-Mount Helix CDPs.
Elementary School Districts	Gen Elem Dehesa	True	Inevitably split based on the geospatial overlap of Gen Elem Dehesa and Rancho San Diego CDP.
Elementary School Districts	Gen Elem Cajon Valley Union	True	Overlapping geography with unincorporated East County (e.g., Rancho San Diego, Granite Hills CDPs).
Elementary School Districts	Gen Elem National	True	Geospatial inevitability; overlapping geography with Encanto Community Plan Area.
Fire Districts	San Miguel Consol. Fire Protection District	True	Geospatial inevitability based on overlapping geography with Cities of Lemon Grove, La Mesa, and El Cajon.
High School Districts	High Grossmont Union	True	Overlapping geography with City of Santee and unincorporated East County

Community of Interest Type	Name or Identifying Information	Divided	Reason for Division
			(e.g., Rancho San Diego, Alpine, and Jamul CDPs).
Military Installations	Cholla Heights Family Housing	False	
Military Installations	Naval Medical Center San Diego	False	
Sanitation Districts	Lemon Grove Sanitation District L&I	False	
Sanitation Districts	San Diego County Sanitation District L&I	True	Geospatial inevitability; split due to geospatial multi-part nature of the Sanitation District (i.e., the single geospatial polygon includes multiple dis-contiguous areas throughout San Diego County).
Unified School Districts	Unified San Diego	True	Split due to its large geographic area, population density, and overlap with COIs that are in within differing supervisorial districts.
Water Districts	Otay Water Imp Dist A	False	
Water Districts	Helix Water District Land	True	Overlapping geography with unincorporated East County (e.g., Rancho San Diego, Spring Valley, Granite Hills CDPs), which is in supervisorial district 2.
Water Districts	Otay Water District	True	Overlapping geography with unincorporated East County (e.g., Rancho San Diego, Spring Valley, and Jamul CDPs), which is in supervisorial district 2.

Geographical Compactness

Where it does not conflict with other mandatory criteria, District 4 is compact such that nearby areas of population are not bypassed for more distant areas of population.

Place of Residence of Incumbents

The Commission did not take into consideration the place of residence of any incumbent, or political candidate when drawing District 4.

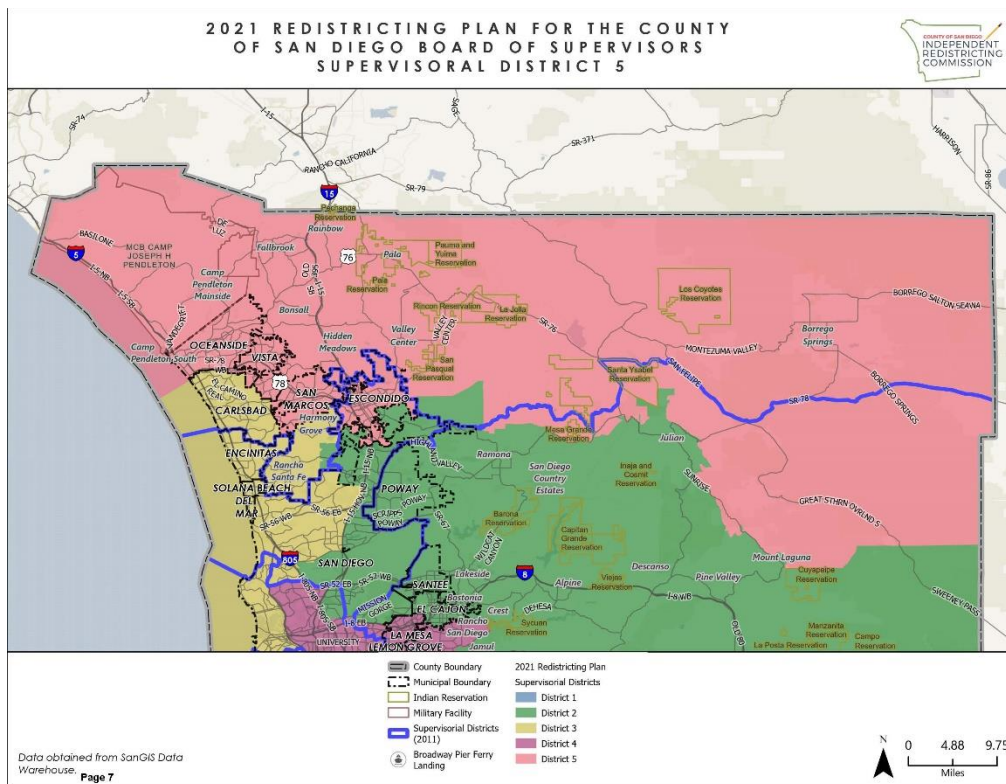
Purposeful Discrimination for or Against an Incumbent, Political Candidate, or Political Party

The Commission did not draw District 4 for the purpose of favoring or discriminating against an incumbent, political candidate, or political party.

Unincorporated Area

Unincorporated	Total Area (sq mi)	Unincorporated Area (sq mi)	Percent Unincorporated Area	Incorporated Area (sq mi)	Percent Incorporated Area
District 4	101	23	22.7%	78	77.3%

District 5



Approved Map of District 5 as adopted on December 11, 2021

From the northwest border of the county the District 5 border traverses eastward along the county's northern border to its eastern border. It then travels south and then west-southwest to include the majority of the Desert and North Mountain Community Plan Areas (Unincorporated County), the Santa Ysabel and Mesa Grande Reservations, and the Pala-Pauma Community Plan Area (Unincorporated County). It continues west through the North County Metro Community Plan Area (Unincorporated County) and

follows the southern boundaries of the Cities of Escondido, San Marcos, Vista, and Oceanside, where it travels northwest to the County border.

- Municipalities entirely within District 5: City of Escondido, City San Marcos, City of Vista, City of Oceanside
- Municipalities partially within District 5: None
- Community Plan Areas (City of San Diego) entirely within District 5: None
- Community Plan Areas (City of San Diego) partially within District 5: None
- Community Plan Areas (Unincorporated County) entirely within District 5: Bonsall, Borrego Springs, Fallbrook, Hidden Meadows, North Mountain, Pala – Pauma, Palomar Mountain, Pendleton - De Luz, Rainbow, Twin Oaks, Valley Center
- Community Plan Areas (Unincorporated County) partially within District 5: Desert, North County Metro, Ramona, San Dieguito

The Commission achieved compliance with the criteria described in subdivisions (a) & (b) of Section 21552 as follows:

Cities and Unincorporated Places

Community Type	Name	Divided	Reason for Division
Census Designated Places	Bonsall	False	
Census Designated Places	Borrego Springs	False	
Census Designated Places	Camp Pendleton Mainside	False	
Census Designated Places	Camp Pendleton South	False	
Census Designated Places	Fallbrook	False	
Census Designated Places	Hidden Meadows	False	
Census Designated Places	Lake San Marcos	False	
Census Designated Places	Pala	False	
Census Designated Places	Rainbow	False	
Census Designated Places	Valley Center	False	
Municipalities	Escondido	False	
Municipalities	Oceanside	False	
Municipalities	San Marcos	False	
Municipalities	Vista	False	

Reasonably Equal Population and Demographics

See Plan Demographics, above.

Compliance with Voting Rights Act

The IRC's Special Voting Rights Act counsel has stated the opinion that the IRC's Final Redistricting Plan does not appear to have the purpose or effect of diluting minority voting strength. Minority eligible voters are not sufficiently numerous to constitute a majority in the District 5.

Geographic Contiguity

District 5 is contiguous as specified in California law.

Community of Interest Integrity

Community of Interest Type	Name or identifying Information	Divided	Reason for Division
Community Builder spatial-submitted COIs	Fallbrook	False	
Community Builder spatial-submitted COIs	Rainbow	False	
Community Builder spatial-submitted COIs	Twin Oaks Valley	False	
Community Builder spatial-submitted COIs	Valley Center	False	
Community Builder spatial-submitted COIs	North County (2 of 2)	True	Includes multiple COIs
Community Builder spatial-submitted COIs	North County San Diego Asian Diaspora	True	Includes multiple COIs.
Community Builder spatial-submitted COIs	Inland North County	True	Includes multiple COIs; does not align with administrative boundaries.
Community Builder spatial-submitted COIs	78 Corridor	True	Exceeds ideal population; includes multiple COIs.
Community Builder spatial-submitted COIs	North County (1 of 2)	True	Exceeds ideal population; includes multiple COIs
Community Builder spatial-submitted COIs	Carlsbad and North County neighbors	True	Includes multiple COIs.
Community Builder spatial-submitted COIs	Magic Back Country	True	Includes multiple COIs; does not align with administrative boundaries.
Community Builder spatial-submitted COIs	North Coastal: includes the cities of Carlsbad, Encinitas, Solano Beach, and Del Mar along with the unincorporated communities of Fairbank Ranch and Rancho Santa Fe.	True	Includes multiple COIs.
Community Builder spatial-submitted COIs	Ramona (2 of 2)	True	Does not perfectly align with administrative boundaries.

Community of Interest Type	Name or identifying Information	Divided	Reason for Division
Community Builder spatial-submitted COIs	Elfin Forest, Harmony Grove, Eden Valley - the united rural communities.	True	Does not perfectly align with administrative boundaries (named area is not split according to boundary data provided by SanGIS and Elfin Forest / Harmony Grove Town Council).
Community Builder spatial-submitted COIs	Lakeside and unincorporated areas within the existing District 2	True	Includes multiple COIs; does not align with administrative boundaries.
Community Builder spatial-submitted COIs	Ramona (1 of 2)	True	Does not perfectly align with administrative boundaries.
Community Plan Areas - Representative Planning and Sponsor Groups (Non-City of San Diego)	Bonsall	False	
Community Plan Areas - Representative Planning and Sponsor Groups (Non-City of San Diego)	Borrego Springs	False	
Community Plan Areas - Representative Planning and Sponsor Groups (Non-City of San Diego)	Fallbrook	False	
Community Plan Areas - Representative Planning and Sponsor Groups (Non-City of San Diego)	Hidden Meadows	False	
Community Plan Areas - Representative Planning and Sponsor Groups (Non-City of San Diego)	North Mountain	False	
Community Plan Areas - Representative Planning and Sponsor Groups (Non-City of San Diego)	Pala - Pauma	False	
Community Plan Areas - Representative Planning and Sponsor Groups (Non-City of San Diego)	Palomar Mountain	False	
Community Plan Areas - Representative Planning	Pendleton - De Luz	False	

Community of Interest Type	Name or identifying Information	Divided	Reason for Division
and Sponsor Groups (Non-City of San Diego)			
Community Plan Areas - Representative Planning and Sponsor Groups (Non-City of San Diego)	Rainbow	False	
Community Plan Areas - Representative Planning and Sponsor Groups (Non-City of San Diego)	Twin Oaks	False	
Community Plan Areas - Representative Planning and Sponsor Groups (Non-City of San Diego)	Valley Center	False	
Community Plan Areas - Representative Planning and Sponsor Groups (Non-City of San Diego)	Desert	True	Inevitably split based on the geospatial overlap of the Desert and Mountain Empire Community Plan Areas.
Community Plan Areas - Representative Planning and Sponsor Groups (Non-City of San Diego)	North County Metro	True	Inevitably split due to geospatial multi-part nature of the Community Plan Area (i.e., the single geospatial polygon includes multiple discontinuous areas throughout San Diego County).
Community Plan Areas - Representative Planning and Sponsor Groups (Non-City of San Diego)	Ramona	True	Split in order to keep Mesa Grande Indian Reservation, which is in the northeast corner of the Ramona Community Plan Area, wholly within supervisorial district 5 with other North County Indian Reservations.
Community Plan Areas - Representative Planning and Sponsor Groups (Non-City of San Diego)	San Dieguito	True	Split between supervisorial districts 2 and 3 due to its large area and total population. The Census Designated Places within the San

Community of Interest Type	Name or identifying Information	Divided	Reason for Division
			Dieguito Community Plan Area are wholly maintained within either supervisorial district 2 or 3.
Elementary School Districts	Gen Elem Fallbrook Union	False	
Elementary School Districts	Gen Elem Vallecitos	False	
Elementary School Districts	Gen Elem Escondido Union	True	Overlapping geography with Harmony Grove.
Elementary School Districts	Gen Elem San Pasqual Union	True	Geospatial inevitability; overlapping geography with City of Escondido.
Elementary School Districts	Gen Elem Julian Union	True	Overlapping geography with North County Indian Reservations.
Elementary School Districts	Gen Elem Spencer Valley	True	Overlapping geography with North Mountain Community Plan Area.
Elementary School Districts	Gen Elem Rancho Santa Fe	True	Geospatial inevitability; overlapping geography with City of San Marcos.
Fire Districts	Borrego Springs Fire Protection District	False	
Fire Districts	Deer Springs Fire Protection District	False	
Fire Districts	North County Fire Protection District Of Sd County	False	
Fire Districts	North County FPD - Rainbow Subzone	False	
Fire Districts	Valley Center Fire Protection District	False	
Fire Districts	Vista Fire Protection District	False	
Fire Districts	San Marcos Fire Protection District	True	Overlapping geography with Harmony Grove.
Fire Districts	Rancho Santa Fe Fire Protection Dist. Of Sd County	True	Split due to its large area and total population, as well as inevitable split due to

Community of Interest Type	Name or identifying Information	Divided	Reason for Division
			overlapping geography with City of Escondido.
High School Districts	High Fallbrook Union	False	
High School Districts	High Escondido Union	True	Overlapping geography with Harmony Grove and southeast of Escondido.
High School Districts	High Julian Union	True	Overlapping geography with North County Indian Reservations.
Indian Reservations	La Jolla Reservation	False	
Indian Reservations	Los Coyotes Reservation	False	
Indian Reservations	Mesa Grande Reservation	False	
Indian Reservations	Pala Reservation	False	
Indian Reservations	Pauma And Yuima Reservation	False	
Indian Reservations	Rincon Reservation	False	
Indian Reservations	San Pasqual Reservation	False	
Indian Reservations	Santa Ysabel Reservation	False	
Military Installations	Fallbrook Naval Weapons Station	False	
Military Installations	MCB Camp Joseph H Pendleton	False	
Public Utility Districts	Fallbrook Public Utility District	False	
Public Utility Districts	Fallbrook PUD - Sanitary District S	False	
Sanitation Districts	Buena Sanitation Maint Dist. L&I	False	
Unified School Districts	Unified Bonsall	False	
Unified School Districts	Unified Borrego Springs	False	
Unified School Districts	Unified Oceanside	True	Geographic split; geospatial inevitability based on overlapping geography with City of Carlsbad.
Unified School Districts	Unified Vista	True	Geographic split only; geospatial inevitability; overlapping geography with City of Carlsbad.
Unified School Districts	Unified Warner	False	
Unified School Districts	Unified Valley Center-Pauma	True	Split to reduce total population of supervisorial district 5

Community of Interest Type	Name or identifying Information	Divided	Reason for Division
			and bolster total population of supervisorial district 2 while maintaining other COIs.
Unified School Districts	Unified San Marcos	True	Geospatial inevitability; overlapping geography with City of Carlsbad.
Unified School Districts	Unified Carlsbad	True	Geospatial inevitability; overlapping geography with City of Oceanside.
Unified School Districts	Unified Ramona	True	Overlapping geography with Mesa Grande Indian Reservation.
Unified School Districts	Unified Mt Empire	True	Geospatial inevitability; overlapping geography with Desert Community Plan Area.
Water Districts	Borrego (Calif) Water - Improvement Dist No. 3	False	
Water Districts	Borrego (Calif) Water - Improvement Dist No. 4	False	
Water Districts	Borrego (Calif) Water Dist. Land	False	
Water Districts	Canebrake County Water District	False	
Water Districts	Carlsbad Municipal Water District '75 Detachment	False	
Water Districts	Mootamai Municipal Water District	False	
Water Districts	Pauma Municipal Water District	False	
Water Districts	Rainbow Muni Water Imp Dist A	False	
Water Districts	Rainbow Muni Water Imp Dist B	False	
Water Districts	Rainbow Muni Water Imp Dist C	False	
Water Districts	Rainbow Municipal Water District	False	
Water Districts	San Luis Rey Municipal Water District	False	
Water Districts	Vallecitos Water Imp Dist No 5 - Sewer Service	False	
Water Districts	Vallecitos Water-sewer Service	False	

Community of Interest Type	Name or identifying Information	Divided	Reason for Division
Water Districts	Valley Center Municipal Water District	False	
Water Districts	Vista Irrigation Land	False	
Water Districts	Yuima Muni Water-imp Dist A For Water Service	False	
Water Districts	Yuima Municipal Water District	False	
Water Districts	Vallecitos Water Imp Dist No 6 - Sewer Service	True	Overlapping geography with City of Carlsbad, which is in supervisorial district 3.
Water Districts	Vallecitos Water District	True	Overlapping geography with City of Carlsbad, which is in supervisorial district 3.
Water Districts	Rincon Del Diablo Municipal Water District	True	Overlapping geography with Harmony Grove CDP, which is in supervisorial district 3, and unincorporated areas southwest of City of Escondido, which are in supervisorial district 2.
Water Districts	Rincon Del Diablo Muni Water Imp Dist A	True	Geospatial inevitability – overlapping geography with City of Escondido, which is in supervisorial district 5.
Water Districts	Rincon Del Diablo Muni Id.E (Formerly F&G)	True	Geospatial inevitability – overlapping geography with City of Escondido, which is in supervisorial district 5.
Water Districts	Olivenhain Municipal Water District	True	Split due to the division of the San Dieguito Community Plan Area.

Geographical Compactness

Where it does not conflict with other mandatory criteria, District 5 is compact such that nearby areas of population are not bypassed for more distant areas of population.

Place of Residence of Incumbents

The Commission did not take into consideration the place of residence of any incumbent, or political candidate when drawing District 5.

Purposeful Discrimination for or Against an Incumbent, Political Candidate, or Political Party

The Commission did not draw District 5 for the purpose of favoring or discriminating against an incumbent, political candidate, or political party.

Unincorporated Area

Unincorporated	Total Area (sq mi)	Unincorporated Area (sq mi)	Percent Unincorporated Area	Incorporated Area (sq mi)	Percent Incorporated Area
District 5	2,186	2,062	94.3%	124	5.7%

Conclusion

On December 11, 2021, the IRC passed a motion to adopt the revised “Final Working Draft Map Scenario 3b” as the 2021 Redistricting Plan for the County of San Diego Board of Supervisors on a vote of 10 ayes, 1 abstention, 1 nay, and 2 absent.

Effective Date of Final Plan

As legally required, on December 14, 2021, the IRC adopted by resolution a redistricting plan adjusting the boundaries of the supervisorial district and filed the plan with the Clerk of the Board of Supervisors by the statutorily required deadline of December 15, 2021. While the resolution of the IRC is effective immediately, the plan shall be subject to referendum in the same manner as ordinances.

Closing Remarks

The 14 citizen-members of the first-ever County of San Diego Independent Redistricting Commission have been honored to serve the residents of the County of San Diego and thank them for their participation in the redistricting process. The IRC undertook the task of redrawing the boundaries for the County’s five supervisorial districts in a transparent and impartial manner that complied with law. The IRC was constantly focused on the goal of reinforcing public confidence in the integrity of the redistricting process. The IRC succeeded in promoting broad and diverse public participation under the extreme circumstances presented by a global pandemic. We assure all who participated their voices were heard in the symphony of diverse interests that plays throughout our County. The IRC is grateful for the opportunity to have served you in this important duty and for your support.

Appendices

Table of contents

1. Legal Statutes and Considerations
2. Map of prior San Diego County Supervisorial Districts as adopted by the Board of Supervisors on September 27, 2011
3. Board Letters pertaining to creation of the IRC
4. Commissioner Biographies
5. Training Continuum
6. Education Tour Schedule
7. Pre-Mapping Public Hearings
8. ABASD Final Report – Pre-Mapping
9. Draft Map Public Hearings
10. ABASD Final Report – Draft Mapping
11. Publicly Submitted Maps
12. Diagram of Map Evolution and Map Directives
13. Racially Polarized Voting Analysis of San Diego County
14. Special VRA Counsel Materials
15. Map of final adopted plan (all County and each district)
16. IRC resolution for adoption of Final Map
17. IRC resolution for adoption of Final Report
18. IRC Budget